

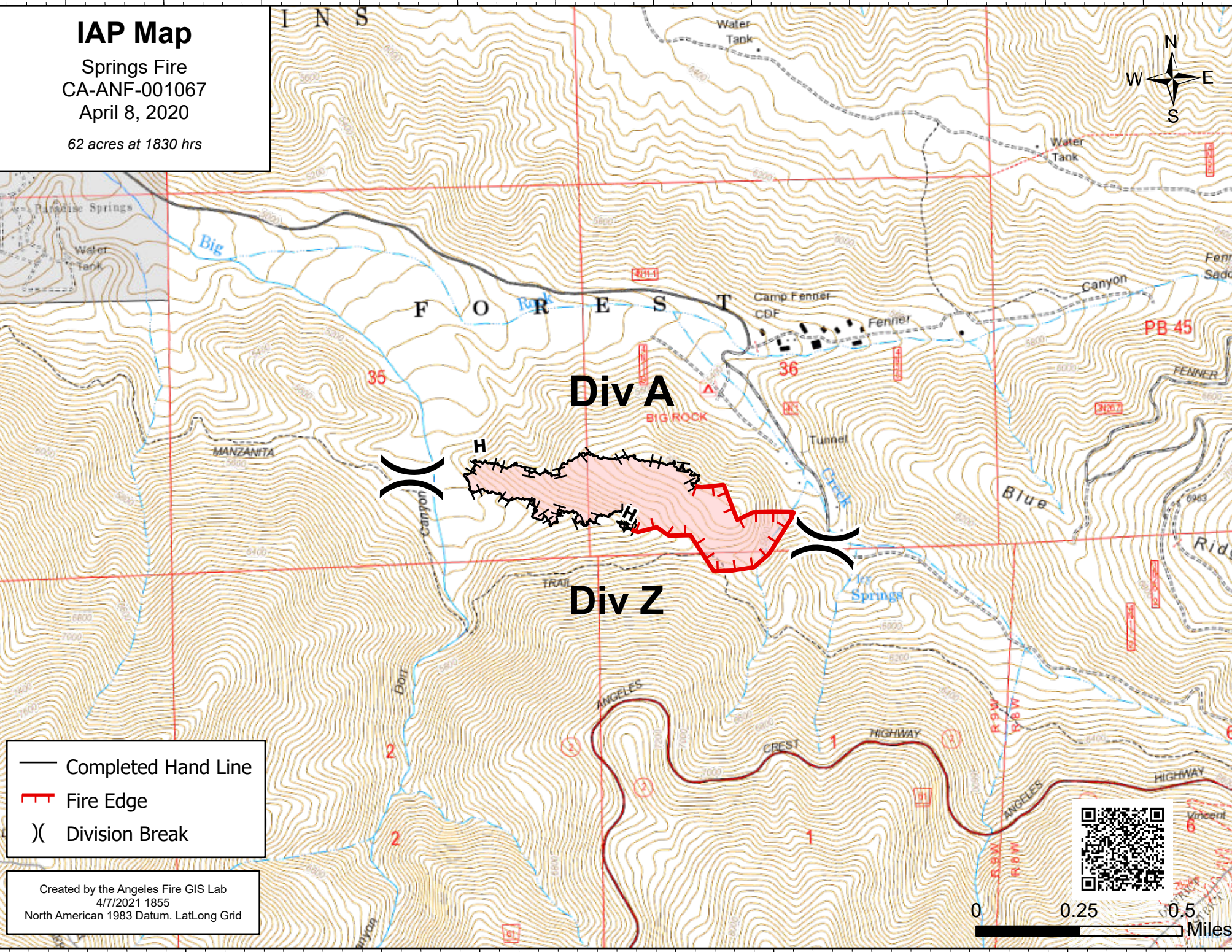
117°48'W 117°47.5'W 117°47'W 117°46.5'W 117°46'W 117°45.5'W

# IAP Map

Springs Fire  
CA-ANF-001067  
April 8, 2020  
62 acres at 1830 hrs

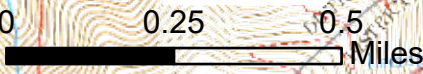


34°23.99'N  
34°23.5'N  
34°23'N  
34°22.5'N



- Completed Hand Line
- ▬ Fire Edge
- ) Division Break

Created by the Angeles Fire GIS Lab  
4/7/2021 1855  
North American 1983 Datum. LatLong Grid



117°48'W 117°47.5'W 117°47'W 117°46.5'W 117°46'W 117°45.5'W