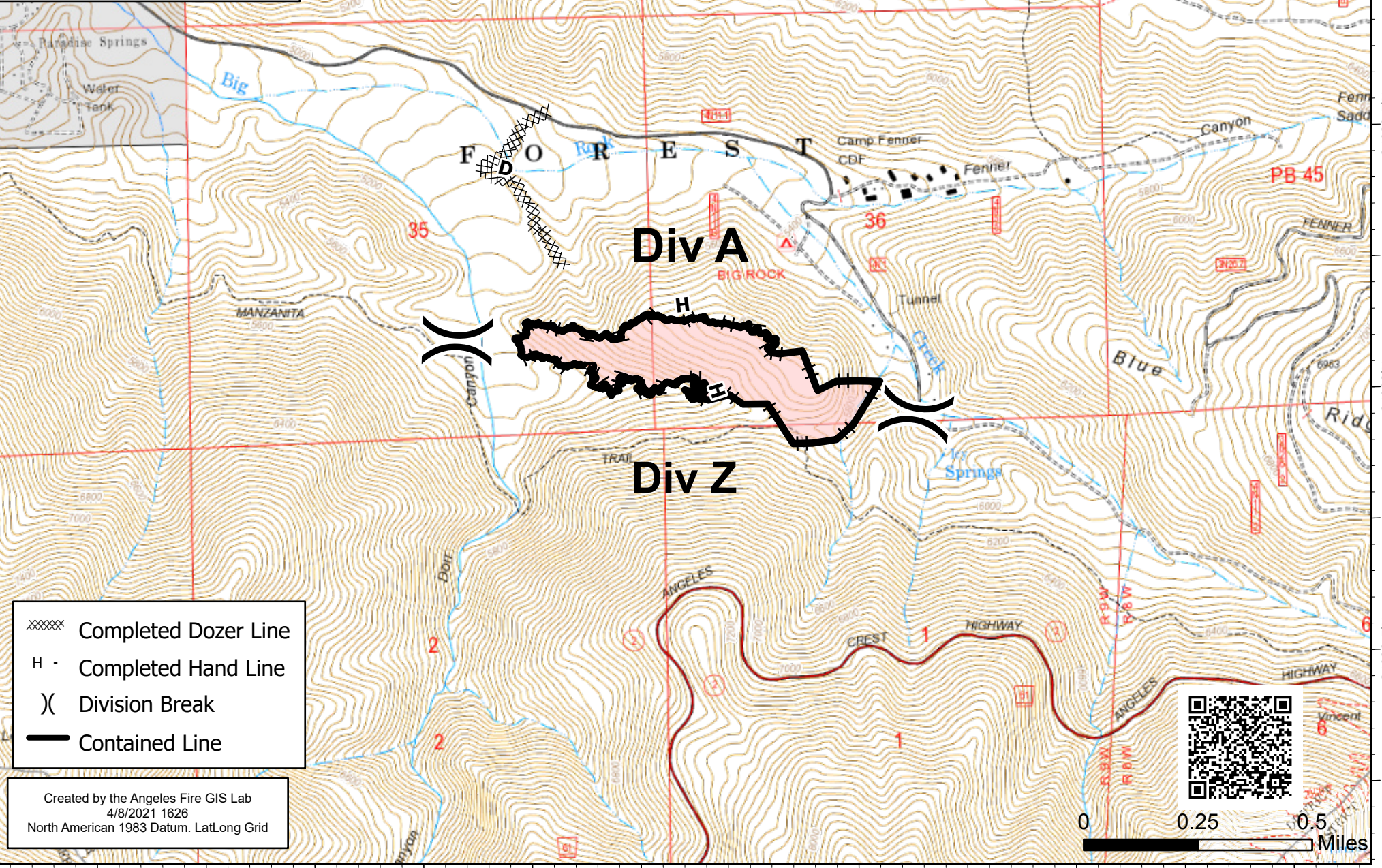


117°48'W 117°47.5'W 117°47'W 117°46.5'W 117°46'W 117°45.5'W

34°23.99'N 34°23.5'N 34°23'N 34°22.5'N

**IAP Map**  
Springs Fire  
CA-ANF-001067  
April 9, 2020  
62 acres at 1830 hrs



XXXXX Completed Dozer Line  
H Completed Hand Line  
) Division Break  
— Contained Line

Created by the Angeles Fire GIS Lab  
4/8/2021 1626  
North American 1983 Datum. LatLong Grid

0 0.25 0.5 Miles

117°48'W 117°47.5'W 117°47'W 117°46.5'W 117°46'W 117°45.5'W