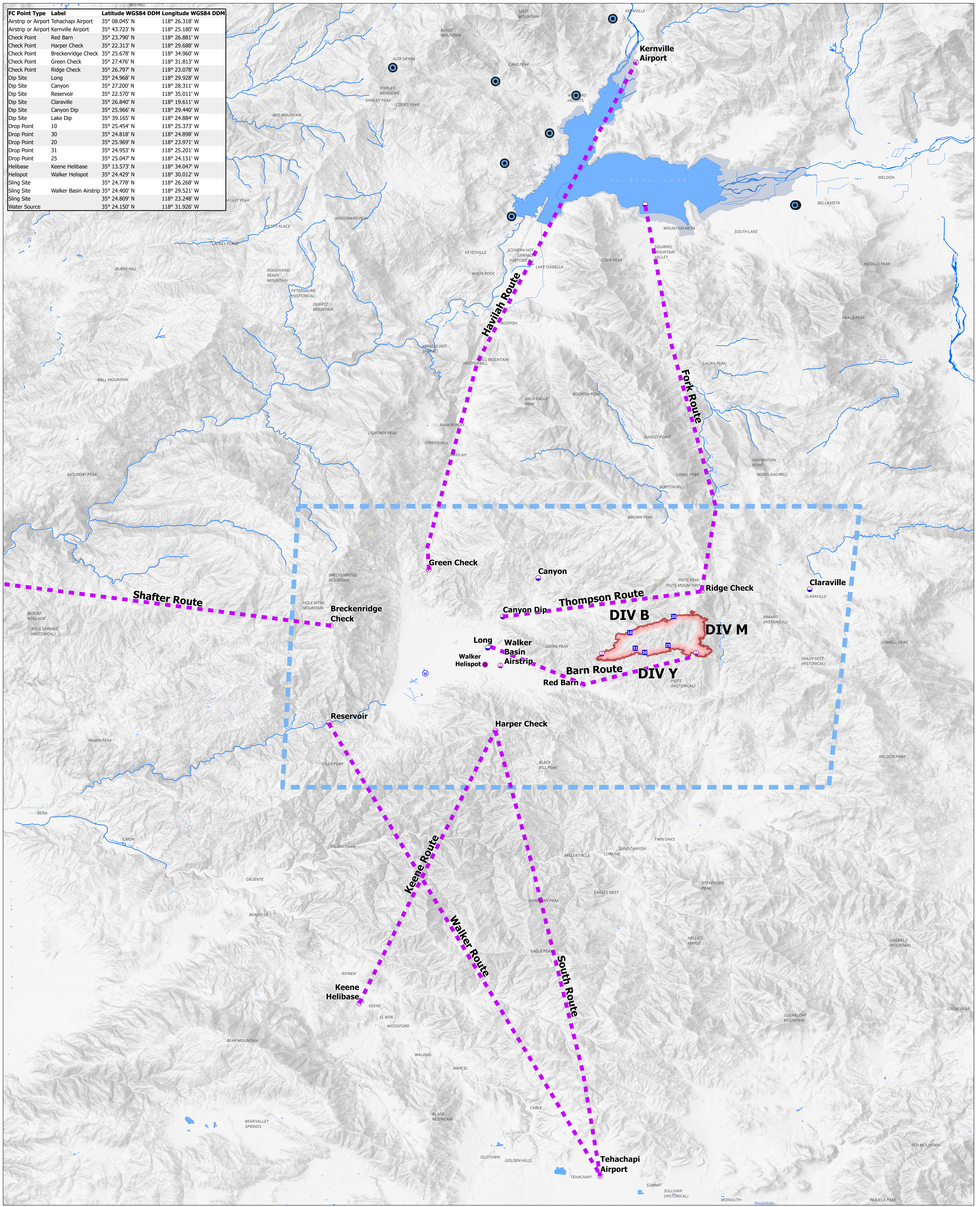


FC Point Type	Label	Latitude WGS84 DDM	Longitude WGS84 DDM
Airstrip or Airport	Tehachapi Airport	35° 08.045' N	118° 26.318' W
Airstrip or Airport	Kernville Airport	35° 43.723' N	118° 25.180' W
Check Point	Red Barn	35° 23.790' N	118° 26.881' W
Check Point	Harper Check	35° 22.313' N	118° 29.688' W
Check Point	Breckenridge Check	35° 25.678' N	118° 34.960' W
Check Point	Green Check	35° 27.476' N	118° 31.813' W
Check Point	Ridge Check	35° 26.797' N	118° 23.078' W
Dip Site	Long	35° 24.968' N	118° 29.928' W
Dip Site	Canyon	35° 27.200' N	118° 28.311' W
Dip Site	Reservoir	35° 22.570' N	118° 35.011' W
Dip Site	Claraville	35° 26.840' N	118° 19.611' W
Dip Site	Canyon Dip	35° 25.966' N	118° 29.440' W
Dip Site	Lake Dip	35° 39.165' N	118° 24.884' W
Drop Point	10	35° 25.454' N	118° 25.373' W
Drop Point	30	35° 24.818' N	118° 24.898' W
Drop Point	20	35° 25.969' N	118° 23.971' W
Drop Point	31	35° 24.953' N	118° 25.201' W
Drop Point	25	35° 25.047' N	118° 24.151' W
Helibase	Keene Helibase	35° 13.573' N	118° 34.047' W
Helispot	Walker Helispot	35° 24.429' N	118° 30.012' W
Sling Site		35° 24.778' N	118° 26.268' W
Sling Site	Walker Basin Airstrip	35° 24.400' N	118° 29.521' W
Sling Site		35° 24.809' N	118° 23.248' W
Water Source		35° 24.150' N	118° 31.926' W



Symbol	Description
■	Peak Fire
■	Routes
■	UAS Operations
■	YFS
■	Label Point
■	Airstrip or Airport
●	Check Point
○	Dip Site
○	Helispot
○	Helibase
○	Sling Site
■	Drop Point
○	Water Source
—	Dam/Weir
—	Dam/Weir: Construction Material = Nonearth
—	Stream/River
—	Canal/Ditch

AIR OPERATIONS
 Peak Fire
 CA-CND-002374
 7/25/2021

0 0.5 1 2 3 4 Miles

Scale: 1:65,000

Map Updated: 7/24/2021 10:00 AM