

Pilot Map

French

CA-CND-002796

8/26/21

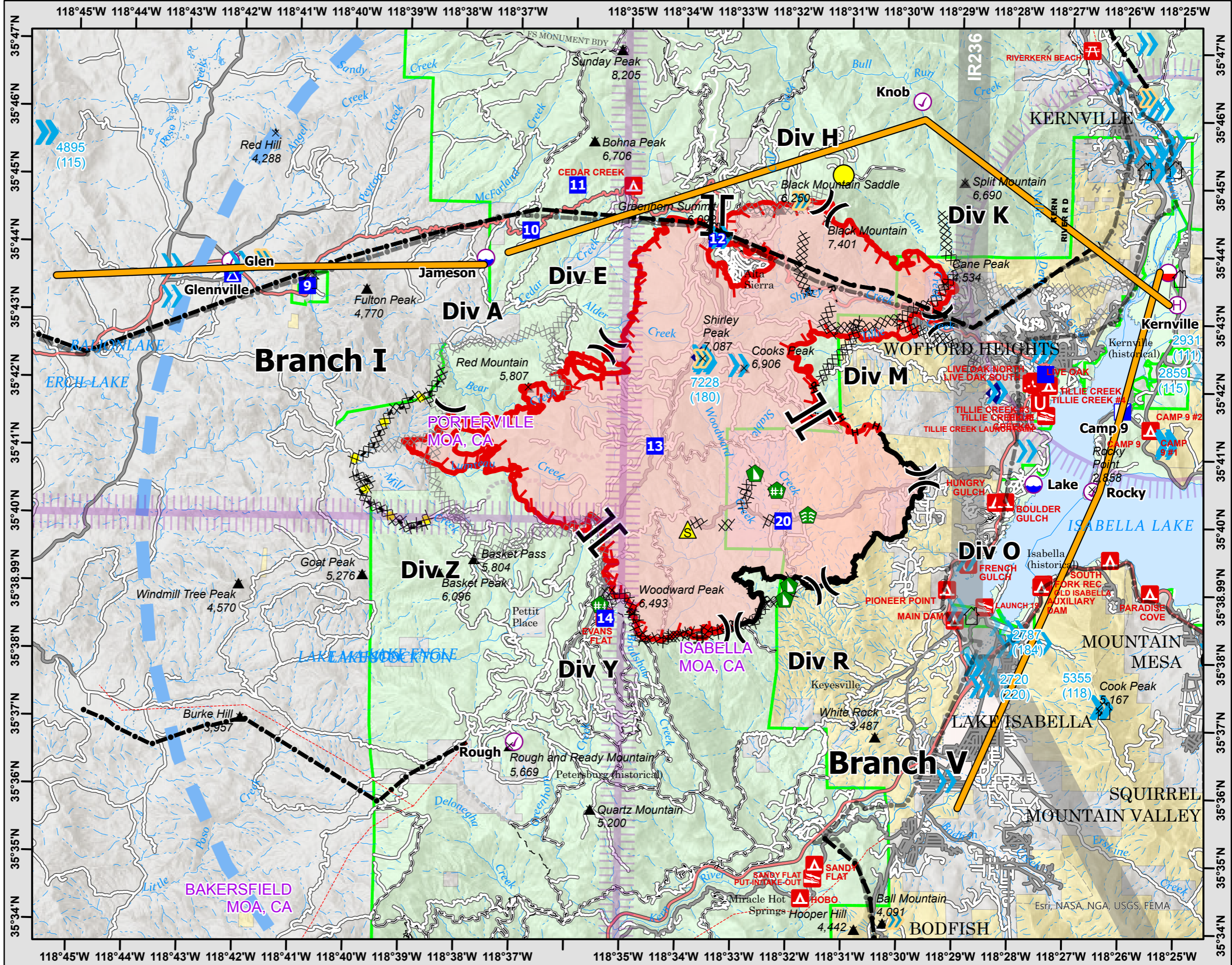


- Powerline
- Telephone wires
- Power Transmission Line
- Check Point
- Dip Site
- Mobile Retardant Base
- Helibase
- Division Break
- Branch Break
- Incident Command Post
- Drop Point
- Camp
- Stream Crossing
- Fence - Cut/Damaged
- Dozer Push
- Repeater
- Safety Zone
- Completed Dozer Line
- Completed Hand Line
- Completed Road as Line
- Planned Dozer Line
- Planned Hand Line
- Highlighted Feature
- Route
- Temporary Flight Restriction
- Fire Edge
- Contained Line
- Wildfire Daily Fire Perimeter
- Flight Paths
- Avoidance Area

0 1 2 Miles



Prepared by: CAIIMT12 8/25/2021
21:00



Esri, NASA, NGA, USGS, FEMA

FeatureCategory	Label	LatWGS84_DDM	LongWGS84_DDM
Incident Command Post	Camp 9	35° 41.71576248' N	118° 26.03001747' W
Drop Point	12	35° 44.18399784' N	118° 33.41160348' W
Dip Site	Jameson	35° 43.84380074' N	118° 37.59374398' W
Drop Point	20	35° 40.03099471' N	118° 32.14140911' W
Helibase	Kernville	35° 43.30420149' N	118° 25.06714186' W
Drop Point	11	35° 44.94230097' N	118° 35.95374381' W
Drop Point	9	35° 43.39230053' N	118° 40.81774450' W
Drop Point	13	35° 41.10830070' N	118° 34.48074319' W
Drop Point	10	35° 44.26530087' N	118° 36.78774388' W
Drop Point	14	35° 38.55530037' N	118° 35.33074310' W
Camp	Glennville	35° 43.54830047' N	118° 42.17374469' W
Dip Site	Lake	35° 40.62661345' N	118° 27.61979947' W
Drop Point	21	35° 42.25198013' N	118° 27.43083105' W