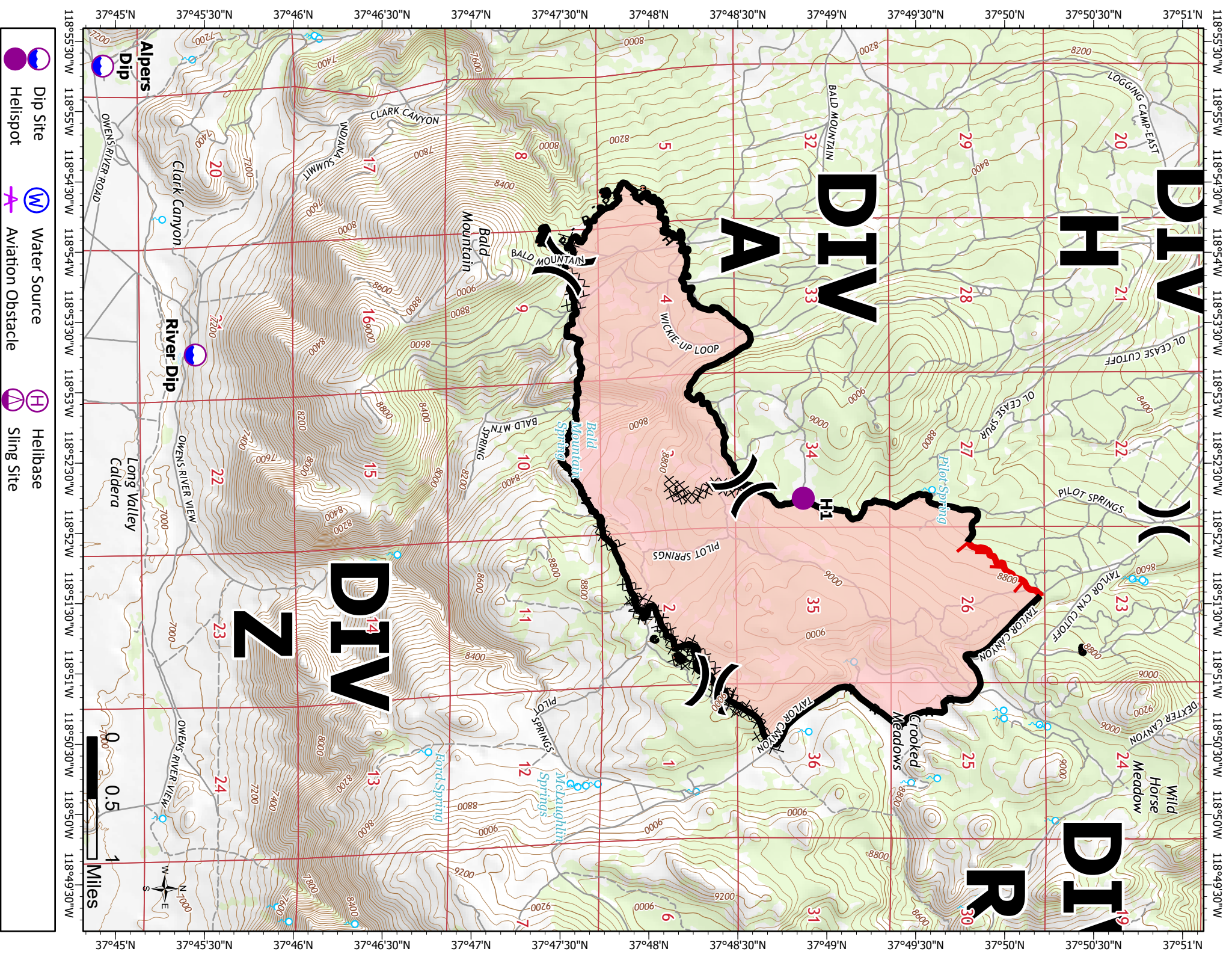


    TFR  Helibase  Helispot  Water Source  Completed Dozer Line  Sling Site  Dip Site  Fire Edge  Contained Line



Feature/Category	Label	Comments	LatWGS84	DDM	LongWGS84	DDM
Incident Command Post		Canyon Lodge in Mammoth	37° 38.689' N		119° 00.115' W	
Dip Site	River Dip	7,100 ft.	37° 45.449' N		118° 53.269' W	
Dip Site	Alpers Dip	7,100 ft.	37° 44.928' N		118° 55.324' W	
Helibase	Mammoth Helibase	7,700 ft.	37° 38.880' N		118° 56.900' W	
Helispot	H1	8,914 HOGE	37° 48.868' N		118° 52.250' W	



Legend:

- Helibase
- Dip Site
- Helispot
- Water Source
- Aviation Obstacle
- Helibase
- Sling Site