

REPAIR

Dexter

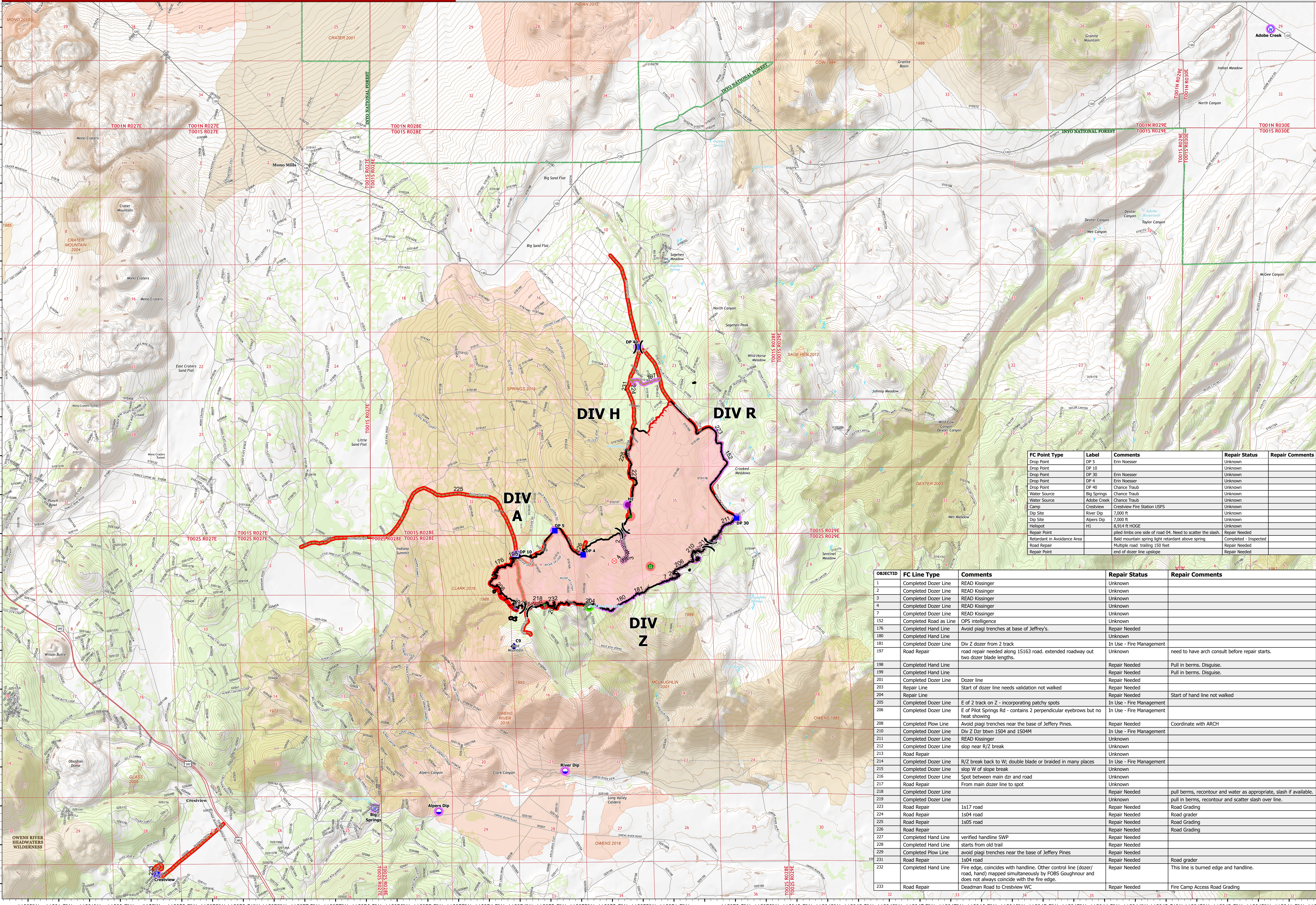
7/20/2021

7/20/2021

CA-INF-001695

Dexter

REPAIR



FC Point Type	Label	Comments	Repair Status	Repair Comments
Drop Point	DP 5	Erin Noesser	Unknown	
Drop Point	DP 10	Unknown	Unknown	
Drop Point	DP 30	Erin Noesser	Unknown	
Drop Point	DP 4	Erin Noesser	Unknown	
Drop Point	DP 40	Chance Traub	Unknown	
Water Source	Big Springs	Chance Traub	Unknown	
Water Source	Adobe Creek	Chance Traub	Unknown	
Camp	Crestview	Crestview Fire Station USFS	Unknown	
Dip Site	7200 ft	River Dip	Unknown	
Dip Site	7200 ft	Alpers Dip	Unknown	
Helispot	H1	8,914 ft HOGUE	Unknown	
Repair Point		filled limbs one side of road 04. Need to scatter the slash.	Repair Needed	
Retardant in Avoidance Area		Bald mountain spring light retardant above spring	Completed - Inspected	
Road Repair		Multiple road trailing 150 feet	Repair Needed	
Repair Point		end of dozer line upslope.	Repair Needed	

OBJECTID	FC Line Type	Comments	Repair Status	Repair Comments
1	Completed Dozer Line	READ Kissinger	Unknown	
2	Completed Dozer Line	READ Kissinger	Unknown	
3	Completed Dozer Line	READ Kissinger	Unknown	
4	Completed Dozer Line	READ Kissinger	Unknown	
7	Completed Dozer Line	READ Kissinger	Unknown	
152	Completed Road as Line	OPS intelligence	Unknown	
176	Completed Hand Line	Avoid piagi trenches at base of Jeffrey's.	Repair Needed	
180	Completed Hand Line		Unknown	
181	Completed Dozer Line	Div Z dozer from 2 track	In Use - Fire Management	
197	Road Repair	road repair needed along 1S163 road, extended roadway out two dozer blade lengths.	Unknown	need to have arch consult before repair starts.
198	Completed Hand Line		Repair Needed	pull in berms, Disguise.
199	Completed Hand Line		Repair Needed	pull in berms, Disguise.
201	Completed Dozer Line	Dozer line	Repair Needed	
203	Repair Line		Repair Needed	
204	Repair Line	Start of dozer line needs validation not walked	Repair Needed	
205	Completed Dozer Line	E of 2 track on Z - incorporating patchy spots	In Use - Fire Management	Start of hand line not walked
206	Completed Dozer Line	E of Pilot Springs Rd - contains 2 perpendicular eyebrows but no heat showing	In Use - Fire Management	
208	Completed Plow Line	Avoid piagi trenches near the base of Jeffrey Pines.	Repair Needed	Coordinate with ARCH
210	Completed Dozer Line	Div Z DZR btwn 1S04 and 1S04M	In Use - Fire Management	
211	Completed Dozer Line	READ Kissinger	Unknown	
212	Completed Dozer Line	slop near R/Z break	Unknown	
213	Road Repair		Unknown	
214	Completed Dozer Line	R/Z break back to W; double blade or braided in many places	In Use - Fire Management	
215	Completed Dozer Line	slop W of slope break	Unknown	
216	Completed Dozer Line	Spot between main dnr and road	Unknown	
217	Road Repair	From main dozer line to spot	Unknown	
218	Completed Dozer Line		Repair Needed	pull berms, recontour and scatter as appropriate, slash if available.
219	Completed Dozer Line		Unknown	pull in berms, recontour and scatter slash over line.
223	Road Repair	1s17 road	Repair Needed	Road Grading
224	Road Repair	1s04 road	Repair Needed	Road Grading
225	Road Repair	1s05 road	Repair Needed	Road Grading
226	Road Repair		Repair Needed	Road Grading
227	Road Repair	verified handline SWP	Repair Needed	
228	Completed Hand Line	starts from old trail	Repair Needed	
229	Completed Plow Line	avoid piagi trenches near the base of Jeffrey Pines	Repair Needed	
231	Road Repair	1S04 road	Repair Needed	Road grader
232	Completed Hand Line	Fire edge, coincides with handline. Other control line (dozer/road, hand) mapped simultaneously by FOBS Goughnour and does not always coincide with the fire edge.	Repair Needed	This line is burned edge and handline.
233	Road Repair	Deadman Road to Crestview WC	Repair Needed	Fire Camp Access Road Grading

0 1 2 3 4 Miles

<p>Air Operations</p> <ul style="list-style-type: none"> ● Dip Site ● Helispot - Assignment Breaks - Division Break 	<p>Logistics</p> <ul style="list-style-type: none"> ■ Drop Point ■ Camp - Fire Origin 	<p>Repair</p> <ul style="list-style-type: none"> ■ Road Repair ■ Retardant in Avoidance Area ■ Repair Point ■ Communications ◆ Repeater 	<p>Water</p> <ul style="list-style-type: none"> ● Water Source - Polygon Type - Wildfire Daily Fire Perimeter - Unknown 	<p>Repair Status Point</p> <ul style="list-style-type: none"> ● Completed - Inspected ● Repair Needed ● Unknown - Repair Status Line - In Use - Fire Management 	<p>Repair Needed</p> <ul style="list-style-type: none"> - Unknown
--	--	---	--	--	--

Datum: NAD 1983, Zone 10