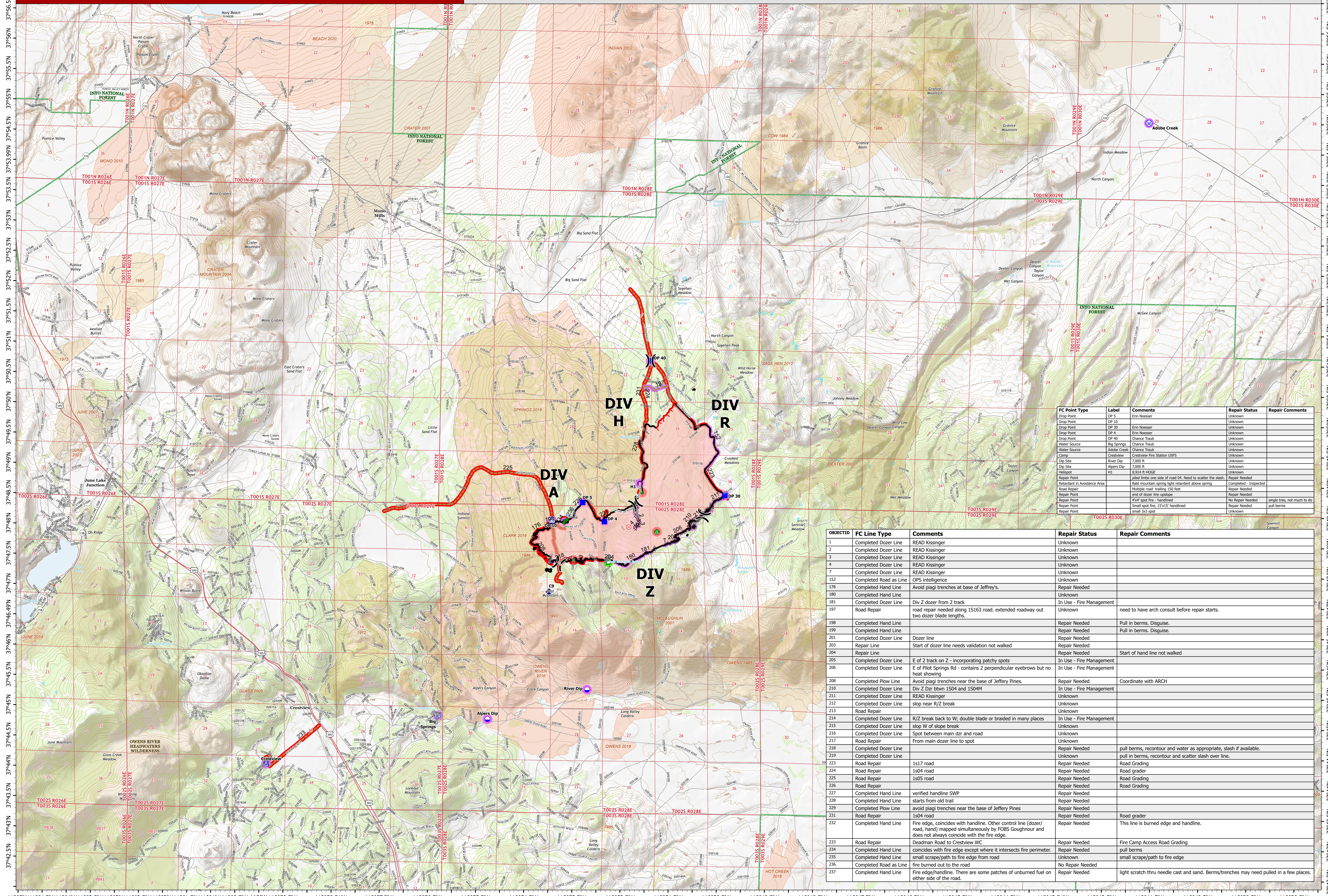


# REPAIR

# Dexter Final



FC Point Type	Label	Comments	Repair Status	Repair Comments
Drop Point	DP 5	Erin Neeser	Unknown	
Drop Point	DP 10	Erin Neeser	Unknown	
Drop Point	DP 30	Erin Neeser	Unknown	
Drop Point	DP 4	Erin Neeser	Unknown	
Drop Point	DP 40	Chance Traub	Unknown	
Water Source	Big Springs	Chance Traub	Unknown	
Water Source	Adobe Creek	Chance Traub	Unknown	
Camp	Crestview	Crestview Fire Station USPS	Unknown	
Dip Site	Alpers Dip	2,000 ft	Unknown	
Dip Site	Alpers Dip	7,000 ft	Unknown	
Helispot	H1	8,914 ft HOGE	Unknown	
Repair Point		zoned limits one side of road OK. need to scatter the slash.	Repair Needed	
Retardant in Avoidance Area		Ball mountain spring light retardant above spring	Completed - Inspected	
Road Repair		Multiple road trailing 150 feet	Repair Needed	
Repair Point		end of dozer line upslope	Repair Needed	
Repair Point		4x4 spot fire - handlined	No Repair Needed	single tree, not much to do
Repair Point		Small spot fire, 15'x15' handlined	Repair Needed	pull berms
Repair Point		small 3x3 spot	Unknown	

OBJECTID	FC Line Type	Comments	Repair Status	Repair Comments
1	Completed Dozer Line	READ Kissinger	Unknown	
2	Completed Dozer Line	READ Kissinger	Unknown	
3	Completed Dozer Line	READ Kissinger	Unknown	
4	Completed Dozer Line	READ Kissinger	Unknown	
7	Completed Dozer Line	READ Kissinger	Unknown	
152	Completed Road as Line	OPS intelligence	Repair Needed	
176	Completed Hand Line	Avoid piagi trenches at base of Jeffrey's.	Repair Needed	
180	Completed Hand Line	Unknown	Unknown	
181	Completed Dozer Line	Div Z dozer from 2 track	In Use - Fire Management	
197	Road Repair	road repair needed along 15163 road. extended roadway out two dozer blade lengths.	Unknown	need to have arch consult before repair starts.
198	Completed Hand Line		Repair Needed	pull in berms. Disguise.
199	Completed Hand Line		Repair Needed	pull in berms. Disguise.
201	Completed Dozer Line	Dozer line	Repair Needed	
203	Repair Line	Start of dozer line needs validation not walked	Repair Needed	
204	Repair Line		Repair Needed	Start of hand line not walked
205	Completed Dozer Line	E of 2 track on Z - incorporating patchy spots	In Use - Fire Management	
206	Completed Dozer Line	E of Pilot Springs Rd - contains 2 perpendicular eyebrows but no heat showing	In Use - Fire Management	
208	Completed Plow Line	Avoid piagi trenches near the base of Jeffrey Pines.	Repair Needed	Coordinate with ARCH
210	Completed Dozer Line	Div Z Dsr btwn 1504 and 1504M	In Use - Fire Management	
211	Completed Dozer Line	READ Kissinger	Unknown	
212	Completed Dozer Line	stop near R/Z break	Unknown	
213	Road Repair		Unknown	
214	Completed Dozer Line	R/Z break back to W; double blade or braided in many places	In Use - Fire Management	
215	Completed Dozer Line	stop W of slope break	Unknown	
216	Completed Dozer Line	Spot between main dnr and road	Unknown	
217	Road Repair	From main dozer line to spot	Unknown	
218	Completed Dozer Line		Repair Needed	pull berms, recontour and water as appropriate, slash if available.
219	Completed Dozer Line		Unknown	pull in berms, recontour and scatter slash over line.
223	Road Repair	1517 road	Repair Needed	Road Grading
224	Road Repair	1504 road	Repair Needed	Road grader
225	Road Repair	1505 road	Repair Needed	Road Grading
226	Road Repair		Repair Needed	Road Grading
227	Completed Hand Line	verified handline SWP	Repair Needed	
228	Completed Hand Line	starts from old trail	Repair Needed	
229	Completed Plow Line	avoid piagi trenches near the base of Jeffrey Pines	Repair Needed	
231	Road Repair	1504 road	Repair Needed	Road grader
232	Completed Hand Line	Fire edge, coincides with handline. Other control line (dozer/road, hand) mapped simultaneously by FOBS Goughnour and does not always coincide with the fire edge.	Repair Needed	This line is burned edge and handline.
233	Road Repair	Deadman Road to Crestview WC	Repair Needed	Fire Camp Access Road Grading
234	Completed Hand Line	coincides with fire edge except where it intersects fire perimeter.	Repair Needed	pull berms
235	Completed Hand Line	small scrape/path to fire edge from road	Unknown	small scrape/path to fire edge
236	Completed Road as Line	fire burned out to the road	No Repair Needed	
237	Completed Hand Line	Fire edge/handline. There are some patches of unburned fuel on either side of the road.	Repair Needed	light scratch thru needle cast and sand. Berms/trenches may need pulled in a few places.

0 1 2 3 4 Miles

<b>Air Operations</b> <ul style="list-style-type: none"> <li><span style="color: blue;">●</span> Dip Site</li> <li><span style="color: purple;">●</span> Helispot</li> <li><span style="color: red;">X</span> Assignment Breaks</li> <li><span style="color: red;">X</span> Division Break</li> </ul>	<b>Logistics</b> <ul style="list-style-type: none"> <li><span style="color: blue;">■</span> Drop Point</li> <li><span style="color: blue;">■</span> Camp</li> <li><span style="color: red;">■</span> Fire Origin</li> </ul>	<b>Repair</b> <ul style="list-style-type: none"> <li><span style="color: green;">■</span> Road Repair</li> <li><span style="color: green;">■</span> Retardant in Avoidance Area</li> <li><span style="color: green;">■</span> Repair Point</li> <li><span style="color: blue;">■</span> Communications</li> <li><span style="color: blue;">■</span> Repeater</li> </ul>	<b>Water</b> <ul style="list-style-type: none"> <li><span style="color: blue;">●</span> Water Source</li> <li><span style="color: blue;">■</span> Polygon Type</li> <li><span style="color: purple;">■</span> Wildfire Daily Fire Perimeter</li> <li><span style="color: purple;">■</span> Unknown</li> </ul>	<b>Repair Status Point</b> <ul style="list-style-type: none"> <li><span style="color: green;">●</span> Completed - Inspected</li> <li><span style="color: red;">●</span> Repair Needed</li> <li><span style="color: blue;">●</span> No Repair Needed</li> <li><span style="color: purple;">●</span> Unknown</li> </ul>	<b>Repair Status Line</b> <ul style="list-style-type: none"> <li><span style="color: pink;">—</span> In Use - Fire Management</li> <li><span style="color: red;">—</span> Repair Needed</li> <li><span style="color: blue;">—</span> No Repair Needed</li> <li><span style="color: purple;">—</span> Unknown</li> </ul>
--	--	--	--	---	--

Datum: NAD 1983, Zone 10