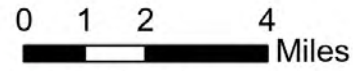


Transportation

KNP Complex
CA-KNP-000122
09/18/2021

3,162 and 8,203 acres at 09/16/2021

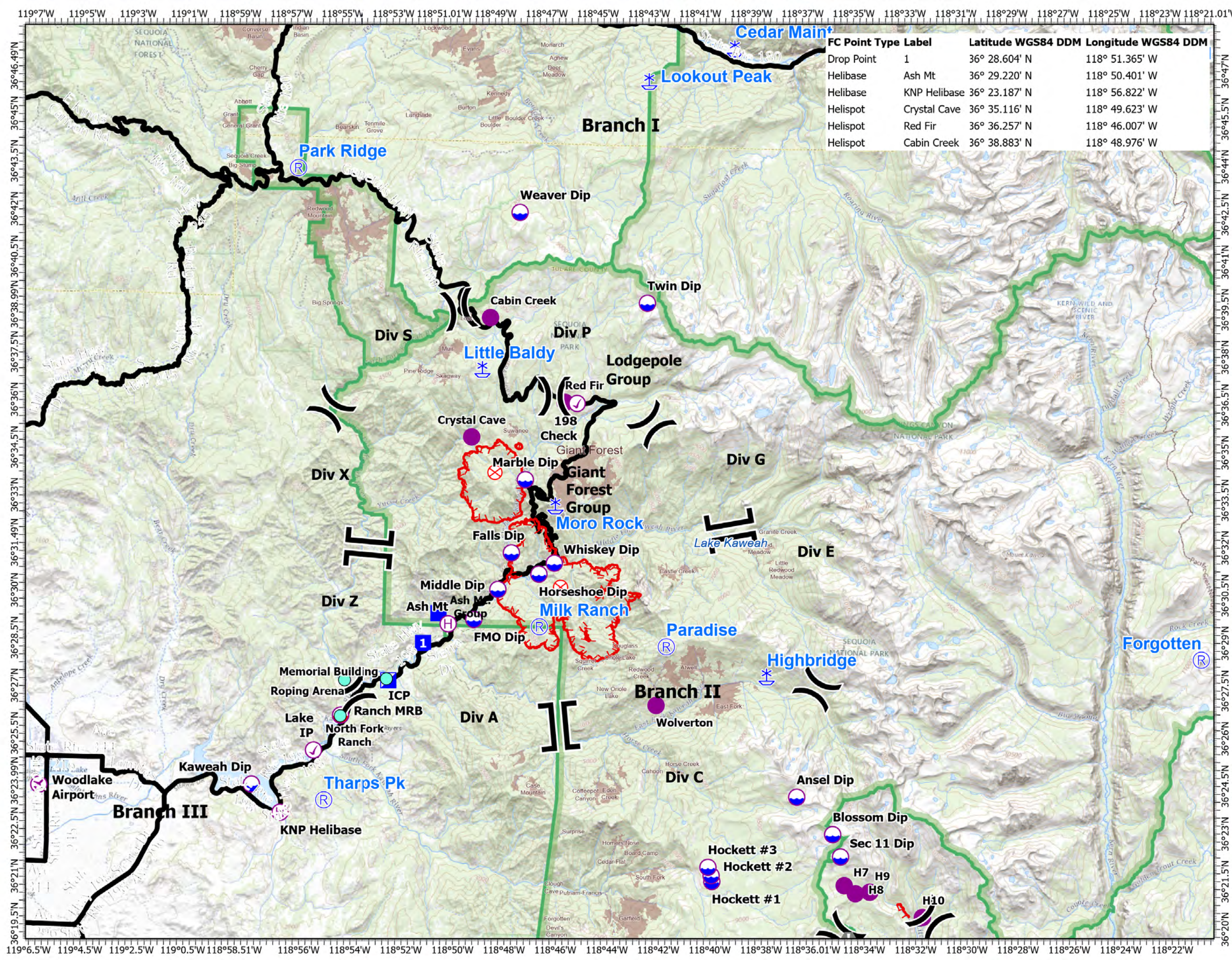


- Major Roads
- Airstrip or Airport
- Check Point
- Dip Site
- Mobile Retardant Base
- Helispot
- Helibase
- Division Break
- Branch Break
- Incident Command Post
- Drop Point
- Fire Origin
- Value at Risk
- Microwave Stn
- Repeater
- Fire Edge 9/14/2021
- NPS Boundaries
- Sequoia Grove
- Points of Interest



SA Blue Team Situation Unit
09/17/2021 2109

North American 1983 Datum.



FC Point Type	Label	Latitude WGS84 DDM	Longitude WGS84 DDM
Drop Point	1	36° 28.604' N	118° 51.365' W
Helibase	Ash Mt	36° 29.220' N	118° 50.401' W
Helibase	KNP Helibase	36° 23.187' N	118° 56.822' W
Helispot	Crystal Cave	36° 35.116' N	118° 49.623' W
Helispot	Red Fir	36° 36.257' N	118° 46.007' W
Helispot	Cabin Creek	36° 38.883' N	118° 48.976' W