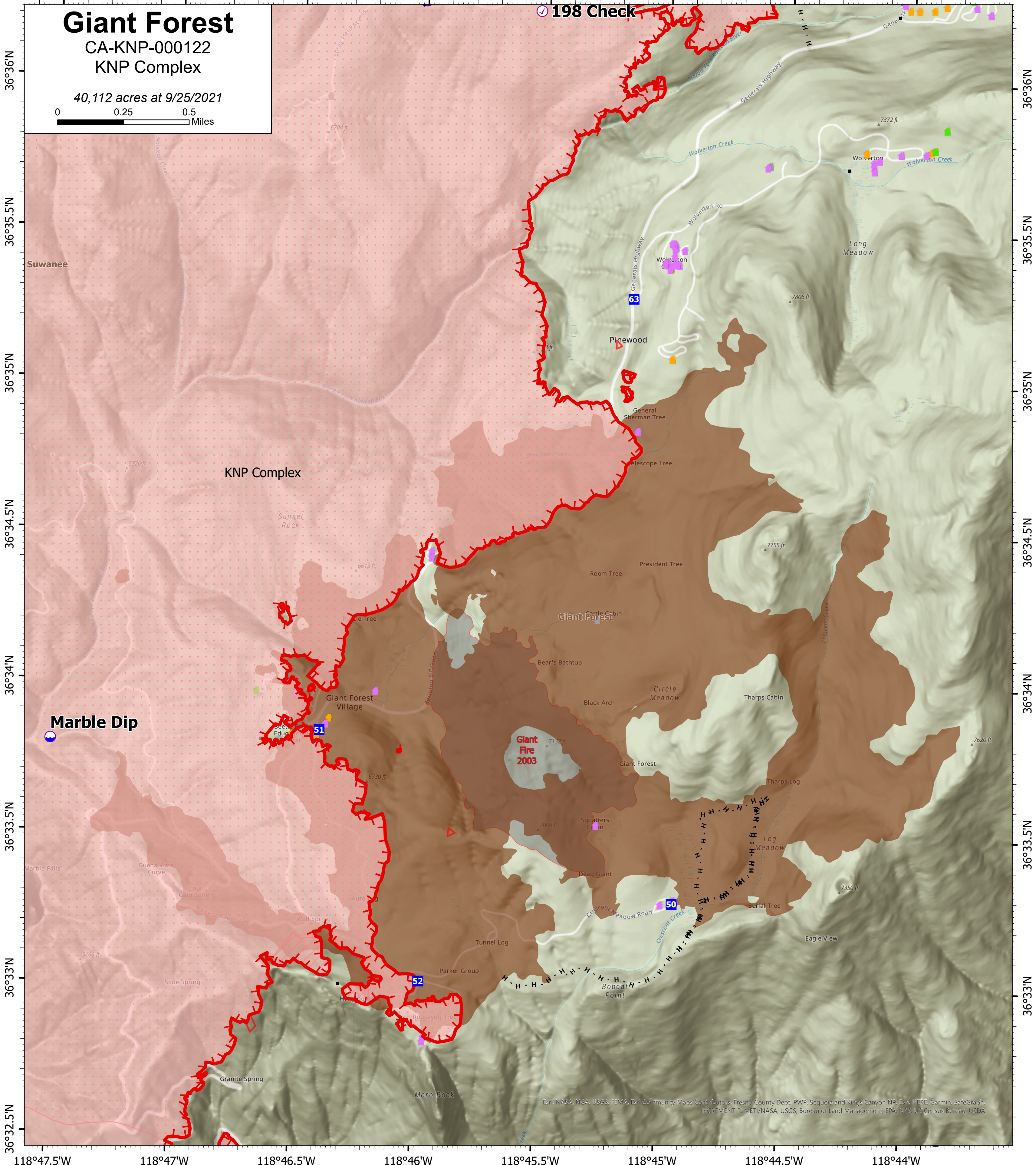
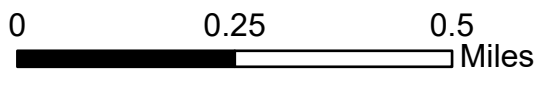


118°47.5'W 118°47'W 118°46.5'W 118°46'W 118°45.5'W 118°45'W 118°44.5'W 118°44'W

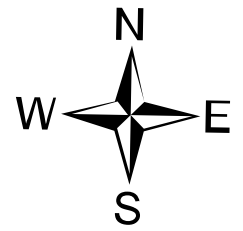
Giant Forest

CA-KNP-000122
KNP Complex

40,112 acres at 9/25/2021



118°47.5'W 118°47'W 118°46.5'W 118°46'W 118°45.5'W 118°45'W 118°44.5'W 118°44'W



9/24/2021 1840

North American 1983 Datum.

- Check Point
- Dip Site
- Hellspot
- Drop Point
- Internet Access
- Water Source

- Completed Hand Line
- Fire Edge
- Wildfire Daily Fire Perimeter
- IR Heat Perimeter
- IR Intense Heat
- IR Scattered Heat
- NPS_Boundaries

- Tulare County Address Points (Structures)
- Defensible - Stand Alone
- Defensible - Prep and Hold
- Non-Defensible - Prep and Leave
- Unknown
- Sequoia Groves
- firePerimeterHistory_from2000_KNPComplex

Esri, NASA, NGA, USGS, FEMA, Esri Community Maps Contributors, Fresno County Dept. PWP, Sequoia and Kings Canyon NP, Esri, HERE, Garmin, SafeGraph, INCREMENT P, METI/NASA, USGS, Bureau of Land Management, EPA, NPS, US Census Bureau, USDA