

118°45'W

118°44.5'W

118°44'W

118°43.51'W

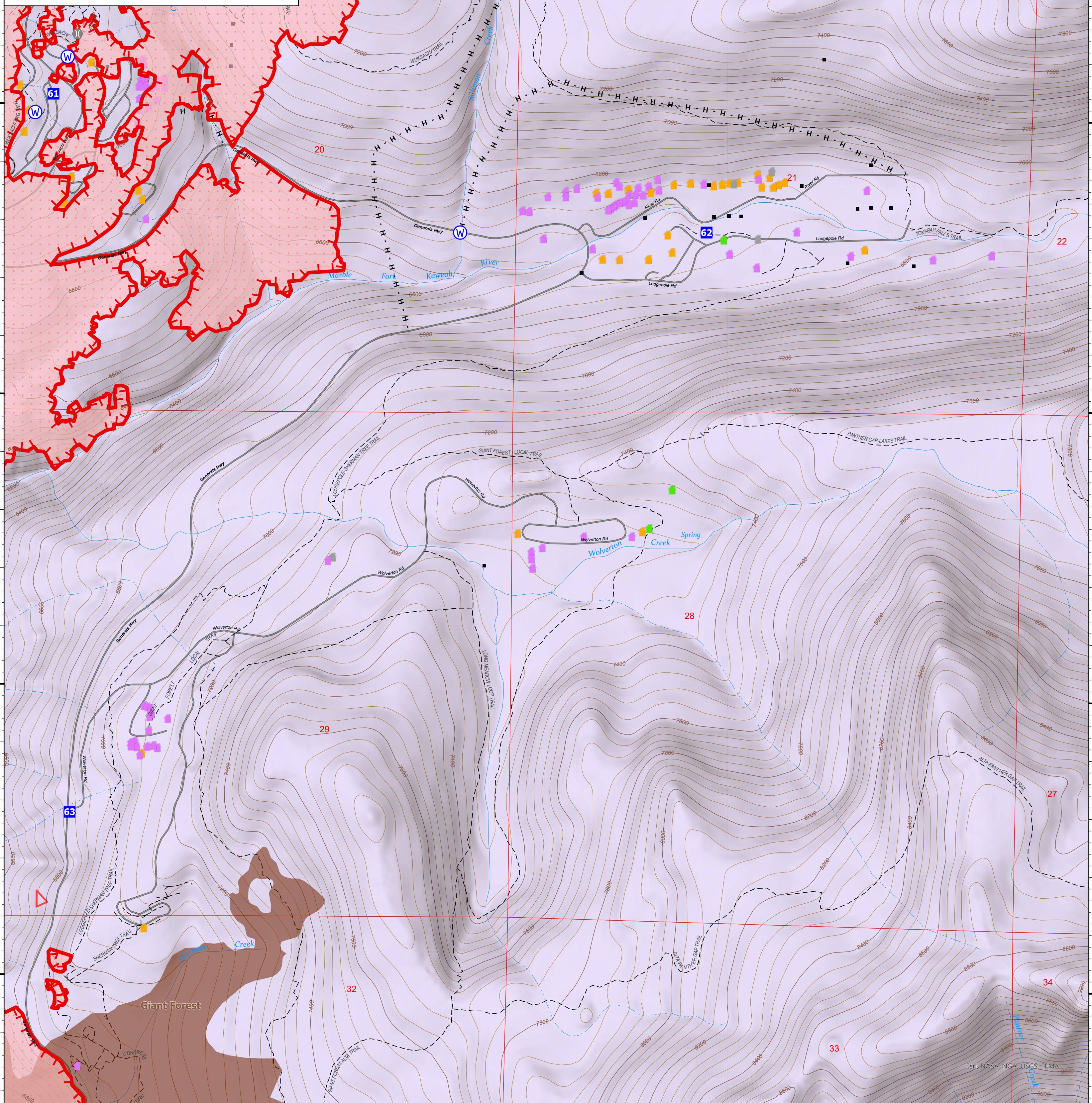
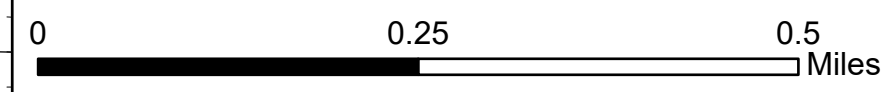
118°43'W

Lodgepole

CA-KNP-000122

KNP Complex

40,112 acres at 9/25/2021



36°36.5'N

36°36.5'N

36°36'N

36°36'N

36°35.5'N

36°35.5'N

36°35'N

36°35'N

118°45'W

118°44.5'W

118°44'W

118°43.51'W

118°43'W



- Drop Point
- Bridge
- Water Source
- H - Completed Hand Line
- Fire Edge
- Wildfire Daily Fire Perimeter
- IR Heat Perimeter
- IR Scattered Heat
- NPS_Boundaries
- Tulare County Address Points (Structures)
- Defensible - Stand Alone
- Defensible - Prep and Hold
- Non-Defensible - Prep and Leave
- Unknown
- Sequoia Groves
- Trail
- Paved Roads
- Spring/Seep
- Stream/River, Artificial Path
- Township
- Section
- Normal Index
- Normal Intermediate
- Freshwater Emergent Wetland
- Freshwater Forested Wetland
- Freshwater Forested/Scrub
- Freshwater Forested/Scrub Wetland
- Freshwater Forested/Shrub Wetland
- Freshwater Pond
- Palustrine Forested/Scrub
- National Park Service Lands
- State Boundary Fill

9/24/2021 1818

North American 1983 Datum, LatLong Grid