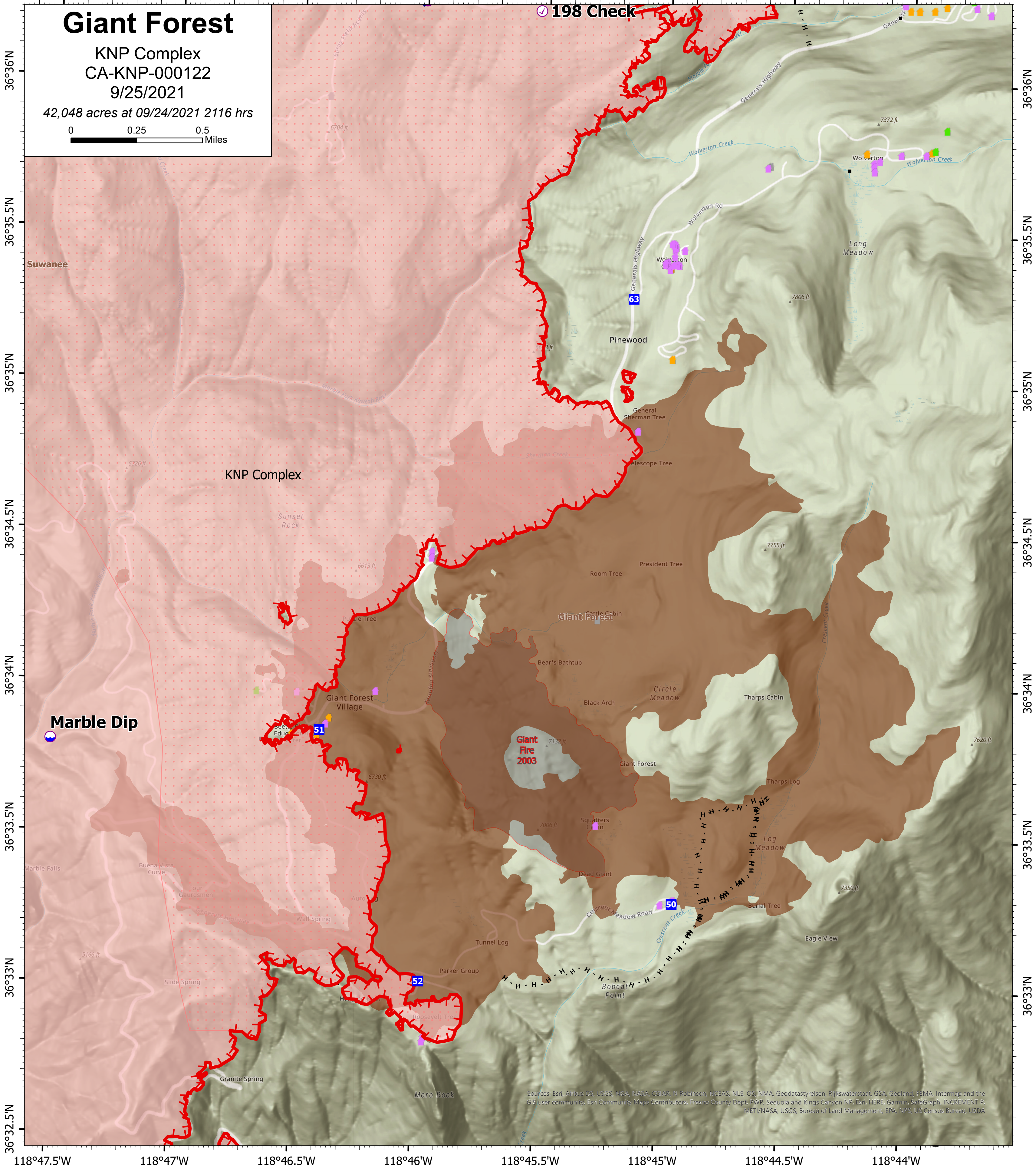
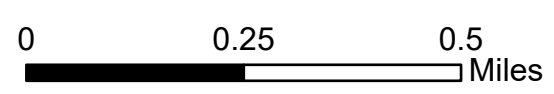


118°47.5'W 118°47'W 118°46.5'W 118°46'W 118°45.5'W 118°45'W 118°44.5'W 118°44'W

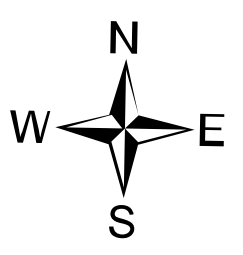
# Giant Forest

KNP Complex  
CA-KNP-000122  
9/25/2021

42,048 acres at 09/24/2021 2116 hrs



118°47.5'W 118°47'W 118°46.5'W 118°46'W 118°45.5'W 118°45'W 118°44.5'W 118°44'W



9/25/2021 0825

North American 1983 Datum. Lat/Long Grid

- Check Point
- Dip Site
- Helispot
- Drop Point
- Internet Access
- Water Source

- Completed Hand Line
- Fire Edge
- Wildfire Daily Fire Perimeter
- IR Heat Perimeter
- IR Scattered Heat
- NPS\_Boundaries
- Tulare County Address Points (Structures)

- Defensible - Stand Alone
- Defensible - Prep and Hold
- Non-Defensible - Prep and Leave
- Unknown
- Sequoia Groves
- firePerimeterHistory\_from2000\_KNPComplex



Sources: Esri, Airbus DS, USGS, NGA, NASA, CGIAR, N Robinson, NOAA, NLS, OS, NMA, Geodatastyrelsen, Rijkswaterstaat, GSA, Geoland, FEMA, Intermap and the GIS user community; Esri Community; Mapbox Contributors; Fresno County Dept. SWP, Sequoia and Kings Canyon NP; Esri, HERE, Garmin, SafeGraph, INCREMENT P, METI/NASA, USGS, Bureau of Land Management, EPA, NPS, US Census Bureau, USDA