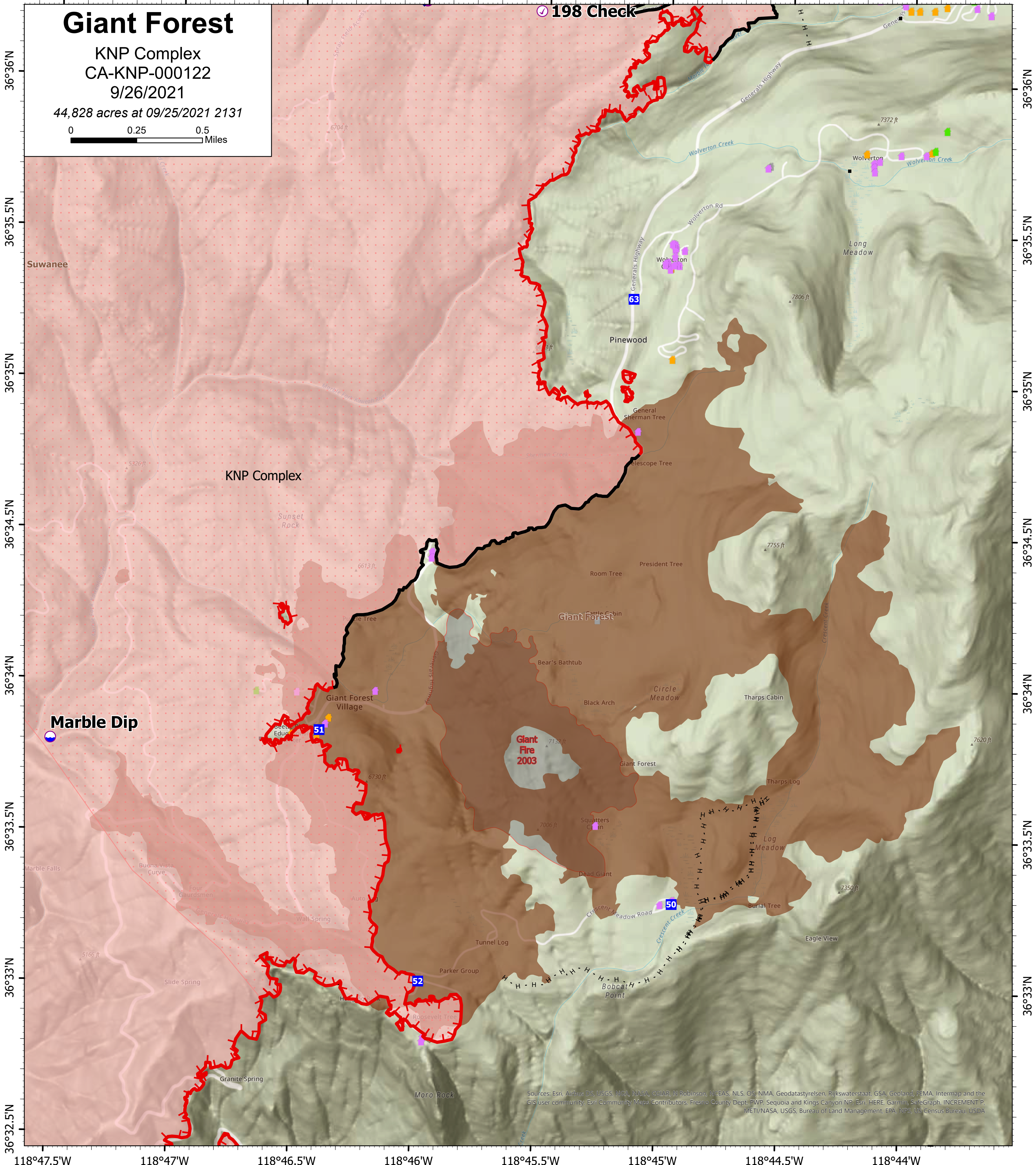
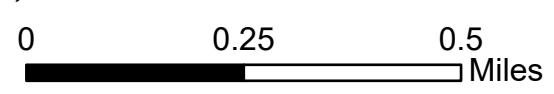


118°47.5'W 118°47'W 118°46.5'W 118°46'W 118°45.5'W 118°45'W 118°44.5'W 118°44'W

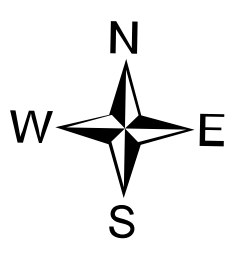
Giant Forest

KNP Complex
CA-KNP-000122
9/26/2021

44,828 acres at 09/25/2021 2131



118°47.5'W 118°47'W 118°46.5'W 118°46'W 118°45.5'W 118°45'W 118°44.5'W 118°44'W



9/26/2021 0541

North American 1983 Datum. Lat/Long Grid

- Check Point
- Dip Site
- Helispot
- Drop Point
- Internet Access
- Water Source

- Completed Hand Line
- Fire Edge
- Contained Line
- Wildfire Daily Fire Perimeter
- IR Heat Perimeter
- IR Scattered Heat
- NPS Boundaries

- Tulare County Address Points (Structures)
- Defensible - Stand Alone
- Defensible - Prep and Hold
- Non-Defensible - Prep and Leave
- Unknown
- Sequoia Groves
- firePerimeterHistory_from2000_KNPComplex



Sources: Esri, Airbus DS, USGS, NGA, NASA, CGIAR, N Robinson, NCEAS, NLS, OS, NMA, Geodatastyrelsen, Rijkswaterstaat, GSA, Geoland, FEMA, Intermap and the GIS user community, Esri Community, Mapbox Contributors, Fresno County Dept. PWP, Sequoia and Kings Canyon NP, Esri, HERE, Garmin, SafeGraph, INCREMENT P, METI/NASA, USGS, Bureau of Land Management, EPA, NPS, US Census Bureau, USDA