

118°45'W

118°44.5'W

118°44'W

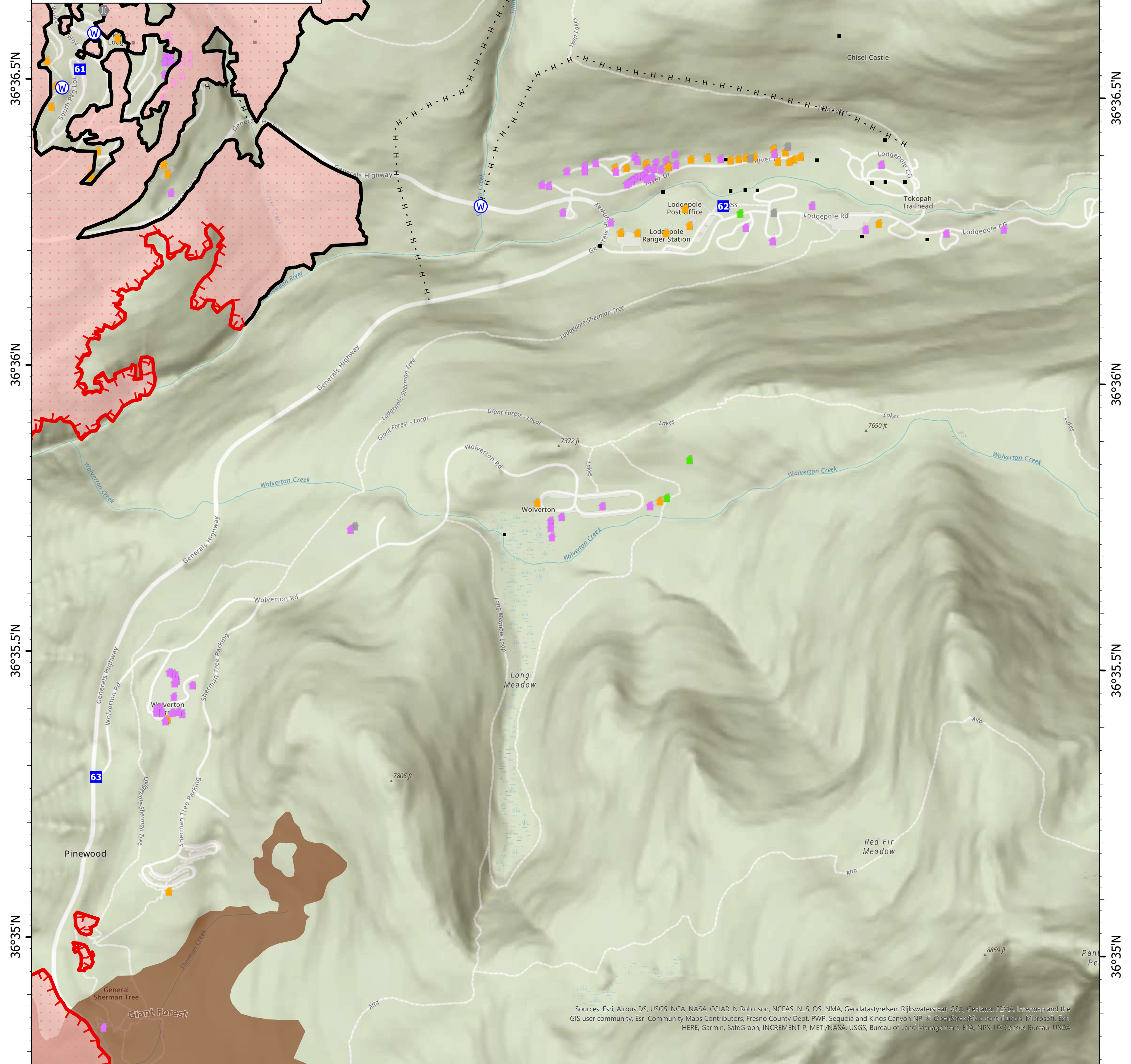
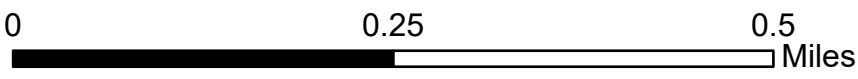
118°43.51'W

118°43'W

Lodgepole

KNP Complex
CA-KNP-000122
9/26/2021

44,828 acres at 09/25/2021 2131 hrs



Sources: Esri, Airbus DS, USGS, NGA, NASA, CGIAR, N Robinson, NCEAS, NLS, OS, NMA, Geodastystyrelsen, Rijkswaterstaat, GSA, GeoCloud, FEMA, Intermap and the GIS user community, Esri Community Maps Contributors, Fresno County Dept. PWP, Sequoia and Kings Canyon NP, © OpenStreetMap contributors, Microsoft, Esri, HERE, Garmin, SafeGraph, INCREMENT P, METI/NASA, USGS, Bureau of Land Management, EPA, NPS, US Census Bureau, USDA

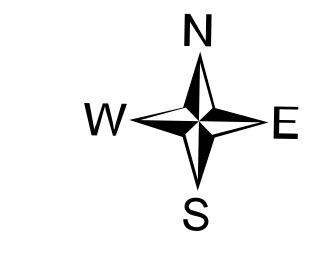
118°45'W

118°44.5'W

118°44'W

118°43.51'W

118°43'W



- Drop Point
- Bridge
- Water Source
- Completed Hand Line
- Fire Edge
- Contained Line
- Wildfire Daily Fire Perimeter
- IR Heat Perimeter
- IR Scattered Heat
- NPS_Boundaries
- Tulare County Address Points (Structures)
- Defensible - Stand Alone
- Defensible - Prep and Hold
- Non-Defensible - Prep and Leave
- Unknown
- Sequoia Groves

9/26/2021 0540

North American 1983 Datum. LatLong Grid

