

# OPERATIONS

## DIV A

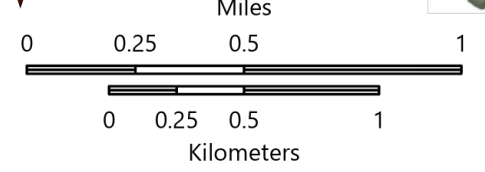
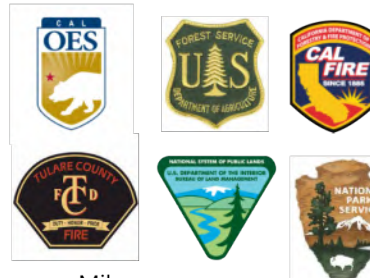
KNP Complex  
CA-KNP-000122

9/28/2021

48,344 acres at 09/28/2021 0115 hrs

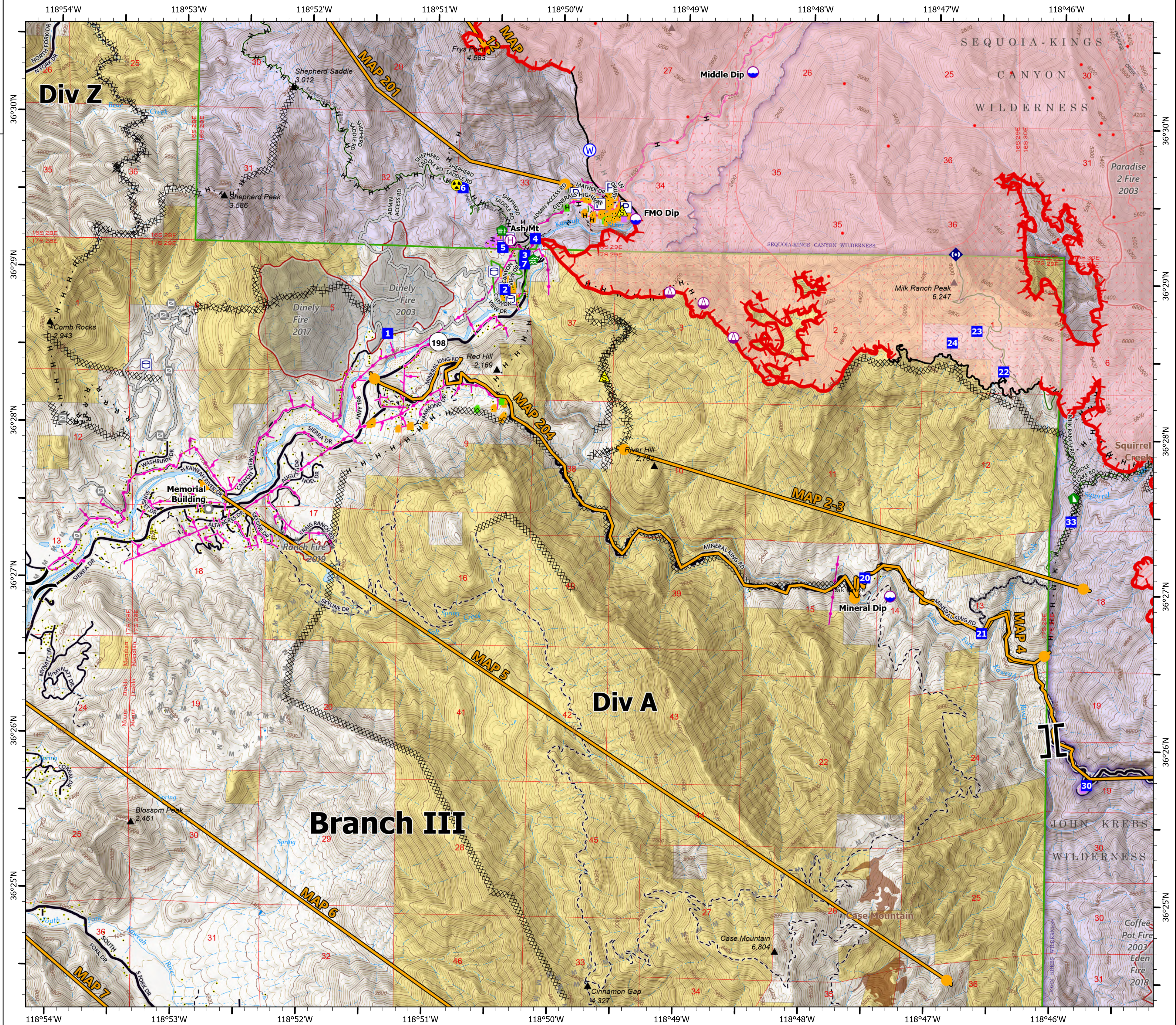


- Dip Site
- Helibase
- Sling Site
- Division Break
- Branch Break
- Drop Point
- Landmark
- Gate
- Water Development or Draft Site
- Fence - Cut/Damaged
- Dozer Push
- Repeater
- Safety Zone
- Hazard
- Water Source
- Pump
- Water Tank
- IR Isolated Heat Source
- Completed Dozer Line
- Completed Hand Line
- Completed Mixed Construction Line
- Completed Road as Line
- Planned Dozer Line
- Planned Hand Line
- Planned Mixed Construction Line
- Planned Road as Line
- Planned Secondary Line
- Access or Improved Road
- Management Action Point
- Fire Edge
- Contained Line
- Wildfire Daily Fire Perimeter
- IR Heat Perimeter
- IR Intense Heat
- IR Scattered Heat
- NPS Boundaries
- Tulare County Address Points (Structures)
- Defensible - Stand Alone
- Defensible - Prep and Hold
- Non-Defensible - Prep and Leave
- Unknown
- Sequoia Groves
- Trail
- Primary
- Secondary
- Local
- Private
- Bureau of Land Management Lands
- National Park Service Lands
- Private; Local Government; Undesignated
- Salt Creek Powerline
- Jordan Powerline
- NPS Powerline
- Fire History
- NPS Wilderness
- USFS Wilderness



1:28,000 - SWAINT2 GIS - 9/28/2021 0407

North American 1983 Datum, LatLong Grid



# OPERATIONS

## DIV C

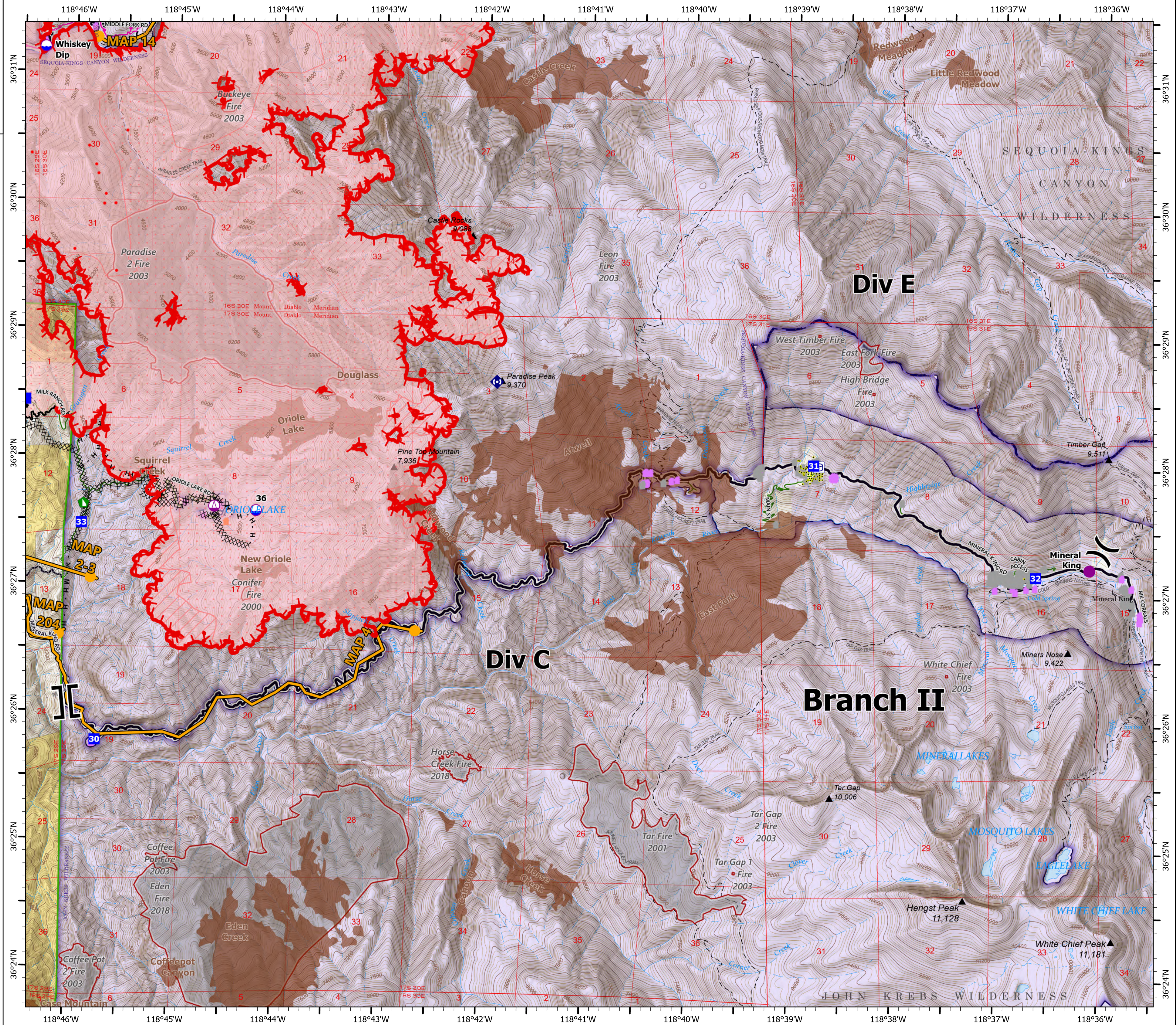
KNP Complex  
CA-KNP-000122

9/28/2021

48,344 acres at 09/28/2021 0115 hrs



- Dip Site
- Helispot
- Sling Site
- Division Break
- Branch Break
- Drop Point
- Dozer Push
- Repeater
- Pump
- Water Tank
- IR Isolated Heat Source
- Completed Dozer Line
- Completed Hand Line
- Completed Mixed Construction Line
- Planned Dozer Line
- Planned Mixed Construction Line
- Management Action Point
- Fire Edge
- Contained Line
- Wildfire Daily Fire Perimeter
- IR Heat Perimeter
- IR Intense Heat
- IR Scattered Heat
- NPS Boundaries
- Tulare County Address Points (Structures)
- Non-Defensible - Prep and Leave
- Non-Defensible - Rescue Drive-By
- Unknown
- Sequoia Groves
- Trail
- Primary
- Secondary
- Local
- Private
- Bureau of Land Management Lands
- National Park Service Lands
- Salt Creek Powerline
- Jordan Powerline
- NPS Powerline
- Fire History
- NPS Wilderness
- USFS Wilderness



SWITCH AREA  
INCIDENT MANAGEMENT TEAM 2

Miles  
0 0.25 0.5 1

Kilometers  
0 0.25 0.5 1

# OPERATIONS

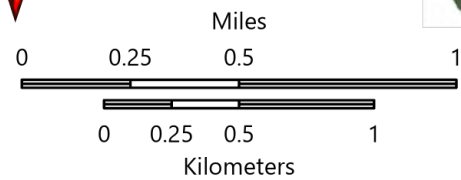
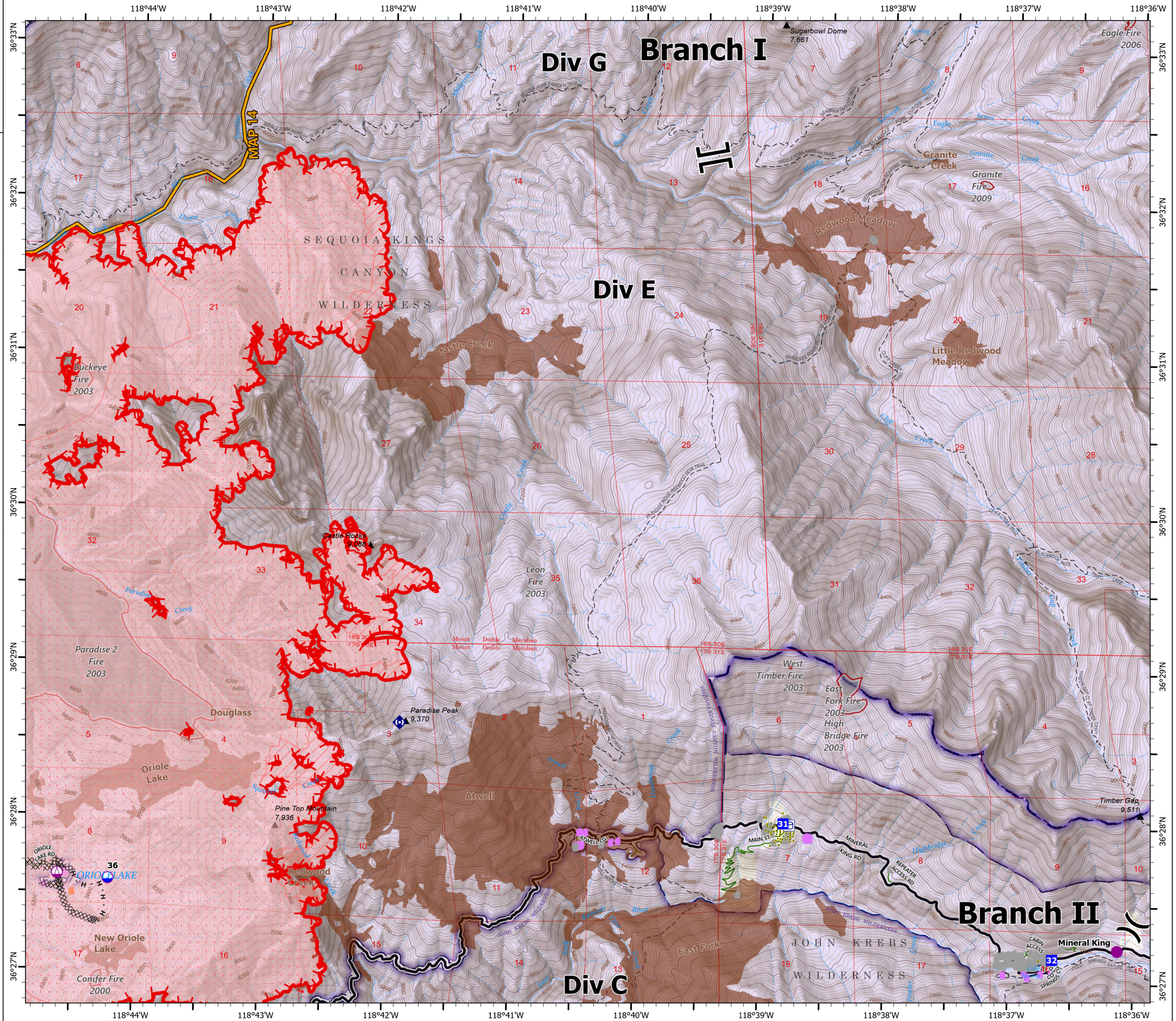
## DIV E

KNP Complex  
CA-KNP-000122  
9/28/2021

48,344 acres at 09/28/2021 0115 hrs



- Dip Site
- Helispot
- Sling Site
- Division Break
- Branch Break
- Drop Point
- Repeater
- Pump
- Water Tank
- IR Isolated Heat Source
- Completed Dozer Line
- Completed Hand Line
- Management Action Point
- Fire Edge
- Wildfire Daily Fire Perimeter
- IR Heat Perimeter
- IR Intense Heat
- IR Scattered Heat
- NPS Boundaries
- Tulare County Address Points (Structures)
- Non-Defensible - Prep and Leave
- Non-Defensible - Rescue Drive-By
- Unknown
- Sequoia Groves
- Trail
- Secondary
- Local
- Private
- National Park Service Lands
- Salt Creek Powerline
- Jordan Powerline
- NPS Powerline
- Fire History
- NPS Wilderness
- USFS Wilderness



1:28,000 - SWAINT2 GIS - 9/28/2021 0410

North American 1983 Datum, LatLong Grid

# OPERATIONS

## DIV G

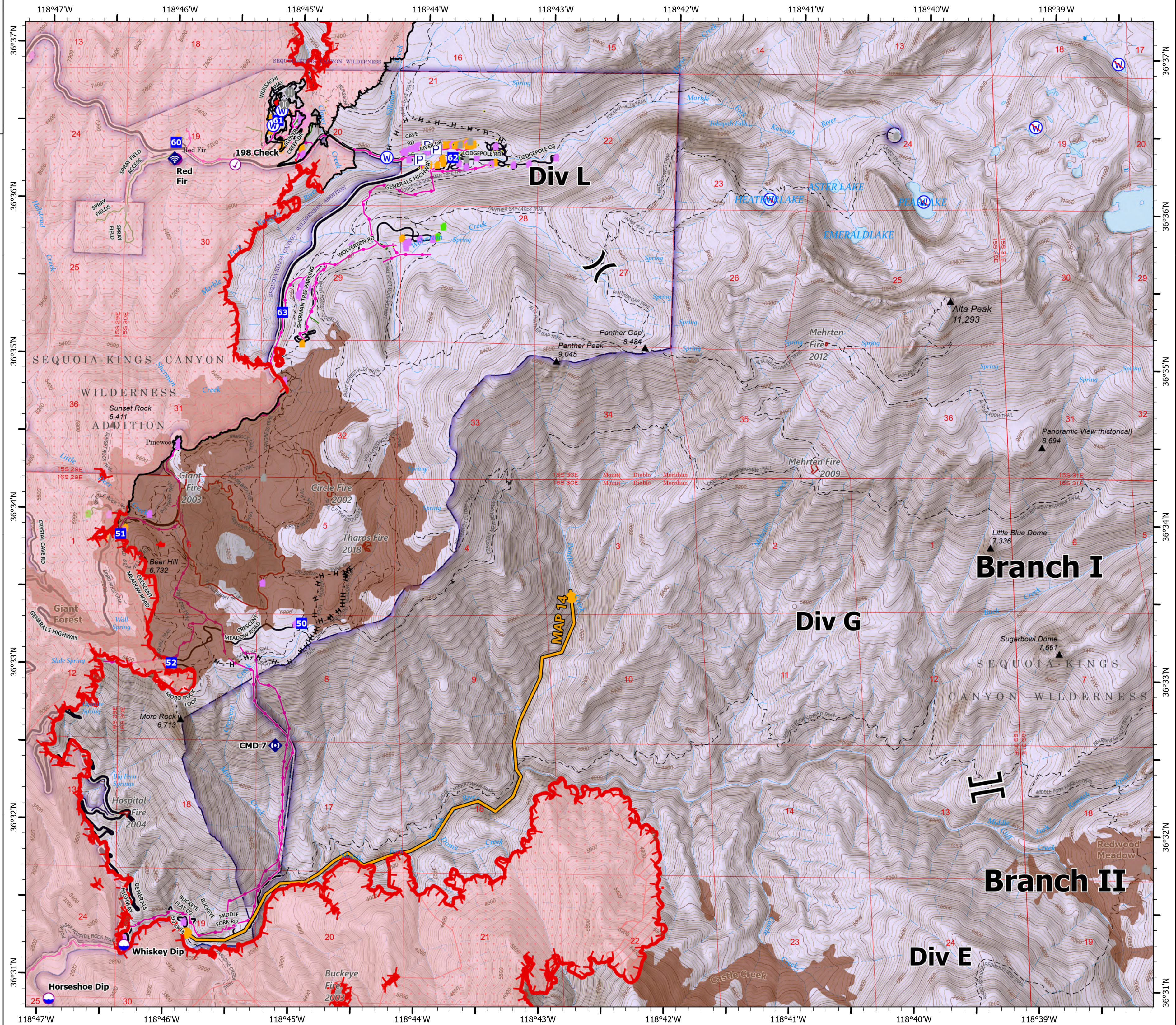
KNP Complex  
CA-KNP-000122

9/28/2021

48,344 acres at 09/28/2021 0115 hrs



- Check Point
- Dip Site
- Helipoint
- ⌋ Division Break
- ⌋ Branch Break
- Drop Point
- ⌋ Bridge
- ⌋ Internet Access
- ⌋ Repeater
- ⌋ Water Source
- ⌋ Restricted Water Source
- ⌋ Pump
- IR Isolated Heat Source
- Completed Hand Line
- Management Action Point
- Fire Edge
- Contained Line
- Wildfire Daily Fire Perimeter
- IR Heat Perimeter
- IR Intense Heat
- IR Scattered Heat
- NPS Boundaries
- Tulare County Address Points (Structures)
- Defensible - Stand Alone
- Defensible - Prep and Hold
- Non-Defensible - Prep and Leave
- Unknown
- Sequoia Groves
- Trail
- Primary
- Local
- Private
- National Park Service Lands
- Salt Creek Powerline
- Jordan Powerline
- NPS Powerline
- Fire History
- NPS Wilderness
- USFS Wilderness



0 0.25 0.5 1 Miles  
0 0.25 0.5 1 Kilometers

1:28,000 - SWAINT2 GIS - 9/28/2021 0411  
North American 1983 Datum, LatLong Grid

# OPERATIONS

## DIV L

KNP Complex  
CA-KNP-000122

9/28/2021

48,344 acres at 09/28/2021 0115 hrs

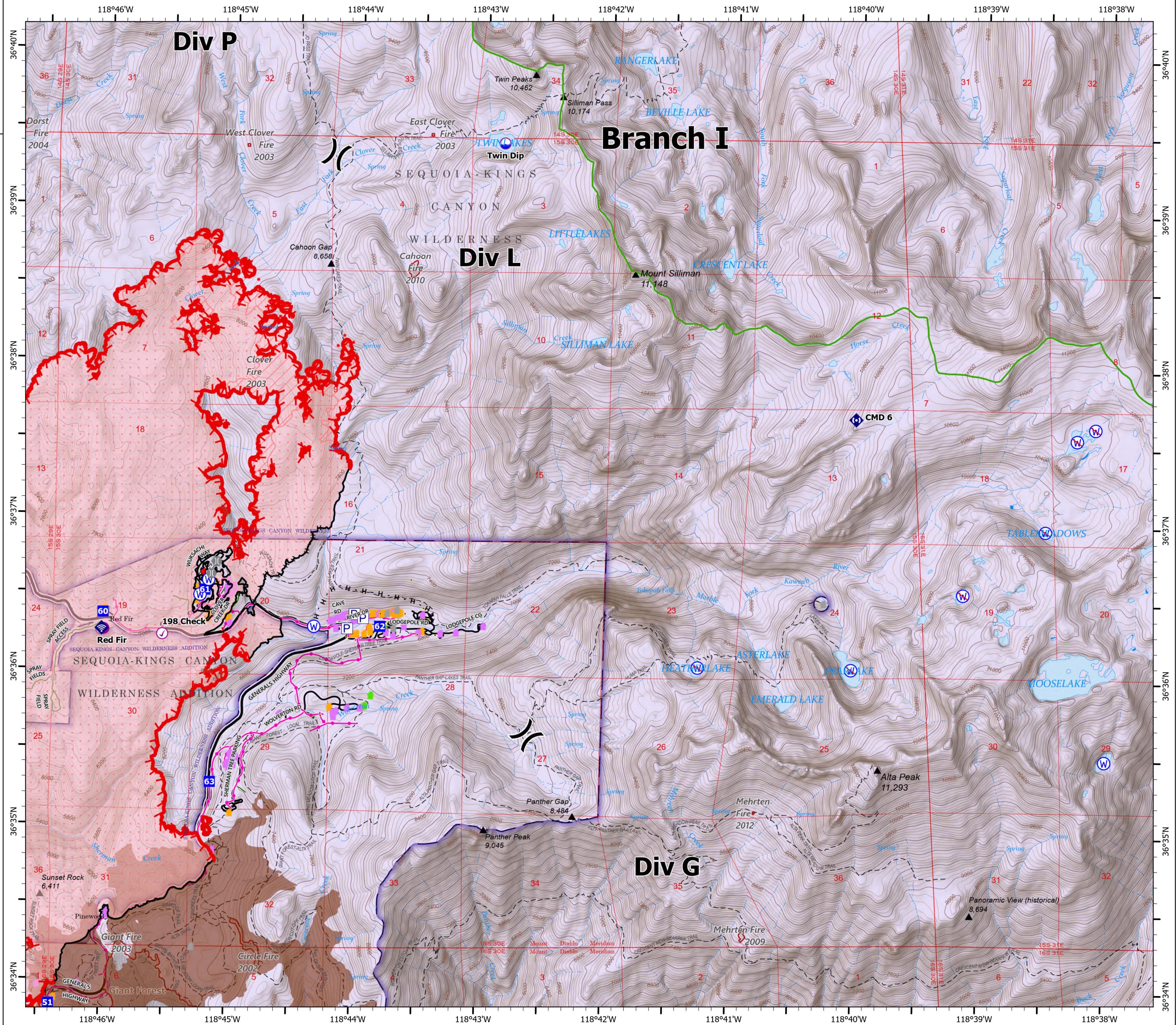
- Check Point
- Dip Site
- Helispot
- ⌋ Division Break
- Drop Point
- ⌋ Bridge
- ◆ Internet Access
- ◆ Repeater
- ⊕ Water Source
- ⊕ Restricted Water Source
- ⊕ Pump
- IR Isolated Heat Source
- Completed Hand Line
- ▬ Fire Edge
- ▬ Contained Line
- ▬ Wildfire Daily Fire Perimeter
- ▬ IR Heat Perimeter
- ▬ IR Intense Heat
- ▬ IR Scattered Heat
- ▬ NPS Boundaries
- Tulare County Address Points (Structures)
- Defensible - Stand Alone
- Defensible - Prep and Hold
- Non-Defensible - Prep and Leave
- Unknown
- Sequoia Groves
- Trail
- ▬ Primary
- ▬ Local
- ▬ Private
- ▬ National Park Service Lands
- ▬ Salt Creek Powerline
- ▬ Jordan Powerline
- ▬ NPS Powerline
- ▬ Fire History
- ▬ NPS Wilderness
- ▬ USFS Wilderness



SWATH AREA  
INCIDENT MANAGEMENT TEAM

0 0.25 0.5 1 Miles  
0 0.25 0.5 1 Kilometers

1:28,000 - SWAIMT2 GIS - 9/28/2021 0412  
North American 1983 Datum, LatLong Grid



# OPERATIONS

## DIV P

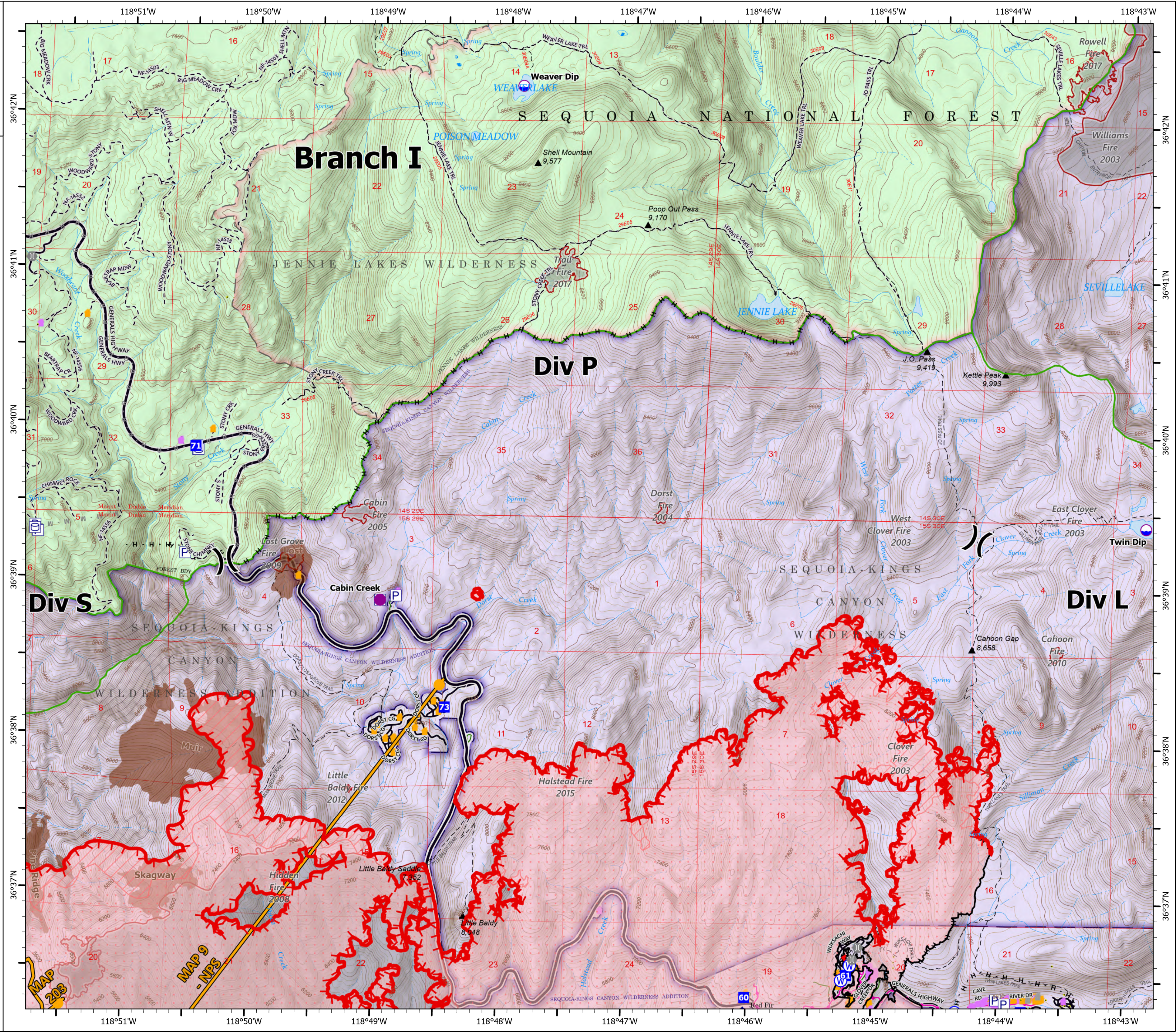
KNP Complex  
CA-KNP-000122

9/28/2021

48,344 acres at 09/28/2021 0115 hrs



- Check Point
- Dip Site
- Helispot
- ) Division Break
- Drop Point
- Bridge
- ◆ Internet Access
- ⊙ Water Source
- ⊙ Pump
- ⊙ Water Tank
- IR Isolated Heat Source
- H - Completed Hand Line
- M - Planned Mixed Construction Line
- R - Planned Road as Line
- Management Action Point
- ▭ Fire Edge
- ▭ Contained Line
- ▭ Wildfire Daily Fire Perimeter
- ▭ IR Heat Perimeter
- ▭ IR Intense Heat
- ▭ IR Scattered Heat
- ▭ NPS Boundaries
- Tulare County Address Points (Structures)
- Defensible - Stand Alone
- Defensible - Prep and Hold
- Non-Defensible - Prep and Leave
- Unknown
- Sequoia Groves
- Trail
- Primary
- Local
- Private
- Forest Service Land
- National Park Service Lands
- Salt Creek Powerline
- Jordan Powerline
- NPS Powerline
- ▭ Fire History
- ▭ NPS Wilderness
- ▭ USFS Wilderness



1:28,000 - SWAINT2 GIS - 9/28/2021 0413  
North American 1983 Datum, LatLong Grid

# OPERATIONS

## DIV S

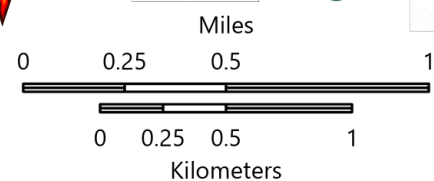
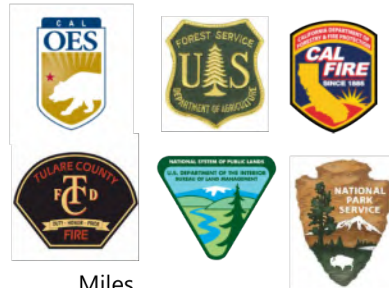
KNP Complex  
CA-KNP-000122

9/28/2021

48,344 acres at 09/28/2021 0115 hrs

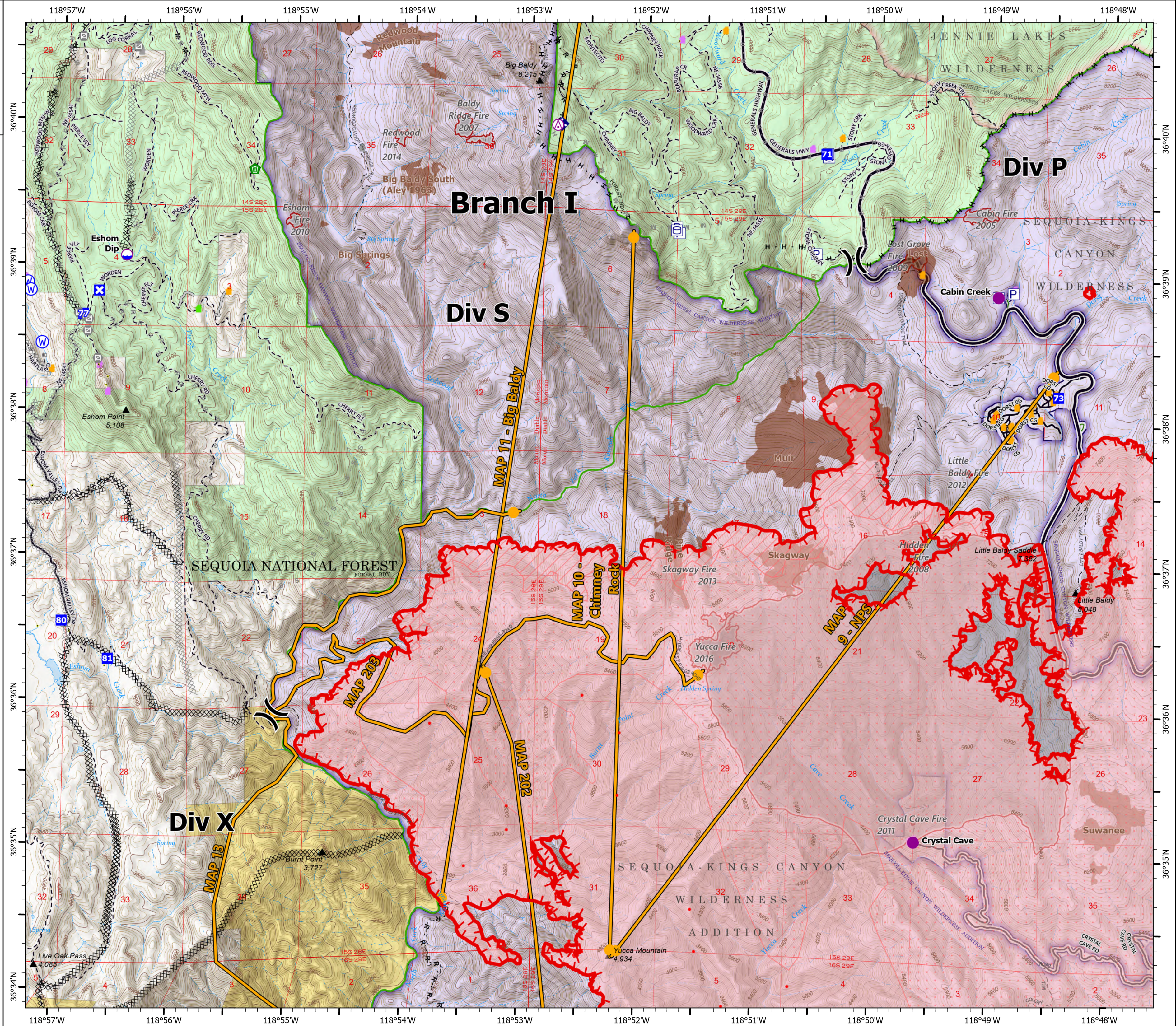


- Aerial Hazard
- Dip Site
- Helispot
- Division Break
- Drop Point
- Closure
- Value at Risk
- Gate
- Clean Up Area
- Mobile Weather Unit
- Water Source
- Pump
- Water Tank
- IR Isolated Heat Source
- Completed Dozer Line
- Completed Hand Line
- Completed Mixed Construction Line
- Completed Road as Line
- Planned Dozer Line
- Planned Hand Line
- Planned Mixed Construction Line
- Planned Road as Line
- Planned Secondary Line
- Access or Improved Road
- Management Action Point
- Fire Edge
- Wildfire Daily Fire Perimeter
- IR Heat Perimeter
- IR Intense Heat
- IR Scattered Heat
- NPS Boundaries
- Tulare County Address Points (Structures)
- Defensible - Stand Alone
- Defensible - Prep and Hold
- Non-Defensible - Prep and Leave
- Unknown
- Sequoia Groves
- Trail
- Primary
- Local
- Private
- Forest Service Land
- Bureau of Land Management Lands
- National Park Service Lands
- Salt Creek Powerline
- Jordan Powerline
- NPS Powerline
- Fire History
- NPS Wilderness
- USFS Wilderness



1:30,000 - SWAINT2 GIS - 9/28/2021 0414

North American 1983 Datum, LatLong Grid



# OPERATIONS

## DIV X

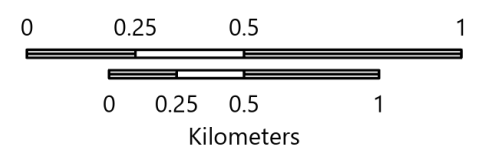
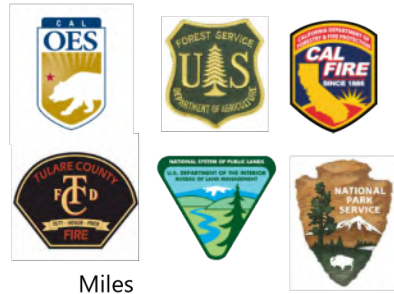
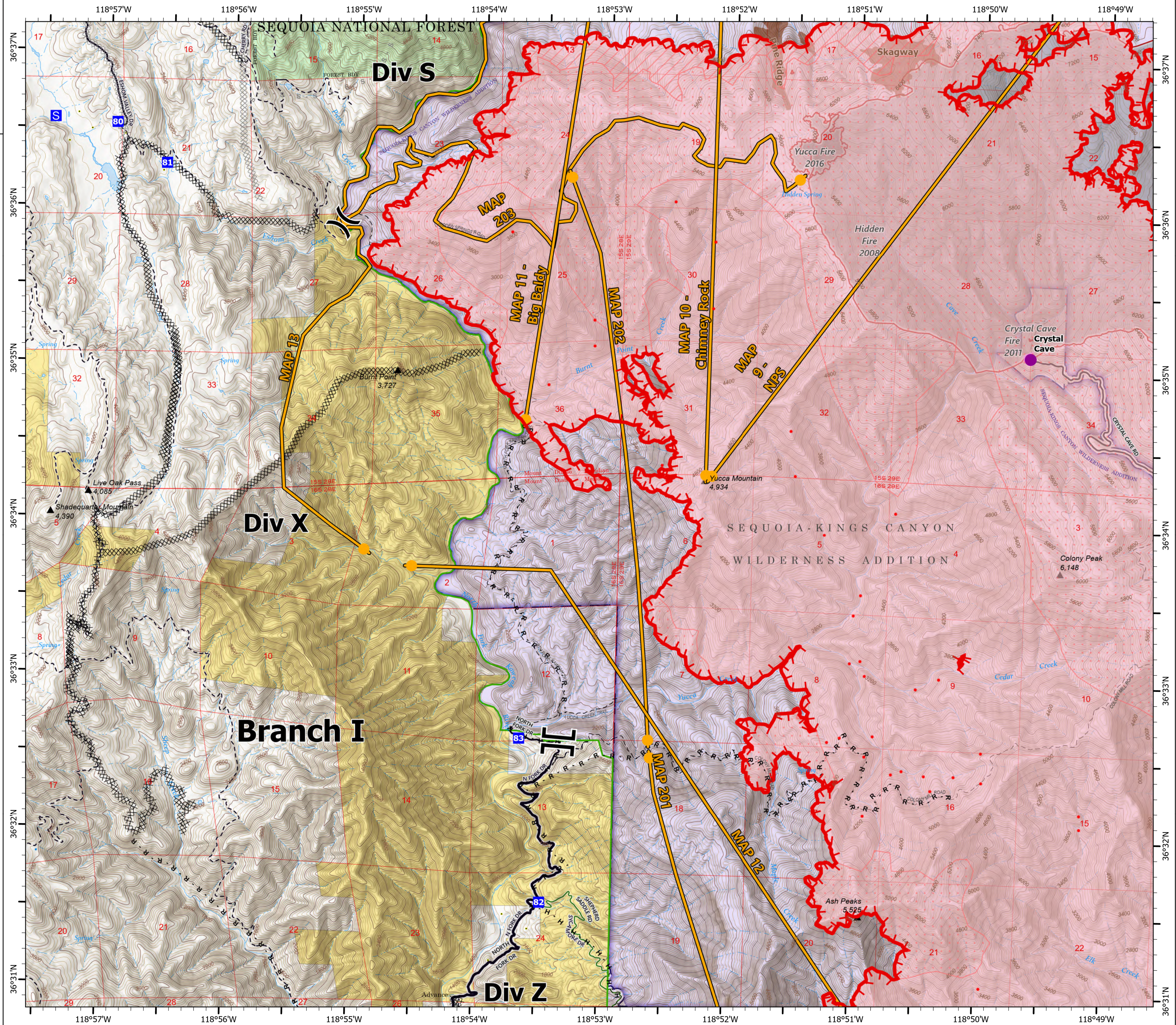
KNP Complex  
CA-KNP-000122

9/28/2021

48,344 acres at 09/28/2021 0115 hrs



- Heliprot
- ⌋ Division Break
- ⌋ Branch Break
- Drop Point
- Staging Area
- IR Isolated Heat Source
- ⊗ Completed Dozer Line
- Completed Hand Line
- Completed Road as Line
- ⊗ Planned Dozer Line
- Planned Secondary Line
- Management Action Point
- ▭ Fire Edge
- ▭ Wildfire Daily Fire Perimeter
- ▭ IR Heat Perimeter
- ▭ IR Intense Heat
- ▭ IR Scattered Heat
- ▭ NPS Boundaries
- Tulare County Address Points (Structures)
- Non-Defensible - Prep and Leave
- Sequoia Groves
- Trail
- Primary
- Secondary
- Local
- Private
- Forest Service Land
- Bureau of Land Management Lands
- National Park Service Lands
- Private; Local Government; Undesignated
- Salt Creek Powerline
- Jordan Powerline
- NPS Powerline
- ▭ Fire History
- ▭ NPS Wilderness
- ▭ USFS Wilderness



1:28,000 - SWAINT2 GIS - 9/28/2021 0415

North American 1983 Datum, LatLong Grid



# OPERATIONS

## DIV Z

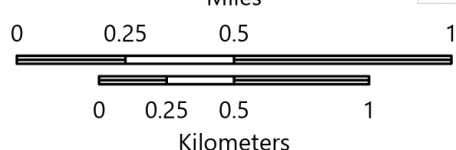
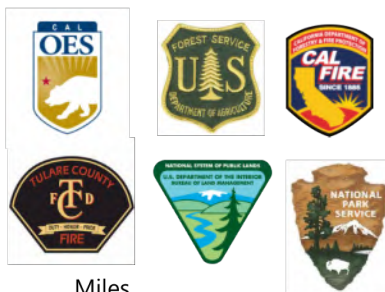
KNP Complex  
CA-KNP-000122

9/28/2021

48,344 acres at 09/28/2021 0115 hrs



- Dip Site
- Mobile Retardant Base
- Helibase
- Sling Site
- Division Break
- Branch Break
- Drop Point
- Camp
- Landmark
- Gate
- Water Development or Draft Site
- Fence - Cut/Damaged
- Repeater
- Safety Zone
- Hazard
- Water Source
- Pump
- Water Tank
- IR Isolated Heat Source
- Completed Dozer Line
- Completed Hand Line
- Completed Road as Line
- Planned Dozer Line
- Planned Hand Line
- Planned Mixed Construction Line
- Planned Road as Line
- Planned Secondary Line
- Access or Improved Road
- Management Action Point
- Fire Edge
- Contained Line
- Wildfire Daily Fire Perimeter
- IR Heat Perimeter
- IR Scattered Heat
- NPS Boundaries
- Tulare County Address Points (Structures)
- Defensible - Stand Alone
- Defensible - Prep and Hold
- Non-Defensible - Prep and Leave
- Unknown
- Trail
- Primary
- Secondary
- Local
- Private
- Bureau of Land Management Lands
- National Park Service Lands
- Salt Creek Powerline
- Jordan Powerline
- NPS Powerline
- Fire History
- NPS Wilderness
- USFS Wilderness



1:28,000 - SWAINT2 GIS - 9/28/2021 0416

North American 1983 Datum, LatLong Grid

