

OPERATIONS

DIV A

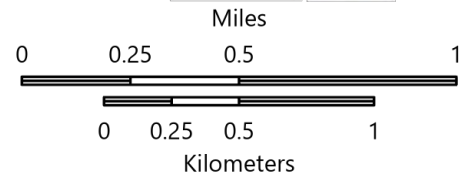
KNP Complex
CA-KNP-000122

9/29/2021

48,872 acres at 09/29/2021 0130 hrs

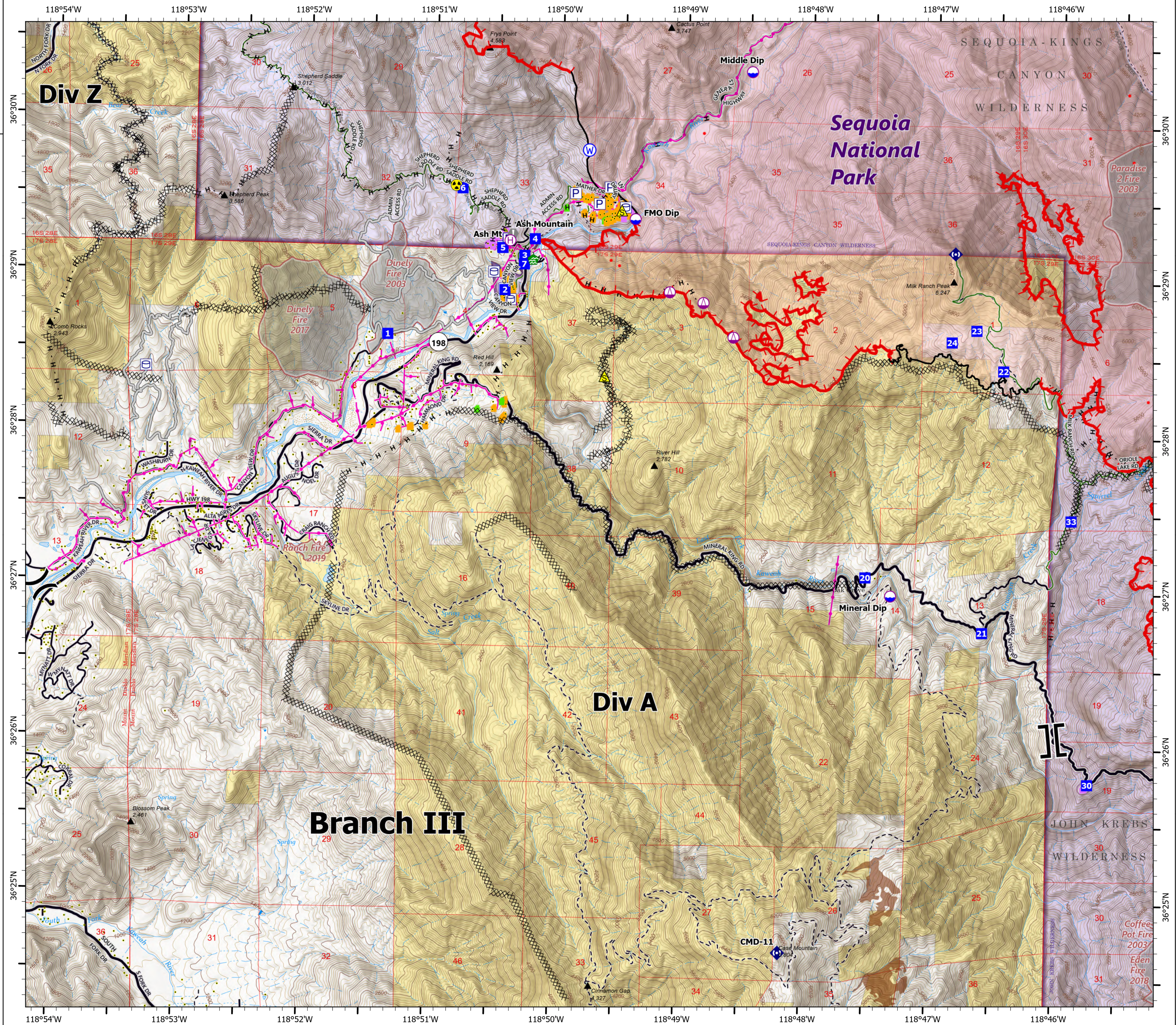


- Dip Site
- Helibase
- Sling Site
- Division Break
- Branch Break
- Drop Point
- Value at Risk
- Water Development or Draft Site
- Repeater
- Safety Zone
- Hazard
- Water Source
- Pump
- Water Tank
- IR Isolated Heat Source
- Possible IR Heat Source
- Completed Dozer Line
- Completed Hand Line
- Access or Improved Road
- Fire Edge
- Contained Line
- Wildfire Daily Fire Perimeter
- IR Heat Perimeter
- IR Intense Heat
- IR Scattered Heat
- Tulare County Address Points (Structures)
- Defensible - Stand Alone
- Defensible - Prep and Hold
- Non-Defensible - Prep and Leave
- Unknown
- Sequoia Groves
- Trail
- Primary
- Secondary
- Local
- Private
- Bureau of Land Management Lands
- National Park Service Lands
- Private; Local Government; Undesignated
- Salt Creek Powerline
- Jordan Powerline
- NPS Powerline
- Fire History
- USFS Wilderness
- NPS Wilderness
- USFS Boundary
- NPS Unit Boundary



1:28,000 - SWAIMT2 GIS - 9/29/2021 0403

North American 1983 Datum, LatLong Grid



OPERATIONS

DIV C

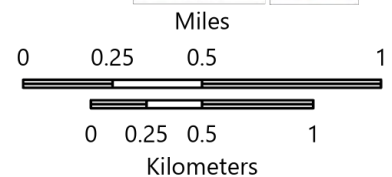
KNP Complex
CA-KNP-000122

9/29/2021

48,872 acres at 09/29/2021 0130 hrs

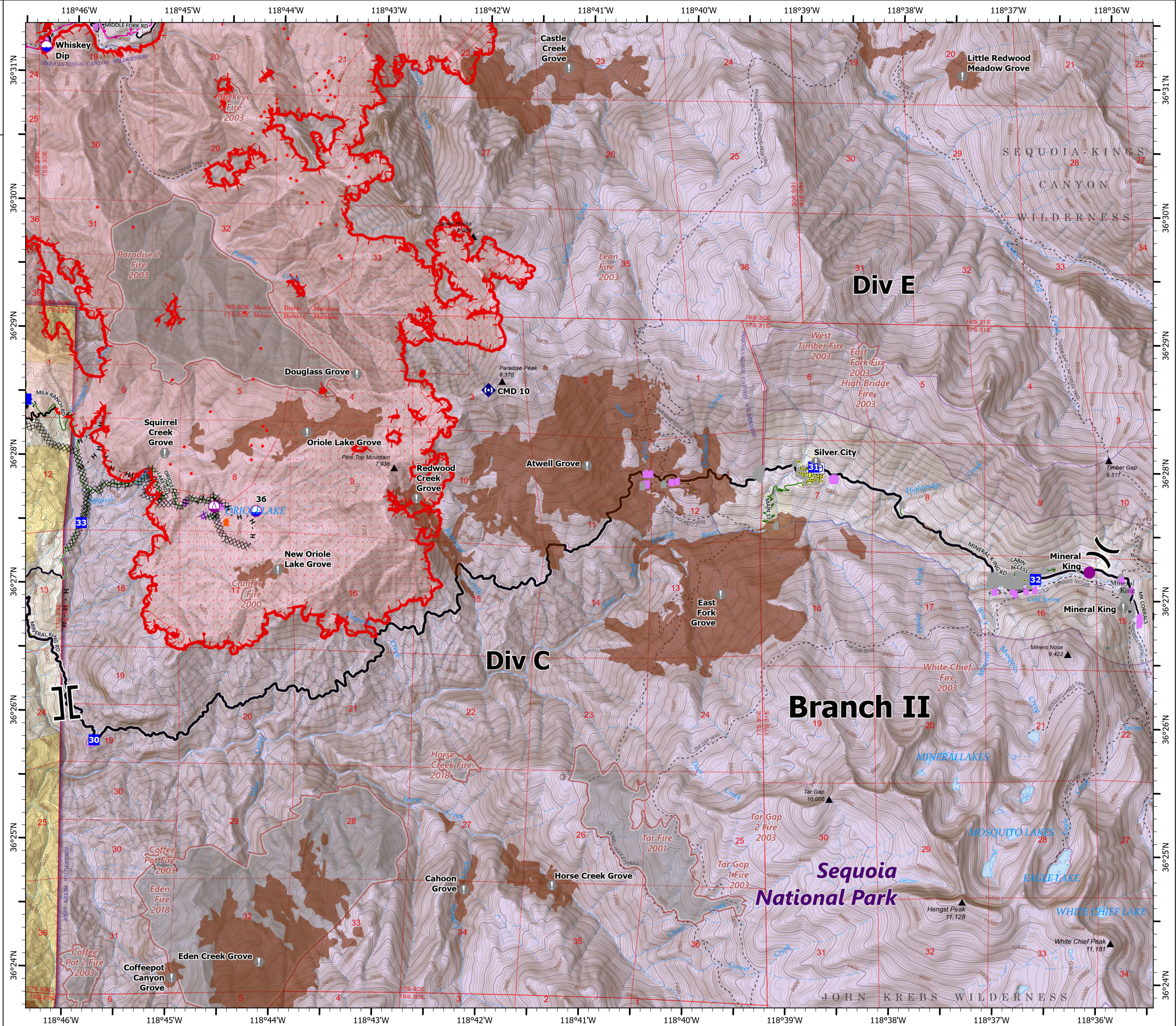


- Dip Site
- Helispot
- Sling Site
- Division Break
- Branch Break
- Drop Point
- Value at Risk
- Repeater
- Pump
- Water Tank
- IR Isolated Heat Source
- Completed Dozer Line
- Completed Hand Line
- Fire Edge
- Contained Line
- Wildfire Daily Fire Perimeter
- IR Heat Perimeter
- IR Intense Heat
- IR Scattered Heat
- Tulare County Address Points (Structures)
- Non-Defensible - Prep and Leave
- Non-Defensible - Rescue Drive-By
- Unknown
- Sequoia Groves
- Trail
- Primary
- Secondary
- Local
- Private
- Bureau of Land Management Lands
- National Park Service Lands
- Salt Creek Powerline
- Jordan Powerline
- NPS Powerline
- Fire History
- USFS Wilderness
- NPS Wilderness
- USFS Boundary
- NPS Unit Boundary



1:34,000 - SWAIMT2 GIS - 9/29/2021 0404

North American 1983 Datum, LatLong Grid



OPERATIONS

DIV E

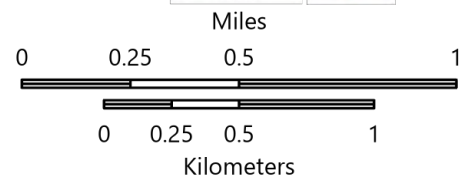
KNP Complex
CA-KNP-000122

9/29/2021

48,872 acres at 09/29/2021 0130 hrs

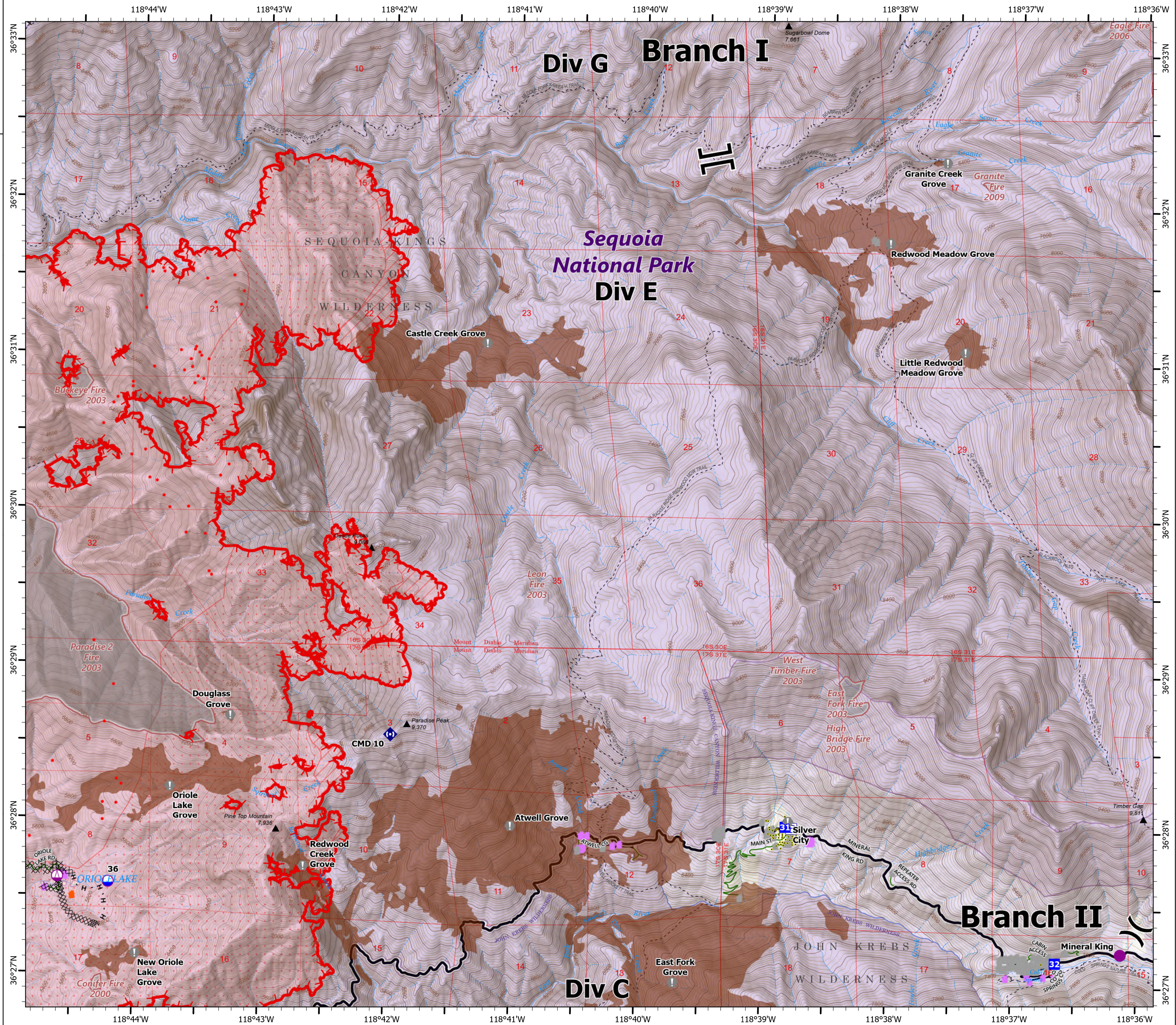


- Dip Site
- Helispot
- Sling Site
- Division Break
- Branch Break
- Drop Point
- Value at Risk
- Repeater
- Pump
- Water Tank
- IR Isolated Heat Source
- Completed Dozer Line
- Completed Hand Line
- Fire Edge
- Wildfire Daily Fire Perimeter
- IR Heat Perimeter
- IR Intense Heat
- IR Scattered Heat
- Tulare County Address Points (Structures)
- Non-Defensible - Prep and Leave
- Non-Defensible - Rescue Drive-By
- Unknown
- Sequoia Groves
- Trail
- Secondary
- Local
- Private
- National Park Service Lands
- Salt Creek Powerline
- Jordan Powerline
- NPS Powerline
- Fire History
- USFS Wilderness
- NPS Wilderness
- USFS Boundary
- NPS Unit Boundary



1:28,000 - SWAIMT2 GIS - 9/29/2021 0405

North American 1983 Datum, LatLong Grid



OPERATIONS

DIV G

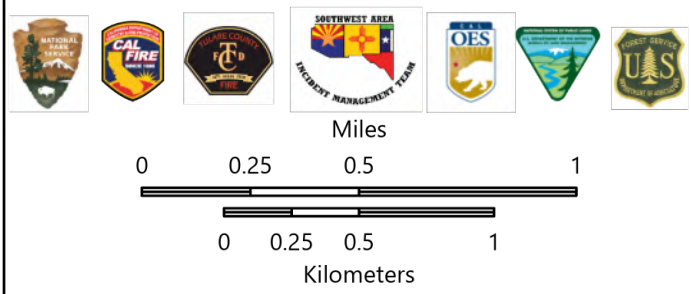
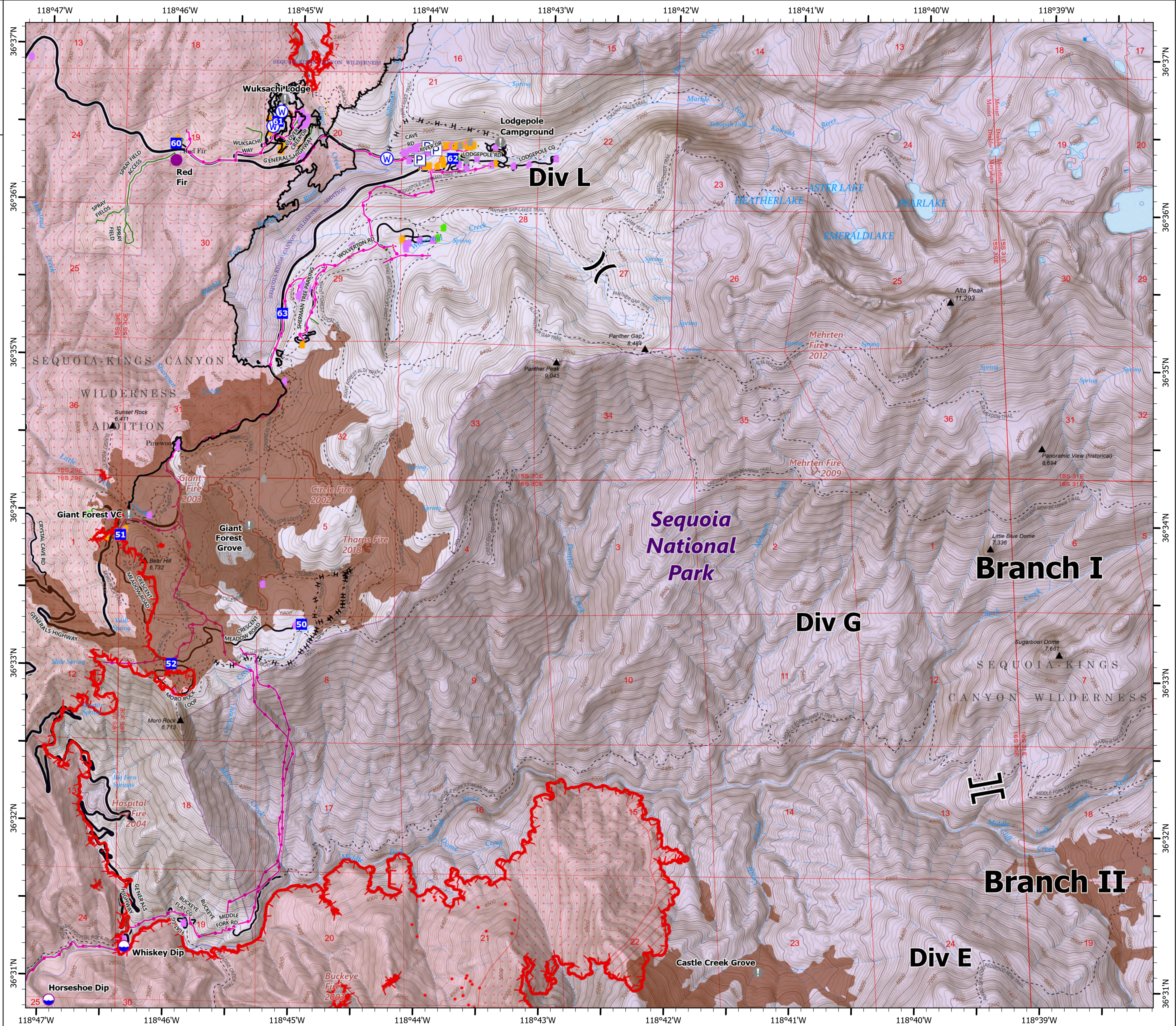
KNP Complex
CA-KNP-000122

9/29/2021

48,872 acres at 09/29/2021 0130 hrs



- Dip Site
- Helispot
- Division Break
- Branch Break
- Drop Point
- Value at Risk
- Water Source
- Pump
- IR Isolated Heat Source
- Completed Hand Line
- Fire Edge
- Contained Line
- Wildfire Daily Fire Perimeter
- IR Heat Perimeter
- IR Intense Heat
- IR Scattered Heat
- Tulare County Address Points (Structures)
- Defensible - Stand Alone
- Defensible - Prep and Hold
- Non-Defensible - Prep and Leave
- Unknown
- Sequoia Groves
- Trail
- Primary
- Local
- Private
- National Park Service Lands
- Salt Creek Powerline
- Jordan Powerline
- NPS Powerline
- Fire History
- USFS Wilderness
- NPS Wilderness
- USFS Boundary
- NPS Unit Boundary



1:28,000 - SWAIMT2 GIS - 9/29/2021 0407

North American 1983 Datum, LatLong Grid

OPERATIONS

DIV L

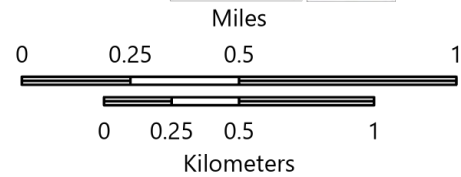
KNP Complex
CA-KNP-000122

9/29/2021

48,872 acres at 09/29/2021 0130 hrs

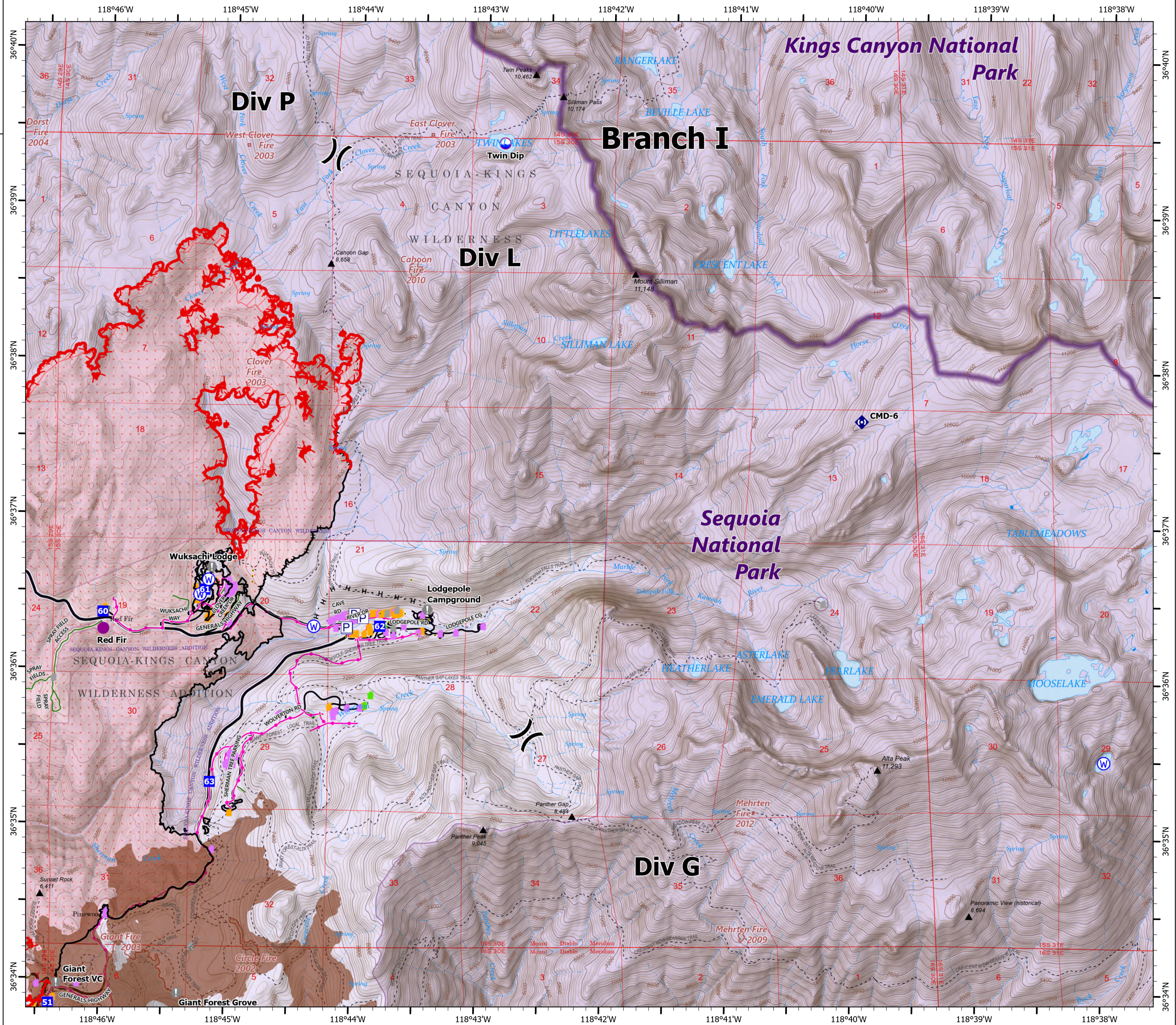


- Dip Site
- Helispot
- Division Break
- Drop Point
- Value at Risk
- Repeater
- Water Source
- Pump
- IR Isolated Heat Source
- Completed Hand Line
- Fire Edge
- Contained Line
- Wildfire Daily Fire Perimeter
- IR Heat Perimeter
- IR Intense Heat
- IR Scattered Heat
- Tulare County Address Points (Structures)
- Defensible - Stand Alone
- Defensible - Prep and Hold
- Non-Defensible - Prep and Leave
- Unknown
- Sequoia Groves
- Trail
- Primary
- Local
- Private
- National Park Service Lands
- Salt Creek Powerline
- Jordan Powerline
- NPS Powerline
- Fire History
- USFS Wilderness
- NPS Wilderness
- USFS Boundary
- NPS Unit Boundary



1:28,000 - SWAINT2 GIS - 9/29/2021 0408

North American 1983 Datum, LatLong Grid



OPERATIONS

DIV P

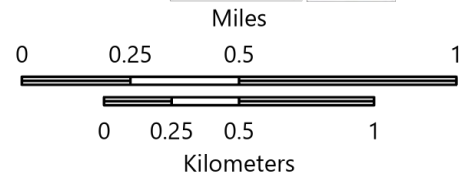
KNP Complex
CA-KNP-000122

9/29/2021

48,872 acres at 09/29/2021 0130 hrs

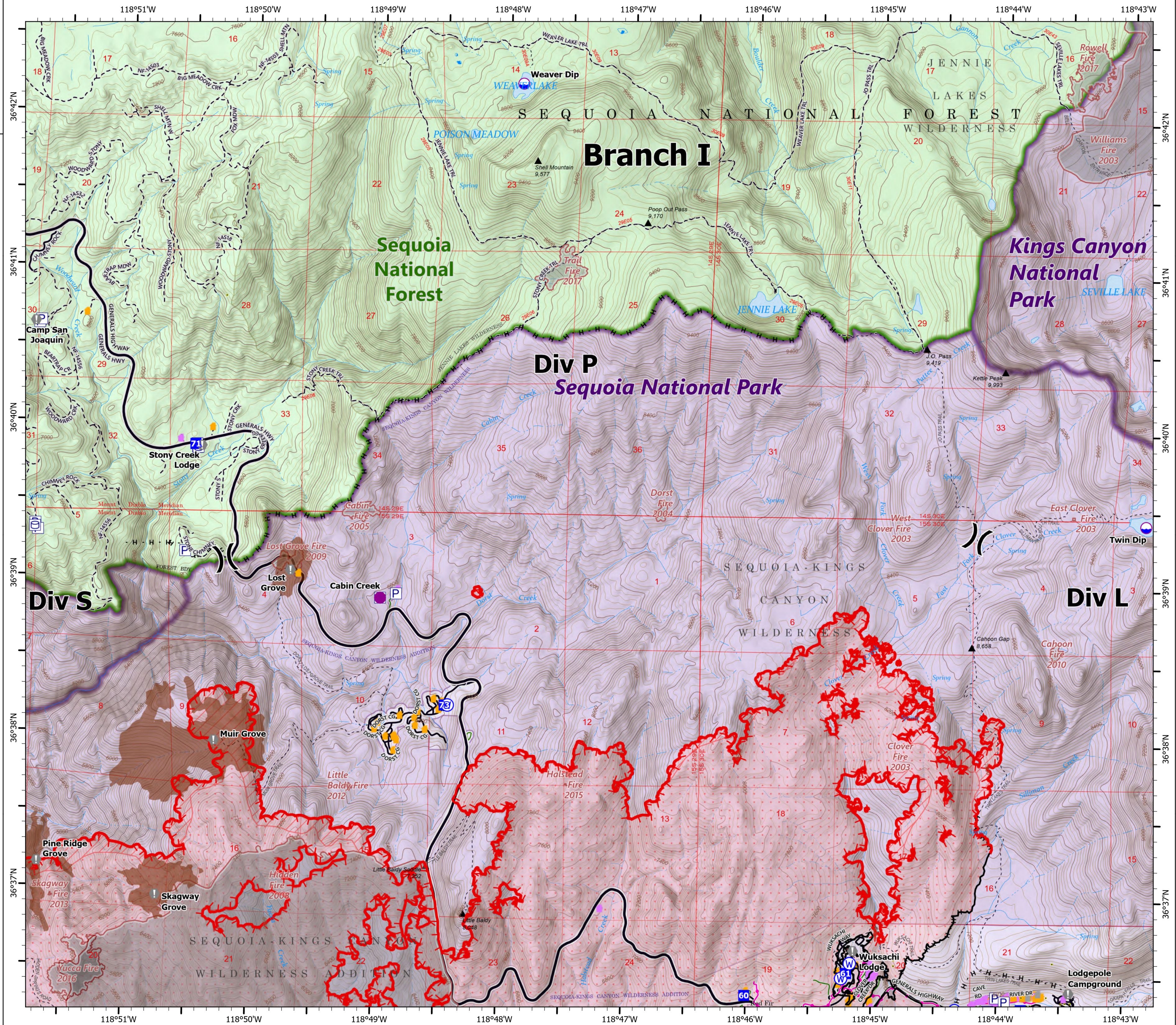


- Dip Site
- Helispot
- Division Break
- Drop Point
- Value at Risk
- Water Source
- Pump
- Water Tank
- IR Isolated Heat Source
- Completed Hand Line
- Fire Edge
- Contained Line
- Wildfire Daily Fire Perimeter
- IR Heat Perimeter
- IR Intense Heat
- IR Scattered Heat
- Tulare County Address Points (Structures)
- Defensible - Stand Alone
- Defensible - Prep and Hold
- Non-Defensible - Prep and Leave
- Unknown
- Sequoia Groves
- Trail
- Primary
- Local
- Private
- Forest Service Land
- National Park Service Lands
- Salt Creek Powerline
- Jordan Powerline
- NPS Powerline
- Fire History
- USFS Wilderness
- NPS Wilderness
- USFS Boundary
- NPS Unit Boundary



1:28,000 - SWAIMT2 GIS - 9/29/2021 0408

North American 1983 Datum, Lat/Long Grid



OPERATIONS

DIV S

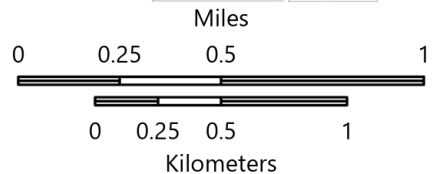
KNP Complex
CA-KNP-000122

9/29/2021

48,872 acres at 09/29/2021 0130 hrs

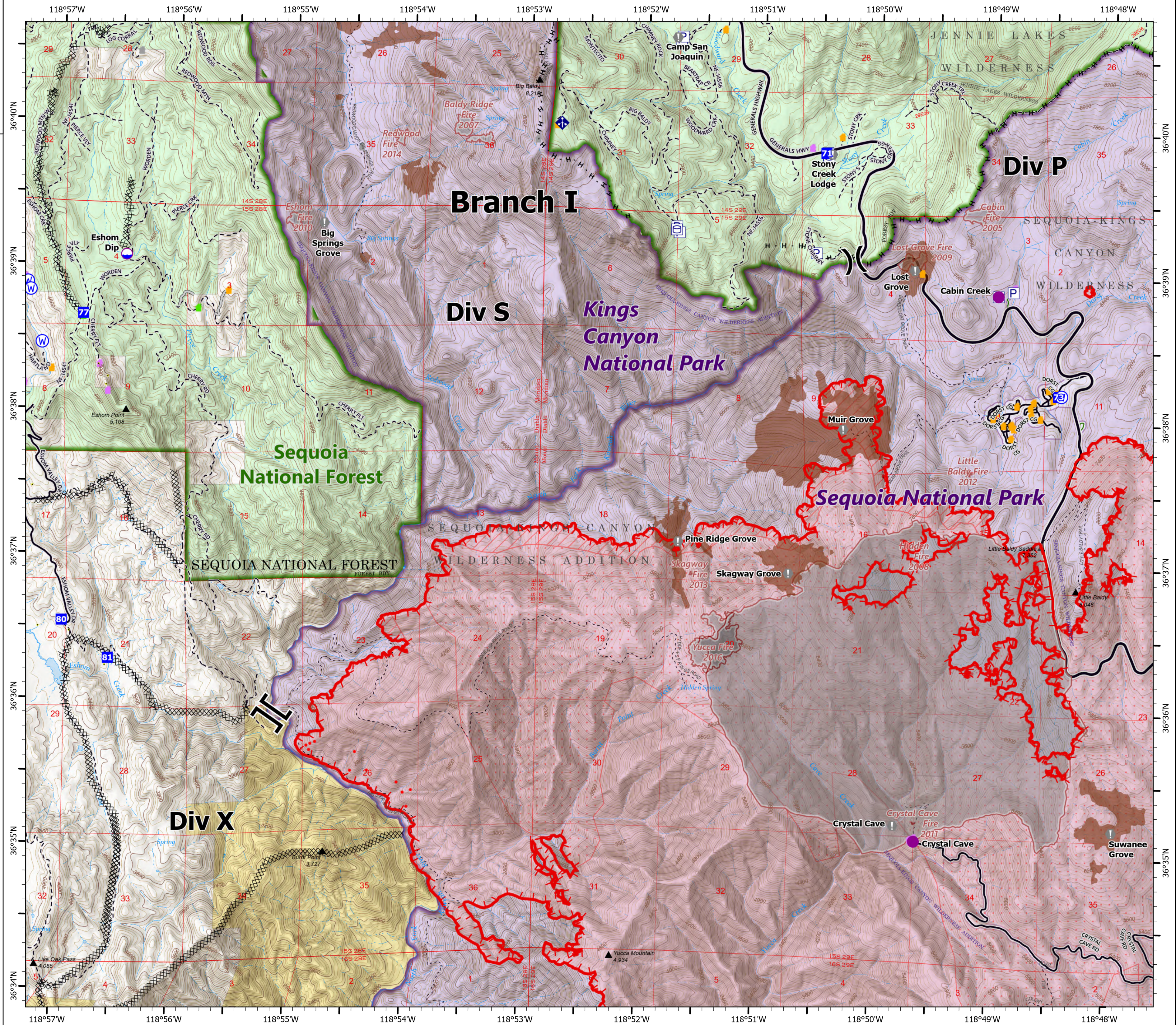


- Dip Site
- Helispot
- Division Break
- Branch Break
- Drop Point
- Value at Risk
- Mobile Weather Unit
- Water Source
- Pump
- Water Tank
- IR Isolated Heat Source
- Completed Dozer Line
- Completed Hand Line
- Access or Improved Road
- Fire Edge
- Wildfire Daily Fire Perimeter
- IR Heat Perimeter
- IR Intense Heat
- IR Scattered Heat
- Tulare County Address Points (Structures)
- Defensible - Stand Alone
- Defensible - Prep and Hold
- Non-Defensible - Prep and Leave
- Unknown
- Sequoia Groves
- Trail
- Trail
- Primary
- Local
- Private
- Forest Service Land
- Bureau of Land Management Lands
- National Park Service Lands
- Salt Creek Powerline
- Jordan Powerline
- NPS Powerline
- Fire History
- USFS Wilderness
- NPS Wilderness
- USFS Boundary
- NPS Unit Boundary



1:30,000 - SWAIMT2 GIS - 9/29/2021 0410

North American 1983 Datum, LatLong Grid



OPERATIONS

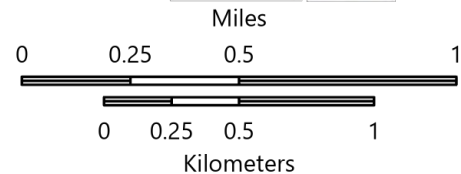
DIV X

KNP Complex
CA-KNP-000122
9/29/2021

48,872 acres at 09/29/2021 0130 hrs

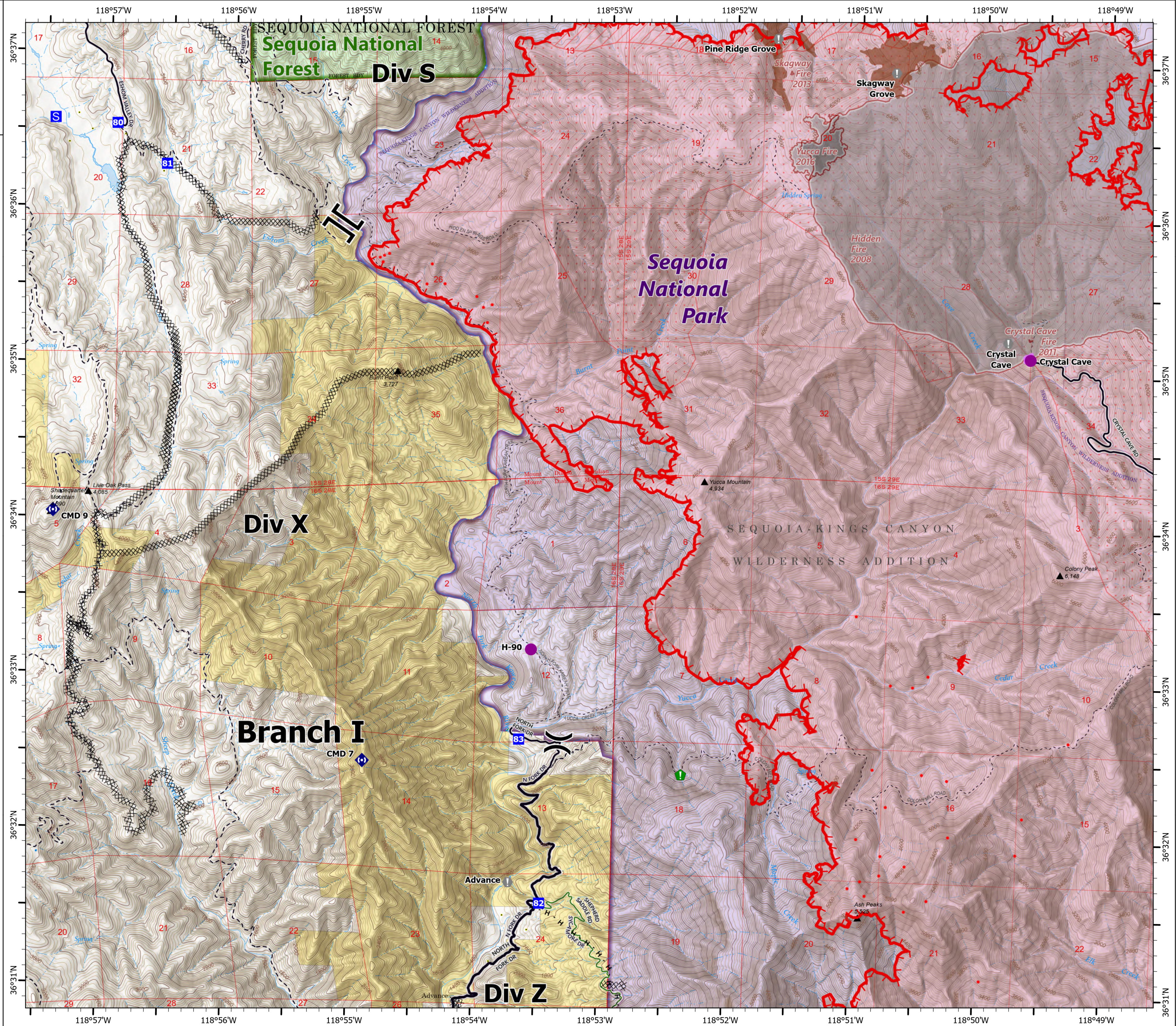


- Helispot
- ⌋ Division Break
- ⌋ Branch Break
- Drop Point
- Staging Area
- Value at Risk
- Resource Location
- Repeater
- IR Isolated Heat Source
- ⊗ Completed Dozer Line
- H Completed Hand Line
- ▭ Fire Edge
- ▭ Wildfire Daily Fire Perimeter
- ▭ IR Heat Perimeter
- ▭ IR Intense Heat
- ▭ IR Scattered Heat
- Tulare County Address Points (Structures)
- Non-Defensible - Prep and Leave
- Sequoia Groves
- Trail
- Primary
- Secondary
- Local
- Private
- Forest Service Land
- Bureau of Land Management Lands
- National Park Service Lands
- Private; Local Government; Undesignated
- Salt Creek Powerline
- Jordan Powerline
- NPS Powerline
- Fire History
- USFS Wilderness
- NPS Wilderness
- USFS Boundary
- NPS Unit Boundary



1:28,000 - SWAIMT2 GIS - 9/29/2021 0411

North American 1983 Datum, LatLong Grid



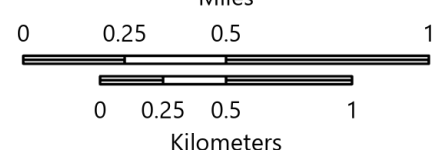
OPERATIONS

DIV Z

KNP Complex
CA-KNP-000122
9/29/2021
48,872 acres at 09/29/2021 0130 hrs



- Dip Site
- Helibase
- Sling Site
- Division Break
- Branch Break
- Drop Point
- Value at Risk
- Water Development or Draft Site
- Resource Location
- Repeater
- Safety Zone
- Hazard
- Water Source
- Pump
- Water Tank
- IR Isolated Heat Source
- Possible IR Heat Source
- Completed Dozer Line
- Completed Hand Line
- Access or Improved Road
- Fire Edge
- Contained Line
- Wildfire Daily Fire Perimeter
- IR Heat Perimeter
- IR Scattered Heat
- Tulare County Address Points (Structures)
- Defensible - Stand Alone
- Defensible - Prep and Hold
- Non-Defensible - Prep and Leave
- Unknown
- Trail
- Primary
- Secondary
- Local
- Private
- Bureau of Land Management Lands
- National Park Service Lands
- Salt Creek Powerline
- Jordan Powerline
- NPS Powerline
- Fire History
- USFS Wilderness
- NPS Wilderness
- USFS Boundary
- NPS Unit Boundary



1:30,000 - SWAINT2 GIS - 9/29/2021 0412
North American 1983 Datum, LatLong Grid

