

OPERATIONS

DIV A

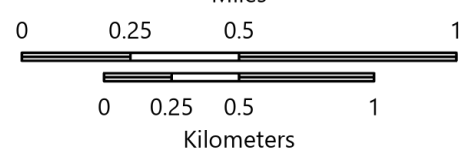
KNP Complex
CA-KNP-000122

10/1/2021

51,596 acres at 10/01/2021 0115 hrs

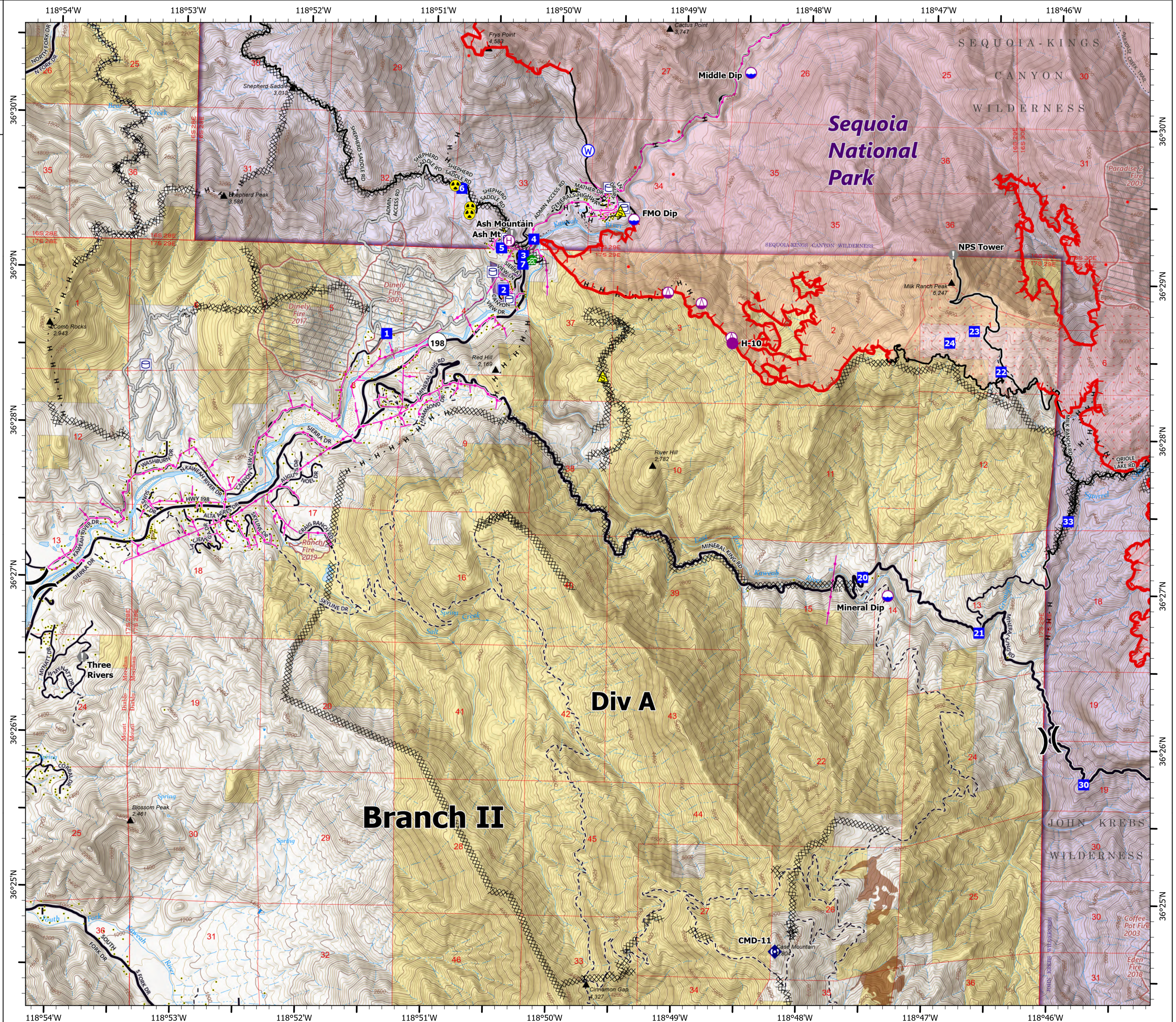


- Dip Site
- Helispot
- Helibase
- Sling Site
- Division Break
- Drop Point
- Value at Risk
- Water Development or Draft Site
- Repeater
- Safety Zone
- Hazard
- Water Source
- Water Tank
- IR Isolated Heat Source
- Completed Dozer Line
- Access or Hand Road
- Fire Edge
- Contained Line
- Wildfire Daily Fire Perimeter
- IR Heat Perimeter
- IR Intense Heat
- IR Scattered Heat
- Tulare County Address Points (Structures)
- Sequoia Groves
- Bureau of Land Management Lands
- National Park Service Lands
- Private; Local Government; Undesignated
- USFS Wilderness
- NPS Wilderness
- USFS Boundary
- NPS Unit Boundary
- Fire History
- Powerline
- Major Road
- Minor Road
- Private Road
- Major Road
- Minor Road
- Unpaved Road
- Trail



1:28,000 - SWAIMT2 GIS - 10/1/2021 0402

North American 1983 Datum. LatLong Grid



OPERATIONS

DIV C

KNP Complex
CA-KNP-000122

10/1/2021

51,596 acres at 10/01/2021 0115 hrs



- Dip Site
- Helispot
- Sling Site
- Division Break
- Drop Point
- Value at Risk
- Repeater
- Water Tank
- IR Isolated Heat Source
- Completed Dozer Line
- Completed Hand Line
- Fire Edge
- Contained Line
- Wildfire Daily Fire Perimeter
- IR Heat Perimeter
- IR Intense Heat
- IR Scattered Heat
- Tulare County Address Points (Structures)
- Sequoia Groves
- Bureau of Land Management Lands
- National Park Service Lands
- USFS Wilderness
- NPS Wilderness
- USFS Boundary
- NPS Unit Boundary
- Fire History
- Powerline
- Major Road
- Minor Road
- Private Road
- Unpaved Road
- Trail

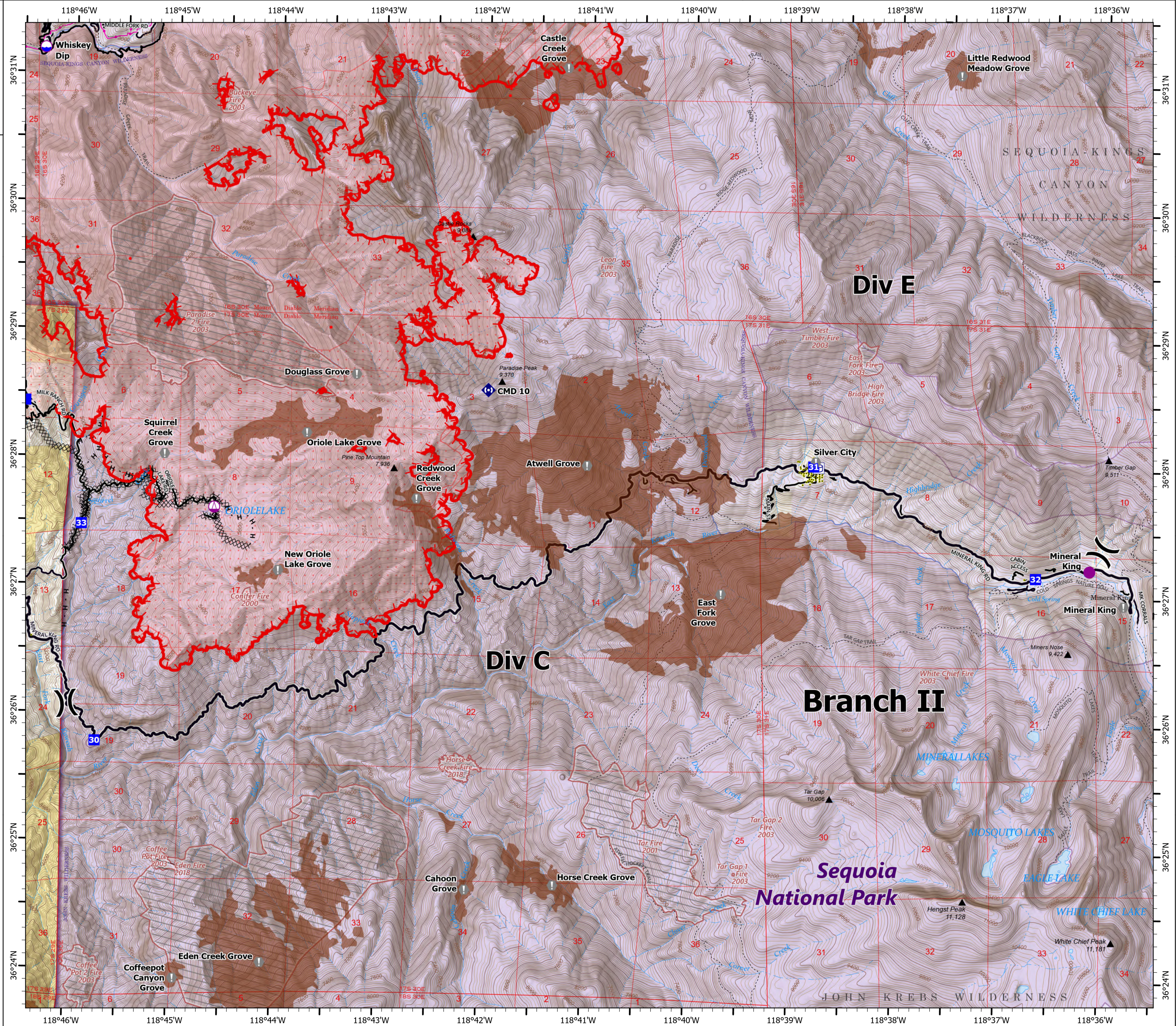


0 0.25 0.5 1
Miles

0 0.25 0.5 1
Kilometers

1:34,000 - SWAIMT2 GIS - 10/1/2021 0403

North American 1983 Datum, LatLong Grid



OPERATIONS

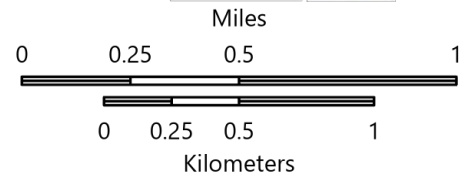
DIV E

KNP Complex
CA-KNP-000122
10/1/2021

51,596 acres at 10/01/2021 0115 hrs

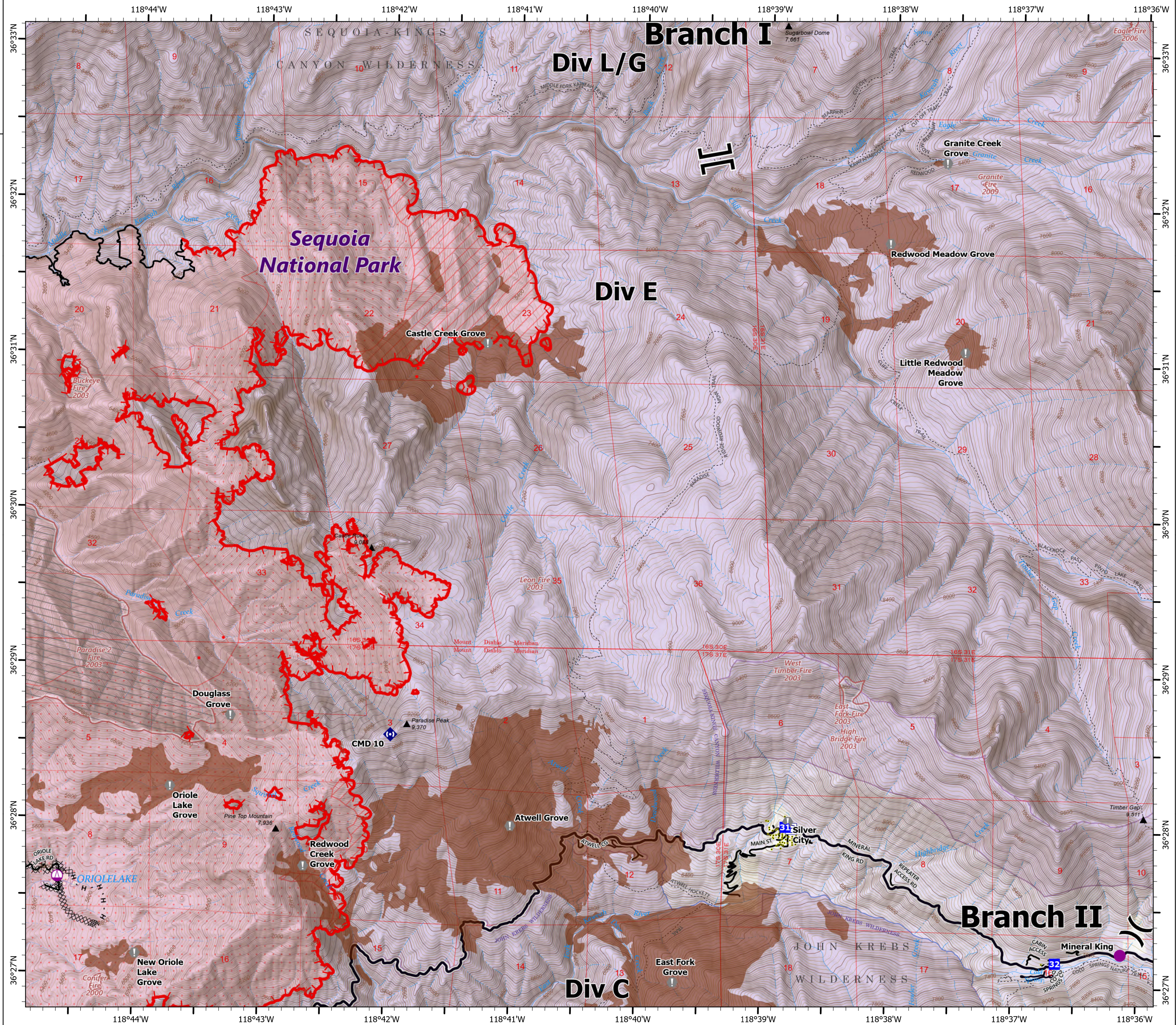


- Helispot
- Sling Site
- ⌋ Division Break
- ⌋ Branch Break
- Drop Point
- ⚠ Value at Risk
- ⚡ Repeater
- 🛢 Water Tank
- 🔥 IR Isolated Heat Source
- ⊘ Completed Dozer Line
- Completed Hand Line
- ▬ Fire Edge
- ▬ Contained Line
- ▬ Wildfire Daily Fire Perimeter
- ▬ IR Heat Perimeter
- ▬ IR Intense Heat
- ▬ IR Scattered Heat
- Tulare County Address Points (Structures)
- 🌲 Sequoia Groves
- 🌲 National Park Service Lands
- 🌲 USFS Wilderness
- 🌲 NPS Wilderness
- 🌲 USFS Boundary
- 🌲 NPS Unit Boundary
- 📜 Fire History
- ⚡ Powerline
- 🛣 Major Road
- 🛣 Minor Road
- 🛣 Private Road
- ⋯ Trail



1:28,000 - SWAIMT2 GIS - 10/1/2021 0404

North American 1983 Datum, LatLong Grid



OPERATIONS

DIV L/G

KNP Complex

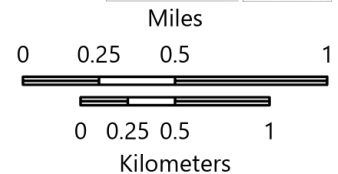
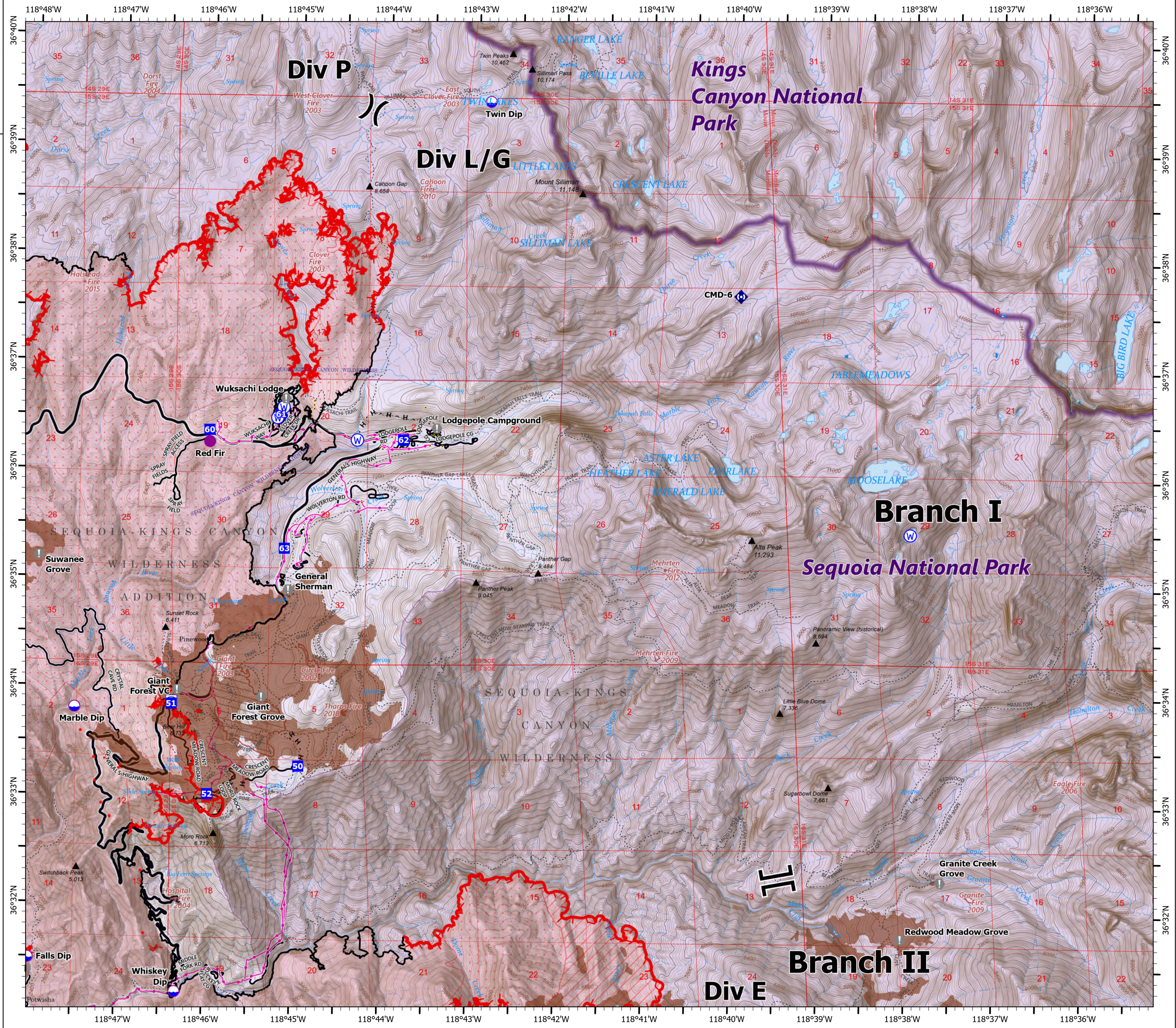
CA-KNP-000122

10/1/2021

51,596 acres at 10/01/2021 0115 hrs



- Dip Site
- Helispot
- Division Break
- Branch Break
- Drop Point
- Value at Risk
- Repeater
- Water Source
- Water Tank
- IR Isolated Heat Source
- Completed Hand Line
- Fire Edge
- Contained Line
- Wildfire Daily Fire Perimeter
- IR Heat Perimeter
- IR Intense Heat
- IR Scattered Heat
- Tulare County Address Points (Structures)
- Sequoia Groves
- National Park Service Lands
- USFS Wilderness
- NPS Wilderness
- USFS Boundary
- NPS Unit Boundary
- Fire History
- Powerline
- Major Road
- Minor Road
- Private Road
- Trail



1:40,000 - SWAIMT2 GIS - 10/1/2021 0406

North American 1983 Datum. LatLong Grid

OPERATIONS

DIV P

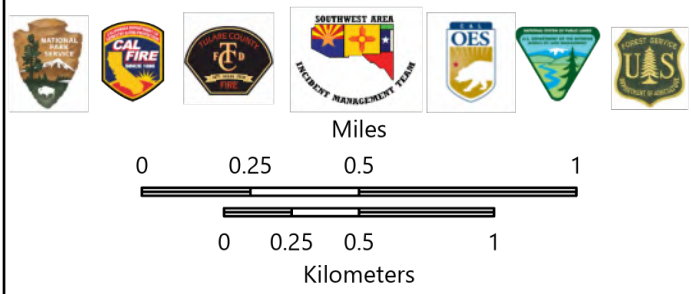
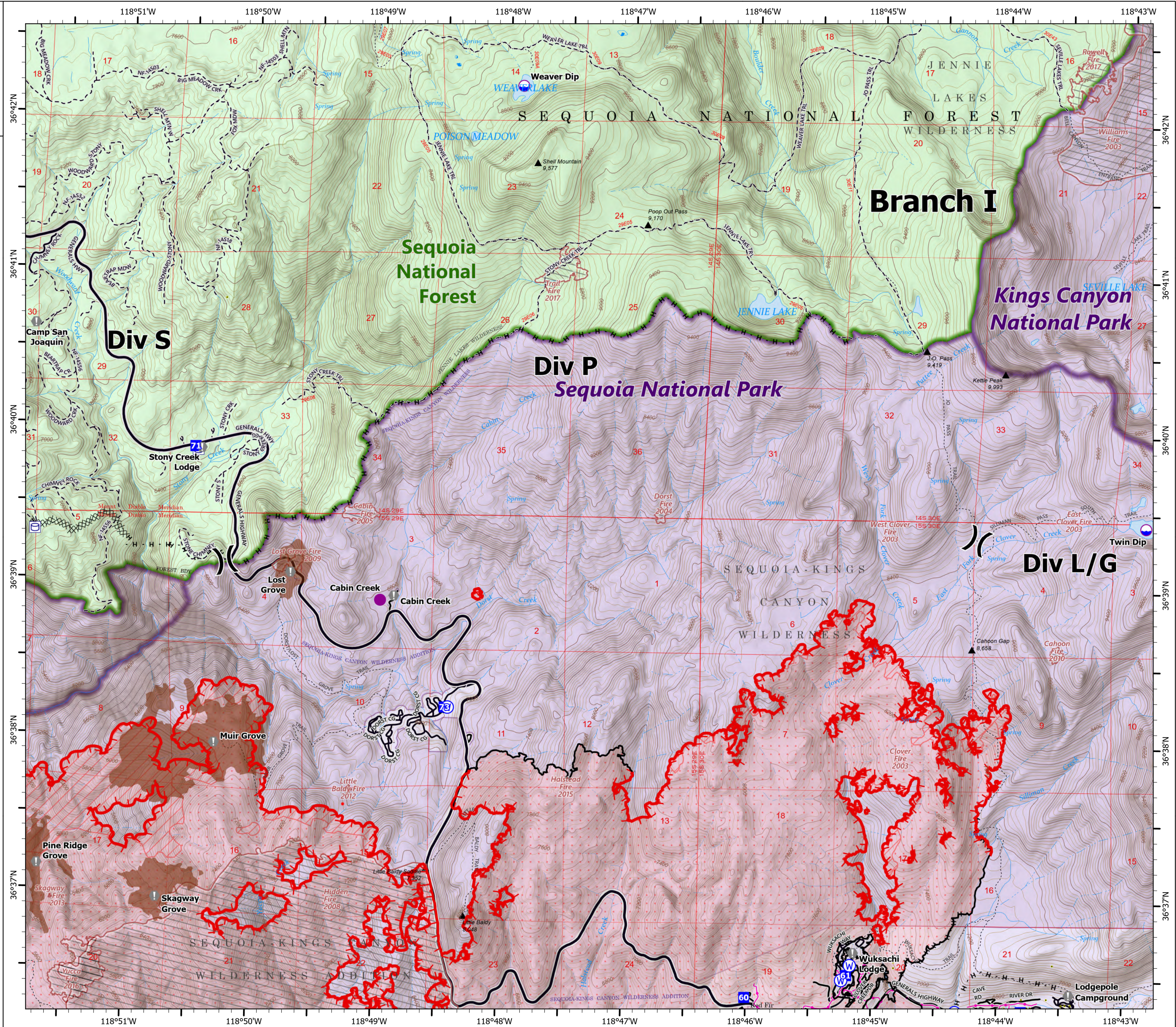
KNP Complex
CA-KNP-000122

10/1/2021

51,596 acres at 10/01/2021 0115 hrs



- Dip Site
- Helispot
- Division Break
- Drop Point
- Value at Risk
- Water Source
- Water Tank
- IR Isolated Heat Source
- Completed Dozer Line
- Completed Hand Line
- Fire Edge
- Contained Line
- Wildfire Daily Fire Perimeter
- IR Heat Perimeter
- IR Intense Heat
- IR Scattered Heat
- Tulare County Address Points (Structures)
- Sequoia Groves
- Forest Service Land
- National Park Service Lands
- USFS Wilderness
- NPS Wilderness
- USFS Boundary
- NPS Unit Boundary
- Fire History
- Powerline
- Major Road
- Minor Road
- Private Road
- Minor Road
- Unpaved Road
- Trail



1:28,000 - SWAIMT2 GIS - 10/1/2021 0407

North American 1983 Datum, LatLong Grid

OPERATIONS

DIV S

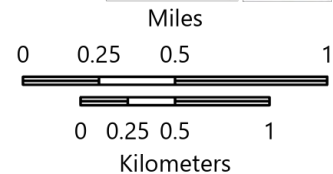
KNP Complex
CA-KNP-000122

10/1/2021

51,596 acres at 10/01/2021 0115 hrs

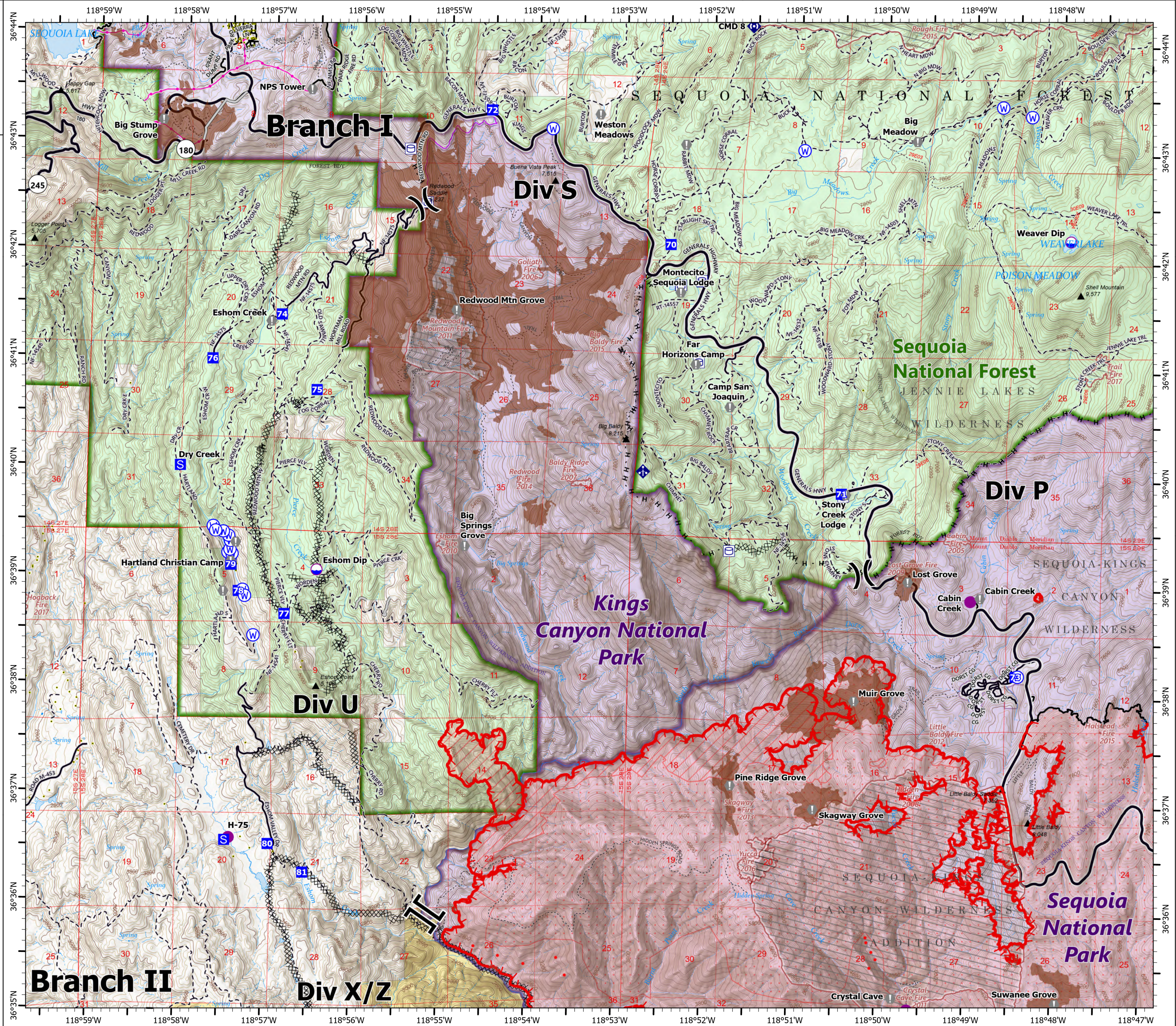


- Dip Site
- Helispot
- Division Break
- Branch Break
- Drop Point
- Staging Area
- Value at Risk
- Mobile Weather Unit
- Repeater
- Water Source
- Water Tank
- IR Isolated Heat Source
- Completed Dozer Line
- Completed Hand Line
- Access or Improved Road
- Fire Edge
- Contained Line
- Wildfire Daily Fire Perimeter
- IR Heat Perimeter
- IR Intense Heat
- IR Scattered Heat
- Tulare County Address Points (Structures)
- Sequoia Groves
- Forest Service Land
- Bureau of Land Management Lands
- National Park Service Lands
- USFS Wilderness
- NPS Wilderness
- USFS Boundary
- NPS Unit Boundary
- Fire History
- Powerline
- Major Road
- Minor Road
- Private Road
- Unknown Road
- Major Road
- Minor Road
- Unpaved Road
- Trail



1:40,000 - SWAIMT2 GIS - 10/1/2021 0408

North American 1983 Datum, LatLong Grid



OPERATIONS

DIV U

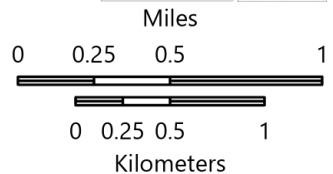
KNP Complex
CA-KNP-000122

10/1/2021

51,596 acres at 10/01/2021 0115 hrs

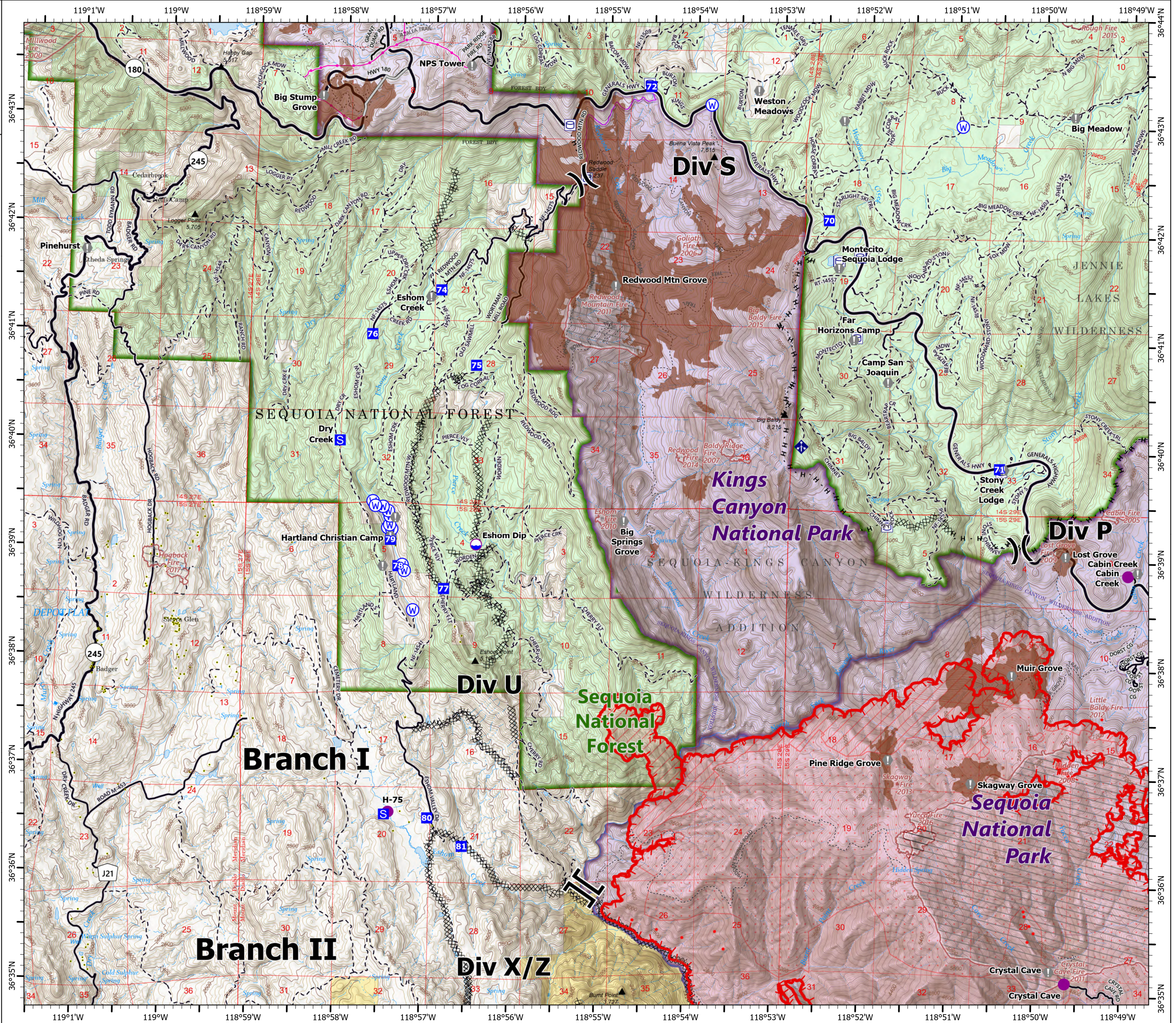


- Dip Site
- Helispot
- Division Break
- Branch Break
- Drop Point
- Staging Area
- Value at Risk
- Mobile Weather Unit
- Repeater
- Water Source
- Water Tank
- IR Isolated Heat Source
- Completed Dozer Line
- Completed Hand Line
- Access or Improved Road
- Fire Edge
- Wildfire Daily Fire Perimeter
- IR Heat Perimeter
- IR Intense Heat
- IR Scattered Heat
- Tulare County Address Points (Structures)
- Sequoia Groves
- Forest Service Land
- Bureau of Land Management Lands
- National Park Service Lands
- USFS Wilderness
- NPS Wilderness
- USFS Boundary
- NPS Unit Boundary
- Fire History
- Powerline
- Major Road
- Minor Road
- Private Road
- Unknown Road
- Major Road
- Minor Road
- Unpaved Road
- Trail



1:40,000 - SWAIMT2 GIS - 10/1/2021 0409

North American 1983 Datum, LatLong Grid



OPERATIONS

DIV X/Z

KNP Complex

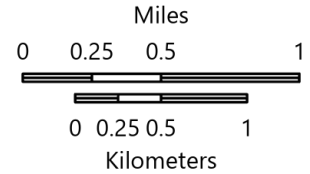
CA-KNP-000122

10/1/2021

51,596 acres at 10/01/2021 0115 hrs



- Dip Site
- Helispot
- Helibase
- Sling Site
- Division Break
- Branch Break
- Drop Point
- Camp
- Staging Area
- Value at Risk
- Water Development or Draft Site
- Resource Location
- Repeater
- Safety Zone
- Hazard
- Water Source
- Water Tank
- IR Isolated Heat Source
- Completed Dozer Line
- Completed Hand Line
- Access or Improved Road
- Fire Edge
- Contained Line
- Wildfire Daily Fire Perimeter
- IR Heat Perimeter
- IR Intense Heat
- IR Scattered Heat
- Tulare County Address Points (Structures)
- Sequoia Groves
- Bureau of Land Management Lands
- National Park Service Lands
- Private; Local Government; Undesignated
- USFS Wilderness
- NPS Wilderness
- USFS Boundary
- NPS Unit Boundary
- Fire History
- Powerline
- Major Road
- Minor Road
- Private Road
- Major Road
- Minor Road
- Unpaved Road
- Trail



1:44,000 - SWAINT2 GIS - 10/1/2021 0411

North American 1983 Datum, LatLong Grid

