

OPERATIONS

DIV A

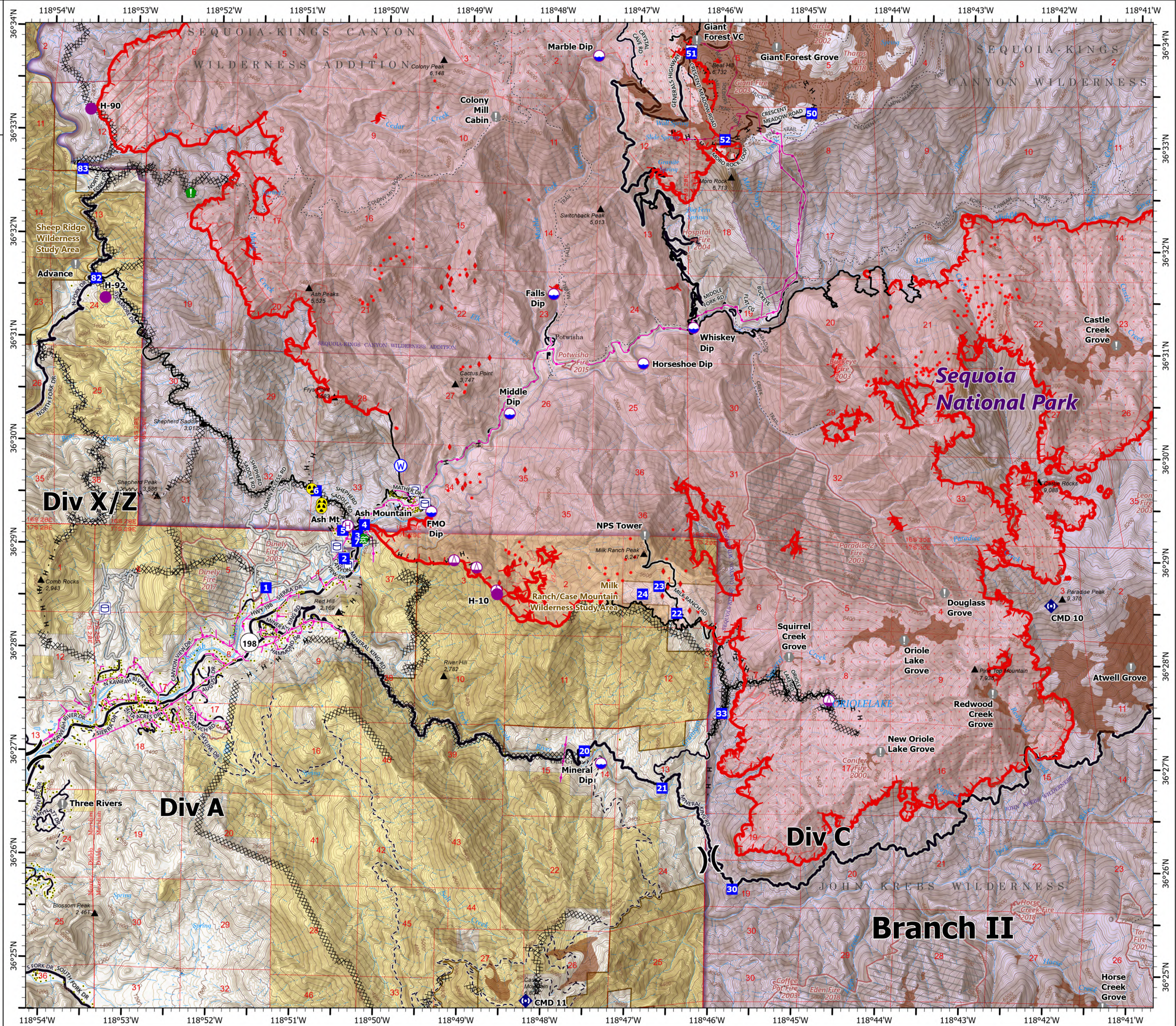
KNP Complex
CA-KNP-000122

10/3/2021

62,761 acres at 10/03/2021 0020 hrs



- Dip Site
- Helispot
- Helibase
- Sling Site
- Division Break
- Drop Point
- Value at Risk
- Water Development or Draft Site
- Resource Location
- Repeater
- Hazard
- Water Source
- Water Tank
- IR Isolated Heat Source
- Possible IR Heat Source
- Completed Dozer Line
- Completed Hand Line
- Access or Improved Road
- Fire Edge
- Contained Line
- Wildfire Daily Fire Perimeter
- IR Heat Perimeter
- IR Intense Heat
- IR Scattered Heat
- Tulare County Address Points (Structures)
- Sequoia Groves
- Bureau of Land Management Lands
- National Park Service Lands
- Private; Local Government; Undesignated
- USFS Wilderness
- NPS Wilderness
- USFS Boundary
- NPS Unit Boundary
- BLM Wilderness Study Area
- Fire History
- Powerline
- Major Road
- Minor Road
- Private Road
- Major Road
- Minor Road
- Unpaved Road
- Unverified Route
- Trail



0 0.25 0.5 1 Miles
0 0.25 0.5 1 Kilometers

1:42,000 - SWAIMT2 GIS - 10/3/2021 0505
North American 1983 Datum. LatLong Grid