

OPERATIONS

DIV E

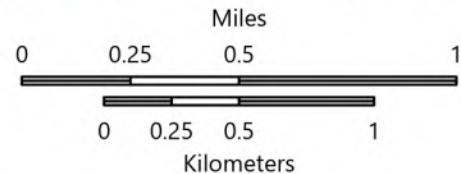
KNP Complex
CA-KNP-000122

10/3/2021

62,761 acres at 10/03/2021 0020 hrs

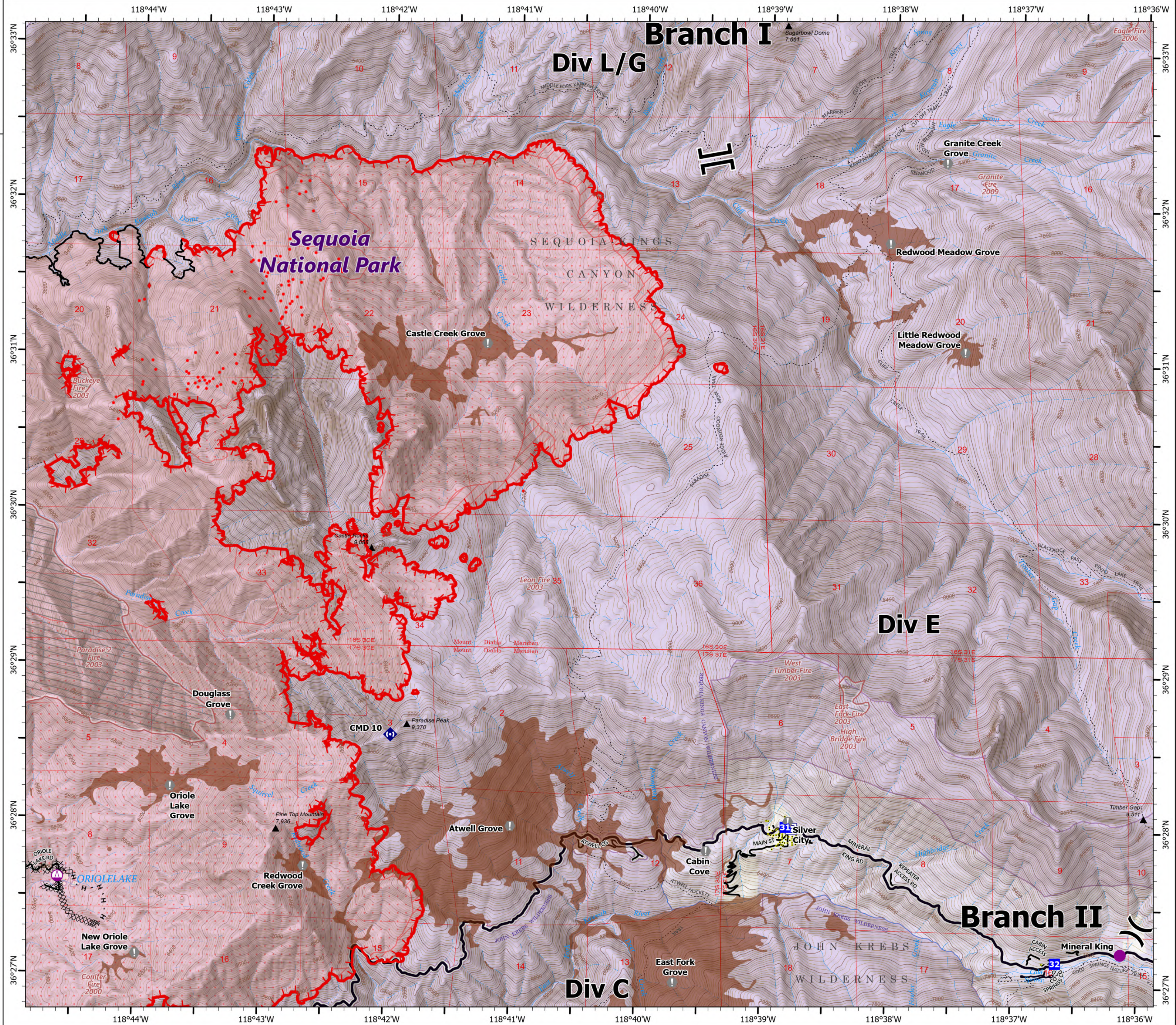


- Helispot
- ⊕ Sling Site
-) (Division Break
-] [Branch Break
- Drop Point
- ⊕ Value at Risk
- ⊕ Repeater
- ⊕ Water Tank
- IR Isolated Heat Source
- Possible IR Heat Source
- Completed Dozer Line
- Completed Hand Line
- ▬ Fire Edge
- ▬ Contained Line
- ▬ Wildfire Daily Fire Perimeter
- ▬ IR Heat Perimeter
- ▬ IR Intense Heat
- ▬ IR Scattered Heat
- Tulare County Address Points (Structures)
- Sequoia Groves
- National Park Service Lands
- USFS Wilderness
- NPS Wilderness
- USFS Boundary
- NPS Unit Boundary
- ▬ Fire History
- Powerline
- Major Road
- Minor Road
- Private Road
- Trail



1:28,000 - SWAINT2 GIS - 10/3/2021 0508

North American 1983 Datum, LatLong Grid



Branch I

Div L/G

Sequoia National Park

Div E

Branch II

Div C