

OPERATIONS

DIV A

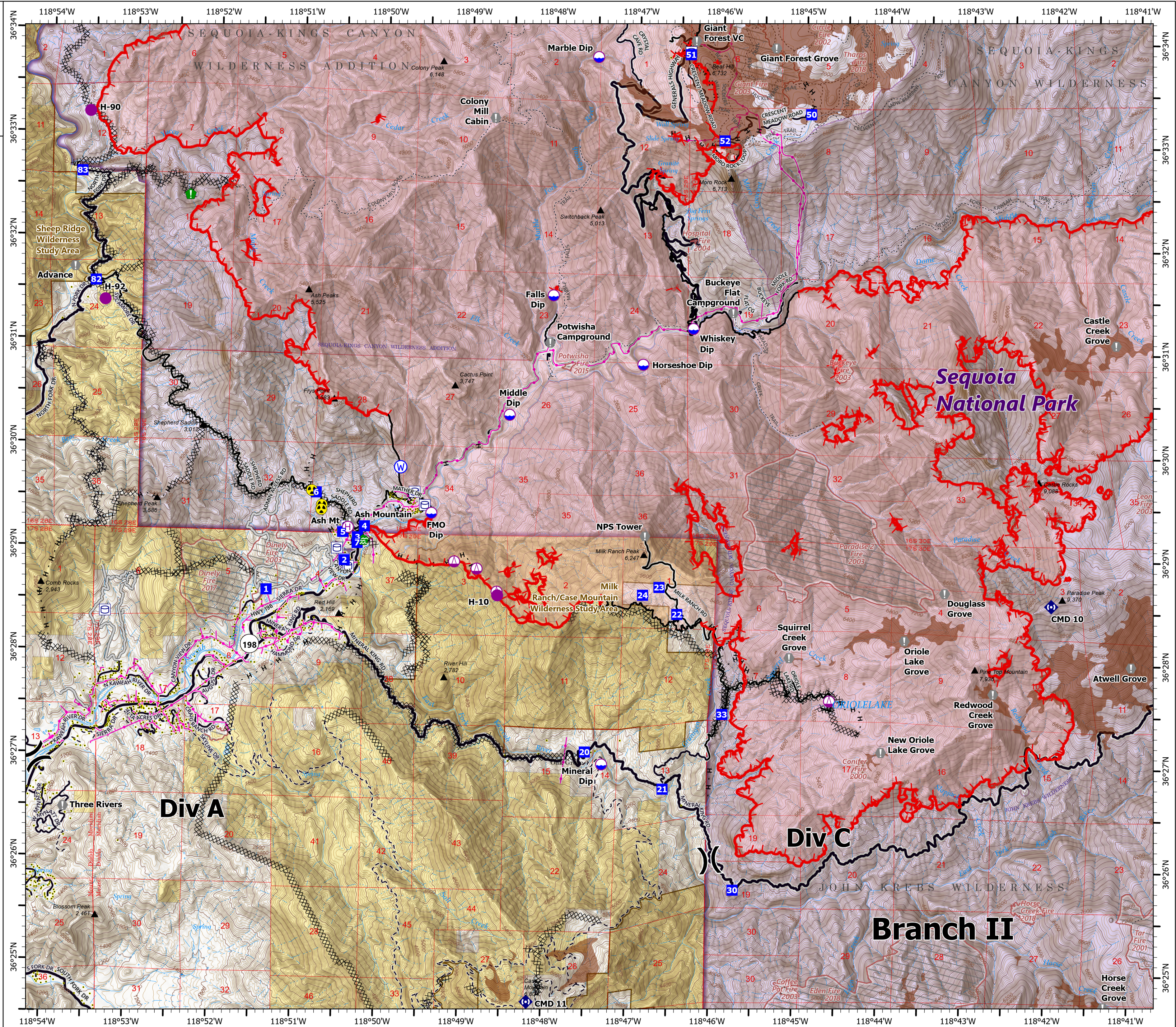
KNP Complex
CA-KNP-000122

10/4/2021

62,761 acres at 10/03/2021 0020 hrs



- Dip Site
- Helispot
- Helibase
- Sling Site
- Division Break
- Drop Point
- Value at Risk
- Water Development or Draft Site
- Resource Location
- Repeater
- Hazard
- Water Source
- Water Tank
- Completed Dozer Line
- Completed Hand Line
- Access or Improved Road
- Fire Edge
- Contained Line
- Tulare County Address Points (Structures)
- Sequoia Groves
- Fire History
- Powerline
- Major Road
- Minor Road
- Private Road
- Major Roads
- Minor Road
- Unpaved Road
- Unverified Route
- Trail
- Wildfire Daily Fire Perimeter
- NPS Unit Boundary
- NPS Wilderness
- BLM Wilderness Study Area
- Bureau of Land Management Lands
- National Park Service Lands
- Private; Local Government; Undesignated



0 0.25 0.5 1 Miles
0 0.25 0.5 1 Kilometers

1:42,000 - SWAINT2 GIS - 10/4/2021 0402
North American 1983 Datum, LatLong Grid