

OPERATIONS

DIV L/G

KNP Complex

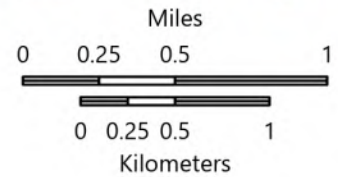
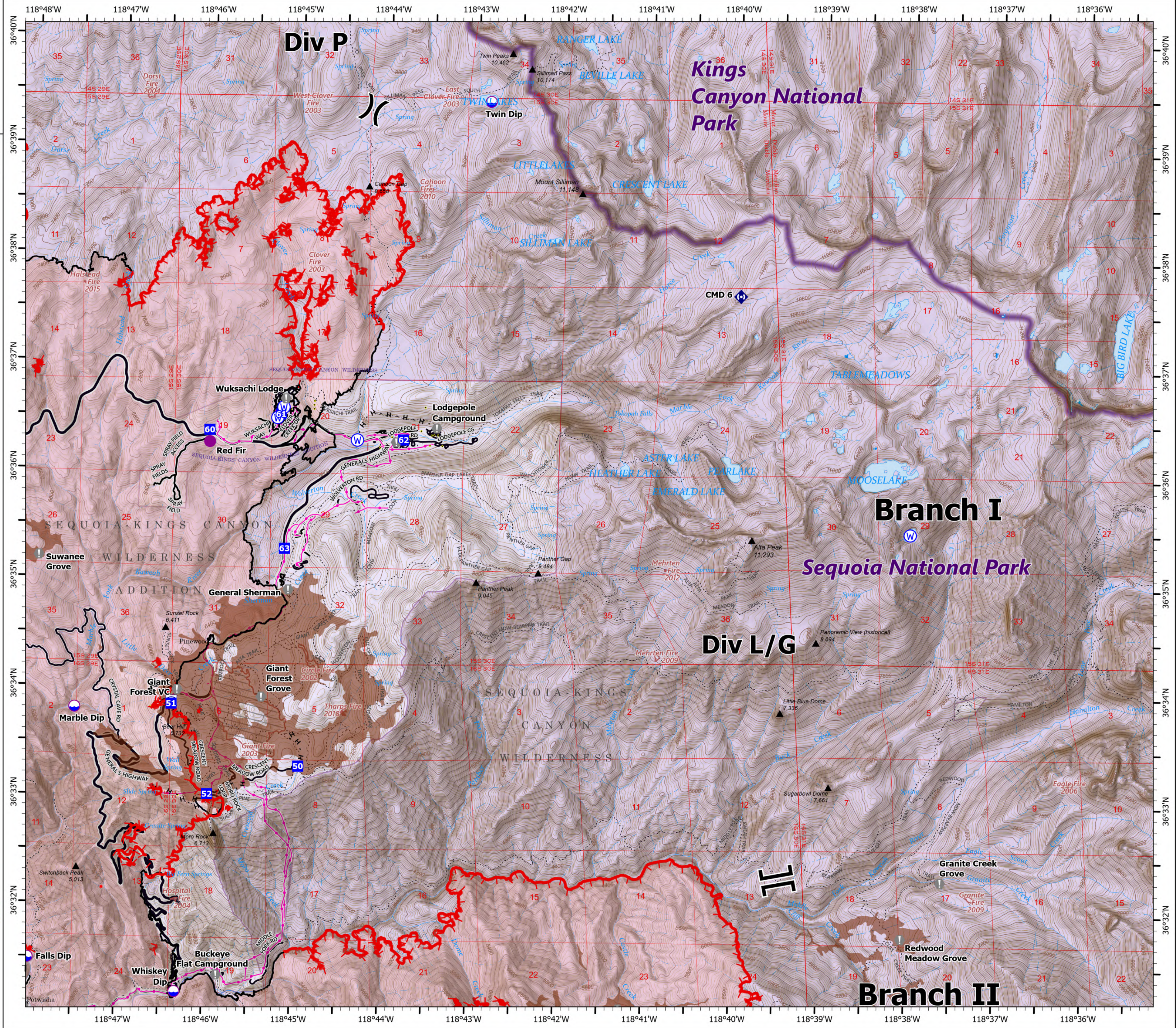
CA-KNP-000122

10/4/2021

67,708 acres at 10/04/2021 0000 hrs



- Dip Site
- Helispot
- Division Break
- Branch Break
- Drop Point
- Value at Risk
- Repeater
- Water Source
- Water Tank
- IR Isolated Heat Source
- Completed Hand Line
- Fire Edge
- Contained Line
- Tulare County Address Points (Structures)
- Sequoia Groves
- Fire History
- Powerline
- Major Road
- Minor Road
- Private Road
- Major Roads
- Trail
- Wildfire Daily Fire Perimeter
- IR Heat Perimeter
- NPS Unit Boundary
- NPS Wilderness
- National Park Service Lands



1:40,000 - SWAIMT2 GIS - 10/4/2021 0553

North American 1983 Datum, LatLong Grid