

OPERATIONS

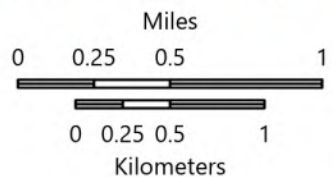
DIV S

KNP Complex
CA-KNP-000122
10/5/2021

79,382 acres at 10/04/2021 1930 hrs

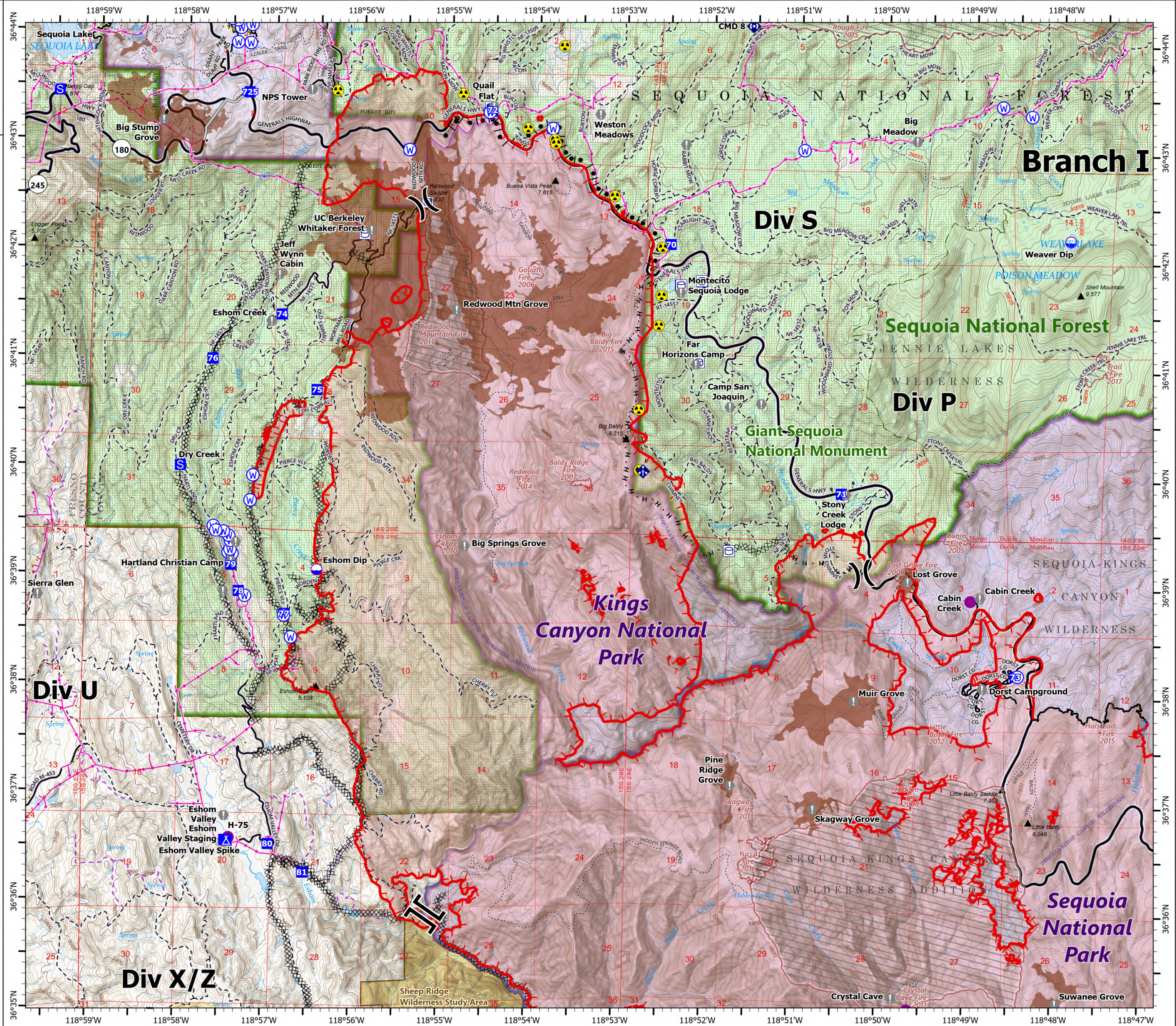


- Dip Site
- Helispot
- Division Break
- Branch Break
- Drop Point
- Camp
- Staging Area
- Value at Risk
- Mobile Weather Unit
- Repeater
- Hazard
- Water Source
- Water Tank
- Completed Burnout
- Completed Dozer Line
- Completed Hand Line
- Access or Improved Road
- Fire Edge
- Contained Line
- Tulare County Address Points (Structures)
- Sequoia Groves
- Fire History
- FS Common Unit Names
- Powerline
- Major Road
- Minor Road
- Private Road
- Unknown Road
- Major Roads
- Major Road
- Minor Road
- Unpaved Road
- Unverified Route
- Trail
- Trail
- Wildfire Daily Fire Perimeter
- Giant Sequoia National Monument
- NPS Unit Boundary
- USFS Boundary
- NPS Wilderness
- USFS Wilderness
- BLM Wilderness Study Area
- USFS Lands
- Bureau of Land Management Lands
- National Park Service Lands



1:40,000 - SWAINT2 GIS - 10/5/2021 0016

North American 1983 Datum, LatLong Grid



Branch I

Div S

Sequoia National Forest

Div P

Giant Sequoia National Monument

Kings Canyon National Park

Div U

Div X/Z