

OPERATIONS

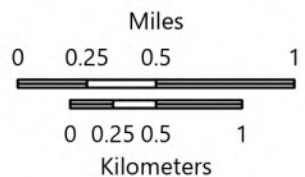
DIV X/Z

KNP Complex
CA-KNP-000122
10/5/2021

79,382 acres at 10/04/2021 1930 hrs

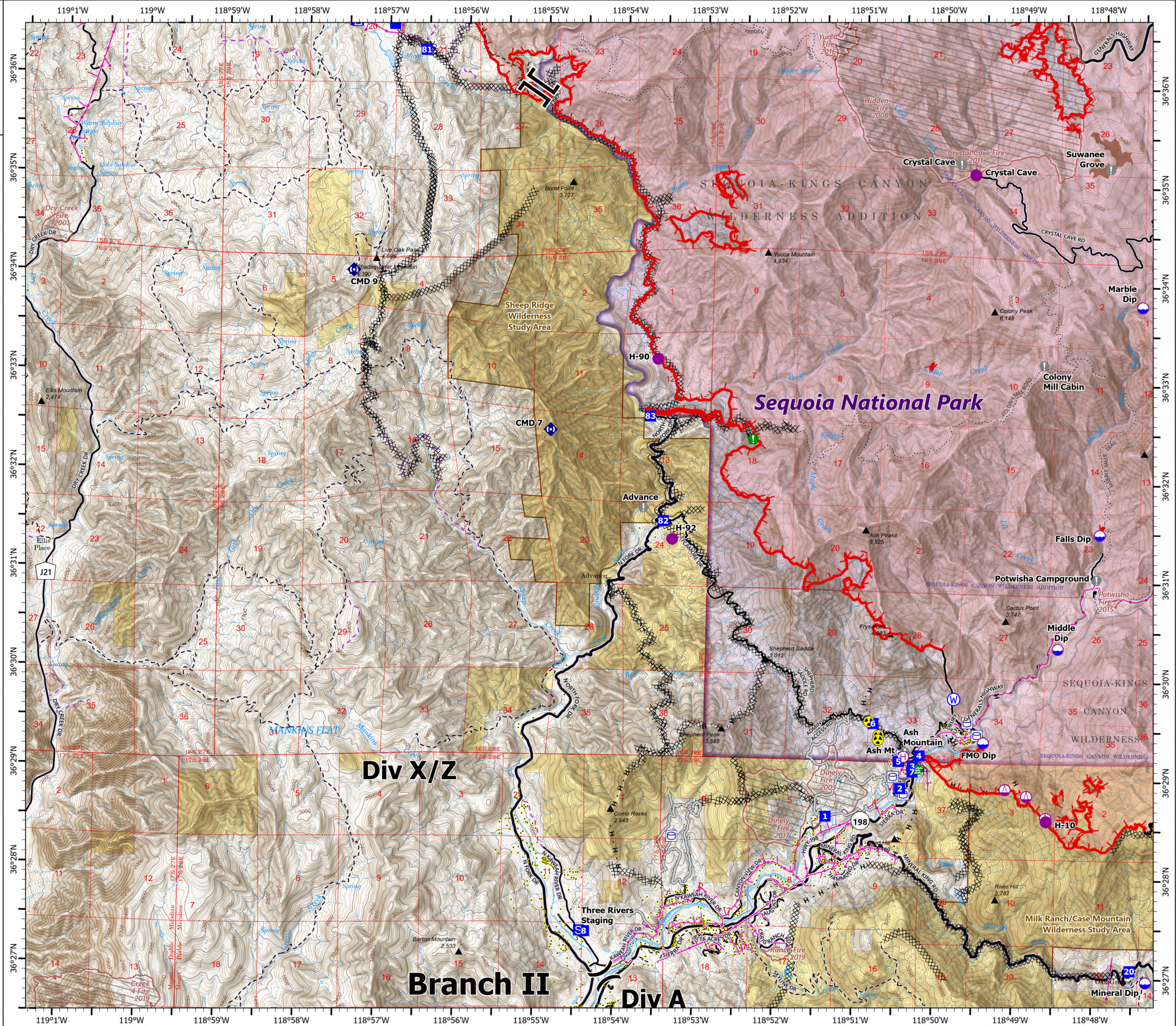


- Dip Site
- Helispot
- Helibase
- Sling Site
- Division Break
- Branch Break
- Drop Point
- Camp
- Staging Area
- Value at Risk
- Water Development or Draft Site
- Resource Location
- Repeater
- Hazard
- Water Source
- Water Tank
- Completed Dozer Line
- Completed Hand Line
- Access or Improved Road
- Fire Edge
- Contained Line
- Tulare County Address Points (Structures)
- Sequoia Groves
- Fire History
- Powerline
- Major Road
- Minor Road
- Private Road
- Major Road
- Minor Road
- Unpaved Road
- Unverified Route
- Trail
- Wildfire Daily Fire Perimeter
- NPS Unit Boundary
- NPS Wilderness
- BLM Wilderness Study Area
- Bureau of Land Management Lands
- National Park Service Lands
- Private; Local Government; Undesignated



1:44,000 - SWAINT2 GIS - 10/5/2021 0019

North American 1983 Datum, Lat/Long Grid



Div X/Z

Branch II

Div A