

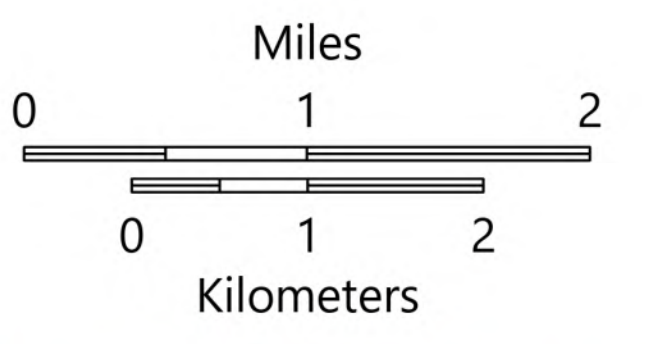
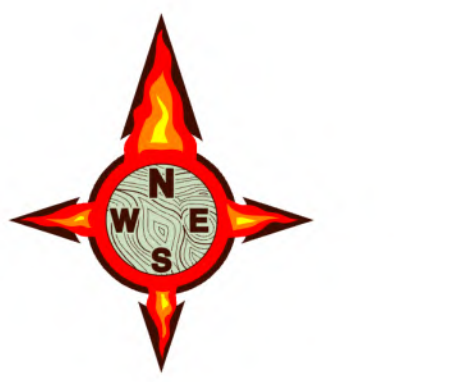
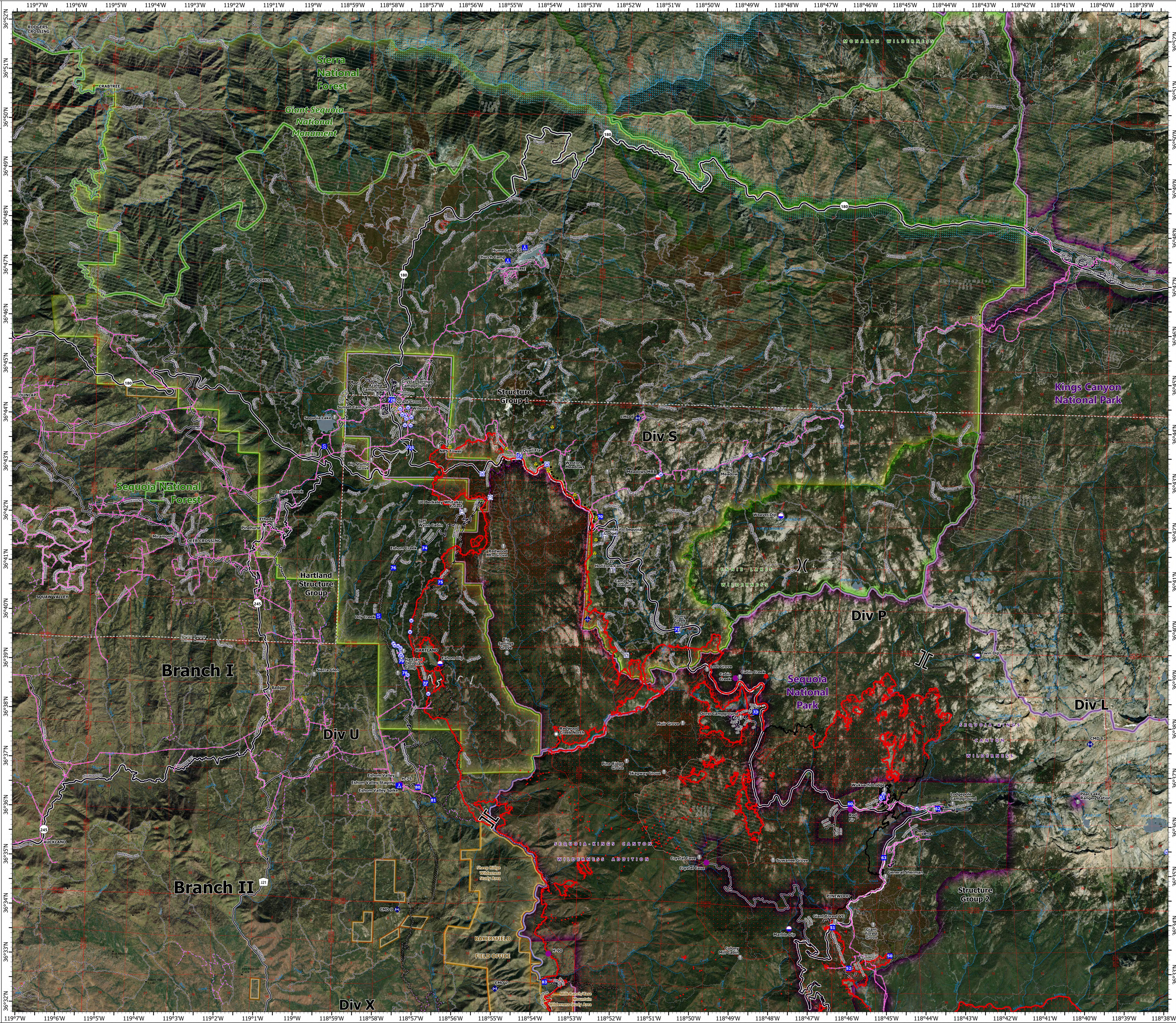
OPERATIONS

BRANCH I

KNP Complex
CA-KNP-000122
10/6/2021

84,166 acres at 10/5/2021 2330

- Dip Site
- Mobile Retardant Base
- Helispot
- Division Break
- Branch Break
- Drop Point
- Camp
- Staging Area
- Value at Risk
- Landmark
- Mobile Weather Unit
- Repeater
- Hazard
- Water Source
- IR Isolated Heat Source
- Structure
- Powerline
- Completed Burnout
- Completed Dozer Line
- Completed Hand Line
- Completed Mixed Construction Line
- Completed Road as Line
- Access or Improved Road
- Fire Edge
- Contained Line
- County Line
- IR Heat Perimeter
- IR Intense Heat
- IR Scattered Heat
- Major Road
- Minor Road
- Unpaved Road
- Unverified Route
- Trail
- Wildfire Daily Fire Perimeter
- Sequoia Groves
- Fire History (>100 Acres)
- Giant Sequoia National Monument
- NPS Unit Boundary
- NPS Wilderness
- USFS Boundary
- USFS Wilderness
- Bureau of Land Management Lands
- BLM Wilderness Study Area
- Wild and Scenic River



1:43,000 - SWA/M72 GIS - 10/6/2021 0414
North American 1983 Datum, LatLong Grid