

# OPERATIONS

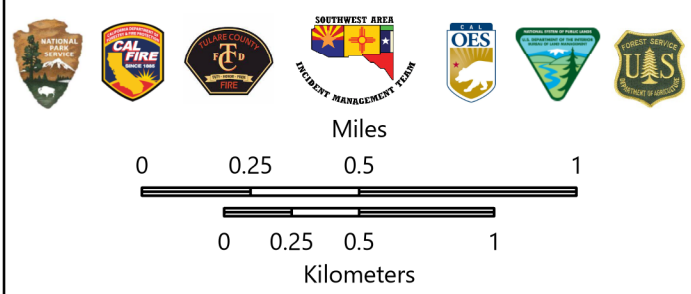
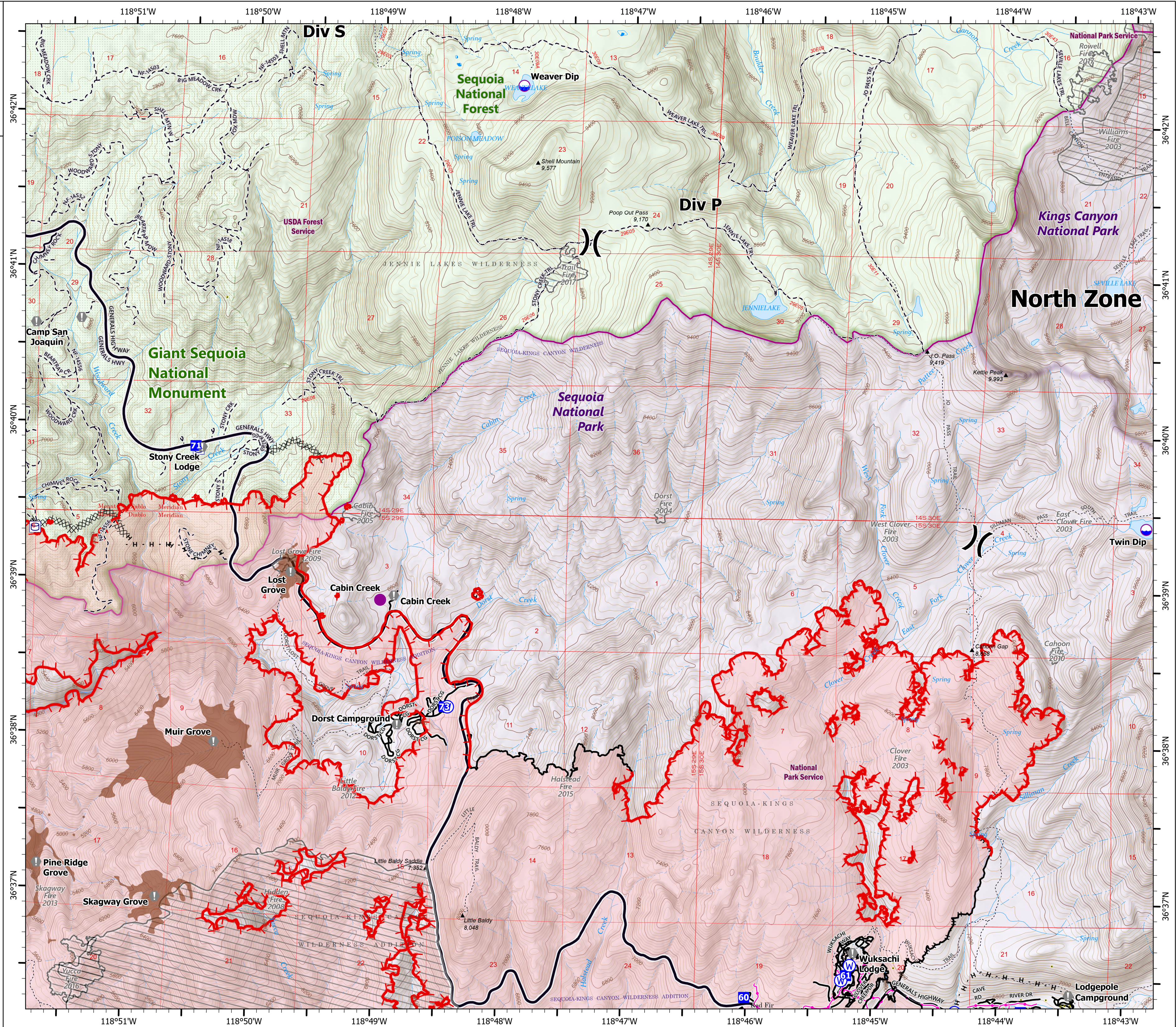
## DIV P

KNP Complex  
CA-KNP-000122  
10/8/2021

85,952 acres at 10/6/2021 2310



- Dip Site
- Helispot
- Division Break
- Drop Point
- Value at Risk
- Water Source
- Water Tank
- Completed Dozer Line
- Completed Hand Line
- Fire Edge
- Contained Line
- Tulare County Address Points (Structures)
- Sequoia Groves
- Fire History
- Powerline
- Major Road
- Minor Road
- Trail
- Wildfire Daily Fire Perimeter
- Giant Sequoia National Monument
- NPS Unit Boundary
- USFS Boundary
- NPS Wilderness
- USFS Wilderness
- USFS Lands
- National Park Service Lands
- Prescribed Fire History
- CA Direct Protection Areas



1:28,000 - SWAIMT2 GIS - 10/7/2021 2240

North American 1983 Datum, LatLong Grid