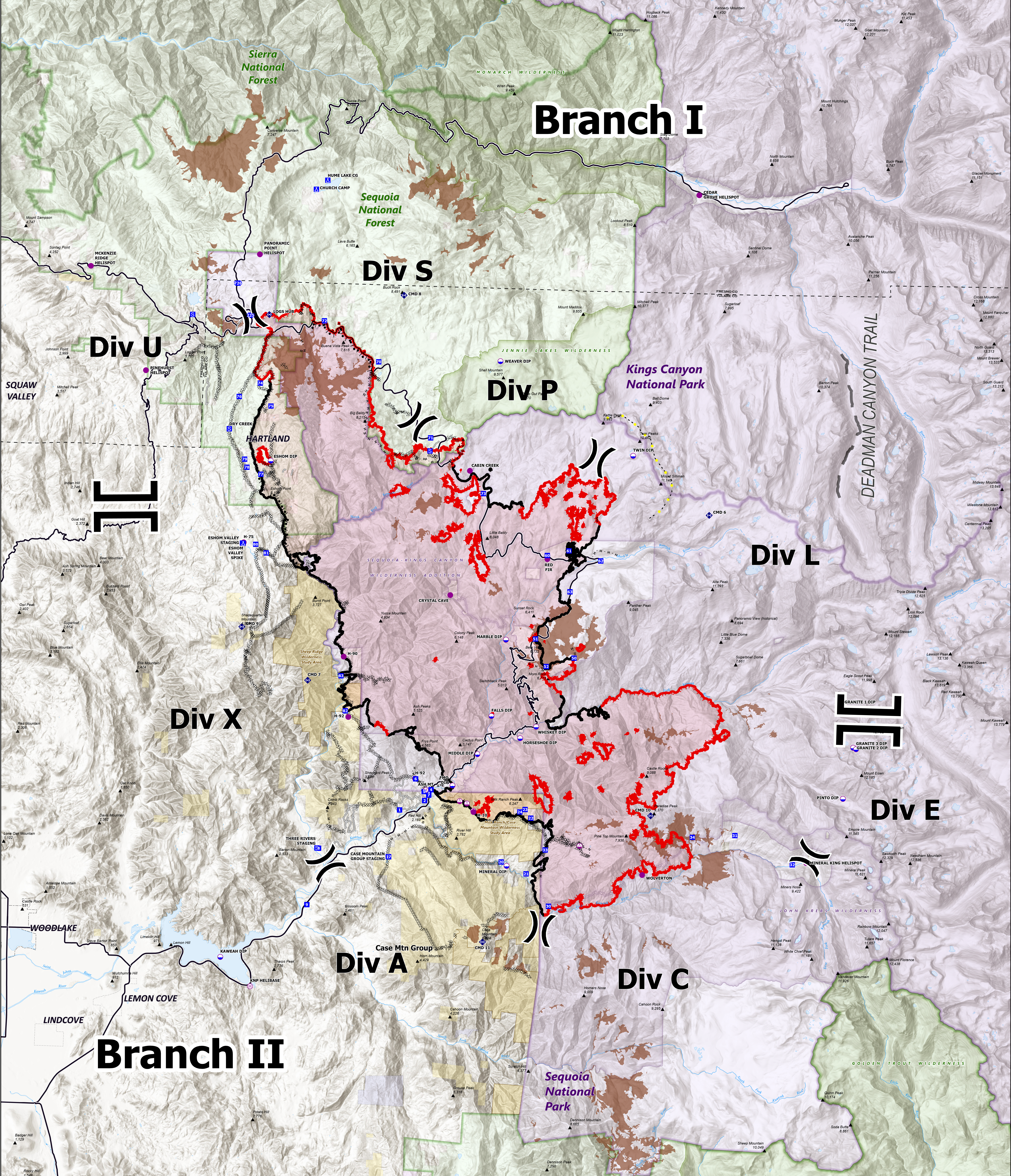


# Branch I



## BRIEFING

KNP Complex  
CA-KNP-000122  
10/13/2021

87,786 acres at 10/11/2021 2038

1:63,000 - CIIM2 GIS - 10/12/2021 1557

North American 1983 Datum, LatLong Grid

- |   |  |   |  |
|---|--|---|--|
| <ul style="list-style-type: none"> <li> Helibase</li> <li> Helispot</li> <li> Dip Site</li> <li> Sling Site</li> <li> Division Break</li> <li> Branch Break</li> <li> Drop Point</li> <li> Camp</li> <li> Staging Area</li> </ul> | <ul style="list-style-type: none"> <li> Repeater</li> <li> Summit</li> <li> Completed Burnout</li> <li> Completed Dozer Line</li> <li> Completed Hand Line</li> <li> Access or Improved Road</li> <li> Contained Line</li> <li> Fire Edge</li> <li> Natural Barrier</li> </ul> | <ul style="list-style-type: none"> <li> Wildfire Daily Fire Perimeter</li> <li> Sequoia Groves</li> <li> Lakes</li> <li> NPS Unit Boundary</li> <li> NPS Wilderness</li> <li> USFS Boundary</li> <li> USFS Lands</li> <li> USFS Wilderness</li> <li> BLM Wilderness Study Area</li> </ul> | <ul style="list-style-type: none"> <li> County Boundary</li> <li> State Public Lands</li> <li> Other State Lands</li> <li> U.S. Fish &amp; Wildlife Service Lands</li> <li> Bureau of Land Management Lands</li> <li> National Park Service Lands</li> </ul> |
|---|--|---|--|

