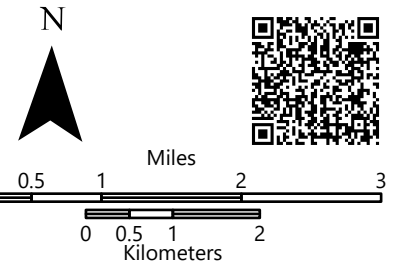
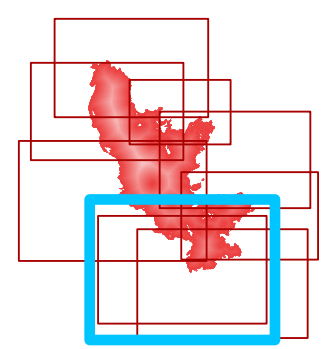




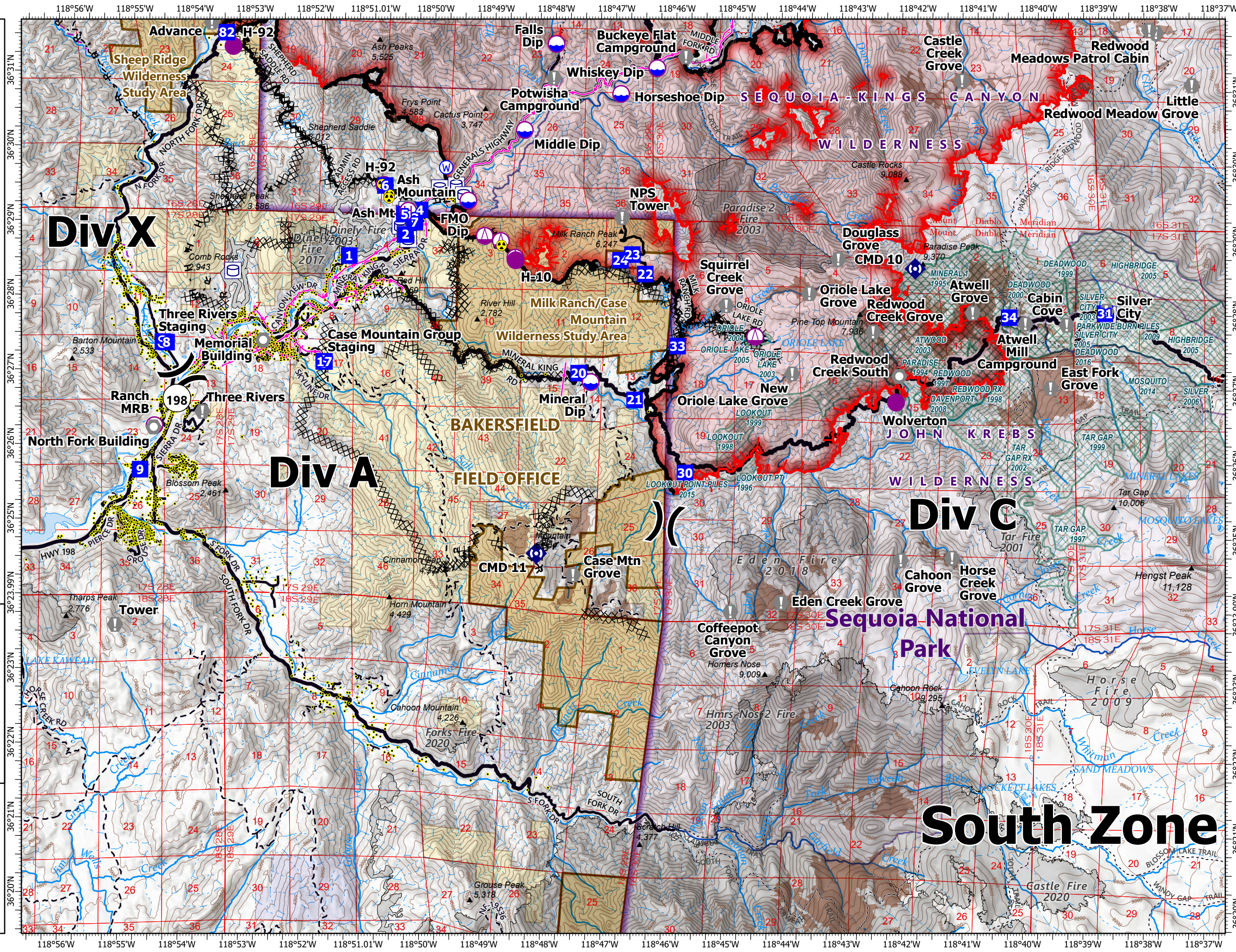
# Field Operations KNP Complex CA-KNP-000122 10/12/2021

## Div A

- Dip Site
- Mobile Retardant Base
- Helispot
- Helibase
- Sling Site
- Division Break
- Drop Point
- Staging Area
- Value at Risk
- Landing Station
- Repeater
- Hazard
- Water Source
- Label Point
- Water Tank
- Structure
- Powerline
- Wildfire Daily Fire Perimeter
- Completed Dozer Line
- Completed Hand Line
- Completed Mixed Construction Line
- R Completed Road as Line
- Access or Improved Road
- Other
- Fire Edge
- Contained Line
- County Line
- Major Road
- Minor Road
- Private Road
- Major Roads
- Major Road
- Minor Road
- Unpaved Road
- Unverified Route
- Trail
- Sequoia Groves
- Fire History (>100 Acres)
- Fire History (>100 Acres)
- Prescribed Fire History
- Gaging Station
- Waterfall
- Dam / Weir
- Nonearthen Shore
- Stream / River
- Stream/River; Artificial Path
- Pipeline
- Stream/River Intermittent
- Lake / Pond
- Lake / Pond (Intermittent)
- Reservoir
- Township
- Section
- NPS Unit Boundary
- NPS Wilderness
- BLM Wilderness Study Area
- State Public Lands
- Bureau of Land Management Lands
- 0
- 1



10/11/2021 2210  
North American 1983 Datum

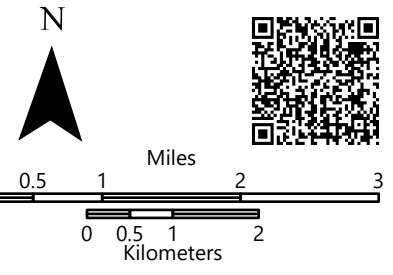
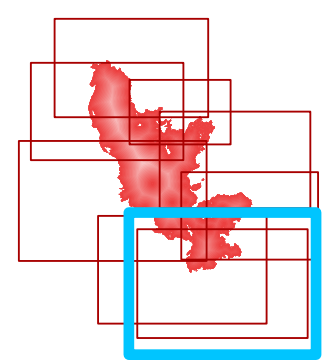




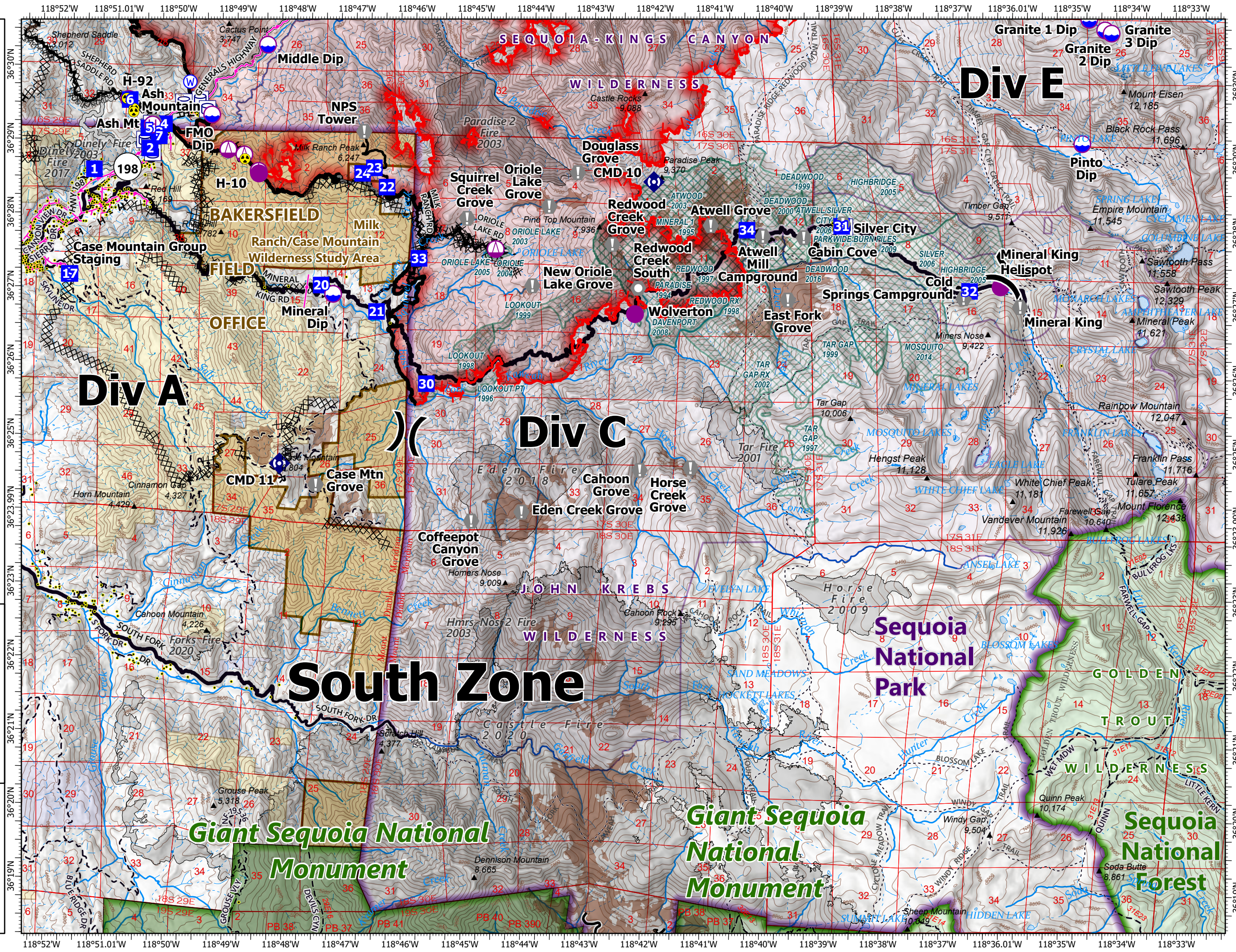
**Field Operations**  
**KNP Complex**  
**CA-KNP-000122**  
**10/12/2021**

**Div C**

- Dip Site
- Helispot
- Helibase
- Sling Site
- Division Break
- Drop Point
- Staging Area
- Value at Risk
- Landmark
- Repeater
- Hazard
- Water Source
- Label Point
- Water Tank
- Structure
- Powerline
- Wildfire Daily Fire Perimeter
- Completed Dozer Line
- Completed Hand Line
- Completed Mixed Construction Line
- Completed Road as Line
- Access or Improved Road
- Other
- Fire Edge
- Contained Line
- Summit/Gap
- County Line
- Major Road
- Minor Road
- Private Road
- Major Roads
- Major Road
- Fire History (>100 Acres)
- Fire History (>100 Acres)
- Prescribed Fire History
- Gaging Station
- Spring/Seep
- Waterfall
- Dam / Weir
- Nonearthen Shore
- Wash
- Stream/River; Artificial Path
- Pipeline
- Stream/River Intermittent
- Lake / Pond
- Lake / Pond (Intermittent)
- Reservoir
- Township
- Section
- Giant Sequoia National Monument
- NPS Unit Boundary
- USFS Boundary
- NPS Wilderness
- USFS Wilderness
- BLM Wilderness Study Area



10/11/2021 2211  
 North American 1983 Datum



**Giant Sequoia National Monument**

**Giant Sequoia National Monument**

**Sequoia National Forest**

**South Zone**

**Sequoia National Park**

**GOLDEN TROUT WILDERNESSES**

**JOHN KREBS WILDERNESS**

**Div C**

**Div A**

**Div B**

**SEQUOIA-KINGS CANYON WILDERNESS**



# Field Operations

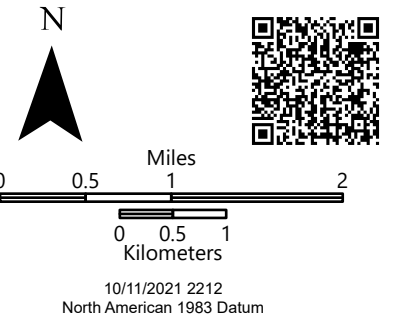
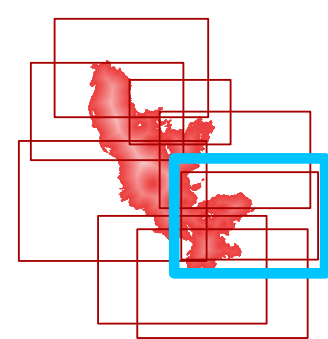
## KNP Complex

### CA-KNP-000122

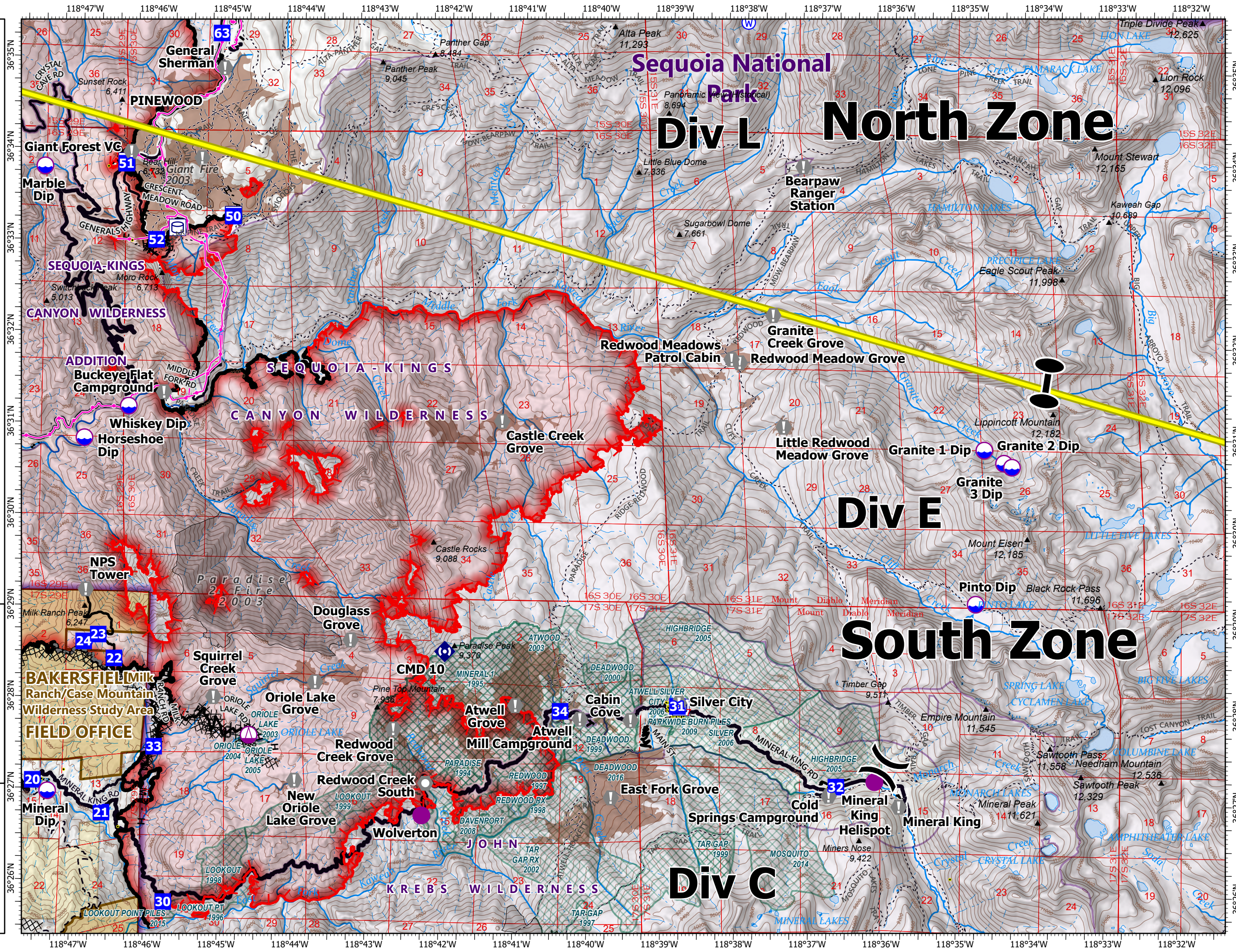
#### 10/12/2021

### Div E

- Dip Site
- Helispot
- Sling Site
- Division Break
- Zone Break
- Drop Point
- Value at Risk
- Landmark
- Repeater
- Water Source
- Water Tank
- Structure
- Powerline
- Wildfire Daily Fire
- Perimeter
- Completed Dozer Line
- Completed Hand Line
- Completed Mixed Construction Line
- Completed Road as Line
- Other
- Fire Edge
- Contained Line
- Summit; Gap
- County Line
- Major Road
- Minor Road
- Private Road
- Major Roads
- Minor Road
- Unpaved Road
- Trail
- Sequoia Groves
- Fire History (>100 Acres)
- Prescribed Fire History
- Gaging Station
- Spring/Seep
- Waterfall
- Dam / Weir
- Stream/River; Artificial
- Pipeline
- Stream/River Intermittent
- Ice Mass
- Lake / Pond
- Lake / Pond (Intermittent)
- Township
- Section
- NPS Unit Boundary
- NPS Wilderness
- BLM Wilderness Study Area
- Bureau of Land Management Lands



10/11/2021 2212  
North American 1983 Datum



118°47'W 118°46'W 118°45'W 118°44'W 118°43'W 118°42'W 118°41'W 118°40'W 118°39'W 118°38'W 118°37'W 118°36'W 118°35'W 118°34'W 118°33'W 118°32'W

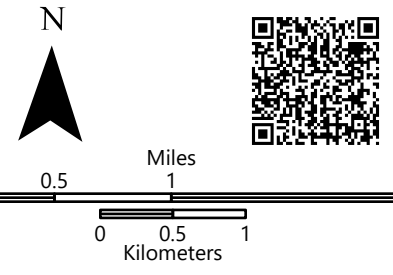
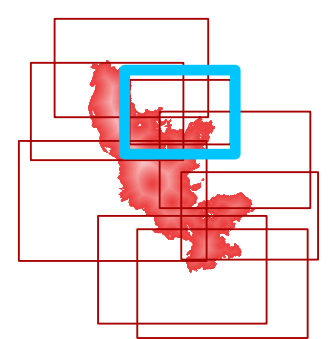




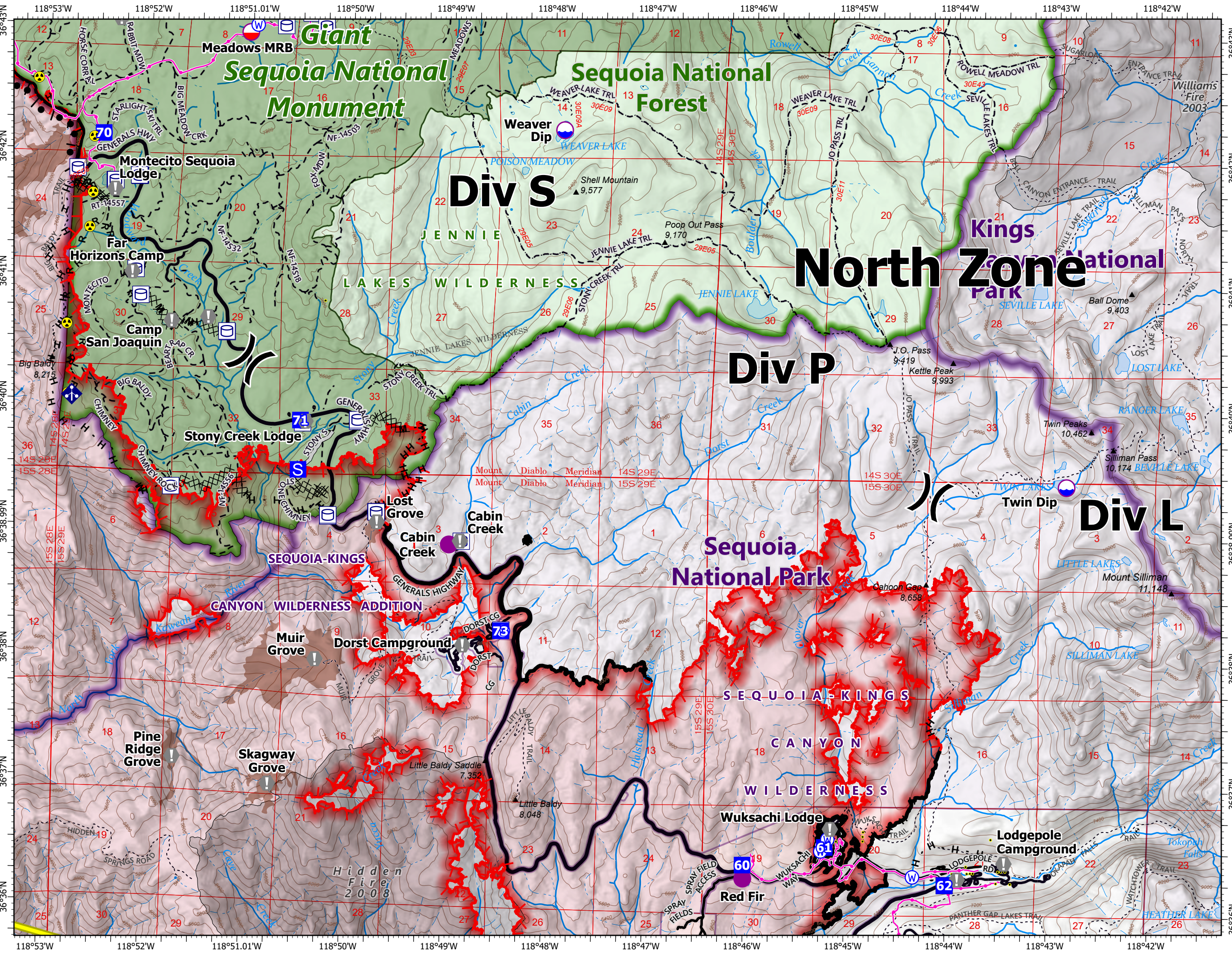
# Field Operations KNP Complex CA-KNP-00122 10/12/2021

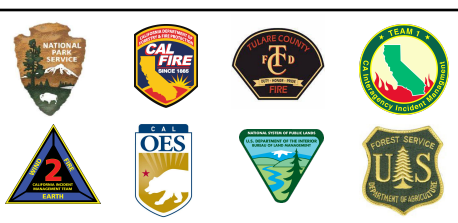
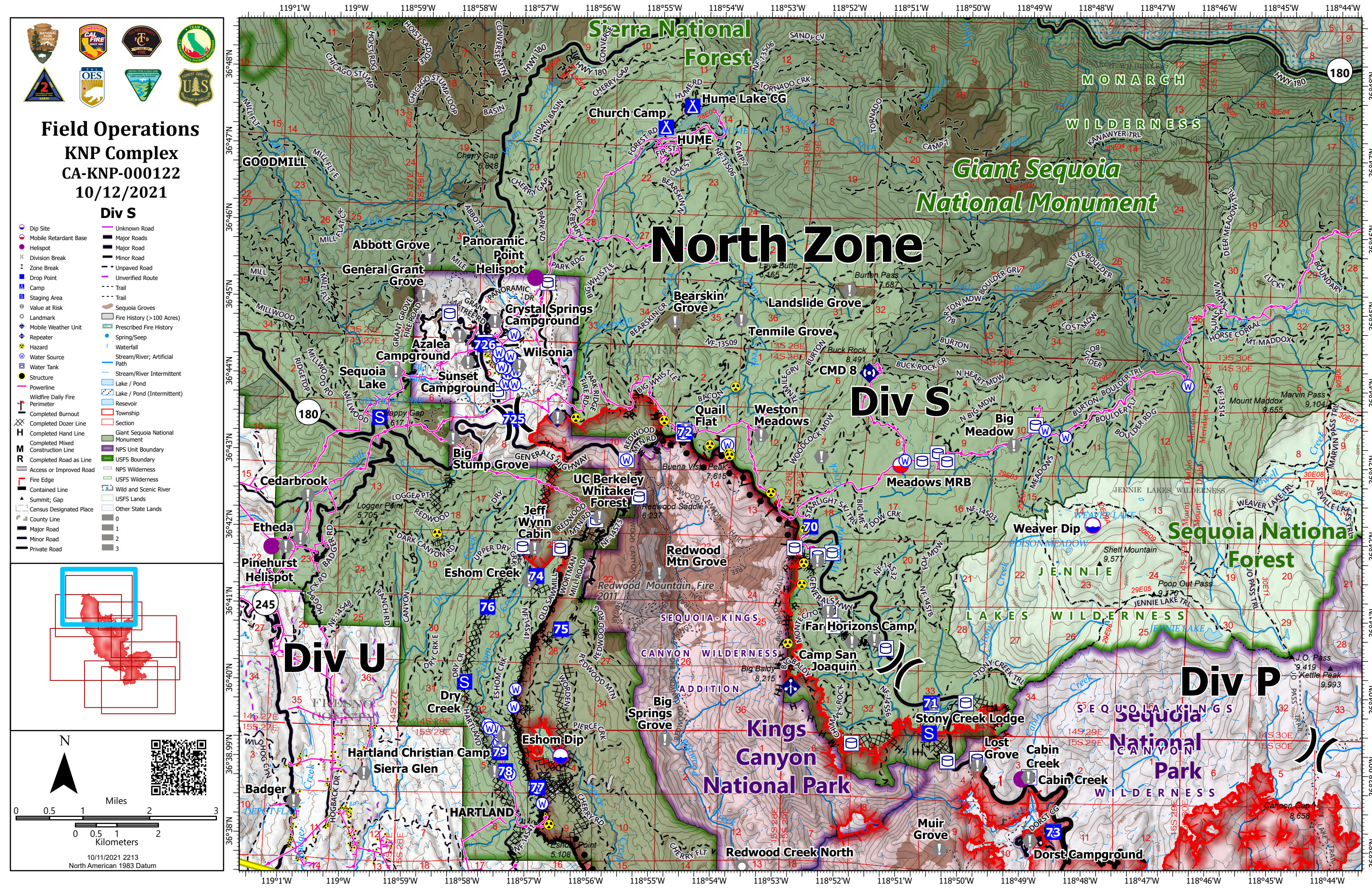
## Div P

- Dip Site
- Mobile Retardant Base
- Hellspot
- Division Break
- Drop Point
- Staging Area
- Value at Risk
- Landmark
- Mobile Weather Unit
- Hazard
- Water Source
- Water Tank
- Structure
- Powerline
- Wildfire Daily Fire
- Perimeter
- Completed Burnout
- Completed Dozer Line
- Completed Hand Line
- Completed Mixed Construction Line
- Completed Road as Line
- Access or Improved Road
- Fire Edge
- Contained Line
- Summit; Gap
- County Line
- Major Road
- Minor Road
- Private Road
- Major Roads
- Minor Road
- Unpaved Road
- Trail
- Sequoia Groves
- Fire History (>100 Acres)
- Gaging Station
- Spring/Seep
- Waterfall
- Stream/River; Artificial Path
- Stream/River Intermittent
- Lake / Pond
- Lake / Pond (Intermittent)
- Township
- Section
- Giant Sequoia National Monument
- NPS Unit Boundary
- USFS Boundary
- NPS Wilderness
- USFS Wilderness
- USFS Lands
- 0
- 1
- 2
- 3
- 4
- 5
- 6
- 7
- 8
- 9
- 10
- 11
- 12
- 13



10/11/2021 2213  
North American 1983 Datum

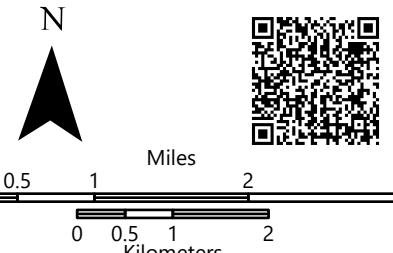
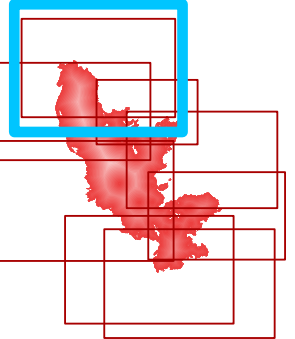




**Field Operations**  
**KNP Complex**  
**CA-KNP-000122**  
**10/12/2021**

**Div S**

- Dip Site
- Mobile Retardant Base
- Hellsport
- Division Break
- Zone Break
- Drop Point
- Camp
- Staging Area
- Value at Risk
- Landmark
- Mobile Weather Unit
- Repeater
- Hazard
- Water Source
- Water Tank
- Structure
- Powerline
- Wildfire Daily Fire
- Perimeter
- Completed Burnout
- Completed Dozer Line
- Completed Hand Line
- Completed Mixed Construction Line
- Completed Road as Line
- Access or Improved Road
- Fire Edge
- Contained Line
- Summit; Gap
- Census Designated Place
- County Line
- Major Road
- Minor Road
- Private Road
- Unknown Road
- Major Roads
- Major Road
- Minor Road
- Unpaved Road
- Unverified Route
- Trail
- Trail
- Sequoia Groves
- Fire History (>100 Acres)
- Prescribed Fire History
- Spring/Seep
- Waterfall
- Stream/River; Artificial Path
- Lake / Pond
- Lake / Pond (Intermittent)
- Reservoir
- Township
- Section
- Giant Sequoia National Monument
- Completed Construction Line
- USFS Boundary
- USFS Lands
- USFS Wilderness
- Wild and Scenic River
- USFS Lands
- Other State Lands
- Fire History (0)
- Fire History (1)
- Fire History (2)
- Fire History (3)



**North Zone**

**Div S**

**Div U**

**Div P**

**Kings Canyon National Park**

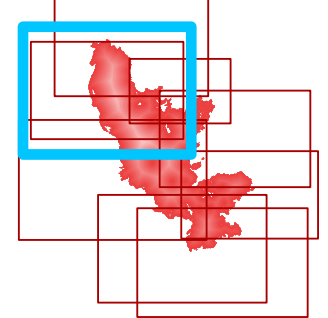
**Sequoia National Park**



**Field Operations**  
**KNP Complex**  
**CA-KNP-000122**  
**10/12/2021**

**Div U**

- Dip Site
- Mobile Retardant Base
- Hellsport
- Division Break
- Zone Break
- Drop Point
- Camp
- Staging Area
- Value at Risk
- Landmark
- Mobile Weather Unit
- Repeater
- Hazard
- Water Source
- Water Tank
- Structure
- Powerline
- Wildfire Daily Fire
- Perimeter
- Completed Burnout
- Completed Dozer Line
- Completed Hand Line
- Completed Mixed Construction Line
- Completed Road as Line
- Access or Improved Road
- Fire Edge
- Contained Line
- Summit; Gap
- Census Designated Place
- County Line
- Major Road
- Minor Road
- Private Road
- Unknown Road
- Major Road
- Minor Road
- Unpaved Road
- Unverified Route
- Trail
- Trail
- Sequoia Groves
- Fire History (>100 Acres)
- Prescribed Fire History
- Spring/Seep
- Waterfall
- Stream/River; Artificial Path
- Stream/River Intermittent
- Lake / Pond
- Lake / Pond (Intermittent)
- Township
- Section
- Giant Sequoia National Monument
- NPS Unit Boundary
- USFS Boundary
- NPS Wilderness
- USFS Wilderness
- BLM Wilderness Study Area
- USFS Lands
- Other State Lands
- Bureau of Land Management Lands
- 0
- 1

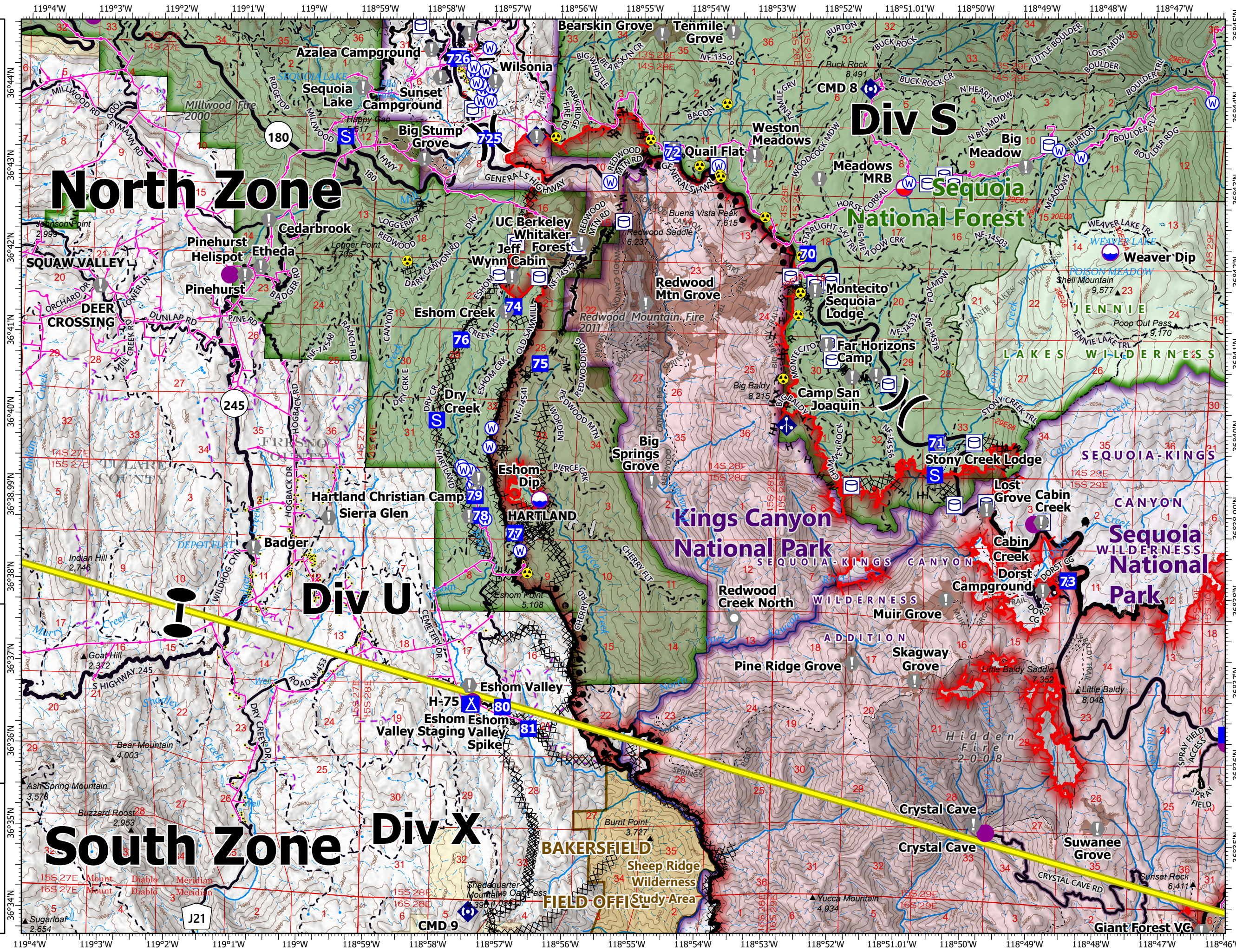


N

Miles  
0 0.5 1 2 3

Kilometers  
0 0.5 1 2

10/11/2021 2214  
North American 1983 Datum

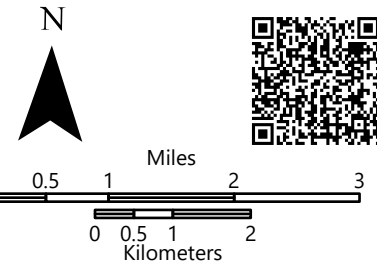
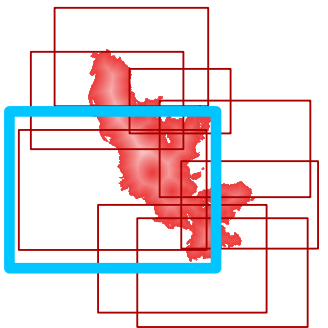




# Field Operations KNP Complex CA-KNP-000122 10/12/2021

## Div X

- Dip Site
- Mobile Retardant Base
- Hellspot
- Helibase
- Sling Site
- Division Break
- Zone Break
- Drop Point
- Camp
- Staging Area
- Value at Risk
- Landmark
- Repeater
- Hazard
- Water Source
- Water Tank
- Structure
- Powerline
- Wildfire Daily Fire Perimeter
- Completed Burnout
- Completed Dozer Line
- Completed Hand Line
- Completed Mixed Construction Line
- Completed Road as Line
- Access or Improved Road
- Other
- Fire Edge
- Contained Line
- Summit, Gap
- Incorporated Place
- Census Designated Place
- County Line
- Major Road
- Minor Road
- Private Road
- Major Roads
- Minor Road
- Unpaved Road
- Unverified Route
- Trail
- Sequoia Groves
- Fire History (>100 Acres)
- Fire History (>100 Acres)
- Prescribed Fire History
- Gaging Station
- Spring/Seep
- Waterfall
- Well
- Dam / Weir
- Nonearththen Shore
- Spillway
- Stream / River
- Wash
- Stream/River; Artificial Path
- Canal / Ditch
- Pipeline
- Stream/River Intermittent
- Lake / Pond
- Lake / Pond (Intermittent)
- Reservoir
- Township
- Section
- Giant Sequoia National Monument



10/11/2021 2214  
North American 1983 Datum

