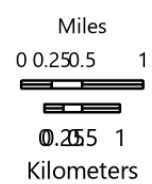


# PIO TRAP LINE WEST

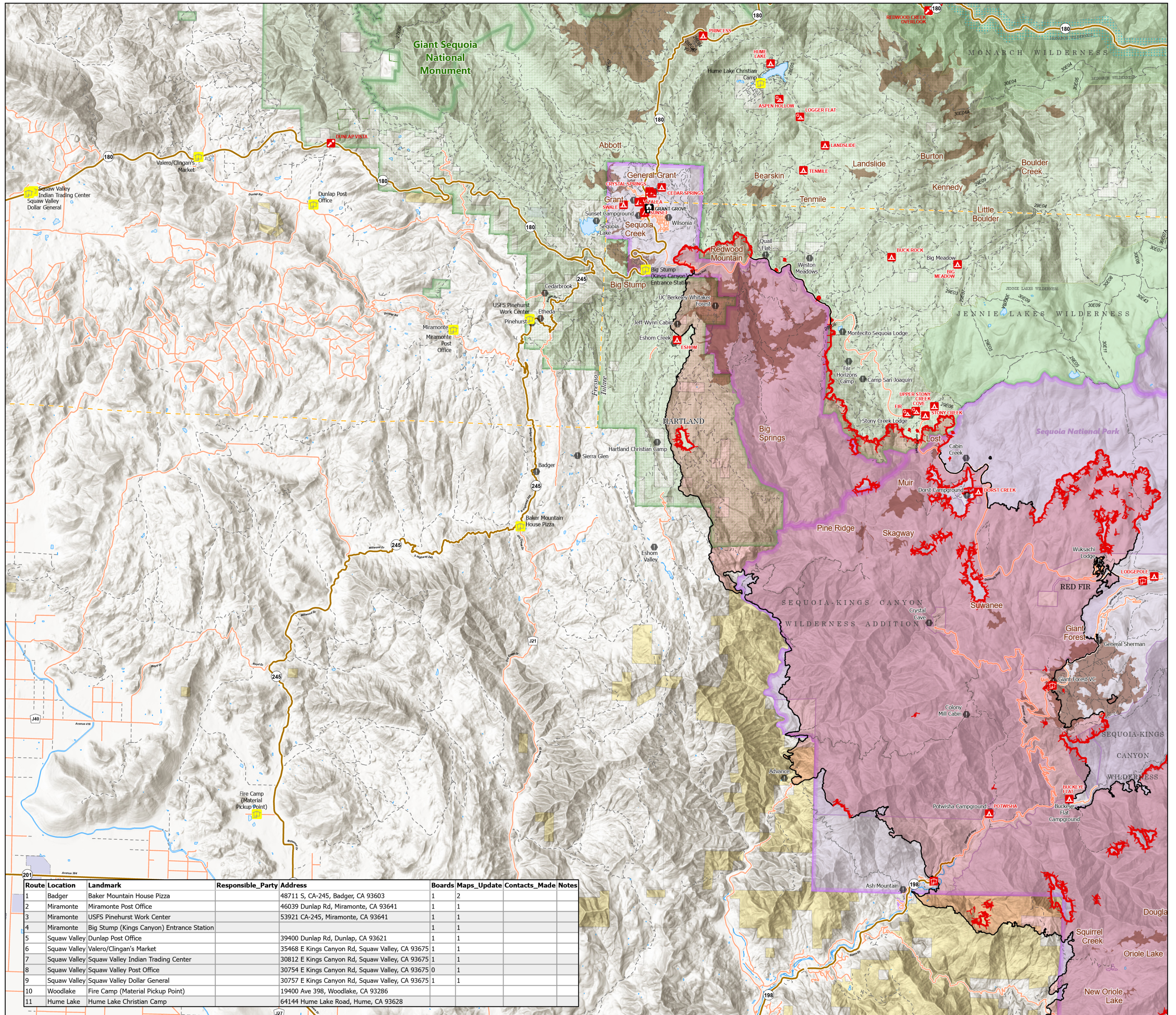
KNP Complex  
CA-KNP-000122  
10/14/2021  
87,795 acres at 10/13/2021 2036

- PIO Trap Line - West
- Ranger Station
- Campground
- Visitor Center
- Group Campground
- Interpretive Site
- Campground
- Value at Risk
- Fire Edge
- Contained Line
- Wildfire Daily Fire Perimeter
- Trail
- Major Roads
- Minor Roads
- Unimproved Roads
- Park Trails
- Sequoia Groves
- County Boundary
- NPS Wilderness
- USFS Wilderness
- USFS Boundaries
- Great Sequoia Nat Mon
- Wild and Scenic River
- NPS Boundaries
- State Public Lands
- Other State Lands
- Bureau of Land Management Lands
- Private; Local Government; Undesignated
- USFS Lands



1:100,000 - CIIMT2 GIS - 10/13/2021 2222

North American 1983 Datum. LatLong Grid



Route	Location	Landmark	Responsible_Party	Address	Boards	Maps_Update	Contacts_Made	Notes
1	Badger	Baker Mountain House Pizza		48711 S, CA-245, Badger, CA 93603	1	2		
2	Miramonte	Miramonte Post Office		46039 Dunlap Rd, Miramonte, CA 93641	1	1		
3	Miramonte	USFS Pinehurst Work Center		53921 CA-245, Miramonte, CA 93641	1	1		
4	Miramonte	Big Stump (Kings Canyon) Entrance Station			1	1		
5	Squaw Valley	Dunlap Post Office		39400 Dunlap Rd, Dunlap, CA 93621	1	1		
6	Squaw Valley	Valero/Clingan's Market		35468 E Kings Canyon Rd, Squaw Valley, CA 93675	1	1		
7	Squaw Valley	Squaw Valley Indian Trading Center		30812 E Kings Canyon Rd, Squaw Valley, CA 93675	1	1		
8	Squaw Valley	Squaw Valley Post Office		30754 E Kings Canyon Rd, Squaw Valley, CA 93675	0	1		
9	Squaw Valley	Squaw Valley Dollar General		30757 E Kings Canyon Rd, Squaw Valley, CA 93675	1	1		
10	Woodlake	Fire Camp (Material Pickup Point)		19400 Ave 398, Woodlake, CA 93286				
11	Hume Lake	Hume Lake Christian Camp		64144 Hume Lake Road, Hume, CA 93628				