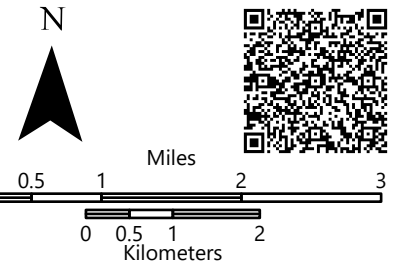
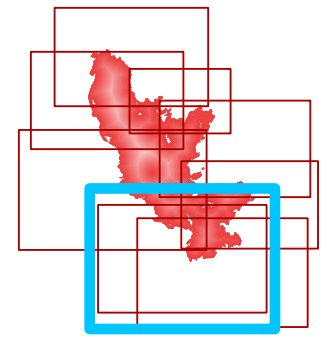


Field Operations

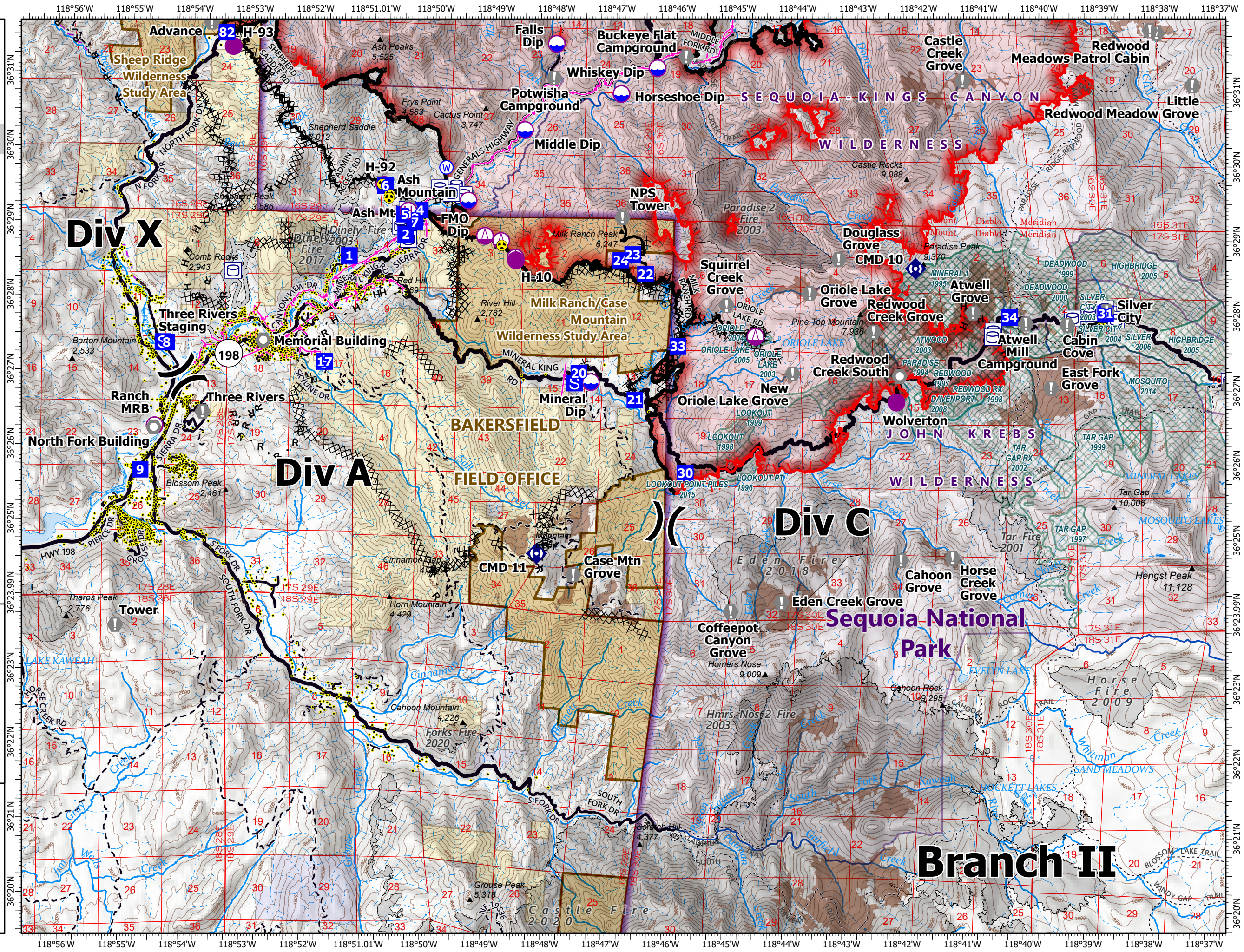
KNP Complex
CA-KNP-000122
10/15/2021

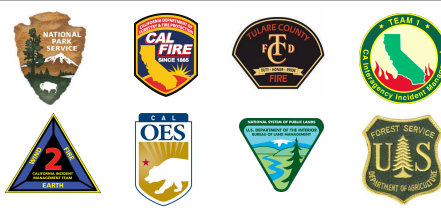
Div A

- Dip Site
- Mobile Retardant Base
- Helispot
- Helibase
- Sling Site
- Division Break
- Drop Point
- Staging Area
- Value at Risk
- Landmark
- Repeater
- Hazard
- Water Source
- Water Tank
- Structure
- Powerline
- Wildfire Daily Fire Perimeter
- Completed Dozer Line
- Completed Hand Line
- Completed Mixed Construction Line
- Completed Road as Line
- Access or Improved Road
- Other
- Fire Edge
- Contained Line
- Summit; Gap
- County Line
- Major Road
- Minor Road
- Private Road
- Major Road
- Minor Road
- Major Road
- Fire History (>100 Acres)
- Fire History (>100 Acres)
- Prescribed Fire History
- Gaging Station
- Spring/Seep
- Waterfall
- Dam / Weir
- Nonearthen Shore
- Stream / River
- Wash
- Stream/River; Artificial Path
- Pipeline
- Stream/River Intermittent
- Lake / Pond
- Lake / Pond (Intermittent)
- Reservoir
- Township
- Section
- NPS Unit Boundary
- NPS Wilderness
- BLM Wilderness Study Area
- State Public Lands
- Bureau of Land Management Lands
- 0
- 1
- 2



10/14/2021 2219
 North American 1983 Datum



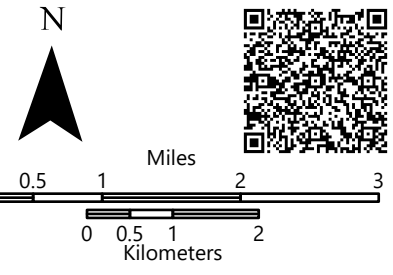
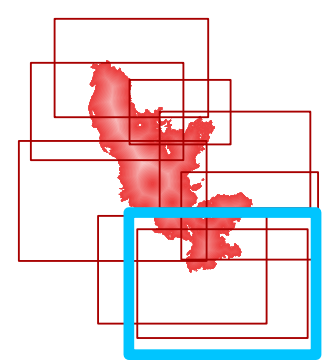


Field Operations

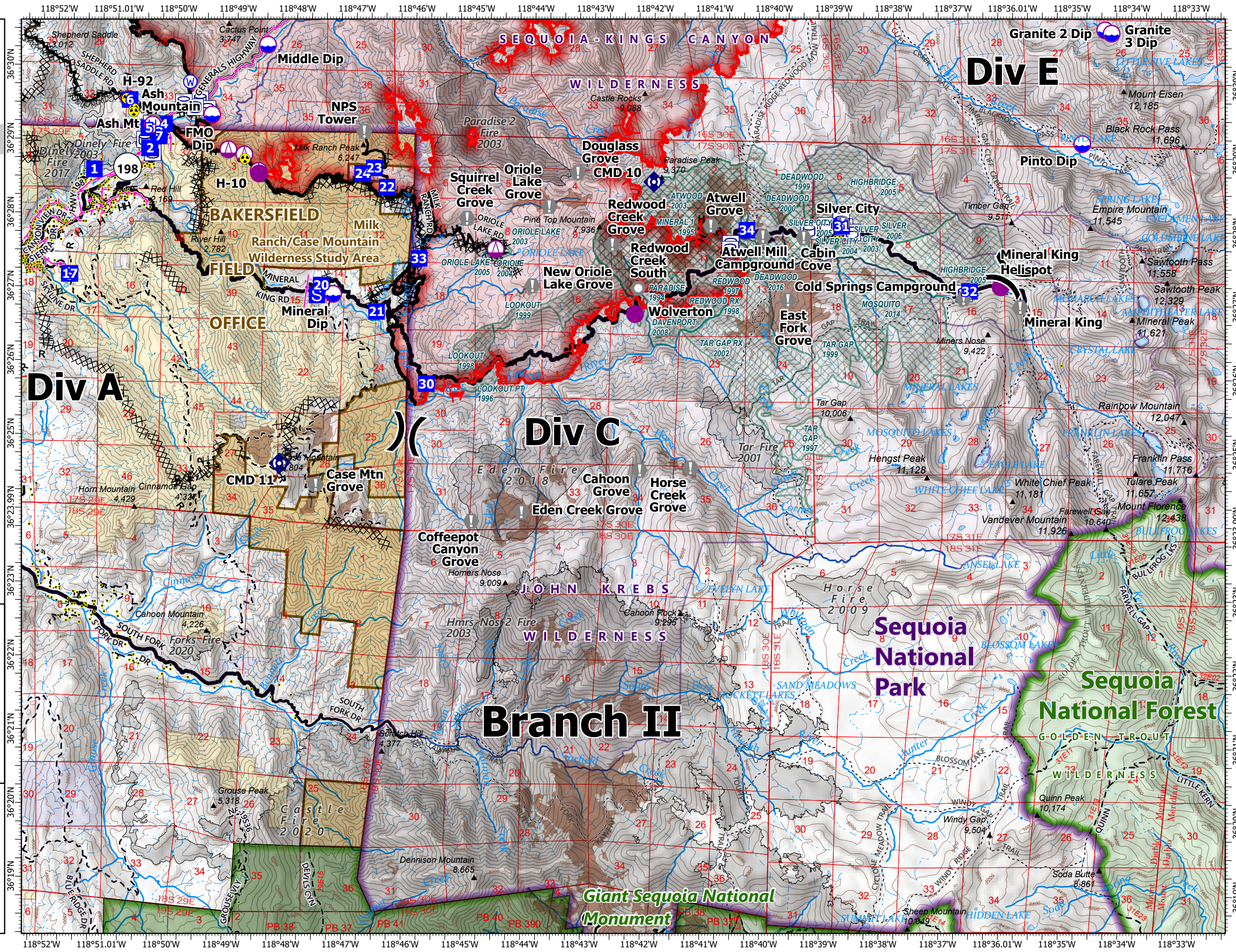
KNP Complex
CA-KNP-000122
10/15/2021

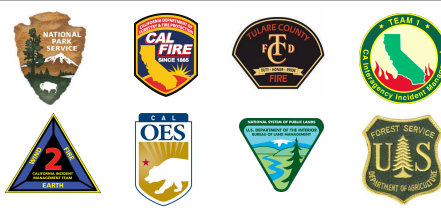
Div C

- Dip Site
- Helispot
- Helibase
- Sling Site
- Division Break
- Drop Point
- Staging Area
- Value at Risk
- Landmark
- Repeater
- Hazard
- Water Source
- Water Tank
- Stream / River
- Structure
- Powerline
- Wildfire Daily Fire Perimeter
- Completed Dozer Line
- Completed Hand Line
- Completed Mixed Construction Line
- Completed Road as Line
- Access or Improved Road
- Other
- Fire Edge
- Contained Line
- Summit, Gap
- County Line
- Major Road
- Minor Road
- Private Road
- Major Roads
- Minor Road
- Unpaved Road
- Trail
- Trail
- Sequoia Groves
- Fire History (>100 Acres)
- Prescribed Fire History
- Gaging Station
- Spring/Sleep
- Nonearthen Shore
- Wash
- Stream/River Intermittent
- Ice Mass
- Lake / Pond
- Lake / Pond (Intermittent)
- Reservoir
- Township
- Protracted Section
- Section
- Giant Sequoia National Monument
- USFS Boundary
- USFS Wilderness
- BLM Wilderness Study Area
- USFS Lands



10/14/2021 2220
 North American 1983 Datum





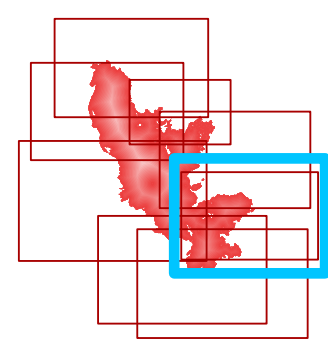
Field Operations

KNP Complex
CA-KNP-000122
10/15/2021

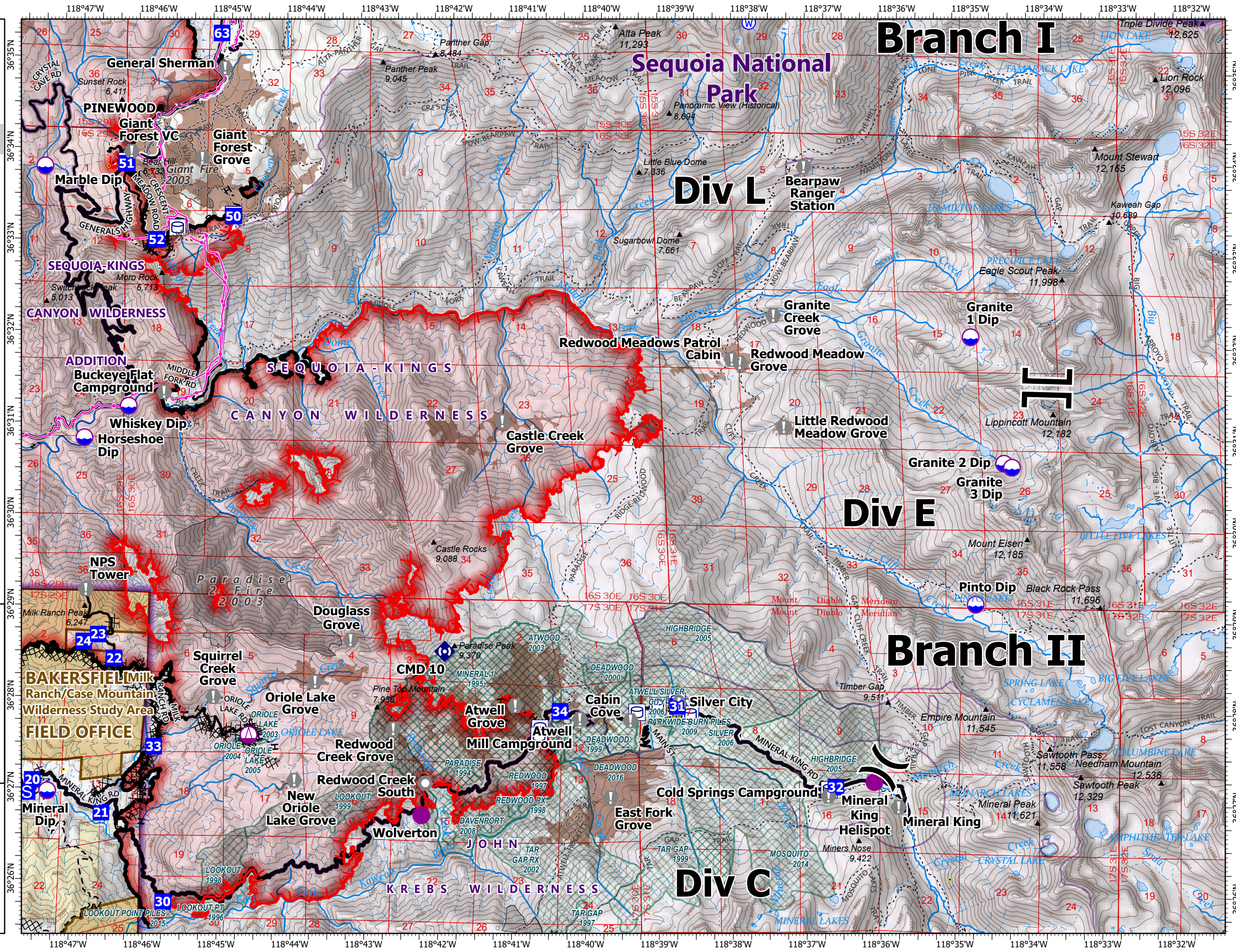
Div E

- Dip Site
- Helispot
- Sling Site
- Division Break
- Branch Break
- Drop Point
- Staging Area
- Value at Risk
- Landmark
- Repeater
- Water Source
- Water Tank
- Structure
- Powerline
- Wildfire Daily Fire
- Perimeter
- Completed Dozer Line
- Completed Hand Line
- Completed Mixed Construction Line
- Completed Road as Line
- Other
- Fire Edge
- Contained Line
- Summit / Gap
- County Line
- Major Road
- Minor Road
- Private Road
- Major Roads
- Minor Road
- Unpaved Road
- Trail
- Sequoia Groves

- Fire History (> 100 Acres)
- Prescribed Fire History
- Gaging Station
- Spring/Seep
- Waterfall
- Dam / Weir
- Stream/River; Artificial Path
- Pipeline
- Stream/River Intermittent
- Ice Mass
- Lake / Pond
- Lake / Pond (Intermittent)
- Township
- Section
- NPS Unit Boundary
- NPS Wilderness
- BLM Wilderness Study Area
- Bureau of Land Management Lands
- 0
- 1
- 2
- 3
- 4
- 5
- 6
- 7
- 8
- 9
- 10
- 11
- 12



10/14/2021 2221
 North American 1983 Datum



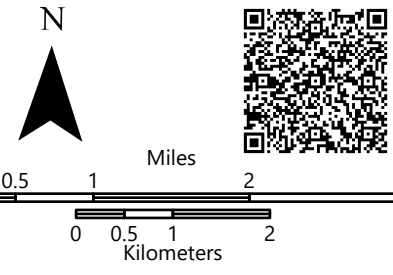
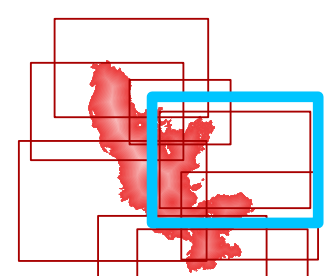


Field Operations

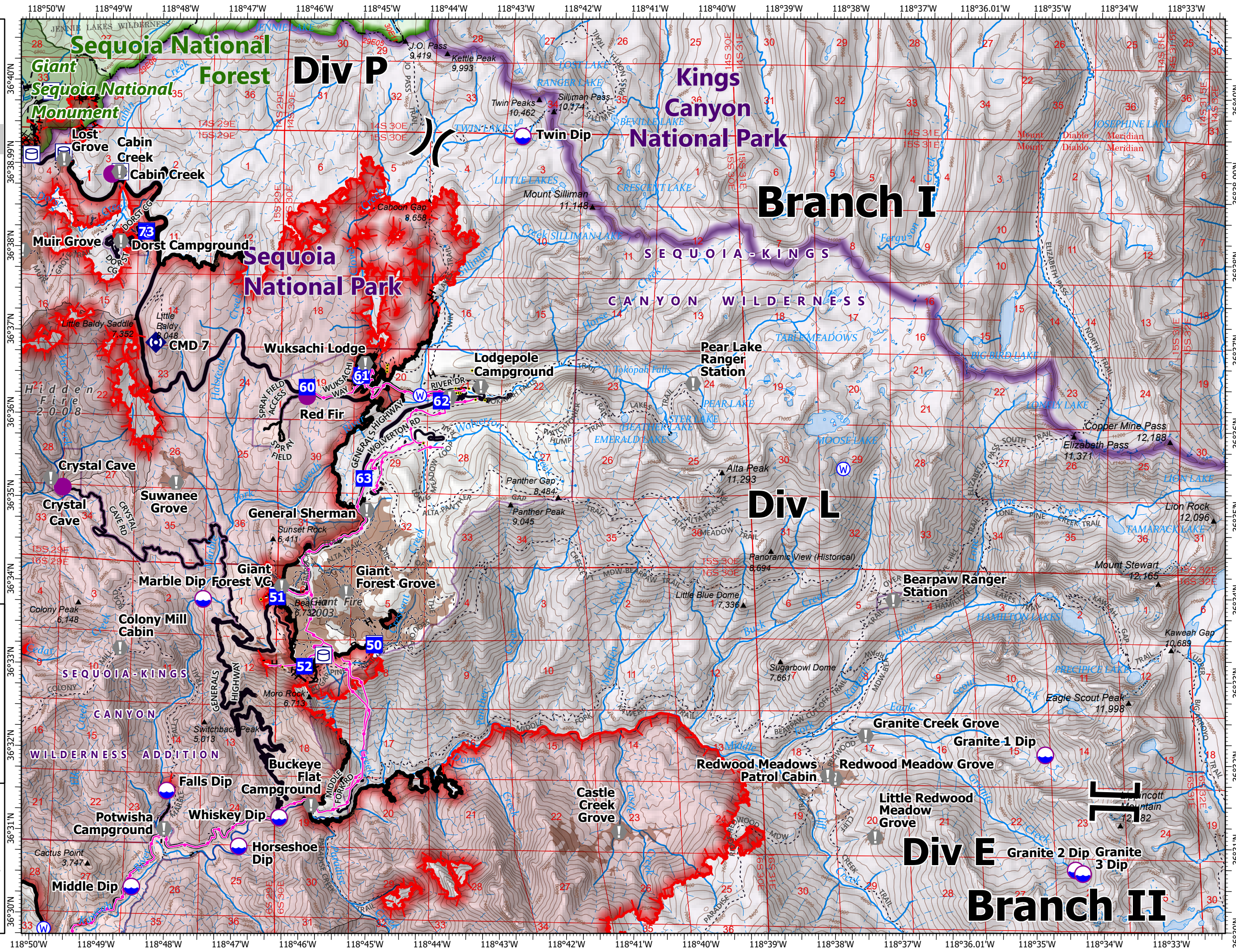
KNP Complex
CA-KNP-000122
10/15/2021

Div L

- Dip Site
- Helispot
- Division Break
- Branch Break
- Drop Point
- Staging Area
- Value at Risk
- Repeater
- Water Source
- Water Tank
- Structure
- Powerline
- Wildfire Daily Fire
- Perimeter
- Completed Dozer Line
- Completed Hand Line
- Completed Mixed Construction Line
- Completed Road as Line
- Access or Improved Road
- Fire Edge
- Contained Line
- Summit; Gap
- County Line
- Major Road
- Minor Road
- Private Road
- Major Roads
- Minor Road
- Unpaved Road
- Trail
- Trail
- Sequoia Groves
- Fire History (>100 Acres)
- Gaging Station
- Spring/Seep
- Waterfall
- Stream / River
- Wash
- Stream/River; Artificial Path
- Pipeline
- Stream/River Intermittent
- Ice Mass
- Lake / Pond
- Lake / Pond (Intermittent)
- Township
- Section
- Giant Sequoia National Monument
- NPS Unit Boundary
- USFS Boundary
- NPS Wilderness
- USFS Wilderness
- USFS Lands



10/14/2021 2221
 North American 1983 Datum



Branch I

Div L

Div E

Branch II

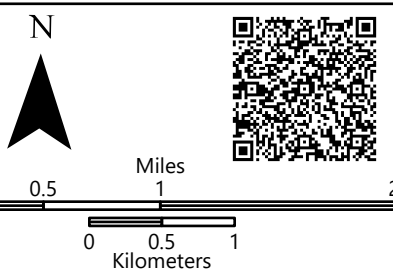
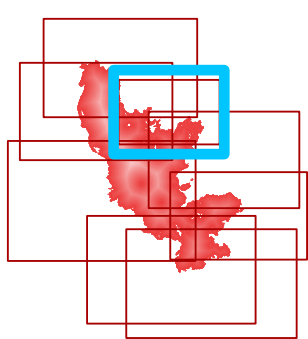


Field Operations

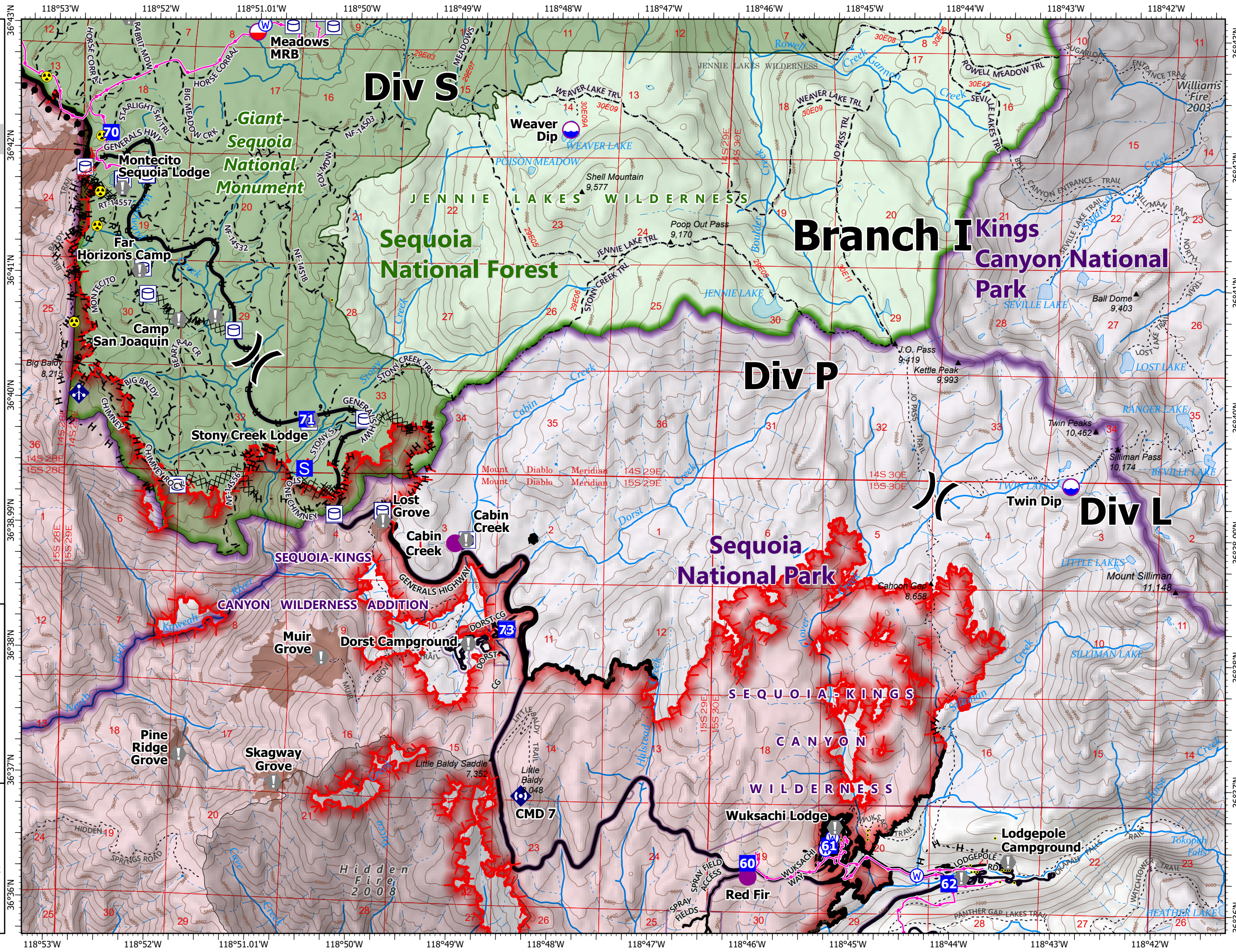
KNP Complex
CA-KNP-000122
10/15/2021

Div P

- Dip Site
- Mobile Retardant Base
- Hellsport
- Division Break
- Drop Point
- Staging Area
- Value at Risk
- Landmark
- Mobile Weather Unit
- Repeater
- Hazard
- Water Source
- Water Tank
- Structure
- Powerline
- Wildfire Daily Fire Perimeter
- Completed Burnout
- Completed Dozer Line
- Completed Hand Line
- Completed Mixed Construction Line
- Completed Road as Line
- Access or Improved Road
- Fire Edge
- Contained Line
- Summit, Gap
- County Line
- Major Road
- Minor Road
- Private Road
- Major Roads
- Minor Road
- Unpaved Road
- Trail
- Sequoia Groves
- Fire History (>100 Acres)
- Gaging Station
- Spring/Seep
- Waterfall
- Stream/River, Artificial Path
- Stream/River Intermittent
- Lake / Pond
- Lake / Pond (Intermittent)
- Township
- Section
- Giant Sequoia National Monument
- NPS Unit Boundary
- USFS Boundary
- NPS Wilderness
- USFS Wilderness
- USFS Lands



10/14/2021 2222
 North American 1983 Datum



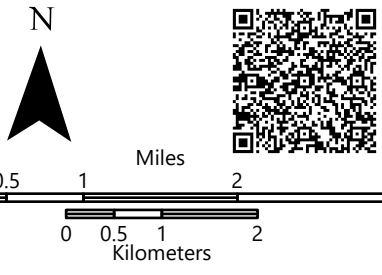
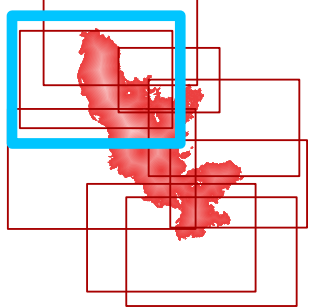


Field Operations

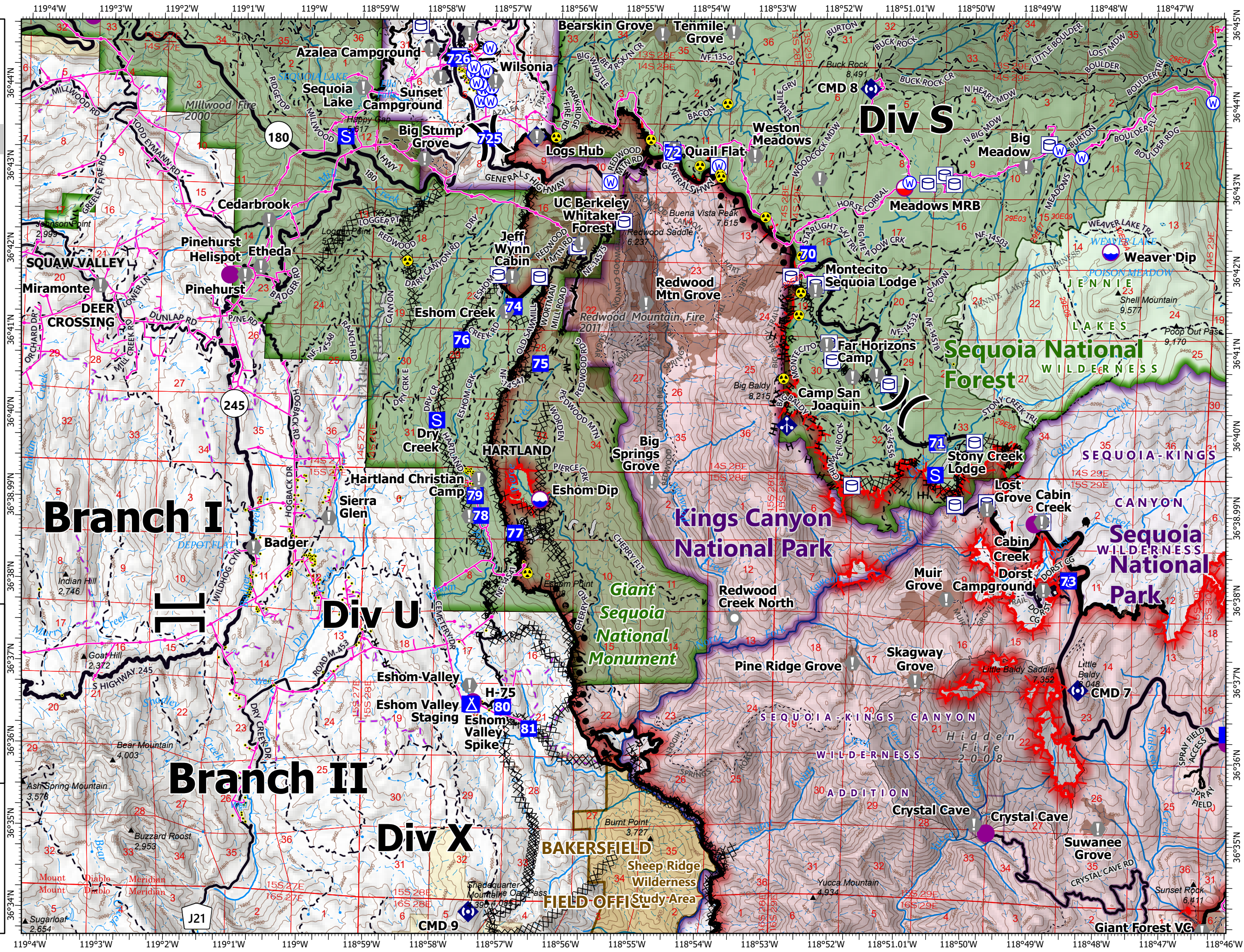
KNP Complex
CA-KNP-00122
10/15/2021

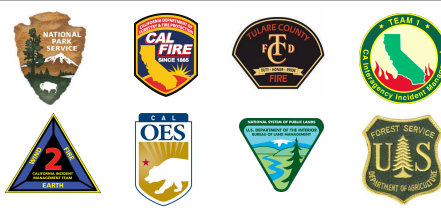
Div U

- Dip Site
- Mobile Retardant Base
- Hellsport
- Division Break
- Branch Break
- Drop Point
- Staging Area
- Value at Risk
- Landmark
- Mobile Weather Unit
- Repeater
- Hazard
- Water Source
- Water Tank
- Structure
- Powerline
- Wildfire Daily Fire
- Perimeter
- Completed Burnout
- Completed Dozer Line
- Completed Hand Line
- Completed Mixed Construction Line
- M Completed Road as Line
- Access or Improved Road
- Fire Edge
- Contained Line
- Summit; Gap
- Census Designated Place
- County Line
- Major Road
- Minor Road
- Private Road
- Unknown Road
- Major Roads
- Major Road
- Minor Road
- Unpaved Road
- Unverified Route
- Trail
- Trail
- Sequoia Groves
- Fire History (>100 Acres)
- Prescribed Fire History
- Spring/Seep
- Waterfall
- Stream/River; Artificial Path
- Stream/River Intermittent
- Lake / Pond
- Lake / Pond (Intermittent)
- Township
- Section
- Giant Sequoia National Monument
- NPS Unit Boundary
- USFS Boundary
- NPS Wilderness
- USFS Wilderness
- BLM Wilderness Study Area
- USFS Lands
- Other State Lands
- Bureau of Land Management Lands
- 0
- 1



10/14/2021 2223
North American 1983 Datum



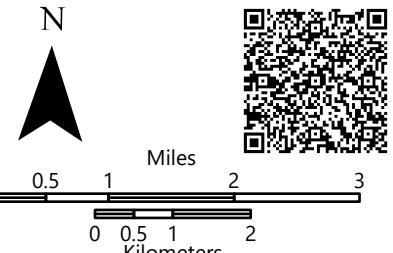
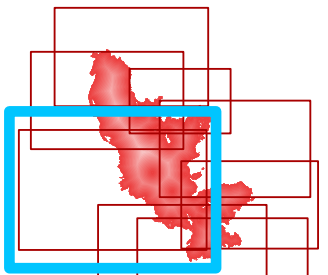


Field Operations

KNP Complex
CA-KNP-000122
10/15/2021

Div X

- Dip Site
- Mobile Retardant Base
- Helispot
- Helibase
- Sling Site
- Division Break
- Branch Break
- Drop Point
- Camp
- Staging Area
- Value at Risk
- Landmark
- Repeater
- Hazard
- Water Source
- Water Tank
- Structure
- Powerline
- Wildfire Daily Fire Perimeter
- Completed Burnout
- Completed Dozer Line
- Completed Hand Line
- Completed Mixed Construction Line
- Completed Road as Line
- Access or Improved Road
- Other
- Fire Edge
- Contained Line
- Summit / Gap
- Incorporated Place
- Census Designated Place
- County Line
- Major Road
- Minor Road
- Private Road
- Major Roads
- Minor Road
- Unpaved Road
- Unverified Route
- Trail
- Sequoia Groves
- Fire History (>100 Acres)
- Fire History (>100 Acres)
- Prescribed Fire History
- Gaging Station
- Spring/Seep
- Waterfall
- Well
- Dam / Weir
- Nonearththen Shore
- Spillway
- Stream / River
- Wash
- Stream/River; Artificial Path
- Canal / Ditch
- Pipeline
- Stream/River Intermittent
- Lake / Pond
- Lake / Pond (Intermittent)
- Reservoir
- Township
- Section
- Giant Sequoia National Monument



10/14/2021 2224
 North American 1983 Datum

