

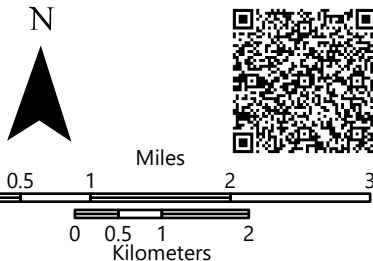
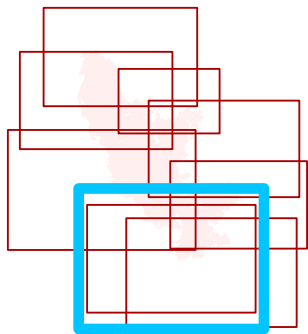


Field Operations

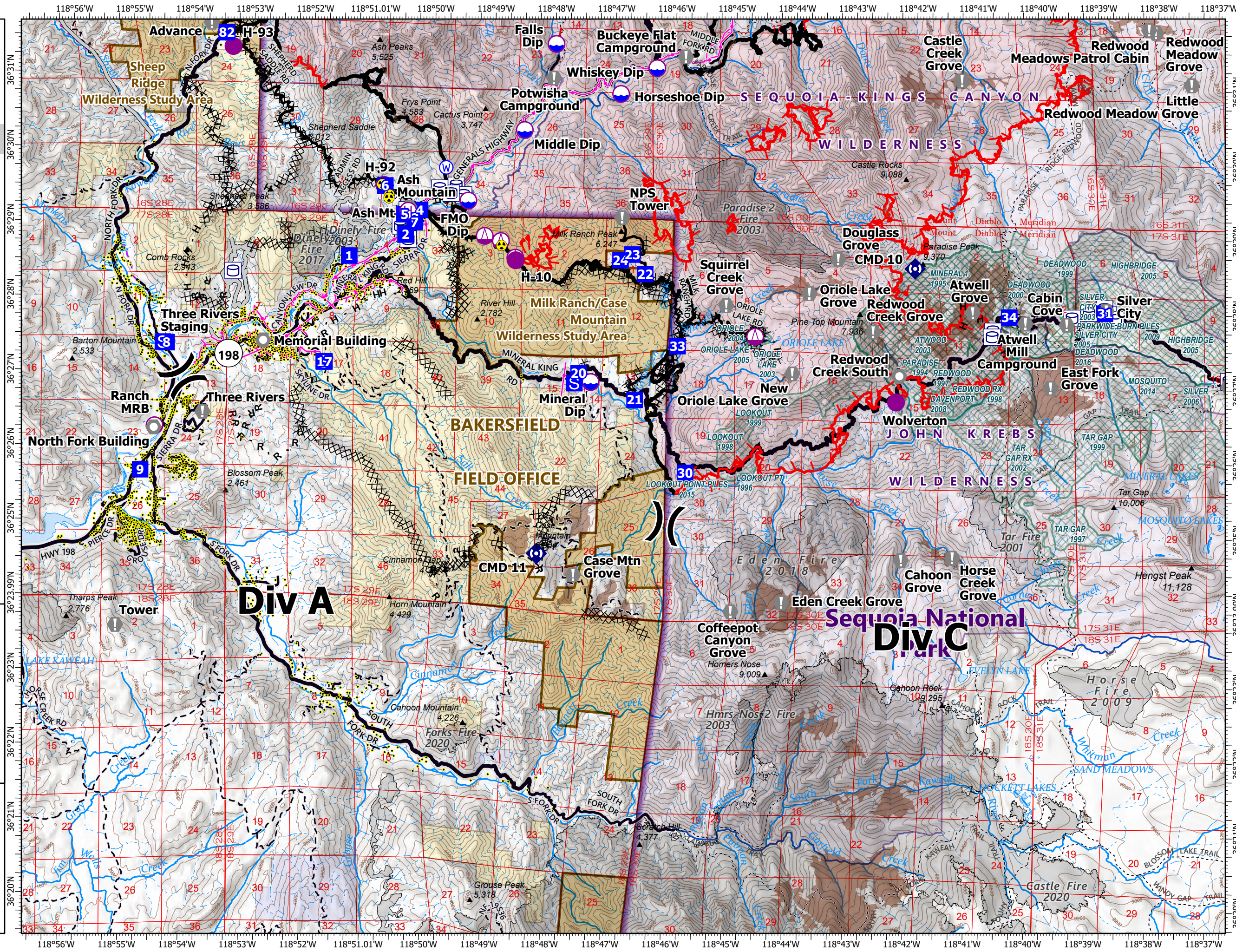
KNP Complex CA-KNP-000122 10/16/2021

Div A

- Dip Site
- Mobile Retardant Base
- Helispot
- Helibase
- Sling Site
- Division Break
- Value at Risk
- Landmark
- Repeater
- Hazard
- Water Source
- Label Point
- Water Tank
- Structure
- Powerline
- Wildfire Daily Fire Perimeter
- Completed Dozer Line
- Completed Hand Line
- Completed Mixed Construction Line
- Completed Road as Line
- Access or Improved Road
- Other
- Fire Edge
- Summit / Gap
- County Line
- Major Road
- Minor Road
- Unpaved Road
- Unverified Route
- Sequoia Groves
- Fire History (>100 Acres)
- Fire History (>100 Acres)
- Prescribed Fire History
- Gaging Station
- Spring/Seep
- Waterfall
- Dam / Weir
- Nonearthen Shore
- Stream/River, Artificial Path
- Pipeline
- Stream/River Intermittent
- NPS Unit Boundary
- NPS Wilderness
- BLM Wilderness Study Area
- State Public Lands
- Bureau of Land Management Lands
- 0
- 1
- 2
- 3
- 4
- 5
- 6
- 7
- 8
- 9
- 10
- 11
- 12



10/15/2021 2239
North American 1983 Datum



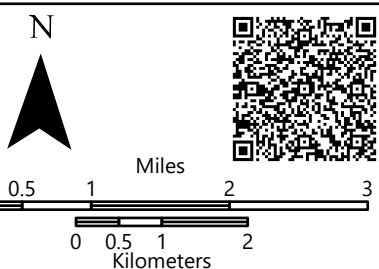
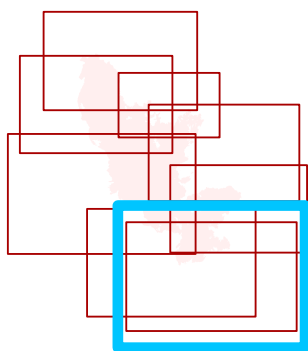


Field Operations

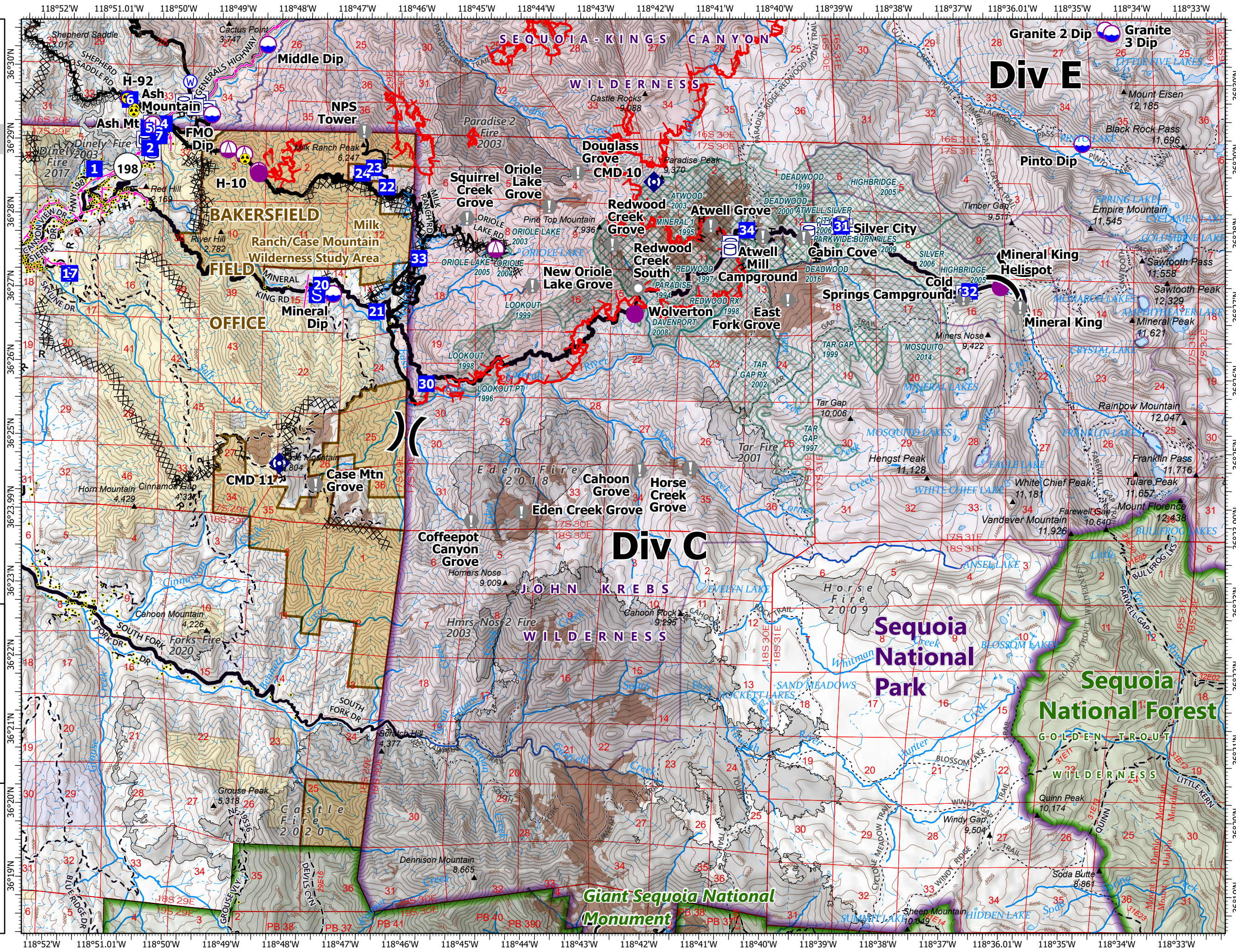
KNP Complex CA-KNP-000122 10/16/2021

Div C

- Dip Site
- Helispot
- Helibase
- Sling Site
- Drop Point
- Staging Area
- Value at Risk
- Landmark
- Repeater
- Hazard
- Water Source
- Label Point
- Water Tank
- Structure
- Powerline
- Wildfire Daily Fire Perimeter
- Completed Dozer Line
- Completed Hand Line
- Completed Mixed Construction Line
- Completed Road as Line
- Access or Improved Road
- Other
- Fire Edge
- Contained Line
- Summit; Gap
- County Line
- Major Road
- Minor Road
- Unpaved Road
- Trail
- Sequoia Groves
- Fire History (>100 Acres)
- Prescribed Fire History
- Gaging Station
- Spring/Seep
- Waterfall
- Dam / Weir
- Nonearthen Shore
- Stream/River; Artificial Path
- Pipeline
- Stream/River Intermittent
- Giant Sequoia National Monument
- USFS Boundary
- NPS Wilderness
- USFS Wilderness
- BLM Wilderness Study Area
- USFS Lands
- State Public Lands
- Bureau of Land Management Lands



10/15/2021 2240
North American 1983 Datum



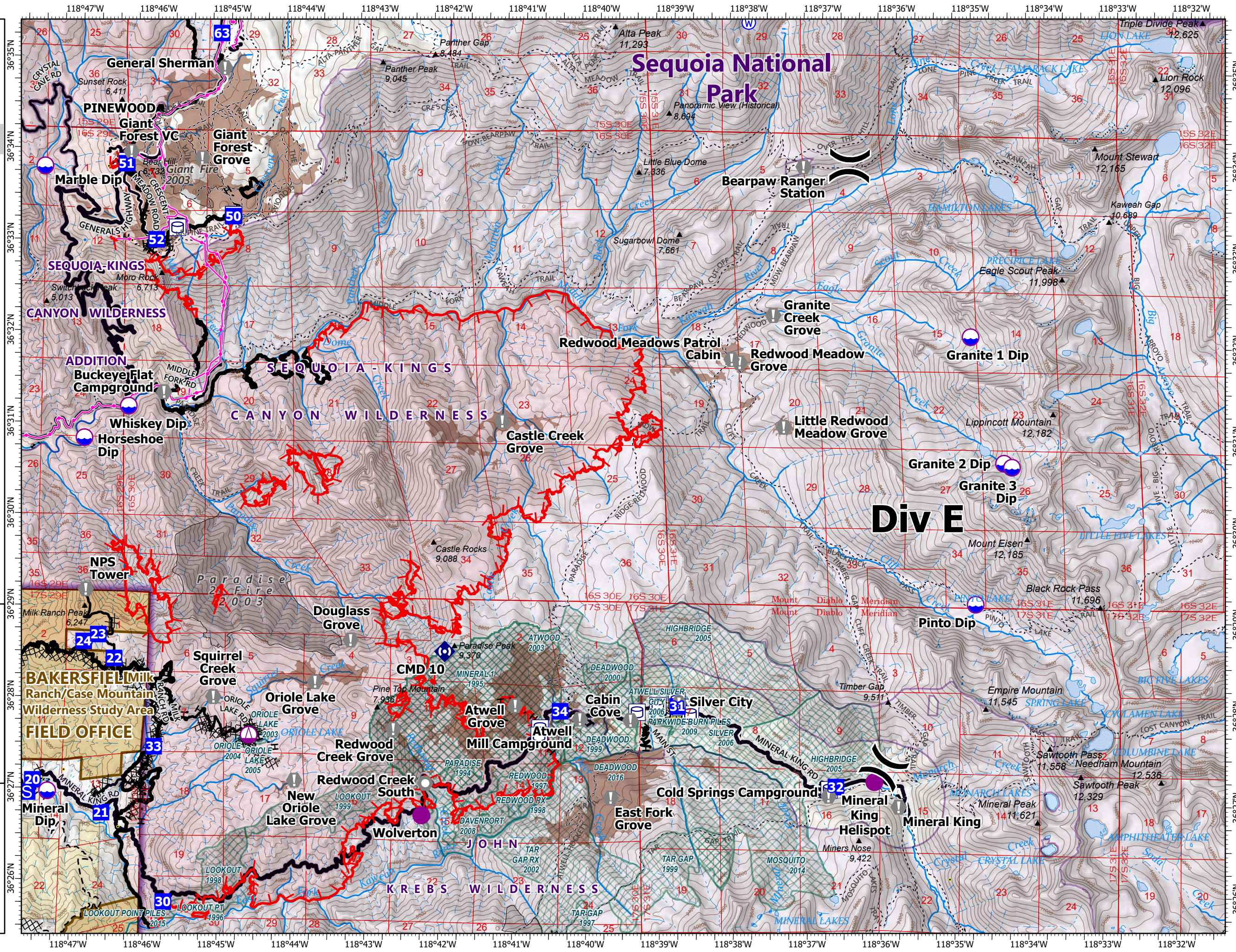


Field Operations

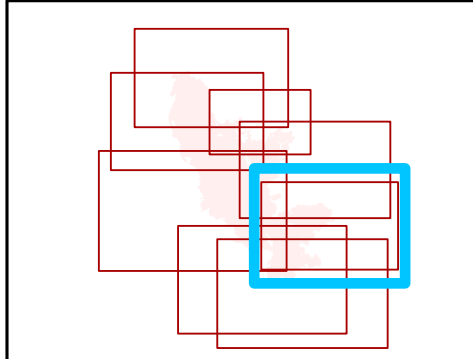
KNP Complex
CA-KNP-000122
10/16/2021

Div E

- | | |
|--|--|
| | |
| | |
| | |
| | |
| | |
| | |
| | |
| | |
| | |
| | |
| | |
| | |
| | |
| | |
| | |
| | |
| | |
| | |
| | |
| | |
| | |



Div E



N

Miles
 0 0.5 1 2

Kilometers
 0 0.5 1

10/15/2021 2241
 North American 1983 Datum

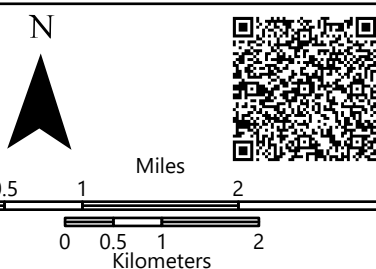
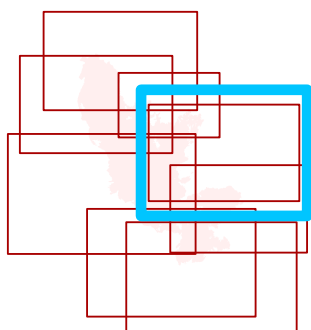


Field Operations

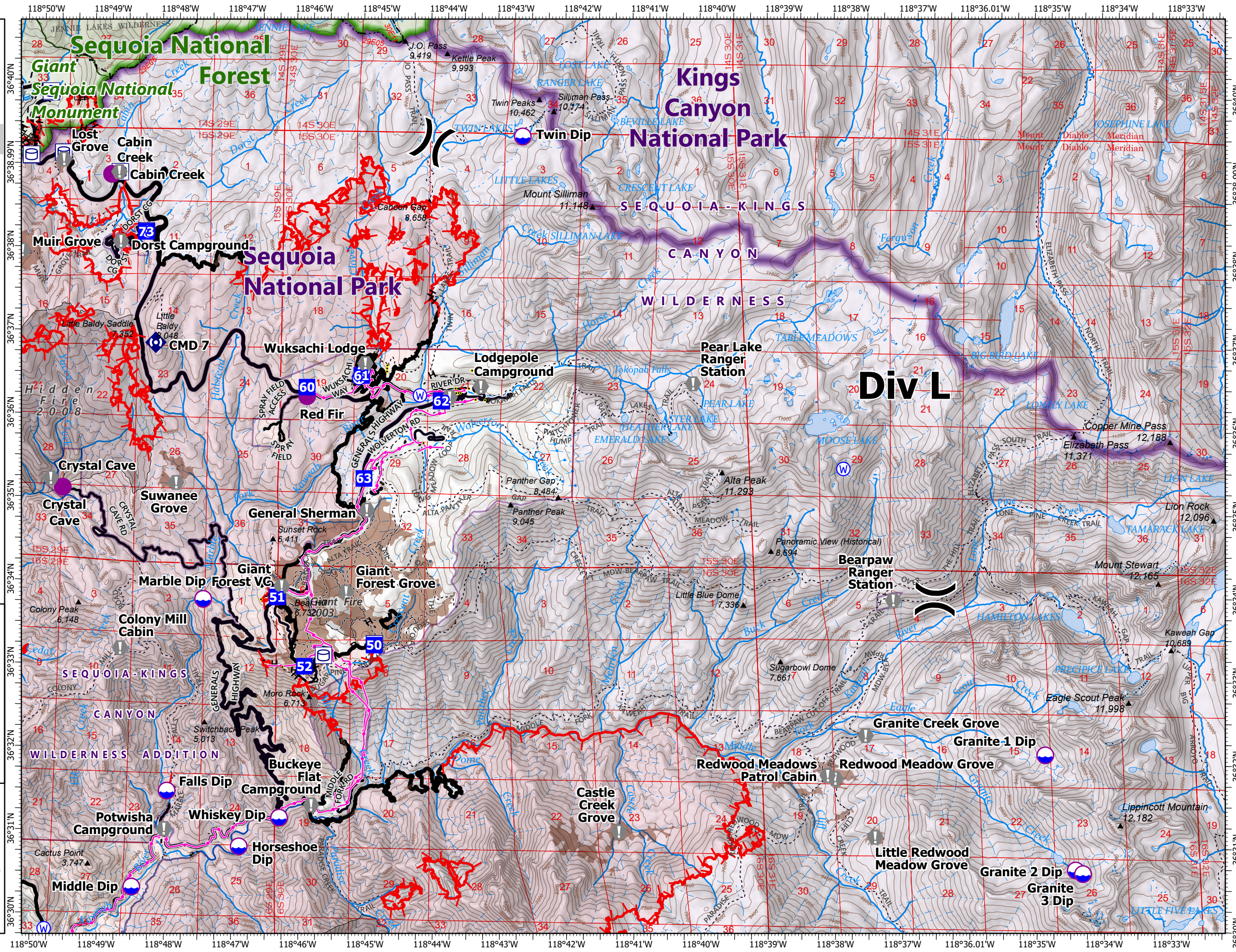
KNP Complex
CA-KNP-000122
10/16/2021

Div L

- Dip Site
- Helispot
- Division Break
- Drop Point
- Staging Area
- Value at Risk
- Repeater
- Water Source
- Label Point
- Water Tank
- Structure
- Powerline
- Wildfire Daily Fire
- Perimeter
- Completed Dozer Line
- Completed Hand Line
- Completed Road as Line
- Fire Edge
- Contained Line
- Summit; Gap
- County Line
- Minor Road
- Unpaved Road
- Trail
- Sequoia Groves
- Fire History (>100 Acres)
- Gaging Station
- Spring/Seep
- Waterfall
- Stream/River; Artificial Path
- Pipeline
- Stream/River Intermittent
- Giant Sequoia National Monument
- NPS Wilderness
- USFS Wilderness
- USFS Lands



10/15/2021 2241
 North American 1983 Datum



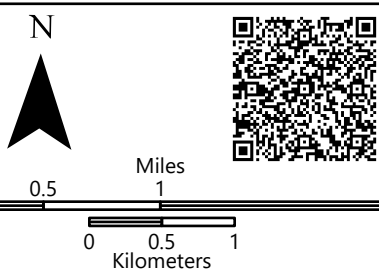
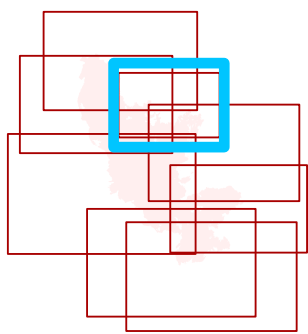


Field Operations

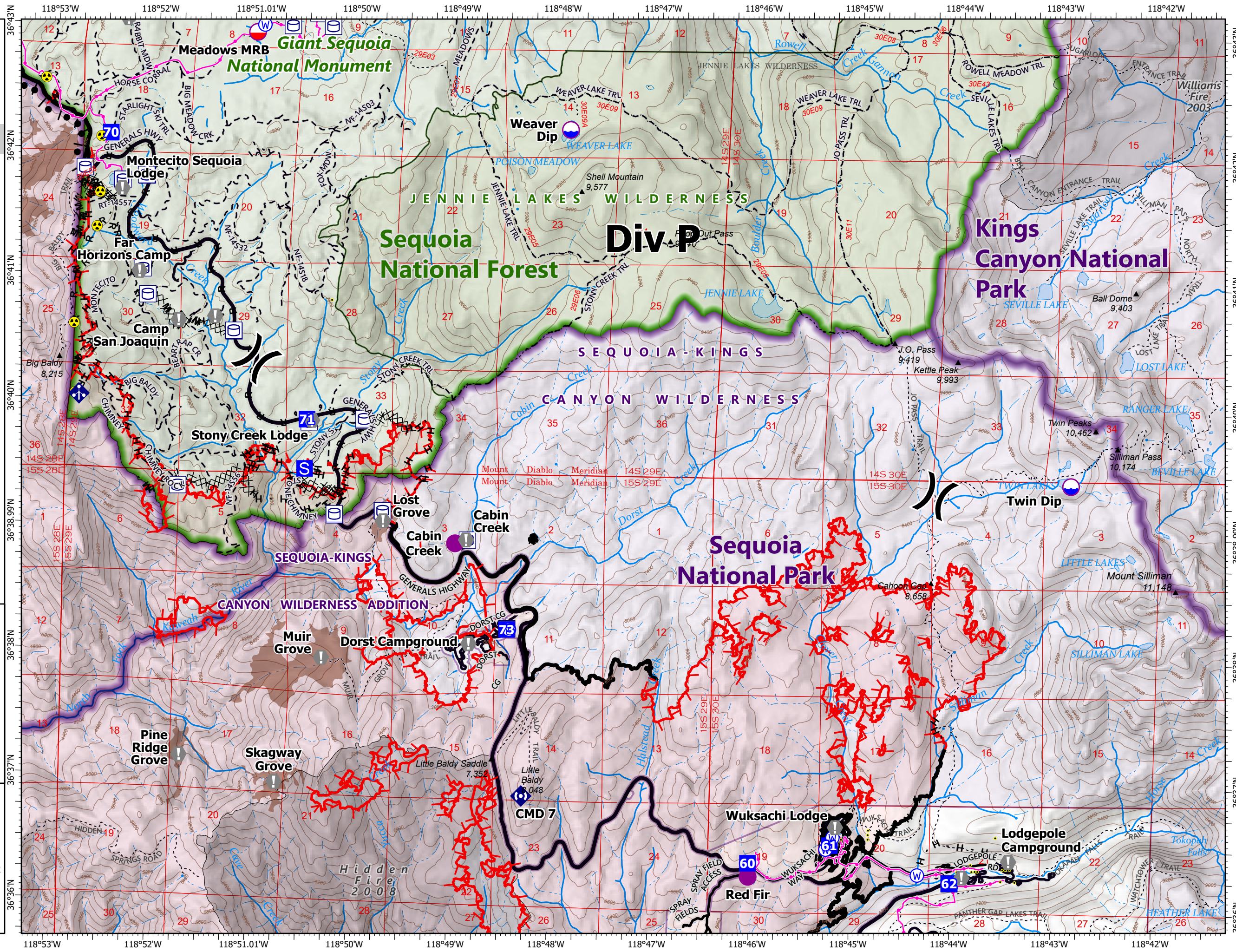
KNP Complex CA-KNP-00122 10/16/2021

Div P

- Dip Site
- Mobile Retardant Base
- Helispot
- Division Break
- Drop Point
- Staging Area
- Value at Risk
- Landmark
- Mobile Weather Unit
- Repeater
- Hazard
- Water Source
- Label Point
- Water Tank
- Structure
- Powerline
- Wildfire Daily Fire Perimeter
- Completed Burnout
- Completed Dozer Line
- Completed Hand Line
- Completed Mixed Construction Line
- Completed Road as Line
- Access or Improved Road
- Fire Edge
- Contained Line
- Summit; Gap
- County Line
- Minor Road
- Unpaved Road
- Trail
- Sequoia Groves
- Fire History (>100 Acres)
- Gaging Station
- Spring/Seep
- Waterfall
- Stream/River; Artificial Path
- Stream/River Intermittent
- Giant Sequoia National Monument
- USFS Boundary
- NPS Wilderness
- USFS Wilderness
- USFS Lands



10/15/2021 2242
North American 1983 Datum



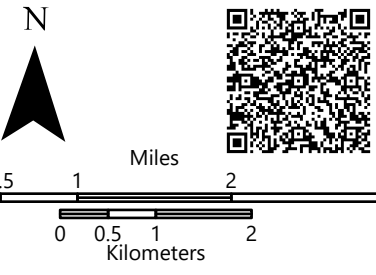
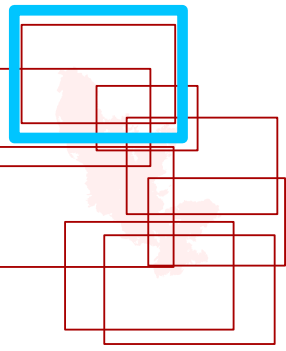


Field Operations

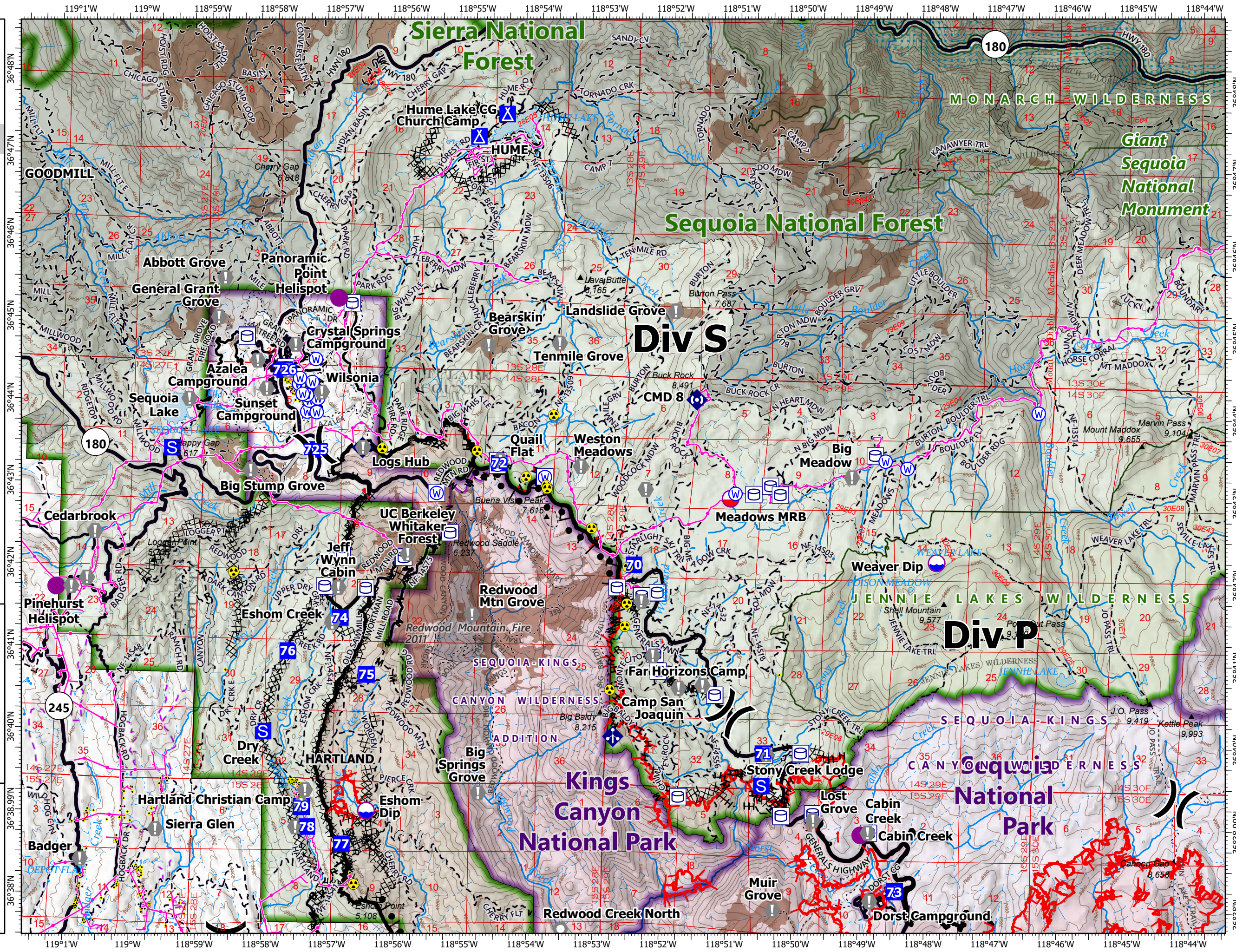
KNP Complex
CA-KNP-000122
10/16/2021

Div S

- Dip Site
- Mobile Retardant Base
- Helispot
- Division Break
- Drop Point
- Camp
- Staging Area
- Value at Risk
- Landmark
- Mobile Weather Unit
- Repeater
- Hazard
- Water Source
- Label Point
- Water Tank
- Structure
- Powerline
- Wildfire Daily Fire Perimeter
- Completed Burnout
- Completed Dozer Line
- Completed Hand Line
- Completed Mixed Construction Line
- Completed Road as Line
- Access or Improved Road
- Fire Edge
- Contained Line
- Summit; Gap
- Census Designated Place
- County Line
- Major Road
- Minor Road
- Unpaved Road
- Unverified Route
- Trail
- Sequoia Groves
- Fire History (>100 Acres)
- Prescribed Fire History
- Spring/Seep
- Waterfall
- Stream/River; Artificial Path
- Stream/River Intermittent
- NPS Unit Boundary
- USFS Boundary
- NPS Wilderness
- USFS Wilderness
- Wild and Scenic River
- USFS Lands
- Other State Lands



10/15/2021 2243
 North American 1983 Datum



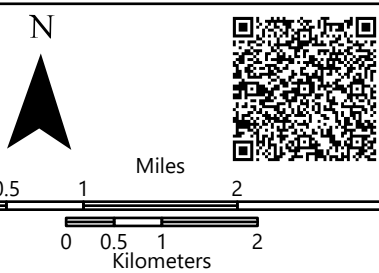
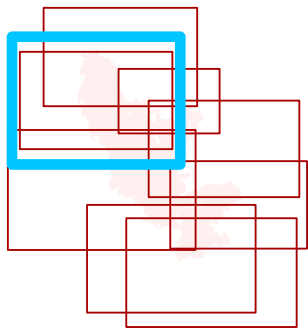


Field Operations

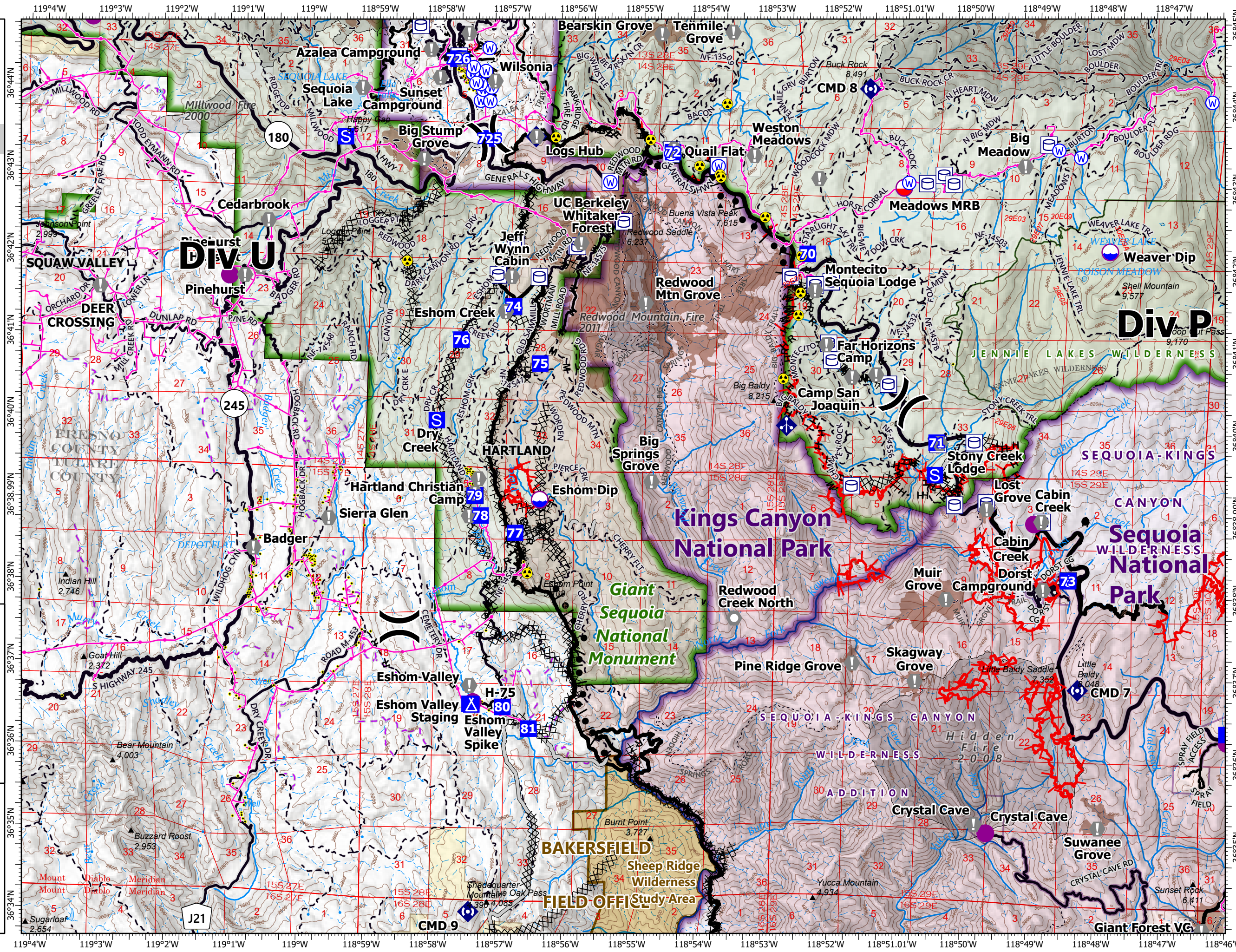
KNP Complex
CA-KNP-00122
10/16/2021

Div U

- Dip Site
- Mobile Retardant Base
- Helispot
- Division Break
- Drop Point
- Camp
- Staging Area
- Value at Risk
- Landmark
- Mobile Weather Unit
- Repeater
- Hazard
- Water Source
- Label Point
- Water Tank
- Structure
- Powerline
- Wildfire Daily Fire Perimeter
- Completed Burnout
- Completed Dozer Line
- Completed Hand Line
- Completed Mixed Construction Line
- Completed Road as Line
- Access or Improved Road
- Fire Edge
- Contained Line
- Summit; Gap
- Census Designated Place
- County Line
- Major Road
- Minor Road
- Unpaved Road
- Unverified Route
- Trail
- Trail
- Sequoia Groves
- Fire History (>100 Acres)
- Prescribed Fire History
- Spring/Seep
- Waterfall
- Well
- Stream/River; Artificial Path
- Stream/River Intermittent
- Giant Sequoia National Monument
- NPS Unit Boundary
- USFS Boundary
- NPS Wilderness
- USFS Wilderness
- BLM Wilderness Study Area
- USFS Lands
- Other State Lands
- Bureau of Land Management Lands



10/15/2021 2244
North American 1983 Datum



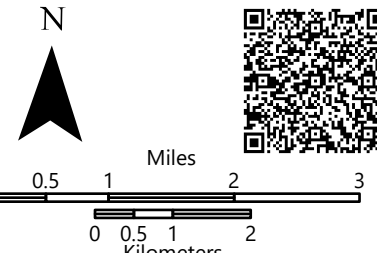
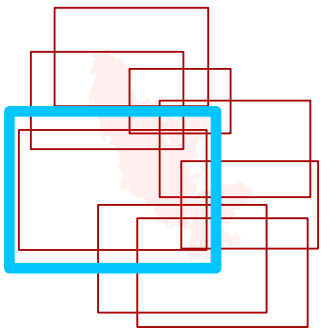


Field Operations

KNP Complex CA-KNP-000122 10/16/2021

Div X

- Dip Site
- Mobile Retardant Base
- Hellsport
- Helibase
- Sling Site
- Division Break
- Drop Point
- Camp
- Staging Area
- Value at Risk
- Landmark
- Repeater
- Hazard
- Water Source
- Label Point
- Water Tank
- Structure
- Wildfire Daily Fire Perimeter
- Completed Burnout
- Completed Dozer Line
- Completed Hand Line
- Completed Mixed Construction Line
- Completed Road as Line
- Access or Improved Road
- Other
- Fire Edge
- Contained Line
- Summit, Gap
- Incorporated Place
- Census Designated Place
- County Line
- Major Road
- Minor Road
- Unpaved Road
- Unverified Route
- Trail
- Sequoia Groves
- Fire History (>100 Acres)
- Prescribed Fire History
- Gaging Station
- Spring/Seep
- Waterfall
- Well
- Dam / Weir
- Nonearthen Shore
- Stream/River, Artificial Path
- Stream/River Intermittent
- Pipeline
- Canal / Ditch
- Giant Sequoia National Monument
- NPS Unit Boundary
- USFS Boundary
- NPS Wilderness
- BLM Wilderness Study Area
- USFS Lands
- Bureau of Land Management Lands
- Summit, 0
- Summit, 1
- Summit, 2
- Summit, 3
- Summit, 4



10/15/2021 2244
North American 1983 Datum

