



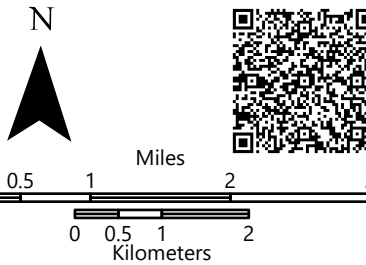
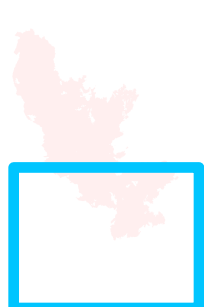
Field Operations

KNP Complex CA-KNP-000122 10/17/2021

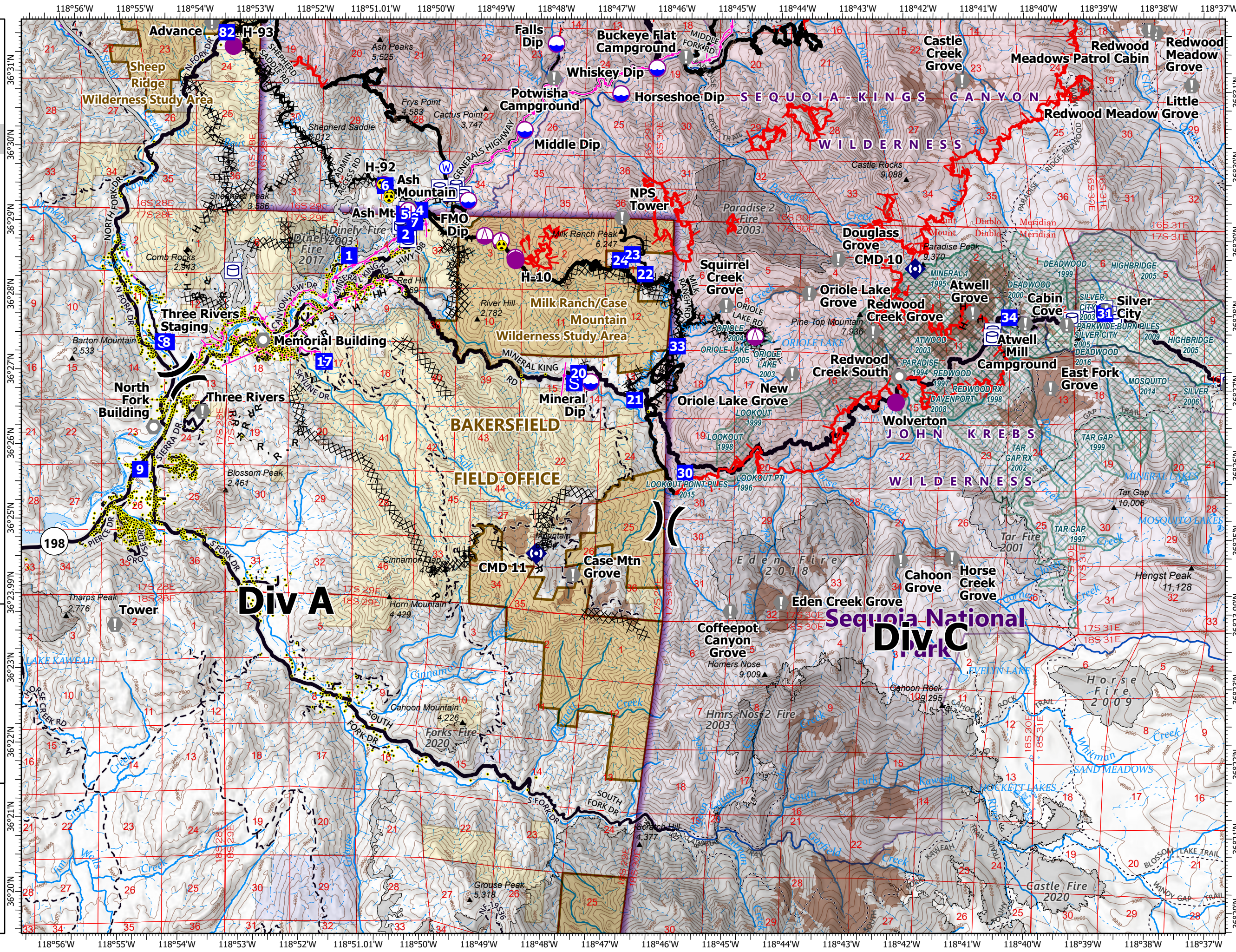
Div A

- Dip Site
- Helispot
- Helibase
- Sling Site
- Division Break
- Drop Point
- Staging Area
- Value at Risk
- Landmark
- Repeater
- Hazard
- Water Source
- Label Point
- Water Tank
- Structure
- Powerline
- Wildfire Daily Fire Perimeter
- Completed Dozer Line
- Completed Hand Line
- Completed Mixed Construction Line
- Completed Road as Line
- Access or Improved Road
- Fire Edge
- Contained Line
- Summit, Gap
- County Line
- Major Road
- Minor Road
- Unpaved Road
- Unverified Route
- Trail
- Sequoia Groves

- Fire History (>100 Acres)
- Prescribed Fire History
- Gaging Station
- Spring/Seep
- Waterfall
- Dam / Weir
- Nonearthen Shore
- Path
- Pipeline
- Stream/River Intermittent
- NPS Unit Boundary
- NPS Wilderness
- BLM Wilderness Study Area
- State Public Lands
- Bureau of Land Management Lands



10/16/2021 2109
North American 1983 Datum



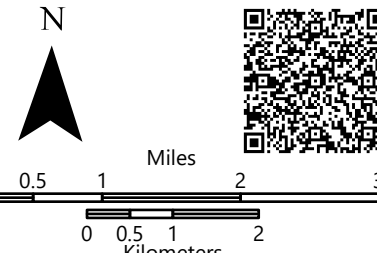


Field Operations

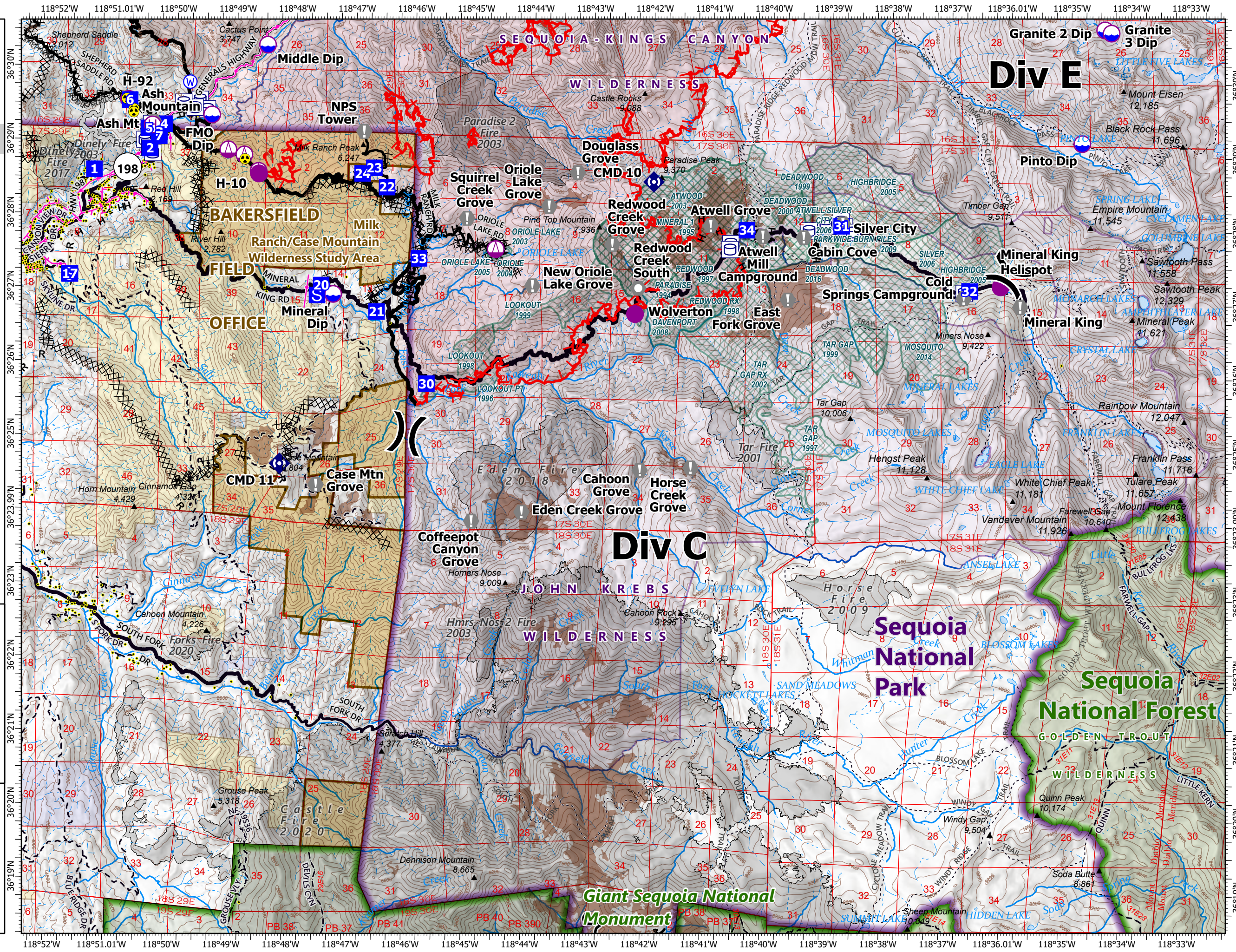
KNP Complex CA-KNP-000122 10/17/2021

Div C

- Dip Site
- Helispot
- Helibase
- Sling Site
- Division Break
- Drop Point
- Staging Area
- Value at Risk
- Landmark
- Repeater
- Hazard
- Water Source
- Label Point
- Water Tank
- Structure
- Powerline
- Wildfire Daily Fire Perimeter
- Completed Dozer Line
- Completed Hand Line
- Completed Mixed Construction Line
- Completed Road as Line
- Access or Improved Road
- Fire Edge
- Contained Line
- Summit, Gap
- County Line
- Major Road
- Minor Road
- Unpaved Road
- Trail
- Sequoia Groves
- Fire History (>100 Acres)
- Prescribed Fire History
- Gaging Station
- Spring/Seep
- Waterfall
- Dam / Weir
- Nonearthen Shore
- Stream/River, Artificial Path
- Stream/River Intermittent
- Giant Sequoia National Monument
- NPS Unit Boundary
- USFS Boundary
- NPS Wilderness
- USFS Wilderness
- BLM Wilderness Study Area
- USFS Lands
- State Public Lands
- Bureau of Land Management Lands



10/16/2021 2:10
North American 1983 Datum





Field Operations

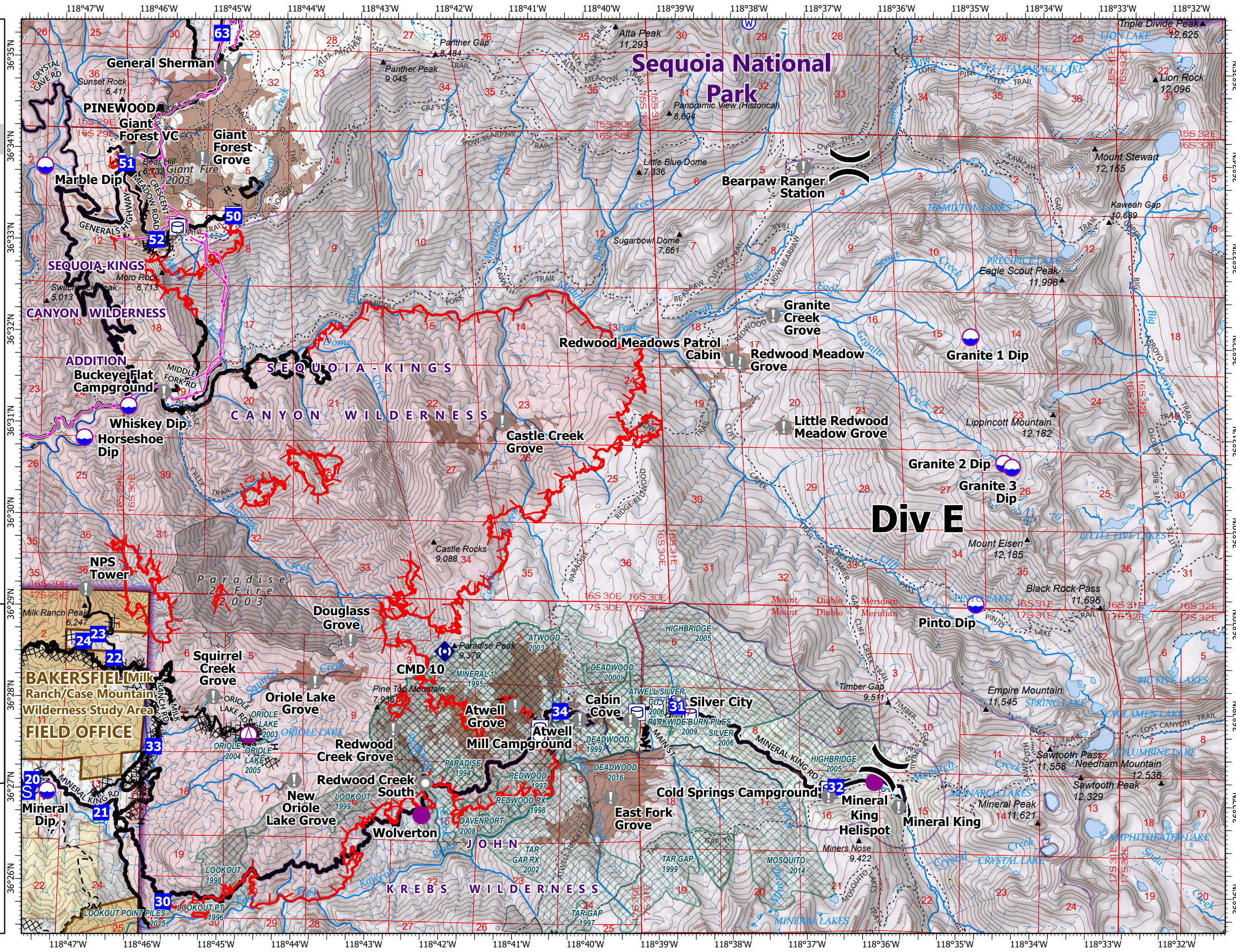
KNP Complex CA-KNP-000122 10/17/2021

Div E

- Dip Site
- Helispot
- Sling Site
- Division Break
- Drop Point
- Staging Area
- Value at Risk
- Landmark
- Repeater
- Water Source
- Label Point
- Water Tank
- Structure
- Powerline
- Wildfire Daily Fire Perimeter
- Completed Dozer Line
- Completed Hand Line
- Completed Mixed Construction Line
- Completed Road as Line
- Fire Edge
- Contained Line
- Summit; Gap
- County Line
- Minor Road
- Unpaved Road
- Trail
- Sequoia Groves
- Fire History (>100 Acres)
- Prescribed Fire History
- Gaging Station
- Spring/Seep
- Waterfall
- Dam / Weir
- Stream/River; Artificial Path
- Pipeline
- Stream/River Intermittent
- NPS Unit Boundary
- NPS Wilderness
- BLM Wilderness Study Area
- Bureau of Land Management Lands



10/16/2021 2111
North American 1983 Datum



Div E



Field Operations

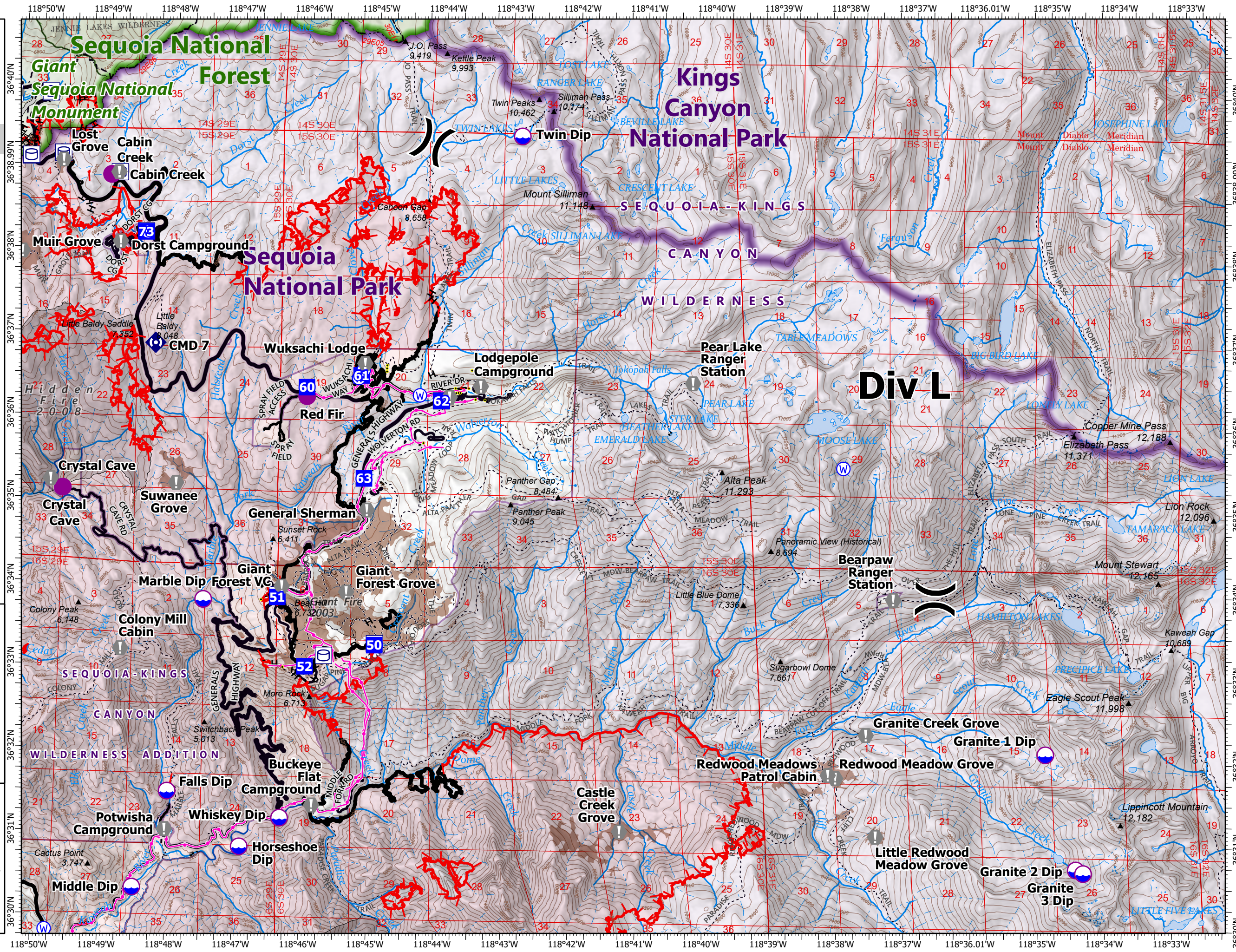
KNP Complex CA-KNP-000122 10/17/2021

Div L

- Dip Site
- Helispot
- Division Break
- Drop Point
- Staging Area
- Value at Risk
- Repeater
- Water Source
- Label Point
- Water Tank
- Structure
- Powerline
- Wildfire Daily Fire Perimeter
- Completed Dozer Line
- Completed Hand Line
- Completed Road as Line
- Access or Improved Road
- Fire Edge
- Contained Line
- Summit; Gap
- County Line
- Minor Road
- Unpaved Road
- Trail
- Trail
- Sequoia Groves
- Fire History (>100 Acres)
- Gaging Station
- Spring/Seep
- Waterfall
- Stream/River; Artificial Path
- Pipeline
- Stream/River Intermittent
- Giant Sequoia National Monument
- NPS Unit Boundary
- USFS Boundary
- NPS Wilderness
- USFS Wilderness
- USFS Lands



10/16/2021 2112
North American 1983 Datum



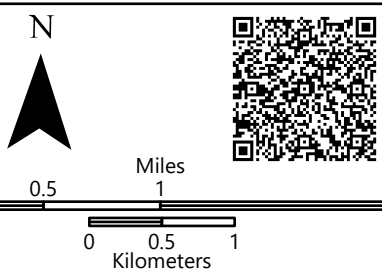


Field Operations

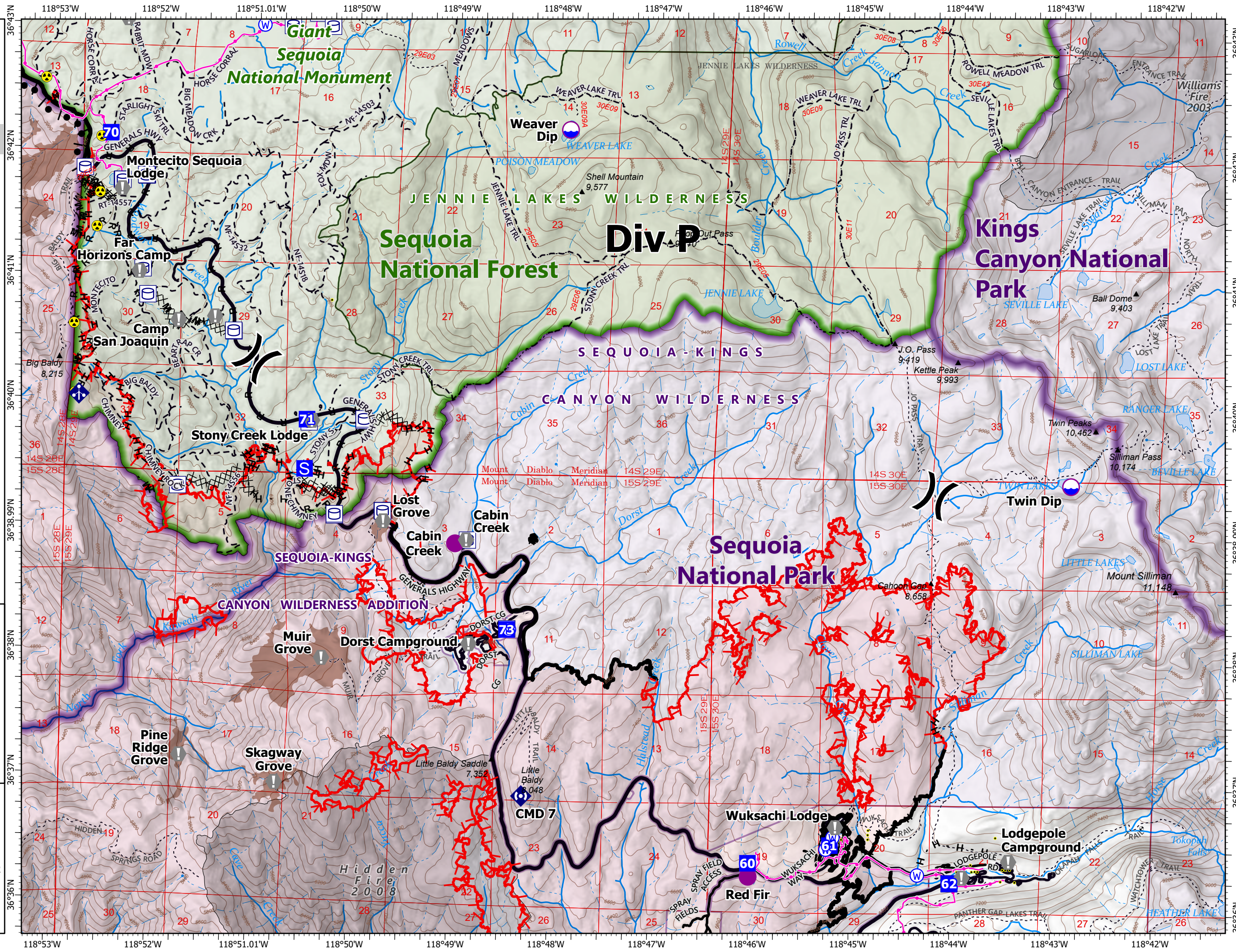
KNP Complex
CA-KNP-00122
10/17/2021

Div P

- Dip Site
- Helispot
- Division Break
- Drop Point
- Staging Area
- Value at Risk
- Landmark
- Mobile Weather Unit
- Repeater
- Hazard
- Water Source
- Label Point
- Water Tank
- Structure
- Powerline
- Wildfire Daily Fire Perimeter
- Completed Burnout
- Completed Dozer Line
- Completed Hand Line
- Completed Mixed Construction Line
- Completed Road as Line
- Access or Improved Road
- Fire Edge
- Contained Line
- Summit; Gap
- County Line
- Minor Road
- Unpaved Road
- Trail
- Trail
- Sequoia Groves
- Fire History (>100 Acres)
- Gaging Station
- Spring/Seep
- Waterfall
- Stream/River; Artificial Path
- Stream/River Intermittent
- Giant Sequoia National Monument
- NPS Unit Boundary
- USFS Boundary
- NPS Wilderness
- USFS Wilderness
- USFS Lands



10/16/2021 2112
North American 1983 Datum



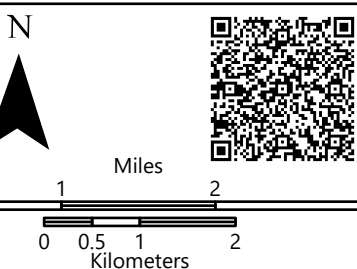


Field Operations

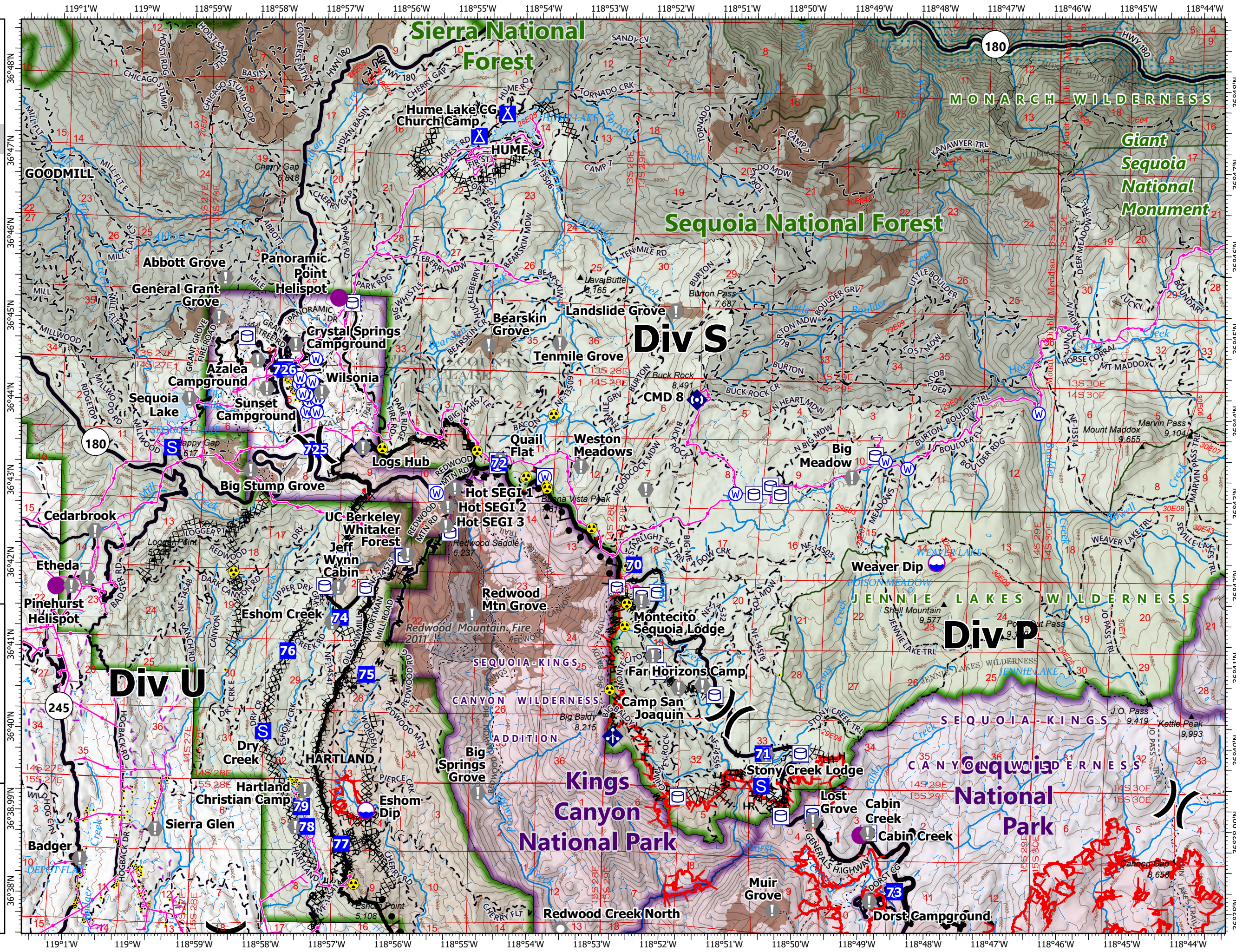
KNP Complex
CA-KNP-000122
10/17/2021

Div S

- | | |
|-------------------------------------|-----------------------------------|
| ● Dip Site | ▲ Summit; Gap |
| ● Helispot | ▭ Census Designated Place |
| ⋈ Division Break | ▭ County Line |
| ■ Drop Point | ▬ Major Road |
| ■ Camp | ▬ Minor Road |
| ■ Staging Area | ▬ Unpaved Road |
| ● Value at Risk | ▬ Unverified Route |
| ○ Landmark | ▬ Trail |
| ◆ Mobile Weather Unit | ▬ Trail |
| ◆ Repeater | ▭ Sequoia Groves |
| ◆ Hazard | ▭ Fire History (>100 Acres) |
| ○ Water Source | ▭ Prescribed Fire History |
| ○ Label Point | ● Spring/Seep |
| ○ Water Tank | ▬ Waterfall |
| ● Structure | ▬ Stream/River; Artificial Path |
| ▬ Powerline | ▬ Stream/River Intermittent |
| ▬ Wildfire Daily Fire Perimeter | ▭ Giant Sequoia National Monument |
| ▬ Completed Burnout | ▭ NPS Unit Boundary |
| ▬ Completed Dozer Line | ▭ USFS Boundary |
| H Completed Hand Line | ▭ NPS Wilderness |
| M Completed Mixed Construction Line | ▭ USFS Wilderness |
| R Completed Road as Line | ▭ Wild and Scenic River |
| ▬ Access or Improved Road | ▭ USFS Lands |
| ▬ Fire Edge | ▭ Other State Lands |
| ▬ Contained Line | |



10/16/2021 2113
 North American 1983 Datum





Field Operations

KNP Complex
CA-KNP-00122
10/17/2021

Div U

- Dip Site
- Helispot
- Division Break
- Drop Point
- Camp
- Staging Area
- Value at Risk
- Landmark
- Mobile Weather Unit
- Repeater
- Hazard
- Water Source
- Label Point
- Water Tank
- Structure
- Powerline
- Wildfire Daily Fire Perimeter
- Completed Burnout
- Completed Dozer Line
- Completed Hand Line
- Completed Mixed Construction Line
- Completed Road as Line
- Access or Improved Road
- Fire Edge
- Contained Line
- Summit; Gap
- Census Designated Place
- County Line
- Major Road
- Minor Road
- Unpaved Road
- Unverified Route
- Trail
- Trail
- Sequoia Groves
- Fire History (> 100 Acres)
- Prescribed Fire History
- Spring/Seep
- Waterfall
- Stream/River; Artificial Path
- Stream/River Intermittent
- Giant Sequoia National Monument
- NPS Unit Boundary
- USFS Boundary
- NPS Wilderness
- USFS Wilderness
- BLM Wilderness Study Area
- USFS Lands
- Other State Lands
- Bureau of Land Management Lands
- 0
- 1
- 2
- 3
- 4
- 5
- 6
- 7
- 8
- 9
- 10
- 11

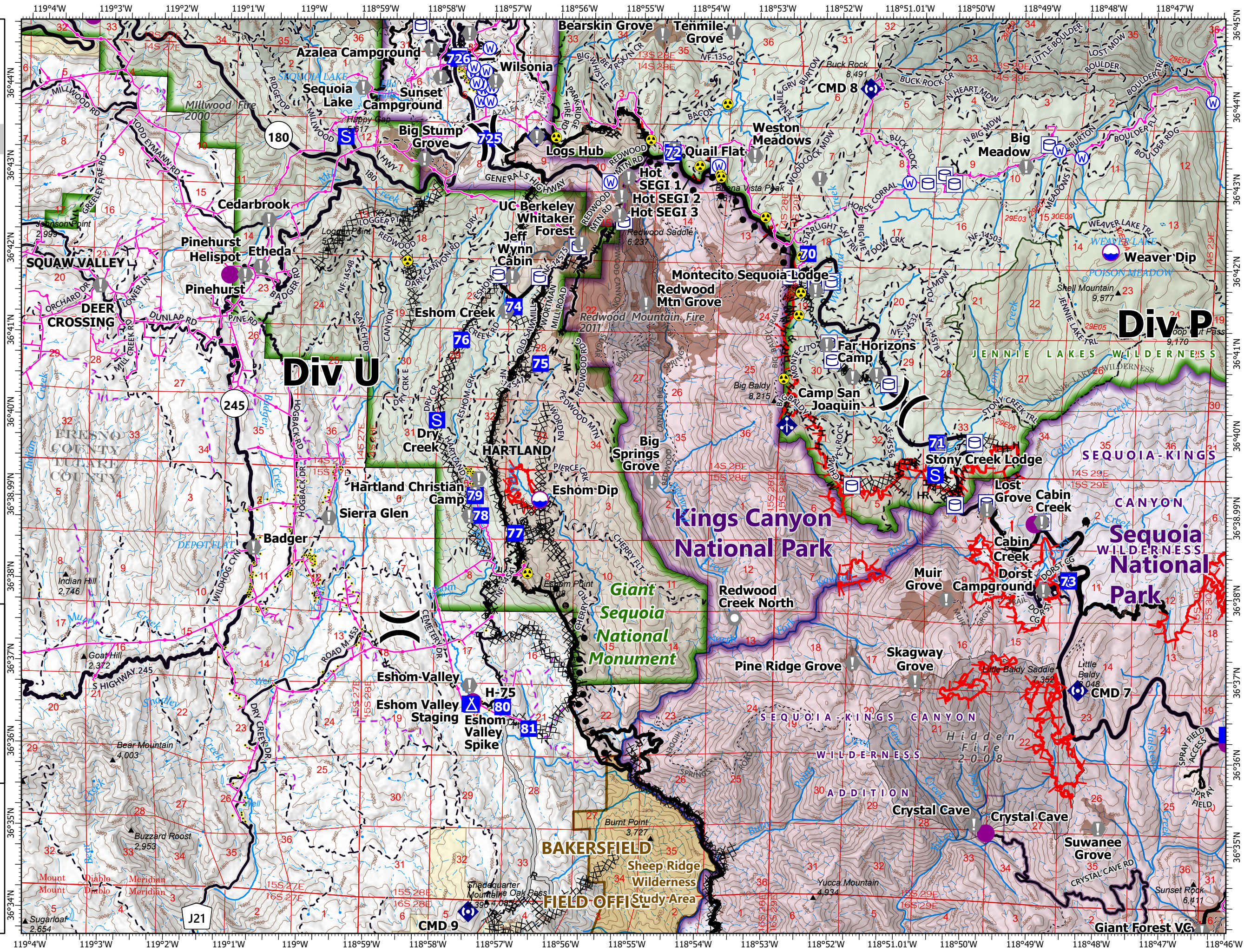


N

Miles
0 0.5 1 2 3

Kilometers
0 0.5 1 2

10/16/2021 2114
North American 1983 Datum



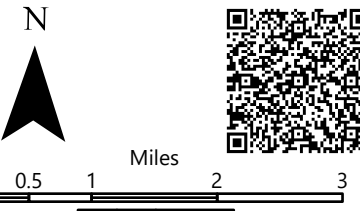


Field Operations

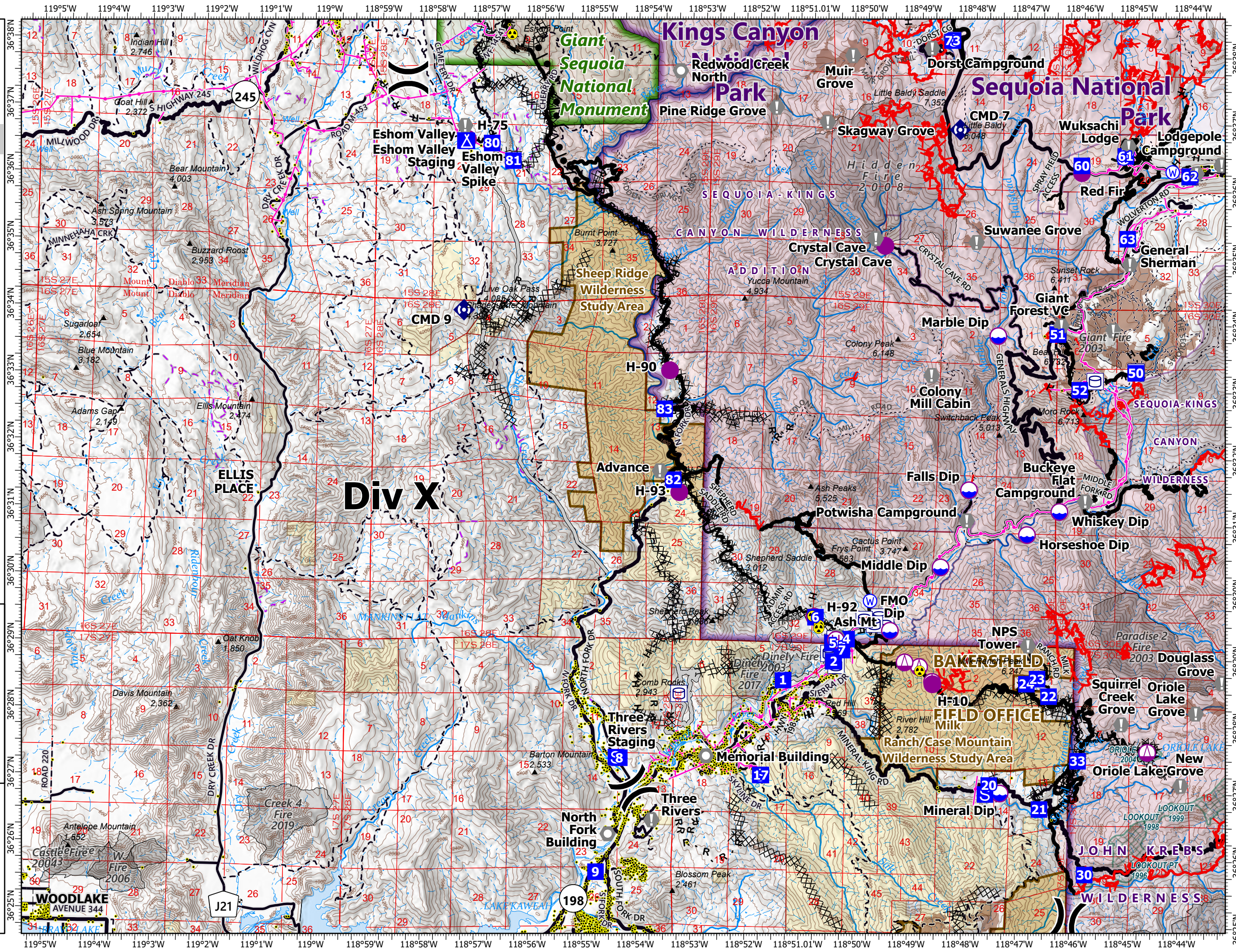
KNP Complex CA-KNP-000122 10/17/2021

Div X

- Dip Site
- Helispot
- Helibase
- Sling Site
- Division Break
- Drop Point
- Camp
- Staging Area
- Value at Risk
- Landmark
- Repeater
- Hazard
- Water Source
- Label Point
- Water Tank
- Structure
- Powerline
- Wildfire Daily Fire Perimeter
- Completed Burnout
- Completed Dozer Line
- Completed Hand Line
- Completed Mixed Construction Line
- Completed Road as Line
- Access or Improved Road
- Fire Edge
- Contained Line
- Summit; Gap
- Incorporated Place
- Census Designated Place
- County Line
- Major Road
- Minor Road
- Unpaved Road
- Unverified Route
- Trail
- Sequoia Groves
- Fire History (>100 Acres)
- Fire History (>100 Acres)
- Prescribed Fire History
- Gaging Station
- Spring/Seep
- Waterfall
- Well
- Dam / Weir
- Nonearthen Shore
- Stream/River; Artificial Path
- Canal / Ditch
- Pipeline
- Stream/River Intermittent
- Giant Sequoia National Monument
- NPS Unit Boundary
- USFS Boundary
- NPS Wilderness
- BLM Wilderness Study Area
- USFS Lands
- Bureau of Land Management Lands



10/16/2021 2115
North American 1983 Datum



Div X