

PILOT

KNP Complex
CA-KNP-000122
10/18/2021

88,068 acres at 10/17/2021 2100

1:200,000 - CIIMT2 - 10/17/2021 2121
Acres from IR and GIS
North American 1983 Datum. LatLong Grid

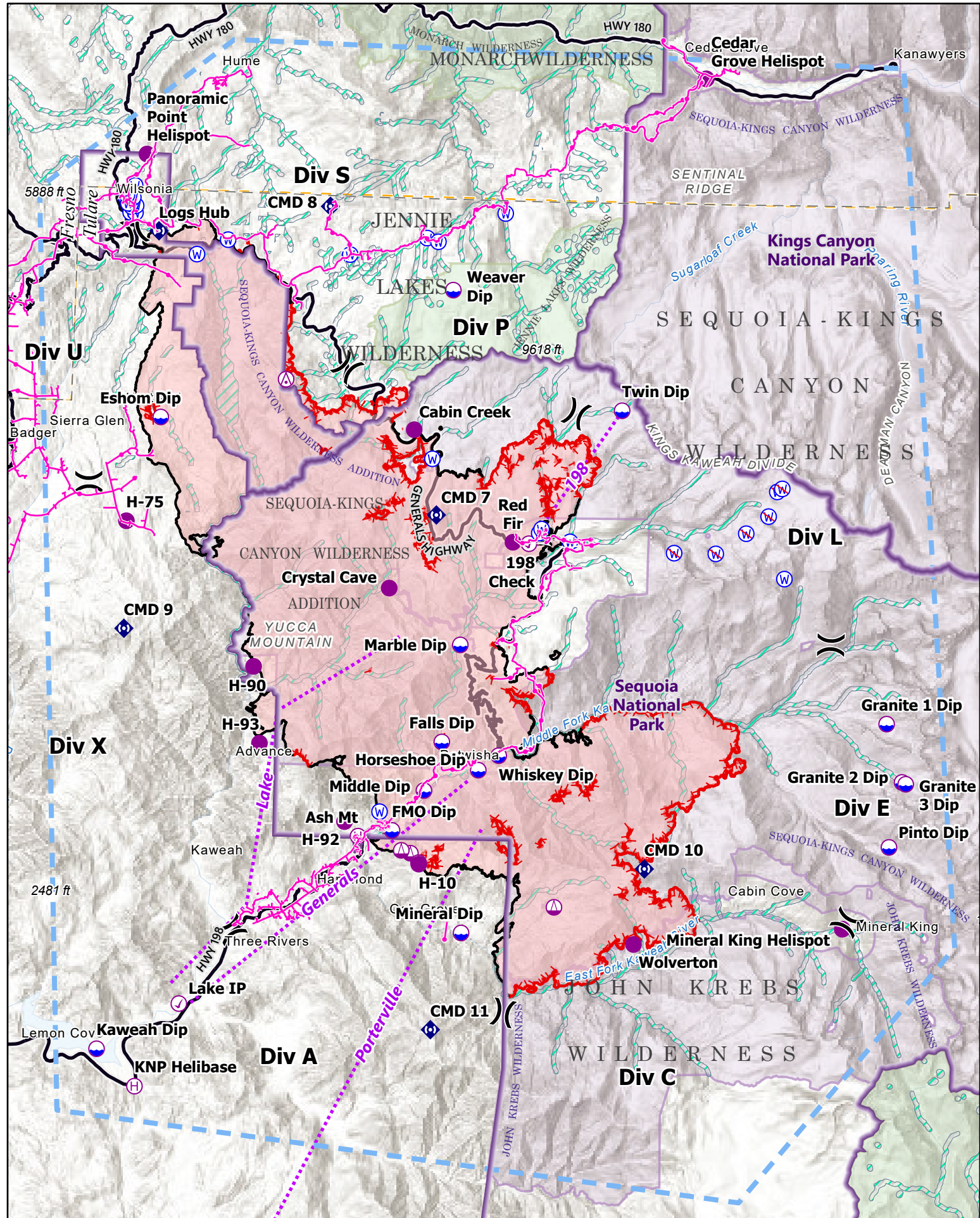
- | | | |
|------------------|--------------------------------|---------------------------------|
| ⊙ Aerial Hazard | ⊙ Water Source | ▭ Wildfire Daily Fire Perimeter |
| ⊙ Check Point | ⊙ Restricted Water Source | ▭ Park Boundary |
| ⊙ Dip Site | ⊙ Route | ▭ NPS Wilderness |
| ⊙ Helispot | ▬ Temporary Flight Restriction | ▭ USFS Wilderness |
| ⊙ Helibase | ▬ Fire Edge | ▭ Retardant Avoidance |
| ⊙ Sling Site | ▬ Contained Line | ▬ County Boundary |
| ⊙ Division Break | ▬ Major Roads | ▬ Powerline |
| ⊙ Repeater | ▬ Major Roads | |

QR Code

N

Miles: 0 2 4

Kilometers: 0 2 4



PILOT COORDINATE TABLE



KNP Complex
CA-KNP-000122
10/18/2021



FC Point Type	Label	Latitude WGS84 DDM	Longitude WGS84 DDM	FC Point Type	Label	Latitude WGS84 DDM	Longitude WGS84 DDM
Aerial Hazard		36° 40.021' N	118° 52.777' W	Drop Point	73	36° 38.201' N	118° 48.448' W
Airstrip or Airport	Woodlake Airport	36° 23.909' N	119° 06.231' W	Drop Point	74	36° 41.409' N	118° 56.895' W
Camp	Church Camp	36° 47.292' N	118° 54.937' W	Drop Point	75	36° 40.721' N	118° 56.479' W
Camp	Eshom Valley Spike	36° 36.560' N	118° 57.413' W	Drop Point	76	36° 40.993' N	118° 57.676' W
Camp	Horse Creek Campground	36° 23.413' N	118° 57.333' W	Drop Point	77	36° 38.656' N	118° 56.807' W
Camp	Hume Lake CG	36° 47.571' N	118° 54.516' W	Drop Point	78	36° 38.858' N	118° 57.333' W
Check Point	198 Check	36° 36.230' N	118° 45.536' W	Drop Point	79	36° 39.100' N	118° 57.426' W
Check Point	Lake IP	36° 25.166' N	118° 55.568' W	Drop Point	8	36° 27.396' N	118° 54.364' W
Dip Site	Eshom Dip	36° 39.066' N	118° 56.444' W	Drop Point	80	36° 36.537' N	118° 56.946' W
Dip Site	Falls Dip	36° 31.490' N	118° 47.991' W	Drop Point	81	36° 36.280' N	118° 56.545' W
Dip Site	FMO Dip	36° 29.370' N	118° 49.405' W	Drop Point	82	36° 31.564' N	118° 53.467' W
Dip Site	Granite 1 Dip	36° 30.862' N	118° 34.712' W	Drop Point	83	36° 32.619' N	118° 53.652' W
Dip Site	Granite 2 Dip	36° 30.722' N	118° 34.442' W	Drop Point	9	36° 25.687' N	118° 54.763' W
Dip Site	Granite 3 Dip	36° 30.680' N	118° 34.333' W	Helibase	Ash Mt	36° 29.220' N	118° 50.401' W
Dip Site	Horseshoe Dip	36° 30.837' N	118° 46.904' W	Helibase	Dunlap Helibase	36° 43.008' N	119° 08.289' W
Dip Site	Kaweah Dip	36° 24.056' N	118° 57.956' W	Helibase	KNP Helibase	36° 23.187' N	118° 56.822' W
Dip Site	Marble Dip	36° 33.800' N	118° 47.501' W	Helispot	Cabin Creek	36° 38.883' N	118° 48.976' W
Dip Site	Middle Dip	36° 30.330' N	118° 48.491' W	Helispot	Cedar Grove Helispot	36° 47.328' N	118° 40.556' W
Dip Site	Mineral Dip	36° 26.970' N	118° 47.321' W	Helispot	Crystal Cave	36° 35.116' N	118° 49.623' W
Dip Site	Pinto Dip	36° 29.176' N	118° 34.795' W	Helispot	H-10	36° 28.583' N	118° 48.601' W
Dip Site	Twin Dip	36° 39.423' N	118° 42.864' W	Helispot	H-75	36° 36.589' N	118° 57.394' W
Dip Site	Weaver Dip	36° 42.210' N	118° 47.900' W	Helispot	H-90	36° 33.197' N	118° 53.567' W
Dip Site	Whiskey Dip	36° 31.191' N	118° 46.311' W	Helispot	H-92	36° 29.559' N	118° 50.807' W
Division Break		36° 39.332' N	118° 44.213' W	Helispot	H-93	36° 31.380' N	118° 53.351' W
Division Break		36° 27.377' N	118° 36.001' W	Helispot	McKenzie Ridge Helispot	36° 44.840' N	119° 03.337' W
Division Break		36° 26.945' N	118° 54.092' W	Helispot	Mineral King Helispot	36° 27.218' N	118° 36.126' W
Division Break		36° 31.813' N	118° 38.156' W	Helispot	Panoramic Point Helispot	36° 45.296' N	118° 57.009' W
Division Break		36° 25.093' N	118° 46.044' W	Helispot	Pinehurst Helispot	36° 41.726' N	119° 01.192' W
Division Break		36° 35.916' N	118° 55.133' W	Helispot	Red Fir	36° 36.257' N	118° 46.007' W
Division Break		36° 43.453' N	118° 57.327' W	Repeater	CMD 10	36° 28.566' N	118° 41.972' W
Division Break				Repeater	CMD 11	36° 24.662' N	118° 48.169' W
Drop Point	1	36° 28.604' N	118° 51.365' W	Repeater	CMD 7	36° 36.875' N	118° 48.2748' W
Drop Point	17	36° 27.179' N	118° 51.740' W	Repeater	CMD 8	36° 44.141' N	118° 51.568' W
Drop Point	2	36° 28.900' N	118° 50.437' W	Repeater	CMD 9	36° 34.040' N	118° 57.403' W
Drop Point	20	36° 27.087' N	118° 47.524' W	Repeater	Logs Hub	36° 43.480' N	118° 56.607' W
Drop Point	21	36° 26.743' N	118° 46.587' W	Sling Site		36° 27.618' N	118° 44.607' W
Drop Point	22	36° 28.430' N	118° 46.449' W	Sling Site		36° 28.837' N	118° 48.853' W
Drop Point	23	36° 28.688' N	118° 46.668' W	Sling Site		36° 28.902' N	118° 49.123' W
Drop Point	24	36° 28.610' N	118° 46.863' W	Sling Site		36° 28.618' N	118° 48.609' W
Drop Point	3	36° 29.125' N	118° 50.284' W	Water Source		36° 36.292' N	118° 44.327' W
Drop Point	30	36° 25.777' N	118° 45.728' W	Water Source		36° 36.486' N	118° 45.240' W
Drop Point	31	36° 28.009' N	118° 38.810' W	Water Source		36° 36.582' N	118° 45.172' W
Drop Point	32	36° 27.157' N	118° 36.647' W	Water Source		36° 43.433' N	118° 48.700' W
Drop Point	33	36° 27.473' N	118° 45.890' W	Water Source		36° 43.350' N	118° 48.367' W
Drop Point	34	36° 27.934' N	118° 40.397' W	Water Source		36° 44.050' N	118° 46.400' W
Drop Point	4	36° 29.233' N	118° 50.203' W	Water Source		36° 35.498' N	118° 38.001' W
Drop Point	5	36° 29.172' N	118° 50.460' W	Water Source		36° 29.809' N	118° 49.782' W
Drop Point	50	36° 33.283' N	118° 44.942' W	Water Source		36° 38.201' N	118° 48.424' W
Drop Point	51	36° 33.840' N	118° 46.399' W	Water Source		36° 43.007' N	118° 50.959' W
Drop Point	52	36° 33.014' N	118° 45.975' W	Water Source		36° 43.904' N	118° 57.455' W
Drop Point	6	36° 29.551' N	118° 50.787' W	Water Source		36° 43.899' N	118° 57.311' W
Drop Point	60	36° 36.365' N	118° 46.012' W	Water Source		36° 44.037' N	118° 57.424' W
Drop Point	61	36° 36.518' N	118° 45.201' W	Water Source		36° 44.067' N	118° 57.296' W
Drop Point	62	36° 36.300' N	118° 43.801' W	Water Source		36° 44.106' N	118° 57.462' W
Drop Point	63	36° 35.282' N	118° 45.139' W	Water Source		36° 44.264' N	118° 57.384' W
Drop Point	7	36° 29.068' N	118° 50.287' W	Water Source		36° 44.239' N	118° 57.585' W
Drop Point	70	36° 42.121' N	118° 52.471' W	Water Source		36° 44.118' N	118° 57.529' W
Drop Point	71	36° 39.854' N	118° 50.470' W	Water Source		36° 42.945' N	118° 55.474' W
Drop Point	72	36° 43.325' N	118° 43.538' W	Water Source		36° 43.303' N	118° 54.564' W
Drop Point	725	36° 43.447' N	118° 57.313' W	Water Source		36° 44.545' N	118° 57.339' W
Drop Point	726	36° 44.409' N	118° 57.807' W	Water Source		36° 44.311' N	118° 57.574' W