

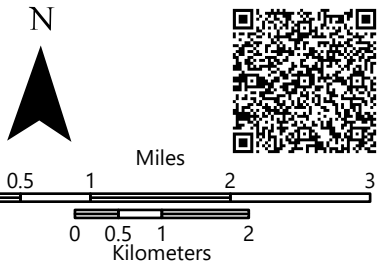
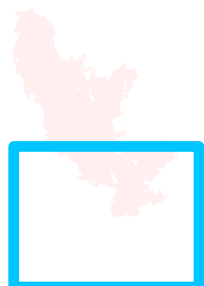


Field Operations

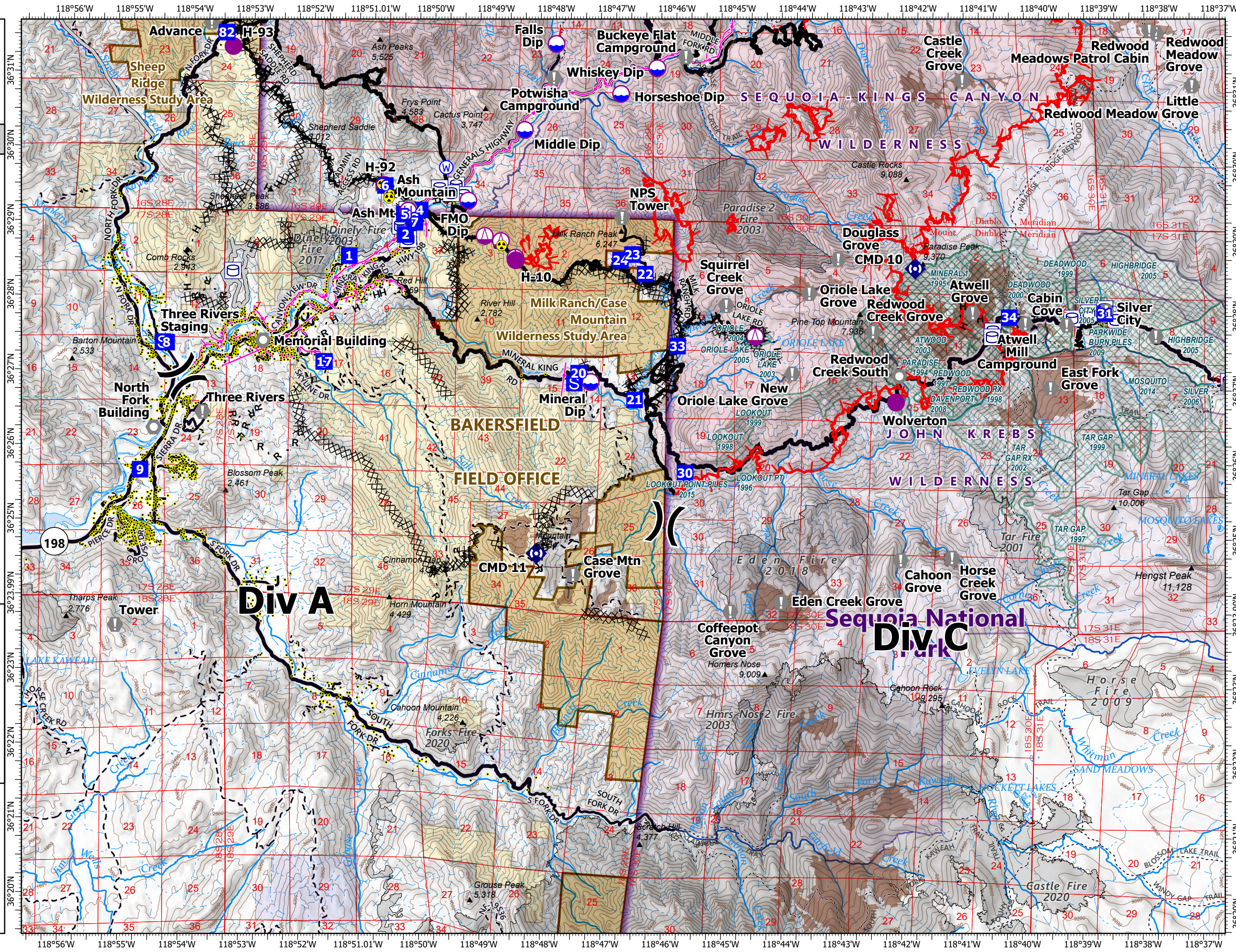
KNP Complex
CA-KNP-000122
10/19/2021

Div A

- Dip Site
- Helispot
- Helibase
- Sling Site
- Division Break
- Drop Point
- Staging Area
- Value at Risk
- Landmark
- Repeater
- Hazard
- Water Source
- Label Point
- Water Tank
- Structure
- Powerline
- Wildfire Daily Fire Perimeter
- Completed Dozer Line
- Completed Hand Line
- Completed Mixed Construction Line
- Completed Road as Line
- Access or Improved Road
- Fire Edge
- Contained Line
- Summit; Gap
- County Line
- Major Road
- Minor Road
- Unpaved Road
- Unverified Route
- Trail
- Sequoia Groves
- Fire History (>100 Acres)
- Fire History (>100 Acres)
- Prescribed Fire History
- Gaging Station
- Spring/Seep
- Waterfall
- Dam / Weir
- Nonearthen Shore
- Stream/River; Artificial Path
- Stream/River Intermittent
- NPS Unit Boundary
- NPS Wilderness
- BLM Wilderness Study Area
- State Public Lands
- Bureau of Land Management Lands



10/18/2021 2154
 North American 1983 Datum



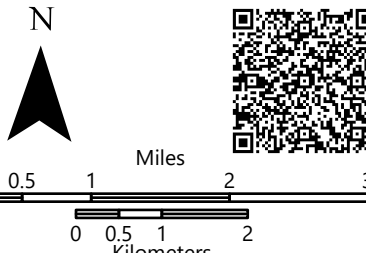


Field Operations

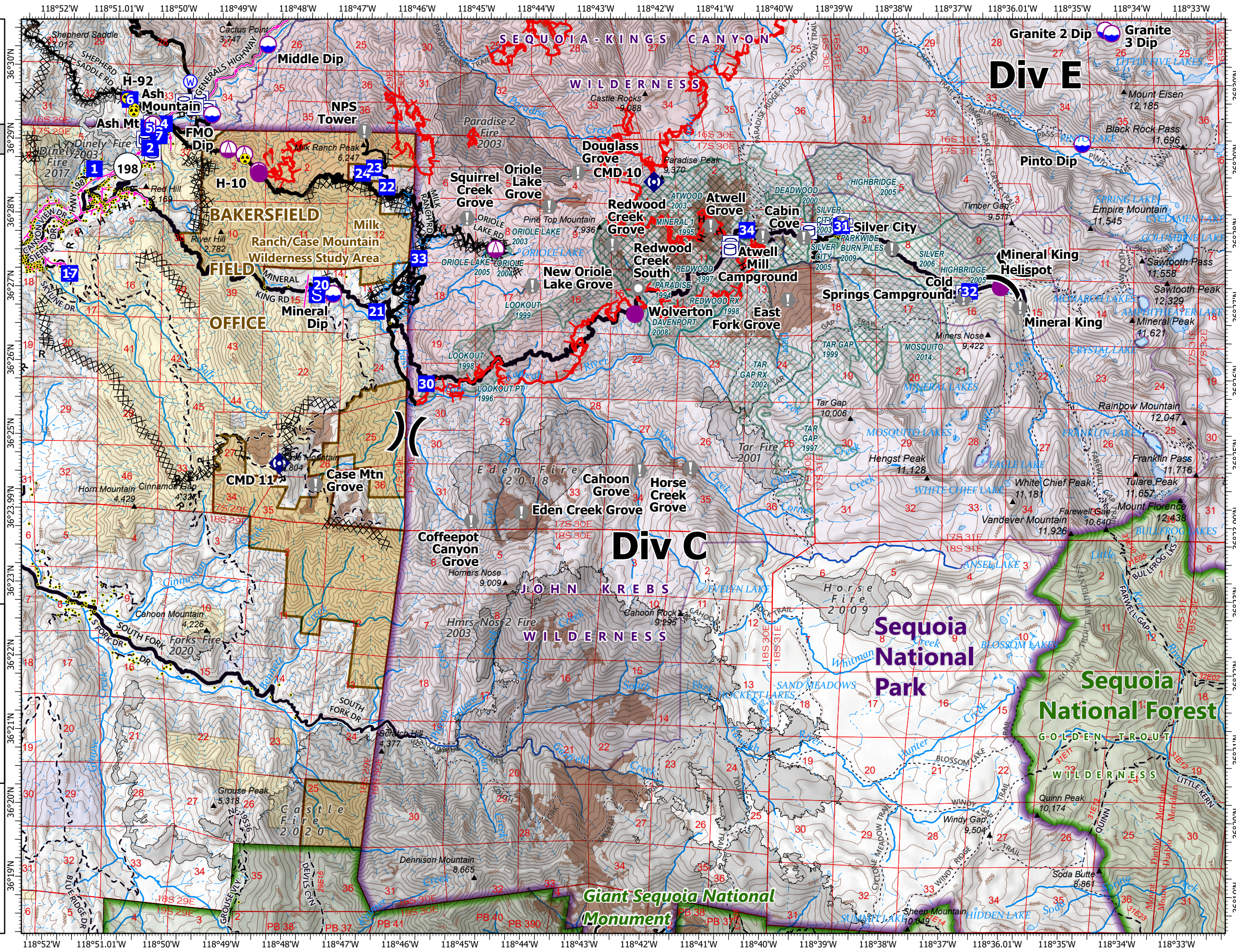
KNP Complex CA-KNP-000122 10/19/2021

Div C

- Dip Site
- Helispot
- Helibase
- Sling Site
- Division Break
- Drop Point
- Staging Area
- Value at Risk
- Landmark
- Repeater
- Hazard
- Water Source
- Label Point
- Water Tank
- Structure
- Powerline
- Wildfire Daily Fire Perimeter
- Completed Dozer Line
- Completed Hand Line
- Completed Mixed Construction Line
- Completed Road as Line
- Access or Improved Road
- Fire Edge
- Contained Line
- Summit; Gap
- County Line
- Major Road
- Minor Road
- Unpaved Road
- Trail
- Trail
- Sequoia Groves
- Fire History (>100 Acres)
- Fire History (>100 Acres)
- Prescribed Fire History
- Gaging Station
- Spring/Seep
- Waterfall
- Dam / Weir
- Nonearthen Shore
- Stream/River; Artificial Path
- Pipeline
- Stream/River Intermittent
- Giant Sequoia National Monument
- NPS Unit Boundary
- USFS Boundary
- NPS Wilderness
- USFS Wilderness
- BLM Wilderness Study Area
- USFS Lands
- State Public Lands
- Bureau of Land Management Lands



10/18/2021 2:155
North American 1983 Datum





Field Operations

KNP Complex CA-KNP-000122 10/19/2021

Div E

- Dip Site
- Helispot
- Sling Site
- Division Break
- Drop Point
- Staging Area
- Value at Risk
- Landmark
- Repeater
- Water Source
- Label Point
- Water Tank
- Structure
- Powerline
- Wildfire Daily Fire Perimeter
- Completed Dozer Line
- Completed Hand Line
- Completed Mixed Construction Line
- Completed Road as Line
- Fire Edge
- Contained Line
- Summit; Gap
- County Line
- Minor Road
- Unpaved Road
- Trail
- Sequoia Groves
- Fire History (>100 Acres)
- Prescribed Fire History
- Gaging Station
- Spring/Seep
- Waterfall
- Dam / Weir
- Stream/River; Artificial Path
- Pipeline
- Stream/River Intermittent
- NPS Unit Boundary
- NPS Wilderness
- BLM Wilderness Study Area
- Bureau of Land Management Lands

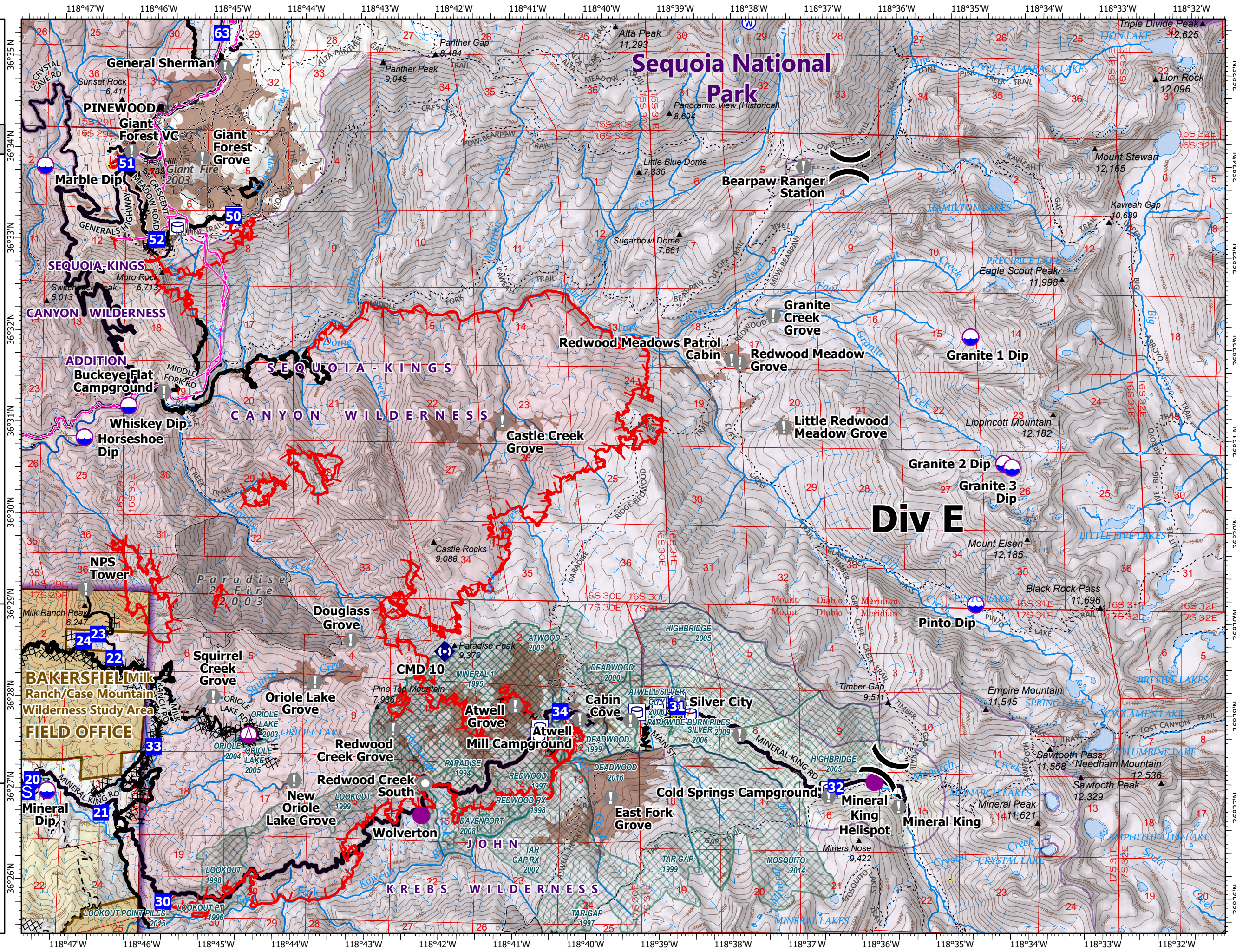


N

0 0.5 1 2 Miles

0 0.5 1 Kilometers

10/18/2021 2155
North American 1983 Datum



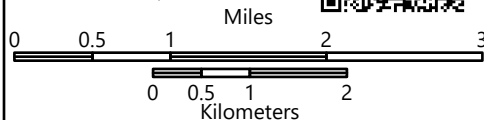


Field Operations

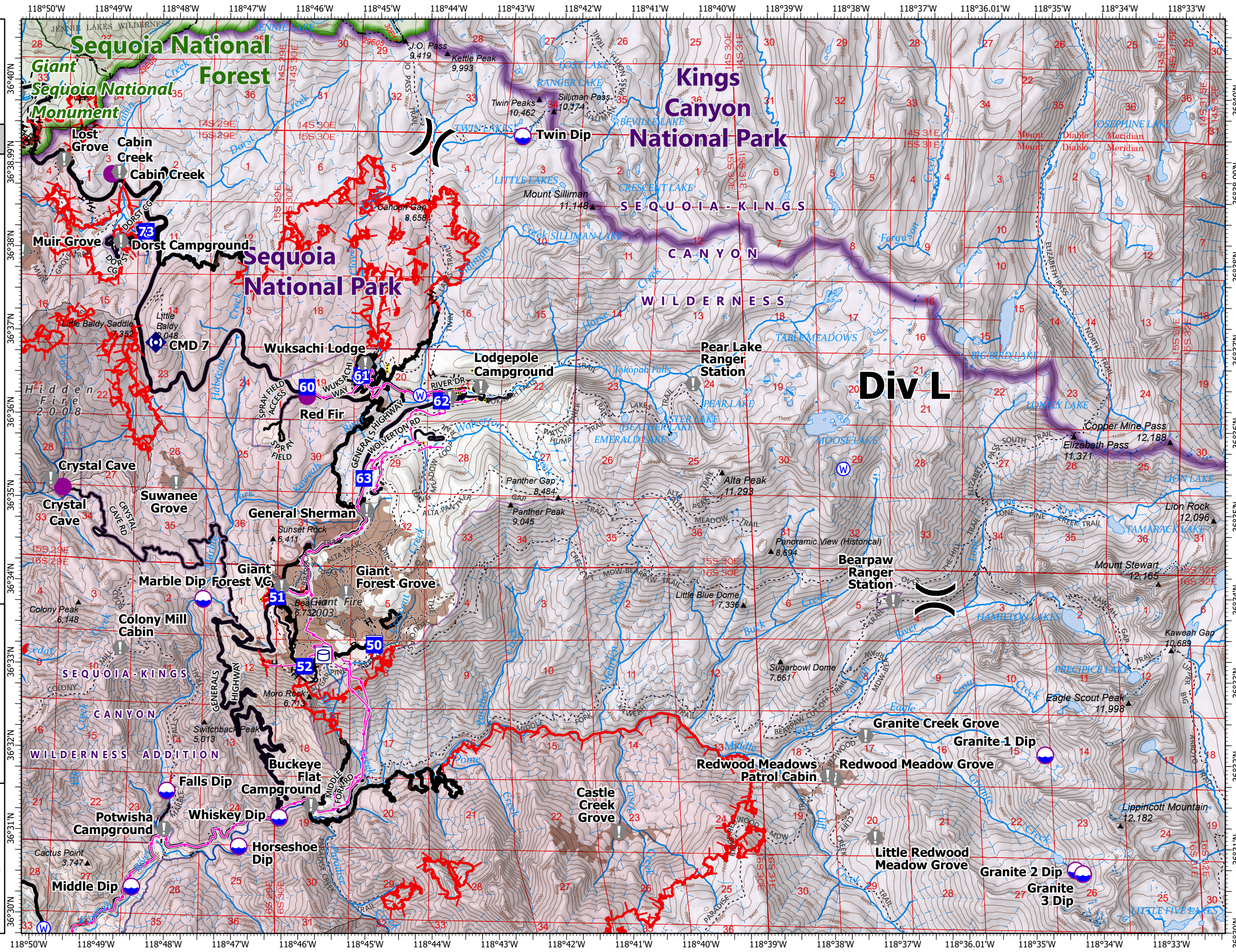
KNP Complex
CA-KNP-000122
10/19/2021

Div L

- Dip Site
- Helispot
- Division Break
- Drop Point
- Staging Area
- Value at Risk
- Repeater
- Water Source
- Label Point
- Water Tank
- Structure
- Powerline
- Wildfire Daily Fire
- Perimeter
- Completed Dozer Line
- Completed Hand Line
- Completed Road as Line
- Fire Edge
- Contained Line
- Summit; Gap
- County Line
- Minor Road
- Unpaved Road
- Trail
- Sequoia Groves
- Fire History (>100 Acres)
- Gaging Station
- Spring/Seep
- Waterfall
- Stream/River; Artificial Path
- Pipeline
- Stream/River Intermittent
- Giant Sequoia National Monument
- NPS Unit Boundary
- USFS Boundary
- NPS Wilderness
- USFS Wilderness
- USFS Lands



10/18/2021 2156
North American 1983 Datum



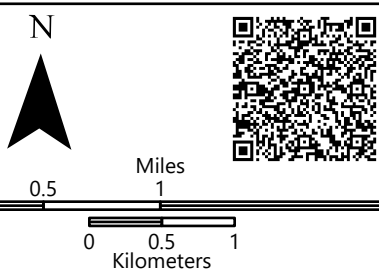


Field Operations

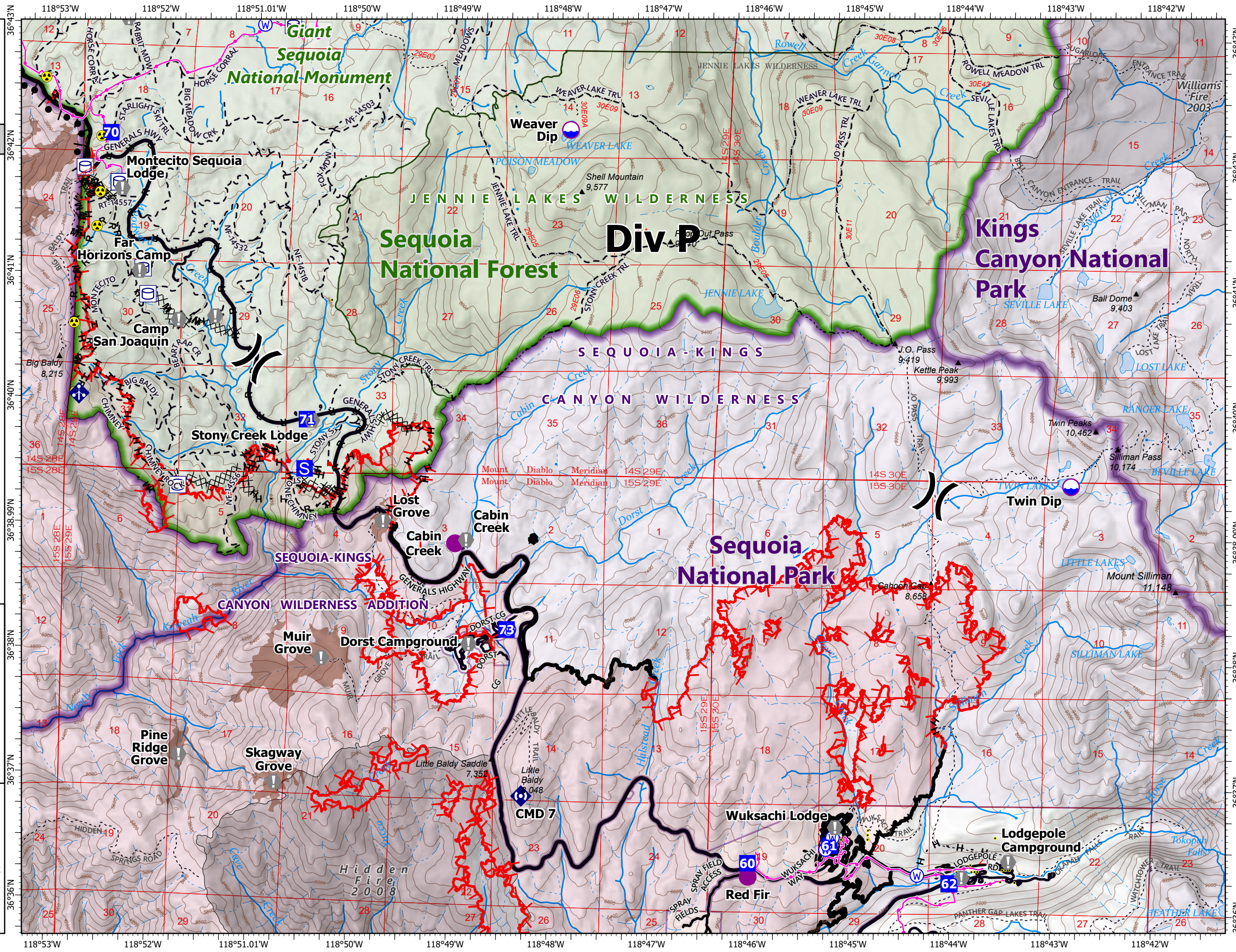
KNP Complex
CA-KNP-000122
10/19/2021

Div P

- Dip Site
- Helispot
- Division Break
- Drop Point
- Staging Area
- Value at Risk
- Landmark
- Mobile Weather Unit
- Repeater
- Hazard
- Water Source
- Label Point
- Water Tank
- Structure
- Powerline
- Wildfire Daily Fire Perimeter
- Completed Burnout
- Completed Dozer Line
- Completed Hand Line
- Completed Mixed Construction Line
- Completed Road as Line
- Access or Improved Road
- Fire Edge
- Contained Line
- Summit; Gap
- County Line
- Minor Road
- Unpaved Road
- Trail
- Trail
- Sequoia Groves
- Fire History (>100 Acres)
- Gaging Station
- Spring/Seep
- Waterfall
- Stream/River; Artificial Path
- Stream/River Intermittent
- Giant Sequoia National Monument
- NPS Unit Boundary
- USFS Boundary
- NPS Wilderness
- USFS Wilderness
- USFS Lands



10/18/2021 2157
North American 1983 Datum



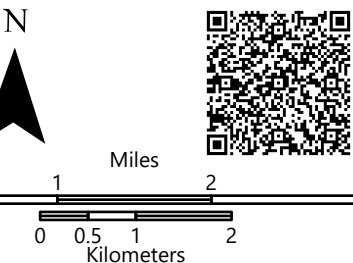


Field Operations

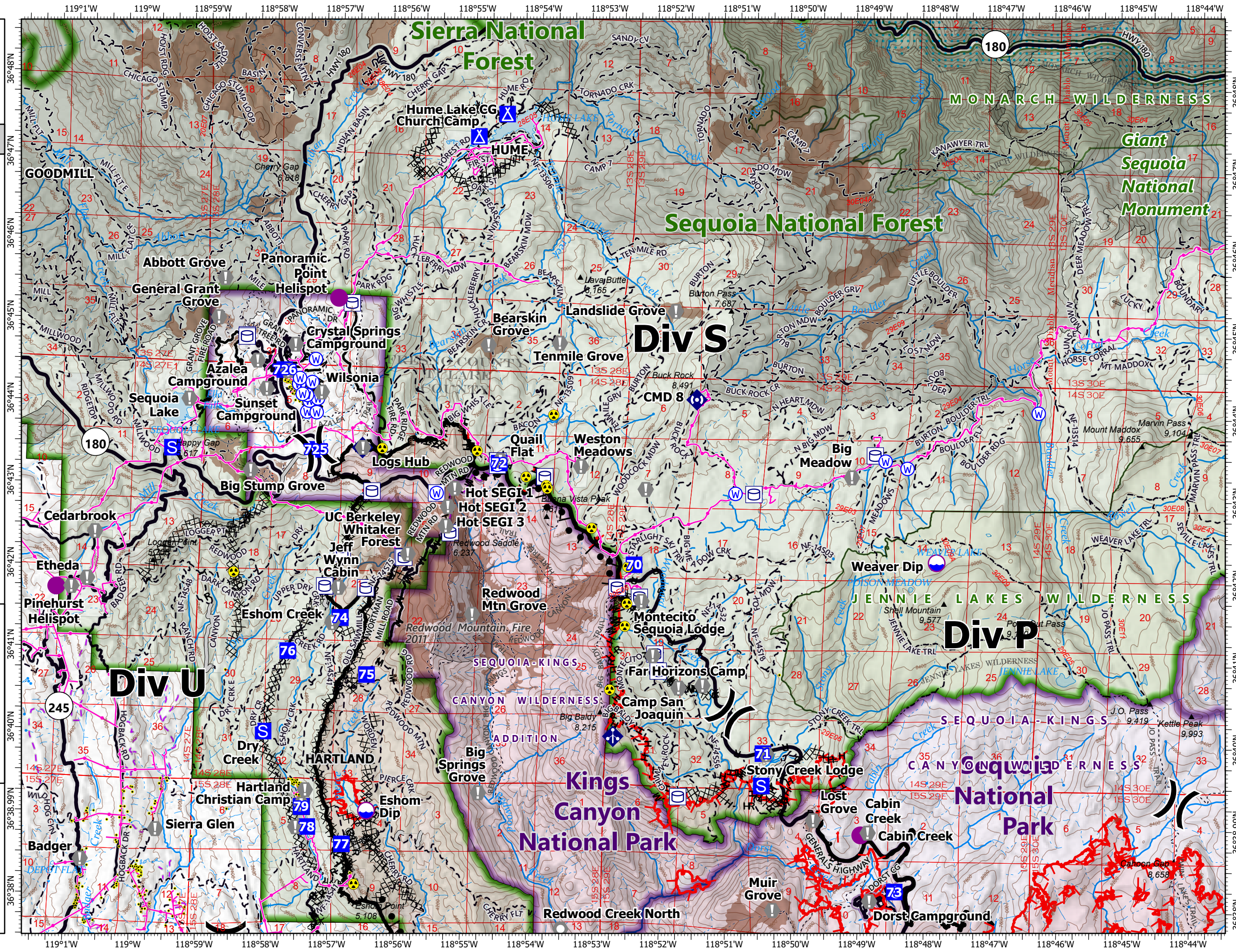
KNP Complex CA-KNP-000122 10/19/2021

Div S

- Dip Site
- Helispot
- Division Break
- Drop Point
- Camp
- Staging Area
- Value at Risk
- Landmark
- Mobile Weather Unit
- Repeater
- Hazard
- Water Source
- Label Point
- Water Tank
- Structure
- Powerline
- Wildfire Daily Fire Perimeter
- Completed Burnout
- Completed Dozer Line
- Completed Hand Line
- Completed Mixed Construction Line
- Completed Road as Line
- Access or Improved Road
- Fire Edge
- Contained Line
- Summit; Gap
- Census Designated Place
- County Line
- Major Road
- Minor Road
- Unpaved Road
- Unverified Route
- Trail
- Trail
- Sequoia Groves
- Fire History (>100 Acres)
- Prescribed Fire History
- Spring/Seep
- Waterfall
- Stream/River; Artificial Path
- Stream/River Intermittent
- Giant Sequoia National Monument
- NPS Unit Boundary
- USFS Boundary
- NPS Wilderness
- USFS Wilderness
- Wild and Scenic River
- USFS Lands
- Other State Lands



10/18/2021 2157
North American 1983 Datum





Field Operations

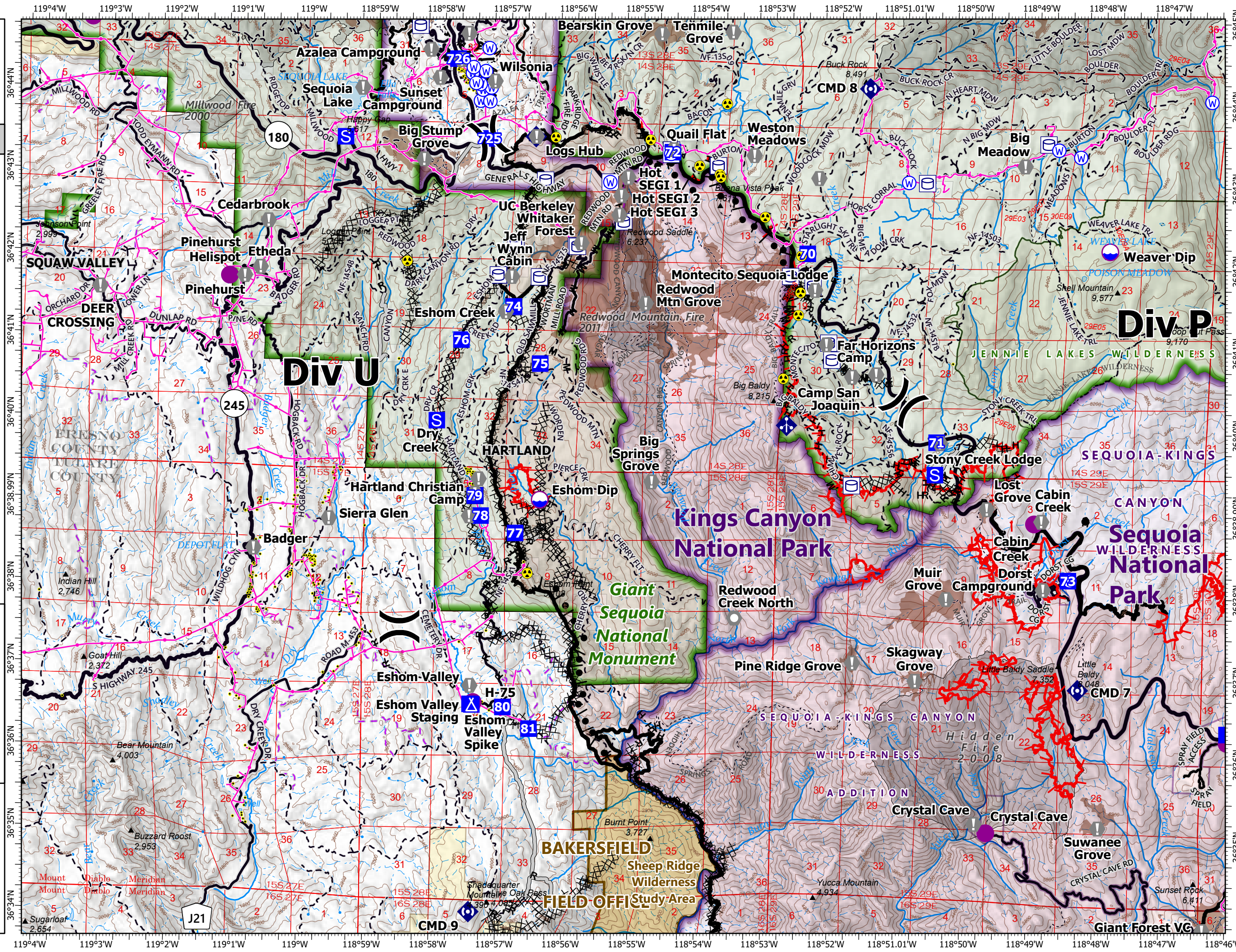
KNP Complex CA-KNP-000122 10/19/2021

Div U

- Dip Site
- Helispot
- Division Break
- Drop Point
- Camp
- Staging Area
- Value at Risk
- Landmark
- Mobile Weather Unit
- Repeater
- Hazard
- Water Source
- Label Point
- Water Tank
- Structure
- Powerline
- Wildfire Daily Fire Perimeter
- Completed Burnout
- Completed Dozer Line
- Completed Hand Line
- Completed Mixed Construction Line
- Completed Road as Line
- Access or Improved Road
- Fire Edge
- Contained Line
- Summit; Gap
- Census Designated Place
- County Line
- Major Road
- Minor Road
- Unpaved Road
- Unverified Route
- Trail
- Trail
- Sequoia Groves
- Fire History (>100 Acres)
- Prescribed Fire History
- Spring/Seep
- Waterfall
- Well
- Stream/River; Artificial Path
- Stream/River Intermittent
- Giant Sequoia National Monument
- NPS Unit Boundary
- USFS Boundary
- NPS Wilderness
- USFS Wilderness
- BLM Wilderness Study Area
- USFS Lands
- Other State Lands
- Bureau of Land Management Lands



10/18/2021 2158
North American 1983 Datum



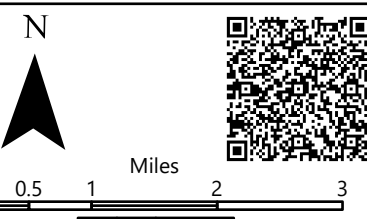


Field Operations

KNP Complex CA-KNP-000122 10/19/2021

Div X

- Dip Site
- Helispot
- Helibase
- Sling Site
- Division Break
- Drop Point
- Camp
- Staging Area
- Value at Risk
- Landmark
- Repeater
- Hazard
- Water Source
- Label Point
- Water Tank
- Structure
- Powerline
- Wildfire Daily Fire Perimeter
- Completed Burnout
- Completed Dozer Line
- Completed Hand Line
- Completed Mixed Construction Line
- Completed Road as Line
- Fire Edge
- Contained Line
- Summit; Gap
- Incorporated Place
- Census Designated Place
- County Line
- Major Road
- Minor Road
- Unpaved Road
- Unverified Route
- Trail
- Sequoia Groves
- Fire History (>100 Acres)
- Fire History (>100 Acres)
- Prescribed Fire History
- Gaging Station
- Spring/Seep
- Waterfall
- Well
- Dam / Weir
- Nonearthen Shore
- Stream/River; Artificial Path
- Canal / Ditch
- Pipeline
- Stream/River Intermittent
- Giant Sequoia National Monument
- NPS Unit Boundary
- USFS Boundary
- NPS Wilderness
- BLM Wilderness Study Area
- USFS Lands
- Bureau of Land Management Lands



10/18/2021 2159
North American 1983 Datum

