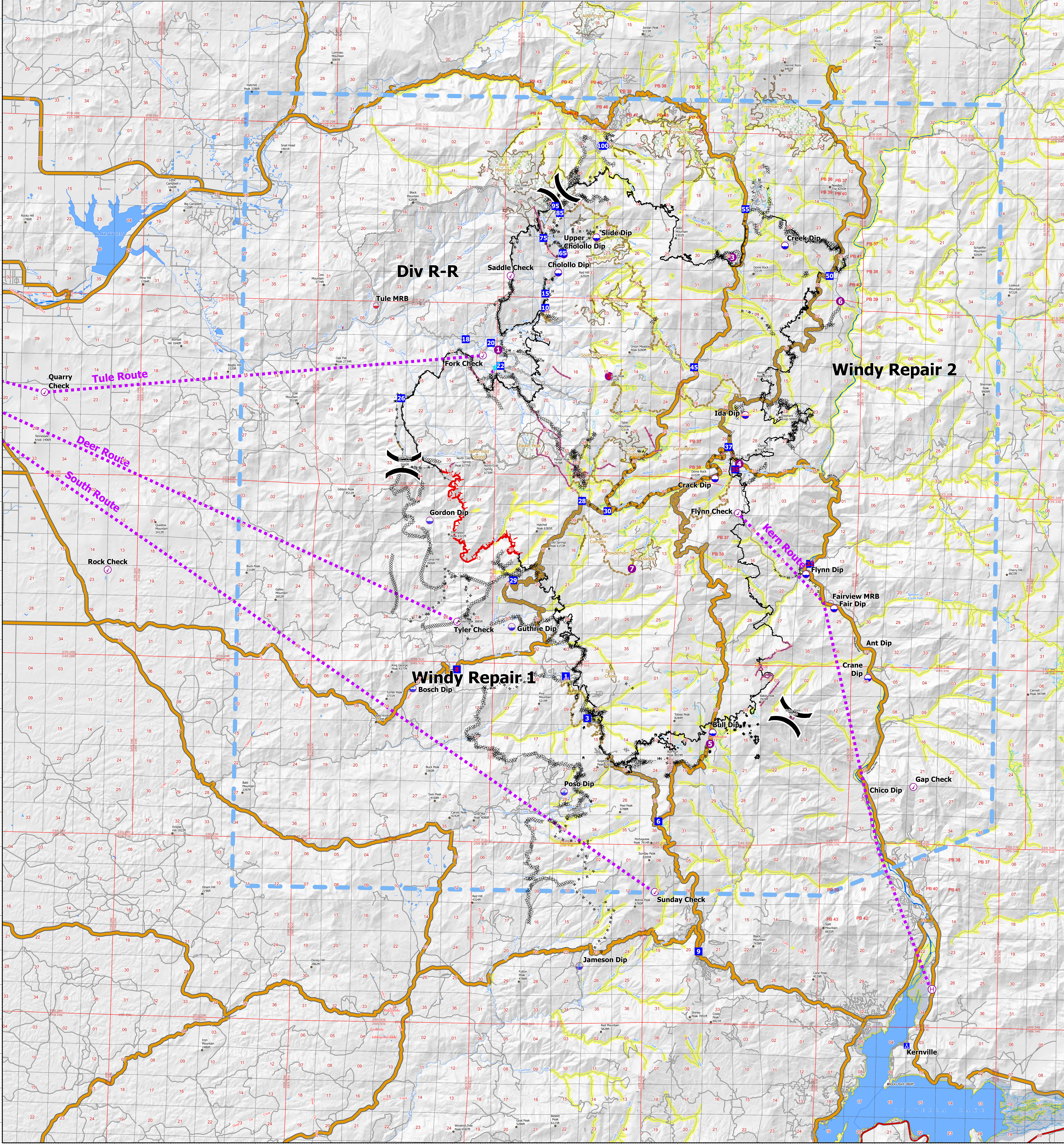



Point Type	Label	Latitude	Longitude	Point Type	Label	Latitude	Longitude	Point Type	Label	Latitude	Longitude	Point Type	Label	Latitude	Longitude
Camp	Kernville	35° 41.679' N	118° 25.917' W	Drop Point	1	35° 52.240' N	118° 38.248' W	Drop Point	85	36° 05.670' N	118° 38.740' W	Hot Spot - Spot Fire	7	35° 55.392' N	118° 35.959' W
Check Point	Flynn Check	35° 57.051' N	118° 32.208' W	Drop Point	10	36° 02.914' N	118° 33.366' W	Drop Point	9	35° 44.325' N	118° 33.366' W	Hot Spot - Spot Fire	8	36° 00.473' N	118° 34.747' W
Check Point	Fork Check	36° 01.502' N	118° 41.403' W	Drop Point	100	36° 07.640' N	118° 37.244' W	Drop Point	95	36° 05.872' N	118° 38.905' W	Hot Spot - Spot Fire	9	36° 05.615' N	118° 34.747' W
Check Point	Gap Check	35° 49.150' N	118° 25.811' W	Drop Point	15	36° 03.323' N	118° 39.210' W	Drop Point	15	36° 05.279' N	118° 32.388' W	Hot Spot - Spot Fire	10	36° 05.559' N	118° 34.600' W
Check Point	Quarry Check	36° 00.202' N	118° 57.013' W	Drop Point	16	36° 01.963' N	118° 42.026' W	Hazard	1	35° 59.383' N	118° 32.451' W	Hot Spot - Spot Fire	11	35° 55.336' N	118° 31.633' W
Check Point	Rock Check	35° 55.090' N	118° 54.641' W	Drop Point	20	36° 01.872' N	118° 41.123' W	Hazard	2	35° 59.109' N	118° 32.539' W	Hot Spot - Spot Fire	12	35° 54.821' N	118° 31.886' W
Check Point	Saddle Check	36° 03.830' N	118° 40.460' W	Drop Point	22	36° 01.280' N	118° 40.773' W	Hazard	3	35° 50.449' N	118° 38.870' W	Hot Spot - Spot Fire	13	35° 50.449' N	118° 38.870' W
Check Point	Sunday Check	35° 46.030' N	118° 34.951' W	Drop Point	26	36° 00.220' N	118° 44.293' W	Hazard	4	36° 04.240' N	118° 36.606' W	Hot Spot - Spot Fire	14	35° 50.879' N	118° 36.962' W
Check Point	Tyler Check	35° 53.770' N	118° 42.151' W	Drop Point	28	35° 57.332' N	118° 37.777' W	Hazard	5	36° 04.000' N	118° 36.071' W	Hot Spot - Spot Fire	15	36° 07.524' N	118° 35.532' W
Dip Site	Bull Dip	35° 50.671' N	118° 32.989' W	Drop Point	29	35° 54.995' N	118° 40.181' W	Hazard	6	35° 49.684' N	118° 36.386' W	Hot Spot - Spot Fire	16	36° 05.610' N	118° 31.300' W
Dip Site	Cholollo Dip	36° 03.940' N	118° 38.761' W	Drop Point	3	35° 51.032' N	118° 37.463' W	Hazard	7	35° 56.637' N	118° 38.779' W	Hot Spot - Spot Fire	17	36° 07.364' N	118° 31.300' W
Dip Site	Crack Dip	35° 58.044' N	118° 33.048' W	Drop Point	30	35° 57.051' N	118° 36.864' W	Hazard	8	35° 59.366' N	118° 35.213' W	Hot Spot - Spot Fire	18	35° 56.241' N	118° 40.610' W
Dip Site	Crane Dip	35° 52.330' N	118° 27.491' W	Drop Point	32	35° 55.615' N	118° 29.611' W	Hazard	9	35° 56.871' N	118° 38.222' W	Hot Spot - Spot Fire	19	35° 56.172' N	118° 40.764' W
Dip Site	Fair Dip	36° 04.831' N	118° 30.682' W	Drop Point	35	35° 58.319' N	118° 32.334' W	Hazard	10	35° 49.772' N	118° 36.526' W	Hot Spot - Spot Fire	20	36° 00.927' N	118° 42.543' W
Dip Site	Guthrie Dip	35° 54.330' N	118° 28.731' W	Drop Point	37	35° 58.965' N	118° 32.583' W	Helibase	1	35° 43.328' N	118° 25.044' W	Hot Spot - Spot Fire	21	36° 06.324' N	118° 38.455' W
Dip Site	Jameson Dip	35° 53.107' N	118° 29.751' W	Drop Point	40	36° 01.260' N	118° 33.857' W	Helibase	2	36° 01.562' N	118° 33.389' W	Hot Spot - Spot Fire	22	36° 05.795' N	118° 38.903' W
Dip Site	Poso Dip	35° 59.899' N	118° 32.001' W	Drop Point	50	36° 03.971' N	118° 29.070' W	Helibase	3	36° 01.672' N	118° 40.858' W	Hot Spot - Spot Fire	23	36° 06.854' N	118° 37.141' W
Dip Site	Sunday Dip	36° 04.980' N	118° 37.421' W	Drop Point	55	36° 05.870' N	118° 32.114' W	Helibase	4	36° 00.962' N	118° 36.888' W	Hot Spot - Spot Fire	24	36° 05.642' N	118° 39.277' W
Dip Site	Upper Cholollo Dip	36° 04.471' N	118° 38.570' W	Drop Point	6	35° 48.076' N	118° 34.869' W	Helibase	5	36° 04.470' N	118° 32.552' W	Hot Spot - Spot Fire	25	36° 05.642' N	118° 39.311' W
Division Break		36° 06.187' N	118° 38.799' W	Drop Point	65	36° 04.507' N	118° 32.191' W	Helibase	6	35° 58.481' N	118° 32.191' W	Hot Spot - Spot Fire	26	36° 05.658' N	118° 39.387' W
Division Break		35° 58.279' N	118° 44.169' W	Drop Point	75	36° 04.939' N	118° 39.312' W	Helibase	7	35° 50.350' N	118° 33.071' W	Hot Spot - Spot Fire	27	36° 05.656' N	118° 39.303' W
Division Break		35° 51.165' N	118° 30.234' W	Drop Point	8	35° 52.387' N	118° 42.134' W	Helibase	8	36° 03.242' N	118° 28.673' W	Hot Spot - Spot Fire	28	36° 05.438' N	118° 39.247' W



**AIR OPS**  
10/25/21


**AIR OPERATIONS**  
Windy  
CA-TIA-003058  
10/25/21

**AIR OPS**  
10/25/21



Spatial Ref:  
NAD83 UTM 11N  
Scale: 1:65,000

● Check Point	— Completed Hand Line	— Road Repair
● Dip Site	— Completed Mixed Construction Line	— Retardant Drop
● Helibase	— Completed Road as Line	— Fire Edge
● Division Break	— Planned Outer Line	— Contained Line
● Drop Point	— Planned Hand Line	— Retardant Avoidance Area
● Camp	— Planned Road as Line	— Temporary Flight Restriction
● Completed Dazer Line	— Access or Improved Road	— Giant Sequoia Growth
● Completed Fuel Break	— Other	
	— Repair Line	



Prepared by: GBTeam/10/24/2021 20:04