

**PILOT**  
 KNP Complex  
 CA-KNP-000122  
 10/12/2021

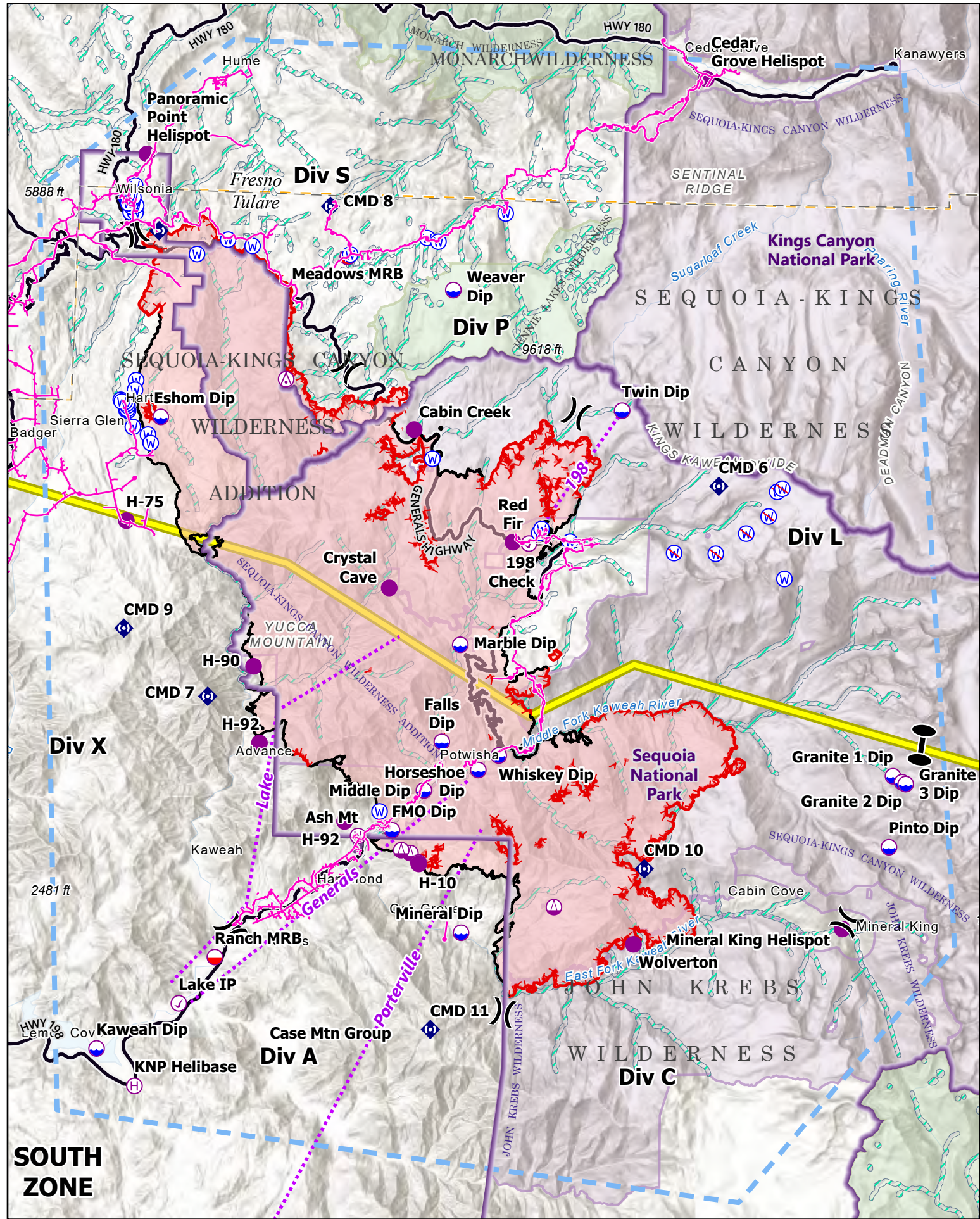
87,786 acres at 10/11/2021 2038

1:200,000 - CIIMT2 - 10/11/2021 2110  
 Acres from IR and GIS  
 North American 1983 Datum. LatLong Grid

- |                         |                                |                                 |
|-------------------------|--------------------------------|---------------------------------|
| ⊙ Aerial Hazard         | ⊙ Repeater                     | ▭ Wildfire Daily Fire Perimeter |
| ⊙ Check Point           | ⊙ Water Source                 | ▭ Park Boundary                 |
| ⊙ Dip Site              | ⊙ Restricted Water Source      | ▭ NPS Wilderness                |
| ⊙ Mobile Retardant Base | ⊙ Route                        | ▭ USFS Wilderness               |
| ⊙ Helispot              | ⊙ Temporary Flight Restriction | ▭ Retardant Avoidance           |
| ⊙ Helibase              | ⊙ Fire Edge                    | ▭ County Boundary               |
| ⊙ Sling Site            | ⊙ Contained Line               | ⊙ Powerline                     |
| ⊙ Division Break        | ⊙ Major Roads                  |                                 |
| ⊙ Zone Break            | ⊙ Major Roads                  |                                 |

Miles 0 2 4  
 Kilometers 0 2 4

N



# PILOT COORDINATE TABLE

KNP Complex  
CA-KNP-000122  
10/12/2021



| FC Point Type       | Label              | Latitude WGS84 DDM | Longitude WGS84 DDM | FC Point Type         | Label                    | Latitude WGS84 DDM | Longitude WGS84 DDM |
|---------------------|--------------------|--------------------|---------------------|-----------------------|--------------------------|--------------------|---------------------|
| Aerial Hazard       |                    | 36° 40.021' N      | 118° 52.777' W      | Drop Point            | 82                       | 36° 31.564' N      | 118° 53.467' W      |
| Airstrip or Airport | Woodlake Airport   | 36° 23.909' N      | 119° 06.231' W      | Drop Point            | 83                       | 36° 32.619' N      | 118° 53.652' W      |
| Camp                | Church Camp        | 36° 47.292' N      | 118° 54.937' W      | Drop Point            | 9                        | 36° 25.687' N      | 118° 54.763' W      |
| Camp                | Eshom Valley Spike | 36° 36.560' N      | 118° 57.413' W      | Helibase              | Ash Mt                   | 36° 29.220' N      | 118° 50.401' W      |
| Camp                | Hume Lake CG       | 36° 47.571' N      | 118° 54.516' W      | Helibase              | Dunlap Helibase          | 36° 43.008' N      | 119° 08.289' W      |
| Camp                | Woodlake Basecamp  | 36° 24.522' N      | 119° 04.576' W      | Helibase              | KNP Helibase             | 36° 23.187' N      | 118° 56.822' W      |
| Check Point         | 198 Check          | 36° 36.230' N      | 118° 45.536' W      | Helispot              | Cabin Creek              | 36° 38.883' N      | 118° 48.976' W      |
| Check Point         | Lake IP            | 36° 25.166' N      | 118° 55.568' W      | Helispot              | Cedar Grove Helispot     | 36° 47.328' N      | 118° 40.556' W      |
| Dip Site            | Eshom Dip          | 36° 39.066' N      | 118° 56.444' W      | Helispot              | Crystal Cave             | 36° 35.116' N      | 118° 49.623' W      |
| Dip Site            | Falls Dip          | 36° 31.490' N      | 118° 47.991' W      | Helispot              | H-10                     | 36° 28.583' N      | 118° 48.601' W      |
| Dip Site            | FMO Dip            | 36° 29.370' N      | 118° 49.405' W      | Helispot              | H-75                     | 36° 36.589' N      | 118° 57.394' W      |
| Dip Site            | Granite 1 Dip      | 36° 30.862' N      | 118° 34.712' W      | Helispot              | H-90                     | 36° 33.197' N      | 118° 53.567' W      |
| Dip Site            | Granite 2 Dip      | 36° 30.722' N      | 118° 34.442' W      | Helispot              | H-92                     | 36° 31.380' N      | 118° 53.351' W      |
| Dip Site            | Granite 3 Dip      | 36° 30.680' N      | 118° 34.333' W      | Helispot              | H-92                     | 36° 29.559' N      | 118° 50.807' W      |
| Dip Site            | Horseshoe Dip      | 36° 30.837' N      | 118° 46.904' W      | Helispot              | McKenzie Ridge Helispot  |                    |                     |
| Dip Site            | Kaweah Dip         | 36° 24.056' N      | 118° 57.956' W      | Helispot              | Mineral King Helispot    | 36° 27.218' N      | 118° 36.126' W      |
| Dip Site            | Marble Dip         | 36° 33.800' N      | 118° 47.501' W      | Helispot              | Panoramic Point Helispot | 36° 45.296' N      | 118° 57.009' W      |
| Dip Site            | Middle Dip         | 36° 30.330' N      | 118° 48.491' W      | Helispot              | Pinehurst Helispot       | 36° 41.726' N      | 119° 01.192' W      |
| Dip Site            | Mineral Dip        | 36° 26.970' N      | 118° 47.321' W      | Helispot              | Red Fir                  | 36° 36.257' N      | 118° 46.007' W      |
| Dip Site            | Pinto Dip          | 36° 29.176' N      | 118° 34.795' W      | Mobile Retardant Base | Meadows MRB              | 36° 42.946' N      | 118° 51.030' W      |
| Dip Site            | Twin Dip           | 36° 39.423' N      | 118° 42.864' W      | Mobile Retardant Base | Ranch MRB                | 36° 26.281' N      | 118° 54.538' W      |
| Dip Site            | Weaver Dip         | 36° 42.210' N      | 118° 47.900' W      | Repeater              |                          |                    |                     |
| Dip Site            | Whiskey Dip        | 36° 31.191' N      | 118° 46.311' W      | Repeater              | CMD 10                   | 36° 28.566' N      | 118° 41.972' W      |
| Division Break      |                    | 36° 39.332' N      | 118° 44.213' W      | Repeater              | CMD 11                   | 36° 24.662' N      | 118° 48.169' W      |
| Division Break      |                    | 36° 27.377' N      | 118° 36.001' W      | Repeater              | CMD 6                    | 36° 37.669' N      | 118° 39.978' W      |
| Division Break      |                    | 36° 26.945' N      | 118° 54.092' W      | Repeater              | CMD 7                    | 36° 32.464' N      | 118° 54.899' W      |
| Division Break      |                    | 36° 25.093' N      | 118° 46.044' W      | Repeater              | CMD 8                    | 36° 44.141' N      | 118° 51.568' W      |
| Division Break      |                    | 36° 43.453' N      | 118° 57.327' W      | Repeater              | CMD 9                    | 36° 34.040' N      | 118° 57.403' W      |
| Drop Point          | 1                  | 36° 28.604' N      | 118° 51.365' W      | Sling Site            |                          | 36° 27.618' N      | 118° 44.607' W      |
| Drop Point          | 17                 | 36° 27.179' N      | 118° 51.740' W      | Sling Site            |                          | 36° 28.837' N      | 118° 48.853' W      |
| Drop Point          | 2                  | 36° 28.900' N      | 118° 50.437' W      | Sling Site            |                          | 36° 28.902' N      | 118° 49.123' W      |
| Drop Point          | 20                 | 36° 27.087' N      | 118° 47.524' W      | Water Source          |                          | 36° 28.618' N      | 118° 48.609' W      |
| Drop Point          | 21                 | 36° 26.743' N      | 118° 46.587' W      | Water Source          |                          | 36° 36.292' N      | 118° 44.327' W      |
| Drop Point          | 22                 | 36° 28.430' N      | 118° 46.449' W      | Water Source          |                          | 36° 36.486' N      | 118° 45.240' W      |
| Drop Point          | 23                 | 36° 28.688' N      | 118° 46.668' W      | Water Source          |                          | 36° 36.582' N      | 118° 45.172' W      |
| Drop Point          | 24                 | 36° 28.610' N      | 118° 46.863' W      | Water Source          |                          | 36° 43.433' N      | 118° 48.700' W      |
| Drop Point          | 3                  | 36° 29.125' N      | 118° 50.284' W      | Water Source          |                          | 36° 43.350' N      | 118° 48.367' W      |
| Drop Point          | 30                 | 36° 25.777' N      | 118° 45.928' W      | Water Source          |                          | 36° 44.050' N      | 118° 46.400' W      |
| Drop Point          | 31                 | 36° 28.009' N      | 118° 38.810' W      | Water Source          |                          | 36° 35.498' N      | 118° 38.001' W      |
| Drop Point          | 32                 | 36° 27.157' N      | 118° 36.647' W      | Water Source          |                          | 36° 39.211' N      | 118° 57.460' W      |
| Drop Point          | 33                 | 36° 27.473' N      | 118° 45.890' W      | Water Source          |                          | 36° 38.815' N      | 118° 57.261' W      |
| Drop Point          | 34                 | 36° 27.934' N      | 118° 40.397' W      | Water Source          |                          | 36° 39.199' N      | 118° 57.413' W      |
| Drop Point          | 4                  | 36° 29.233' N      | 118° 50.203' W      | Water Source          |                          | 36° 39.237' N      | 118° 57.438' W      |
| Drop Point          | 5                  | 36° 29.172' N      | 118° 50.460' W      | Water Source          |                          | 36° 39.317' N      | 118° 57.433' W      |
| Drop Point          | 50                 | 36° 33.283' N      | 118° 44.942' W      | Water Source          |                          | 36° 39.366' N      | 118° 57.456' W      |
| Drop Point          | 51                 | 36° 33.840' N      | 118° 46.399' W      | Water Source          |                          | 36° 39.405' N      | 118° 57.517' W      |
| Drop Point          | 52                 | 36° 33.014' N      | 118° 45.975' W      | Water Source          |                          | 36° 39.453' N      | 118° 57.633' W      |
| Drop Point          | 6                  | 36° 29.551' N      | 118° 50.787' W      | Water Source          |                          | 36° 39.413' N      | 118° 57.605' W      |
| Drop Point          | 60                 | 36° 36.365' N      | 118° 46.012' W      | Water Source          |                          | 36° 29.809' N      | 118° 49.782' W      |
| Drop Point          | 61                 | 36° 36.518' N      | 118° 45.201' W      | Water Source          |                          | 36° 38.201' N      | 118° 48.424' W      |
| Drop Point          | 62                 | 36° 36.300' N      | 118° 43.801' W      | Water Source          |                          | 36° 43.007' N      | 118° 50.959' W      |
| Drop Point          | 63                 | 36° 35.282' N      | 118° 45.139' W      | Water Source          |                          | 36° 43.165' N      | 118° 53.843' W      |
| Drop Point          | 7                  | 36° 29.068' N      | 118° 50.287' W      | Water Source          |                          | 36° 43.904' N      | 118° 57.455' W      |
| Drop Point          | 70                 | 36° 42.121' N      | 118° 52.471' W      | Water Source          |                          | 36° 43.899' N      | 118° 57.311' W      |
| Drop Point          | 71                 | 36° 39.854' N      | 118° 50.470' W      | Water Source          |                          | 36° 44.037' N      | 118° 57.424' W      |
| Drop Point          | 72                 | 36° 43.325' N      | 118° 54.538' W      | Water Source          |                          | 36° 44.067' N      | 118° 57.296' W      |
| Drop Point          | 725                | 36° 43.447' N      | 118° 57.313' W      | Water Source          |                          | 36° 44.106' N      | 118° 57.462' W      |
| Drop Point          | 726                | 36° 44.409' N      | 118° 57.807' W      | Water Source          |                          | 36° 44.264' N      | 118° 57.384' W      |
| Drop Point          | 73                 | 36° 38.201' N      | 118° 48.448' W      | Water Source          |                          | 36° 44.239' N      | 118° 57.585' W      |
| Drop Point          | 74                 | 36° 41.409' N      | 118° 56.895' W      | Water Source          |                          | 36° 44.118' N      | 118° 57.529' W      |
| Drop Point          | 75                 | 36° 40.721' N      | 118° 56.479' W      | Water Source          |                          | 36° 38.642' N      | 118° 56.811' W      |
| Drop Point          | 76                 | 36° 40.993' N      | 118° 57.676' W      | Water Source          |                          | 36° 38.441' N      | 118° 56.726' W      |
| Drop Point          | 77                 | 36° 38.656' N      | 118° 56.807' W      | Water Source          |                          | 36° 42.945' N      | 118° 55.474' W      |
| Drop Point          | 78                 | 36° 38.858' N      | 118° 57.333' W      | Water Source          |                          | 36° 43.303' N      | 118° 54.564' W      |
| Drop Point          | 79                 | 36° 39.100' N      | 118° 57.426' W      | Water Source          |                          | 36° 39.926' N      | 118° 57.192' W      |
| Drop Point          | 8                  | 36° 27.396' N      | 118° 54.364' W      | Water Source          |                          | 36° 39.695' N      | 118° 57.219' W      |
| Drop Point          | 80                 | 36° 36.537' N      | 118° 56.946' W      | Water Source          |                          | 36° 44.545' N      | 118° 57.339' W      |
| Drop Point          | 81                 | 36° 36.280' N      | 118° 56.545' W      | Water Source          |                          | 36° 44.311' N      | 118° 57.574' W      |