

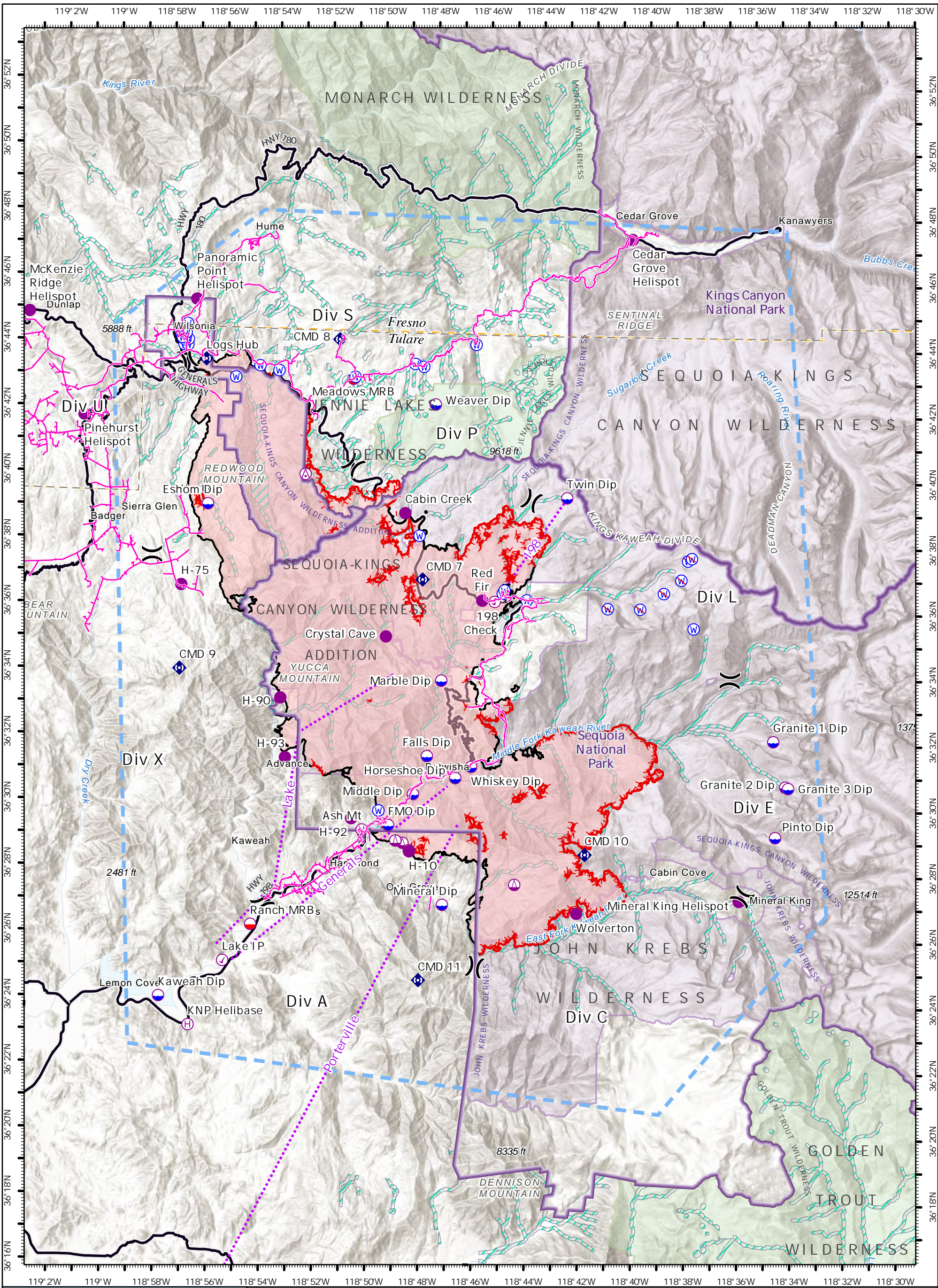
PILOT COORDINATE TABLE



KNP Complex
CA-KNP-000122
10/16/2021



| FC Point Type | Label | Latitude WGS84 DDM | Longitude WGS84 DDM | FC Point Type | Label | Latitude WGS84 DDM | Longitude WGS84 DDM |
|---------------------|------------------------|--------------------|---------------------|-----------------------|--------------------------|--------------------|---------------------|
| Aerial Hazard | | 36° 40.021' N | 118° 52.777' W | Drop Point | 75 | 36° 40.721' N | 118° 56.479' W |
| Airstrip or Airport | Woodlake Airport | 36° 23.909' N | 119° 06.231' W | Drop Point | 76 | 36° 40.993' N | 118° 57.676' W |
| Camp | Church Camp | 36° 47.292' N | 118° 54.937' W | Drop Point | 77 | 36° 38.656' N | 118° 56.807' W |
| Camp | Eshom Valley Spike | 36° 36.560' N | 118° 57.413' W | Drop Point | 78 | 36° 38.858' N | 118° 57.333' W |
| Camp | Horse Creek Campground | | | Drop Point | 79 | 36° 39.100' N | 118° 57.426' W |
| Camp | Hume Lake CG | 36° 47.571' N | 118° 54.516' W | Drop Point | 8 | 36° 27.396' N | 118° 54.364' W |
| Check Point | 198 Check | 36° 36.230' N | 118° 45.536' W | Drop Point | 80 | 36° 36.537' N | 118° 56.946' W |
| Check Point | Lake IP | 36° 25.166' N | 118° 55.568' W | Drop Point | 81 | 36° 36.280' N | 118° 56.545' W |
| Dip Site | Eshom Dip | 36° 39.066' N | 118° 56.444' W | Drop Point | 82 | 36° 31.564' N | 118° 53.467' W |
| Dip Site | Falls Dip | 36° 31.490' N | 118° 47.991' W | Drop Point | 83 | 36° 32.619' N | 118° 53.652' W |
| Dip Site | FMO Dip | 36° 29.370' N | 118° 49.405' W | Drop Point | 9 | 36° 25.687' N | 118° 54.763' W |
| Dip Site | Granite 1 Dip | 36° 30.862' N | 118° 34.712' W | Helibase | Ash Mt | 36° 29.220' N | 118° 50.401' W |
| Dip Site | Granite 2 Dip | 36° 30.722' N | 118° 34.442' W | Helibase | Dunlap Helibase | 36° 43.008' N | 119° 08.289' W |
| Dip Site | Granite 3 Dip | 36° 30.680' N | 118° 34.333' W | Helibase | KNP Helibase | 36° 23.187' N | 118° 56.822' W |
| Dip Site | Horseshoe Dip | 36° 30.837' N | 118° 46.904' W | Helispot | Cabin Creek | 36° 38.883' N | 118° 48.976' W |
| Dip Site | Kaweah Dip | 36° 24.056' N | 118° 57.956' W | Helispot | Cedar Grove Helispot | 36° 47.328' N | 118° 40.556' W |
| Dip Site | Marble Dip | 36° 33.800' N | 118° 47.501' W | Helispot | Crystal Cave | 36° 35.116' N | 118° 49.623' W |
| Dip Site | Middle Dip | 36° 30.330' N | 118° 48.491' W | Helispot | H-10 | 36° 28.583' N | 118° 48.601' W |
| Dip Site | Mineral Dip | 36° 26.970' N | 118° 47.321' W | Helispot | H-75 | 36° 36.589' N | 118° 57.394' W |
| Dip Site | Pinto Dip | 36° 29.176' N | 118° 34.795' W | Helispot | H-90 | 36° 33.197' N | 118° 53.567' W |
| Dip Site | Twin Dip | 36° 39.423' N | 118° 42.864' W | Helispot | H-92 | 36° 29.559' N | 118° 50.807' W |
| Dip Site | Weaver Dip | 36° 42.210' N | 118° 47.900' W | Helispot | H-93 | 36° 31.380' N | 118° 53.351' W |
| Dip Site | Whiskey Dip | 36° 31.191' N | 118° 46.311' W | Helispot | McKenzie Ridge Helispot | 36° 44.840' N | 119° 03.337' W |
| Division Break | | 36° 39.332' N | 118° 44.213' W | Helispot | Mineral King Helispot | 36° 27.218' N | 118° 36.126' W |
| Division Break | | 36° 27.377' N | 118° 36.001' W | Helispot | Panoramic Point Helispot | 36° 45.296' N | 118° 57.009' W |
| Division Break | | 36° 26.945' N | 118° 54.092' W | Helispot | Pinehurst Helispot | 36° 41.726' N | 119° 01.192' W |
| Division Break | | 36° 31.813' N | 118° 38.156' W | Helispot | Red Fir | 36° 36.257' N | 118° 46.007' W |
| Division Break | | 36° 25.093' N | 118° 46.044' W | Mobile Retardant Base | Meadows MRB | 36° 42.946' N | 118° 51.030' W |
| Division Break | | 36° 35.916' N | 118° 55.133' W | Mobile Retardant Base | Ranch MRB | 36° 26.281' N | 118° 54.538' W |
| Division Break | | 36° 43.453' N | 118° 57.327' W | Repeater | CMD 10 | 36° 28.566' N | 118° 41.972' W |
| Division Break | | | | Repeater | CMD 11 | 36° 24.662' N | 118° 48.169' W |
| Drop Point | 1 | 36° 28.604' N | 118° 51.365' W | Repeater | CMD 7 | 36° 36.875' N | 118° 48.2748' W |
| Drop Point | 17 | 36° 27.179' N | 118° 51.740' W | Repeater | CMD 8 | 36° 44.141' N | 118° 51.568' W |
| Drop Point | 2 | 36° 28.900' N | 118° 50.437' W | Repeater | CMD 9 | 36° 34.040' N | 118° 57.403' W |
| Drop Point | 20 | 36° 27.087' N | 118° 47.524' W | Repeater | Logs Hub | 36° 43.480' N | 118° 56.607' W |
| Drop Point | 21 | 36° 26.743' N | 118° 46.587' W | Sling Site | | 36° 27.618' N | 118° 44.607' W |
| Drop Point | 22 | 36° 28.430' N | 118° 46.449' W | Sling Site | | 36° 28.837' N | 118° 48.853' W |
| Drop Point | 23 | 36° 28.688' N | 118° 46.668' W | Sling Site | | 36° 28.902' N | 118° 49.123' W |
| Drop Point | 24 | 36° 28.610' N | 118° 46.863' W | Sling Site | | 36° 28.618' N | 118° 48.609' W |
| Drop Point | 3 | 36° 29.125' N | 118° 50.284' W | Water Source | | 36° 36.292' N | 118° 44.327' W |
| Drop Point | 30 | 36° 25.777' N | 118° 45.728' W | Water Source | | 36° 36.486' N | 118° 45.240' W |
| Drop Point | 31 | 36° 28.009' N | 118° 38.810' W | Water Source | | 36° 36.582' N | 118° 45.172' W |
| Drop Point | 32 | 36° 27.157' N | 118° 36.647' W | Water Source | | 36° 43.433' N | 118° 48.700' W |
| Drop Point | 33 | 36° 27.473' N | 118° 45.890' W | Water Source | | 36° 43.350' N | 118° 48.367' W |
| Drop Point | 34 | 36° 27.934' N | 118° 40.397' W | Water Source | | 36° 44.050' N | 118° 46.400' W |
| Drop Point | 4 | 36° 29.233' N | 118° 50.203' W | Water Source | | 36° 35.498' N | 118° 38.001' W |
| Drop Point | 5 | 36° 29.172' N | 118° 50.460' W | Water Source | | 36° 29.809' N | 118° 49.782' W |
| Drop Point | 50 | 36° 33.283' N | 118° 44.942' W | Water Source | | 36° 38.201' N | 118° 48.424' W |
| Drop Point | 51 | 36° 33.840' N | 118° 46.399' W | Water Source | | 36° 43.007' N | 118° 50.959' W |
| Drop Point | 52 | 36° 33.014' N | 118° 45.975' W | Water Source | | 36° 43.165' N | 118° 53.843' W |
| Drop Point | 6 | 36° 29.551' N | 118° 50.787' W | Water Source | | 36° 43.904' N | 118° 57.455' W |
| Drop Point | 60 | 36° 36.365' N | 118° 46.012' W | Water Source | | 36° 43.899' N | 118° 57.311' W |
| Drop Point | 61 | 36° 36.518' N | 118° 45.201' W | Water Source | | 36° 44.037' N | 118° 57.424' W |
| Drop Point | 62 | 36° 36.300' N | 118° 43.801' W | Water Source | | 36° 44.067' N | 118° 57.296' W |
| Drop Point | 63 | 36° 35.282' N | 118° 45.139' W | Water Source | | 36° 44.106' N | 118° 57.462' W |
| Drop Point | 7 | 36° 29.068' N | 118° 50.287' W | Water Source | | 36° 44.264' N | 118° 57.384' W |
| Drop Point | 70 | 36° 42.121' N | 118° 52.471' W | Water Source | | 36° 44.239' N | 118° 57.585' W |
| Drop Point | 71 | 36° 39.854' N | 118° 50.470' W | Water Source | | 36° 44.118' N | 118° 57.529' W |
| Drop Point | 72 | 36° 43.325' N | 118° 54.538' W | Water Source | | 36° 42.945' N | 118° 55.474' W |
| Drop Point | 725 | 36° 43.447' N | 118° 57.313' W | Water Source | | 36° 43.303' N | 118° 54.564' W |
| Drop Point | 726 | 36° 44.409' N | 118° 57.807' W | Water Source | | 36° 44.545' N | 118° 57.339' W |
| Drop Point | 73 | 36° 38.201' N | 118° 48.448' W | Water Source | | 36° 44.311' N | 118° 57.574' W |
| Drop Point | 74 | 36° 41.409' N | 118° 56.895' W | | | | |



PILOT

KNP Complex
CA-KNP-000122
10/16/2021

87,873 acres at 10/15/2021 1900

1:200,000 - CIIMT2 - 10/15/2021 2213
Acres from IR and GIS
North American 1983 Datum. Lat/Long Grid

- | | | |
|-------------------------|--------------------------------|---------------------------------|
| ⊙ Aerial Hazard | ⊙ Repeater | — Major Roads |
| ⊙ Check Point | ⊙ Water Source | ▭ Wildfire Daily Fire Perimeter |
| ⊙ Dip Site | ⊙ Restricted Water Source | ▭ Park Boundary |
| ⊙ Mobile Retardant Base | ⊙ Route | ▭ NPS Wilderness |
| ⊙ Helispot | — Temporary Flight Restriction | ▭ USFS Wilderness |
| ⊙ Helibase | — Fire Edge | ▭ Retardant Avoidance |
| ⊙ Sling Site | — Contained Line | ▭ County Boundary |
| ⊙ Division Break | — Major Roads | — Powerline |

