

SUNDAY

# KNP COMPLEX NORTH ZONE

CA-KNP-000122 PPN9UH (1522)  
PF.FSN9UH022.00.1

## INCIDENT ACTION PLAN

Operational Period  
10/10/2021 to 10/11/2021  
0700-1900 hrs and 1900-0700 hrs

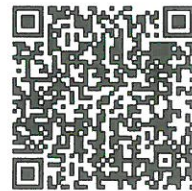
Check-in



Email supporting documentation to:  
2021.knp.checkin@firenet.gov



Maps &  
IAP



Password: knp2021



SUNDAY



**4. OPERATIONAL PERIOD (DATE/TIME): 10/10/2021 to 10/11/2021, Day 0700-1900 / Night 1900-0700**

**5. OBJECTIVES:**

**Strategic Framework**

Implement a full suppression strategy on the KNP Complex Fire. Values at risk include human safety, communities, Sequoia Groves, critical infrastructure, associated improvements, and wilderness values. Apply tactics that offer the highest probability of success commensurate with resource availability.

**Leaders Intent**

Provide the highest level of customer service to all involved with or impacted by the KNP Complex. Ensure transparent, timely and accurate communication at all levels of the incident and strengthen relationships with cooperators. All incident assigned personnel should be prepared to take appropriate actions regarding:

- Professional behavior, conduct, and timely/effective communication.
- Personal safety and the safety of others, including driving slowly and defensively.
- Manage fatigue by taking breaks and maintaining work/rest cycles.
- Minimize risk and limit exposure to infectious disease by minimizing large group settings, social distancing, wearing face coverings, and handwashing.

**Management Objectives**

- Provide for firefighter and public safety through hazard recognition and application of the risk management process.
- Coordinate public information with KNP South Zone to provide timely and continuous information to affected agency partners, cooperators, and to the public.
- Coordinate suppression activities with assigned incident Resource Advisors and Tribal Advisors to minimize impacts to Sequoia Groves, wilderness, natural and cultural resources. Utilize Minimal Impact Suppression Tactics (MIST) where appropriate,

**Control Objectives**

To prevent the fire from spreading to private property, surrounding communities, Sequoia Groves, wilderness, and values at risk, keep the KNP Complex fire:

- West of Deadman Canyon
- South of the Kings River
- East of Dry Creek Road and Hwy 245
- North of the KNP Complex Zone break

Site Safety Plan Required     Yes     No    Approved Site Safety Plan Located at: N/A

**9. Attachments (☑ if attached):**

- |                                 |                             |                    |
|---------------------------------|-----------------------------|--------------------|
| ☑ Organization List (ICS 203)   | ☑ Medical Plan (ICS 206)    | ☑ Finance Message  |
| ☑ Weather Forecast              | ☑ Air Ops (ICS 220)         | ☑ Training Message |
| ☑ Fire Behavior Forecast        | ☑ HR Message                | ☑ Unit Log 214     |
| ☑ Safety Message                | ☑ Assignment List (ICS 204) | ☑ Tentative Demob  |
| ☑ Communications Plan (ICS 205) | ☑ READ/REAF message         | ☑ Site Map         |



<b>10. PREPARED BY (PLANNING SECTION CHIEF)</b> <i>Walker J. Hufny</i>	<b>11. APPROVED BY (INCIDENT COMMANDER)</b> <i>[Signature]</i>
---	---



### ORGANIZATION ASSIGNMENT LIST (ICS 203)

<b>1. Incident Name:</b> KNP COMPLEX NORTH ZONE		<b>2. Operational Period: Date From:</b> 10/10/2021 Time From: 0700		<b>Date To:</b> 10/11/2021 Time To: 0700	
<b>3. Incident Commander(s) and Command Staff:</b>			<b>7. Operation Section:</b>		
IC/UC's	MIKE MINTON; JOHN GOSS (t)	Field Operations	PAT RUSSELL		
Deputy	NICKIE JOHNNY	Planning Ops	MATT CONKLIN; JAKE AKERBERG (t)		
Safety Officer	TIM SAMPSON; RON BERTSCH	Night Ops	JOSH EICHAMER		
Information Officer	MIKE THEUNE; MIKE LINDBERY	Staging Area			
Liaison Officer	ROBBIN EKMAN	<b>Branch</b>	<b>I</b>	<b>MARK GERWE</b>	
<b>Agency/Organization</b>		Division/Group	STRUCTURE 1	JUAN MARTINEZ; LEE HELGESON (t)	
Agency/Organization	Name	Division/Group	L	JORGE AMAYA; ROSS GARLAPOW (t)	
Tulare County Sheriff	LT. GARY MARKS; SGT. JOE ARMSTRONG	Division/Group	P	BRIAN TAI	
Tulare County FD	JEFF MCLAUGHLIN	Division/Group	S	NATHAN SUIDA	
CAL Fire Tulare Unit	ANDY TURNER; CHRIS WATERS	Division/Group	U	MIKE HILDEBRAND; JEFF SINGER (t)	
Sequoia & Kings Canyon NP AA	SUPT. CLAYTON JORDAN	Division/Group	STRUCTURE 2	JOHN SORENSON; NICK DESOTO (t)	
Sequoia & Kings Canyon NP AREP	JAY LUSHER	Division/Group	NIGHT U/S/P/L	CHRISTIAN LOPEZ	
Sequoia NF AA	TERESA BENSON	Division/Group	MRB	DENNIS MORTON (AOBD)	
Sequoia NF AREP	RUTH D'AMICO	Division/Group			
BLM Bakersfield AA	GARY GARCIA; FIELD MANAGER	Division/Group			
BLM CND Fire AREP	MIKE CHIODINI	Division/Group			
CAL OES Fire/Rescue	ASST. CHIEF JAVIER LARA	<b>Branch</b>			
CAL OES LE Branch	ASST. CHIEF JARED MCCORMICK	Division/Group			
CAL Fire FKU	ASST. CHIEF BILLY SEE	Division/Group			
Fresno County Sheriff	LT. KATHY CURTICE	Division/Group			
Fresno County PIO	SONJA DOSTI	Division/Group			
Tribal Liaison	DIRK CHARLEY	<b>Branch</b>			
USFS COVID 19 Coordinator	DAVE FOURNIER/ MARK BUCCOWICH/ CHRIS LOW	Division/Group			
Southern Cal Edison	SCOTT BROWN	Division/Group			
PGE	GEOFF MONEY; CHARLOTTE JORDAN	Division/Group			
AT&T	SHAWN MILLHOUSE	Division/Group			
<b>5. Planning Section:</b>		Division/Group			
Chief	WALTER HERZOG	Division/Group			
Lead Read	DAVE FIRMAGE	Division/Group			
Resource Unit	JAY SHAFFER; RITA MUSTATIA	Division/Group			
Situation Unit	TERRY WILLIAMSON	<b>Branch</b>			
Documentation Unit	BASIA TROUT	Division/Group			
Demobilization Unit	JEFF FERGUSON	Division/Group			
GISS	CARVEL BASS; SAGE REUTER (t)	Division/Group			
FBAN	DENNIS BURNS	Division/Group			
IMET	JIM DUDLEY	Division/Group			
Training Tech Spec	DOMINIC PANNO	<b>Air Operations Branch</b>	<b>Director:</b>	<b>TERRY HARRIS</b>	
Status Check-in	BRYAN SCHELL; ALYSSA THORNBURG	Air Support Group Supervisor	KELVIN MCELFISH		
Long Term Analyst	WES HALL	Air Tactical Group Supervisor	MARK WINKLEMAN		
Air Resource Advisor	ARIANE SARZOTTI	Helibase Manager			
<b>6. Logistics Section</b>					
Chief	THOMAS CRAKES; DAVE KLYM				
Supply Unit	RANDY BROWNING	<b>8. Finance/Administration Section:</b>			
Facilities Unit	JASON HODGE	Chief	LARRY LEE; ROBERT G. TAYLOR		
Ground Support Unit	MIKE FITZGERALD	Time Unit	CASSIE AVILA		
Communications Unit	KEVIN HARPER	Equipment Time	TRACY FALLS		
Medical Unit	SCOTT MOHLENBROK ; ROBERT ETHRIDGE	Personnel Time	ABBY SHAPIRO		
Ordering Manager	CASEY LEWIS	Cost Unit	ANDREA SHANCHEZ (VIRTUAL)		
Food Unit	MARY NAYLER				
RCDM	TROY WARREN				
ITSS	GERALD FONG				
Computer Specialist	TROY WARREN				
<b>Prepared By: Name:</b>	WALTER HERZOG	<b>Position/Title:</b>	PSC	<b>Signature:</b> _____	
<b>ICS 203</b>	<b>Date/Time:</b>	10/9/2021	2300 hours	<b>NIMS IAP</b>	





# INCIDENT Weather Forecast



**FORECAST NO:** 24  
**PREDICTION FOR:** 0700 Sun-0700 Mon  
**SHIFT DATE:** October 10-11, 2021  
**FORECAST ISSUED:** 1800 Saturday October 9

**NAME OF FIRE:** KNP Complex  
**UNIT:** CA-KP  
**SIGNED:** James Dudley  
**Incident Meteorologist**

## WEATHER DISCUSSION

Weak high pressure will remain over the fire area Sunday before an area of low pressure and a mainly dry cold front sweeps into California and the Great Basin on Monday. Although lacking moisture the front will bring a slight chance of rain and snow showers briefly on Monday but little accumulation of rain or snow is expected. Due the sheltering of the surrounding mountains and terrain, the fire area will see winds aloft and over the highest ridges increase on Monday however the vast majority of the fire area will see a minor increase in winds. Colder air will however move into the region and temperatures will be much colder Monday and Tuesday.

### .SUNDAY...

Sky/weather.....Mostly sunny.  
Max temperature....Lower Elevations 60-68. Upper Elevations 52-60.  
Min humidity.....Lower Elevations 22-32%.Upper Elevations 18-28%.  
Wind (20 ft).....  
Slope/valley.....Downslope/downcanyon 2-6 mph through 0800 then becoming upslope 3-7 mph after 1100.  
Ridgetop.....Northwest 5-8 mph.  
Mixing height.....Increasing to around 3700 ft AGL.  
Transport winds....West to northwest around 6 mph.

### .SUNDAY NIGHT...

Sky/weather.....Clear.  
Min temperature....Lower Elevations 43-48. Upper Elevations 29-39.  
Max humidity.....Lower Elevations 42-52%. Upper Elevations 48-52%.  
Wind (20 ft).....  
Slope/valley.....Downslope/downcanyon 3-7 mph.  
Ridgetop.....Northwest 13-18 mph.  
Mixing height.....Lowering to around 1000 ft AGL.  
Transport winds....North around 5 mph.

### .MONDAY...

Sky/weather.....Increasing clouds with a 20 percent chance of rain showers and snow showers. Snow level around 7000 feet.  
Max temperature....Lower Elevations 48-56. Upper Elevations 38-48.  
Min humidity.....Lower Elevations 44-54%.Upper Elevations 54-64%.  
Wind (20 ft).....  
Slope/valley.....Upslope 2-6 mph through 1200 then northwest 3-8 mph through the afternoon.  
Ridgetop.....Northwest 14-17 mph.  
Mixing height.....Increasing to around 4500 ft AGL.  
Transport winds....Northwest around 13 mph.  
CWR.....10 percent.

# FIRE BEHAVIOR FORECAST

<b>FORECAST NUMBER:</b> 3	<b>TYPE OF FIRE:</b> Wildfire
<b>FIRE NAME:</b> North Zone KNP Complex	<b>OPERATIONAL PERIOD:</b> October 10, 2021 24hr
<b>DATE ISSUED:</b> 10/09/21	<b>TIME ISSUED:</b> 2000
<b>UNIT:</b> CA-KNP	<b>SIGNED:</b> _____ <b>Typed/printed:</b> Dennis Burns/s/

## INPUTS

**WEATHER SUMMARY:** \*\*\*Slight Warming before another Cool Down \*\*\*

- Today Temps 52-68 RH 22-32%. Wind, NW 5-8mph..
- Tonight Temps 29-39 RH 48-52% Wind N-NW 13-18mph.

## OUTPUTS

### FIRE BEHAVIOR

**GENERAL:** With the cloud cover that stayed over the zone yesterday RH never got below 40%, little to no forward fire progression is expected today and tonight. Main chances for forward progression will be from rollout. Expect mainly smoldering and creeping fire behavior. However, pockets of heavier fuel will continue to burn along with surface fuels under tight canopies. There is a minimal chance of spot fires from torching trees. The fire will begin to respond to warmer dryer conditions mainly in the heavier fuels, which will become more active.

**ERC: 23 Below average.**

**POI: 40-50% in the afternoon.**

### SPECIFIC:

**Div P:** Most of the fire is in a backing alignment, expect little to no growth on the Division. Rollout will continue. Fuels are becoming more sparse east of the Generals Highway little if any forward progression expected.

**Div U:** No forward fire progression expected. Rollout will continue to challenge containment lines. If fire does get across containment lines, expect slow rates of spread.

**Div S:** Rollout will continue to be problematic. However, no forward fire progression is expected. Areas under the tight canopy have the potential to exhibit active surface fire.

**Div L:** Expect minimal forward fire progression. Pockets of heavy fuels will continue to burn out.

**All Areas:** Spotting from rollout will continue to be problematic. Slope-reversals are probable from any fire burning in drainage bottoms. Mop-up will continue to be extensive.

**AIR OPERATIONS:** Clouds/fog early becoming clear in the late morning/early afternoon.

## SAFETY

- Make sure Lookouts are posted in places where they can see potential spotting.
- Fire weakened timber poses a threat to personnel working in timber areas.
- Unburned fuel between you and the fire.

# Safety Message

## KNP Complex

October 10-11,2021 Operational Period: 0700-0700

### Managing for Cumulative Fatigue

The KNP Complex have been burning 30 plus days. Are you on your fourth or fifth 14-day tour? Fire season still has time left. Will you still be physically able to do this into November?

### Not, if you don't begin managing fatigue now!

Consider the following points to management fatigue so that you can finish healthy & safe

- The first step toward becoming a good decision maker on the fire line is to recognize that fatigue hampers your ability to make appropriate decisions - fatigue affects everyone. Fatigue has an impact on risk taking.
- Studies that focus on how lack of sleep affects work performance during long shifts agree, for people to perform well they should average one hour of sleep for every 2 hours of work.
- Fatigue prevention includes hydration and temperature control. It is recommended for a person to drink at least two gallons of water per shift.
- Breaks are a hedge against fatigue. For example, without frequent 10-to-30-minute rest breaks between work operations, fatigue can rapidly overtake you. Breaks of 10 minutes or more keep performance from declining. The number and length of breaks should increase after 8 hours, because fatigue builds through-out a shift.
- Smoke and carbon monoxide are present on the typical wildfire. Some exposure is unavoidable. Your objective must be to limit exposure. Too much exposure causes headaches, fatigue, drowsiness, some impaired motor performance, decision making, and cognitive functions.
- Pace yourself on the job. Heat tolerance differs among personnel. If you push too hard to keep up with others, you may not last the shift.

**Go slow to Go fast!**

**If you must stop to fix something or treat an injury you never get ahead.**

**CIIMT2 Safety Officers: Tim Sampson SOF1, Ron Bertsch SOF1**



# ASSIGNMENT LIST (ICS 204 WF)

CONTROLLED UNCLASSIFIED  
INFORMATION//BASIC

<b>1. Incident Name:</b> <b>KNP COMPLEX NORTH ZONE</b>	<b>2. Operational Period:</b> Date From: 10/10/21    Date To: 10/11/21 Time From: 0700    Time To: 0700	<b>3. Branch</b> <b>Division</b> <b>I</b> <b>STRUCTURE 1</b>
---	---	---

<b>4. Operations Personnel:</b>		Page 1 of 2
Operations Section Chief: <b>PAT RUSSELL</b>	Night Ops: <b>JOSH EICHAMER</b>	
Branch Director: <b>MARK GERWE</b>	Branch Safety: <b>TONY PETRELLI SOF1</b>	
Division/Group Supervisor: <b>JUAN MARTINEZ; LEE HELGESON (t)</b>	Air Attack: <b>MARK WINKLEMAN</b>	

<b>5. Resources Assigned:</b>		<b>** Resources Below in Bold are 12 Hour **</b>					
Resource Identifier	LWD	Leader	Personnel	Request #	Hours	Reporting Location	
<b>*HC2 BLACK EAGLES 3</b>	<b>10/16</b>	<b>MERRITT CUTTEN</b>	<b>21</b>	<b>C-56</b>	<b>0700-1900</b>	<b>HUME LAKE CG</b>	
<b>--GENERALS HWY TASK FORCE--</b>							
TFLD	10/12	<b>VICTOR BARRIOS</b>	1	<b>O-515</b>	<b>0700-1900</b>	<b>HUME LAKE CG</b>	
TFLD (t)	10/17	<b>WILLY MELENDEZ</b>	1	<b>O-678</b>	<b>0700-1900</b>	<b>HUME LAKE CG</b>	
ENG3 CA-SQF 21	10/11	<b>CHRIS MORALES</b>	4	<b>E-412</b>	<b>0700-1900</b>	<b>HUME LAKE CG</b>	
ENG3 CA-SQF 324	10/11	<b>ALEX BEARRERA</b>	4	<b>E-417</b>	<b>0700-1900</b>	<b>HUME LAKE CG</b>	
ENG3 AZ-PNF 930	10/11	<b>AUSTIN LANGHAM</b>	6	<b>E-403</b>	<b>0700-1900</b>	<b>HUME LAKE CG</b>	
ENG3 AZ-PNP	10/11	<b>DAVID MANJUVAR</b>	3	<b>E-393</b>	<b>0700-1900</b>	<b>HUME LAKE CG</b>	
WT T1 32	10/11	<b>JEFF BULARD</b>	2	<b>E-232</b>	<b>0700-1900</b>	<b>HUME LAKE CG</b>	
WT T1 6191	10/11	<b>MARK ROLAND</b>	2	<b>E-235</b>	<b>0700-1900</b>	<b>HUME LAKE CG</b>	
<b>--REDWOOD TASK FORCE--</b>							
ENG6 JOSEPH CITY 2215	10/11	<b>JERRY MCGRAW</b>	3	<b>E-394</b>	<b>0700-1900</b>	<b>HUME LAKE CG</b>	
ENG6 BUCKSKIN 11	10/12	<b>JASON WEATHERFORD</b>	4	<b>E-409</b>	<b>0700-1900</b>	<b>HUME LAKE CG</b>	
WT T2 CA-SQF 2	10/12	<b>JAMIE AYALLA</b>	2	<b>E-424</b>	<b>0700-1900</b>	<b>HUME LAKE CG</b>	

**6. Work Assignments:**  
Provide for structure protection and preparation in Hartland, Eshom Valley, Grant Grove, Wilsonia, Quail Flat, Montecito Sequoia Lodge, Far Horizons Camp, Camp San Joaquin, Stony Creek Lodge, and Cabin Creek. Work with READS to assist and prep Grant Grove, Big Stump, Bear Skin, Lost Grove, and Redwood Mountain Grove to minimize Sequoia mortality from high intensity fire.

**7. Special Instructions:**  
(\* ) Indicates available for initial attack.  
Continue to size-up and assess any additional contingency line planning.  
Utilize Collector to establish drop points, potential helispots, etc. and to document daily accomplishments.  
Ambulances are available to all Branch I resources, communicate response plans effectively.

<b>8. Communications</b>							
Name	Ch	Function	Rx Freq	Rx Tone	Tx Freq	Tx Tone	Notes
CMD 8	8	COMMAND	170.0000	136.5	166.6750	136.5	
TAC 3	3	TACTICAL	168.6000	151.4	168.6000	151.4	
A/G TAC	14	A/G TAC	162.1875		162.1875		
AIRGUARD V3	16	AIRGUARD	168.6250N		168.6250N	T1 - 110.9	

**9. Prepared by: Name:** JAY SHAFFER; RITA MUSTATIA    RESL  
Signature:

**ICS 204**    Date/Time: 10/9/2021 2200    Personnel Count: 32



# ASSIGNMENT LIST (ICS 204 WF)

CONTROLLED UNCLASSIFIED  
INFORMATION//BASIC

<b>1. Incident Name:</b> <b>KNP COMPLEX NORTH ZONE</b>	<b>2. Operational Period:</b> Date From: 10/10/21    Date To: 10/11/21 Time From: 0700    Time To: 0700	<b>3. Branch</b> <b>Division</b> <b>I</b> <b>STRUCTURE 1</b>
---	---	---

<b>4. Operations Personnel:</b>		Page 2 of 2
Operations Section Chief: <b>PAT RUSSELL</b>	Night Ops: <b>JOSH EICHAMER</b>	
Branch Director: <b>MARK GERWE</b>	Branch Safety: <b>TONY PETRELLI SOF1</b>	
Division/Group Supervisor: <b>JUAN MARTINEZ; LEE HELGESON (t)</b>	Air Attack: <b>MARK WINKLEMAN</b>	

<b>5. Resources Assigned:</b>		<b>** Resources Below in Bold are 12 Hour **</b>					
Resource Identifier	LWD	Leader	Personnel	Request #	Hours	Reporting Location	
<b>STRIKE TEAM GRANT GROVE</b>							
<b>STEN 2328C SANTA CRUZ</b>	<b>10/17</b>	<b>ANDREW LOFRANCO</b>	<b>1</b>	<b>E-477.1</b>	<b>0700-1900</b>	<b>HUME LAKE CG</b>	
<b>STRIKE TEAM WILSONIA</b>							
<b>STEN 4811C SACRAMENTO</b>	<b>10/17</b>	<b>JEFF TAYLOR</b>	<b>1</b>	<b>479.1</b>	<b>0700-1900</b>	<b>HUME LAKE CG</b>	
<b>REAF</b>	<b>10/15</b>	<b>RITA MORRIS</b>	<b>1</b>	<b>O-555</b>	<b>0700-1900</b>	<b>HUME LAKE CG</b>	
<b>REAF (t)</b>	<b>10/19</b>	<b>JOHN DEANE</b>	<b>1</b>	<b>O-615</b>	<b>0700-1900</b>	<b>HUME LAKE CG</b>	
<b>READ</b>	<b>10/12</b>	<b>TONY CAPRIO</b>	<b>1</b>	<b>O-242</b>	<b>0700-1900</b>	<b>HUME LAKE CG</b>	
<b>READ</b>	<b>10/12</b>	<b>LAUREN IM</b>	<b>1</b>	<b>O-233</b>	<b>0700-1900</b>	<b>HUME LAKE CG</b>	
<b>ARCH</b>	<b>10/16</b>	<b>DAVID NEISS</b>	<b>1</b>	<b>O-473</b>	<b>0700-1900</b>	<b>HUME LAKE CG</b>	

**6. Work Assignments:**  
Provide for structure protection and preparation in Hartland, Eshom Valley, Grant Grove, Wilsonia, Quail Flat, Montecito Sequoia Lodge, Far Horizons Camp, Camp San Joaquin, Stony Creek Lodge, and Cabin Creek. Work with READS to assist and prep Grant Grove, Big Stump, Bear Skin, Lost Grove, and Redwood Mountain Grove to minimize Sequoia mortality from high intensity fire.

**7. Special Instructions:**  
(\* ) Indicates available for initial attack.  
Continue to size-up and assess any additional contingency line planning.  
Utilize Collector to establish drop points, potential helispots, etc. and to document daily accomplishments.  
Ambulances are available to all Branch I resources, communicate response plans effectively.

<b>8. Communications</b>							
Name	Ch	Function	Rx Freq	Rx Tone	Tx Freq	Tx Tone	Notes
CMD 8	8	COMMAND	170.0000	136.5	166.6750	136.5	
TAC 3	3	TACTICAL	168.6000	151.4	168.6000	151.4	
A/G TAC	14	A/G TAC	162.1875		162.1875		
AIRGUARD V3	16	AIRGUARD	168.6250N		168.6250N	T1 - 110.9	

**9. Prepared by: Name:** JAY SHAFFER; RITA MUSTATIA    RESL    Signature: W.H.  
**ICS 204**    Date/Time: 10/9/2021 2200    Personnel Count: 7





# ASSIGNMENT LIST (ICS 204 WF)

CONTROLLED UNCLASSIFIED  
INFORMATION//BASIC

<b>1. Incident Name:</b> <b>KNP COMPLEX NORTH ZONE</b>	<b>2. Operational Period:</b> Date From: 10/10/21    Date To: 10/11/21 Time From: 0700    Time To: 0700	<b>3. Branch</b> <b>Division</b> <b>I</b> <b>P</b> Page 1 of 2    Papa
---	---	--

<b>4. Operations Personnel:</b> Operations Section Chief: <b>PAT RUSSELL</b> Branch Director: <b>MARK GERWE</b> Division/Group Supervisor: <b>BRIAN TAI</b>	Night Ops: <b>JOSH EICHAMER</b> Branch Safety: <b>TONY PETRELLI SOF1</b> Air Attack: <b>MARK WINKLEMAN</b>
--	--

5. Resources Assigned:		** Resources Below in Bold are 12 Hour **					
Resource Identifier	LWD	Leader	Personnel	Request #	Hours	Reporting Location	
HC1 GROVELAND	10/20	<b>TIM MARKIN</b>	20	<b>C-67</b>	<b>0700-1900</b>	<b>HUME LAKE CG</b>	
HC1 INYO	10/23	<b>JAMES GRUWELL</b>	18	<b>C-73</b>	<b>0700-1900</b>	<b>HUME LAKE CG</b>	
HC1 FULTON	10/23	<b>JOSH ACOSTA</b>	20	<b>C-78</b>	<b>0700-1900</b>	<b>HUME LAKE CG</b>	
HC2IA UKONOM	10/10	<b>JOEL BERG</b>	18	<b>C-65</b>	<b>0700-1900</b>	<b>HUME LAKE CG</b>	
ST ENG3 3201C	10/17	<b>SHAWN PLAMMER</b>	20	<b>E-478</b>	<b>0700-1900</b>	<b>HUME LAKE CG</b>	
ENG3 CA-STF 43	10/10	<b>DEX EDWARDS</b>	4	<b>E-362</b>	<b>0700-1900</b>	<b>HUME LAKE CG</b>	
ENG3 CA-LPF 337	10/10	<b>OWEN CLIFT</b>	5	<b>E-375</b>	<b>0700-1900</b>	<b>HUME LAKE CG</b>	
ENG3 BUCK MEADOWS 342	10/10	<b>KURT EDWARDS</b>	5	<b>E-361</b>	<b>0700-1900</b>	<b>HUME LAKE CG</b>	
TFLD (t)	10/10	<b>MIKE PETERS</b>	1	<b>C-65.1</b>	<b>0700-1900</b>	<b>HUME LAKE CG</b>	
--GENERAL GRANT TASK FORCE--							
TFLD (t)	10/17	<b>WILLY MELENDEZ</b>	1	<b>O-678</b>	<b>0700-1900</b>	<b>HUME LAKE CG</b>	
TFLD (t)	10/18	<b>ALEXIS CASTRO</b>	1	<b>O-517</b>	<b>0700-1900</b>	<b>HUME LAKE CG</b>	
ENG4 NV-HTF 451	10/10	<b>KYLE WALKER</b>	5	<b>E-563</b>	<b>0700-1900</b>	<b>HUME LAKE CG</b>	
ENG4 FIRECO 104	10/14	<b>CAMDEN MCCALLISTER</b>	3	<b>E-564</b>	<b>0700-1900</b>	<b>HUME LAKE CG</b>	
ENG6 LATE SUMMERS	10/13	<b>NOLAN ETTENHOFER</b>	3	<b>E-566</b>	<b>0700-1900</b>	<b>HUME LAKE CG</b>	
ENG3 LAKE MEAD 7331	10/18	<b>JOEL OGUINICK</b>	6	<b>E-517</b>	<b>0700-1900</b>	<b>HUME LAKE CG</b>	
ENG6 DIAMOND FIRE 6320	10/19	<b>TYLER DYER</b>	3	<b>E-487</b>	<b>0700-1900</b>	<b>HUME LAKE CG</b>	
FMOD UNDERDOG	10/20	<b>RICHARD BROWN</b>	2	<b>O-729</b>	<b>0700-1900</b>	<b>HUME LAKE CG</b>	

**6. Work Assignments:**  
 Mop up and patrol along the Generals Hwy. Continue to prep indirect line connecting to the Generals Hwy near Stoney Creek to minimize the fire from impacting values at risk.  
 Construct direct fire line from Generals Hwy west into Div. Sierra.

**7. Special Instructions:**  
 (\*) Indicates available for initial attack.  
 Continue to size-up and assess any additional contingency line planning.  
 Utilize Collector to establish drop points, potential helispots, etc. and to document daily accomplishments.  
 Ambulances are available to all Branch I resources, communicate response plans effectively.

**8. Communications**

Name	Ch	Function	Rx Freq	Rx Tone	Tx Freq	Tx Tone	Notes
CMD 8	8	COMMAND	170.0000	136.5	166.6750	136.5	
TAC 2	2	TACTICAL	168.2500	151.4	168.2500	151.4	
A/G TAC	14	A/G TAC	162.1875		162.1875		
AIRGUARD V3	16	AIRGUARD	168.6250N		168.6250N	T1 - 110.9	

**9. Prepared by: Name:** JAY SHAFFER; RITA MUSTATIA    RESL  
 Signature: W.H.  
**ICS 204**    Date/Time: 10/9/2021 2200    Personnel Count: 135





# ASSIGNMENT LIST (ICS 204 WF)

CONTROLLED UNCLASSIFIED  
INFORMATION/BASIC

<b>1. Incident Name:</b>		<b>2. Operational Period:</b>				<b>3. Branch</b>		<b>Division</b>	
<b>KNP COMPLEX NORTH ZONE</b>		Date From: 10/10/21	Date To: 10/11/21			<b>I</b>	<b>S</b>		
		Time From: 0700	Time To: 0700			Page 1 of 1		Sierra	
<b>4. Operations Personnel:</b>									
Operations Section Chief: <b>PAT RUSSELL</b>					Night Ops: <b>JOSH EICHAMER</b>				
Branch Director: <b>MARK GERWE</b>					Branch Safety: <b>TONY PETRELLI SOF1</b>				
Division/Group Supervisor: <b>NATHAN SUIDA</b>					Air Attack: <b>MARK WINKLEMAN</b>				
<b>5. Resources Assigned:</b>									
<b>** Resources Below in Bold are 12 Hour **</b>									
Resource Identifier		LWD	Leader	Personnel	Request #	Hours	Reporting Location		
<b>HC1 ARROYO GRANDE</b>		<b>10/12</b>	<b>PHIL HERNANDEZ</b>	21	<b>C-36</b>	<b>0700-1900</b>	<b>HUME LAKE CG</b>		
<b>HC1 CHIEF MOUNTAIN</b>		<b>10/18</b>	<b>KYLE GODDARD</b>	19	<b>C-44</b>	<b>0700-1900</b>	<b>HUME LAKE CG</b>		
<b>HC1 CRANE VALLEY</b>		<b>10/23</b>	<b>MATTHEW DUNLAP</b>	22	<b>C-74</b>	<b>0700-1900</b>	<b>HUME LAKE CG</b>		
<b>--EAST TASK FORCE--</b>									
<b>TFLD (t)</b>		<b>10/18</b>	<b>MATT LANCASTER</b>	1	<b>O-621</b>	<b>0700-1900</b>	<b>HUME LAKE CG</b>		
<b>HC2IA COBRA 2</b>		<b>10/15</b>	<b>ARTURO ZEPEDA</b>	20	<b>C-49</b>	<b>0700-1900</b>	<b>HUME LAKE CG</b>		
<b>HC2 COBRA 6</b>		<b>10/19</b>	<b>RAY BAIRE</b>	20	<b>C-62</b>	<b>0700-1900</b>	<b>HUME LAKE CG</b>		
<b>HC2 FRANCO 4</b>		<b>10/16</b>	<b>FLORENCIO FRANCO</b>	20	<b>C-53</b>	<b>0700-1900</b>	<b>HUME LAKE CG</b>		
<b>HC2 FRANCO 7</b>		<b>10/10</b>	<b>ALEX CORONADO</b>	20	<b>C-55</b>	<b>0700-1900</b>	<b>HUME LAKE CG</b>		
<b>FMOD ART OF FELLING</b>		<b>10/21</b>	<b>BRENNEN MILLER</b>	2	<b>O-293</b>	<b>0700-1900</b>	<b>HUME LAKE CG</b>		
<b>ST ENG3 6608C</b>		<b>10/20</b>	<b>CRAWFORD GUNN</b>	27	<b>E-549</b>	<b>0700-1900</b>	<b>HUME LAKE CG</b>		
<b>ENG3 CONCHO</b>		<b>10/12</b>	<b>JASON CRAVEN</b>	4	<b>E-410</b>	<b>0700-1900</b>	<b>HUME LAKE CG</b>		
<b>ENG3 AVONDALE BRUSH 171</b>		<b>10/12</b>	<b>WILLIAM BROTT</b>	4	<b>E-405</b>	<b>0700-1900</b>	<b>HUME LAKE CG</b>		
<b>*ENG3 CA-SQF 331</b>		<b>10/17</b>	<b>JOSE RIVERA</b>	6	<b>E-490</b>	<b>0700-1900</b>	<b>HUME LAKE CG</b>		
<b>*ENG3 CA-SQF 332</b>		<b>10/17</b>	<b>DALTON WORKMAN</b>	5	<b>E-484</b>	<b>0700-1900</b>	<b>HUME LAKE CG</b>		
<b>WTS1 A-1 WATER</b>		<b>10/20</b>	<b>RAYMOND BARKER</b>	1	<b>E-559</b>	<b>0700-1900</b>	<b>HUME LAKE CG</b>		
<b>DOZ2 HUCKABY</b>		<b>10/12</b>	<b>DAVIND STINES</b>	2	<b>E-243</b>	<b>0700-1900</b>	<b>HUME LAKE CG</b>		
<b>SKD1 PVT IND. LOG</b>							<b>HUME LAKE CG</b>		
<b>READ</b>		<b>10/12</b>	<b>DAVID OROZCO</b>	1		<b>0700-1900</b>	<b>HUME LAKE CG</b>		
<b>EMPF</b>		<b>10/11</b>	<b>LUKE GRANGER</b>	1	<b>O-494</b>	<b>0700-1900</b>	<b>HUME LAKE CG</b>		
<b>SOF2</b>		<b>10/23</b>	<b>LEE FREEMAN</b>	1		<b>0700-1900</b>	<b>HUME LAKE CG</b>		
<b>6. Work Assignments:</b>									
Mop up and patrol direct line from the Div S/U break to the East. Scout for direct line opportunities south from Montecito Sequoia lodge connecting to Stoney Creek to minimize impacts to the values at risk.									
<b>7. Special Instructions:</b>									
(*) Indicates available for initial attack. Continue to size-up and assess any additional contingency line planning. Utilize Collector to establish drop points, potential helispots, etc. and to document daily accomplishments. Ambulances are available to all Branch I resources, communicate response plans effectively.									
<b>8. Communications</b>									
Name	Ch	Function	Rx Freq	Rx Tone	Tx Freq	Tx Tone	Notes		
CMD 8	8	COMMAND	170.0000	136.5	166.6750	136.5			
TAC 1	1	TACTICAL	168.0500	151.4	168.0500	151.4			
A/G TAC	14	A/G TAC	162.1875		162.1875				
AIRGUARD V3	16	AIRGUARD	168.6250N		168.6250N	T1 - 110.9			
<b>9. Prepared by: Name:</b>									
JAY SHAFFER; RITA MUSTATIA			RESL			Signature: <u>W.H.</u>			
<b>ICS 204</b>		Date/Time: 10/9/2021 2200				Personnel Count: 196			













# ASSIGNMENT LIST (ICS 204 WF)

CONTROLLED UNCLASSIFIED  
INFORMATION//BASIC

<b>1. Incident Name:</b>	<b>2. Operational Period:</b>	<b>3. Branch</b>	<b>Division</b>
<b>KNP COMPLEX NORTH ZONE</b>	Date From: 10/10/21      Date To: 10/11/21 Time From: 0700              Time To: 0700	<b>I</b>	<b>NIGHT U/S/P/L</b>

<b>4. Operations Personnel:</b>			
Operations Section Chief: <b>PAT RUSSELL</b>	Night Ops: <b>JOSH EICHAMER</b>		
Branch Director: <b>MARK GERWE</b>	Branch Safety: <b>TONY PETRELLI SOF1</b>		
Division/Group Supervisor: <b>CHRISTIAN LOPEZ</b>	Air Attack: <b>MARK WINKLEMAN</b>		

<b>5. Resources Assigned:</b>		<b>** Resources Below in Bold are 12 Hour **</b>					
Resource Identifier	LWD	Leader	Personnel	Request #	Hours	Reporting Location	
HC1 LITTLE TUJUNGA	10/12	<b>JOSEPH BONTON</b>	19	<b>C-41</b>	<b>1900-0700</b>	<b>HUME LAKE CG</b>	
HC2 BLACK EAGLES 6	10/19	<b>ROGER BETANCOURT</b>	20	<b>C-63</b>	<b>1900-0700</b>	<b>HUME LAKE CG</b>	
HC2 COBRAS 5	10/18	<b>TED ROACH</b>	20	<b>C-58</b>	<b>1900-0700</b>	<b>HUME LAKE CG</b>	
SMOD HORSESHOE MEADOW	10/16	<b>CANDICE KUTROSKY</b>	16	<b>O-685</b>	<b>1900-0700</b>	<b>HUME LAKE CG</b>	
ST ENG3 5600C	10/20	<b>BRIAN VASQUEZ</b>	21	<b>E-551</b>	<b>1900-0700</b>	<b>HUME LAKE CG</b>	
ST ENG3 3201C	10/17	<b>SHAWN PLAMMER</b>	20	<b>E-478</b>	<b>1900-0700</b>	<b>HUME LAKE CG</b>	
ENG3 SOUTH METRO FIRE	10/14	<b>BRIAN CROGAN</b>	4	<b>E-406</b>	<b>1900-0700</b>	<b>HUME LAKE CG</b>	
ENG3 ARIZONA 331	10/14	<b>TRAVIS ADOCK</b>	4	<b>E-363</b>	<b>1900-0700</b>	<b>HUME LAKE CG</b>	
ENG3 CA-SHF 362	10/17	<b>CHRIST LAXTON</b>	5	<b>E-485</b>	<b>1900-0700</b>	<b>HUME LAKE CG</b>	
ENG3 CA-SQF 323	10/17	<b>JUAN ANDRADE</b>	5	<b>E-519</b>	<b>1900-0700</b>	<b>HUME LAKE CG</b>	
ENG4 ROCKY MOUNTAIN 5						<b>HUME LAKE CG</b>	
ENG6 GLOBAL FRONTLINE	10/10	<b>PRUETT WESLEY</b>	3	<b>E-351</b>	<b>1900-0700</b>	<b>HUME LAKE CG</b>	
DOZ2 9438L	10/13	<b>BRYAN GARABEDIAN</b>	8	<b>E-256</b>	0700-0700	<b>HUME LAKE CG</b>	
DOZ2 9448L	10/13	<b>ROGER PETERSEN</b>	6	<b>E-259</b>	0700-0700	<b>HUME LAKE CG</b>	
EMPF	10/14	<b>BUZZ STILLMAN</b>	1	<b>O-355</b>	<b>1900-0700</b>	<b>HUME LAKE CG</b>	
RAT 2	10/15	<b>PHIL WURR</b>	2	<b>E-454</b>	<b>1900-0700</b>	<b>HUME LAKE CG</b>	

**6. Work Assignments:**  
Patrol, mop up, and monitor current containment lines to minimize potential for fire crossing containment lines.

**7. Special Instructions:**  
Continue to size-up and assess any additional contingency line planning.  
Utilize Collector to establish drop points, potential helispots, etc. and to document daily accomplishments.  
Ambulances are available to all Branch I resources, communicate response plans effectively.

<b>8. Communications</b>							
Name	Ch	Function	Rx Freq	Rx Tone	Tx Freq	Tx Tone	Notes
CMD 6	6	COMMAND	171.8625	136.5	164.8625	136.5	
TAC 4	4	TACTICAL	166.7250	151.4	166.7250	151.4	
A/G TAC	14	A/G TAC	162.1875		162.1875		
AIRGUARD V3	16	AIRGUARD	168.6250N		168.6250N	T1 - 110.9	

**9. Prepared by: Name:** JAY SHAFFER; RITA MUSTATIA      RESL  
Signature: \_\_\_\_\_  
**ICS 204**      Date/Time: 10/9/2021 2200      Personnel Count: 151





Controlled Unclassified Information/Basic

<b>AIR OPERATIONS SUMMARY 220</b>		Prepared By: Terry Harris	Prepared: 10/09/2021	Prepared Time: 1900hrs.
<b>1. KNP Complex</b>	<b>2. OPERATIONAL PERIOD</b> 10/10/2021	<b>START TIME:</b> 0700	<b>END TIME:</b> 2000	<b>SUNRISE:</b> 0700
				<b>SUNSET:</b> 1828

<b>3. REMARKS</b> (Safety Notes, Hazards, Air Operations Special Equipment, etc.)	<b>4. READY ALERT AIRCRAFT:</b>	<b>5. TFR:</b>
<ul style="list-style-type: none"> <li>Drafting water from Hume Lake is only approved to support MRB and gel ops.</li> <li>If doing bucket work outside of the Park, buckets must be decontaminated prior to reusing Park dip sites.</li> <li>All GPS data to be collected in DEGREES, MINUTES, DECIMAL MINUTES format.</li> <li>Avoid Aerial Application of retardant/foam/agent within 300' of waterways, bodies of water, etc.</li> <li><b>CAUTION: POWERLINES AND SMOKE</b></li> <li><b>CAUTION:</b> Possible Paraglider activity near Dunlap Helibase.</li> <li><b>DIP SITES:</b> Notify Helibase of any new dip sites with Coordinates</li> <li><b>HELLSPOTS:</b> Notify Helibase of any new hellspots with Coordinates/ Info</li> </ul>	<p>See Medical Plan in the IAP</p> <p>Closest Short Haul  <b>N836PA</b> (H-552)                      Larrissa Perez                      559-269-6484                      @ KNP Helibase</p>	<p><b>NOTAM# 1/1892 - 1/1889</b>                      Alt: 13,500 ft.                      Frequency: 121.0750                      24 Hours</p> <p>36°47'39"N x 118°34'44"W                      36°26'49"N x 118°32'49"W                      36°20'41"N x 118°39'02"W                      36°22'35"N x 118°59'05"W                      36°44'27"N x 119°00'09"W                      36°48'03"N x 118°54'30"W</p>

6. PERSONNEL	NAME	PHONE #	7. FREQUENCIES	AM	FM	8. FIXED-WING Avail/ Type/ Make-Model/ NH/ Base
AOBD (S.Zone)	Galen Young	575-574-8720	A/A Primary	121.0750		AIRTANKERS, SEATS, AIR ATTACK-ORDER THRU ASH MOUNTAIN FIRE DISPATCH
			A/A Briefing	124.4250		ORDER AIRCRAFT THRU ATGS OR KNP HELIBASE
			A/A Rotor	132.5250		VLATs and Heavy Air Tankers available in Porterville and Fresno
			Air Tac Fixed Wing		168.4000	
AOBD (N.Zone)	Terry Harris	936-366-4239	A/G Command		168.3375	
ASSG	Kevin McElfish	909-907-2677				
KNP HEBM	Mark Rudkin	307-287-0440	A/G Tac Branch I		162.1875	Cost Email: <a href="mailto:andrea.sanchez@firenet.gov">andrea.sanchez@firenet.gov</a>
Dunlap HEBM	Jael Constantino	619-536-3480	A/G Tac Branch II		167.0625	
ATGS-5DT	Mark Winkleman	775-848-9983	Deck		163.1000	Include the word "cost" on your subject line
ATGS-15 (OPQ)	Mark Berticilli	559-779-1108				
HLCO-9AC	Brad Corbin	661-965-8680	A/G Calcord		156.0750	
HLCO-7XL	David Smith	530-307-9171			RX/TX Tone 156.7	
UAS R31 (Night)	Joe Suarez	559-285-9128	Command Milk Ranch		TX 165.600	
UAS R32 (Night)	Joe Milligan	530-524-2614	linked to	RX 171.6750	Tone 167.9	
UAS R33 (Day)	Chris Mariano	530-913-7789	Cmd 1&2 via relay			
Ash Mountain	Dispatch	559-782-3120 EXT: 708	Air Guard		168.6250 (110.9 TX)	

Controlled Unclassified Information/Basic

ICS 220 - Continued

9. HELICOPTERS

FAA #	TY	MAKE/ MODEL	BASE	START	AVAIL	REMARKS	FAA #	TY	MAKE/ MODEL	BASE	START	AVAIL	REMARKS
836PA H552	3	AS350B3	KNP	0700	0800	Medical, H <sub>2</sub> O, Recon	16HX H538	2	Bell 205A-1++	Dunlap	0700	0800	Bucket, Cargo
215GH	3	AS350B3	KNP	0700	0800	Recon, H <sub>2</sub> O	674TH	1	K-max	Dunlap	0700	0800	Bucket
78EC H554	2	Bell 205 A-1	KNP	0700	0800	Bucket, PAX, Cargo	877XL	3	AS350B3	Visalia	0700	0800	HLCO
612TA H528	2	Bell 212HP	KNP	0700	0800	Bucket, PAX, Cargo	719HT	1	CH-54B	Visalia	0700	0800	Tanked
205BD	2	Bell 205A-1++	KNP	0700	0800	Bucket, Rappel	722HT	1	CH-54B	Visalia	0700	0800	Tanked
357KA	1	K-Max	KNP	0700	0800	Bucket	620TJ	1	UH-60	Reedley	0700	0800	Bucket
669AC	3	AS-350-B3	Dunlap	0700	0800	HLCO	561AJ	1	CH-47	Reedley	0700	0800	Bucket

10. TASK/ MISSION/ ASSIGNMENT (Type/ function includes: Air Tactical, Retardant, Recon, Personnel Transport, Bucket Operations, SAR, etc.)												
TYPE/FUNCTION	PRIORITY	NAME OF PERSONNEL OR CARGO (If applicable) or instructions for tactical aircraft										
ATGS		Provide coverage as needed over the fire. Request through Ops.										
Recon		Fire reconnaissance by Ops.										
Water Drops		As needed and approved by OPS, order through DIVS or ATGS.										
HLCO		Coordination of Helicopters.										

Helibase, Dip Sites, Pick Up Sites, etc.		Helibase, Dip Sites, Pick Up Sites, etc.	
36° 23.187 x 118° 56.822	KNP Helibase	See Pilot Map	
36° 43.006 x 119° 08.304	Dunlap Helibase (2100')		
36° 29.220 x 118° 50.401	Ash Mountain Helibase (unstaffed)		
36° 26.323 x 118° 54.511	Ranch MRB		
36° 42.884 x 118° 51.030	Meadows MRB		

Flights above ground level		Wind Restrictions	
More than 500' AGL	Type 1 Helicopters <50kts / Gusts: N/A	Less than / Maximum Gust Spread	Flight Permitted in Winds
Less than 500' AGL	<40kts / Max Gust Spread: 15kts	<40 kts / Max Gust Spread: 15kts	Type 2 Helicopters <50kts / Gusts: N/A
			Type 3 Helicopters <50kts / Gusts: N/A



# SOUTH ZONE

INCIDENT RADIO		Incident Name		Date/Time Prepared		Operational Period Date/Time					
<b>COMMUNICATIONS PLAN (ICS 205)</b>		<b>KNP Complex South Zone Branch 2</b>		<b>10/09/2021 1900</b>		<b>10/10/2021 0700 - 10/11/2021 0700</b>					
Utilization of any frequency other than those listed on this form are prohibited, subject to fines by the FCC and demobilization from the incident.											
Zn Ch	Function	Name/Trunked Radio <small>Channel Subchannel Talkgroup</small>	Assignment	RX Freq N or W	Tone/NAC	TX Freq N or W	TX Tone/NAC	Dev	Pwr	A, D or M	Remarks
1	TACTICAL	TAC 1	DIV A	168.0500	Tone 14 151.4	168.0500	Tone 14 151.4	N	L	A	DIV A
2	TACTICAL	TAC 2	MIN KING/CONTNGCY	168.2500	Tone 14 151.4	168.2500	Tone 14 151.4	N	L	A	MIN KING/CONTINGENCY
3	TACTICAL	TAC 3	DIV C/NIGHT SHIFT SOUTH	168.6000	Tone 14 151.4	168.6000	Tone 14 151.4	N	L	A	DIV C/NIGHT SHIFT SOUTH
4	TACTICAL	TAC 4	DIV Z, X	166.7250	Tone 14 151.4	166.7250	Tone 14 151.4	N	L	A	DIV X
5	TACTICAL	TAC 5	CASE MOUNTAIN	166.7750	Tone 14 151.4	166.7750	Tone 14 151.4	N	L	A	CASE MOUNTAIN
6	COMMAND	CMD 6	OPERATIONS	171.8625	Tone 4 136.5	164.8625	Tone 4 136.5	N	H	A	MT SILLIMAN
7	COMMAND	CMD 7	OPERATIONS	172.1375	Tone 4 136.5	165.3625	Tone 4 136.5	N	H	A	SHEEP RIDGE
8	COMMAND	CMD 8	OPERATIONS	170.0000	Tone 4 136.5	166.6750	Tone 4 136.5	N	H	A	BUCK ROCK
9	COMMAND	CMD 9	OPERATIONS	170.4125	Tone 4 136.5	165.9625	Tone 4 136.5	N	H	A	SHADEQUARTER
10	COMMAND	CMD 10	OPERATIONS	171.0875	Tone 4 136.5	165.9875	Tone 4 136.5	N	H	A	PARADISE PEAK
11	COMMAND	CMD 11	OPERATIONS	172.5500	Tone 4 136.5	165.3875	Tone 4 136.5	N	H	A	CASE MOUNTAIN
12	COMMAND	PRK CMD2	PARK BACKUP	171.6750	CSQ	165.6000	Tone 7 167.9	N	H	A	PARK DISP / USE AS BACKUP
13	Air-to-Ground	A/G CMD	OPERATIONS	168.3375	CSQ	168.3375	NONE	N	H	A	A/G OPERATIONS
14/18	Air-to-Ground	A/G TAC	A/G TAC	167.0625	CSQ	167.0625	NONE	N	L	A	A/G TACTICAL
15/19	Air-to-Ground	CALCORD	MEDEVAC	156.0750	Tone 6 156.7	156.0750	Tone 6 156.7	N	H	A	A/G MEDICAL
16/20	EMERGENCY	AIR GUARD	EMERGENCY	168.6250	CSQ	168.6250	Tone 1 110.9	N	L	A	EMERGENCY USE ONLY
Prepared By (Communications Unit Leader)				Incident Location: Three Rivers				Forest / Unit / Jurisdiction: SEQUOIA NATIONAL PARK			
Kody Kerwin, COML (925) 953-3044 Communications: 916-618-3343				County: Tulare State: CA				Latitude: " N Longitude: W			

The convention calls for frequency lists to show four digits after the decimal place (five digits for 700 MHz frequencies). The letter "U", "N", or "W" in the deviation (Dev) column reflects whether the frequency is ultranarrow (6.25 kHz), narrow (12.5 kHz) or wide band (25 kHz). Mode refers to either "A" indicating Analog, "D" indicating Digital (e.g. Project 25) or "M" indicating Mixed Mode. All channels are shown as if programmed in a control station, mobile or portable radio. Repeaters (and depending on use, base stations) must be programmed with the Rx and Tx reversed. Communications Unit Phone:



# NORTH ZONE

**INCIDENT RADIO** Incident Name: **KNP Complex North Zone Branch 1** Date/Time Prepared: **10/09/2021 1900** Operational Period Date/Time: **10/10/2021 0700 - 10/11/2021 0700**

**COMMUNICATIONS PLAN (ICS 205)** Utilization of any frequency other than those listed on this form are prohibited, subject to fines by the FCC and demobilization from the incident.

Zn Ch	Function	Channel Name/Trunked Radio Subchannel Talkgroups	Assignment	RX Freq N or W	RX Tone/NAC	TX Freq N or W	TX Tone/NAC	Dev	Pwr	Modes A, D or M	Remarks
1	TACTICAL	TAC 1	DIV L,S	168.0500	Tone 14 151.4	168.0500	Tone 14 151.4	N	L	A	DIV L, S
2	TACTICAL	TAC 2	DIV P	168.2500	Tone 14 151.4	168.2500	Tone 14 151.4	N	L	A	DIV P
3	TACTICAL	TAC 3	STRUCTURE GRP1, MRB	168.6000	Tone 14 151.4	168.6000	Tone 14 151.4	N	L	A	Structure Group 1 / MRB
4	TACTICAL	TAC 4	NIGHT SHIFT NORTH, STRUCTURE GROUP 2	166.7250	Tone 14 151.4	166.7250	Tone 14 151.4	N	L	A	Night Shift North / Structure Grp 2
5	TACTICAL	TAC 5	DIV U	166.7750	Tone 14 151.4	166.7750	Tone 14 151.4	N	L	A	DIV U
6	COMMAND	CMD 6	OPERATIONS	171.8625	Tone 4 136.5	164.8625	Tone 4 136.5	N	H	A	MT SILLIMAN
7	COMMAND	CMD 7	OPERATIONS	172.1375	Tone 4 136.5	165.3625	Tone 4 136.5	N	H	A	SHEEP RIDGE
8	COMMAND	CMD 8	OPERATIONS	170.0000	Tone 4 136.5	166.6750	Tone 4 136.5	N	H	A	BUCK ROCK
9	COMMAND	CMD 9	OPERATIONS	170.4125	Tone 4 136.5	165.9625	Tone 4 136.5	N	H	A	SHADEQUARTER
10	COMMAND	CMD 10	OPERATIONS	171.0875	Tone 4 136.5	165.9875	Tone 4 136.5	N	H	A	PARADISE PEAK
11	COMMAND	CMD 11	OPERATIONS	172.5500	Tone 4 136.5	165.3875	Tone 4 136.5	N	H	A	CASE MOUNTAIN
12	COMMAND	PRK CMD2	OPERATIONS	171.6750	CSQ	165.6000	Tone 7 167.9	N	H	A	PARK DISP / USE AS BACKUP
13	Air-to-Ground	A/G CMD	OPERATIONS	168.3375	CSQ	168.3375	NONE	N	H	A	A/G OPERATIONS
14/18	Air-to-Ground	A/G TAC	A/G TAC	162.1875	CSQ	162.1875	NONE	N	L	A	A/G TACTICAL
15/19	Air-to-Ground	CALCORD	MEDEVAC	156.0750	Tone 6 156.7	156.0750	Tone 6 156.7	N	H	A	A/G MEDICAL
16/20	EMERGENCY	AIR GUARD	EMERGENCY	168.6250	CSQ	168.6250	Tone 1 110.9	N	L	A	EMERGENCY USE ONLY

Prepared By (Communications Unit Leader): Kevin Harper Incident Location: Three Rivers Forest / Unit / Jurisdiction: **SEQUOIA NATIONAL PARK**  
 County: Tulare State: CA Latitude: " N Longitude: W

**Kevin Harper, COM1 (510) 507-1142 Communications: 916-618-3343**

The convention calls for frequency lists to show four digits after the decimal place (five digits for 700 MHz frequencies). The letter "U", "N", or "W" in the deviation (Dev) column reflects whether the frequency is ultranarrow (6.25 kHz), narrow (12.5 kHz) or wide band (25 kHz). Mode refers to either "A" indicating Analog, "D" indicating Digital (e.g. Project 25) or "M" indicating Mixed Mode. All channels are shown as if programmed in a control station, mobile or portable radio. Repeaters (and depending on use, base stations) must be programmed with the Rx and Tx reversed. Communications Unit Phone:



KNP COMPLEX		CA TEAM 2 CONTACT INFO			
NAME	POSITION	UNIT	DISPATCH	Primary Contact (cell)	EMAIL
<b>COMMAND</b>					
Minton, Mike	ICT1	CA-WRP	ONCC	707-498-4435	<a href="mailto:michael_minton@nps.gov">michael_minton@nps.gov</a>
Johnny, Nickie	ICT1	CA-ENF	CICC	530-409-9210	<a href="mailto:nickie.johnny@usda.gov">nickie.johnny@usda.gov</a>
Goss, John	ICT2(t)	CA-SNF	SICC	559-908-6526	<a href="mailto:john.goss@usda.gov">john.goss@usda.gov</a>
Bertsch, Ron	SOF1	GA-CHE		706-515-5625	<a href="mailto:ron@rbriskmanagement.com">ron@rbriskmanagement.com</a>
Tim Sampson	SOF1			509-690-2063	
Theune, Mike	PIO1	CA-KNP	SQCC	559-586-0882	<a href="mailto:Mike_Theune@nps.gov">Mike_Theune@nps.gov</a>
Wyatt, Daron	PIO1(t)	CA-MNP	SBCC	714-497-5633	<a href="mailto:daron@wyattconsulting.us">daron@wyattconsulting.us</a>
Ekman, Robbin	LOFR	CA-LVN	XLBC	559-903-7186	<a href="mailto:Rekman12@gmail.com">Rekman12@gmail.com</a>
<b>OPERATIONS</b>					
Russell, Patrick, Day Ops	OSC1	CA-ANA	XORC	714-493-6371	<a href="mailto:prussell2@anaheim.net">prussell2@anaheim.net</a>
Eichamer, Josh Day Ops	OSC1	CA-SRF			
Laeng, Robert Planning Ops	OSC1	CA-STF	STCC	209-352-0432	<a href="mailto:rlaeng@frontiernet.net">rlaeng@frontiernet.net</a>
Akerberg, Jake, Planning Ops	OSC1(t)	CA-WNP	RICC	530-638-5605	<a href="mailto:jake_akerberg@nps.gov">jake_akerberg@nps.gov</a>
Conklin, Matt, Night Ops	OSC1	CA-ANF	ANCC	626-698-8052	<a href="mailto:matthew.conklin@usda.gov">matthew.conklin@usda.gov</a>
Hildebrand, Mike	DIVS	CA-HAY	XALC	510-460-5568	<a href="mailto:mike.hildebrand@hayward-ca.gov">mike.hildebrand@hayward-ca.gov</a>
Botts, Jacob	DIVS	CA-PNF	PNFC	530-736-3335	<a href="mailto:ibotts80@gmail.com">ibotts80@gmail.com</a>
Harris, Terry	AOBD	TX-TXF	TX-TIC	936-366-4239	<a href="mailto:terrygharris7@gmail.com">terrygharris7@gmail.com</a>
McElfish, Kelvin	ASGS	CA-BDF	SBCC	909-907-2677	<a href="mailto:Bbldkem@hotmail.com">Bbldkem@hotmail.com</a>
<b>PLANS</b>					
Herzog, Walter	PSC1	CA-NOD	SIFC	530-310-3209	<a href="mailto:whertzog@blm.gov">whertzog@blm.gov</a>
Ferguson, Jeff	DMOB/RESL	CA-ENF	CICC	916-837-7723	<a href="mailto:jtf.7170@gmail.com">jtf.7170@gmail.com</a>
Shaffer, Jay	RESL	CA-LOB	XLFC	714-801-7868	<a href="mailto:jay.shaffer@longbeach.gov">jay.shaffer@longbeach.gov</a>
Mustatia, Rita	RESL	CA-TMU		530-208-8003	
Williamson, Terry	SITL	CA-SHF	RICC	707-499-6580	<a href="mailto:terry.williamson@usda.gov">terry.williamson@usda.gov</a>
Mosley, John	SITL(t)	CA-BIA	ONCC	530-249-3889	<a href="mailto:john.mosley@bia.gov">john.mosley@bia.gov</a>
Bass, Carvel	GISS	CA-PNF	PNFC	415-412-6303	<a href="mailto:carvel24@gmail.com">carvel24@gmail.com</a>
Burns, Dennis	FBAN	CA-STF	STCC	209-770-3783	<a href="mailto:dburns@lpfire.org">dburns@lpfire.org</a>
Panno, Dominic	TNSP	CA-TNF	GVCC	530-913-8251	<a href="mailto:dpanno@comcast.net">dpanno@comcast.net</a>
<b>LOGISTICS</b>					
Crakes, Tom	LSC1	CA-LPF	LPCC	775-374-4910	<a href="mailto:tcspul@hotmail.com">tcspul@hotmail.com</a>
Klym, Dave	LSC1	OR-DEF		703-232-5872	<a href="mailto:dklym13@gmail.com">dklym13@gmail.com</a>
Hodge, Jason	FACL	CA-VNC	VNCC	805-444-5223	<a href="mailto:jason.hodge@ventura.org">jason.hodge@ventura.org</a>
Warren, Troy	RCDM	CA-WDL	XYOC	530-848-5430	<a href="mailto:troy.warren@cityofwoodland.org">troy.warren@cityofwoodland.org</a>
Browning, Randy	SPUL	CA-SCR	XSAC	530-400-3607	<a href="mailto:rbrowning@sacfire.org">rbrowning@sacfire.org</a>
Lewis, Casey	ORDM			559-737-0032	
Fitzgerald, Michael	GSUL	CA-SMF	XLAC	310-866-2016	<a href="mailto:mike.fitzgerald@smgov.net">mike.fitzgerald@smgov.net</a>
Harper, Kevin	COML	CA-MRP	XCAC	661-330-0209	<a href="mailto:kharp911@gmail.com">kharp911@gmail.com</a>
Fong, Gerald	ITSS	CA-CSO	ONCC	916-216-5236	<a href="mailto:gfong@blm.gov">gfong@blm.gov</a>
Mohlenbrok, Scott	MEDL	CA-GLN	XLCC	562-225-7041	<a href="mailto:Scottmo24@gmail.com">Scottmo24@gmail.com</a>
Ethridge, Robert	MEDL			909-701-9409	
<b>FINANCE</b>					
Lee, Larry	FSC1	CA-R05	SBCC	951 205 3879	<a href="mailto:lawrence.lee@usda.gov">lawrence.lee@usda.gov</a>
Taylor, Robert	FSC2(t)	CA-BDF	SBCC	909-693-2875	<a href="mailto:robert.taylor2@usda.gov">robert.taylor2@usda.gov</a>
Falls, Tracy	EQTR	CA-MNP	SBCC	805-280-8866	<a href="mailto:tracy_falls@nps.gov">tracy_falls@nps.gov</a>
Hope, Terry	EQTR	CA-MNP	SBCC	805-280-8866	<a href="mailto:terrell_hope@firenet.gov">terrell_hope@firenet.gov</a>
Shapiro, Abby	PTRC	CA-RNP	MNFC	669-696-5497	<a href="mailto:2021_knp_finance@firenet.gov">2021_knp_finance@firenet.gov</a>
Avilla, Cassandra	PTRC	CA-LPF	LPCC	669-696-5497	<a href="mailto:cassandra.avilla@usda.gov">cassandra.avilla@usda.gov</a>



<b>MEDICAL PLAN (206)</b>	<b>INCIDENT NAME:</b> <b>KNP Complex</b>	<b>DATE PREPARED:</b> <b>October 9, 2021</b>	<b>TIME PREPARED:</b> <b>1700</b>	<b>OPERATIONAL PERIOD:</b> <b>10/10/21 – 10/11/21</b> <b>0700-0700</b>
---------------------------	---	---	--------------------------------------	--

INCIDENT MEDICAL AID STATIONS			
MEDICAL AID STATIONS	LOCATION	ALS	
		YES	NO
Medical Support Trailer	Hume Lake		X
Medical Support Trailer	Wood Lake Camp	X	

TRANSPORTATION				
GROUND AMBULANCE				
NAME	LOCATION	PHONE	ALS	
			Yes	No
Ambulance 771 (E-99) Day Shift	Branch II Div. A	KNP Communications	X	
Ambulance 772 (E-100) Day Shift	Branch I Div. S, P, L & Structure Group 1	KNP Communications	X	
Ambulance 773 (E-101) Day Shift	Branch II Div. C	KNP Communications	X	
Ambulance 774 (E-102) Day Shift	Branch I Div. S, P, L, U & Structure Group S	KNP Communications	X	
Ambulance 9775 (E-314) Night Shift	South Zone	KNP Communications		X
Ambulance 776 (E-103) Day Shift	North Zone	KNP Communications	X	

AIR AMBULANCE				
NAME	PHONE #	LOCATION / TYPE	ALS	
			Yes	No
NPS 552 / Tail # 836PA	KNP Communications 916-618-3343	Short Haul Assigned to KNP Complex / Located @ 3 Rivers Helibase	X	
SkyLife EMS Ship	(800) 305-5433	Type 3 / Bell 407 / Air Ambulance IFR Capable (night)	X	
Kern County 407 / Tail # N407KC	KNP Communications 916-618-3343	Type 1 / Day and Night Hoist Assigned to another incident but can be shared / Located in Visalia	X	

HOSPITALS										
NAME	ADDRESS	TRAVEL TIME		PHONE	TRAUMA		HELIPAD		BURN CENTER	
		AIR	GRND		YES	NO	YES	NO	YES	NO
Kaweah Health Urgent Care	1633 S. Court St., Visalia, CA 93277	N/A	30 Min.	559-624-6090		X		X		X
Kaweah Delta	400 W. Mineral King, Visalia, CA 93291 Lat/Long 36°19.71 N, -119°17.70 W	15 Min	30 Min	559-624-2000	LVL 3		X			X
Fresno Community Regional Medical Center	2823 Fresno St., Fresno, CA 93721 Lat/Long 36°44.57 N, -119°47.09 W	30 Min	1 Hr.	559-459-6000	LVL 1		X		X	

**MEDICAL EMERGENCY PROCEDURES**

**LINE "MEDICAL-EMERGENCY" PLAN:**

- Crew Supervisor to contact Division Supervisor/Operations with:
  - Patient Complaint, Condition and Location via Tactical or Command frequency. **Priority 1-Red & 2-Yellow Patients** trigger Incident within Incident (IWI).
- Division Supervisor/Operation contacts Communications/Dispatch:
  - Division Supervisor or POC\* will run "Medical -Emergency" on the Command frequency.
  - Division Supervisor or POC\* to use "Medical Incident Report" worksheet on back of this page or back of IRPG.
  - Communication contacts Medical Unit Leader on the Command frequency or cell phone (562) 252-2168 (Medical Emergencies Only).

POC\* (Point of Contact) and/or Operations

**LINE "NON-EMERGENCY INCIDENT" PLAN:**

- Crew Supervisor to contact Division Supervisor with:
  - Patient Complaint, Condition and Location via Tactical or Command frequency. **Priority 3-Green, (Minor) Patients do not** trigger Incident within Incident (IWI).
- Division Supervisor to contact Communications/dispatch:
  - Division Supervisor or POC\* will run "Non-Emergency Incident" on the Command frequency.
  - Division Supervisor or POC\* will use "Medical Incident Report" worksheet on the back of this page or back of IRPG.
  - Communications contacts Medical Unit Leader on the Command frequency or cell phone (562) 252-2168 (For medical related incidents only).

**IN-CAMP – 24 HOUR MEDICAL**

- Contact 911 and Medical Unit (562) 252-2168 with:
  - Patient Complaint, Condition and Location

9. PREPARED BY Scott Mohlenbrok (MEDL)	10. REVIEWED BY Safety Officer
---	-----------------------------------



**Medical Incident Report**

FOR A **NON-EMERGENCY INCIDENT**: WORK THROUGH CHAIN OF COMMAND TO REPORT AND TRANSPORT INJURED PERSONNEL AS NECESSARY.

FOR A **MEDICAL EMERGENCY**: IDENTIFY ON SCENE INCIDENT COMMANDER BY NAME AND POSITION AND ANNOUNCE **"MEDICAL EMERGENCY"** TO INITIATE RESPONSE FROM COMMUNICATIONS

**Use the following items to communicate situation to communications/dispatch.**

**1. CONTACT COMMUNICATIONS / DISPATCH** (Verify correct frequency prior to starting report)  
 Ex: "Communications, Div. Alpha. Stand-by for Emergency Traffic."

**2. INCIDENT STATUS:** Provide incident summary (including number of patients) and command structure.  
 Ex: "Communications, I have a Red priority patient, unconscious, struck by a falling tree.  
 Requesting air ambulance to Forest Road 1 at (Lat./Long.)  
 "This will be the Trout Meadow Medical Incident, IC is TFLD Jones. EMT Smith is providing medical care."

Severity of Emergency AND Transport Priority (priority 1, 2, 3)	<input type="checkbox"/> <b>RED / PRIORITY 1</b> Life or limb threatening injury or illness. Evacuation need is <b>IMMEDIATE</b> Ex: Unconscious, difficulty breathing, bleeding severely, 2 <sup>o</sup> – 3 <sup>o</sup> burns more than 4 palm sizes, heat stroke, disoriented.  <input type="checkbox"/> <b>YELLOW / PRIORITY 2</b> Serious Injury or illness. Evacuation may be <b>DELAYED</b> if necessary. Ex: Significant trauma, unable to walk, 2 <sup>o</sup> – 3 <sup>o</sup> burns not more than 1-3 palm sizes.  <input type="checkbox"/> <b>GREEN / PRIORITY 3</b> Minor Injury or illness. <b>Non-Emergency transport</b> Ex: Sprains, strains, minor heat-related illness.
Nature of Injury or Illness & Mechanism of Injury	Brief Summary of Injury or Illness (Ex: Unconscious, Struck by Falling Tree)
Transport Request	Air Ambulance / Short Haul/Hoist Ground Ambulance / Other
Patient Location	Descriptive Location & Lat. / Long. (WGS84)
Incident Name	Geographic Name + "Medical" (Ex: Trout Meadow Medical)
On-Scene Incident Commander	Name of on-scene IC of Incident within an Incident (Ex: TFLD Jones)
Crew Patient Care	Name of Care Provider (Ex: EMT Smith)

**3. INITIAL PATIENT ASSESSMENT:** Complete this section for each patient as applicable (start with the most severe patient)

Agency Affiliation: (NO PATIENT NAMES)                      Federal                      Contractor                      Local Government

Patient Assessment:                      Age:                      Weight:                      Chief Complaint:

(If pertinent to Injury)                      Skin Signs: (color/moisture/temp)                      Level of Consciousness:                      BP:                      HR:                      Respirations:

Treatment:

**4. TRANSPORT PLAN:**

Evacuation Location (drop point, intersection, helispot, Lat. / Long, hazards)                      Patient's ETA to Location:

**5. ADDITIONAL RESOURCES / EQUIPMENT NEEDS:**

Paramedic / EMT - Crews - Immobilization Devices - AED - Oxygen - Trauma Bag - IV/Fluid(s) - Splints - Rope rescue - Wheeled litter - HAZMAT - Extrication

**6. COMMUNICATIONS: Identify State Air/Ground EMS Frequencies and Hospital Contacts as applicable**

Function	Channel Name/Number	Receive (RX)	Tone/NAC *	Transmit (TX)	Tone/NAC *
COMMAND					
AIR-TO-GRND					
TACTICAL					

**7. CONTINGENCY: Considerations:** If primary options fail, what actions can be implemented in conjunction with primary evacuation method?  
 Be thinking ahead.

**8. ADDITIONAL INFORMATION:** Updates/Changes, etc.

**REMEMBER:** Confirm ETA's of resources ordered. Act according to your level of training  
 Be Alert - Keep Calm - Think Clearly - Act Decisively

\*\*\* Follow up with MEDL upon return to ICP \*\*\*

## WILDLAND FIRE COVID-19 SCREENING TOOL

Today or in the past 24 hours, have you had any of the following symptoms<sup>4</sup>?

Symptom
Cough more than expected?
Shortness of breath or difficulty breathing?
Fever?
Chills?
Muscle pain outside your normal for firefighting?
Sore throat?
New loss of taste or smell?

*\* Take temperature with no-touch thermometer, if available \**

### Instructions for Screening

Item	What to Do
If resource has a cough that is more than expected, shortness of breath or difficulty breathing, or any other symptoms listed.	DO NOT MOBILIZE
At Entries: Consider adequate number of personnel needed for screening. Although medical personnel are ideal, screeners do not have to be medically trained.	DO NOT ANNOUNCE Ask individual to step aside and follow the steps below.
If resource has cough, shortness of breath or difficulty breathing, or any other listed symptoms including fever (over 100.4) at entry.	

### Steps to follow

Escort symptomatic individual to isolation area.
Isolation support personnel should begin documentation.
Have symptomatic individual contact Supervisor for further direction.
Notify public health officials.
Have individual transported as appropriate.
Protect and secure any collected Personal Identifiable Information (PII) or Personal Health Information (PHI).

**IF YOU EXPERIENCE COVID-19 SYMPTOMS, CONTACT IMMEDIATELY:  
858-204-6238**

<sup>4</sup> Symptoms of Coronavirus

<https://www.cdc.gov/coronavirus/2019-ncov/symptoms-testing/symptoms.html>





# Human Resource Message

## KNP Complex

*Greetings*, my name is Ryan and I am the Human Resource Specialist (HRSP) assigned to the incident. As the HRSP, I am available to *all* incident personnel to provide assistance with a wide range of issues that may be impacting the work environment, such as conflict resolution and addressing any allegations of misconduct.

As a reminder, whether you are a federal, state, county or local government employee, contractor or AD, while assigned to the incident, we all must adhere to federal rules and laws regarding appropriate behavior. We have zero tolerance on this incident for illegal drugs (including marijuana), alcohol, and **sexual harassment**. Just don't do it.

Remember: Kilo, India, Sierra, Foxtrot, Whiskey...*Keep it safe for work!*

If I can be of any assistance to you, please text or call the below number or stop by my office, which is located in the community center.



**Hours are 0530 to 2200**  
**Ryan Voelki- (HRSP) – (530) 457-7276**

# KNP Complex

## Resource Advisor Message

- ❖ Employ Minimum Impact Suppression Tactics (MIST) when conducting operations within park boundaries.
- ❖ Limit snagging unless necessary for firefighter safety and the protection of critical values at risk; always low stump.
- ❖ Limit operations in meadows.
- ❖ Avoid cutting trees over 20" unless required for safety.

### Consult with Fireline Resource Advisors (REAFs) before:

- ❖ Working in an area flagged off with sensitive resource flagging (Blue/black stripe + white; yellow/black stripe + white).
- ❖ Establishing new camps, staging areas, safety zones, helispots, etc.
- ❖ Park-approved dozer line construction should have a REAF on site during construction.

Please ensure all food and scented items are secured at all times in approved bear-resistant containers and please pack out all garbage.

Wash newly arrived vehicles and equipment at woodlake weed wash before heading to fireline.

Always maintain 300' clearance of dozers around Sequoia groves.

## Giant Sequoia Prep Standards

**Goal:** reduce fire impacts on lower tree, prevent fire from climbing into crown, and remove litter from catfaces.

1. Create a 3-foot scrape around the base of the tree down to mineral soil.
2. Create an approximately 25-foot (drip line of crown) saw line around a tree where brush, most small trees (<10 in. dbh), heavy coarse woody debris (1000 hr fuels), and snags are removed.
3. Remove litter/duff and woody debris from catfaces. Decides whether wrapping the catface would help keep it from igniting. If wrap is available and tree is a tree of special interest, consider wrapping if tree may be impacted by radiant heat from nearby fuels.
4. Thin thickets of trees surrounding large sequoias for about 25 feet.



# RESOURCES MESSAGE

PLEASE USE THE FOLLOWING EMAIL  
ADDRESS WHEN CONTACTING  
RESOURCES (IAP PARTS, ECT.)

[2021.knp.resources@firenet.gov](mailto:2021.knp.resources@firenet.gov)

THANKS!!



# KNP COMPLEX CHECK-IN PROCESS

**Virtual Check-In:** Please complete online check-in with your smart phone or laptop.

1. SCAN THE QR CODE and COMPLETE the form in its entirety.
2. Use your Resource Order and Incident Qualification Card to complete the check-in information accurately. For CREWS, only the leader must check in online and then provide manifest by email.
3. Please ensure the name, cell phone number and e-mail address are accurate and will reach you on this assignment.
4. Email Resource Order, Manifest, and AD Hire Forms to: [2021.knp.checkin@firenet.gov](mailto:2021.knp.checkin@firenet.gov)

## Check-in QR Code



# KNP COMPLEX DEMOB PROCESS

Please scan the QR code for the directions to the DEMOB process. On this Incident we use a remote DEMOB process. E-mail or text the DEMOB unit leader with questions.

**If you need to book a flight back to your home unit.** Please contact DEMOB no less than 72 hours in advance of your DEMOB date. Call DEMOB at 818-724-7723.

The DEMOB process for the KNP Complex Fire is as follows:

1. Check DEMOB list for time (due to COVID Protocols do not attempt to DEMOB early)
2. Vehicle Inspection from Ground Support
3. Weed Wash for ALL EQUIPMENT!
4. Return supplies to Supply Unit
5. Return communications equipment to Communications
6. Turn in documentation (ex: unit log)
7. If a trainee, complete documentation using QR Code in the IAP
8. Complete timekeeping with Finance.
9. Complete this form (only after you finish with finance)

## Demob QR Code



[2021.knp.demob@firenet.gov](mailto:2021.knp.demob@firenet.gov)



10/10/2021

TENTATIVE RELEASE

KNP COMPLEX US-CA-KNP-000122

CREWS

C-25                    0630            (CC) CC SAN DIEGO 22

OVERHEAD

O-417                    0630            (HEQB) HORNE, CHRISTOPHER ALLEN

O-229                    0630            (EMPF) ABEL, FRANK HOYLE

O-276                    0630            (TFLD) SINGER, JEFFREY T

O-388.17                0700            (DIVS) CHESAREK, TYLER J

O-404                    1100            (ACDP) WOLFF, ERIN MARGARET

## Training Specialist Message

An Incident Training Specialist is assigned to this incident and will be performing the duties "Remotely".

### To assure proper documentation for your assignment:

1. Scan the QR Code
2. Complete the Trainee Registration Form

This is the link to sign up -



### At the end of your assignment:

1. **Trainee:** Complete the exit interview form. Use the exit interview QR code to access the document.

This is the link to the exit interview form -



2. **Trainer:** Fill in the Position Task Book as completely as possible for this incident.
3. **Trainer:** Complete the ICS 225 performance evaluation and discuss with your Trainee. Make sure it's signed by both the Trainer and Trainee. Take a picture/copy of the ICS 225 and send it to [imt2training@gmail.com](mailto:imt2training@gmail.com)

The Training Specialist will send the training documents to the email address you provided. For training related questions, call/text Dominic Panno (TNSP) at 530-913-8251 or email- [imt2training@gmail.com](mailto:imt2training@gmail.com)



# From your Fire Friendly Finance

[2021.knp.finance@firenet.gov](mailto:2021.knp.finance@firenet.gov)

**Finance is available to assist you in-person at  
Orange Cove ICP.**

Prior to your demob date, please contact Finance to expedite the demob process. Upon submittal of your final CTR/Shift tickets, Finance will email you copies for your pay documents for review and signature.

**When emailing us:**

**OVERHEAD/FED:**

In *subject line* of email: "TIME" [Resource #], [Resource Name], and items included.

(EXAMPLE: TIME O-1, Bunyan, Paul, CTR 20211031)

**EQUIPMENT & COOPERATOR:**

In *subject line* of email: "EQTR" [Resource #], [Resource Name], and items included.

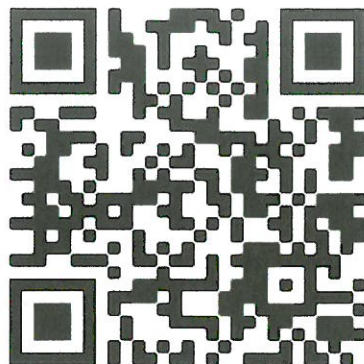
(EXAMPLE: EQTR E-1, Big Red's Trucking ST 20211031)

In *body* of email: Please provide a contact name and phone number.

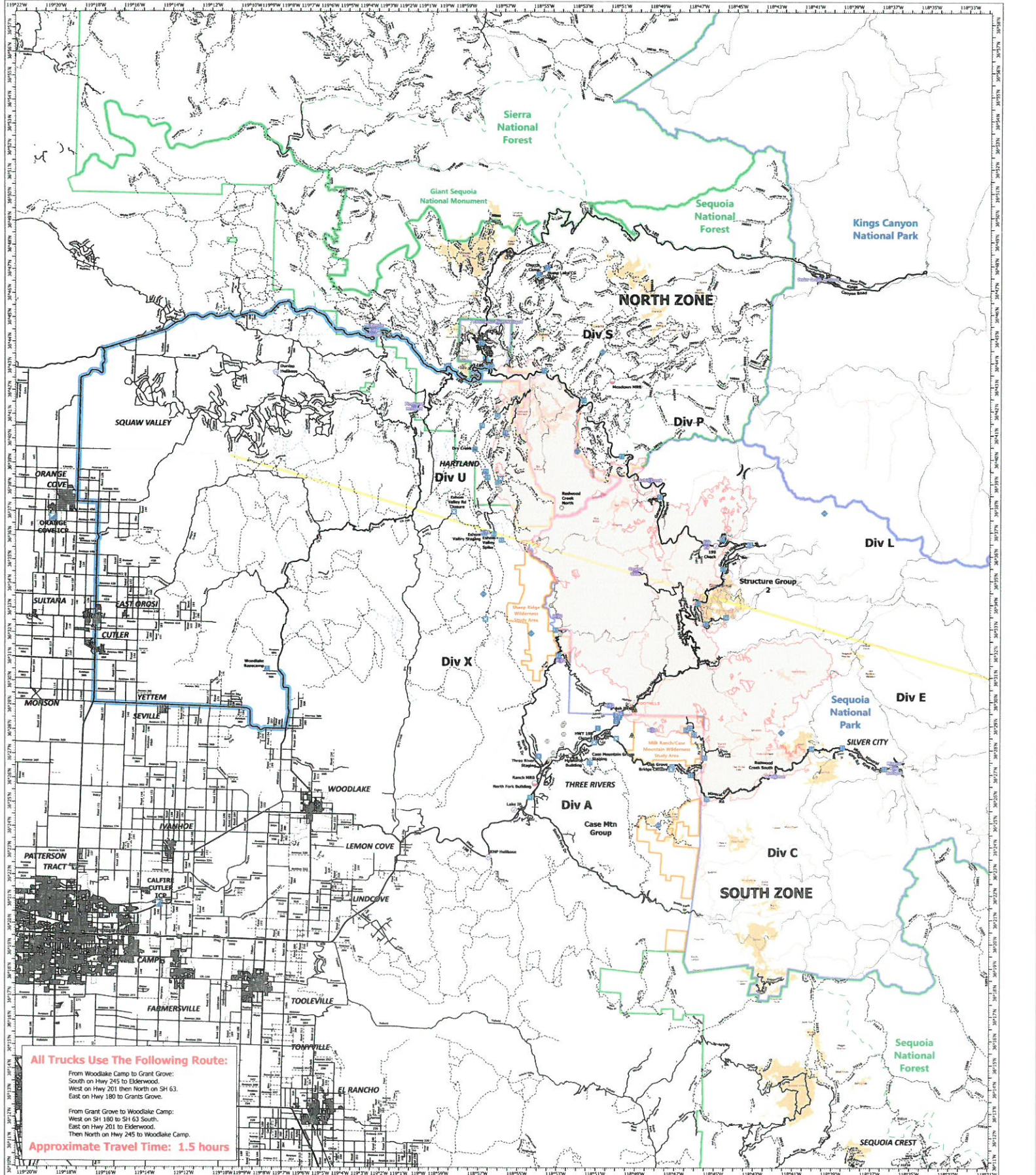
**Personnel Phone: 669-696-5497**

**Equipment Phone: 805-280-8866**

Finance Email:







**All Trucks Use The Following Route:**

From Woodlake Camp to Grant Grove:  
 South on Hwy 245 to Elderwood.  
 West on Hwy 201 then North on SH 63.  
 East on Hwy 180 to Grants Grove.

From Grant Grove to Woodlake Camp:  
 West on SH 180 to SH 63 South.  
 East on Hwy 201 to Elderwood.  
 Then North on Hwy 245 to Woodlake Camp.

**Approximate Travel Time: 1.5 hours**

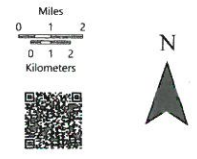
**TRANSPORTATION**

KNP Complex  
 CA-KNP-000122  
 10/9/2021

87,145 acres at 10/9/2021 1642

185,000 CHMT2 GIS 10/9/2021 1751  
 Acres from IR and GIS  
 North American 1983 Datum, LatLong Grid

- Points of Interest
- ⊙ Aerial Hazard
- ⊙ Check Point
- ⊙ Mobile Retardant Base
- ⊙ Helispot
- ⊙ Helibase
- ⊙ Division Break
- ⊙ Incident Command Post
- ⊙ Drop Point
- ⊙ Closure
- ⊙ Camp
- ⊙ Staging Area
- ⊙ Landmark
- ⊙ Gate
- ⊙ Bridge
- ⊙ Safety Zone
- ⊙ Visitor Center
- ⊙ Sequoia Grove
- Truck Route
- Maintained Trails
- Unmaintained Trails
- Wildfire Daily Fire Perimeter
- NPS Unit Boundary
- USFS Boundary
- BLM Wilderness Study Area
- Giant Sequoia National Monument
- Unverified Route
- Major Road
- Minor Road
- Private Road
- Unknown Road
- Major Road
- Minor Road
- Unimproved Road
- Unimproved Route
- Trail
- Trail







# KNP Complex ICP

1705 S Anchor Ave

Orange Cove, CA 93646

Ground Support →  
180 E Railroad Ave  
Orange Cove, CA 93646

Fuel

Engine Parking

Sleeping

SLEEPERS

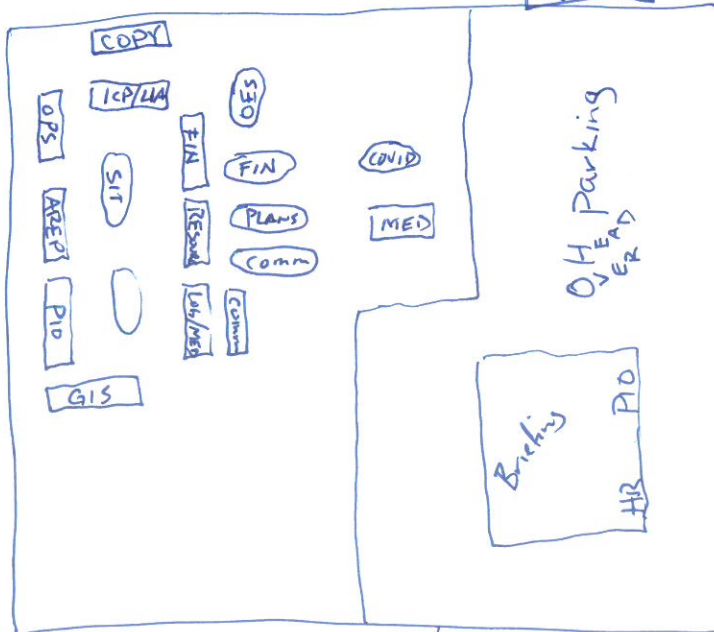
ICE  
WATER  
LUNCH

Showers

Laundry

Kitchen

Vendor  
Sleeping



Parking

Sleeping

PARK

Supply

S Anchor Ave

Parlier Ave

