

# Direct Protection Area

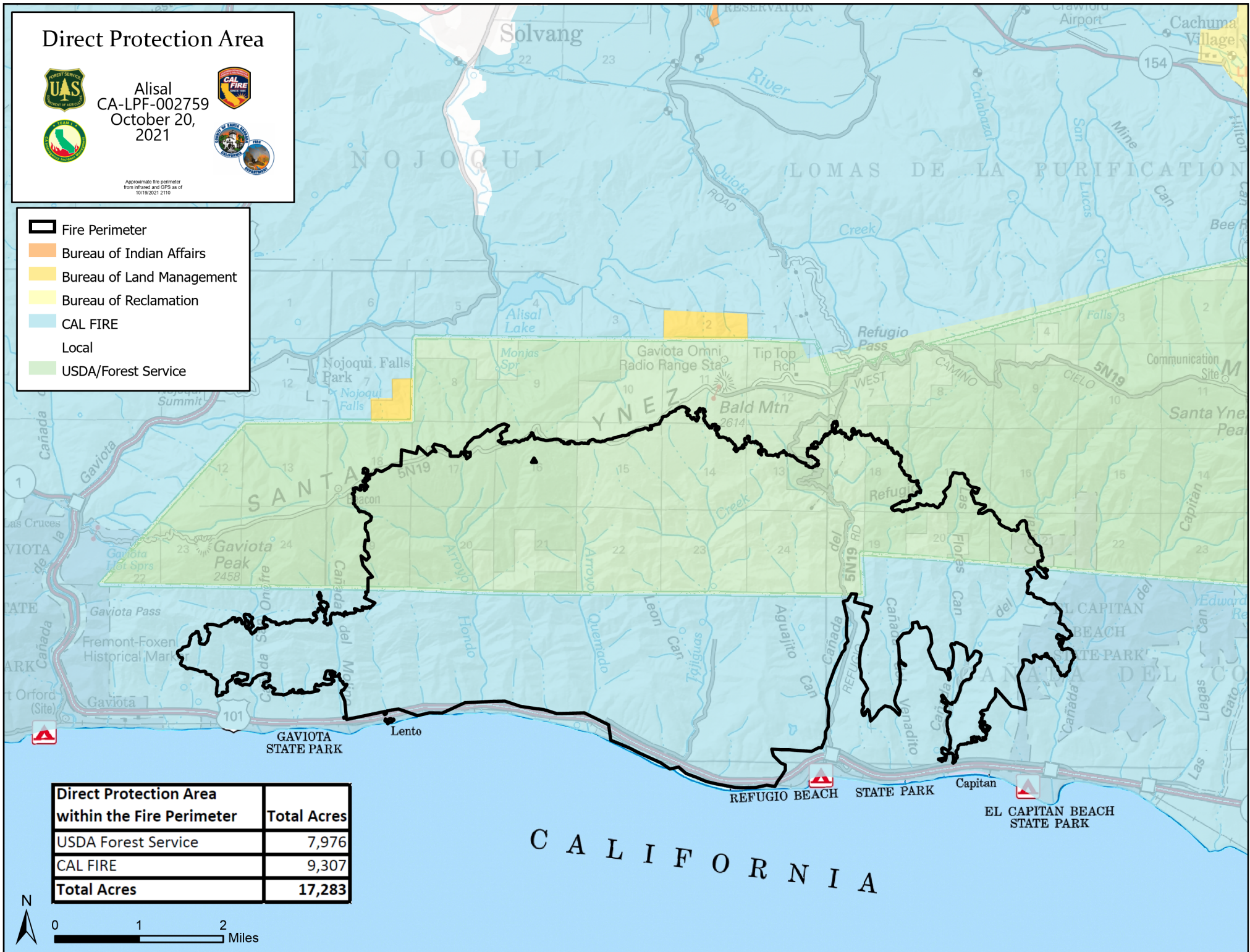


Alisal  
CA-LPF-002759  
October 20,  
2021



Approximate fire perimeter  
from infrared and GPS as of  
10/19/2021 2:10

- Fire Perimeter
- Bureau of Indian Affairs
- Bureau of Land Management
- Bureau of Reclamation
- CAL FIRE
- Local
- USDA/Forest Service



Direct Protection Area within the Fire Perimeter	Total Acres
USDA Forest Service	7,976
CAL FIRE	9,307
<b>Total Acres</b>	<b>17,283</b>

