

CORRECTED



# Windy Fire

**September 29<sup>th</sup> – September 30<sup>th</sup> 2021**  
**0600 Wednesday – 0600 Thursday**

**CA-TIA-003058**



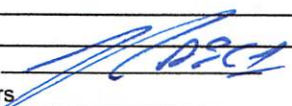
**Operational Briefing, Check-in Form, IAP, Extension/Crew  
Swap Forms, Maps, DEMOB, Evaluations and Finance**







## ORGANIZATION ASSIGNMENT LIST (ICS 203)

<b>1. Incident Name:</b> WINDY FIRE		<b>2. Operational Period: Date From:</b> 9/29/2021 Time From: 0600		<b>Date To:</b> 9/30/2021 Time To: 0600	
<b>3. Incident Commander(s) and Command Staff:</b>			<b>7. Operation Section:</b>		
IC/UC's	Rick Young	Operations	Steve Burns, Caleb Finch(t)		
Deputy	Dustan Mueller	Deputy Operations	Alex McBath, Ernie Villa(t), Pete English(t)		
Safety Officer	Dave Welch, Jason Winbigler	Night Ops	Dave Provencio		
Information Officer	Nathan Judy, Sue Exline	Staging Area			
Liaison Officer	Rick Alpert, Corey Rose(t)	<b>Branch</b>	<b>1</b>	<b>Kim Olson</b>	
<b>4. Agency/Organization Representatives:</b>		Division/Group	A	Richard Sandoval, Adam Treich(t)	
Agency/Organization	Name	Division/Group	C	Mike Huneke, Nate LaRusso(t)	
BIAAA	Nate Gogna	Division/Group			
SQF AA	Eric La Price	Division/Group			
SQF AAREP	Mark Sando, Tim Jones	<b>Branch</b>	<b>3</b>	<b>Billy Steers</b>	
Tule River Tribal Chair	William Garfield	Division/Group	E	Jimmy Hidalgo, Danny Garcia(t)	
Tribal Rep./Tule River FD	Richard Brown	Division/Group	J	B. Johnson, Tim Snyder(t)	
		Division/Group	K	Harold Cook, Kris Baumgartner(t)	
SQF Chief 2	Jack Medina	Division/Group	East Contingency	Jeb Pronto	
Tulare Co. Sheriff AREP	Randy Gunderman	Division/Group			
CCC Rep.	Aaron Bayhon	Division/Group			
Lead READ	Monique Sanchez	<b>Branch</b>	<b>4</b>	<b>Louis Ermigarat, Tyler Attebury(t)</b>	
OES AREP	Randy Unkovich				
SCE	Scott Brown, Kyle Gordon	Division/Group	L	Jacob Ching, Warren Browett(t)	
ARA	Carolyn Kelly	Division/Group	O	Jon Wight	
CALFIRE	Gratian Bidart	Division/Group			
Tulare Co. Fire AREP	Pete Marquez	Division/Group			
<b>5. Planning Section:</b>		<b>Branch</b>	<b>7</b>	<b>Gary Monday, Shane Santos(t)</b>	
Chief	Jason Schillinger, Rick Leuck	Division/Group	P/R	Louie Orozco, Travis Clendenen(t)	
Deputy	Robert Ashby(t), Ryan Wakefield(t)	Division/Group	Y	Eammanuel Torres, Brian Borden(t)	
Resource Unit	Harry Kelmanson, Ryan Resnick, Kelly Smyth(t), Robert Villa(t)	Division/Group			
		Division/Group			
Situation Unit	Tad Morelock, Frank Baker, Josh Massie(t)	<b>Branch</b>	<b>Night</b>	<b>Jesse Knox, Adrian Villegas(t)</b>	
		Division/Group	A	Mark Sachara	
Documentation Unit	Johanna Ostling	Division/Group	C/E	TBD	
Demobilization Unit	Dave Loop, Scott Laurie	Division/Group	J	Justin Yankey, Philip Quigley(t)	
GISS	Dawn Hutchinson, Bob Kirk, Jerry Petruzalek, Don Maxwell, Joel Silverman	Division/Group			
		Division/Group			
		<b>Branch</b>			
FBAN	Jeff Shelton	Division/Group			
IMET	Rich Thompson, Philomon Geertson	Division/Group			
Training Tech Spec	Brad Smith	Division/Group			
ITSS	Jim Youngblood, Rigoberto Martinez, Justin LaMay	Division/Group			
		Division/Group			
Human Resources	Andrea Cabida	<b>Air Operations Branch</b>		<b>Director:</b>	John Keesee, Sarah Cu
<b>6. Logistics Section</b>		Air Support Group Supervisor		Ray Ucha, Cole Wallace(t)	
Chief	Brett Shurr, Jim Eckroth, Ken Kumpe, Rickie Crowthers	Air Tactical Group Supervisor		Skylar Dalton, Alex Ihle	
		Helibase Manager		Cindy Bradley, Lynn Corren(t)	
Supply Unit	Mike Bradford				
Ordering	Kate Morris	<b>8. Finance/Administration Section:</b>			
Facilities Unit	Tim Brown	<b>Chief</b>	Theresa Fork		
Ground Support Unit	Zeb Wilcox	<b>Time Unit</b>	Janice Brown, Maggie Prochazka		
Communications Unit	Ken Earle	<b>Comp/Claims Unit</b>	Elaine Downing		
Medical Unit	Newt Ong, Robert Russell	<b>Cost Unit</b>	Roger Siemers		
Base Camp Manager	Crystal Danheiser, Dion Nugent(t), Dave Roberts(t)	<b>EQTR</b>	Sue Cady		
Food Unit	Gary Simons				
<b>Prepared By: Name:</b>	Jason Schillinger	<b>Position/Title:</b>	PSC	<b>Signature:</b>	
<b>ICS 203</b>		<b>Date/Time:</b>	9/28/2021 2300 hours		





## INCIDENT Weather Forecast



**FORECAST NO:** 17 **NAME OF FIRE:** Windy  
**PREDICTION FOR:** Wed-Thu **UNIT:** CA-TIA  
**SHIFT DATE:** 9/29 – 9/30 (0600-0600) **SIGNED:** Philomon Geertson (T) / Rich Thompson  
**FORECAST ISSUED:** 9/28/21 @ 1500 **Incident Meteorologist**

---

**WEATHER DISCUSSION:** Warmer and drier conditions will be found across the fire today. Relative humidity will be much lower than yesterday with poor recoveries following for tonight. Across the ridges, light winds will start the day northeasterly but gradually veer southwesterly by afternoon. At lower elevations, look for a typical diurnal wind regime with enhanced southerly wind gusts during the afternoon through the Kern River Valley. For Thursday into the weekend, a warming and drying trend can be expected.

---

### **WEATHER FORECAST FOR TODAY:**

**WEATHER:** Mostly sunny. Areas of smoke.

**MAX TEMPERATURES:** 70-78 lower slopes and valleys below 3,000 feet west side and below 5,000 feet east side; 60-70 higher ridges and slopes.

**MIN HUMIDITY:** 21-32% western side; 12-21% eastern side.

**20 FT WINDS:**

**RIDGETOP -** Northeast 4-8 MPH in the morning gradually shifting southeast to southwest through the day with gusts up to 16 MPH in the afternoon.

**SLOPE/VALLEY -** Downslope/downvalley winds 2-6 MPH with gusts to 8 MPH through mid-morning then becoming upslope/upvalley 4-8 MPH with gusts up to 12 MPH during the afternoon; except becoming southerly 5-10 MPH with gusts up to 18 MPH near the Kern River.

**STABILITY/INVERSION:** Inversion dissipating around 1100-1200.

---

### **OUTLOOK FOR TONIGHT:**

**WEATHER:** Clear. Areas of smoke.

**MIN TEMPERATURES:** 45-55, locally colder in sheltered basins/valleys.

**MAX HUMIDITY:** 20-30% ridges, slopes, and exposed eastern valleys early in the evening then gradual drying overnight; 30-45% remaining valleys and lower western slopes.

**20 FT WINDS:**

**RIDGETOP -** Southwest wind 4-8 mph early reversing to northeast 5-9 MPH with gusts of 12-16 MPH overnight.

**SLOPE/VALLEY -** Upvalley/upslope 3-6 MPH with gusts 12 MPH, early becoming downslope/downvalley at 2-5 MPH with gusts up to 10 MPH overnight.

**STABILITY/INVERSION:** Inversion developing in valleys after 1900.

---

**OUTLOOK FOR THURSDAY THROUGH SATURDAY:** A warming and drying trend is expected through the period as high pressure builds over the area. From Thursday through Saturday, there will be some weak offshore winds. Otherwise, typical diurnal, terrain-driven, winds can be anticipated.

# FIRE BEHAVIOR FORECAST

FORECAST NUMBER: 17	TYPE OF FIRE: Wildfire
FIRE NAME: Windy Fire	OPERATIONAL PERIOD: 09/29/21 0600-0600
DATE ISSUED: September 28, 2021	TIME ISSUED: 20:00
UNIT: CA-TIA-003058	SIGNED: <i>Jeff Shelton</i> Typed/printed: Jeff Shelton (LTAN)

## INPUTS

### WEATHER SUMMARY:

**\*\*\* Warmer and Drier \*\*\***

Warmer and drier conditions today with poor recoveries tonight. Light northeasterly winds veer southwesterly by afternoon. At lower elevations, typical diurnal winds and southerly wind gusts through the Kern River Valley. Into the weekend, a warming and drying trend can be expected.

#### Day

Max. Temperatures- 60°-78° Min. Humidity-12 to 21% Winds- NE pivot SW up to 8 mph, Gusts to 16 mph

#### Night

Min. Temperatures- 45°-55° Max. Humidity-30 to 45% Winds- SW then NE to 9 mph, Gusts up to 16 mph

## OUTPUTS

### FIRE BEHAVIOR

#### GENERAL:

- Fire and wind have weakened trees considerably... **Carefully Evaluate All Paths of Travel!**
- Light precipitation has little to no effect on large fuels... **Expect Complete Consumption!**
- Fire is transitioning into old burn scars with weak trees... **Count on Snags Coming Down!**
- Firing opportunities have changed... **Plan for a late Burn Window... And More Fuel!**
- Recent RH recovery is affecting lighter fuel availability... **Burn Periods are Slowly Changing!**
- Don't Guess. Know the "sweet spot" in your burn windows... **Monitor your Weather Trends!!**
- Higher humidity will make... **Fuel Arrangement is Critical to Receptivity!**

#### SPECIFIC:

- **All Divisions: Fine Fuels Unavailable Early.... Large Fuels, Dead and Live, Remain DRY...**

**Flame Lengths-** 1-6 ft. in Grass, Up to 20 ft. in Brush/Understory... **Higher Near Kern River!**

**Rate of Spread-** Up to 20 chains/hr. in Grass, Up to 40 chains/hr. in Brush... **Varied East to West!**

**Spotting Distances-** Up to a 1/4 mile from Grass/Brush, Up to 1 miles in Timber (From Torching)

**Probability of Ignition-** (Day) Unshaded Up to 90% - Shaded Up to 60% (Night) Down to <30%

#### AIR OPERATIONS:

**Sunrise: 06:50**

**Sunset: 18:46**

Expect fair smoke dispersion once the lower elevation inversion breaks around noon. Mixing heights start out at less than 200 feet; rise to 4,000 AGL; then return to less than 200 feet after sunset. Anticipate terrain induced turbulence in the Tule and Kern River corridors throughout the shift.

## SAFETY

**Fire Weakened Trees Lose Their Strength....**

**Day by Day..... Hour by Hour.....**

**Understand Hazard Trees- Read IRPG Pages 22 and 23!**

# Windy Fire – Safety Message

INCIDENT# CA-TIA-003058

DATE: 9/29-9/30/2021 TIME: 0600-0600 Day/Night

## TRIGGER POINTS

Trigger points are not decision-makers but serve as predetermined cues to prompt you to re-evaluate the current and potential situation and its associated risks. They help you to determine and implement the proper course of action.

- Use trigger points for preplanning. **DO NOT WAIT UNTIL YOU ARE IN THE WRONG PLACE AT THE WRONG TIME-WITH NO TIME.**

Trigger points should be based on measurable factors such as:

Relative Humidity, Winds, Fire Behavior, Topographical Boundaries, Time Constraints/Time of Day, Distance to Safety Zones, Loss of Resources, and other Operational Considerations (e.g. firefighter fatigue, loss of lookouts or communications, weather change).

- As you approach predetermined trigger points, go through the Risk Management Process to help identify if a change in tactics is required:

Identify Hazards, Assess Hazards, Develop Controls and Make Risk Decisions, Implement Controls, and Supervise and Evaluate.

## SPOT FIRES

Consider the following questions if you're getting spot fires across your line.

- What is your (PIG)? Can you handle increased spotting?
- Do you have a plan for long range spotting in your fuel type?
- Are resources available and the correct type?
- Do you have more than one safety zone in case access is cut off?
- Do your primary lookouts have a good view of the current situation?
- To reduce the risk, are you ready to retreat?

## HAZARD TREES

Consider the **SEVERITY, PROBABILITY,** and **EXPOSURE OF THE HAZARD TREE** problems continually as you perform fire-line operations. Remember to look for hazard trees in staging areas and parking areas.

### Environmental Element:

Winds, Night Ops, Bug Kill Trees, Number, Density, Height of Hazard Tree, Amount of time the area has been burning.

### Hazard Tree Indicators:

Burning Trees, High-Risk Tree Species, Dead, Broken, Burning Tops/Limbs Overhead, Absence of Needles, Bark, Limbs, Leaning or Hung -UP.

## DRIVING SAFETY

To be a safe driver you must **WANT** to be one. Take a good, hard look at your driving habits. Are you training yourself to do the right things the right way, like fastening your seat belt, checking your mirrors, and maintain safe speeds and following distances?

CIIMT 5 Safety Group





# ASSIGNMENT LIST (ICS 204 WF)

CONTROLLED UNCLASSIFIED  
INFORMATION//BASIC

<b>1. Incident Name:</b> <p style="text-align: center; font-weight: bold;">WINDY FIRE</p>	<b>2. Operational Period:</b> Date From: 09/29/21      Date To: 09/30/21 Time From: 0600              Time To: 0600	<b>3. Branch</b> <b>Division</b> <p style="text-align: center; font-size: 2em; font-weight: bold;">1                      A</p>
--	---	--

<b>4. Operations Personnel:</b>		Page 1 of 2                      Alpha
Operations Section Chief: <b>Steve Burns, Caleb Finch(t)</b>	Night Ops: <b>Dave Provencio</b>	
Branch Director: <b>Kim Olson</b>	Branch Safety:	
Division/Group Supervisor: <b>Richard Sandoval, Adam Treich(t)</b>	Air Attack: <b>Skylar Dalton, Alex Ihle</b>	

5. Resources Assigned:	** Resources Below in Bold are 12 Hour **							
Resource Identifier	ALS	LWD	Leader	Personnel	Request #	Hours	Reporting Location	
HC2IA GROVELAND 4		9/30	<b>TIMOTHY MARKIN</b>	20	<b>C-34</b>	0600-1800	JOHNSONDALE	
HC2IA <del>PVT</del> WHEELER PEAK 43		9/30	<b>JUSTIN MAESTAS</b>	21	<b>C-43</b>	0600-1800	JOHNSONDALE	
HC2IA <del>PVT</del> PACIFIC COAST 45		9/30	<b>ZAC CURTIS</b>	20	<b>C-45</b>	0600-1800	JOHNSONDALE	
HC2IA COLOR COUNTRY 5		10/11	<b>KURTIS LITTLEFIELD</b>	18	<b>C-92</b>	0600-1800	JOHNSONDALE	
HC2 PVT NORTH PACIFIC 83		10/10	<b>JUAN PADILLA</b>	20	<b>C-83</b>	0600-1800	JOHNSONDALE	
HC2 PVT PACIFIC OASIS 85		10/10	<b>JAMES SPRIGGS</b>	19	<b>C-85</b>	0600-1800	JOHNSONDALE	
ENG3 SAN MANUEL BE241		10/12	<b>MICHAEL TIDSWELL</b>	3	<b>E-137</b>	0600-1800	JOHNSONDALE	
ENG3 HOLTVILLE BR36		9/29	<b>JOHN ROBLES</b>	3	<b>E-156</b>	0600-1800	JOHNSONDALE	
ENG3 CLE 6-3		10/6	<b>SCOTTIE CAPPS</b>	3	<b>E-228</b>	0600-1800	JOHNSONDALE	
ENG3 LPF E355		10/6	<b>SPENCER LOVELACE</b>	5	<b>E-285</b>	0600-1800	JOHNSONDALE	
ENG3 INF 331		10/9	<b>GABRIEL GAMINO</b>	5	<b>E-296</b>	0600-1800	JOHNSONDALE	
ENG3 PVT CASTLE MOUNTAIN 15		9/29	<b>ROBERT MITTAL</b>	3	<b>E-139</b>	0600-1800	JOHNSONDALE	
ENG4 PVT METHOW 18		10/5	<b>JORDI HERNANDEZ</b>	3	<b>E-207</b>	0600-1800	JOHNSONDALE	
ENG4 PVT METHOW 14		10/5	<b>JOHN NEUNEUKER</b>	3	<b>E-208</b>	0600-1800	JOHNSONDALE	
ENG6 ID ENG52		9/30	<b>HUNTER DROEGMILLER</b>	4	<b>E-162</b>	0600-1800	JOHNSONDALE	
DOZ2 PVT HUCKABY 169		9/30	<b>TOM HUCKABY</b>	2	<b>E-169</b>	0600-1800	JOHNSONDALE	
DOZ2 PVT BENNET 314		10/9	<b>KARSEN BENNETT</b>	2	<b>E-314</b>	0600-1800	JOHNSONDALE	
WTT1 MONROVIA 101		10/10	<b>HARVEY HEWITT</b>	2	<b>E-322</b>	0600-1800	JOHNSONDALE	

**6. Work Assignments:**

- Provide for structure defense for the Ponderosa community.
- Contain the fire east of the 21S06 Road in the Castle Fire burn scar.
- Construct direct line west of the 107 Road above Peppermint Station.
- ~~Begin mop-up along the 107 Road and 21S06 Road, 50' depth.~~ - Continue mop-up along control lines, 100' depth

**7. Special Instructions:**

- Use appropriate suppression tactics based on current and expected fire behavior to protect the values at risk.
- Follow all COVID-19 protocols and utilize appropriate PPE and social distancing to enhance personnel safety.
- Be advised that the following insurance company resources will be in the Division and are NON-ASSIGNED and NON-FIRE: E-1, E-544, E-547, E-703, E-5432, E-5416, TENDER 3101, TENDER 3104, GFP MOD-7.

8. Communications							
Name	Ch	Function	Rx Freq	Rx Tone	Tx Freq	Tx Tone	Notes
NIFC C1	1	COMMAND	170.9750N	T5 - 146.2	168.7000N	T5 - 146.2	Jordan - North
NIFC T1	6	TACTICAL	168.0500N	T5 - 146.2	168.0500N	T5 - 146.2	DIV A/K-NIGHT A
A/G TAC	14	A/G TAC	167.9875N		167.9875N		ALL DIVISIONS
CALCORD	15	MEDICAL	156.0750N	T6 - 156.7	156.0750N	T6 - 156.7	Medical
GUARD 25	16	AIRGUARD	168.6250N		168.6250N	T1 - 110.9	EMERGENCY
CALCORD	19	MEDICAL	156.0750N	T6 - 156.7	156.0750N	T6 - 156.7	Medical
GUARD 25	20	AIRGUARD	168.6250N		168.6250N	T1 - 110.9	EMERGENCY

**9. Prepared by: Name:** Harry Kelmanson, Ryan Resnick, Kelly Smyth(t), Robert Villa(t)      RESL      Signature:

ICS 204      Date/Time: 9/28/2021      2200      Personnel Count: 156





# ASSIGNMENT LIST (ICS 204 WF)

CONTROLLED UNCLASSIFIED  
INFORMATION//BASIC

<b>1. Incident Name:</b> <p style="text-align: center; font-weight: bold;">WINDY FIRE</p>	<b>2. Operational Period:</b> Date From: 09/29/21    Date To: 09/30/21 Time From: 0600            Time To: 0600	<b>3. Branch</b> <b>Division</b> <p style="text-align: center; font-size: 2em; font-weight: bold;">1                      C</p>
<b>4. Operations Personnel:</b>		Page 1 of 1                      Charlie

Operations Section Chief: <b>Steve Burns, Caleb Finch(t)</b>	Night Ops: <b>Dave Provencio</b>
Branch Director: <b>Kim Olson</b>	Branch Safety:
Division/Group Supervisor: <b>Mike Huneke, Nate LaRusso(t)</b>	Air Attack: <b>Skylar Dalton, Alex Ihle</b>

5. Resources Assigned:	** Resources Below in Bold are 12 Hour **							
Resource Identifier	ALS	LWD	Leader	Personnel	Request #	Hours	Reporting Location	
HC2 SALT LAKE 1		10/4	<b>LYLE JENNINGS</b>	18	<b>C-57</b>	0600-1800	CAMP 9	
HC2 PVT FRANCO 44		9/30	<b>JAVIER FRAUSTO</b>	20	<b>C-44</b>	0600-1800	CAMP 9	
HC2 PVT FRANCO 58		10/4	<b>IGNACIO ROJAS</b>	20	<b>C-58</b>	0600-1800	CAMP 9	
HC2 PVT LAVA RIVER 10		10/4	<b>BERNARDO ROQUE</b>	20	<b>C-61</b>	0600-1800	CAMP 9	
ENG1 S/T XLC 1204A		9/30	<b>EATON/OISHI</b>	22	<b>E-400</b>	0600-1800	CAMP 9	
ENG6 PVT LONE WOLF 206		10/5	<b>DAVID SARANTO</b>	3	<b>E-206</b>	0600-1800	CAMP 9	
ENG6 TIMBERLINE BR56		10/4	<b>MIKE WILLARDSON</b>	4	<b>E-210</b>	0600-1800	CAMP 9	
ENG6 PVT AMERICAN FIRE 217		10/5	<b>MATT MORRELL</b>	2	<b>E-217</b>	0600-1800	CAMP 9	
ENG6 PVT AMERICAN FIRE 218		10/5	<b>KATE WEBBER</b>	2	<b>E-218</b>	0600-1800	CAMP 9	
WTT2 PVT UTAH FIRE 231		10/4	<b>ANTHONY GORDON</b>	2	<b>E-231</b>	0600-1800	CAMP 9	
FALM AGUILAR		10/4	<b>RUBAN AGUILAR</b>	1	<b>O-216</b>	0600-1800	CAMP 9	
FAL1 LAAN		10/2	<b>JAMES LAAN</b>	1	<b>O-184</b>	0600-1800	CAMP 9	
EMPF HIBBARD			<b>JASON HIBBARD</b>	1	<b>O-324</b>	0600-1800	CAMP 9	
EMTF BENNET-SNOW		10/3	<b>JOSH BENNET-SNOW</b>	1	<b>O-16</b>	0600-1800	CAMP 9	
SOFR ANDERSON (DIVS A & C)		9/30	<b>STAN LEE ANDERSON</b>	1	<b>O-146</b>	0600-1800	CAMP 9	
WTT1 P10 38					<b>E-441</b>			

**6. Work Assignments:**

- Complete direct and indirect control line from Division A/C break south toward Division C/E break.
- Mop-up to the extent necessary to keep fire within containment lines.
- Mop-up around the structure off of the 22S21 Road and Peppermint Campground off of the Lloyd Meadow Road.
- Mop-up and secure areas around the Trail of 100 Giants.

**7. Special Instructions:**

- Use appropriate suppression tactics based on current and expected fire behavior to protect the values at risk.
- Follow all COVID-19 protocols and utilize appropriate PPE and social distancing to enhance personnel safety.
- Be advised that insurance company resources may be in the Division and are NON-ASSIGNED and NON-FIRE.

**8. Communications**

Name	Ch	Function	Rx Freq	Rx Tone	Tx Freq	Tx Tone	Notes
NIFC C1	1	COMMAND	170.9750N	T5 - 146.2	168.7000N	T5 - 146.2	Jordan - North
NIFC T3	7	TACTICAL	168.6000N	T5 - 146.2	168.6000N	T5 - 146.2	DIV C
A/G TAC	14	A/G TAC	167.9875N		167.9875N		ALL DIVISIONS
CALCORD	15	MEDICAL	156.0750N	T6 - 156.7	156.0750N	T6 - 156.7	Medical
GUARD 25	16	AIRGUARD	168.6250N		168.6250N	T1 - 110.9	EMERGENCY
CALCORD	19	MEDICAL	156.0750N	T6 - 156.7	156.0750N	T6 - 156.7	Medical
GUARD 25	20	AIRGUARD	168.6250N		168.6250N	T1 - 110.9	EMERGENCY

**9. Prepared by: Name:** Harry Kelmanson, Ryan Resnick, Kelly Smyth(t), Robert Villa(t)                      RESL

Signature: \_\_\_\_\_

ICS 204                      Date/Time: 9/28/2021                      2200                      Personnel Count: 118



# ASSIGNMENT LIST (ICS 204 WF)

CONTROLLED UNCLASSIFIED  
INFORMATION/BASIC

<b>1. Incident Name:</b> <b>WINDY FIRE</b>	<b>2. Operational Period:</b> Date From: 09/29/21    Date To: 09/30/21 Time From: 0600    Time To: 0600	<b>3. Branch</b> <b>3</b>	<b>Division</b> <b>E</b>
<b>4. Operations Personnel:</b>		Page 1 of 2	Echo

Operations Section Chief: <b>Steve Burns, Caleb Finch(t)</b>	Night Ops: <b>Dave Provencio</b>
Branch Director: <b>Billy Steers</b>	Branch Safety:
Division/Group Supervisor: <b>Jimmy Hidalgo, Danny Garcia(t)</b>	Air Attack: <b>Skylar Dalton, Alex Ihle</b>

5. Resources Assigned:		** Resources Below in Bold are 12 Hour **					
Resource Identifier	ALS	LWD	Leader	Personnel	Request #	Hours	Reporting Location
HC1 VALYERMO IHC		10/10	<b>SIMEON HAGENS</b>	18	<b>C-73</b>	0600-1800	CAMP 9
HC1 SIERRA IHC		10/10	<b>ALAN ROBY</b>	19	<b>C-94</b>	0600-1800	CAMP 9
HC1 VISTA GRANDE IHC		10/11	<b>HOWARD DEETS</b>	19	<b>C-97</b>	0600-1800	CAMP 9
HC2I UKONOM		10/11	<b>JOEL BERG</b>	18	<b>C-90</b>	0600-1800	CAMP 9
<del>HC2 PVT WEST COAST 60</del>		<del>10/4</del>	<del>HOMERO HERNANDEZ</del>	<del>20</del>	<del>C-60</del>	<del>0600-1800</del>	<del>CAMP 9</del> No Show
HC2 PVT ROCHA 93		10/12	<b>ANDY CRUZ</b>	20	<b>C-93</b>	0600-1800	CAMP 9
WFM2 WHISKEY FLATS 136		9/30	<b>RICHARD BAKER</b>	9	<b>O-136</b>	0600-1800	CAMP 9
ENG3 S/T KRCC 5210C		10/9	<b>SEAN RILEY</b>	17	<b>E-480</b>	0600-1800	CAMP 9
ENG3 CARBONDALE 84		10/4	<b>DEAN PERKINS</b>	3	<b>E-423</b>	0600-1800	CAMP 9
DOZ2 LPF 4		10/9	<b>GILBERT ROSALES</b>	3	<b>E-312</b>	0600-1800	CAMP 9
DOZ2 BDF 3		10/10	<b>DAREN HOWARD</b>	2	<b>E-316</b>	0600-1800	CAMP 9
<del>DOZ2 PVT NEHRIG 313</del>		<del>10/9</del>	<del>FRED NEHRIG</del>	<del>3</del>	<del>E-313</del>	<del>0600-1800</del>	<del>CAMP 9</del> No Show
<del>DOZ3 PVT LOVATO 318</del>		<del>10/9</del>	<del>NATHANEAL LOVATO</del>	<del>2</del>	<del>E-318</del>	<del>0600-1800</del>	<del>CAMP 9</del> No Show
<del>WTT1 PIO 38 -&gt; DIV C</del>					<b>E-441</b>	0600-1800	CAMP 9
<del>WTT2 SAGLE FD 1226</del>		<del>10/9</del>	<del>JOSEPH BANELEY</del>	<del>2</del>	<del>E-266</del>	<del>0600-1800</del>	<del>CAMP 9</del> No Show
<del>WTT2 BDF 51</del>		<del>10/9</del>	<del>FELIPE DELGADO</del>	<del>1</del>	<del>E-319</del>	<del>0600-1800</del>	<del>CAMP 9</del> No Show
<del>WTT2 PVT ELEVATORSKI T11</del>		<del>10/11</del>	<del>MATT THOMAS</del>	<del>1</del>	<del>E-445</del>	<del>0600-1800</del>	<del>CAMP 9</del> No Show
<del>WTS2 PVT 49ER 60</del>		<del>10/10</del>	<del>DICK SASSER</del>	<del>1</del>	<del>E-60</del>	<del>0600-1800</del>	<del>CAMP 9</del> No Show

- 6. Work Assignments:**
- Prep the 16 Road from fire's edge east to the Division E/J break towards Spear Creek Summer Home Track.
  - Initiate firing in the area of Tobias Peak to keep fire west of the 16 Road.
  - Monitor fire's progression in Kern River Drainage near the community of Fair View.
  - Prep and defend the community of Fair View in case fire spots into the community.
  - Coordinate the structure wrapping of Baker Point Lookout.

- 7. Special Instructions:**
- Use appropriate suppression tactics based on current and expected fire behavior to protect the values at risk.
  - Follow all COVID-19 protocols and utilize appropriate PPE and social distancing to enhance personnel safety.
  - Be advised that insurance company resources may be in the Division and are NON-ASSIGNED and NON-FIRE.

**8. Communications**

Name	Ch	Function	Rx Freq	Rx Tone	Tx Freq	Tx Tone	Notes
NIFC C28	4	COMMAND	170.0750N	T5 - 146.2	164.0125N	T5 - 146.2	Baker Peak Lookout - East
NIFC T5	8	TACTICAL	166.7250N	T5 - 146.2	166.7250N	T5 - 146.2	DIV E-NIGHT C/E
A/G TAC	14	A/G TAC	167.9875N		167.9875N		ALL DIVISIONS
CALCORD	15	MEDICAL	156.0750N	T6 - 156.7	156.0750N	T6 - 156.7	Medical
GUARD 25	16	AIRGUARD	168.6250N		168.6250N	T1 - 110.9	EMERGENCY
CALCORD	19	MEDICAL	156.0750N	T6 - 156.7	156.0750N	T6 - 156.7	Medical
GUARD 25	20	AIRGUARD	168.6250N		168.6250N	T1 - 110.9	EMERGENCY

**9. Prepared by: Name:** Harry Kelmanson, Ryan Resnick, Kelly Smyth(t), Robert Villa(t)    RESL

Signature: \_\_\_\_\_

ICS 204    Date/Time: 9/28/2021    2200    Personnel Count: 158



# ASSIGNMENT LIST (ICS 204 WF)

CONTROLLED UNCLASSIFIED  
INFORMATION//BASIC

<b>1. Incident Name:</b> <b>WINDY FIRE</b>	<b>2. Operational Period:</b> Date From: 09/29/21    Date To: 09/30/21 Time From: 0600    Time To: 0600	<b>3. Branch</b> <b>3</b>	<b>Division</b> <b>E</b>
---	---	------------------------------	-----------------------------

**4. Operations Personnel:** Page 2 of 2    Echo

Operations Section Chief: <b>Steve Burns, Caleb Finch(t)</b>	Night Ops: <b>Dave Provencio</b>
Branch Director: <b>Billy Steers</b>	Branch Safety:
Division/Group Supervisor: <b>Jimmy Hidalgo, Danny Garcia(t)</b>	Air Attack: <b>Skylar Dalton, Alex Ihle</b>

5. Resources Assigned:		** Resources Below in Bold are 12 Hour **					
Resource Identifier	ALS	LWD	Leader	Personnel	Request #	Hours	Reporting Location
<del>WTS2 PVT JARDINE'S 444</del>		10/9	<del>BRADLEY JARDINE</del>	<del>1</del>	<del>E-444</del>	<del>0600-1800</del>	<del>CAMP 9</del> <i>No Show</i>
TFLD (T) ANDERSON		10/9	BRIAN ANDERSON	1	O-391	0600-1800	CAMP 9
<del>EMPF POSSERT</del>		**	<del>**NEED TO CHECK IN**</del>	<del>**</del>	<del>E-460</del>	<del>**</del>	<del>CAMP 9</del> <i>No Show</i>
<del>EMPF THOMAS</del>		10/11	<del>AARON THOMAS</del>	<del>1</del>	<del>O-382</del>	<del>0600-1800</del>	<del>CAMP 9</del> <i>No Show</i>
<del>EMTF HENNING</del>		**	<del>**NEED TO CHECK IN**</del>	<del>**</del>	<del>E-460</del>	<del>**</del>	<del>CAMP 9</del> <i>No Show</i>
<del>EMTF JOHNSON</del>		10/12	<del>JUSTIN JOHNSON</del>	<del>1</del>	<del>O-514</del>	<del>0600-1800</del>	<del>CAMP 9</del> <i>No Show</i>
SOFR GARCIA		10/11	ROLAND GARCIA	1	O-441	0600-1800	CAMP 9
<i>HC 2 WOOD CONST 37</i>					<i>C-37</i>	<i>From</i>	
<i>BAKER RIVER HCL</i>					<i>C-54</i>	<i>From NIGHTS DIV A</i>	
<i>HC 2 NORTH PACIFIC 34</i>					<i>C-84</i>	<i>From NIGHTS DIVS</i>	
<del><i>HC 2 PRT BLUE MOUNTAIN 86</i></del>					<del><i>C-86</i></del>	<del><i>From NIGHTS DIVS</i></del>	
<i>FAL 2 SMITH</i>					<i>O-466</i>	<i>From UNASSIGNED</i>	
<i>FAL 2 MACESEY</i>					<i>O-437</i>	<i>From UNASSIGNED</i>	
<i>WTTZ LPF 5</i>					<i>E-513</i>	<i>From UNASSIGNED</i>	

- 6. Work Assignments:**
- Prep the 16 Road from fire's edge east to the Division E/J break towards Spear Creek Summer Home Track.
  - Initiate firing in the area of Tobias Peak to keep fire west of the 16 Road.
  - Monitor fire's progression in Kern River Drainage near the community of Fair View.
  - Prep and defend the community of Fair View in case fire spots into the community.
  - Coordinate the structure wrapping of Baker Point Lookout.

- 7. Special Instructions:**
- Use appropriate suppression tactics based on current and expected fire behavior to protect the values at risk.
  - Follow all COVID-19 protocols and utilize appropriate PPE and social distancing to enhance personnel safety.
  - Be advised that insurance company resources may be in the Division and are NON-ASSIGNED and NON-FIRE.

**8. Communications**

Name	Ch	Function	Rx Freq	Rx Tone	Tx Freq	Tx Tone	Notes
NIFC C28	4	COMMAND	170.0750N	T5 - 146.2	164.0125N	T5 - 146.2	Baker Peak Lookout - East
NIFC T5	8	TACTICAL	166.7250N	T5 - 146.2	166.7250N	T5 - 146.2	DIV E-NIGHT C/E
A/G TAC	14	A/G TAC	167.9875N		167.9875N		ALL DIVISIONS
CALCORD	15	MEDICAL	156.0750N	T6 - 156.7	156.0750N	T6 - 156.7	Medical
GUARD 25	16	AIRGUARD	168.6250N		168.6250N	T1 - 110.9	EMERGENCY
CALCORD	19	MEDICAL	156.0750N	T6 - 156.7	156.0750N	T6 - 156.7	Medical
GUARD 25	20	AIRGUARD	168.6250N		168.6250N	T1 - 110.9	EMERGENCY

**9. Prepared by: Name:** Harry Kelmanson, Ryan Resnick, Kelly Smyth(t), Robert Villa(t)    RESL    Signature: *KF*

ICS 204    Date/Time: 9/28/2021    2200    Personnel Count: #VALUE!



# ASSIGNMENT LIST (ICS 204 WF)

CONTROLLED UNCLASSIFIED  
INFORMATION/BASIC

<b>1. Incident Name:</b> <b>WINDY FIRE</b>	<b>2. Operational Period:</b> Date From: 09/29/21      Date To: 09/30/21 Time From: 0600              Time To: 0600	<b>3. Branch</b> <b>Division</b>  <b>3</b> <b>J</b>  Page 1 of 2                          Juliet
---	---	--

<b>4. Operations Personnel:</b>	
Operations Section Chief: <b>Steve Burns, Caleb Finch(t)</b>	Night Ops: <b>Dave Provencio</b>
Branch Director: <b>Billy Steers</b>	Branch Safety:
Division/Group Supervisor: <b>B. Johnson, Tim Snyder(t)</b>	Air Attack: <b>Skylar Dalton, Alex Ihle</b>

<b>5. Resources Assigned:</b>		** Resources Below in Bold are 12 Hour **					
Resource Identifier	ALS	LWD	Leader	Personnel	Request #	Hours	Reporting Location
HC1 FULTON IHC		10/3	<b>JOSH ACOSTA</b>	20	<b>C-42</b>	0600-1800	CAMP 9
HC1 MILLCREEK		10/9	<b>JOHN ELLISON</b>	20	<b>C-74</b>	0600-1800	CAMP 9
<del>HC2IA COBRAS T</del> <span style="color: red;">TO -&gt; DIV 14</span>		10/3	<b>FRANCISCO CASTELLANOS</b>	21	<b>C-91</b>	0600-1800	CAMP 9
HC2 SUNDOWNERS		9/30	<b>BRIAN MARKS</b>	19	<b>C-55</b>	0600-1800	CAMP 9
ENG3 S/T XKIC 5053C		10/6	<b>SAL GUTIERREZ</b>	18	<b>E-332</b>	0600-1800	CAMP 9
ENG T/F OES 0805		10/1	<b>TURNER/MAKEMSON</b>	15	<b>E-277</b>	0600-1800	CAMP 9
ENG T/F OES 1803		10/7	<b>MIKE BROWN</b>	18	<b>E-335</b>	0600-0600	CAMP 9
ENG6 NCF LOCHSA 642		10/5	<b>DARLAN BELL</b>	9	<b>E-212</b>	0600-1800	CAMP 9
ENG6 PVT PICKERING 202		10/5	<b>JOSEPH GODDARD</b>	3	<b>E-202</b>	0600-1800	CAMP 9
ENG6 PVT COHO 216		10/5	<b>MARIO PEREZ</b>	2	<b>E-216</b>	0600-1800	CAMP 9
WTT2 AZ SJO 268		10/7	<b>CHRIS STRUBLE</b>	2	<b>E-268</b>	0600-1800	CAMP 9
WTS2 PVT CATE LAND 61		10/2	<b>RUSTY LEFLAR</b>	1	<b>E-61</b>	0600-1800	CAMP 9
WTS2 PVT JARED TRUCKING 113		10/4	<b>CARROLL LEWIS</b>	1	<b>E-113</b>	0600-1800	CAMP 9
FAL1 JACKSON		10/5	<b>KYLE JACKSON</b>	1	<b>O-272</b>	0600-1800	CAMP 9
FOBS BUSBY		9/29	<b>KYLE BUSBY</b>	1	<b>O-277</b>	0600-1800	CAMP 9
FOBS(T) LEE		10/2	<b>ANDREW LEE</b>	1	<b>O-167</b>	0600-1800	CAMP 9
REMS YOSEMITE		10/11	<b>JACK CRAMER</b>		<b>O-481</b>	0600-1800	<del>CAMP 9</del> <span style="color: red;">DTP 6</span>
EMPF PINGREE		10/5	<b>BRIAN PINGREE</b>	1	<b>S-228</b>	0600-1800	CAMP 9

- 6. Work Assignments:**
- Provide structure defense within the communities of Sugarloaf and Tobias Peak Area.
  - Continue to construct direct and indirect line from the Sugarloaf Road to the J/E break along the 16 Road.
  - Improve and strengthen direct holding lines.
  - ~~- Coordinate the structure wrapping of the Baker Point Lookout.~~ DIV E
  - Continue to scout and construct contingency lines.
  - Continue prep on 2316 and prepare for possible ignitions.

- 7. Special Instructions:**
- Use appropriate suppression tactics based on current and expected fire behavior to protect the values at risk.
  - Follow all COVID-19 protocols and utilize appropriate PPE and social distancing to enhance personnel safety.
  - Be advised that the following insurance company resources will be in the Division and are NON-ASSIGNED and NON-FIRE: L-718, E-5414, E-5430, E-654, MOD-903, BUTTER FIRE E-47, BUTTER FIRE E-582.
- \*\*REPORT TO CAMP 9 AT END OF SHIFT FOR MEALS/ACCOMODATIONS: 857 Sierra Way, Kernville, CA\*\*

**8. Communications**

Name	Ch	Function	Rx Freq	Rx Tone	Tx Freq	Tx Tone	Notes
NIFC C12	3	COMMAND	173.0375N	T5 - 146.2	167.3250N	T5 - 146.2	Tobias Peak - South
NIFC SP 2	12	TACTICAL	169.1000N	T5 - 146.2	169.1000N	T5 - 146.2	DIV JY-NIGHT J
A/G TAC	14	A/G TAC	167.9875N		167.9875N		ALL DIVISIONS
CALCORD	15	MEDICAL	156.0750N	T6 - 156.7	156.0750N	T6 - 156.7	Medical
GUARD 25	16	AIRGUARD	168.6250N		168.6250N	T1 - 110.9	EMERGENCY
CALCORD	19	MEDICAL	156.0750N	T6 - 156.7	156.0750N	T6 - 156.7	Medical
GUARD 25	20	AIRGUARD	168.6250N		168.6250N	T1 - 110.9	EMERGENCY

**9. Prepared by: Name:** Harry Kelmanson, Ryan Resnick, Kelly Smyth(t), Robert Villa(t)      RESL      Signature:

ICS 204      Date/Time: 9/28/2021      2200      Personnel Count: 153







# ASSIGNMENT LIST (ICS 204 WF)

CONTROLLED UNCLASSIFIED  
INFORMATION//BASIC

<b>1. Incident Name:</b> <b>WINDY FIRE</b>	<b>2. Operational Period:</b> Date From: 09/29/21    Date To: 09/30/21 Time From: 0600            Time To: 0600	<b>3. Branch</b> <b>Division</b>  <b>3</b> <b>K</b>  Page 1 of 1                          Kilo
---	---	--

<b>4. Operations Personnel:</b>	
Operations Section Chief: <b>Steve Burns, Caleb Finch(t)</b>	Night Ops: <b>Dave Provencio</b>
Branch Director: <b>Billy Steers</b>	Branch Safety:
Division/Group Supervisor: <b>Harold Cook, Kris Baumgartner(t)</b>	Air Attack: <b>Skylar Dalton, Alex Ihle</b>

<b>5. Resources Assigned:</b>		<b>** Resources Below in Bold are 12 Hour **</b>					
Resource Identifier	ALS	LWD	Leader	Personnel	Request #	Hours	Reporting Location
HC1 PIONEER PEAK IHC		10/3	<b>KRIS BAUMGARTNER</b>	23	<b>C-56</b>	<b>0600-1800</b>	<b>PORTERVILLE CAMP</b>
HC21A PVT LOST RIVER 53		10/3	<b>AARON VASILIS</b>	19	<b>C-53</b>	<b>0600-1800</b>	<b>PORTERVILLE CAMP</b>
HC2 GRIZZLY		10/2	<b>SOLIZE ORTIZ</b>	20	<b>C-38</b>	<b>0600-1800</b>	<b>PORTERVILLE CAMP</b>
HC2 COBRAS 6		9/30	<b>COREY BENO</b>	20	<b>C-65</b>	<b>0600-1800</b>	<b>PORTERVILLE CAMP</b>
ENG1 S/T OES 5813A		9/30	<b>JOE ROSA</b>	21	<b>E-399</b>	<b>0600-0600</b>	<b>PORTERVILLE CAMP</b>
ENG6 PVT L&R REFOREST 211		10/5	<b>JAY FLORA</b>	3	<b>E-211</b>	<b>0600-1800</b>	<b>PORTERVILLE CAMP</b>
DO22 PVT MCKELLAR 310		10/9	<b>BRETT STRONG</b>	2	<b>E-310</b>	<b>0600-1800</b>	<b>PORTERVILLE CAMP</b>
WTS2 PVT JARED LEWIS 112		<del>10/3</del>	<b>DONALD MIELKE</b>	1	<b>E-112</b>	<b>0600-1800</b>	<b>PORTERVILLE CAMP</b>
WTS3 PVT HURL 449 <i>24 HZ</i>	<i>10/10</i>	<del>10/3</del>	<b>RUSSELL HURL</b>	1	<b>E-449</b>	<del>0600-1800</del>	<b>PORTERVILLE CAMP</b>
FALM SHOLL		10/3	<b>JESSE WILSON</b>	2	<b>O-108</b>	<b>0600-1800</b>	<b>PORTERVILLE CAMP</b>
TFLD MCMILLAN		10/3	<b>MIKE MCMILLAN</b>	1	<b>O-145</b>	<b>0600-1800</b>	<b>PORTERVILLE CAMP</b>
TFLD(T) REYES		10/7	<b>ANGEL REYES</b>	1	<b>O-363</b>	<b>0600-1800</b>	<b>PORTERVILLE CAMP</b>
SOFR MARTIN		10/5	<b>MATT MARTIN</b>	1	<b>O-276</b>	<b>0600-1800</b>	<b>PORTERVILLE CAMP</b>
<i>HZ COBRAS 1</i>					<i>C-91</i>	<i>From DIV J</i>	

**6. Work Assignments:**

- Provide structure defense within the communities of Hot Springs, Pine Flat and White River Summer Homestead.
- Improve and strengthen direct fire lines from DP-5 at Sugarloaf Mountain north to the 50 Road.
- Continue to scout and construct contingency lines as needed to defend communities and gain perimeter control.

**7. Special Instructions:**

- Use appropriate suppression tactics based on current and expected fire behavior to protect the values at risk.
- Follow all COVID-19 protocols and utilize appropriate PPE and social distancing to enhance personnel safety.
- Be advised that the following insurance company resources will be in the Division and are NON-ASSIGNED and NON-FIRE: L-718, E-5414, E-5430, E-654, MOD-903, BUTTER FIRE E-47, BUTTER FIRE E-582.

<b>8. Communications</b>							
Name	Ch	Function	Rx Freq	Rx Tone	Tx Freq	Tx Tone	Notes
NIFC C12	3	COMMAND	173.0375N	T5 - 146.2	167.3250N	T5 - 146.2	Tobias Peak - South
NIFC T1	6	TACTICAL	168.0500N	T5 - 146.2	168.0500N	T5 - 146.2	DIV A/K-NIGHT A
A/G TAC	14	A/G TAC	167.9875N		167.9875N		ALL DIVISIONS
CALCORD	15	MEDICAL	156.0750N	T6 - 156.7	156.0750N	T6 - 156.7	Medical
GUARD 25	16	AIRGUARD	168.6250N		168.6250N	T1 - 110.9	EMERGENCY
CALCORD	19	MEDICAL	156.0750N	T6 - 156.7	156.0750N	T6 - 156.7	Medical
GUARD 25	20	AIRGUARD	168.6250N		168.6250N	T1 - 110.9	EMERGENCY

**9. Prepared by: Name:** Harry Kelmanson, Ryan Resnick, Kelly Smyth(t), Robert Villa(t)                      RESL                      Signature:

**ICS 204**                      Date/Time: 9/28/2021                      2200                      Personnel Count: 115





# ASSIGNMENT LIST (ICS 204 WF)

CONTROLLED UNCLASSIFIED  
INFORMATION/BASIC

<b>1. Incident Name:</b> <p style="text-align: center; font-weight: bold;">WINDY FIRE</p>	<b>2. Operational Period:</b> Date From: 09/29/21      Date To: 09/30/21 Time From: 0600              Time To: 0600	<b>3. Branch</b> <b>Division</b> <p style="text-align: center; font-size: 24pt; font-weight: bold;">4                                  L</p>
--	---	---

**4. Operations Personnel:** Page 1 of 1                      Lima

Operations Section Chief: <b>Steve Burns, Caleb Finch(t)</b>	Night Ops: <b>Dave Provencio</b>
Branch Director: <b>Louis Ermigarat, Tyler Attebury(t)</b>	Branch Safety:
Division/Group Supervisor: <b>Jacob Ching, Warren Browett(t)</b>	Air Attack: <b>Skylar Dalton, Alex Ihle</b>

** Resources Below in Bold are 12 Hour **							
Resource Identifier	ALS	LWD	Leader	Personnel	Request #	Hours	Reporting Location
HC1 S/T MMU 9424G		10/9	HUNTER COMSTOCK	36	C-40005	0600-0600	PORTERVILLE CAMP
ENG3 S/T MMU 9421C		10/8	CRAIG WAAG	18	E-40011	0600-0600	PORTERVILLE CAMP
DOZ2 S/T RRU 9318L		10/7	JORGE SEGURA	7	E-40006	0600-0600	PORTERVILLE CAMP
DOZ2 S/T KRN 9360L		10/12	PAT REBELLO	6	E-40015	<del>0600-0600</del>	PORTERVILLE CAMP
DOZ2 S/T MEU 9118L		10/10	JON COLGAN	8	E-40013	0600-1800	PORTERVILLE CAMP
DOZ2 BDC 40026		10/10	TED MOHR	2	E-40026	0600-1800	PORTERVILLE CAMP
DOZ2 MVU 3341		10/7	ZACHARY WHITE	2	E-40008	0600-1800	PORTERVILLE CAMP
DOZ2 SCU 1641		10/9	CHADD WILBUR	2	E-40014	0600-1800	PORTERVILLE CAMP
DOZ2 KCF9		10/9	CARL LEMOS	4	E-40025	0600-1800	PORTERVILLE CAMP
DOZ2 CZU 1741		10/9	SEAN PYORRE	4	E-40029	0600-1800	PORTERVILLE CAMP
EMPF GILMAN		10/11	MARK S GILMAN	1	O-385	0600-1800	PORTERVILLE CAMP
EMTF OLIVER		10/11	JEFFERY OLIVER	1	O-390	0600-1800	PORTERVILLE CAMP

**6. Work Assignments:**

- Scout fire/branch/division.
- Scout line and gather intelligence within current Division.
- Identify additional needs.

**7. Special Instructions:**

- Use appropriate suppression tactics based on current and expected fire behavior to protect the values at risk.
- Follow all COVID-19 protocols and utilize appropriate PPE and social distancing to enhance personnel safety.
- Be advised that insurance company resources may be in the Division and are NON-ASSIGNED and NON-FIRE.

**8. Communications**

Name	Ch	Function	Rx Freq	Rx Tone	Tx Freq	Tx Tone	Notes
NIFC C12	3	COMMAND	173.0375N	T5 - 146.2	167.3250N	T5 - 146.2	Tobias Peak - South
NIFC T7	10	TACTICAL	168.2500N	T5 - 146.2	168.2500N	T5 - 146.2	DIV O/EAST CONTINGENCY
A/G TAC	14	A/G TAC	167.9875N		167.9875N		ALL DIVISIONS
CALCORD	15	MEDICAL	156.0750N	T6 - 156.7	156.0750N	T6 - 156.7	Medical
GUARD 25	16	AIRGUARD	168.6250N		168.6250N	T1 - 110.9	EMERGENCY
CALCORD	19	MEDICAL	156.0750N	T6 - 156.7	156.0750N	T6 - 156.7	Medical
GUARD 25	20	AIRGUARD	168.6250N		168.6250N	T1 - 110.9	EMERGENCY

**9. Prepared by: Name:** Harry Kelmanson, Ryan Resnick, Kelly Smyth(t), Robert Villa(t)      RESL

Signature: \_\_\_\_\_

ICS 204      Date/Time: 9/28/2021      2200      Personnel Count: 91







# ASSIGNMENT LIST (ICS 204 WF)

CONTROLLED UNCLASSIFIED  
INFORMATION/BASIC

<b>1. Incident Name:</b> <p style="text-align: center;"><b>WINDY FIRE</b></p>	<b>2. Operational Period:</b> Date From: 09/29/21      Date To: 09/30/21 Time From: 0600              Time To: 0600	<b>3. Branch</b> <b>Division</b> <p style="text-align: center;"><b>7</b>                                      <b>P/R</b></p>
--	---	---

**4. Operations Personnel:** Page 1 of 3      Papa/Romeo

Operations Section Chief: <b>Steve Burns, Caleb Finch(t)</b>	Night Ops: <b>Dave Provencio</b>
Branch Director: <b>Gary Monday, Shane Santos(t)</b>	Branch Safety:
Division/Group Supervisor: <b>Louie Orozco, Travis Clendenen(t)</b>	Air Attack: <b>Skylar Dalton, Alex Ihle</b>

5. Resources Assigned:		** Resources Below in Bold are 12 Hour **					
Resource Identifier	ALS	LWD	Leader	Personnel	Request #	Hours	Reporting Location
HC1 VENTANA IHC		10/2	<b>HAROLD COOK</b>	19	<b>C-59</b>	0600-1800	PORTERVILLE CAMP
HC2IA SCORPIONS 6		9/30	<b>WALTER MEDINA</b>	19	<b>C-47</b>	0600-1800	PORTERVILLE CAMP
HC2IA BLACK EAGLES 2		10/6	<b>GUSTAVO SANTOYO</b>	21	<b>C-77</b>	0600-1800	PORTERVILLE CAMP
HC2IA KERN VALLEY		10/10	<b>KYLE CLENDENEN</b>	18	<b>C-95</b>	0600-1800	PORTERVILLE CAMP
HC2IA STANISLAUS 20		10/11	<b>BRANDON HULL</b>	19	<b>C-96</b>	0600-1800	PORTERVILLE CAMP
HC2IA PVT GOLDEN EAGLES		10/1	<b>ZACH TRILLIZO</b>	19	<b>C-48</b>	0600-1800	DP-20
HC2 PVT FRANCO 35		9/29	<b>MIGUEL OROZCO</b>	20	<b>C-35</b>	0600-1800	PORTERVILLE CAMP
HC2 RANCHERIA 81		10/5	<b>LOUIS MILLIS</b>	9	<b>C-64</b>	0600-1800	DP-20
HC2 PVT FRANCO 36		10/1	<b>LEO RASCH</b>	36	<b>C-36</b>	0600-1800	PORTERVILLE CAMP
HC2 PVT OREGON WOODS 46		10/1	<b>CHRISTOPHER ATWOOD</b>	20	<b>C-46</b>	0600-1800	PORTERVILLE CAMP
HC2 PVT STEELHEAD 63		10/5	<b>JAKE PLACE</b>	20	<b>C-63</b>	0600-1800	PORTERVILLE CAMP
HC2 PVT FRANCO 67		10/7	<b>NOE FRANCO</b>	20	<b>C-67</b>	0600-1800	PORTERVILLE CAMP
HC2 PVT FRANCO 68		10/7	<b>RAFAEL ALCANTAR</b>	20	<b>C-68</b>	0600-1800	PORTERVILLE CAMP
HC2 PVT LAVA RIVER 82 <i>9</i>		10/10	<b>JOE LOPEZ</b>	20	<del>C-81</del> <del>C-82</del>	0600-1800	PORTERVILLE CAMP
SMOD SLATE MOUNTAIN		10/7	<b>CESAR TORRES</b>	9	<b>O-450</b>	0600-1800	PORTERVILLE CAMP
ENG3 S/T OES 6808C <i>24 HC</i>	<i>10/8</i>	<i>9/24</i>	<b>SCOTT WILSON</b>	24	<b>E-251</b>	0600-1800	PORTERVILLE CAMP
ENG3 S/T OES 6848C <i>24 HC</i>		10/7	<b>BEN ROSENTHAL</b>	22	<b>E-333</b>	0600-1800	PORTERVILLE CAMP
ENG3 SNF 313		10/4	<b>GILBERT MOISA</b>	5	<b>E-122</b>	0600-1800	PORTERVILLE CAMP

**6. Work Assignments:**

P: - Construct indirect line from Lone Pine Mountain north towards Wheatons.  
 - Keep fire east of the Tule River Reservation community.

R: - Construct direct and indirect line from the Division R/Y break south towards Wheatons utilizing the Two and a Quarter Road.  
 - Keep fire east of the Tule River Reservation community.  
 - Continue to monitor and patrol the Cholollo Campground.

**7. Special Instructions:**

- Use appropriate suppression tactics based on current and expected fire behavior to protect the values at risk.
- Follow all COVID-19 protocols and utilize appropriate PPE and social distancing to enhance personnel safety.
- Be advised that insurance company resources may be in the Division and are NON-ASSIGNED and NON-FIRE.
- Mop-up to the extent necessary to protect the Giant Sequoia groves.

**8. Communications**

Name	Ch	Function	Rx Freq	Rx Tone	Tx Freq	Tx Tone	Notes
NIFC C9	2	COMMAND	170.0125N	T5 - 146.2	165.2500N	T5 - 146.2	Mule Peak - Central
NIFC SP 1	11	TACTICAL	166.6000N	T5 - 146.2	166.6000N	T5 - 146.2	DIV P/R
A/G TAC	14	A/G TAC	167.9875N		167.9875N		ALL DIVISIONS
CALCORD	15	MEDICAL	156.0750N	T6 - 156.7	156.0750N	T6 - 156.7	Medical
GUARD 25	16	AIRGUARD	168.6250N		168.6250N	T1 - 110.9	EMERGENCY
CALCORD	19	MEDICAL	156.0750N	T6 - 156.7	156.0750N	T6 - 156.7	Medical
GUARD 25	20	AIRGUARD	168.6250N		168.6250N	T1 - 110.9	EMERGENCY

**9. Prepared by: Name:** Harry Kelmanson, Ryan Resnick, Kelly Smyth(t), Robert Villa(t)      RESL      Signature: *KF*

ICS 204      Date/Time: 9/28/2021      2200      Personnel Count: 340



# ASSIGNMENT LIST (ICS 204 WF)

CONTROLLED UNCLASSIFIED  
INFORMATION//BASIC

<b>1. Incident Name:</b> <p style="text-align: center; font-weight: bold;">WINDY FIRE</p>	<b>2. Operational Period:</b> Date From: 09/29/21      Date To: 09/30/21 Time From: 0600              Time To: 0600	<b>3. Branch</b> <b>Division</b> <p style="text-align: center; font-size: 24pt; font-weight: bold;">7                                  P/R</p>
--	---	---

<b>4. Operations Personnel:</b>		Page 2 of 3      Papa/Romeo
Operations Section Chief: <b>Steve Burns, Caleb Finch(t)</b>	Night Ops: <b>Dave Provencio</b>	
Branch Director: <b>Gary Monday, Shane Santos(t)</b>	Branch Safety:	
Division/Group Supervisor: <b>Louie Orozco, Travis Clendenen(t)</b>	Air Attack: <b>Skylar Dalton, Alex Ihle</b>	

5. Resources Assigned:	** Resources Below in Bold are 12 Hour **							
Resource Identifier	ALS	LWD	Leader	Personnel	Request #	Hours	Reporting Location	
ENG3 CHUMASH CHU 801		10/13	<b>RICHARD GARCIA</b>	5	E-481	0600-1800	PORTERVILLE CAMP	
ENG3 PVT J3 CONTRACTING 227		10/7	<b>WYATT LAWRENCE</b>	3	E-227	0600-1800	DP-20	
ENG4 PVT CASTLE MOUNTAIN 9		10/3	<b>CHASE CORK</b>	3	E-9	0600-1800	DP-20	
ENG4 451		10/10	<b>KYLE WALLER</b>	5	E-458	0600-1800	PORTERVILLE CAMP	
ENG6 696 <i>Demo 12</i>		10/5	<b>WILLIS MCDARMENT</b>	3	E-123	0600-1800	PORTERVILLE CAMP	
ENG6 TIA E694 <i>Demo 12</i>		9/22	<b>STORDY DICK</b>	3	E-132	0600-1800	PORTERVILLE CAMP	
ENG6 CHUMASH CHU 802		10/13	<b>NELSON PALATO</b>	3	E-482	0600-1800	PORTERVILLE CAMP	
ENG6 PVT FLASHOVER 209		10/5	<b>SHANE BOETTCHER</b>	2	E-209	0600-1800	DP-20	
ENG6 PVT FIRST STRIKE 214		10/5	<b>SPENCER BERLIER</b>	3	E-214	0600-1800	DP-20	
ENG6 PVT EAGLE CAP 221		10/6	<b>JOE RIVERA</b>	3	E-221	0600-1800	PORTERVILLE CAMP	
DOZ2 PVT MOOSIOS 12		10/8	<b>BRANDON GONCLAVES</b>	2	E-12	0600-1800	PORTERVILLE CAMP	
DOZ2 PVT CAROTHERS 379		<i>10/10</i> <b>10/4</b>	<b>JOEL BUCK</b>	2	E-379	0600-1800	PORTERVILLE CAMP	
DOZ3 PVT ZX 62		10/9	<b>DOUG GROVE</b>	2	E-62	0600-1800	PORTERVILLE CAMP	
DOZ3 PVT FISK'S 64		10/3	<b>JOHN CHARD</b>	2	E-64	0600-1800	PORTERVILLE CAMP	
WTT1 PVT KB WATERTRUCK 56		10/3	<b>KYLE LAWLESS</b>	1	E-56	0600-1800	PORTERVILLE CAMP	
WTS2 PVT HOME STYLE 57		<i>10/10</i> <b>10/2</b>	<b>PETE DAHL-BREDINE</b>	1	E-57	0600-1800	PORTERVILLE CAMP	
FALM PVT SWEDBERG		10/2	<b>KELLY COLTEN</b>	2	O-107	0600-1800	PORTERVILLE CAMP	
FALM DENIZ		10/5	<b>RYAN DENIZ</b>	2	O-271	0600-1800	DP-20	

**6. Work Assignments:**

P: - Construct indirect line from Lone Pine Mountain north towards Wheatons.  
 - Keep fire east of the Tule River Reservation community.

R: - Construct direct and indirect line from the Division R/Y break south towards Wheatons utilizing the Two and a Quarter Road.  
 - Keep fire east of the Tule River Reservation community.  
 - Continue to monitor and patrol the Cholollo Campground.

**7. Special Instructions:**

- Use appropriate suppression tactics based on current and expected fire behavior to protect the values at risk.
- Follow all COVID-19 protocols and utilize appropriate PPE and social distancing to enhance personnel safety.
- Be advised that insurance company resources may be in the Division and are NON-ASSIGNED and NON-FIRE.
- Mop-up to the extent necessary to protect the Giant Sequoia groves.

8. Communications							
Name	Ch	Function	Rx Freq	Rx Tone	Tx Freq	Tx Tone	Notes
NIFC C9	2	COMMAND	170.0125N	T5 - 146.2	165.2500N	T5 - 146.2	Mule Peak - Central
NIFC SP 1	11	TACTICAL	166.6000N	T5 - 146.2	166.6000N	T5 - 146.2	DIV P/R
A/G TAC	14	A/G TAC	167.9875N		167.9875N		ALL DIVISIONS
CALCORD	15	MEDICAL	156.0750N	T6 - 156.7	156.0750N	T6 - 156.7	Medical
GUARD 25	16	AIRGUARD	168.6250N		168.6250N	T1 - 110.9	EMERGENCY
CALCORD	19	MEDICAL	156.0750N	T6 - 156.7	156.0750N	T6 - 156.7	Medical
GUARD 25	20	AIRGUARD	168.6250N		168.6250N	T1 - 110.9	EMERGENCY

**9. Prepared by: Name:** Harry Kelmanson, Ryan Resnick, Kelly Smyth(t), Robert Villa(t)      RESL      Signature: *KR*

ICS 204      Date/Time: 9/28/2021      2200      Personnel Count: 47



# ASSIGNMENT LIST (ICS 204 WF)

CONTROLLED UNCLASSIFIED  
INFORMATION//BASIC

<b>1. Incident Name:</b>	<b>2. Operational Period:</b>	<b>3. Branch</b>	<b>Division</b>
<b>WINDY FIRE</b>	Date From: 09/29/21      Date To: 09/30/21 Time From: 0600              Time To: 0600	<b>7</b>	<b>P/R</b>

<b>4. Operations Personnel:</b>		Page 3 of 3	Papa/Romeo
Operations Section Chief: <b>Steve Burns, Caleb Finch(t)</b>	Night Ops: <b>Dave Provencio</b>		
Branch Director: <b>Gary Monday, Shane Santos(t)</b>	Branch Safety:		
Division/Group Supervisor: <b>Louie Orozco, Travis Clendenen(t)</b>	Air Attack: <b>Skylar Dalton, Alex Ihle</b>		

5. Resources Assigned:		** Resources Below in Bold are 12 Hour **					
Resource Identifier	ALS	LWD	Leader	Personnel	Request #	Hours	Reporting Location
MAST PVT MOOSIOS 286		10/8	<b>MIKE CRAIG</b>	2	<b>E-286</b>	0600-1800	PORTERVILLE CAMP
SKID1 PVT MOOSIOS 131		10/6	<b>CHRISTIAN JANDR</b>	2	<b>E-131</b>	0600-1800	PORTERVILLE CAMP
FAL1 ROBLES		10/8	<b>DANIEL ROBLES</b>	1	<b>O-185</b>	0600-1800	PORTERVILLE CAMP
FELB SANTOS		10/11	<b>GABRIEL SANTOS</b>	1	<b>O-374</b>	0600-1800	PORTERVILLE CAMP
TFLD ROOFENER	10/30	10/31	<b>JAMES ROOFFENER</b>	1	<b>O-489</b>	0600-1800	DP-20
FF1 LANATHOUA (T)	10/30	10/31	<b>JOHN LANATHOUA</b>	1	<b>O-490</b>	0600-1800	PORTERVILLE CAMP
UTV 76					<b>E-76</b>	0600-1800	PORTERVILLE CAMP
EMPF LOOMIS		10/2	<b>DANIEL LOOMIS</b>	1	<b>O-232</b>	0600-1800	PORTERVILLE CAMP
EMTF MCGILL		10/3	<b>TRENTON MCGILL</b>	1	<b>O-221</b>	0600-1800	PORTERVILLE CAMP
SOFR CACHERO		9/29	<b>MICHAEL CACHERO</b>	1	<b>O-226</b>	0600-1800	PORTERVILLE CAMP
<del>TFLD (+) RICE</del>		10/10	<del>CORY RICE</del>	1	?		
<del>ENG 6 PVT 3 RIVERS</del>		10/12	<del>JOSEPH MEYERS</del>	3	<del>E-547</del>		
<del>ENG 6 PVT 3 RIVERS</del>		10/12	<del>WILLIAM HENSLEY</del>	3	<del>E-548</del>		
<del>ENG 6 PVT 3 RIVERS</del>		10/12	<del>JOSEPH MEYERS</del>	3	<del>E-547</del>		

**6. Work Assignments:**

P: - Construct indirect line from Lone Pine Mountain north towards Wheatons.  
 - Keep fire east of the Tule River Reservation community.

R: - Construct direct and indirect line from the Division R/Y break south towards Wheatons utilizing the Two and a Quarter Road.  
 - Keep fire east of the Tule River Reservation community.  
 - Continue to monitor and patrol the Cholollo Campground.

**7. Special Instructions:**

- Use appropriate suppression tactics based on current and expected fire behavior to protect the values at risk.
- Follow all COVID-19 protocols and utilize appropriate PPE and social distancing to enhance personnel safety.
- Be advised that insurance company resources may be in the Division and are NON-ASSIGNED and NON-FIRE.
- Mop-up to the extent necessary to protect the Giant Sequoia groves.

**8. Communications**

Name	Ch	Function	Rx Freq	Rx Tone	Tx Freq	Tx Tone	Notes
NIFC C9	2	COMMAND	170.0125N	T5 - 146.2	165.2500N	T5 - 146.2	Mule Peak - Central
NIFC SP 1	11	TACTICAL	166.6000N	T5 - 146.2	166.6000N	T5 - 146.2	DIV P/R
A/G TAC	14	A/G TAC	167.9875N		167.9875N		ALL DIVISIONS
CALCORD	15	MEDICAL	156.0750N	T6 - 156.7	156.0750N	T6 - 156.7	Medical
GUARD 25	16	AIRGUARD	168.6250N		168.6250N	T1 - 110.9	EMERGENCY
CALCORD	19	MEDICAL	156.0750N	T6 - 156.7	156.0750N	T6 - 156.7	Medical
GUARD 25	20	AIRGUARD	168.6250N		168.6250N	T1 - 110.9	EMERGENCY

**9. Prepared by: Name:** Harry Kelmanson, Ryan Resnick, Kelly Smyth(t), Robert Villa(t)      RESL

Signature:



# ASSIGNMENT LIST (ICS 204 WF)

CONTROLLED UNCLASSIFIED  
INFORMATION//BASIC

<b>1. Incident Name:</b> <b>WINDY FIRE</b>		<b>2. Operational Period:</b> Date From: 09/29/21      Date To: 09/30/21 Time From: 0600              Time To: 0600				<b>3. Branch</b> <b>7</b>		<b>Division</b> <b>Y</b>	
						Page 1 of 2		Yankee	
<b>4. Operations Personnel:</b>					Night Ops: <b>Dave Provencio</b>				
Operations Section Chief: <b>Steve Burns, Caleb Finch(t)</b>			Branch Director: <b>Gary Monday, Shane Santos(t)</b>		Branch Safety:				
Division/Group Supervisor: <b>Eammanuel Torres, Brian Borden(t)</b>			Air Attack: <b>Skylar Dalton, Alex Ihle</b>						
<b>5. Resources Assigned:</b>		<b>** Resources Below in Bold are 12 Hour **</b>							
Resource Identifier	ALS	LWD	Leader	Personnel	Request #	Hours	Reporting Location		
HC1 BIG BEAR IHC		10/6	<b>KEVIN BALDEN</b>	20	C-72	0600-1800	PORTERVILLE CAMP		
HC2 PVT TOM FERY C39		10/2	ALEX GARCIA	20	C-39	0600-1800	PORTERVILLE CAMP		
HC2 PVT ARDEN 66		10/5	IGNACIO SANTANA	20	C-66	0600-1800	PORTERVILLE CAMP		
ENG T/F XTU 5182		9/30	JASON ELIZONDO	11	E-537	0600-1800	PORTERVILLE CAMP		
ENG3 TIA E391		9/30	CURTIS GIBSON	3	E-7	0600-1800	PORTERVILLE CAMP		
ENG3 BLM 8337		10/5	GEORGE JOLICOEUR	4	E-203	0600-1800	PORTERVILLE CAMP		
ENG3 PVT CASTLE MOUNTAIN 213		10/5	BLANE FIFIELD	3	E-213	0600-1800	PORTERVILLE CAMP		
ENG3 PVT HEK JONES 225		10/6	BRINN JONES	3	E-225	0600-1800	PORTERVILLE CAMP		
ENG3 PVT GRAYBACK 226		10/6	CHARLES PALMER	3	E-226	0600-1800	PORTERVILLE CAMP		
ENG4 PVT THUNDERBOLT 12		10/5	WILLIAM REFFETT	3	E-199	0600-1800	PORTERVILLE CAMP		
ENG5 PVT GREAT BASIN 215		9/29	HAL STOKER	3	E-215	0600-1800	PORTERVILLE CAMP		
ENG5 PVT WEST COAST 219		10/6	BRANDON MCCOY	3	E-219	0600-1800	PORTERVILLE CAMP		
ENG5 PVT WEST COAST 220		10/6	NICK MILLER	3	E-220	0600-1800	PORTERVILLE CAMP		
ENG6 PVT ROCKY POINT 116		10/3	KC FRYE	3	E-120	0600-1800	PORTERVILLE CAMP		
ENG6 PVT LATE SUMMERS 222		10/6	NOLAN ETTHENHOLDER	3	E-222	0600-1800	PORTERVILLE CAMP		
ENG6 PVT COHO FORESTRY 224		10/6	JUSTIN OTT	2	E-224	0600-1800	PORTERVILLE CAMP		
DO22 PVT TOUGH 155		9/29	MICHAEL STREETER	2	E-155	0600-1800	PORTERVILLE CAMP		
WTT1 WINDSOR FD 320		10/10	NATHAN BERRYMAN	2	E-320	0600-1800	PORTERVILLE CAMP		
<b>6. Work Assignments:</b>									
<ul style="list-style-type: none"> <li>- Continue to improve and construct handline or dozer line into the Castle and Pier fire perimeter from Black Mountain Sequoia Grove east to Fair Creek.</li> <li>- Utilize appropriate tactics to contain the fire south of Camp Nelson/Coy Flat Area.</li> <li>- Mop-up and patrol the 94 Road as required to ensure the fire stays within current perimeters.</li> <li>- Continue snagging the 94 Road to increase safety for firefighters accessing fire area.</li> </ul>									
<b>7. Special Instructions:</b>									
<ul style="list-style-type: none"> <li>- Use appropriate suppression tactics based on current and expected fire behavior to protect the values at risk.</li> <li>- Follow all COVID-19 protocols and utilize appropriate PPE and social distancing to enhance personnel safety.</li> <li>- Be advised that insurance company resources may be in the Division and are NON-ASSIGNED and NON-FIRE.</li> </ul>									
<b>8. Communications</b>									
Name	Ch	Function	Rx Freq	Rx Tone	Tx Freq	Tx Tone	Notes		
NIFC C1	1	COMMAND	170.9750N	T5 - 146.2	168.7000N	T5 - 146.2	Jordan - North		
NIFC SP 2	12	TACTICAL	169.1000N	T5 - 146.2	169.1000N	T5 - 146.2	DIV J/Y-NIGHT J		
A/G TAC	14	A/G TAC	167.9875N		167.9875N		ALL DIVISIONS		
CALCORD	15	MEDICAL	156.0750N	T6 - 156.7	156.0750N	T6 - 156.7	Medical		
GUARD 25	16	AIRGUARD	168.6250N		168.6250N	T1 - 110.9	EMERGENCY		
CALCORD	19	MEDICAL	156.0750N	T6 - 156.7	156.0750N	T6 - 156.7	Medical		
GUARD 25	20	AIRGUARD	168.6250N		168.6250N	T1 - 110.9	EMERGENCY		
<b>9. Prepared by: Name:</b>		Harry Kelmanson, Ryan Resnick, Kelly Smyth(t), Robert Villa(t)			RESL		Signature:		
ICS 204		Date/Time: 9/28/2021		2200		Personnel Count: 111			









**NIGHT**

# ASSIGNMENT LIST (ICS 204 WF)

CONTROLLED UNCLASSIFIED  
INFORMATION/BASIC

<b>1. Incident Name:</b> <p style="text-align: center;"><b>WINDY FIRE</b></p>	<b>2. Operational Period:</b> Date From: 09/29/21      Date To: 09/30/21 Time From: 0600              Time To: 0600	<b>3. Branch</b> <b>Division</b> <p style="text-align: center;"><b>Night</b>                              <b>A</b></p>
<b>4. Operations Personnel:</b> Operations Section Chief: <b>Steve Burns, Caleb Finch(t)</b> Branch Director: <b>Jesse Knox, Adrian Villegas(t)</b> Division/Group Supervisor: <b>Mark Sachara</b>		Page 1 of 1 <b>Alpha</b>
Night Ops: <b>Dave Provencio</b> Branch Safety: <b>Rob Hickok, Bob Atlas(t)</b> Air Attack: <b>Skylar Dalton, Alex Ihle</b>		

5. Resources Assigned:                      ** Resources Below in Bold are 12 Hour **							
Resource Identifier	ALS	LWD	Leader	Personnel	Request #	Hours	Reporting Location
<del>HC1 BAKER RIVER</del> → DAYS E		10/3	<b>GARY CHICKS</b>	24	C-54	1800-0600	PORTERVILLE CAMP
<del>HC2 PVT WEST COAST</del> 37 DAYS E		10/2	<b>JUAN RAMOS</b>	20	C-37	1800-0600	PORTERVILLE CAMP
HC2 PVT TOM FERY 40		10/2	<b>SERAFIN GARCIA</b>	20	C-40	1800-0600	PORTERVILLE CAMP
HC2 PVT WILLAMETTE VAL 49		10/2	<b>JESSE MONTANA</b>	20	C-49	1800-0600	PORTERVILLE CAMP
HC2 PVT ISA 69		10/8	<b>GUSTAVO BUENO</b>	20	C-69	1800-0600	PORTERVILLE CAMP
ENG3 ENGINE 5329		10/4	<b>JAMIE DUFFY</b>	3	E-196	1800-0600	PORTERVILLE CAMP
ENG6 PVT FIRST STRIKE 194		10/4	<b>ROBERT HUMBERT</b>	3	E-194	1800-0600	PORTERVILLE CAMP
ENG6 PVT GRAYBACK 200		10/4	<b>ERNEST SMITH</b>	3	E-200	1800-0600	PORTERVILLE CAMP
ENG6 PVT TOP NOTCH 528		10/4	<b>RYAN VIGAL</b>	3	E-204	1800-0600	PORTERVILLE CAMP
EMTF ROE (BRANCH RESOURCE)		9/30	<b>JEFF ROE</b>	1	O-144	1800-0600	PORTERVILLE CAMP
EMPF GRAY (BRANCH RESOURCE)		9/30	<b>NICK GRAY</b>	1	O-142	1800-0600	PORTERVILLE CAMP

**6. Work Assignments:**

- Maintain tactical patrol of fire's progression towards Ponderosa, Peppermint Campground, Mountaineer and Coy Flat Road.
- Mop-up and patrol to the extent necessary to protect values at risk.

**7. Special Instructions:**

- Use appropriate suppression tactics based on current and expected fire behavior to protect the values at risk.
- Follow all COVID-19 protocols and utilize appropriate PPE and social distancing to enhance personnel safety.
- Be advised that insurance company resources may be in the Division and are NON-ASSIGNED and NON-FIRE.

8. Communications							
Name	Ch	Function	Rx Freq	Rx Tone	Tx Freq	Tx Tone	Notes
NIFC C1	1	COMMAND	170.9750N	T5 - 146.2	168.7000N	T5 - 146.2	Jordan - North
NIFC T1	6	TACTICAL	168.0500N	T5 - 146.2	168.0500N	T5 - 146.2	DIV A/K-NIGHT A
A/G TAC	14	A/G TAC	167.9875N		167.9875N		ALL DIVISIONS
CALCORD	15	MEDICAL	156.0750N	T6 - 156.7	156.0750N	T6 - 156.7	Medical
GUARD 25	16	AIRGUARD	168.6250N		168.6250N	T1 - 110.9	EMERGENCY
CALCORD	19	MEDICAL	156.0750N	T6 - 156.7	156.0750N	T6 - 156.7	Medical
GUARD 25	20	AIRGUARD	168.6250N		168.6250N	T1 - 110.9	EMERGENCY

<b>9. Prepared by: Name:</b>	Harry Kelmanson, Ryan Resnick, Kelly Smyth(t), Robert Villa(t)	RESL	Signature:
ICS 204	Date/Time: 9/28/2021	2200	Personnel Count: 118





# ASSIGNMENT LIST (ICS 204 WF)

CONTROLLED UNCLASSIFIED  
INFORMATION/BASIC

<b>1. Incident Name:</b> <b>WINDY FIRE</b>	<b>2. Operational Period:</b> Date From: 09/29/21    Date To: 09/30/21 Time From: 0600            Time To: 0600	<b>3. Branch</b> <b>Division</b> <b>Night</b> <b>J</b>  Page 1 of 2 <b>Juliet</b>
---	---	--

**4. Operations Personnel:**  
 Operations Section Chief: **Steve Burns, Caleb Finch(t)**                      Night Ops: **Dave Provencio**  
 Branch Director: **Jesse Knox, Adrian Villegas(t)**                      Branch Safety: **Rob Hickok, Bob Atlas(t)**  
 Division/Group Supervisor: **Justin Yankey, Philip Quigley(t)**                      Air Attack: **Skylar Dalton, Alex Ihle**

5. Resources Assigned:		** Resources Below in Bold are 12 Hour **					
Resource Identifier	ALS	LWD	Leader	Personnel	Request #	Hours	Reporting Location
HC1 IDAHO PANHANDLE		10/1	CHRISTOPHER SMITH	21	C-52	1800-0600	PORTERVILLE CAMP
HC2 PVT SIERRA TORRES 3		10/2	BALDEMAR SIERRA	20	C-3	1800-0600	PORTERVILLE CAMP
HC2 PVT MILLER TIMBER 41		10/2	CHARLES RICHMOND	20	C-41	1800-0600	PORTERVILLE CAMP
HC2 PVT 1ST CHOICE 62		10/4	HELIODORO VERA	20	C-62	1800-0600	PORTERVILLE CAMP
HC2 PVT FRANCO 70		10/8	ISAAC CORIA	20	C-70	1800-0600	PORTERVILLE CAMP
HC2 PVT FRANCO 78		10/10	RODRIGO HERNANDEZ	20	C-78	1800-0600	PORTERVILLE CAMP
<del>HC2 PVT F&amp;F FARM 79</del> → DIV DAY 0		10/7	JAVIER FRANCO	20	C-79	1800-0600	PORTERVILLE CAMP
<del>HC2 PVT TRI-CITIES 80</del> → DIV DAY 0		10/9	MARTIN MORALES	20	C-80	1800-0600	PORTERVILLE CAMP
HC2 PVT PATRICK ENV 82		10/10	LEVI MILLER	20	C-82	1800-0600	PORTERVILLE CAMP
<del>HC2 PVT NORTH PACIFIC 84</del> → DIV DAY 0		10/10	TOMAS GOMEZ	20	C-84	1800-0600	PORTERVILLE CAMP
<del>HC2 PVT BLUE MOUNTAIN 86</del> → DIV DAY 0		10/10	JORGE PEREZ	20	C-86	1800-0600	PORTERVILLE CAMP
ENG1 S/T OES 5813A		9/30	JOE ROSA	21	E-399	0600-0600	PORTERVILLE CAMP
ENG3 INF 322		10/12	JAYSON SMITH	5	E-297	0600-1800	PORTERVILLE CAMP
ENG4 PVT ROCKY MTN 195		10/4	KIMBRELL NUTT	3	E-195	1800-0600	PORTERVILLE CAMP
ENG5 PVT ALTERGOTT 198		10/4	MARCIE MOORE	3	E-198	1800-0600	PORTERVILLE CAMP
ENG6 HYGIENE 2832		9/29	RICH PALESTRO	4	E-201	1800-0600	PORTERVILLE CAMP
TFLD(T) KUHN		10/4	TYLER KUHN	1	O-247	1800-0600	PORTERVILLE CAMP
EMTF ROE (BRANCH RESOURCE)		9/30	JEFF ROE	1	O-144	1800-0600	PORTERVILLE CAMP

**6. Work Assignments:**  
 - Maintain tactical patrol of fire's progression towards Hot Springs, Pine Flat, Sugarloaf and other values at risk in the southern portion of the fire.  
 - Mop-up and patrol to the extent necessary to defend structures within the communities.

**7. Special Instructions:**  
 - Use appropriate suppression tactics based on current and expected fire behavior to protect the values at risk.  
 - Follow all COVID-19 protocols and utilize appropriate PPE and social distancing to enhance personnel safety.  
 - Be advised that the following insurance company resources will be in the Division and are NON-ASSIGNED and NON-FIRE:

8. Communications							
Name	Ch	Function	Rx Freq	Rx Tone	Tx Freq	Tx Tone	Notes
NIFC C12	3	COMMAND	173.0375N	T5 - 146.2	167.3250N	T5 - 146.2	Tobias Peak - South
NIFC SP 2	12	TACTICAL	169.1000N	T5 - 146.2	169.1000N	T5 - 146.2	DIV J/Y-NIGHT J
A/G TAC	14	A/G TAC	167.9875N		167.9875N		ALL DIVISIONS
CALCORD	15	MEDICAL	156.0750N	T6 - 156.7	156.0750N	T6 - 156.7	Medical
GUARD 25	16	AIRGUARD	168.6250N		168.6250N	T1 - 110.9	EMERGENCY
CALCORD	19	MEDICAL	156.0750N	T6 - 156.7	156.0750N	T6 - 156.7	Medical
GUARD 25	20	AIRGUARD	168.6250N		168.6250N	T1 - 110.9	EMERGENCY

**9. Prepared by: Name:** Harry Kelmanson, Ryan Resnick, Kelly Smyth(t), Robert Villa(t)                      RESL                      Signature:                     KF                     

ICS 204                      Date/Time: 9/28/2021                      2200                      Personnel Count: 259









# ICS 205 - INCIDENT RADIO COMMUNICATIONS PLAN

<b>1. Incident Name:</b> WINDY FIRE Incident Channels		<b>2. Date/Time Prepared</b> Date: 09/28/2021 Time: 1930		<b>3. Operational Period:</b> Date From: 09/29/21 Time From: 0600		Date To: 09/30/21 Time To: 0600	
---	--	--	--	---	--	------------------------------------	--

4. Communications								
Ch#	Function	Name	Assigned To	Rx Freq	Rx Tone	Tx Freq	Tx Tone	Notes
1	COMMAND	NIFC C1	COMMAND	170.9750N	T5 - 146.2	168.7000N	T5 - 146.2	Jordan - North
2	COMMAND	NIFC C9	COMMAND	170.0125N	T5 - 146.2	165.2500N	T5 - 146.2	Mule Peak - Central
3	COMMAND	NIFC C12	COMMAND	173.0375N	T5 - 146.2	167.3250N	T5 - 146.2	Tobias Peak - South
4	COMMAND	NIFC C28	COMMAND	170.0750N	T5 - 146.2	164.0125N	T5 - 146.2	Baker Peak Lookout - East
5	COMMAND	NIFCC130	COMMAND	172.4375N	T5 - 146.2	169.2875N	T5 - 146.2	UNASSIGNED
6	TACTICAL	NIFC T1	TACTICAL	168.0500N	T5 - 146.2	168.0500N	T5 - 146.2	DIV A/K-NIGHT A
7	TACTICAL	NIFC T3	TACTICAL	168.6000N	T5 - 146.2	168.6000N	T5 - 146.2	DIV C
8	TACTICAL	NIFC T5	TACTICAL	166.7250N	T5 - 146.2	166.7250N	T5 - 146.2	DIV E-NIGHT C/E
9	TACTICAL	NIFC T6	TACTICAL	166.7750N	T5 - 146.2	166.7750N	T5 - 146.2	DIV O
10	TACTICAL	NIFC T7	TACTICAL	168.2500N	T5 - 146.2	168.2500N	T5 - 146.2	DIV L/EAST CONTINGENCY
11	TACTICAL	NIFC SP 1	TACTICAL	166.6000N	T5 - 146.2	166.6000N	T5 - 146.2	DIV P/R
12	TACTICAL	NIFC SP 2	TACTICAL	169.1000N	T5 - 146.2	169.1000N	T5 - 146.2	DIV J/Y-NIGHT J
13	A/G CMD	A/G CMD	A/G CMD	166.6125N		166.6125N		ALL DIVISIONS
14	A/G TAC	A/G TAC	A/G TAC	167.9875N		167.9875N		ALL DIVISIONS
15	MEDICAL	CALCORD	MEDICAL	156.0750N	T6 - 156.7	156.0750N	T6 - 156.7	Medical
16	AIRGUARD	GUARD 25	AIRGUARD	168.6250N		168.6250N	T1 - 110.9	EMERGENCY
17								
18								
19	MEDICAL	CALCORD	ALL DIVS	156.0750N	T6 - 156.7	156.0750N	T6 - 156.7	Medical
20	AIRGUARD	GUARD 25	ALL DIVS	168.6250N		168.6250N	T1 - 110.9	EMERGENCY

**5. Special Instructions**

WINDY COMMUNICATIONS: (213) 503-4322

**6. Prepared by (Communications Unit Leader):** Name: Ken Earle  
 Signature: Ken Earle  
 Date/Time: 09/28/21 1930

# ICS 205 - INCIDENT RADIO COMMUNICATIONS PLAN

CONTROLLED UNCLASSIFIED INFORMATION/BASIC

<b>1. Incident Name:</b> WINDY FIRE IA GROUP	<b>2. Date/Time Prepared</b> Date: 09/28/2021 Time: 1930	<b>3. Operational Period:</b> Date To: 09/30/21 Time To: 0600
--	--	---

4. Communications									
Ch#	Function	Name	Assigned To	Rx Freq	Rx Tone	Tx Freq	Tx Tone	Notes	
1	COMMAND	SQF CH 4	IA CMND	170.5500N		166.0000N	OST	TONE - 8, 9, 10	
2	IA COMMAND	TUU LOC	IA CMND	151.1900N	110.9	159.2250N	OST	TONE - 14, 15	
3	TACTICAL	NIFC T2	IA TACTICAL	168.2000N		168.2000N		IA TACTICAL	
4	IA TACTICAL	CAL T5	IA TACTICAL	151.2500N	T16 - 192.8	151.2500N	T16 - 192.8	IA TACTICAL	
5	IA TACTICAL	CAL T8	IA TACTICAL	151.3700N	T16 - 192.8	151.3700N	T16 - 192.8	IA TACTICAL	
6		BLANK							
7		BLANK							
8		BLANK							
9		BLANK							
10		BLANK							
11		BLANK							
12	CALFIRE AIR TO GROUND	CAA/G 2		159.2625N	T16 - 192.8	159.2625N	T16 - 192.8		
13	FED AIR TO GROUND	FS A/G41	IA A/G	167.4750N		167.4750N		PRIMARY IA A/G	
14	FED AIR TO GROUND	FS A/G24	IA A/G	168.6375N		168.6375N		SECONDARY IA A/G	
15	MEDICAL	CALCORD	MEDICAL	156.0750N	T6 - 156.7	156.0750N	T6 - 156.7	MEDICAL	
16	AIRGUARD	GUARD 25	EMERGENCY	168.6250N		168.6250N	T1 - 110.9	AIRGUARD	
17									
18									
19	MEDICAL	CALCORD	ALL DIVS	156.0750N	T6 - 156.7	156.0750N	T6 - 156.7	MEDICAL	
20	AIRGUARD	GUARD 25	EMERGENCY	168.6250N		168.6250N	T1 - 110.9	AIRGUARD	

**5. Special Instructions**  
 FOR CHANNEL 1 TONE 8=103.5 TONE 9=100.0 TONE 10=107.2      FOR CHANNEL 2 TONE 14=151.4 TONE 15=162.2

**6. Prepared by (Communications Unit Leader):** Name: Ken Earle  
 Signature: Ken Earle  
 Date/Time: 09/28/21 1930  
 NIMS IAP



# AIR OPERATIONS SUMMARY

PREPARED BY: John Keesee 

PREPARED DATE/TIME: 09/28/2021 1900

1. INCIDENT NAME: WINDY

2. OPERATIONAL PERIOD DATE: 09/29/2021 SUNRISE: 06:48 SUNSET: 18:43

### 3. REMARKS (Safety Notes, Hazards, Air Operations Special Equipment, etc.):

1. Assess mission complexity and the Benefit vs Risk of the mission.
2. Ensure visibility and winds are adequate to safely conduct flight operations.
3. Ensure safe vertical & horizontal separation between aircraft especially in smoky conditions.
4. Utilize check points and call in and out of the dips.
5. If you see a UAS on your division report it up the chain of command.
6. Smoky conditions can hamper our aviation operations. Adhere to visibility limitations, and DO NOT be pressured into accepting a mission that you know, or feel is unsafe!
7. Helibase COVID-19 BMP, Manager/Pilots/Crewmembers maintain adequate separation for briefing with mask
8. Powerline safety, hazard maps make then known.

### 4. MEDEVAC A/C:

Review medivac  
8 line with all crewmembers

Review:  
MISHAP GUIDE

5. TFR: 1/3109 ZLA (A-214)  
TFR; 1/3128 ZOA (A-213)  
TFR freq: 119.075

Altitude: 13,000 MSL

<http://tfr.faa.gov/tfr2/list.html>

### 6. PERSONNEL

PERSONNEL	Phone	7. FREQUENCIES			8. FIXED-WING		# Avail / Type/ Make-Model / FAA N /Base(s)
		AIR/AIR FW:	AM	FM	ATGS Aircraft		
AOBD: JOHN KEESEE AOBD(t): SARAH CULHANE	805-551-6422 505-206-7665		119.075 TFR				By Request: N54163 @ Porterville (PTV) N844CH @ Porterville (PTV) N690RA @ Santa Maria (SMX)
ASGS: RAY UCHA ASGS(t) COLE WALLACE ASGS(t) KEITH HASKINS	951-903-4136 907-204-1444 850-408-2678	AIR/AIR RW BRIEFING:	126.6750 121.8250	169.2000			PORTERVILLE AIR ATTACK BASE: 559-789-0190
PORTERVILLE HELIBASE HEBM: CINDY BRADLEY HEBM(t): LYNN CORREN	559-916-9355 760-417-1220	AIR/GROUND: Command		166.6125			CALL SIGN: Medivac w/Hoist: KERN CO. H407 TYPE 2 AIRCRAFT Available 24 hours out of Visalia, CA
KERNVILLE HELIBASE HEBM: DAVID CARRERA HEBM (t) GEOFF GILLESPIE	760-883-9110	AIR/GROUND: Tactical		167.9875			See medical plan.
ATGS: SKYLER DALTON @ PTV ATGS: GREG HAXBY @ PTV	435-592-5476 208-709-2459	RAMP PTV	128.525		Other:		TULE MRB 36 02.8935 118 45.2440 ANDREW O'BRIEN 239-848-7504
ATGS: ALEX IHLE AA-07 @ SMX	805-364-1002	DECK FREQ:		163.6125 *			FAIRVIEW MRB 35 54.478 118 28.825 LINDSEY MOBILE RETARDANT
UASP: Joe Don Morton UAS Type 3 FA3YEH9TTE UR33	907-388-1050	CALCORD		156.0750 TONE 6 - 156.7			FAA TOWER at Porterville Airport  *New DECK Freq 09/29/21

### 9. HELICOPTERS


--	--	--	--	--	--	--	--

FAA N#	TY	MAKE/MODEL	BASE	AVAIL	START	REMARKS
620TJ	1	BLACK HAWK (A-4)	PTV	0800	0830	BUCKET
2FH	1	BLACK HAWK (A-142)	PTV	0800	0830	BUCKET
889AB	1	BLACK HAWK (A-143)	PTV	0800	0830	BUCKET
72OHT	1	CH54 (A-52)	PTV	0800	0830	TANK
718HT	1	CH54 (A-53)	PTV	0800	0830	TANK
795HT	1	CH54 (A-57)	PTV	0800	0830	BUCKET
NCF-PUK	1	SUPER PUMA (A-257)	@ VISALIA	0800	0830	BUCKET
699RH	1	K-MAX (A-185)	PTV	0800	0830	BUCKET
161KA	1	K-MAX (A-186)	PTV	0800	0830	BUCKET
526MW	1	K-MAX (A-232)	PTV	0800	0830	BUCKET
H-534	2	205A1 ++ (A-68)	PTV	0800	0830	BUCKET
H-522	2	205A1 ++ (A-69)	PTV	0800	0830	BUCKET
H-525	3	A Star B3 (A-71)	PTV	0800	0830	BUCKET
351FW	3	A Star B2 (A-230)	PTV	0800	0830	BUCKET
319WA	1	K-MAX (A-141)	KRNVIL	0800	0830	BUCKET
66HJ	2	205++ (A-54)	KRNVIL	0800	0830	BUCKET
523	2	205++ (A-131)	KRNVIL	0800	0830	BUCKET



**INCIDENT RISK ANALYSIS**

**ICS (215A) DAY/NIGHT SHIFT**

BR/DV	HAZARDOUS ACTIONS – CONDITIONS	MITIGATIONS – WARNINGS – REMEDIES
ALL	TRAFFIC HAZARDS AND DRIVING	<ul style="list-style-type: none"> <li>• Many roads are narrow and mid-slope, with soft shoulders. Allow heavy vehicles to pass on uphill side. Use spotters when backing or turning around.</li> <li>• Practice "Defensive Driving" techniques. Assume other drivers are fatigued and complacent.</li> <li>• Use warning lights when working on roads or traveling in smoke.</li> <li>• Drive at or below posted speed limits.</li> <li>• Use chock blocks, turn wheels into hill.</li> <li>• Be alert for wildlife. Dusk to Dawn pose the greatest potential for accidents.</li> </ul>
ALL	HAZARD / DANGER TREES	<ul style="list-style-type: none"> <li>• Follow Hazard Tree Safety Guidelines (IRPG p.22.)</li> <li>• Limit number of personnel around snags and their exposure time</li> <li>• Fallers must be qualified for the trees being felled.</li> <li>• Be alert around hazard trees during wind events, even green trees.</li> <li>• The hazard zone extends a minimum of 2½ tree lengths.</li> <li>• Avoid parking vehicles or taking breaks under or near hazard trees.</li> </ul>
ALL	FIRE BEHAVIOR	<ul style="list-style-type: none"> <li>• Are you seeing what we have predicted?</li> <li>• Conduct thorough assessments before starting work.</li> <li>• Ensure LCES is in place</li> <li>• Plan &amp; communicate your exit strategy with your crew and adjacent resources.</li> <li>• Provide additional briefing for new resources and maintain communications.</li> <li>• Outflow winds from thunderstorms could negatively affect fire behavior.</li> </ul>
ALL	STEEP TERRAIN & ROLLING DEBRIS	<ul style="list-style-type: none"> <li>• Maintain 8'-10' spacing when working &amp; walking.</li> <li>• Do not work above any personnel.</li> <li>• Evaluate necessity to send personnel in areas with limited access.</li> </ul>
ALL	WILDLAND URBAN INTERFACE OPERATIONS	<ul style="list-style-type: none"> <li>• Maintain continuous Situational Awareness based upon the fire environment, observed fire behavior, hazards and incident objectives.</li> <li>• Refer to IRPG Page 12-16 for WUI preparation, preplanning, and hazards.</li> <li>• Be active and engage in defense preparations &amp; do not wait for the fire to arrive.</li> <li>• Beware of unknown chemicals when working near structures or garden plots.</li> <li>• Be decisive in tactical engagement. Know when to engage or not.</li> <li>• Establish management decision points, Safety Zones, TRA's, and Escape Routes.</li> </ul>
ALL	FIRING OPERATIONS	<ul style="list-style-type: none"> <li>• Only personnel trained in the use of each device will be authorized to use firing equipment.</li> <li>• Ensure that all personnel are briefed and prepared for firing and holding operations.</li> <li>• Ensure that all ground and Ariel ignition plans are approved and signed by the IC prior to implementation</li> </ul>
ALL	COMMUNICATIONS	<ul style="list-style-type: none"> <li>• Share your Situational Awareness (hazards, changes, etc.) to those who also have a need.</li> <li>• Answer questions when asked by others. Ask for intel when you do not know the plan.</li> <li>• Ensure all personnel are familiar with the incident and IA communications plans.</li> </ul>
ALL	HEAT RELATED ILLNESS	<ul style="list-style-type: none"> <li>• Drink 2 to 1 water to sports drinks.</li> <li>• Take frequent breaks, minimum of 10 minutes every hour.</li> <li>• Recognize symptoms of HEAT RELATED ILLNESS which include low energy, cramping, headaches, dizziness, poor rest, poor eating habits, hot skin, and lack of sweating.</li> </ul>
ALL	INDIRECT LINE CONSTRUCTION	<ul style="list-style-type: none"> <li>• Establish and maintain LCES.</li> <li>• Locate line in favorable location, lighter fuels, and gentler topography when possible.</li> <li>• Utilize natural or existing barriers.</li> </ul>
ALL	AIR OPERATIONS	<ul style="list-style-type: none"> <li>• Follow "Aviation Watch-Out Situations" on page 46, IRPG.</li> <li>• Do not plan on air resources for tactical support or medical transportation.</li> <li>• Refer to page 58, IRPG for directing bucket drops.</li> <li>• Ensure positive communication with all air resources.</li> </ul>
<p><b>INCIDENT NAME:</b></p> <p><b>Windy Fire</b></p>		<p><b>OPERATIONAL PERIOD:</b></p> <p><b>0600 – 0600</b></p> <p><b>Sept 29-30, 2021</b></p> <p>Date/Time Prepared: 09/28/2021 – 1400 hrs</p> 



## **Covid Response**

### **Help stop the spread of COVID-19**

**DO YOU HAVE ANY OF THESE SYMPTOMS?**

**Fever, Chills, Cough, Shortness of Breath, Muscle Pain, Sore Throat or Loss of Taste or Smell, Positive test for COVID 19?**

### **DO NOT ENTER THE ICP OR CAMPS**

**If in doubt about any of these symptoms, consult Windy Medical between 0700 and 2200 at 518-832-0505**

- Employee notifies supervisor of presumed or confirmed COVID-19 Symptoms
- Affected employee advised to seek evaluation by Incident Medical Unit
- Medical Unit will evaluate and determine need for evaluation and care.
- Close contact assessment and isolation as necessary. Decontamination of workspace/vehicle as necessary.
- IMT will notify and coordinate with COVID Advisor, Home Unit Agency Representative and Public Health Department.

### **Windy COVID Advisors:**

**Mike Pasillas- USDA Forest Service**

**559-920-8061**

**Adam Cochran-USDI**

**(BIA, BLM, FWS, NPS)**

**775-455-6832**



# WILDLAND FIRE COVID-19 SCREENING TOOL

Today or in the past 24 hours, have you had any of the following symptoms<sup>1</sup>?

<b>Symptom</b>
Cough more than expected?
Shortness of breath or difficulty breathing?
Fever? Chills?
Muscle pain, outside your normal for firefighting?
Sore throat?
New loss of taste or smell?
Fatigue, outside your normal for firefighting?
Headache, outside your normal for firefighting?
Congestion or runny nose, outside your normal for firefighting?
Nausea or vomiting
Diarrhea
<i>* Take temperature with no-touch thermometer, if available *</i>

## Instructions for Screening

Item	What to Do
If resource has a cough that is more than expected, shortness of breath or difficulty breathing, or any other symptoms listed.	DO NOT MOBILIZE
At Entries: Consider adequate number of personnel needed for screening. Although medical personnel are ideal, screeners do not have to be medically trained. If resource has cough, shortness of breath or difficulty breathing, or any other listed symptoms including fever (over 100.4) at entry.	DO NOT ANNOUNCE Ask individual to step aside and follow the steps below.

## Steps to follow

- |  |
|--|
| Escort symptomatic individual to isolation area.   |
| Isolation support personnel should begin documentation.  |
| Have symptomatic individual contact Supervisor for further direction.  |
| Notify public health officials.  |
| Have individual transported as appropriate.  |
| Protect and secure any collected Personal Identifiable Information (PII) or Personal Health Information (PHI). |

<sup>1</sup> Symptoms of Coronavirus

<https://www.cdc.gov/coronavirus/2019-ncov/symptoms-testing/symptoms.html>





**COMP / CLAIMS:**

**Elaine Downing COMP Unit Leader 928-486-5295 Elaine\_Downing@firenet.gov**

For federal employees, if you are injured, please contact the COMP UL for the Authorization for Treatment (CA-16). We can issue the form directly to the hospital or clinic, but we need full names and SSN for the required forms prior to being able to do that. The employee or supervisor should contact COMP/CLAIMS as soon as possible or upon arrival at the hospital, whichever is convenient.

For claims there are different forms needed based on the circumstances of the property loss or damage. Please contact COMP UL first to find out which forms are appropriate for your situation, and what additional information might be needed. This will expedite the process.

Unserviceable items must be turned into COMP if you are unable to replace at Supply. If items are lost or damaged on the fire line, the fire suppression module must provide a copy of the module's standard inventory with the documentation of broken or unserviceable items. For replacement of non-cache items, if the replacement request is approved, the reimbursement amount will be limited to the cache equivalent value. (PMS 902 Chapter 30).

Replacement for normal wear and tear will be through your home unit.

<b>Motor Vehicle Accident</b>	<b>Property Loss or Damage of items that cannot be replaced in Supply</b>
<i>SF-91, Motor Vehicle Accident SF-94 Witness Statement (if app)</i>	<i>TEAM 5 MODIFIED 289</i>



## Human Resource Message

# GRATITUDE

Gratitude is defined as the quality of being thankful; readiness to show appreciation for and to return kindness. Understanding it has been a very emotionally and physically taxing year, it is easy to allow negativity to take the wheel and drive our reactions. Remembering that we have a choice about how we allow things that are out of our control to affect us is important.

Being grateful is more fulfilling. We are grateful for your dedication and hard work on this assignment, all the ones before this and the ones to come. We are grateful for your ability to adapt to the ever-changing environments. We are grateful for the skill sets and positive attitude each of you brings to help accomplish this mission. We are grateful for your continued perseverance every day when you show up and overcome the complexities of the day. Thank you for being here together!

John F. Kennedy said, "As we express our gratitude, we must never forget that the highest appreciation is not to utter words, but to LIVE by them."

*Gratitude*  
IS THE BEST  
*attitude*

Andrea Cabida- HRSP- 707-330-9939; [andrea.cabida@usda.gov](mailto:andrea.cabida@usda.gov); Call, text or email me.





# Public Information

**General Information Line: (559)214-1260**

**Media Information Line: (213) 503-4243**

**Email: [2021.windy@firenet.gov](mailto:2021.windy@firenet.gov)**

**Facebook: @SequoiaNF**

## Lost and Found

**Please Call PIO (213) 503-4243**

## Outgoing Mail

**PIO-Porterville Fairgrounds Expo Building**

**Post Cards are available**

## Fire Videos and Photos Needed

**Proper PPE must be worn in all photos. Hold camera horizontal for best video.  
Scan the QR Code below for information on where to send photos and videos**

**SCAN ME**



# Resource Advisors Message

**Giant sequoias** are among the world's largest and longest-living trees, reaching 2,500-3,000 years old. They grow naturally **only** on California's Sierra Nevada mountain range. They are fire-adapted and have survived low intensity fires every 10-15 years which remove fallen branches, leaves, logs and other fuels while promoting seed germination. Historically, fires have rarely killed mature giant sequoias. However, **we now know they are vulnerable to high severity fire.**

**AT LEAST 10% of the world's giant sequoias were lost during the Castle Fire last year.**



**THANK YOU FOR PROTECTING THE GIANT SEQUOIA GROVES!**

**Use these BMP's to help protect the big trees:**

- Think of protecting old growth sequoias like a structure.
- Remove surface and ladder fuels from under sequoias. Remove non-sequoia conifers up to 16" diameter. Scatter or chip fuel away from sequoias.
- Scrape duff and fuel from around sequoias, prioritize clearing out cat faces and old fire scars.

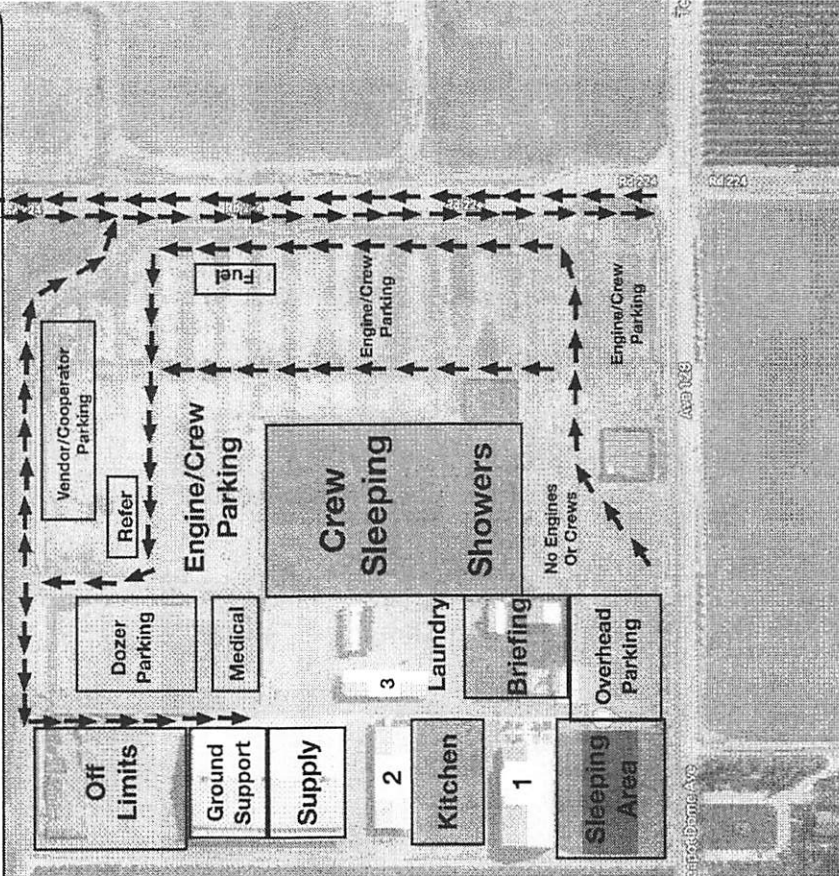
**Protecting the Sequoia Groves is the #1 Resource Priority**



# Porterville Fairgrounds Camp Map

2700 W. Teapot Dome Ave.  
Porterville, CA 93257

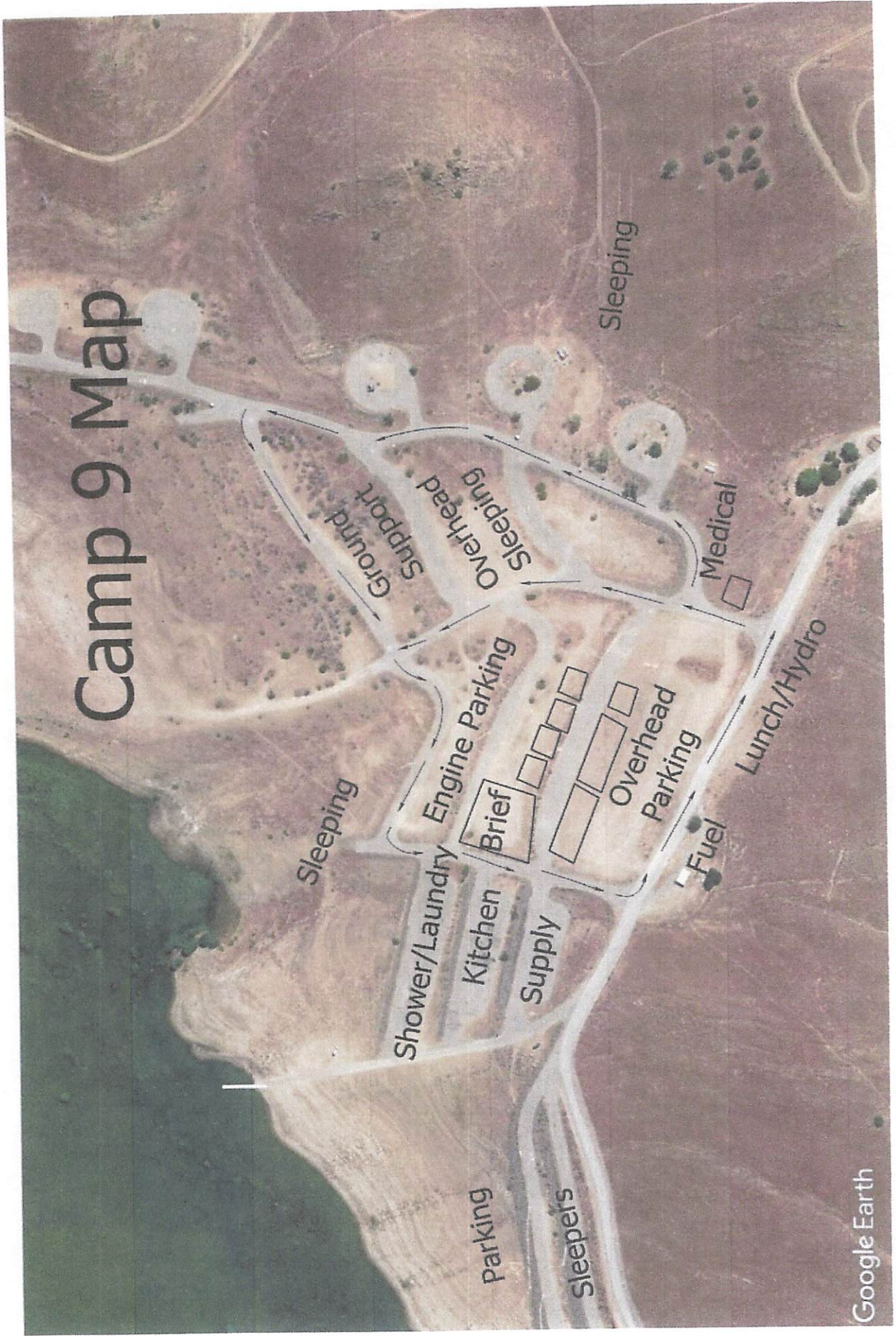
Sleep  
Trailers/  
Tent  
Camping



1. Administration
2. Logistics/Food
3. Facilities/Comms



# Camp 9 Map





## ***Windy Fire-Incident Training Program***

A TNSP is available on this incident to assist with your training assignment needs and documentation.

To receive documented incident credit for your assignment, scan the QR Code or click on the link below to access and complete the Trainee Registration Form. Once registered you will receive additional instructions via text.

Registering your training assignment as early as possible on the incident is to your benefit!

For training related questions, call: Brad Smith (TNSP) at 209-770-4809 or email [bradley\\_smith@firenet.gov](mailto:bradley_smith@firenet.gov)

[Windy Fire - Incident Training Program Registration](#)



# Windy Fire Demob Unit

## Demob Day Approaching?

As your demob day approaches pay attention to the IAP Demob Schedule.  
Alert DMOB if there are issues. We can only fix things we know about.  
949-591-4133

- **Contact FINANCE 24 hours prior** to give them a heads-up you are departing:
  - Phone:** 949-591-4131 or 949-591-4149 (Finance Information phone only)
  - Turn in any outstanding or travel CTRs/Shift Tickets. Make sure they're SIGNED.
  - Confirm no missing financial documentation. See Finance Page for full information.

---

## Need AIR TRAVEL to get home?

**IF YOUR RETURN METHOD OF TRAVEL IS BY AIR, CONTACT DMOB 72-HOURS AHEAD  
OF YOUR LAST WORK DAY. AIR TRAVEL PHONE: 608-797-6554**

---

---

## Extensions and Crew Swaps

Questions call 949-591-4144

### Extensions

1. Obtain form from Check-in/Demob station in the Expo building.
2. Fill out the top section.
3. Take it to your DIVS for approval signature.
4. Get your Home Unit Supervisor's approval signature.
  - a. If your home unit supervisor isn't available to sign, write "approved by phone" and include the phone number.
5. If taking R&R, include the R&R dates and the Return date.
6. Return the completed form to Check-in/Demob station where you picked it up.

### Crew Swaps

1. Include the names and phone number of crew members.
2. Include the date and length of the swap.
3. Get your DIVS signature.
4. Return it to the Check-in/Demob station.



# Windy Fire Demob Instructions

## On your Day of Demob - **STEP 1:**

**Contact DMOB: 949-591-4133 or 608-797-6554** to activate your virtual Check-Out Sheet.

The DMOB can answer your questions about the process and pass on any updates.

**You will not be able to proceed if you have not talked to the DMOB.**

If this call is not made, any steps below you may think you have completed are, in fact, void.

## **STEP 2:**

**SUPPLY** – see in-person to return issued gear and left over supplies.

If you have nothing to turn in, Demob will contact supply and clear you.

**COMMUNICATIONS** – see in-person to return in any commo gear (Radios, etc.)

If nothing to turn in, Demob will make contact and clear you.

**GROUND SUPPORT** – see in-person to return pool NERV Rentals, get an inspection, etc.

Be sure to take a picture of ground support paperwork and text it to **Demob - 949-591-4133**.

If you have no business with GS, Demob will clear you. **Ground Support – 949-591-4143**

Other Considerations:

If you are a Trainer or a Trainee, make sure you have closed out with the Training Specialist.

Turn in any Unit Logs and Evaluations to at the Check-in table.

## **STEP 3:**

**Contact FINANCE** to finalize your paperwork in person at the Porterville Finance table or by phone.

Over the phone – leave your Name, RO #, Phone # & email

They will call you when your timesheets are ready to sign

Please Call: **949-591-4149** or **949-591-4125**

***Receive your signed OF-288 or OF-286 BEFORE starting travel.***

## **STEP 4:**

**Contact DMOB at 949-591-4133 or 608-797-6554** DMOB will verify check-out completion.

Be prepared to talk about your actual departure date and time, your anticipated arrival date and time,

And where you will be staying if travel includes overnight stops away from fire camp.

**You must complete all four steps to be released in IROC.**

**Use the QR code on the front cover of the IAP to get the latest edition of these instructions.** Ver 9/25



# Windy Fire Demob Schedule

## Only You can prevent Demobilization



FREE OFFER – Get your Extension or Crew Swap set up TODAY

Call the Check-In shop – 949-591-4144

REQ#	KIND	NAME	DEMOB CITY	ST	TRVL METH	DMOB DATE	DPART TIME
E-101	CHIP	MISC - CHIPPER, T1 - TREE GUYS, THE -	LAKE ARROWHEAD	CA	POV	09/29	06:30
E-126	WTS2	TENDER, WATER (SUPPORT) - T2 - 49ER	ANGELS CAMP	CA	POV	09/29	06:40
E-129	ENG3	VULCAN 22	GILBERT	AZ	POV	09/29	06:50
E-133	ENG6	ENGINE - T6 - LOOMIS FIRE CONTROL, LLC - LOOMIS 46	PRESCOTT	AZ	AOV	09/29	07:00
E-134	ENG3	ENGINE 375	FRAIZER PARK	CA	AOV	09/29	07:10
E-138	ENG3	ENGINE - T3 - SNF 52	NORTH FOLK	CA	AOV	09/29	07:20
O-35	SEC1	BARRON, ERIC M	PAPILLION	NE	AIR	09/29	07:30
O-62	FMOD	FALLER MODULE - AMERICAN INDIAN MARTINA TREE SERVICE,	GRASS VALLEY	CA	POV	09/29	07:40
O-100	SOFR	HARKER, DANIEL EDWARD	LOMA LINDA	CA	AOV	09/29	07:50
O-119	DIVS	FARRELL, ROBERT A	SALT LAKE CITY	UT	AOV	09/29	05:45
O-257	HMGB	YEAMANS, LUCAS	SALT LAKE CITY	UT	REN	09/29	08:00

**\*CALL DEMOB AT SCHEDULED TIME 949-591-4133\***

## LINE ORDER FORM

ORDER #	DATE & TIME ORDERED Received from the Line	WHO PLACED ORDER DIVS, OPS, etc...	DELIVER to (DIV, Helispot, DP, etc.) Division, Hel-Spot, Drop Point, etc.	MODE of DELIVERY Drive, Helo, pick-up			
<b>Order Received in Communications By:</b>				<b>TIME:</b>			
<b>Communications Relayed/Placed the Order To:</b>				<b>TIME:</b>			
<b>Order Shipped to the Line By (Name):</b>				<b>TIME:</b>			
ITEM#	DESCRIPTION			AMOUNT			
1	<b>1,000 Foot Hose Lay:</b> Includes the following 10 lengths, 1 1/2" x 100' Hose. 10 lengths, 1" x 100' Hose. 10ea. 1 1/2" Gated Wyes. 10ea. 1 1/2" to 1" Reducers. 10ea. 1" Nozzles.						
2	<b>2,000 Foot Hose Lay:</b> Includes the following 20 lengths, 1 1/2" x 100' Hose. 20 lengths, 1" x 100' Hose. 20ea. 1 1/2" Gated Wyes. 20ea. 1 1/2" to 1" Reducers. 20ea. 1" Nozzles.						
3	<b>3,000 Foot Hose Lay:</b> Includes the following 30 lengths, 1 1/2" x 100' Hose. 30 lengths, 1" x 100' Hose. 30ea. 1 1/2" Gated Wyes. 30ea. 1 1/2" to 1" Reducers. 30ea. 1" Nozzles.						
ITEM#	REQUESTED ITEM	NFES#	AMOUNT	ITEM#	REQUESTED ITEM	NFES#	AMOUNT
4	Backpack Pump, 5 gallon	1149		26	Batteries, "AA" (package)	0030	
5	Foam, 5 gallon	1145		27	Gasoline, Unleaded (gallon)		
6	Hose, 3/4 inch, 50 ft. length	1016		28	Oil, 2 Cycle Mix (quart)	0341	
7	Hose, 1 inch, 100 ft. length	0966		29	Diesel, straight (gallon)		
8	Hose, 1 1/2 inch, 100 ft. length	0967		30	Oil, Bar & Chain (gallon)	1880	
9	Increaser, 3/4" to 1"	2235		31	Fusees (box)	0105	
10	Increaser, 1" to 1 1/2"	0416		32	Torch, Drip Torch ea.	0241	
11	Nozzle, Garden 3/4 inch	0136		33	Mix, Drip Torch 3-1, 5 gal.		
12	Nozzle, Forester, 1"	0024		34	Flagging, Ribbon, Color/Roll		
13	Nozzle, KK Type, 1"	1081		35	Washcloth, Waterless	0206	
14	Nozzle, KK Type, 1 1/2"	1082		36	Water, Cubi, 5 gallon ea.	0048	
15	Reducer, 1" to 3/4"	0733		37	Water, Bottled, (case)		
16	Reducer, 1 1/2" to 1"	0009		38	Sports Drink, Gatorade (case)		
17	Tee, Hoseline, 1"x1"x 3/4"	1809		39	Food, MRE's (12 per Box)	1842	
18	Tee, Hoseline, 1"x1"x 1"	2240		40	Pump Kit, High Pressure	0870	
19	Tee, Hoseline, 1 1/2" x 1 1/2" x 1"	0230		41	Pump, High Pressure	0148	
20	Wye, Gated, 3/4" inch	0904		42	Pump Kit, Light Weight	0670	
21	Wye, Gated, 1"	0259		43	Sprinkler Kit	1048	
22	Wye, Gated, 1 1/2"	0231		44	Pump Kit, Volume	6041	
23	Tank, Collapsible. Capacity Gallons?			45	Mop-Up Kit	0772	
24	Tank, Folding/Frame. Capacity ??						
25	Wrap, Structure (roll)	0881					

Date and Time Needed: \_\_\_\_\_ Point of Contact at Delivery Location: \_\_\_\_\_

**OTHER / NOTES:**



## LINE ORDER FORM

ORDER #	DATE & TIME ORDERED Received from the Line	WHO PLACED ORDER DIVS, OPS, etc...	DELIVER to (DIV, Helispot, DP, etc.) Division, Heli-Spot, Drop Point, etc.	MODE of DEVIVERY Drive, Helo, pick-up			
<b>Order Received in Communications By:</b>				<u>TIME:</u>			
<b>Communications Relayed/Placed the Order To:</b>				<u>TIME:</u>			
<b>Order Shipped to the Line By (Name):</b>				<u>TIME:</u>			
ITEM#	DESCRIPTION			AMOUNT			
1	<b>1,000 Foot Hose Lay:</b> Includes the following 10 lengths, 1 1/2" x 100' Hose. 10 lengths, 1" x 100' Hose. 10ea. 1 1/2" Gated Wyes. 10ea. 1 1/2" to 1" Reducers. 10ea. 1" Nozzles.						
2	<b>2,000 Foot Hose Lay:</b> Includes the following 20 lengths, 1 1/2" x 100' Hose. 20 lengths, 1" x 100' Hose. 20ea. 1 1/2" Gated Wyes. 20ea. 1 1/2" to 1" Reducers. 20ea. 1" Nozzles.						
3	<b>3,000 Foot Hose Lay:</b> Includes the following 30 lengths, 1 1/2" x 100' Hose. 30 lengths, 1" x 100' Hose. 30ea. 1 1/2" Gated Wyes. 30ea. 1 1/2" to 1" Reducers. 30ea. 1" Nozzles.						
ITEM#	REQUESTED ITEM	NFES#	AMOUNT	ITEM#	REQUESTED ITEM	NFES#	AMOUNT
4	Backpack Pump, 5 gallon	1149		26	Batteries, "AA", (package)	0030	
5	Foam, 5 gallon	1145		27	Gasoline, Unleaded (gallon)		
6	Hose, 3/4 inch, 50 ft. length	1016		28	Oil, 2 Cycle Mix (quart)	0341	
7	Hose, 1 inch, 100 ft. length	0966		29	Diesel, straight (gallon)		
8	Hose, 1 1/2 inch, 100 ft. length	0967		30	Oil, Bar & Chain (gallon)	1880	
9	Increaser, 3/4" to 1"	2235		31	Fusees (box)	0105	
10	Increaser, 1" to 1 1/2"	0416		32	Torch, Drip Torch ea.	0241	
11	Nozzle, Garden 3/4 inch	0136		33	Mix, Drip Torch 3-1, 5 gal.		
12	Nozzle, Forester, 1"	0024		34	Flagging, Ribbon, Color/Roll		
13	Nozzle, KK Type, 1"	1081		35	Washcloth, Waterless	0206	
14	Nozzle, KK Type, 1 1/2"	1082		36	Water, Cubi, 5 gallon ea.	0048	
15	Reducer, 1" to 3/4"	0733		37	Water, Bottled, (case)		
16	Reducer, 1 1/2" to 1"	0009		38	Sports Drink, Gatorade (case)		
17	Tee, Hoseline, 1"x1"x 3/4"	1809		39	Food, MRE's (12 per Box)	1842	
18	Tee, Hoseline, 1"x1"x 1"	2240		40	Pump Kit, High Pressure	0870	
19	Tee, Hoseline, 1 1/2" x 1 1/2" x 1"	0230		41	Pump, High Pressure	0148	
20	Wye, Gated, 3/4" inch	0904		42	Pump Kit, Light Weight	0670	
21	Wye, Gated, 1"	0259		43	Sprinkler Kit	1048	
22	Wye, Gated, 1 1/2"	0231		44	Pump Kit, Volume	6041	
23	Tank, Collapsible. Capacity Gallons?			45	Mop-Up Kit	0772	
24	Tank, Folding/Frams. Capacity ??						
25	Wrap, Structure (roll)	0881					

Date and Time Needed: \_\_\_\_\_ Point of Contact at Delivery Location: \_\_\_\_\_

**OTHER / NOTES:**







5. INCIDENT MEDICAL AID STATIONS			
MEDICAL AID STATIONS	LOCATION	ALS	
		YES	NO
Emergency Response Logistics	Porterville Fairgrounds 2700 Teapot Dome Ave., Porterville, CA 93257	XX	
Emergency Response Logistics	Camp 9 857 Sierra Way Kernville, CA	XX	

6. TRANSPORTATION				
A. Ambulance Services				
NAME	LOCATION	PHONE	ALS	
			YES	NO
Imperial Ambulance 877 (0600-1800)	Hot Springs/ Tyler Creek FS	559-687-3048	XX	
Imperial Ambulance 878 (1800-0600)	Hot Springs/ Tyler Creek FS	559-687-3048	XX	
Liberty Rescue 2 (0600-1800)	Ponderosa/ Camp Nelson		XX	
Idyllwild Ambulance (1800-0600)	Ponderosa/ Camp Nelson		XX	
Imperial Ambulance (911 System)	Tulare County	559-687-3048	XX	
Tule River Ambulance 891 (911 System)	Tule River Reservation	559-687-3048	XX	

B. AIR AMBULANCE					
NAME	LOCATION	PHONE	ALS		BLS
			YES	NO	
Kern County FD H407	Visalia - 24 hr, Hoist, NVG (ETA 20-30 Min)	661-324-6551	XX		
CHP	Bakersfield - Day Hoist Only (ETA 30 Min)	559-550-8100	XX		
US Coast Guard	Lemore - 24 hr, Hoist, NVG (ETA 60-90 Min)	510-437-3701	XX		
Air SkyLife H3	Visalia - 24 hr, NVG (ETA 20-30 Min)	800-222-3456	XX		

7. HOSPITALS										
NAME	ADDRESS	TRAVEL TIME		PHONE	TRAUMA		HELIPAD		BURN CENTER	
		AIR	GRND		Yes	No	Yes	No	Yes	No
Sierra View Hospital	465 W Putnam Ave, Porterville, CA	N/A	40min.	559-788-6176		XX		XX		XX
Kaweah Health Medical Center	400 W. Mineral King Ave. Visalia, CA 36°19.68' N, 119°17.63' W	5 Min	60 min.	559-624-2000	L-3			XX		XX
Kern Medical Center	1700 Mt. Vernon Ave. Bakersfield, CA 35° 23.05' N, 118° 58.15' W	15 Min	60 Min.	661-326-2000	L-2			XX		XX
Community Regional Medical Center	2823 Fresno St. Fresno, CA 36° 45.65' N, 119° 47.12' W	15 Min	70 Min	559-459-4220	L-1			XX	XX	
Adventist Health Bakersfield	2615 Chester Ave. Bakersfield, CA 35° 23.02' N, 119° 01.13' W	15 Min	45 Min	661-395-3000		XX	XX			

8. MEDICAL EMERGENCY PROCEDURES	
<p><b>“RED IWI” MEDICAL-EMERGENCY PLAN:</b></p> <ul style="list-style-type: none"> <li>Contact Communications on Command and declare you have a <b>RED IWI</b></li> <li>Following the 8-Line on the back of the IAP or page 118 of the 2018 IRPG</li> <li>Tell them <b>Who</b> you are, <b>Where</b> you are, <b>What</b> you have, and <b>What</b> you need.</li> <li>Update Communications once the patient has been transported.</li> <li>Close the loop with MEDL at the end of shift.</li> </ul>	<p><b>“Yellow or Green” NON-EMERGENCY MEDICAL PLAN:</b></p> <ul style="list-style-type: none"> <li>Contact Division / Communications and declare you have a <b>“Non-Emergency Medical.”</b></li> <li>Complete the 8-line if needed and turn it in to the medical unit at the end of the shift</li> </ul> <p style="text-align:center;"><b>ICP/Camp Emergencies</b></p> <ul style="list-style-type: none"> <li>Tulare ICP- Dial 911</li> <li>Porterville FOB – Emergency Rescue Logistics</li> </ul> <p style="text-align:center;">Notify MEDL and SOF for “Red or Yellow” in camp IWI</p>

**Medical Incident Report**

FOR A **NON-EMERGENCY INCIDENT**: WORK THROUGH CHAIN OF COMMAND TO REPORT AND TRANSPORT INJURED PERSONNEL AS NECESSARY.

FOR A **MEDICAL EMERGENCY**: IDENTIFY ON SCENE INCIDENT COMMANDER BY NAME AND POSITION AND ANNOUNCE **"MEDICAL EMERGENCY"** TO INITIATE RESPONSE FROM COMMUNICATIONS

**Use the following items to communicate situation to communications/dispatch.**

**1. CONTACT COMMUNICATIONS / DISPATCH (Verify correct frequency prior to starting report)**

*Ex: "Communications, Div. Alpha. Stand-by for Emergency Traffic."*

**2. INCIDENT STATUS:** Provide incident summary (including number of patients) and command structure.

*Ex: "Communications, I have a Red priority patient, unconscious, struck by a falling tree.*

*Requesting air ambulance to Forest Road 1 at (Lat./Long.)*

*"This will be the Trout Meadow Medical Incident, IC is TFLD Jones. EMT Smith is providing medical care."*

Severity of Emergency AND Transport Priority (priority 1, 2, 3)	<input type="checkbox"/> <b>RED / PRIORITY 1 Life or limb threatening injury or illness. Evacuation need is IMMEDIATE</b> <i>Ex: Unconscious, difficulty breathing, bleeding severely, 2° – 3° burns more than 4 palm sizes, heat stroke, disoriented.</i>	
	<input type="checkbox"/> <b>YELLOW / PRIORITY 2 Serious Injury or illness. Evacuation may be DELAYED if necessary.</b> <i>Ex: Significant trauma, unable to walk, 2° – 3° burns not more than 1-3 palm sizes.</i>	
	<input type="checkbox"/> <b>GREEN / PRIORITY 3 Minor Injury or illness. Non-Emergency transport</b> <i>Ex: Sprains, strains, minor heat-related illness.</i>	
Nature of Injury or Illness & Mechanism of Injury		<i>Brief Summary of Injury or Illness (Ex: Unconscious, Struck by Falling Tree)</i>
Transport Request		<i>Air Ambulance / Short Haul/Hoist Ground Ambulance / Other</i>
Patient Location		<i>Descriptive Location &amp; Lat. / Long. (WGS84)</i>
Incident Name		<i>Geographic Name + "Medical" (Ex: Trout Meadow Medical)</i>
On-Scene Incident Commander		<i>Name of on-scene IC of Incident within an Incident (Ex: TFLD Jones)</i>
Crew Patient Care		<i>Name of Care Provider (Ex: EMT Smith)</i>

**3. INITIAL PATIENT ASSESSMENT:** Complete this section for each patient as applicable (start with the most severe patient)

Agency Affiliation: (NO PATIENT NAMES)      Federal      Contractor      Local Government

Patient Assessment:      Age:      Weight:      Chief Complaint:

(If pertinent to Injury)      Skin Signs: (color/moisture/temp)      Level of Consciousness:      BP:      HR:      Respirations:

Treatment:

**4. TRANSPORT PLAN:**

Evacuation Location (drop point, intersection, helispot, Lat. / Long, hazards)      Patient's ETA to Location:

**5. ADDITIONAL RESOURCES / EQUIPMENT NEEDS:**

*Paramedic / EMT - Crews - Immobilization Devices - AED - Oxygen - Trauma Bag - IV/Fluid(s) - Splints - Rope rescue - Wheeled litter - HAZMAT - Extrication*

**6. COMMUNICATIONS: Identify State Air/Ground EMS Frequencies and Hospital Contacts as applicable**

Function	Channel Name/Number	Receive (RX)	Tone/NAC *	Transmit (TX)	Tone/NAC *
COMMAND					
AIR-TO-GRND					

**7. CONTINGENCY: Considerations:** If primary options fail, what actions can be implemented in conjunction with primary evacuation method? Be thinking ahead.

**8. ADDITIONAL INFORMATION:** Updates/Changes, etc.

**REMEMBER:** Confirm ETA's of resources ordered. Act according to your level of training. Be Alert - Keep Calm - Think Clearly - Act Decisively

\*\*\* Follow up with MEDL upon return to ICP \*\*\*