

- CORRECTED



Windy Fire

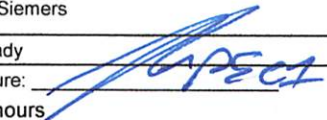
October 6th – October 7th, 2021
0600 Wednesday – 0600 Thursday

CA-TIA-003058



**Operational Briefing, Check-In Form, IAP, Extension/Crew
Swap Forms, Maps, DEMOB, Evaluations, and Finance**

ORGANIZATION ASSIGNMENT LIST (ICS 203)

1. Incident Name: WINDY FIRE		2. Operational Period: Date From: 10/6/2021 Time From: 0600		Date To: 10/7/2021 Time To: 0600	
3. Incident Commander(s) and Command Staff:			7. Operation Section:		
IC/UC's		Rick Young	Operations		Steve Burns
Deputy		Carlton Joseph	Deputy Operations		Alex McBath, Ernie Villa(t)
Safety Officer		Dave Welch, Jason Winbigler	Night Ops		Dave Provencio
Information Officer		Nathan Judy, Sue Exline	Staging Area		
Liaison Officer		Rick Alpert, Corey Rose(t)	Branch		1
					Kim Olson
4. Agency/Organization Representatives:					
Agency/Organization	Name		Division/Group		
BIAAA	Nate Gogna		Division/Group	A	Richard Sandoval, Thaddeus Niebel(t)
SQF AA	Eric La Price		Division/Group	C	Mike Huneke, Nate LaRusso(t)
SQF AAREP	Al Watson, Tony Martinez		Division/Group		
Tule River Tribal Chair	William Garfield		Branch	3	Billy Steers
Tribal Rep./Tule River FD	Richard Brown		Division/Group	D	Brian Tai, Daniel Casto(t)
			Division/Group	E	Robert Sollami, Danny Garcia(t)
Tulare Co. Fire AREP	Kevin Riggi		Division/Group	J	Brent Johnson, Tim Snyder(t)
SQF Chief 2	Jack Medina		Division/Group	K/L	Tony Davis, Brian Price(t)
Tulare Co. Sheriff AREP	Randy Gunderman		Division/Group		
CCC Rep.	Aaron Bayhon		Division/Group		
Lead READ	Monique Sanchez		Branch	7	Gary Monday
OES AREP	Randy Unkovich, Dave Stone		Division/Group	P	Louie Orozco, Travis Clendenen(t)
SCE	Troy Whitman, Kyle Gordon(t)		Division/Group	R/Y	Mike Smith, Greg Perry(t), Brian Borden(t)
ARA	Linda Chappell		Division/Group		
CALFIRE	Will Goodman, Gratian Bidart		Division/Group		
5. Planning Section:			Branch	Night	
Chief	Jason Schillinger, Rick Leuck		Division/Group	A	Mark Sachara
Deputy	Robert Ashby(t), Ryan Wakefield(t), Blake Abbott(t)		Division/Group		
Resource Unit	Harry Kelmanson, Kelly Smyth(t), Robert Villa(t)		Division/Group		
			Division/Group		
Situation Unit	Tad Morelock, Frank Baker, Josh Massie(t)		Division/Group		
			Branch		
Documentation Unit	Johanna Ostling		Division/Group		
Demobilization Unit	Dave Loop		Division/Group		
GISS	Dawn Hutchinson, Bob Kirk, Jerry Petruzalek, Joel Silverman		Division/Group		
			Branch		
FBAN	Jeff Shelton		Division/Group		
IMET	Rich Thompson, Philomon Geertson (t)		Division/Group		
			Division/Group		
Training Tech Spec	Brad Smith, Matthew Van Hagen(t)		Branch		
ITSS	Jim Youngblood, Rigoberto Martinez, Justin LaMay		Division/Group		
			Division/Group		
Human Resources	Andrea Cabida		Division/Group		
6. Logistics Section			Air Operations Branch		Director: John Keesee, Sarah Culhane(t)
Chief	Brett Shurr, Jim Eckroth, Ken Kumpe, Rickie Crowthers		Air Support Group Supervisor		Ray Ucha, Cole Wallace(t)
Supply Unit	Mike Bradford		Air Tactical Group Supervisor		Alex Ihle, Greg Haxby
			Helibase Manager		Cindy Bradley, Lynn Corren(t)
Ordering	Kate Morris				
Facilities Unit	Tim Brown		8. Finance/Administration Section:		
Ground Support Unit	Zeb Wilcox		Chief		Theresa Fork
Communications Unit	Ken Earle		Time Unit		Janice Brown, Maggie Prochazka
Medical Unit	Newt Ong, Robert Russell		Comp/Claims Unit		Elaine Downing
Base Camp Manager	Crystal Danheiser, Dion Nugent(t), Dave Roberts(t)		Cost Unit		Roger Siemers
Food Unit	Gary Simons		EQTR		Sue Cady
Prepared By: Name:	Jason Schillinger	Position/Title:	PSC	Signature:	
ICS 203		Date/Time:	10/5/2021 2300 hours		



INCIDENT Weather Forecast



FORECAST NO: 24 **NAME OF FIRE:** Windy
PREDICTION FOR: Wed-Thu **UNIT:** CA-TIA
SHIFT DATE: 10/06–10/07 (0600-0600) **SIGNED:** Philomon Geertson (T) / Rich Thompson
FORECAST ISSUED: 10/05/21 @ 1500 **Incident Meteorologist**

WEATHER DISCUSSION: High pressure ridging will continue to erode and shift off to the east ahead of a strong cold front and upper level trough. This will promote further moistening and cooling of the air mass today through Thursday. By late Thursday night into Friday, the cold front will sweep across the Southern Sierras and bring chances for light precipitation along with gusty winds, high humidity, and chilly temps.

WEATHER FORECAST FOR TODAY:

WEATHER: Partly sunny to mostly cloudy. Areas of smoke.

MAX TEMPERATURES: 70-77 below 4,000 ft. west side and below 5,000 ft. east side; 60-70 at higher elevations.

MIN HUMIDITY: 26-34% below 6,000 feet; 30-40% above.

20 FT WINDS:
RIDGETOP - Variable or westerly 3-7 MPH with gusts up to 12 MPH through mid-morning, veering west northwest 6-9 MPH, with gusts up to 17 MPH in the afternoon.
SLOPE/VALLEY - Through 0900: downslope/downvalley 2-5 MPH with gusts up to 8 MPH; except, downvalley 4-8 MPH with gusts up to 15 MPH along the Kern River.
0900-1630: Becoming upslope/upvalley 3-8 MPH with gusts up to 13 MPH, except 6-10 MPH with gusts up to 16 MPH along the Kern River.
1630-1800: Winds diminishing and starting to turn downslope/downvalley.

STABILITY/INVERSION: Inversion dissipating 1000-1100.

OUTLOOK FOR TONIGHT:

WEATHER: Mostly to partly cloudy. Areas of smoke.

MIN TEMPERATURES: 41 highest ridges to 55 Kern Valley, locally down to 36 sheltered valleys/basins.

MAX HUMIDITY: 45-55%, except 55-75% above 6,000 feet.

20 FT WINDS:
RIDGETOP - West northwest 4-8 MPH with gusts up to 15 MPH early, becoming westerly or variable 3-5 MPH with gusts up to 12 MPH overnight.
SLOPE/VALLEY - Downslope/downvalley 2-5 MPH with gusts up to 8 MPH; except, downvalley 5-9 MPH with gusts up to 16 MPH along the Kern River.

STABILITY/INVERSION: Inversion developing after 1800.

OUTLOOK FOR WEDNESDAY: Partly sunny. Highs 56-74. Winds becoming southwest, gusting to 20 MPH.

Incident Weather Station Data --- SCAN CODE with Smart Phone

Tiger Flat (IRAWS 46) – ridgetop	Porterville – Porterville Camp
Kern (IRAWS 48) – Kern River Valley	Kern Co. Landfill – Camp 9
Johnsondale – sheltered basin	Sugarloaf Dr – northern slope
Peppermint – upper eastern slope	Uhl – lower western slope



FIRE BEHAVIOR FORECAST

FORECAST NUMBER: 24	TYPE OF FIRE: Wildfire
FIRE NAME: Windy Fire	OPERATIONAL PERIOD: 10/06-07/21 0600-0600
DATE ISSUED: October 5, 2021	TIME ISSUED: 20:00
UNIT: CA-TIA-003058	SIGNED: <i>Jeff Shelton</i> Typed/printed: Jeff Shelton (LTAN)

INPUTS

WEATHER SUMMARY: *** *Trending Cooler.... More Humid****
High pressure will erode and shift east ahead of a strong cold front. Further moistening and cooling through Thursday. Late Thursday into Friday, the cold front will bring chances for light precipitation, along with gusty winds, high humidity, and chilly temps.

Day
Max. Temperatures- 70°-77° Min. Humidity-26 to 30% Wind- West, then NW up to 9 mph, Gusts 17 mph
Night
Min. Temperatures- 36°-55° Max. Humidity-55 to 75% Wind- WNW, shift W up to 5 mph, Gusts to 12 mph

OUTPUTS

FIRE BEHAVIOR

GENERAL:

- The fire is firmly seated within areas of high tree mortality... **Special Caution is Required!!!**
- Steep terrain will foster rollout.... **as Heavy Fuels are Weakened by Deep Seated Fire!!**
- PIG values will be linked to shading from smoke... **Peak Sun = Peak Spotting Potential!**
- Firing opportunities are now changing... **Plan on Shorter Burn Windows... More Torch Mix!**
- Don't Guess. Know the "sweet spot" in your burn windows... **Monitor your Weather Trends!!**
- Has your fireline been static for days... **Fire Weakened Trees are Becoming Weaker 24/7!**
- Risk of rollout, ash pits, snags... **Know when your piece of ground was last impacted by fire!**

SPECIFIC:

All Divisions: During Peak Heating... FUELS Become ... DRY, AVAILABLE, RECEPTIVE...

Flame Lengths- 1-4 ft. in Grass, Up to 20 ft. in Brush/Understory... **Fuels Driven**

Rate of Spread- Up to 15 chains/hour in Grass, Up to 30 chains/hour in Brush... **Fuels Driven**

Spotting Distances- Up to a 1/8 mile from Grass/Brush, Up to 1/4 mile in Timber (From Torching)

Probability of Ignition- (Day) Unshaded Up to 70% - Shaded- Up to 40% (Night) Down to <30%

AIR OPERATIONS:

Sunrise: 06:56

Sunset: 18:35

Expect fair smoke dispersion until the lower elevation inversion breaks around noon. Limited dissipation later. Mixing heights start out at less than 400 feet; rise to 4,300 AGL; then return to less than 400 feet after sunset. Slightly better ventilation.

SAFETY

Fire Weakened Trees Lose Their Strength....

Day by Day.....Hour by Hour.....

Aircraft Work Enhances Your Hazard Tree Risk!

Review IRPG pages 22-23!

Windy Fire – Safety Message

INCIDENT #CA-TIA-003058 DATE: 10/6-10/7/2021 TIME: 0600-0600 Day/Night Shift

General Safety Concerns:

- **Driving:** Thick smoke and narrow/dusty roads, others driving faster than we do. **HEADS UP!!!**
- **Risk versus benefit:** Don't get caught up in the moment! Always weigh the risks of tactical operations against the potential benefit. **Especially on steep slopes at night!**
- **Drought conditions:** Use all of the assessment tools; Heads up for fire behavior; Ensure **LCES** is in place; Take extra time to ensure it is safe to engage! Use extra caution all the time.
- **All trees can be dangerous.** They don't have to be leaning, dead, burned, or gnarly. Perform adequate assessments, minimize exposure and risk around all trees.
- **Line Construction:** Use all of the safety protocols concerning line construction. Watch the spacing, footing, and other firefighters below.

RECOGNIZE THE SIGNS OF FATIGUE

The effects of fatigue can directly hinder our abilities to:

- Perform various tasks, maintain a positive and supportive attitude
- Maintain situational awareness and a high degree of alertness
- React appropriately in a timely manner and fashion
- Retain a sharp memory and recollection of information

Planning for Medical Emergencies (see IRPG Page 2)

Prior to each operational period, Incident commanders, supervisors, and all wildland firefighters need to ask and be able to answer the following three questions:

1. What are we going to do if someone gets hurt?
 - Are there personnel on your crew/division/fire that can provide medical support?
 - What type of equipment is available to treat and transport injured personnel?
2. How will we get them out of here?
 - Could you get an injured firefighter to a road or to a helispot?
 - How many personnel and what kind of equipment would you need to get an injured firefighter out?
3. How long will it take to get them to a hospital?
 - Where is the closest hospital?
 - Will you use air or ground transportation?
 - Could conditions change and affect the transportation timeline?

- Smoke/clouds/nightfall
- Fire behavior
- Mechanical failures

Risk Management Process: Implement the risk management process for all aspects of this ongoing event. The steps of the risk management process are:

1. **Situation Awareness**
2. **Hazard Assessment**
3. **Hazard Control**
4. **Decision Point**
5. **Evaluate**

(see page 1 of the 2018 IRPG)

Leadership:

Good operational leaders will:

- ◆ **TAKE CHARGE** of assigned resources.
- ◆ **MOTIVATE** firefighters with a "can-do safety attitude.
- ◆ **DEMONSTRATE INITIATIVE** by taking action in the absence of orders or direction.
- ◆ **COMMUNICATE** by giving specific instructions and taking feedback.
- ◆ **SUPERVISE** at the scene of action.

Prepared by
CIIMT5 Safety



Pacific Southwest Region
Peer Support/Critical Incident Stress Management

Our wildland firefighters and support employees are resilient under stress, shown time and again in our daily jobs. We do great; however, stress is cumulative. The fire season can and may have already pushed us and our coping mechanisms to the limit.

Here are a few reminders for employees working under these stressful conditions:

- Eat Right
- Stay Hydrated
- Get Plenty of Rest
- Connect with your support system (family, friends, co-workers...)
- Reach out for additional help if needed... (Peer Support, Clinician Services, Spiritual, Employee Assistance Program, etc.)

A CISM Coordinator/Peer Support will be onsite today.

We want to hear from you. How are you doing? How is your crew doing? What helps maintain resiliency? What are your plans for recuperation when the fires go out? How can we help? We have been so operational this year with COVID-19 mitigations and fire suppression. Are your needs being met in regard to crisis management? Would you or your crew or unit benefit from follow-up support? Connect with us today or call anytime. Thank you for all you do.

Wendy Flannery, R5 CISM/CAP Program Manager 209-283-4552
Brian Anderson, R5 CISM Coordinator(detailed) 818-317-3220

ASSIGNMENT LIST (ICS 204 WF)

CONTROLLED UNCLASSIFIED
INFORMATION/BASIC

1. Incident Name: <p style="text-align: center; font-weight: bold;">WINDY FIRE</p>	2. Operational Period: Date From: 10/06/21 Date To: 10/07/21 Time From: 0600 Time To: 0600	3. Branch Division <p style="text-align: center; font-size: 24pt; font-weight: bold;">1 A</p> <p style="text-align: center;">Page 1 of 1 Alpha</p>
--	---	---

4. Operations Personnel: Operations Section Chief: Steve Burns Branch Director: Kim Olson Division/Group Supervisor: Richard Sandoval, Thaddeus Niebel(t)	Night Ops: Dave Provencio Branch Safety: Air Attack: Alex Ihle, Greg Haxby
--	--

5. Resources Assigned:		** Resources Below in Bold are 12 Hour **					
Resource Identifier	ALS	LWD	Leader	Personnel	Request #	Hours	Reporting Location
HC2IA COLOR COUNTRY-5 → DIV C		10/11	KURTIS LITTLEFIELD	18	C-92	0600-1800	PORTERVILLE CAMP
HC2 PVT NORTH PACIFIC 83		10/10	JUAN PADILLA	20	C-83	0600-1800	PORTERVILLE CAMP
ENG3 SAN MANUEL BE241		10/12	DANIEL CORBAN	3	E-137	0600-1800	PORTERVILLE CAMP
ENG3 CLE 6-3		10/18	TIM CAPP	3	E-228	0600-1800	PORTERVILLE CAMP
ENG3 LPF E355		10/6	SPENCER LOVELACE	5	E-285	0600-1800	PORTERVILLE CAMP
ENG3 INF 331		10/9	GABRIEL GAMINO	5	E-296	0600-1800	PORTERVILLE CAMP
WTT1 MONROVIA 101		10/10	HARVEY HEWITT	2	E-322	0600-1800	PORTERVILLE CAMP
FALM UNDERDOG TIMBER → DIV C		10/18	GENE CASTRO	2	O-186	0600-1800	PORTERVILLE CAMP
CHIP PVT BAYS CHIPPER 164		10/17	MELLISA BAYS	3	E-164	0600-1800	PORTERVILLE CAMP
EMPF(T) SCOTT	x	10/14	LESLIE SCOTT	1	O-290	0600-1800	PORTERVILLE CAMP
EMTF DEVINCENZI		10/11	STEVEN DEVINCENZI	1	O-220	0600-1800	PORTERVILLE CAMP
SOF2 VARON (DIVS A/C)		10/16	DAVID VARON	1	O-596	0600-1800	PORTERVILLE CAMP

- 6. Work Assignments:**
- Mop-up to the extent necessary to keep fire within containment lines.
 - Mitigate hazard trees along the 107 Road.
 - Continue chipping in the community of Ponderosa.

- 7. Special Instructions:**
- Use appropriate suppression tactics based on current and expected fire behavior to defend the values at risk.
 - Follow all COVID-19 protocols and utilize appropriate PPE and social distancing to enhance personnel safety.
 - Resource avoidance areas will be red and white striped flagging combined with any other solid color.
 - Remove all trash and identify any excess supplies that need to be removed. Work with communications for transport needs.
 - Provide accountability of UTVs in your Divisions.

8. Communications

Name	Ch	Function	Rx Freq	Rx Tone	Tx Freq	Tx Tone	Notes
NIFC C1	1	COMMAND	170.9750N	T5 - 146.2	168.7000N	T5 - 146.2	Jordan - North
NIFC T1	6	TACTICAL	168.0500N	T5 - 146.2	168.0500N	T5 - 146.2	DIV A-NIGHT A
A/G TAC	14	A/G TAC	167.9875N		167.9875N		ALL DIVISIONS
CALCORD	15	MEDICAL	156.0750N	T6 - 156.7	156.0750N	T6 - 156.7	Medical
GUARD 25	16	AIRGUARD	168.6250N		168.6250N	T1 - 110.9	EMERGENCY
CALCORD	19	MEDICAL	156.0750N	T6 - 156.7	156.0750N	T6 - 156.7	Medical
GUARD 25	20	AIRGUARD	168.6250N		168.6250N	T1 - 110.9	EMERGENCY

9. Prepared by: Name:	Harry Kelmanson, Kelly Smyth(t)	RESL	Signature:
ICS 204	Date/Time: 10/5/2021	2200	Personnel Count: 64

ASSIGNMENT LIST (ICS 204 WF)

CONTROLLED UNCLASSIFIED
INFORMATION//BASIC

1. Incident Name: <p style="text-align: center;">WINDY FIRE</p>	2. Operational Period: Date From: 10/06/21 Date To: 10/07/21 Time From: 0600 Time To: 0600	3. Branch Division <p style="text-align: center;">1 C</p>
--	---	---

4. Operations Personnel: Page 1 of 2 **Charlie**

Operations Section Chief: Steve Burns	Night Ops: Dave Provencio
Branch Director: Kim Olson	Branch Safety:
Division/Group Supervisor: Mike Huneke, Nate LaRusso(t)	Air Attack: Alex Ihle, Greg Haxby

5. Resources Assigned:		** Resources Below in Bold are 12 Hour **					
Resource Identifier	ALS	LWD	Leader	Personnel	Request #	Hours	Reporting Location
HC2 PVT ISA 69		10/8	GUSTAVO BUENO	20	C-69	0600-1800	CAMP 9
HC2 PVT F&F FARM 79		10/7	JAVIER FRANCO	20	C-79	0600-1800	CAMP 9
HC2 PVT PACIFIC OASIS 85		10/10	LELAND DODDS	19	C-85	0600-1800	CAMP 9
ENG3 ST XMR 2140C	x	10/9	DAVE GLEN	21	E-540	0600-1800	CAMP 9
ENG3 HOLTVILLE BR36		10/8	JOHN ROBLES	3	E-156	0600-1800	CAMP 9
ENG6 TIMBERLINE BR56		10/8	MIKE WILLARDSON	4	E-210	0600-1800	CAMP 9
WTS1 PVT HAYNES 111		10/21	ZEBULUN LEATHERMAN	1	E-111	0600-1800	CAMP 9
WTT2 PVT UTAH FIRE 231		10/11	ANTHONY GORDON	2	E-231	0600-1800	CAMP 9
FALM C & K WILDLAND		10/19	T.D. WOODRUFF	2	O-627	0600-1800	CAMP 9
CHIP PVT FIRE TRAX 463		10/8	RACHELLE WILSON	3	E-463	0600-1800	CAMP 9
CHIP PVT SAW DISASTER SUPT 464		10/9	ISAMAEL JACQUEZ	3	E-464	0600-1800	CAMP 9
SMKJ RATAJ		10/14	RICHARD RATAJ	2	O-552	0600-1800	CAMP 9
SMKJ ANDERSON		10/13	TYLER ANDERSON	1	O-553	0600-1800	CAMP 9
EMPF HIBBARD	x	10/14	JASON HIBBARD	1	O-324	0600-1800	CAMP 9
EMTF LUCKER		10/17	SYDNEY LUCKER	1	E-600	0600-1800	CAMP 9
SOF2 VARON (DIVS A/C)		10/16	DAVID VARON	1	O-596	0600-1800	CAMP 9
REAF CARNEY		10/8	ANNA CARNEY	1	O-303	0600-1800	CAMP 9
REAF KELLOGG		10/9	JARROD KELLOGG	1	O-321	0600-1800	CAMP 9

- 6. Work Assignments:**
- Reinforce any current direct containment lines as needed to secure the fire perimeter.
 - Mop-up around the structures adjacent to the 22S21 Road and Peppermint Campground off of the Lloyd Meadow Road and to the extent necessary to keep fire within containment lines.
 - Complete chipping operations along Lloyd Meadow and Mountain 50 Road.

- 7. Special Instructions:**
- Use appropriate suppression tactics based on current and expected fire behavior to defend the values at risk.
 - Follow all COVID-19 protocols and utilize appropriate PPE and social distancing to enhance personnel safety.
 - Resource avoidance areas will be red and white striped flagging combined with any other solid color.
 - Remove all trash and identify any excess supplies that need to be removed. Work with communications for transport needs.
 - Provide accountability of UTVs in your Divisions.

Liberty ALS Ambulance assigned to support climbers working on the Trail of 100 Giants.

8. Communications

Name	Ch	Function	Rx Freq	Rx Tone	Tx Freq	Tx Tone	Notes
NIFC C1	1	COMMAND	170.9750N	T5 - 146.2	168.7000N	T5 - 146.2	Jordan - North
NIFC T3	7	TACTICAL	168.6000N	T5 - 146.2	168.6000N	T5 - 146.2	DIV C/P
A/G TAC	14	A/G TAC	167.9875N		167.9875N		ALL DIVISIONS
CALCORD	15	MEDICAL	156.0750N	T6 - 156.7	156.0750N	T6 - 156.7	Medical
GUARD 25	16	AIRGUARD	168.6250N		168.6250N	T1 - 110.9	EMERGENCY
CALCORD	19	MEDICAL	156.0750N	T6 - 156.7	156.0750N	T6 - 156.7	Medical
GUARD 25	20	AIRGUARD	168.6250N		168.6250N	T1 - 110.9	EMERGENCY

9. Prepared by: Name: Harry Kelmanson, Kelly Smyth(t) RESL Signature:

ICS 204 Date/Time: 10/5/2021 2200 Personnel Count: 106

ASSIGNMENT LIST (ICS 204 WF)

CONTROLLED UNCLASSIFIED
INFORMATION//BASIC

1. Incident Name: <p style="text-align: center;">WINDY FIRE</p>	2. Operational Period: Date From: 10/06/21 Date To: 10/07/21 Time From: 0600 Time To: 0600	3. Branch Division <p style="text-align: center;">3 D</p> <p style="text-align: right;">Page 1 of 1 Delta</p>
--	---	--

4. Operations Personnel:	
Operations Section Chief: Steve Burns	Night Ops: Dave Provencio
Branch Director: Billy Steers	Branch Safety:
Division/Group Supervisor: Brian Tai, Daniel Casto(t)	Air Attack: Alex Ihle, Greg Haxby

5. Resources Assigned:		** Resources Below in Bold are 12 Hour **					
Resource Identifier	ALS	LWD	Leader	Personnel	Request #	Hours	Reporting Location
HC1 VALYERMO IHC		10/9	SIMEON HAGENS	18	C-73	0600-1800	CAMP 9
HC1 VISTA GRANDE IHC		10/11	HOWARD DEETS	19	C-97	0600-1800	CAMP 9
HC1 TAHOE IHC		10/16	DANNY GUERRERO	21	C-113	0600-1800	CAMP 9
HC1 LOS PADRES IHC		10/16	MATT AOKI	19	C-115	0600-1800	CAMP 9
REMS PVT AVDENTURE MEDICS 389	x	10/15	KOEBY BENNETT	4	E-389	0600-1800	CAMP 9
EMPF PINGREE	x	10/6	BRIAN PINGREE	1	S-228	0600-1800	CAMP 9
EMPF COURTNEY		10/6	MATT COURTNEY	1	S-228	0600-1800	CAMP 9
SOF2(T) MARQUEZ (DIVS D/E)		10/15	JOAQUIN MARQUEZ	1	O-580	0600-1800	CAMP 9
REAF HOYLE		10/10	LAUREN HOYLE	1	O-322	0600-1800	CAMP 9
REAF GIRADO		10/14	AMY GIRADO	1	O-601	0600-1800	CAMP 9

6. Work Assignments:

- Construct direct handline or cold-trail where feasible from Bakers Peak to Johnsondale.
- Prep the Whiskey Flat Trail from Fairview to Kernville.
- Prep the Tobias Creek Trail from Fairview to the fire's edge.

7. Special Instructions:

- Utilize rafts to cross the Kern River where access is needed.
- Use appropriate suppression tactics based on current and expected fire behavior to defend the values at risk.
- Follow all COVID-19 protocols and utilize appropriate PPE and social distancing to enhance personnel safety.
- Resource avoidance areas will be red and white striped flagging combined with any other solid color.
- Remove all trash and identify any excess supplies that need to be removed. Work with communications for transport needs.
- Provide accountability of UTVs in your Divisions.

8. Communications

Name	Ch	Function	Rx Freq	Rx Tone	Tx Freq	Tx Tone	Notes
NIFC C1	1	COMMAND	170.9750N	T5 - 146.2	168.7000N	T5 - 146.2	Jordan - North
NIFC T5	8	TACTICAL	166.7250N	T5 - 146.2	166.7250N	T5 - 146.2	DIV D
A/G TAC	14	A/G TAC	167.9875N		167.9875N		ALL DIVISIONS
CALCORD	15	MEDICAL	156.0750N	T6 - 156.7	156.0750N	T6 - 156.7	Medical
GUARD 25	16	AIRGUARD	168.6250N		168.6250N	T1 - 110.9	EMERGENCY
CALCORD	19	MEDICAL	156.0750N	T6 - 156.7	156.0750N	T6 - 156.7	Medical
GUARD 25	20	AIRGUARD	168.6250N		168.6250N	T1 - 110.9	EMERGENCY

9. Prepared by: Name: Harry Kelmanson, Kelly Smyth(t) RESL Signature:

ICS 204 Date/Time: 10/5/2021 2200 Personnel Count: 86

ASSIGNMENT LIST (ICS 204 WF)

CONTROLLED UNCLASSIFIED
INFORMATION//BASIC

1. Incident Name: <b style="text-align: center;">WINDY FIRE	2. Operational Period: Date From: 10/06/21 Date To: 10/07/21 Time From: 0600 Time To: 0600	3. Branch <b style="text-align: center;">3	Division <b style="text-align: center;">E
---	---	--	---

4. Operations Personnel: Page 1 of 2 Echo

Operations Section Chief: Steve Burns	Night Ops: Dave Provencio
Branch Director: Billy Steers	Branch Safety:
Division/Group Supervisor: Robert Sollami, Danny Garcia(t)	Air Attack: Alex Ihle, Greg Haxby

5. Resources Assigned: ** Resources Below in Bold are 12 Hour **

Resource Identifier	ALS	LWD	Leader	Personnel	Request #	Hours	Reporting Location
HC1 SIERRA IHC		10/10	ALAN ROBY	19	C-94	0600-1800	CAMP 9
HC2 PVT TOM FERY 40		10/18	SERAFIN GARCIA	20	C-40	0600-1800	CAMP 9
HC2PVT PACIFIC COAST 45		10/16	ZAC CURTIS	20	C-45	0600-1800	CAMP 9
HC2 PVT NORTH PACIFIC 84		10/10	TOMAS GOMEZ	20	C-84	0600-1800	CAMP 9
HC2 PVT ROCHA 93		10/12	ANDY CRUZ	20	C-93	0600-1800	CAMP 9
WFM2 WHISKEY FLATS		10/18	RICHARD BAKER	9	O-682	0600-1800	CAMP 9
ENG T/F OES 1803		10/7	MIKE BROWN	18	E-335	0600-1800	CAMP 9
ENG6 PVT PICKERING 202		10/12	JOSEPH GODDARD	3	E-202	0600-1800	CAMP 9
DO22 LPF 4		10/9	GILBERT ROSALES	3	E-312	0600-1800	CAMP 9
WTT1 PVT DYNAMITE 514		10/15	FRED SANCHEZ	1	E-514	0600-1800	CAMP 9
WTT2 SAGLE FD 1226		10/9	JOSEPH BANELEY	2	E-266	0600-1800	CAMP 9
WTT2 LPF 5		10/12	DANIIL SLEPUKHIN	2	E-513	0600-1800	CAMP 9
FALM1 EYE OF EAGLE		10/13	EDWARD NIX	2	O-447	0600-1800	CAMP 9
MAS1 PVT MOOSIOS 606 EXCAVATOR		10/18	MIKE CRAIG	2	E-606	0600-1800	CAMP 9
TFLD (T) ANDERSON		10/9	BRIAN ANDERSON	1	O-391	0600-1800	CAMP 9
FAL2 SMITH		10/12	DAMIAN SMITH	1	O-436	0600-1800	CAMP 9
FAL2 MASSEY		10/12	NICHOLAS MASSEY	1	O-437	0600-1800	CAMP 9
REMS YOSEMITE		10/11	JACK CRAMER	3	O-481	0600-1800	CAMP 9

6. Work Assignments:

- Mop-up control lines to the extent necessary to keep fire within containment lines.
- Assess suppression repair needs throughout the Division.
- Snag roads to increase access and safety for firefighters.

7. Special Instructions:

- Use appropriate suppression tactics based on current and expected fire behavior to defend the values at risk.
- Follow all COVID-19 protocols and utilize appropriate PPE and social distancing to enhance personnel safety.
- Resource avoidance areas will be red and white striped flagging combined with any other solid color.
- Remove all trash and identify any excess supplies that need to be removed. Work with communications for transport needs.
- Provide accountability of UTVs in your Divisions.

8. Communications

Name	Ch	Function	Rx Freq	Rx Tone	Tx Freq	Tx Tone	Notes
NIFC C28	4	COMMAND	170.0750N	T5 - 146.2	164.0125N	T5 - 146.2	Baker Peak Lookout - Southeast
NIFC T6	9	TACTICAL	166.7750N	T5 - 146.2	166.7750N	T5 - 146.2	DIV E
A/G TAC	14	A/G TAC	167.9875N		167.9875N		ALL DIVISIONS
CALCORD	15	MEDICAL	156.0750N	T6 - 156.7	156.0750N	T6 - 156.7	Medical
GUARD 25	16	AIRGUARD	168.6250N		168.6250N	T1 - 110.9	EMERGENCY
CALCORD	19	MEDICAL	156.0750N	T6 - 156.7	156.0750N	T6 - 156.7	Medical
GUARD 25	20	AIRGUARD	168.6250N		168.6250N	T1 - 110.9	EMERGENCY

9. Prepared by: Name: Harry Kelmanson, Kelly Smyth(t) RESL Signature:

ICS 204 Date/Time: 10/5/2021 2200 Personnel Count: 147

ASSIGNMENT LIST (ICS 204 WF)

CONTROLLED UNCLASSIFIED
INFORMATION//BASIC

1. Incident Name: <p style="text-align: center; font-weight: bold;">WINDY FIRE</p>	2. Operational Period: Date From: 10/06/21 Date To: 10/07/21 Time From: 0600 Time To: 0600	3. Branch Division <p style="text-align: center; font-size: 24pt; font-weight: bold;">3 J</p> Page 1 of 1 Juliet
--	---	---

4. Operations Personnel:	
Operations Section Chief: Steve Burns	Night Ops: Dave Provencio
Branch Director: Billy Steers	Branch Safety:
Division/Group Supervisor: Brent Johnson, Tim Snyder(t)	Air Attack: Alex Ihle, Greg Haxby

5. Resources Assigned:	** Resources Below in Bold are 12 Hour **						
Resource Identifier	ALS	LWD	Leader	Personnel	Request #	Hours	Reporting Location
HC2 PVT TRI-CITIES 80		10/9	MARTIN MORALES	20	C-80	0600-1800	CAMP 9
HC2 PVT BLUE MOUNTAIN 86		10/10	JORGE PEREZ	20	C-86	0600-1800	CAMP 9
HC2 PVT 1ST CHOICE 62		10/12	HELIODORO VERA	20	C-62	0600-1800	CAMP 9
ENG3 S/T XKIC 5053C		10/7	SAL GUTIERREZ	18	E-332	0600-1800	CAMP 9
ENG3 OES 6318		10/12	RON SPELLMAN	4	E-136	0600-1800	CAMP 9
WTT2 AZ SJO 268		10/7	CHRIS STRUBLE	2	E-268	0600-1800	CAMP 9
WTT2 BDF 51		10/9	FELIPE DELGADO	1	E-319	0600-1800	CAMP 9
WTT2 ANF 10		10/17	SERGIO PINA	2	E-599	0600-1800	CAMP 9
WTS2 PVT CATE LAND 61		10/9	RUSTY LEFLAR	1	E-61	0600-1800	CAMP 9
DOZ3 PVT LOVATO 318		10/9	NATHANEAL LOVATO	2	E-318	0600-1800	CAMP 9
FALM1 SOUTHWEST SAWYERS 82		10/15	RYAN CORMAN	2	O-448	0600-1800	CAMP 9
HEQB MCINTYRE		10/14	JARED MCINTYRE	1	O-549	0600-1800	CAMP 9
HEQB(T) JOYCE		10/14	JACOB JOYCE	1	O-550	0600-1800	CAMP 9
FALB QUINN		10/17	MATTHEW QUINN	1	O-629	0600-1800	CAMP 9
EMPF SWENSON	x	10/15	BRYAN SWENSON	1	O-602	0600-1800	CAMP 9
EMTF JOHNSON		10/12	JUSTIN JOHNSON	1	O-514	0600-1800	CAMP 9
FALM JACKSON		10/12	KYLE JACKSON	1	0-272	0600-1800	"
FALM FIRE FALLERS		10/18	JIM FRICKSON	2	0-626	0600-1800	"

- 6. Work Assignments:** KL -> FALM AMERICAN 10/18 JARED MCKINNEY 2 0-623 0600-1800 "
- Mop-up control lines to the extent necessary to keep fire within current containment lines.
 - Assess suppression repair needs along the 16 Road from DP-5 to the 22 Road.
 - Snag roads to increase access and safety for firefighters.

- 7. Special Instructions:**
- Use appropriate suppression tactics based on current and expected fire behavior to defend the values at risk.
 - Follow all COVID-19 protocols and utilize appropriate PPE and social distancing to enhance personnel safety.
 - Resource avoidance areas will be red and white striped flagging combined with any other solid color.
 - Remove all trash and identify any excess supplies that need to be removed. Work with communications for transport needs.
 - Provide accountability of UTVs in your Divisions. E-80

8. Communications

Name	Ch	Function	Rx Freq	Rx Tone	Tx Freq	Tx Tone	Notes
NIFC C12	3	COMMAND	173.0375N	T5 - 146.2	167.3250N	T5 - 146.2	Tobias Peak - South
NIFC T7	10	TACTICAL	168.2500N	T5 - 146.2	168.2500N	T5 - 146.2	DIV J
A/G TAC	14	A/G TAC	167.9875N		167.9875N		ALL DIVISIONS
CALCORD	15	MEDICAL	156.0750N	T6 - 156.7	156.0750N	T6 - 156.7	Medical
GUARD 25	16	AIRGUARD	168.6250N		168.6250N	T1 - 110.9	EMERGENCY
CALCORD	19	MEDICAL	156.0750N	T6 - 156.7	156.0750N	T6 - 156.7	Medical
GUARD 25	20	AIRGUARD	168.6250N		168.6250N	T1 - 110.9	EMERGENCY

9. Prepared by: Name: Harry Kelmanson, Kelly Smyth(t) RESL Signature:

ICS 204 Date/Time: 10/5/2021 2200 Personnel Count: 97

ASSIGNMENT LIST (ICS 204 WF)

CONTROLLED UNCLASSIFIED
INFORMATION//BASIC

1. Incident Name: <p style="text-align: center; font-weight: bold;">WINDY FIRE</p>	2. Operational Period: Date From: 10/06/21 Date To: 10/07/21 Time From: 0600 Time To: 0600	3. Branch Division <p style="text-align: center; font-size: 24pt; font-weight: bold;">3 K/L</p>
4. Operations Personnel:		Page 1 of 2 Kilo/Lima

Operations Section Chief: Steve Burns	Night Ops: Dave Provencio
Branch Director: Billy Steers	Branch Safety:
Division/Group Supervisor: Tony Davis, Brian Price(t)	Air Attack: Alex Ihle, Greg Haxby

** Resources Below in Bold are 12 Hour **							
Resource Identifier	ALS	LWD	Leader	Personnel	Request #	Hours	Reporting Location
HC2IA WWF 5		10/17	CAMILO DAVIS	19	C-114	0600-1800	PORTERVILLE CAMP
HC2 GRIZZLY		10/9	SOLIZE ORTIZ	20	C-38	0600-1800	PORTERVILLE CAMP
HC2 SCORPIONS 4		10/16	MICHAEL VALENTI	20	C-107	0600-1800	PORTERVILLE CAMP
ENG3 S/T OES 6849C		10/9	DAVE SENEVIRATNE	21	E-555	0600-1800	PORTERVILLE CAMP
ENG4 PVT BIG STATE		10/11	CHRIS TERRY	3	E-583	0600-1800	PORTERVILLE CAMP
ENG6 PVT L&R REFOREST 211		10/12	JAY FLORA	3	E-211	0600-1800	PORTERVILLE CAMP
ENG6 SQF PT 21		10/18	HUMBERTO VILLEGAS JR	2	E-607	0600-1800	PORTERVILLE CAMP
DOZ2 PVT TOUGH 155		10/6	MICHAEL STREETER	2	E-155	0600-1800	PORTERVILLE CAMP
DOZ2 LPF 3		10/10	MICHAEL FUERCH	3	E-311	0600-1800	PORTERVILLE CAMP
DOZ3 PVT SHANNON 63		10/18	BILL SHANNON	2	E-63	0600-1800	PORTERVILLE CAMP
DOZ3 PVT SHANNON 65		10/16	FED VAN DUSEN	2	E-65	0600-1800	PORTERVILLE CAMP
DOZ3 PVT SHANNON 181		10/14	ANTHONY PEZZI	2	E-181	0600-1800	PORTERVILLE CAMP
WTS2 PVT JARED LEWIS 112		10/10	DONALD MIELKE	1	E-112	0600-1800	PORTERVILLE CAMP
WTS3 PVT HURL 449		10/19	RUSSELL HURL	1	E-449	0600-0600	PORTERVILLE CAMP
FALM AMERICAN CHAINSAW → DIV I		10/18	JARED MCKINNEY	2	O-623	0600-1800	PORTERVILLE CAMP
FALM PVT PACIFIC RIDGELINE 624		10/18	GABRIEL SOTELA	2	O-624	0600-1800	PORTERVILLE CAMP
MAST PVT SHANNON 172		10/10	CHUCK SANBORG	2	E-172	0600-1800	PORTERVILLE CAMP
MAST PVT FORKNER 261		10/16	STEVE CHAPIT	2	E-261	0600-1800	PORTERVILLE CAMP

- 6. Work Assignments:**
- Mop-up control lines to keep fire within the current containment lines.
 - Respond to service calls as needed.
 - Perform tactical patrol and observe growth between Mountain 50 Road north to Lone Pine Mountain.
 - Snag roads to increase access and safety for firefighters.

- 7. Special Instructions:**
- Use appropriate suppression tactics based on current and expected fire behavior to defend the values at risk.
 - Follow all COVID-19 protocols and utilize appropriate PPE and social distancing to enhance personnel safety.
 - Resource avoidance areas will be red and white striped flagging combined with any other solid color.
 - Remove all trash and identify any excess supplies that need to be removed. Work with Communications for transport needs.
 - Provide accountability of UTV's in your Divisions. E-81, E-415, E-340

8. Communications

Name	Ch	Function	Rx Freq	Rx Tone	Tx Freq	Tx Tone	Notes
NIFC C1 C12	1	COMMAND	170.9750N	T5 - 146.2	168.7000N	T5 - 146.2	Jordan - North
NIFC SP 1	11	TACTICAL	166.6000N	T5 - 146.2	166.6000N	T5 - 146.2	DIV K/L
A/G TAC	14	A/G TAC	167.9875N		167.9875N		ALL DIVISIONS
CALCORD	15	MEDICAL	156.0750N	T6 - 156.7	156.0750N	T6 - 156.7	Medical
GUARD 25	16	AIRGUARD	168.6250N		168.6250N	T1 - 110.9	EMERGENCY
CALCORD	19	MEDICAL	156.0750N	T6 - 156.7	156.0750N	T6 - 156.7	Medical
GUARD 25	20	AIRGUARD	168.6250N		168.6250N	T1 - 110.9	EMERGENCY

9. Prepared by: Name: Harry Kelmanson, Kelly Smyth(t) RESL Signature: KS

ICS 204 Date/Time: 10/5/2021 2200 Personnel Count: 109

ASSIGNMENT LIST (ICS 204 WF)

CONTROLLED UNCLASSIFIED
INFORMATION/BASIC

1. Incident Name: WINDY FIRE	2. Operational Period: Date From: 10/06/21 Date To: 10/07/21 Time From: 0600 Time To: 0600	3. Branch Division 7 P
---	---	---

4. Operations Personnel: Page 1 of 2 Papa

Operations Section Chief: Steve Burns	Night Ops: Dave Provencio
Branch Director: Gary Monday	Branch Safety: Fedrick Woods, Robert Garcia(t)
Division/Group Supervisor: Louie Orozco, Travis Clendenen(t)	Air Attack: Alex Ihle, Greg Haxby

5. Resources Assigned:	** Resources Below in Bold are 12 Hour **						
Resource Identifier	ALS	LWD	Leader	Personnel	Request #	Hours	Reporting Location
HC1 BIG BEAR IHC		10/6	KEVIN VALDIEVIRZ	20	C-72	0600-1800	PORTERVILLE CAMP
HC2IA BLACK EAGLES 2		10/6	GUSTAVO SANTOYO	21	C-77	0600-1800	PORTERVILLE CAMP
HC2IA KERN VALLEY		10/10	KYLE CLENDENEN	18	C-95	0600-1800	PORTERVILLE CAMP
HC2IA STANISLAUS 20		10/11	BRANDON HULL	19	C-96	0600-1800	PORTERVILLE CAMP
ENG3 PVT J3 CONTRACTING 227		10/14	WYATT LAWRENCE	3	E-227	0600-1800	PORTERVILLE CAMP
ENG6 UPPER PINE BRUSH 64		10/9	MARK WOLCOTT	3	E-569	0600-1800	PORTERVILLE CAMP
ENG6 UT ASF 631		10/10	BRYAN HUGHES	4	E-570	0600-1800	PORTERVILLE CAMP
ENG6 PVT ROCKY POINT 564		10/14	DANNY ROGERS	3	E-564	1800-0600	PORTERVILLE CAMP
ENG6 PVT NORTHERN UTAH 567		10/14	KRISTA SERAYCAR	3	E-567	0600-1800	PORTERVILLE CAMP
ENG6 PVT DUST CONTROL 571		10/10	CHAD MORRIS	3	E-571	0600-1800	PORTERVILLE CAMP
DOZ2 PVT MOOSIOS 12		10/19	MIKE HARRIS	2	E-12	0600-1800	PORTERVILLE CAMP
DOZ2 PVT CAROTHERS 379		10/10	JOEL BUCK	2	E-379	0600-1800	PORTERVILLE CAMP
DOZ3 PVT ZX 62		10/9	DOUG GROVE	2	E-62	0600-1800	PORTERVILLE CAMP
WTT1 PVT BARTLETT 531		10/13	BRIAN BARTLETT	1	E-531	0600-1800	PORTERVILLE CAMP
WTT2 INF 598		10/16	JACOB RIFFEL	2	E-598	0600-1800	PORTERVILLE CAMP
SKID1 PVT MOOSIOS 131		10/13	KENNETH GANDY	2	E-131	0600-1800	PORTERVILLE CAMP
SKGN PVT FLANAGAN 476		10/15	EARL FLANAGAN	2	E-476	0600-1800	PORTERVILLE CAMP
SKGN PVT WOODWARD 477		10/14	TIM CROSS	2	E-477	0600-1800	PORTERVILLE CAMP

- 6. Work Assignments:**
- Utilize aerial ignition (UAS) to create backing fire towards Wheatons along the fire edge from Bond Creek to Bear Creek.
 - Hold current indirect lines as fire backs towards roads and constructed fire lines from Lone Pine to Wheatons to keep fire east of the Tule River Reservation community.
 - Mop-up and patrol containment lines from Bond Creek north to DP-26 and along road to Bear Creek.
 - Mop-up and patrol containment lines north of Eagle Creek.
 - Snag roads to increase access and safety for firefighters.

- 7. Special Instructions:**
- Use appropriate suppression tactics based on current and expected fire behavior to defend the values at risk.
 - Follow all COVID-19 protocols and utilize appropriate PPE and social distancing to enhance personnel safety.
 - Resource avoidance areas will be red and white striped flagging combined with any other solid color.
 - Remove all trash and identify any excess supplies that need to be removed. Work with communications for transport needs.
 - Provide accountability of UTVs in your Divisions. E-79, E-337, E-338, E-339, E-341

8. Communications

Name	Ch	Function	Rx Freq	Rx Tone	Tx Freq	Tx Tone	Notes
NIFC C9	2	COMMAND	170.0125N	T5 - 146.2	165.2500N	T5 - 146.2	Mule Peak - Central
NIFC T3	7	TACTICAL	168.6000N	T5 - 146.2	168.6000N	T5 - 146.2	DIV C/P
A/G TAC	14	A/G TAC	167.9875N		167.9875N		ALL DIVISIONS
CALCORD	15	MEDICAL	156.0750N	T6 - 156.7	156.0750N	T6 - 156.7	Medical
GUARD 25	16	AIRGUARD	168.6250N		168.6250N	T1 - 110.9	EMERGENCY
CALCORD	19	MEDICAL	156.0750N	T6 - 156.7	156.0750N	T6 - 156.7	Medical
GUARD 25	20	AIRGUARD	168.6250N		168.6250N	T1 - 110.9	EMERGENCY

9. Prepared by: Name: Harry Kelmanson, Kelly Smyth(t) RESL Signature:

ICS 204 Date/Time: 10/5/2021 2200 Personnel Count: 112

ASSIGNMENT LIST (ICS 204 WF)

CONTROLLED UNCLASSIFIED
INFORMATION//BASIC

1. Incident Name: <p style="text-align: center;">WINDY FIRE</p>	2. Operational Period: Date From: 10/06/21 Date To: 10/07/21 Time From: 0600 Time To: 0600	3. Branch Division <p style="text-align: center;">7 P</p>
--	---	---

4. Operations Personnel:		Page 2 of 2	Papa
Operations Section Chief: Steve Burns	Night Ops: Dave Provencio		
Branch Director: Gary Monday	Branch Safety: Fedrick Woods, Robert Garcia(t)		
Division/Group Supervisor: Louie Orozco, Travis Clendenen(t)	Air Attack: Alex Ihle, Greg Haxby		

5. Resources Assigned:		** Resources Below in Bold are 12 Hour **					
Resource Identifier	ALS	LWD	Leader	Personnel	Request #	Hours	Reporting Location
TFLD RICE		10/9	CORY RICE	1	O-558	0600-1800	PORTERVILLE CAMP
TFLD(T) STEPHENS		10/16	BOBBY STEPHENS	1	O-612	0600-1800	PORTERVILLE CAMP
HEQB SESSOR		10/7	CAMERON SESSOR	1	O-338	0600-1800	PORTERVILLE CAMP
HEQB(T) WHITTEN		10/7	ROB WHITTEN	1	O-339	0600-1800	PORTERVILLE CAMP
FELB SANTOS		10/11	GABRIEL SANTOS	1	O-374	0600-1800	PORTERVILLE CAMP
FAL1 ROBLES		10/8	DANIEL ROBLES	1	O-185	0600-1800	PORTERVILLE CAMP
EMPF FARINELLI		10/18	ALEXANDER FARINELLI	1 E-460 E-605		0600-1800	PORTERVILLE CAMP
EMPF LOOMIS	x	10/9	DANIEL LOOMIS	1	O-232	0600-1800	PORTERVILLE CAMP
EMTF MCGILL		10/10	TRENTON MCGILL	1	O-221	0600-1800	PORTERVILLE CAMP
READ DAVIS (DIV P/R)		10/12	ISAAC DAVIS	1	O-470	0600-1800	PORTERVILLE CAMP
CULS MCDARMENT (DIV P/R)		10/15	LOREN MCDARMENT	1	O-587	0600-1800	PORTERVILLE CAMP

- 6. Work Assignments:**
- Utilize aerial ignition (UAS) to create backing fire towards Wheatons along the fire edge from Bond Creek to Bear Creek.
 - Hold current indirect lines as fire backs towards roads and constructed fire lines from Lone Pine to Wheatons to keep fire east of the Tule River Reservation community.
 - Mop-up and patrol containment lines from Bond Creek north to DP-26 and along road to Bear Creek.
 - Mop-up and patrol containment lines north of Eagle Creek.
 - Snag roads to increase access and safety for firefighters.

- 7. Special Instructions:**
- Use appropriate suppression tactics based on current and expected fire behavior to defend the values at risk.
 - Follow all COVID-19 protocols and utilize appropriate PPE and social distancing to enhance personnel safety.
 - Resource avoidance areas will be red and white striped flagging combined with any other solid color.
 - Remove all trash and identify any excess supplies that need to be removed. Work with communications for transport needs.
 - Provide accountability of UTVs in your Divisions. E-79, E-337, E-338, E-339, E-341

8. Communications

Name	Ch	Function	Rx Freq	Rx Tone	Tx Freq	Tx Tone	Notes
NIFC C9	2	COMMAND	170.0125N	T5 - 146.2	165.2500N	T5 - 146.2	Mule Peak - Central
NIFC T3	7	TACTICAL	168.6000N	T5 - 146.2	168.6000N	T5 - 146.2	DIV C/P
A/G TAC	14	A/G TAC	167.9875N		167.9875N		ALL DIVISIONS
CALCORD	15	MEDICAL	156.0750N	T6 - 156.7	156.0750N	T6 - 156.7	Medical
GUARD 25	16	AIRGUARD	168.6250N		168.6250N	T1 - 110.9	EMERGENCY
CALCORD	19	MEDICAL	156.0750N	T6 - 156.7	156.0750N	T6 - 156.7	Medical
GUARD 25	20	AIRGUARD	168.6250N		168.6250N	T1 - 110.9	EMERGENCY

9. Prepared by: Name: Harry Kelmanson, Kelly Smyth(t) RESL Signature:

ASSIGNMENT LIST (ICS 204 WF)

CONTROLLED UNCLASSIFIED
INFORMATION//BASIC

1. Incident Name: WINDY FIRE	2. Operational Period: Date From: 10/06/21 Date To: 10/07/21 Time From: 0600 Time To: 0600	3. Branch 7	Division R/Y
4. Operations Personnel:		Page 1 of 3	Romeo/Yankee

Operations Section Chief: Steve Burns	Night Ops: Dave Provencio
Branch Director: Gary Monday	Branch Safety: Fedrick Woods, Robert Garcia(t)
Division/Group Supervisor: Mike Smith, Greg Perry(t), Brian Borden(t)	Air Attack: Alex Ihle, Greg Haxby

5. Resources Assigned: ** Resources Below in Bold are 12 Hour **							
Resource Identifier	ALS	LWD	Leader	Personnel	Request #	Hours	Reporting Location
HC2 PVT FRANCO 35		10/15	MIGUEL OROZCO	20	C-35	0600-1800	PORTERVILLE CAMP
HC2 PVT ARDEN 66		10/6	IGNACIO SANTANA	20	C-66	0600-1800	PORTERVILLE CAMP
HC2 PVT FRANCO 67		10/7	NOE FRANCO	20	C-67	0600-1800	PORTERVILLE CAMP
HC2 PVT FRANCO 68		10/7	RAFAEL ALCANTAR	20	C-68	0600-1800	PORTERVILLE CAMP
HC2 PVT LAVA RIVER 9		10/8	JOE LOPEZ	20	C-81	0600-1800	PORTERVILLE CAMP
SMOD SLATE MOUNTAIN		10/7	CESAR TORRES	9	O-450	0600-1800	PORTERVILLE CAMP
ENG3 S/T OES 6848C → DEMOS		10/7	BEN ROSENTHAL	22	E-333	0600-0600	PORTERVILLE CAMP
T/F SEQUIOA						0600-1800	PORTERVILLE CAMP
TFLD(T) REYES		10/7	ANGEL REYES	1	O-363	0600-1800	PORTERVILLE CAMP
HC2 PVT TORRES 31		10/13	EMILIO PERALTA	20	C-31	0600-1800	PORTERVILLE CAMP
HC2 BLACK EAGLES 5		10/13	MICHAEL CUEVAS	22	C-106	0600-1800	PORTERVILLE CAMP
ENG6 CHOCHITI LAKE 83		10/9	DOMINIC ORTIZ	3	E-422	0600-1800	PORTERVILLE CAMP
SKGN PVT SOFT TRACK 474		10/14	JARED COVEY	2	E-474	0600-1800	PORTERVILLE CAMP
FF1 NUTKINS		10/15	BENJAMIN NUTKINS	1	O-478	0600-1800	PORTERVILLE CAMP
FF1 DIAZ		10/13	DAVID DIAZ	1	O-479	0600-1800	PORTERVILLE CAMP
STAGE REMS YOSEMITE		10/11	JACK CRAMER	3	O-481	0600-1800	PORTERVILLE CAMP
STAGE CARE 838 BLS AMBULANCE					E-563	0600-1800	PORTERVILLE CAMP
REAF DORVAL		10/6	DAVID DORVAL	1	O-114	0600-1800	PORTERVILLE CAMP

- 6. Work Assignments:**
- Conduct tactical patrol and mop-up to the extent necessary to keep fire within current containment lines.
 - Continue snagging all access roads and roads used as perimeter control lines to increase safety for firefighters in the area.
 - Mop-up and secure areas within the Black Mountain Sequoia grove.

- 7. Special Instructions:**
- Use appropriate suppression tactics based on current and expected fire behavior to defend the values at risk.
 - Follow all COVID-19 protocols and utilize appropriate PPE and social distancing to enhance personnel safety.
 - Resource avoidance areas will be red and white striped flagging combined with any other solid color.
 - Remove all trash and identify any excess supplies that need to be removed. Work with communications for transport needs.
 - Provide accountability of UTVs in your Divisions.

8. Communications

Name	Ch	Function	Rx Freq	Rx Tone	Tx Freq	Tx Tone	Notes
NIFC C1	1	COMMAND	170.9750N	T5 - 146.2	168.7000N	T5 - 146.2	Jordan - North
NIFC SP 2	12	TACTICAL	169.1000N	T5 - 146.2	169.1000N	T5 - 146.2	DIV R/Y
A/G TAC	14	A/G TAC	167.9875N		167.9875N		ALL DIVISIONS
CALCORD	15	MEDICAL	156.0750N	T6 - 156.7	156.0750N	T6 - 156.7	Medical
GUARD 25	16	AIRGUARD	168.6250N		168.6250N	T1 - 110.9	EMERGENCY
CALCORD	19	MEDICAL	156.0750N	T6 - 156.7	156.0750N	T6 - 156.7	Medical
GUARD 25	20	AIRGUARD	168.6250N		168.6250N	T1 - 110.9	EMERGENCY

9. Prepared by: Name: Harry Kelmanson, Kelly Smyth(t) RESL Signature:

ICS 204 Date/Time: 10/5/2021 2200 Personnel Count: 185

ASSIGNMENT LIST (ICS 204 WF)

CONTROLLED UNCLASSIFIED
INFORMATION//BASIC

1. Incident Name: <p style="text-align: center;">WINDY FIRE</p>	2. Operational Period: Date From: 10/06/21 Date To: 10/07/21 Time From: 0600 Time To: 0600	3. Branch Division <p style="text-align: center;">7 R/Y</p>
--	---	---

Page 2 of 3 Romeo/Yankee

Operations Section Chief: Steve Burns	Night Ops: Dave Provencio
Branch Director: Gary Monday	Branch Safety: Fedrick Woods, Robert Garcia(t)
Division/Group Supervisor: Mike Smith, Greg Perry(t), Brian Borden(t)	Air Attack: Alex Ihle, Greg Haxby

5. Resources Assigned:		** Resources Below in Bold are 12 Hour **					
Resource Identifier	ALS	LWD	Leader	Personnel	Request #	Hours	Reporting Location
REAF URIBE		10/10	RODOLFO URIBE	1	O-323	0600-1800	PORTERVILLE CAMP
REAF SMITH		10/8	SEAN SMITH	1	O-304	0600-1800	PORTERVILLE CAMP
ENG3 PVT CASTLE MOUNTAIN 213		10/12	BLANE FIFIELD	3	E-213	0600-1800	PORTERVILLE CAMP
ENG3 PVT HEK JONES 225		10/6	BRINN JONES	3	E-225	0600-1800	PORTERVILLE CAMP
ENG3 PVT GRAYBACK 226		10/6	CHARLES PALMER	3	E-226	0600-1800	PORTERVILLE CAMP
ENG3 CHUMASH CHU 801 *IA*		10/12	RICHARD GARCIA	5	E-481	0600-1800	PORTERVILLE CAMP
ENG3 LNF 316		10/15	JOHN PIERCE	5	E-580	0600-1800	PORTERVILLE CAMP
ENG3 LNF 336		10/15	LUKE MADDEN	4	E-581	0600-1800	PORTERVILLE CAMP
ENG3 LNF 381		10/15	FERNANDO ESTRADA	5	E-582	0600-1800	PORTERVILLE CAMP
ENG5 PVT WEST COAST 220		10/6	NICK MILLER	3	E-220	0600-1800	PORTERVILLE CAMP
ENG6 PVT ROCKY POINT 116		10/17	KC FRYE	3	E-120	0600-1800	PORTERVILLE CAMP
ENG6 PVT COHO FORESTRY 224		10/6	JUSTIN OTT	2	E-224	0600-1800	PORTERVILLE CAMP
ENG6 CHUMASH CHU 802 *IA*		10/13	NELSON PALATO	3	E-482	0600-1800	PORTERVILLE CAMP
WTT1 PVT KB WATERTRUCK 56		10/17	KYLE LAWLESS	1	E-56	0600-1800	PORTERVILLE CAMP
WTT1 WINDSOR FD 320		10/10	NATHAN BERRYMAN	2	E-320	0600-1800	PORTERVILLE CAMP
WTS2 PVT HOME STYLE 57		10/11	PETE DAHL-BREDINE	1	E-57	0600-1800	PORTERVILLE CAMP
WTS3 PVT DUERR 447		10/14	RAY ARELLANO	1	E-447	0600-1800	PORTERVILLE CAMP
TFLD POWELL		10/21	SETH POWELL	1	O-551	0600-1800	PORTERVILLE CAMP

6. Work Assignments:

- Conduct tactical patrol and mop-up to the extent necessary to keep fire within current containment lines.
- Continue snagging all access roads and roads used as perimeter control lines to increase safety for firefighters in the area.
- Mop-up and secure areas within the Black Mountain Sequoia grove.

7. Special Instructions:

- Use appropriate suppression tactics based on current and expected fire behavior to defend the values at risk.
- Follow all COVID-19 protocols and utilize appropriate PPE and social distancing to enhance personnel safety.
- Resource avoidance areas will be red and white striped flagging combined with any other solid color.
- Remove all trash and identify any excess supplies that need to be removed. Work with communications for transport needs.
- Provide accountability of UTVs in your Divisions.

8. Communications							
Name	Ch	Function	Rx Freq	Rx Tone	Tx Freq	Tx Tone	Notes
NIFC C1	1	COMMAND	170.9750N	T5 - 146.2	168.7000N	T5 - 146.2	Jordan - North
NIFC SP 2	12	TACTICAL	169.1000N	T5 - 146.2	169.1000N	T5 - 146.2	DIV R/Y
A/G TAC	14	A/G TAC	167.9875N		167.9875N		ALL DIVISIONS
CALCORD	15	MEDICAL	156.0750N	T6 - 156.7	156.0750N	T6 - 156.7	Medical
GUARD 25	16	AIRGUARD	168.6250N		168.6250N	T1 - 110.9	EMERGENCY
CALCORD	19	MEDICAL	156.0750N	T6 - 156.7	156.0750N	T6 - 156.7	Medical
GUARD 25	20	AIRGUARD	168.6250N		168.6250N	T1 - 110.9	EMERGENCY

9. Prepared by: Name: Harry Kelmanson, Kelly Smyth(t) RESL

Signature: _____
 ICS 204 Date/Time: 10/5/2021 2200 Personnel Count: 47

ASSIGNMENT LIST (ICS 204 WF)

CONTROLLED UNCLASSIFIED
INFORMATION//BASIC

1. Incident Name: <p style="text-align: center;">WINDY FIRE</p>	2. Operational Period: Date From: 10/06/21 Date To: 10/07/21 Time From: 0600 Time To: 0600	3. Branch Division <p style="text-align: center;">7 R/Y</p> <p style="text-align: right;">Page 3 of 3 Romeo/Yankee</p>
--	---	---

4. Operations Personnel:	
Operations Section Chief: Steve Burns	Night Ops: Dave Provencio
Branch Director: Gary Monday	Branch Safety: Fedrick Woods, Robert Garcia(t)
Division/Group Supervisor: Mike Smith, Greg Perry(t), Brian Borden(t)	Air Attack: Alex Ihle, Greg Haxby

5. Resources Assigned:							
** Resources Below in Bold are 12 Hour **							
Resource Identifier	ALS	LWD	Leader	Personnel	Request #	Hours	Reporting Location
TFLD PROTAS		10/14	BEVIN PROTAS	1	O-544	0600-1800	PORTVILLE CAMP
FAL1 BELL		10/15	RANDALL BELL	1	O-307	0600-1800	PORTVILLE CAMP
EMPF COOPER	x	10/15	MICHAEL COOPER	1	E-550	0600-1800	PORTVILLE CAMP
EMTF SCHWEIGERT		10/15	GARRETT SCHWEIGERT	1	E-550	0600-1800	PORTVILLE CAMP
READ DAVIS (DIV P/R)		10/12	ISAAC DAVIS	1	O-470	0600-1800	PORTVILLE CAMP
CULS MCDARMENT (DIV P/R)		10/15	LOREN MCDARMENT	1	O-587	0600-1800	PORTVILLE CAMP

6. Work Assignments:

- Conduct tactical patrol and mop-up to the extent necessary to keep fire within current containment lines.
- Continue snagging all access roads and roads used as perimeter control lines to increase safety for firefighters in the area.
- Mop-up and secure areas within the Black Mountain Sequoia grove.

7. Special Instructions:

- Use appropriate suppression tactics based on current and expected fire behavior to defend the values at risk.
- Follow all COVID-19 protocols and utilize appropriate PPE and social distancing to enhance personnel safety.
- Resource avoidance areas will be red and white striped flagging combined with any other solid color.
- Remove all trash and identify any excess supplies that need to be removed. Work with communications for transport needs.
- Provide accountability of UTVs in your Divisions.


8. Communications							
Name	Ch	Function	Rx Freq	Rx Tone	Tx Freq	Tx Tone	Notes
NIFC C1	1	COMMAND	170.9750N	T5 - 146.2	168.7000N	T5 - 146.2	Jordan - North
NIFC SP 2	12	TACTICAL	169.1000N	T5 - 146.2	169.1000N	T5 - 146.2	DIV R/Y
A/G TAC	14	A/G TAC	167.9875N		167.9875N		ALL DIVISIONS
CALCORD	15	MEDICAL	156.0750N	T6 - 156.7	156.0750N	T6 - 156.7	Medical
GUARD 25	16	AIRGUARD	168.6250N		168.6250N	T1 - 110.9	EMERGENCY
CALCORD	19	MEDICAL	156.0750N	T6 - 156.7	156.0750N	T6 - 156.7	Medical
GUARD 25	20	AIRGUARD	168.6250N		168.6250N	T1 - 110.9	EMERGENCY

9. Prepared by: Name: Harry Kelmanson, Kelly Smyth(t) RESL Signature:

ICS 204 Date/Time: 10/5/2021 2200 Personnel Count: 6

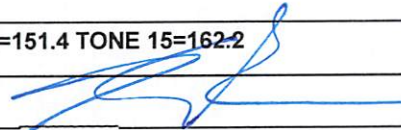
ICS 205 - INCIDENT RADIO COMMUNICATIONS PLAN

CONTROLLED UNCLASSIFIED
INFORMATION//BASIC

1. Incident Name: <p style="text-align: center;">WINDY FIRE Incident Channels</p>			2. Date/Time Prepared Date: 10/05/2021 Time: 1930			3. Operational Period: Date From: 10/06/21 Date To: 10/07/21 Time From: 0600 Time To: 0600			
4. Communications									
Ch#	Function	Name	Assigned To	Rx Freq	Rx Tone	Tx Freq	Tx Tone	Notes	
1	COMMAND	NIFC C1	COMMAND	170.9750N	T5 - 146.2	168.7000N	T5 - 146.2	Jordan - North	
2	COMMAND	NIFC C9	COMMAND	170.0125N	T5 - 146.2	165.2500N	T5 - 146.2	Mule Peak - Central	
3	COMMAND	NIFC C12	COMMAND	173.0375N	T5 - 146.2	167.3250N	T5 - 146.2	Tobias Peak - South	
4	COMMAND	NIFC C28	COMMAND	170.0750N	T5 - 146.2	164.0125N	T5 - 146.2	Baker Peak Lookout - Southeast	
5	COMMAND	NIFCC130	COMMAND	172.4375N	T5 - 146.2	169.2875N	T5 - 146.2	Sherman Peak - East	
6	TACTICAL	NIFC T1	TACTICAL	168.0500N	T5 - 146.2	168.0500N	T5 - 146.2	DIV A-NIGHT A	
7	TACTICAL	NIFC T3	TACTICAL	168.6000N	T5 - 146.2	168.6000N	T5 - 146.2	DIV C/P	
8	TACTICAL	NIFC T5	TACTICAL	166.7250N	T5 - 146.2	166.7250N	T5 - 146.2	DIV D	
9	TACTICAL	NIFC T6	TACTICAL	166.7750N	T5 - 146.2	166.7750N	T5 - 146.2	DIV E	
10	TACTICAL	NIFC T7	TACTICAL	168.2500N	T5 - 146.2	168.2500N	T5 - 146.2	DIV J	
11	TACTICAL	NIFC SP 1	TACTICAL	166.6000N	T5 - 146.2	166.6000N	T5 - 146.2	DIV K/L	
12	TACTICAL	NIFC SP 2	TACTICAL	169.1000N	T5 - 146.2	169.1000N	T5 - 146.2	DIV R/Y	
13	A/G CMD	A/G CMD	A/G CMD	166.6125N		166.6125N		ALL DIVISIONS	
14	A/G TAC	A/G TAC	A/G TAC	167.9875N		167.9875N		ALL DIVISIONS	
15	MEDICAL	CALCORD	MEDICAL	156.0750N	T6 - 156.7	156.0750N	T6 - 156.7	Medical	
16	AIRGUARD	GUARD 25	AIRGUARD	168.6250N		168.6250N	T1 - 110.9	EMERGENCY	
17									
18									
19	MEDICAL	CALCORD	ALL DIVS	156.0750N	T6 - 156.7	156.0750N	T6 - 156.7	Medical	
20	AIRGUARD	GUARD 25	ALL DIVS	168.6250N		168.6250N	T1 - 110.9	EMERGENCY	
5. Special Instructions									
WINDY COMMUNICATIONS: (213) 503-4322									
6. Prepared by (Communications Unit Leader): Name: Ken Earle						Signature: 			
ICS 205 - CONTROLLED UNCLASSIFIED INFORMATION//BASIC					NIMS IAP	Date/Time: 10/05/21 1930			

ICS 205 - INCIDENT RADIO COMMUNICATIONS PLAN

CONTROLLED UNCLASSIFIED INFORMATION//BASIC

1. Incident Name: WINDY FIRE IA GROUP			2. Date/Time Prepared Date: 10/05/2021 Time: 1930			3. Operational Period: Date From: 10/06/21 Date To: 10/07/21 Time From: 0600 Time To: 0600		
4. Communications								
Ch#	Function	Name	Assigned To	Rx Freq	Rx Tone	Tx Freq	Tx Tone	Notes
1	COMMAND	SQF CH 4	IA CMND	170.5500N		166.0000N	OST	TONE - 8, 9, 10
2	IA COMMAND	TUU LOC	IA CMND	151.1900N	110.9	159.2250N	OST	TONE - 14, 15
3	TACTICAL	NIFC T2	IA TACTICAL	168.2000N		168.2000N		IA TACTICAL
4	IA TACTICAL	CAL T5	IA TACTICAL	151.2500N	T16 - 192.8	151.2500N	T16 - 192.8	IA TACTICAL
5	IA TACTICAL	CAL T8	IA TACTICAL	151.3700N	T16 - 192.8	151.3700N	T16 - 192.8	IA TACTICAL
6		BLANK						
7		BLANK						
8		BLANK						
9		BLANK						
10		BLANK						
11		BLANK						
12	CALFIRE AIR TO GROUND	CA A/G 2		159.2625N	T16 - 192.8	159.2625N	T16 - 192.8	
13	FED AIR TO GROUND	FS A/G41	IA A/G	167.4750N		167.4750N		PRIMARY IA A/G
14	FED AIR TO GROUND	FS A/G24	IA A/G	168.6375N		168.6375N		SECONDARY IA A/G
15	MEDICAL	CALCORD	MEDICAL	156.0750N	T6 - 156.7	156.0750N	T6 - 156.7	MEDICAL
16	AIRGUARD	GUARD 25	EMERGENCY	168.6250N		168.6250N	T1 - 110.9	AIRGUARD
17								
18								
19	MEDICAL	CALCORD	ALL DIVS	156.0750N	T6 - 156.7	156.0750N	T6 - 156.7	MEDICAL
20	AIRGUARD	GUARD 25	EMERGENCY	168.6250N		168.6250N	T1 - 110.9	AIRGUARD
5. Special Instructions								
FOR CHANNEL 1 TONE 8=103.5 TONE 9=100.0 TONE 10=107.2				FOR CHANNEL 2 TONE 14=151.4 TONE 15=162.2				
6. Prepared by (Communications Unit Leader): Name: Ken Earle						Signature: 		
ICS 205 - CONTROLLED UNCLASSIFIED INFORMATION//BASIC				NIMS IAP	Date/Time: 10/05/21 1930			

AIR OPERATIONS SUMMARY

PREPARED BY: Sarah Culhane 

PREPARED DATE/TIME: 10/05/2021 1900

1. INCIDENT NAME: WINDY	2. OPERATIONAL PERIOD: 10/06/2021	SUNRISE: 06:54	SUNSET: 18:33
--------------------------------	-----------------------------------	----------------	---------------

3. REMARKS (Safety Notes, Hazards, Air Operations Special Equipment, etc.):

1. Assess mission complexity and the Benefit vs Risk of the mission.
2. Ensure visibility and winds are adequate to safely conduct flight operations.
3. Ensure safe vertical & horizontal separation between aircraft especially in smoky conditions.
4. Utilize check points and call in and out of the dips.
5. If you see a UAS on your division report it up the chain of command.
6. Smoky conditions can hamper our aviation operations. Adhere to visibility limitations, and DO NOT be pressured into accepting a mission that you know, or feel is unsafe!
7. Helibase COVID-19 BMP, Manager/Pilots/Crewmembers maintain adequate separation for briefing with mask.
8. Powerline safety, hazard maps make then known.

4. MEDEVAC A/C:

Review medivac
8 line with all crewmembers

Review:
MISHAP GUIDE

5. TFR: 1/3109 ZLA (A-214)

TFR: 1/3128 ZOA (A-213)
TFR Freq: 119.075

Altitude:13,000 MSL

<http://tfr.faa.gov/tfr2/list.html>


6. PERSONNEL	Phone	7. FREQUENCIES	AM	FM	8. FIXED-WING	# Avail / Type/ Make-Model / FAA N /Base(s)
AOBD: JOHN KEESEE AOBD(t): SARAH CULHANE	805-551-6422 505-206-7665	AIR/AIR TFR:	119.075		ATGS Aircraft	By Request: N844CH @ Porterville (PTV) N586DV @ Santa Maria (SMX) PORTERVILLE AIR ATTACK BASE: 559-789-0190
ASGS: RAY UCHA ASGS(t): COLE WALLACE ASGS(t): JORGE GARCIA	951-903-4136 907-204-1444 559-719-8784	AIR/AIR West: AIR/AIR East:	126.6750 121.8250			
PORTERVILLE HELIBASE HEBM: DAVID CARRERA HEBM(t): JACK TOWNSEND	760-883-9110 208-789-1011	Air Tactics:		169.2000		CALL SIGN: Medivac w/Hoist: KERN CO. H407 TYPE 2 AIRCRAFT Available 24 hours out of Visalia, CA See medical plan.
KERNVILLE HELIBASE HEBM: MATT CASADA HEBM(t): GEOFF GILLESPIE	760-379-6995 760-376-3781 EXT 626	AIR/GROUND: Command (Ch 13) Tactical (Ch 14)		166.6125 167.9875		
ATGS: GREG HAXBY @ PTV ATGS: ALEX IHLE @ SMX	208-709-2459 805-364-1002	RAMP PTV TOWER	128.525			
UASP: Joe Don Morton UAS Type 3 FA3YEH9TTE UR33	907-388-1050	DECK FREQ:		163.6125	Other:	TULE MRB 36 02.8935 118 45.2440 AERIAL FIRE ANDREW O'BRIEN 239-848-7504 FAIRVIEW MRB 35 54.478 118 28.825 LINDSEY MOBILE RETARDANT FAA TOWER at Porterville Airport
TRACY DOTT MANAGER CL-415: S-261, S-263	805-722-0170	CALCORD		156.0750 156.7 - TONE 6		

9. HELICOPTERS

FAA N#	TY	MAKE/MODEL	BASE	AVAIL	START	REMARKS
620TJ	1	BLACK HAWK (A-4)	PTV	0800	0830	BUCKET
2FH	1	BLACK HAWK (A-142)	PTV	0800	0830	BUCKET
889AB	1	BLACK HAWK (A-143)	PTV	0800	0830	BUCKET
72OHT	1	CH54 (A-52)	PTV	0800	0830	TANK
718HT	1	CH54 (A-53)	PTV	0800	0830	TANK
NCF-PUK	1	SUPER PUMA (A-257)	PTV	0800	0830	BUCKET
H-534 (205HQ)	2	205A1 ++ (A-68)	PTV	0800	0830	BUCKET
H-522 (456TA)	2	205A1 ++ (A-69)	PTV	0800	0830	BUCKET
509 (109Z)	2	Cobra (A-244)	PTV	0800	0830	HLCO/INTEL
H-525 (352SA)	3	A Star B3 (A-71)	PTV	0800	0830	BUCKET
319WA	1	K-MAX (A-141)	KERVILLE	0800	0830	BUCKET
699RH	1	K-MAX (A-185)	KERVILLE	0800	0830	BUCKET
161KA	1	K-MAX (A-186)	KERVILLE	0800	0830	BUCKET
526MW	1	K-MAX (A-232)	KERVILLE	0800	0830	BUCKET
66HJ	2	205++ (A-54)	KERVILLE	0800	0830	BUCKET
H-523 (304HA)	2	205++ (A-131)	KERVILLE	0800	0830	BUCKET
351FW	3	A Star B2 (A-230)	KERVILLE	0800	0830	BUCKET

INCIDENT RISK ANALYSIS

ICS (215A) DAY/NIGHT SHIFT

BR/DV	HAZARDOUS ACTIONS – CONDITIONS	MITIGATIONS – WARNINGS – REMEDIES
ALL	TRAFFIC HAZARDS AND DRIVING	<ul style="list-style-type: none"> • Many roads are narrow and mid-slope, with soft shoulders. Allow heavy vehicles to pass on uphill side. Use spotters when backing or turning around. • Practice "Defensive Driving" techniques. Assume other drivers are fatigued and complacent. • Use warning lights when working on roads or traveling in smoke. • Drive at or below posted speed limits. • Use chock blocks, turn wheels into hill. • Be alert for wildlife. Dusk to Dawn pose the greatest potential for accidents.
ALL	HAZARD / DANGER TREES	<ul style="list-style-type: none"> • Follow Hazard Tree Safety Guidelines (IRPG p.22.). • Limit number of personnel around snags and their exposure time. • Fallers must be qualified for the trees being felled. • Be alert around hazard trees during wind events, even green trees. • The hazard zone extends a minimum of 2½ tree lengths. • Avoid parking vehicles or taking breaks under or near hazard trees.
ALL	FIRE BEHAVIOR	<ul style="list-style-type: none"> • Are you seeing what we have predicted? • Conduct thorough assessments before starting work. • Ensure LCES is in place. • Plan & communicate your exit strategy with your crew and adjacent resources. • Provide additional briefing for new resources and maintain communications. • Outflow winds from thunderstorms could negatively affect fire behavior.
ALL	STEEP TERRAIN & ROLLING DEBRIS	<ul style="list-style-type: none"> • Maintain 8'-10' spacing when working & walking. • Do not work above any personnel. • Evaluate necessity to send personnel in areas with limited access.
ALL	WORKING NEAR HEAVY EQUIPMENT	<ul style="list-style-type: none"> • Never work below any heavy equipment. • Only approach after making positive eye contact with operator and motioned to proceed. • Maintain a safe working distance <50' in brush and 2.5 times the height of trees in timber. • Night operations increase risk. Maintain a high visibility presence (headlamps, glow sticks, reflective clothing if available).
ALL	FIRING OPERATIONS	<ul style="list-style-type: none"> • Only personnel trained in the use of each device will be authorized to use firing equipment. • Ensure that all personnel are briefed and prepared for firing and holding operations. • Ensure that all ground and Ariel ignition plans are approved and signed by the IC prior to implementation.
ALL	COMMUNICATIONS	<ul style="list-style-type: none"> • Share your Situational Awareness (hazards, changes, etc.) to those who also have a need. • Answer questions when asked by others. Ask for intel when you do not know the plan. • Ensure all personnel are familiar with the incident and IA communications plans.
ALL	HEAT RELATED ILLNESS	<ul style="list-style-type: none"> • Drink 2 to 1 water to sports drinks. • Take frequent breaks, minimum of 10 minutes every hour. • Recognize symptoms of HEAT RELATED ILLNESS which include low energy, cramping, headaches, dizziness, poor rest, poor eating habits, hot skin, and lack of sweating.
ALL	INDIRECT LINE CONSTRUCTION	<ul style="list-style-type: none"> • Establish and maintain LCES. • Locate line in favorable location, lighter fuels, and gentler topography when possible. • Utilize natural or existing barriers.
ALL	AIR OPERATIONS	<ul style="list-style-type: none"> • Follow "Aviation Watch-Out Situations" on page 46, IRPG. • Do not plan on air resources for tactical support or medical transportation. • Refer to page 58, IRPG for directing bucket drops. • Ensure positive communication with all air resources.
<p>INCIDENT NAME:</p> <p>Windy Fire</p>		<p>OPERATIONAL PERIOD:</p> <p>0600 – 0600</p> <p>Oct 6 – Oct 7, 2021</p> <p>Date/Time Prepared: 10/05/2021 – 1400 hrs</p> 



Covid Response

Help stop the spread of COVID-19

DO YOU HAVE ANY OF THESE SYMPTOMS?

Fever, Chills, Cough, Shortness of Breath, Muscle Pain, Sore Throat or Loss of Taste or Smell, Positive test for COVID 19?

DO NOT ENTER THE ICP OR CAMPS

If in doubt about any of these symptoms, consult Windy Medical between 0700 and 2200 at 518-832-0505

- Employee notifies supervisor of presumed or confirmed COVID-19 Symptoms.
- Affected employee advised to seek evaluation by Incident Medical Unit .
- Medical Unit will evaluate and determine need for evaluation and care.
- Close contact assessment and isolation as necessary. Decontamination of workspace/vehicle as necessary.
- IMT will notify and coordinate with COVID Advisor, Home Unit Agency Representative and Public Health Department.

Windy COVID Advisors:

Dawn Cordova

505-203-8441

Keith Fox

559-920-8276

Adam Cochran-USDI

(BIA, BLM, FWS, NPS)

775-455-6832

WILDLAND FIRE COVID-19 SCREENING TOOL

Today or in the past 24 hours, have you had any of the following symptoms¹?

Symptom
Cough more than expected?
Shortness of breath or difficulty breathing?
Fever? Chills?
Muscle pain, outside your normal for firefighting?
Sore throat?
New loss of taste or smell?
Fatigue, outside your normal for firefighting?
Headache, outside your normal for firefighting?
Congestion or runny nose, outside your normal for firefighting?
Nausea or vomiting?
Diarrhea?
<i>* Take temperature with no-touch thermometer, if available *</i>

Instructions for Screening

Item	What to Do
If resource has a cough that is more than expected, shortness of breath or difficulty breathing, or any other symptoms listed.	DO NOT MOBILIZE
At Entries: Consider adequate number of personnel needed for screening. Although medical personnel are ideal, screeners do not have to be medically trained. If resource has cough, shortness of breath or difficulty breathing, or any other listed symptoms including fever (over 100.4) at entry.	DO NOT ANNOUNCE Ask individual to step aside and follow the steps below.

Steps to follow
Escort symptomatic individual to isolation area.
Isolation support personnel should begin documentation.
Have symptomatic individual contact Supervisor for further direction.
Notify public health officials.
Have individual transported as appropriate.
Protect and secure any collected Personal Identifiable Information (PII) or Personal Health Information (PHI).

¹ Symptoms of Coronavirus

<https://www.cdc.gov/coronavirus/2019-ncov/symptoms-testing/symptoms.html>

WINDY FIRE
Finance Process
CA-TIA-003058
PAN9QV (1522)

TIME:

Please send Shift Ticket / CTR to 2021.windy.finance@firenet.gov, using format showing under New Resources.

Hard copies can be dropped in the finance box at briefing. If there isn't anybody available to talk with and you are checking in or demobing from the incident or have questions for Finance, please call one of the following numbers:

CAMP 9 / JOHNSONDALE	PORTERVILLE / TULARE / SPIKE	COST / FSC	COMP/CLAIMS
949-591-4149	949-591-4125	949-591-4131	928-486-5295

Contract Equipment be sure to note any down time in the remarks on the shift ticket.

Approving Officials for CTRs and Shift Tickets be sure to write legibly. If we can't read your name, please print it under your signature.

FOR NEW RESOURCES CHECKING IN:

Please email all documents to the email account 2021.windy.finance@firenet.gov

Email Subject Line: TIME (or CTR, EQUIPMENT, SHIFT TICKET)/Resource Order No./ Resource Name/Position Code – in the subject line with your information

(Example: TIME/O-200/SBear/Safety)

Email all documents that pertain to your assignment:

Agency Overhead	Agency ADs / EFFs	VIPR Resources	Contract / Agency Crews	Cooperators
Resource Order Crew Time Reports (CTRs)	Resource Order Casual Hire Form CTRs	Resource Order VIPR Agreement Schedule of Items Inspections Shift Tickets	Resource Order Manifest Agreement / Contract Schedule of Items Inspections CTRs	Resource Order Agreement Shift Tickets / CTRs

Submit Equipment Shift Tickets or Crew Time Reports (CTRs) daily.

Please include your email address and phone number in the body of the email when sending your documents.

COMP / CLAIMS:

Elaine Downing COMP Unit Leader 928-486-5295 Elaine_Downing@firenet.gov

For federal employees, if you are injured, please contact the COMP UL for the Authorization for Treatment (CA-16). We can issue the form directly to the hospital or clinic, but we need full names and SSN for the required forms prior to being able to do that. The employee or supervisor should contact COMP/CLAIMS as soon as possible or upon arrival at the hospital, whichever is convenient.

For claims there are different forms needed based on the circumstances of the property loss or damage. Please contact COMP UL first to find out which forms are appropriate for your situation, and what additional information might be needed. This will expedite the process.

Unserviceable items must be turned into COMP if you are unable to replace at Supply. If items are lost or damaged on the fire line, the fire suppression module must provide a copy of the module's standard inventory with the documentation of broken or unserviceable items. For replacement of non-cache items, if the replacement request is approved, the reimbursement amount will be limited to the cache equivalent value. (PMS 902 Chapter 30).

Replacement for normal wear and tear will be through your home unit.

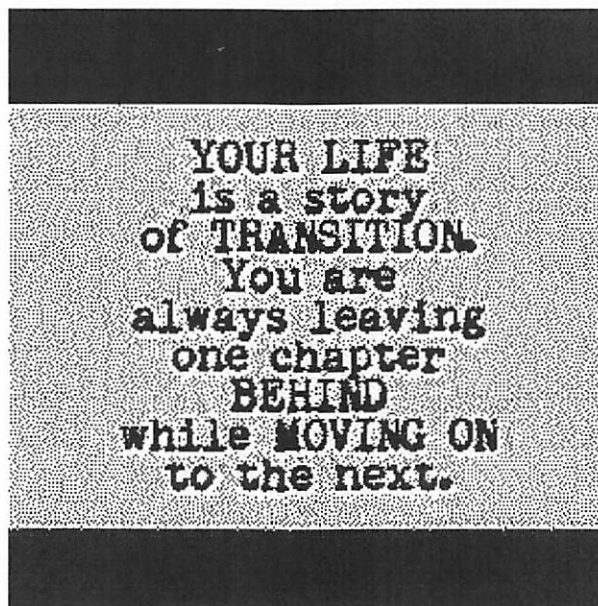
Motor Vehicle Accident	Property Loss or Damage of items that cannot be replaced in Supply
<i>SF-91, Motor Vehicle Accident SF-94 Witness Statement (if app)</i>	<i>TEAM 5 MODIFIED 289</i>

Human Resource Message



Transition

Transition is the process or a period of change from one state to another. This fire behavior and growth has transitioned across the landscape. As California Team 5 transitions with Great Basin Team 6, there will be some fluid changes. Embrace the changes, ideas, and actions of others as we all are looking towards the same goals. Please focus on the good work of those around you. Do your part to include everyone coming in by providing your knowledge and experience in this environment.



Andrea Cabida HRSP- 707-330-9939; andrea.cabida@usda.gov;



Public Information

General Information Line: 559-791-8827

Media Information Line: (213) 503-4243

Email: 2021.windy@firenet.gov

Facebook: @SequoiaNF

Lost and Found

Please Call PIO (559) 791-8827

Outgoing Mail

PIO-Fairgrounds Expo Building-Porterville

PIO-Camp 9-Kernville

Fire Videos and Photos Needed

**Proper PPE must be worn in all photos. Hold camera horizontal for best video.
Scan the QR Code below for information or send to 2021.windy@firenet.gov**

SCAN ME

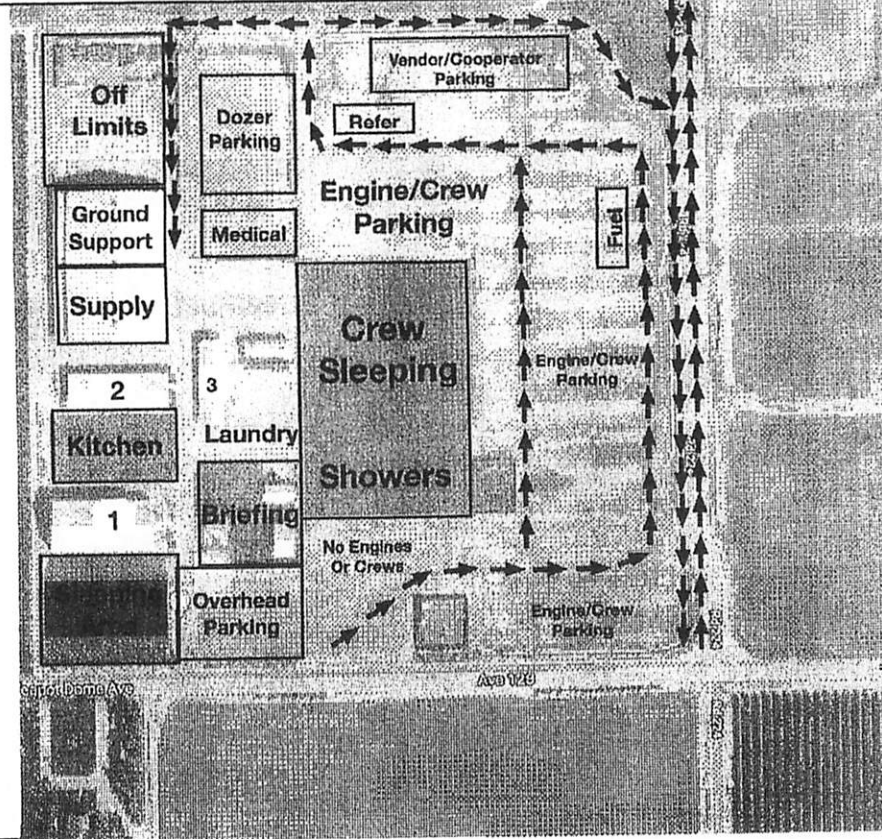


Porterville Fairgrounds Camp Map

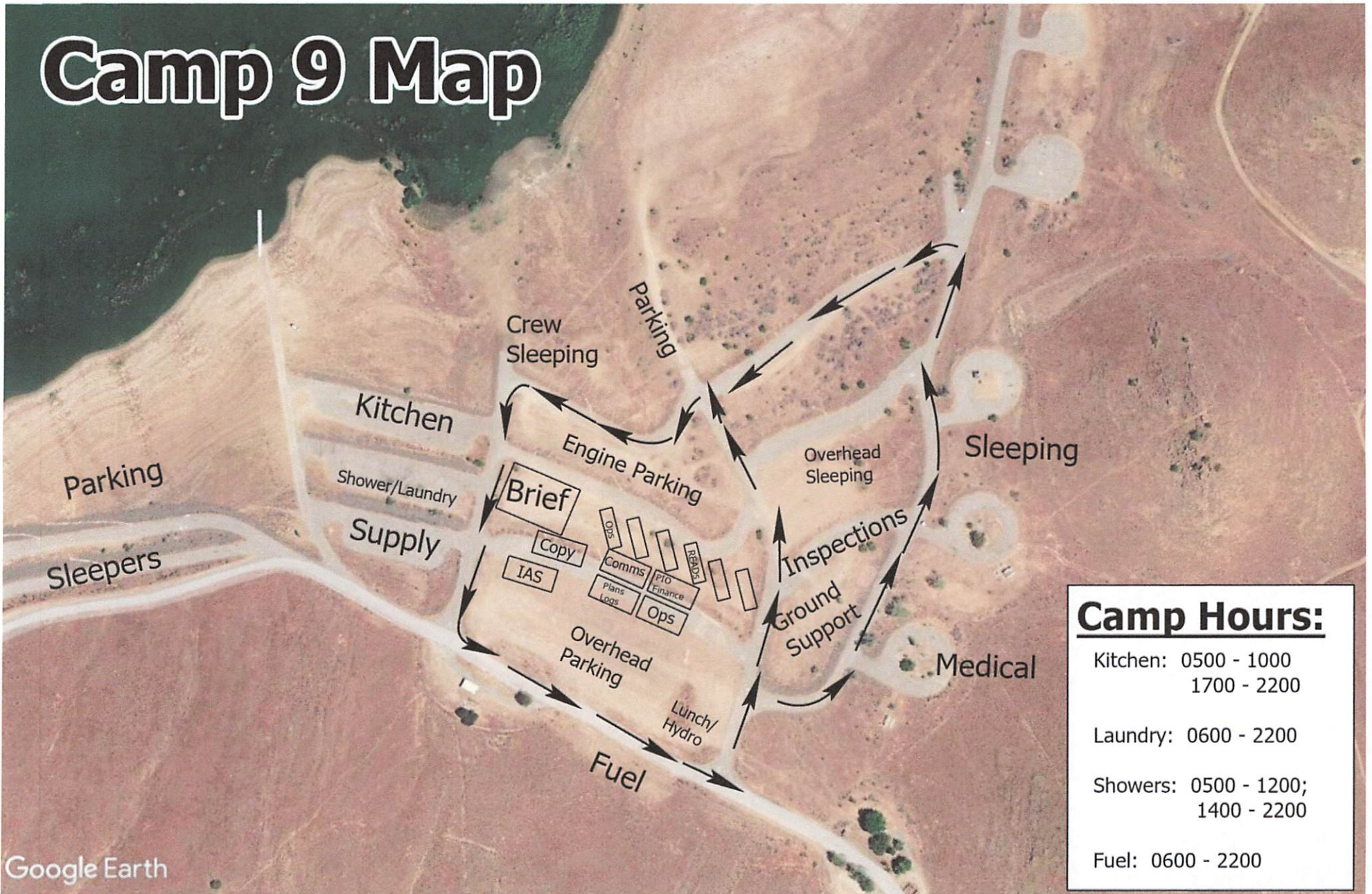
2700 W. Teapot Dome Ave.
Porterville, CA 93257

Sleep
Trailers/
Tent
Camping

1. Administration
2. Logistics/Food
3. Facilities/Comms



Camp 9 Map



Camp Hours:	
Kitchen:	0500 - 1000 1700 - 2200
Laundry:	0600 - 2200
Showers:	0500 - 1200; 1400 - 2200
Fuel:	0600 - 2200

Windy Fire-Incident Training Program

TNSP's are available on this incident to assist with your training assignment needs and documentation.

To receive documented incident credit for your assignment, scan the QR Code or click on the link below to access and complete the Trainee Registration Form. Once registered you will receive additional instructions via text.

Registering your training assignment as early as possible on the incident is to your benefit!

ICP - Brad Smith (TNSP) -

(209) 770-4809, bradley_smith@firenet.gov

Porterville Base Camp - Matthew Van Hagen (TNSPt) -

(209) 769-1777, vanhagenm@cityofmerced.org

[Windy Fire - Incident Training Program Registration](#)



Windy Fire Demob Unit

Demob Day Approaching?

As your demob day approaches pay attention to the IAP Demob Schedule.

Alert DMOB if there are issues. We can only fix things we know about.

949-591-4133

- **Contact FINANCE 24 hours prior to give them a heads-up you are departing:**
 - Phone: 949-591-4131 or 949-591-4149 (Finance Information phone only).**
 - Turn in any outstanding or travel CTRs/Shift Tickets. Make sure they're SIGNED.
 - Confirm no missing financial documentation. See Finance Page for full information.

Need AIR TRAVEL to get home?

IF YOUR RETURN METHOD OF TRAVEL IS BY AIR, CONTACT DMOB 72-HOURS AHEAD OF YOUR LAST WORK DAY. AIR TRAVEL PHONE: 949-591-4133

Extensions and Crew Swaps All Equipment, "NO PVT CREWS"

Questions call 949-591-4144

Extensions

1. Obtain form from Check-in/Demob station in the Expo building.
2. Fill out the top section.
3. Take it to your DIVS for approval signature.
4. Get your Home Unit Supervisor's approval signature.
 - a. If your home unit supervisor isn't available to sign, write "approved by phone" and include the phone number.
5. If taking R&R, include the R&R dates and the Return date.
6. Return the completed form to Check-in/Demob station where you picked it up.

Crew Swaps

1. Include the names and phone number of crew members.
2. Include the date and length of the swap.
3. Get your DIVS signature.
4. Return it to the Check-in/Demob station.

Windy Fire Demob Instructions

On your Day of Demob - **STEP 1:**

Contact DMOB: 949-591-4133 to activate your virtual Check-Out Sheet.

The DMOB can answer your questions about the process and pass on any updates.

You will not be able to proceed if you have not talked to the DMOB.

If this call is not made, any steps below you may think you have completed are, in fact, void.

STEP 2:

SUPPLY – see in-person to return issued gear and left over supplies.

If you have nothing to turn in, Demob will contact supply and clear you.

COMMUNICATIONS – see in-person to return in any commo gear (Radios, etc.)

If nothing to turn in, Demob will make contact and clear you.

GROUND SUPPORT – see in-person to return pool NERV Rentals, get an inspection, etc.

Be sure to take a picture of ground support paperwork and text it to Demob - 949-591-4133.

If you have no business with GS, Demob will clear you. **Ground Support – 949-591-4143**

Other Considerations:

If you are a Trainer or a Trainee, make sure you have closed out with the Training Specialist.

Turn in any Unit Logs and Evaluations to at the Check-in table.

STEP 3:

Contact FINANCE to finalize your paperwork in person at the Porterville Finance table or by phone.

Over the phone – leave your Name, RO #, Phone # & email

They will call you when your timesheets are ready to sign .

Please Call: 949-591-4149 or 949-591-4125

Receive your signed OF-288 or OF-286 BEFORE starting travel.

STEP 4:

Contact DMOB at 949-591-4133 DMOB will verify check-out completion.

Be prepared to talk about your actual departure date and time, your anticipated arrival date and time,

And where you will be staying if travel includes overnight stops away from fire camp.

You must complete all four steps to be released in IROC.

Use the QR code on the front cover of the IAP to get the latest edition of these instructions. Ver 10/01



Windy Fire Demob Schedule

Only You can prevent Demobilization



FREE OFFER – Get your Extension or Crew Swap set up “NO PVT CREWS”

Call the Check-In shop – 949-591-4144

REQ#	KIND	NAME	DEMOB CITY	ST	TVL METH	DMOB DATE	DPART TIME
C-51	CC	VISTA 1	VISTA	CA	AOV	OCT 06	06:30
C-64	HC2	RANCHERIA - 81	SONORA	CA	AOV	OCT 06	06:40
C-70	HC2	WACCC - 12 - 065 - FRANCO F003	MEDFORD	OR	POV	OCT 06	06:50
C-78	HC2	IDBDC - 16 - 047 - FRANCO - F018	NYSSA	OR	POV	OCT 06	07:00
E-106	ES3	ENGINE S/T - T3 - 1566C	CAMARILLO	CA	AOV	OCT 06	07:10
E-126	WTS2	TENDER, WATER (SUPPORT) - T2 - 49ER	ANGELS CAMP	CA	POV	OCT 06	07:20
E-184	PU	TRANSPORTATION - PICKUP - TSA - 3B	VALE	OR	POV	OCT 06	07:30
E-199	ENG4	THUNDERBOLT 12	JOHN DAY	OR	POV	OCT 06	07:40
E-203	ENG3	CA-NOD 8337	CEDARVILLE	CA	AOV	OCT 06	07:50
E-206	ENG6	LONE WOLF 206	WALLA WALLA	WA	POV	OCT 06	08:00
E-212	ENG6	ENGINE - T6 - NCF - ENG 642 - 8024	KOOSKI	ID	AOV	OCT 06	08:10
E-214	ENG6	ENGINE - T6 - FIRST STRIKE - 1GC	ROSEBURG	OR	POV	OCT 06	08:20
E-217	ENG6	AMERICAN FIRE 217	ESTACADA	OR	POV	OCT 06	08:30
E-218	ENG6	AMERICAN FIRE 218	PACKWOOD	WA	POV	OCT 06	08:40
O-160	ARCH	AYERS, JUSTIN N	MAGDALENA	NM	REN	OCT 06	08:50
O-180	READ	DICKMAN, GARRETT	EL PORTAL	CA	AOV	OCT 06	09:00
O-266	AREP	SORIA, RHODY	POMONA	CA	AOV	OCT 06	09:10
O-272	FAL1	FALLER SINGLE - JACKSON, KYLE - AGLIAM - FAL2	MOUNTAIN CENTER	CA	POV	OCT 06	09:20
O-595	GISS	WATKINS, DAVID JAMES	WINDSOR	CA	AOV	OCT 06	09:30

CALL DEMOB AT SCHEDULED TIME 949-591-4133

Communications Phone Number:

(213) 503-4322

LINE ORDER FORM

<u>ORDER #</u>	<u>DATE & TIME ORDERED</u> Received from the Line	<u>WHO PLACED ORDER</u> DVS, OPS, etc...	<u>DELIVER to (DIV, Helispot, DP, etc.)</u> Division, Heli-Spot, Drop Point, etc.	<u>MODE of DELIVERY</u> Drive, Heli, pick-up

Order Received in Communications By: _____ TIME: _____

Communications Relayed/Placed the Order To: _____ TIME: _____

Order Shipped to the Line By (Name): _____ TIME: _____

<u>ITEM#</u>	<u>DESCRIPTION</u>	<u>AMOUNT</u>
1	<u>1,000 Foot Hose Lay:</u> Includes the following 10 lengths, 1 1/2" x 100' Hose. 10 lengths, 1" x 100' Hose. 10ea. 1 1/2" Gated Wyes. 10ea. 1 1/2" to 1" Reducers. 10ea. 1" Nozzles.	
2	<u>2,000 Foot Hose Lay:</u> Includes the following 20 lengths, 1 1/2" x 100' Hose. 20 lengths, 1" x 100' Hose. 20ea. 1 1/2" Gated Wyes. 20ea. 1 1/2" to 1" Reducers. 20ea. 1" Nozzles.	
3	<u>3,000 Foot Hose Lay:</u> Includes the following 30 lengths, 1 1/2" x 100' Hose. 30 lengths, 1" x 100' Hose. 30ea. 1 1/2" Gated Wyes. 30ea. 1 1/2" to 1" Reducers. 30ea. 1" Nozzles.	

<u>ITEM#</u>	<u>REQUESTED ITEM</u>	<u>NFES#</u>	<u>AMOUNT</u>	<u>ITEM#</u>	<u>REQUESTED ITEM</u>	<u>NFES#</u>	<u>AMOUNT</u>
4	Backpack Pump, 5 gallon	1149		26	Batteries, "AA", (package)	0030	
5	Foam, 5 gallon	1145		27	Gasoline, Unleaded (gallon)		
6	Hose, 3/4 inch, 50 ft. length	1016		28	Oil, 2 Cycle Mix (quart)	0341	
7	Hose, 1 inch, 100 ft. length	0966		29	Diesel, straight (gallon)		
8	Hose, 1 1/2 inch, 100 ft. length	0967		30	Oil, Bar & Chain (gallon)	1880	
9	Increaser, 3/8" to 1"	2235		31	Fusees (box)	0105	
10	Increaser, 1" to 1 1/2"	0416		32	Torch, Drip Torch ea.	0241	
11	Nozzle, Garden 3/4 inch	0136		33	Mix, Drip Torch 3-1, 5 gal.		
12	Nozzle, Forester, 1"	0024		34	Flagging, Ribbon, Color/Roll		
13	Nozzle, KK Type, 1"	1081		35	Washcloth, Waterless	0206	
14	Nozzle, KK Type, 1 1/2"	1082		36	Water, Cubi, 5 gallon ea.	0048	
15	Reducer, 1" to 3/8"	0733		37	Water, Bottled, (case)		
16	Reducer, 1 1/2" to 1"	0009		38	Sports Drink, Gatorade (case)		
17	Tee, Hoseline, 1"x1"x 3/8"	1809		39	Food, MRE's (12 per Box)	1842	
18	Tee, Hoseline, 1"x1"x 1"	2240		40	Pump Kit, High Pressure	0870	
19	Tee, Hoseline, 1 1/2" x 1 1/2" x 1"	0230		41	Pump, High Pressure	0148	
20	Wye, Gated, 3/8" inch	0904		42	Pump Kit, Light Weight	0670	
21	Wye, Gated, 1"	0259		43	Sprinkler Kit	1048	
22	Wye, Gated, 1 1/2"	0231		44	Pump Kit, Volume	6041	
23	Tank, Collapsible. Capacity Gallons?			45	Mop-Up Kit	0772	
24	Tank, Folding/Frame. Capacity ??						
25	Wrap, Structure (roll)	0881					

Date and Time Needed: _____ Point of Contact at Delivery Location: _____

OTHER / NOTES:

Communications Phone Number:

(213) 503-4322

LINE ORDER FORM

<u>ORDER #</u>	<u>DATE & TIME ORDERED</u> Received from the Line	<u>WHO PLACED ORDER</u> DVS, OPS, etc...	<u>DELIVER to (DIV, Helispot, DP, etc.)</u> Division, Hel-Spot, Drop Point, etc.	<u>MODE of DELIVERY</u> Drive, Helo, pick-up			
<u>Order Received in Communications By:</u>				<u>TIME:</u>			
<u>Communications Relayed/Placed the Order To:</u>				<u>TIME:</u>			
<u>Order Shipped to the Line By (Name):</u>				<u>TIME:</u>			
<u>ITEM#</u>	<u>DESCRIPTION</u>			<u>AMOUNT</u>			
1	<u>1,000 Foot Hose Lay:</u> Includes the following 10 lengths, 1 1/2" x 100' Hose. 10 lengths, 1" x 100' Hose. 10ea. 1 1/2" Gated Wyes. 10ea. 1 1/2" to 1" Reducers. 10ea. 1" Nozzles.						
2	<u>2,000 Foot Hose Lay:</u> Includes the following 20 lengths, 1 1/2" x 100' Hose. 20 lengths, 1" x 100' Hose. 20ea. 1 1/2" Gated Wyes. 20ea. 1 1/2" to 1" Reducers. 20ea. 1" Nozzles.						
3	<u>3,000 Foot Hose Lay:</u> Includes the following 30 lengths, 1 1/2" x 100' Hose. 30 lengths, 1" x 100' Hose. 30ea. 1 1/2" Gated Wyes. 30ea. 1 1/2" to 1" Reducers. 30ea. 1" Nozzles.						
<u>ITEM#</u>	<u>REQUESTED ITEM</u>	<u>NFES#</u>	<u>AMOUNT</u>	<u>ITEM#</u>	<u>REQUESTED ITEM</u>	<u>NFES#</u>	<u>AMOUNT</u>
4	Backpack Pump, 5 gallon	1149		26	Batteries, "AA", (package)	0030	
5	Foam, 5 gallon	1145		27	Gasoline, Unleaded (gallon)		
6	Hose, 3/4 inch, 50 ft. length	1016		28	Oil, 2 Cycle Mix (quart)	0341	
7	Hose, 1 inch, 100 ft. length	0966		29	Diesel, straight (gallon)		
8	Hose, 1 1/2 inch, 100 ft. length	0967		30	Oil, Bar & Chain (gallon)	1880	
9	Increaser, 3/8" to 1"	2235		31	Fusees (box)	0105	
10	Increaser, 1" to 1 1/2"	0416		32	Torch, Drip Torch ea.	0241	
11	Nozzle, Garden 3/4 inch	0136		33	Mix, Drip Torch 3-1, 5 gal.		
12	Nozzle, Forester, 1"	0024		34	Flagging, Ribbon, Color/roll		
13	Nozzle, KK Type, 1"	1081		35	Washcloth, Waterless	0206	
14	Nozzle, KK Type, 1 1/2"	1082		36	Water, Cubi, 5 gallon ea.	0048	
15	Reducer, 1" to 3/8"	0733		37	Water, Bottled, (case)		
16	Reducer, 1 1/2" to 1"	0009		38	Sports Drink, Gatorade (case)		
17	Tee, Hoseline, 1"x1"x 3/8"	1809		39	Food, MRE's (12 per Box)	1842	
18	Tee, Hoseline, 1"x1"x 1"	2240		40	Pump Kit, High Pressure	0870	
19	Tee, Hoseline, 1 1/2" x 1 1/2" x 1"	0230		41	Pump, High Pressure	0148	
20	Wye, Gated, 3/8" inch	0904		42	Pump Kit, Light Weight	0670	
21	Wye, Gated, 1"	0259		43	Sprinkler Kit	1048	
22	Wye, Gated, 1 1/2"	0231		44	Pump Kit, Volume	6041	
23	Tank, Collapsible. Capacity Gallons??			45	Mop-Up Kit	0772	
24	Tank, Folding/Frame. Capacity ??						
25	Wrap, Structure (roll)	0881					

Date and Time Needed: _____ Point of Contact at Delivery Location: _____

OTHER / NOTES:

MEDICAL PLAN	1. INCIDENT NAME: Windy	2. DATE PREPARED: October 5, 2021	3. TIME PREPARED: 1600	4. OPERATIONAL PERIOD 10/6-10/7/2021 0600-0600
---------------------	----------------------------	--------------------------------------	---------------------------	---

5. INCIDENT MEDICAL AID STATIONS

MEDICAL AID STATIONS	LOCATION	ALS	
		YES	NO
Emergency Response Logistics	Porterville Fairgrounds 2700 Teapot Dome Ave., Porterville, CA 93257	XX	
Emergency Response Logistics	Camp 9 857 Sierra Way, Kernville, CA	XX	

6. TRANSPORTATION

A. Ambulance Services

NAME	LOCATION	PHONE	ALS	
			YES	NO
Imperial Ambulance 877 (0600-1800)	Hwy 190 Corridor	559-687-3048	XX	
Imperial Ambulance 878 (1800-0600)	Hwy 190 Corridor	559-687-3048	XX	
Liberty Rescue 2 (0600-1800)	Mt 90/Trail of 100 Giants		XX	
Idyllwild Ambulance 626 (1800-0600)	Johnsondale/Johnsondale Bridge		XX	
Care Ambulance 383	Johnsondale	530-559-1007		XX
Emergency Ambulance 27 (0600-1800)	Pine Flat	626-253-3111		XX
Premier Ambulance 77 (1800-0600)	Pine Flat	626-253-3111		XX
Imperial Ambulance (911 System)	Tulare County	559-687-3048	XX	

B. AIR AMBULANCE

NAME	LOCATION	ALS	BLS
Kern County FD H407	Visalia - 24 hr, Holst, NVG (ETA 20-30 Min) 530-656-8660		XX
CHP	Bakersfield - Day Holst Only (ETA 30 Min) 559-550-8100	XX	
US Coast Guard	Lemoore - 24 hr, Holst, NVG (ETA 60-90 Min) 510-437-3701	XX	
Air SkyLife	Visalia - 24 hr, NVG (ETA 20-30 Min) 559-687-3048	XX	

7. HOSPITALS

NAME	ADDRESS	TRAVEL TIME		PHONE	TRAUMA		HELIPAD		BURN CENTER	
		AIR	GRND		Yes	No	Yes	No	Yes	No
Sierra View Hospital	465 W Putnam Ave, Porterville, CA	N/A	40 Min	559-788-6176		XX		XX		XX
Kaweah Health Medical Center	400 W. Mineral King Ave. Visalia, CA 36°19.68' N, 119°17.63' W	5 Min	60 Min	559-624-2000	L-3		XX			XX
Kern Medical Center	1700 Mt. Vernon Ave. Bakersfield, CA 35° 23.05' N, 118° 58.15' W	15 Min	60 Min	661-326-2000	L-2		XX			XX
Community Regional Medical Center	2823 Fresno St. Fresno, CA 36° 45.65' N, 119° 47.12' W	15 Min	70 Min	559-459-4220	L-1		XX		XX	
Adventist Health Bakersfield	2615 Chester Ave. Bakersfield, CA 35° 23.02' N, 119° 01.13' W	15 Min	45 Min	661-395-3000		XX	XX			

8. MEDICAL EMERGENCY PROCEDURES

"RED IWI" MEDICAL-EMERGENCY PLAN:

- Contact Communications on Command and declare you have a RED IWI
- Following the 8-Line on the back of the IAP or page 118 of the 2018 IRPG
- Tell them Who you are, Where you are, What you have, and What you need.
- Update Communications once the patient has been transported.
- Close the loop with MEDL at the end of shift.

"Yellow or Green" NON-EMERGENCY MEDICAL PLAN:

- Contact Division / Communications and declare you have a "Non-Emergency Medical."
- Complete the 8-line if needed and turn it in to the medical unit at the end of the shift

ICP/Camp Emergencies

- Tulare ICP- Dial 911
 - Porterville FOB – Emergency Rescue Logistics
- Notify MEDL and SOF for "Red or Yellow" in camp IWI

9. PREPARED BY MEDL – Robert Russell	10. REVIEWED BY SOF1 - Dave Welch
---	--------------------------------------

Medical Incident Report

FOR A **NON-EMERGENCY INCIDENT**: WORK THROUGH CHAIN OF COMMAND TO REPORT AND TRANSPORT INJURED PERSONNEL AS NECESSARY.

FOR A **MEDICAL EMERGENCY**: IDENTIFY ON SCENE INCIDENT COMMANDER BY NAME AND POSITION AND ANNOUNCE **"MEDICAL EMERGENCY"** TO INITIATE RESPONSE FROM COMMUNICATIONS

Use the following items to communicate situation to communications/dispatch.

1. CONTACT COMMUNICATIONS / DISPATCH (Verify correct frequency prior to starting report)

Ex: "Communications, Div. Alpha. Stand-by for Emergency Traffic."

2. INCIDENT STATUS: Provide incident summary (including number of patients) and command structure.

Ex: "Communications, I have a Red priority patient, unconscious, struck by a falling tree.

Requesting air ambulance to Forest Road 1 at (Lat./Long.)

"This will be the Trout Meadow Medical Incident, IC is TFLD Jones. EMT Smith is providing medical care."

Severity of Emergency AND Transport Priority (priority 1, 2, 3)	<input type="checkbox"/> RED / PRIORITY 1 Life or limb threatening injury or illness. Evacuation need is IMMEDIATE <i>Ex: Unconscious, difficulty breathing, bleeding severely, 2° – 3° burns more than 4 palm sizes, heat stroke, disoriented.</i>	
	<input type="checkbox"/> YELLOW / PRIORITY 2 Serious Injury or illness. Evacuation may be DELAYED if necessary. <i>Ex: Significant trauma, unable to walk, 2° – 3° burns not more than 1-3 palm sizes.</i>	
	<input type="checkbox"/> GREEN / PRIORITY 3 Minor Injury or illness. Non-Emergency transport <i>Ex: Sprains, strains, minor heat-related illness.</i>	
Nature of Injury or Illness & Mechanism of Injury		<i>Brief Summary of Injury or Illness (Ex: Unconscious, Struck by Falling Tree)</i>
Transport Request		<i>Air Ambulance / Short Haul/Hoist Ground Ambulance / Other</i>
Patient Location		<i>Descriptive Location & Lat. / Long. (WGS84)</i>
Incident Name		<i>Geographic Name + "Medical" (Ex: Trout Meadow Medical)</i>
On-Scene Incident Commander		<i>Name of on-scene IC of Incident within an Incident (Ex: TFLD Jones)</i>
Crew Patient Care		<i>Name of Care Provider (Ex: EMT Smith)</i>

3. INITIAL PATIENT ASSESSMENT: Complete this section for each patient as applicable (start with the most severe patient)

Agency Affiliation: (NO PATIENT NAMES) Federal Contractor Local Government

Patient Assessment: Age: Weight: Chief Complaint:

(If pertinent to Injury) Skin Signs: (color/moisture/temp) Level of Consciousness: BP: HR: Respirations:

Treatment:

4. TRANSPORT PLAN:

Evacuation Location (*drop point, intersection, helispot, Lat. / Long, hazards*) Patient's ETA to Location:

5. ADDITIONAL RESOURCES / EQUIPMENT NEEDS:

Paramedic / EMT - Crews - Immobilization Devices - AED - Oxygen - Trauma Bag - IV/Fluid(s) - Splints - Rope rescue - Wheeled litter - HAZMAT - Extrication

6. COMMUNICATIONS: Identify State Air/Ground EMS Frequencies and Hospital Contacts as applicable

Function	Channel Name/Number	Receive (RX)	Tone/NAC *	Transmit (TX)	Tone/NAC *
COMMAND					
AIR-TO-GRND					

7. CONTINGENCY: Considerations: If primary options fail, what actions can be implemented in conjunction with primary evacuation method?
Be thinking ahead.

8. ADDITIONAL INFORMATION: *Updates/Changes, etc.*

REMEMBER: Confirm ETA's of resources ordered. Act according to your level of training. Be Alert - Keep Calm - Think Clearly - Act Decisively

*** Follow up with MEDL upon return to ICP ***