

These Management Action Points (MAP), if reached, will prompt a discussion of full engagement of CAIIMT 13.

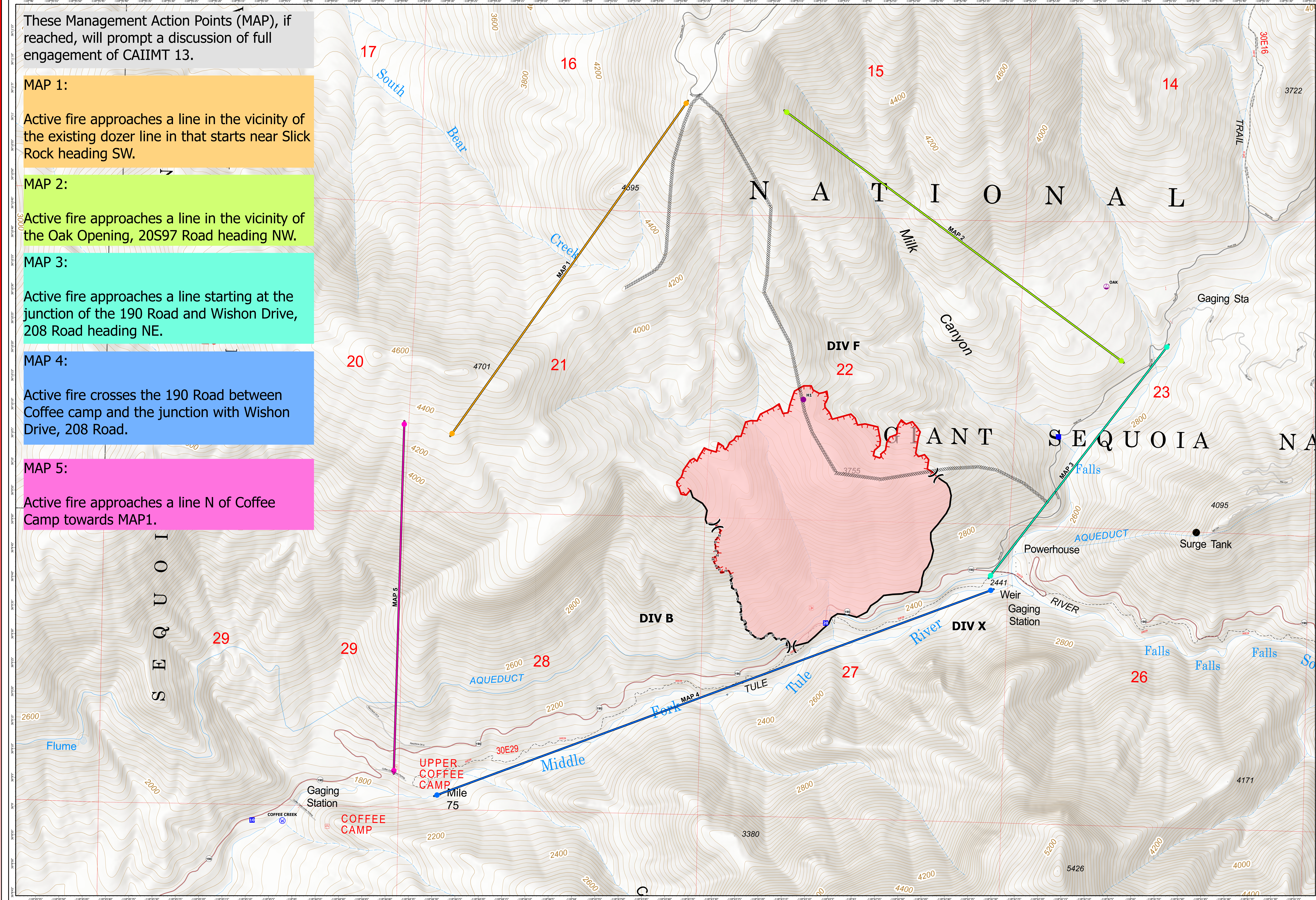
**MAP 1:**  
Active fire approaches a line in the vicinity of the existing dozer line in that starts near Slick Rock heading SW.

**MAP 2:**  
Active fire approaches a line in the vicinity of the Oak Opening, 20S97 Road heading NW.

**MAP 3:**  
Active fire approaches a line starting at the junction of the 190 Road and Wishon Drive, 208 Road heading NE.

**MAP 4:**  
Active fire crosses the 190 Road between Coffee camp and the junction with Wishon Drive, 208 Road.

**MAP 5:**  
Active fire approaches a line N of Coffee Camp towards MAP1.



- Helispot
- Sling Site
- Division Break
- Drop Point
- ⊙ Water Source
- Completed Dozer Line
- Completed Hand Line
- Contained
- MAP 1
- MAP 2
- MAP 3
- MAP 4
- MAP 5
- Wildfire Daily Fire Perimeter
- Uncontained

**MANAGEMENT ACTION POINTS**  
WISHON  
CA-SQF-002089  
8/18/2022

0 1/4 1/2 Miles

Map Updated: 8/17/2022 9:37 PM