

119°38'0"W

119°37'0"W

119°36'0"W

119°35'0"W

119°34'0"W

119°33'0"W

119°32'0"W

37°33'0"N

37°32'0"N

37°31'0"N

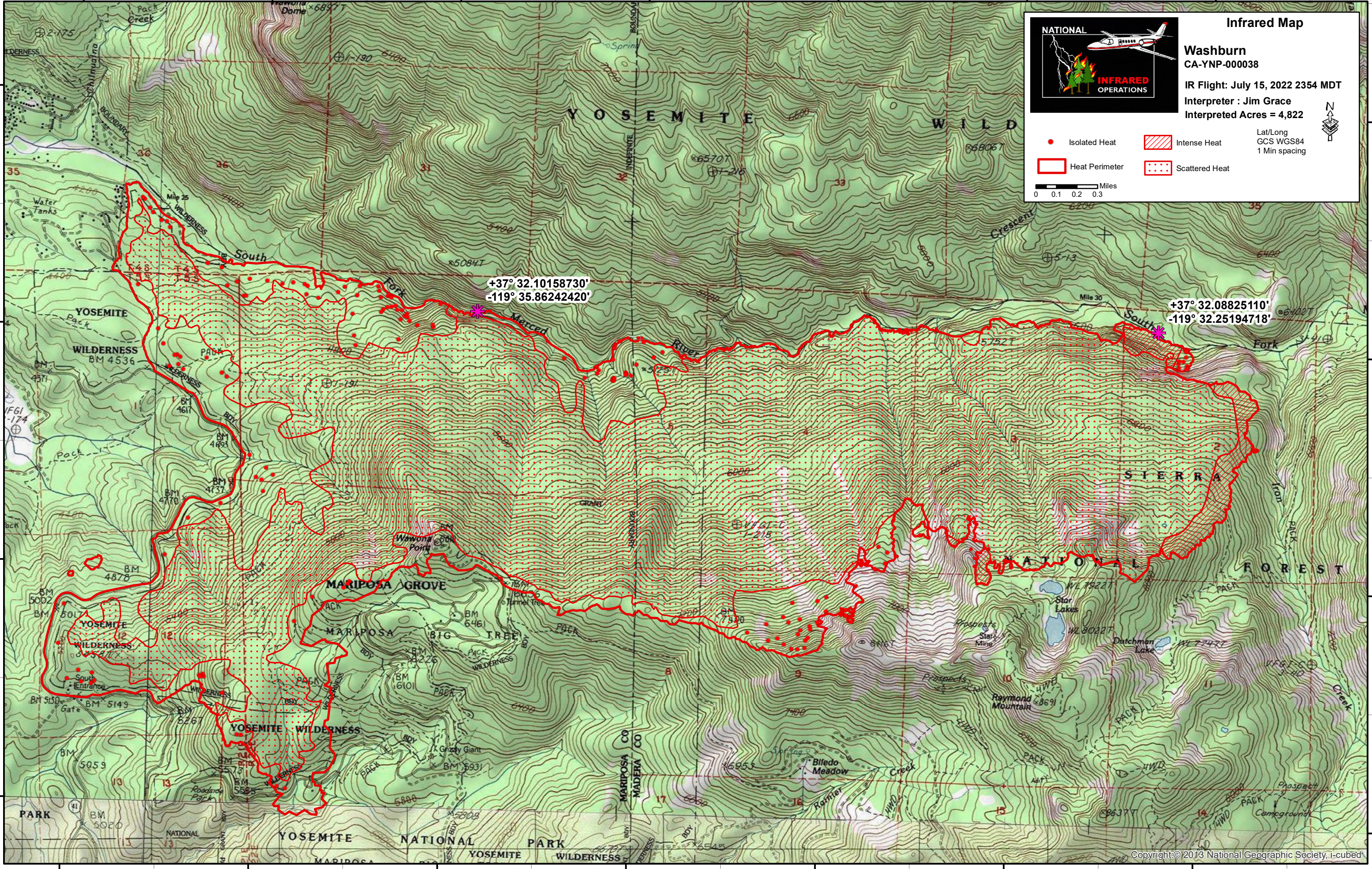
37°30'0"N

37°33'0"N

37°32'0"N

37°31'0"N

37°30'0"N



NATIONAL

INFRARED OPERATIONS

Infrared Map
Washburn
 CA-YNP-000038
 IR Flight: July 15, 2022 2354 MDT
 Interpreter : Jim Grace
 Interpreted Acres = 4,822

Lat/Long
 GCS WGS84
 1 Min spacing

● Isolated Heat Intense Heat
 Heat Perimeter Scattered Heat

Miles
 0 0.1 0.2 0.3

+37° 32.10158730'
 -119° 35.86242420'

+37° 32.08825110'
 -119° 32.25194718'

119°38'0"W

119°37'0"W

119°36'0"W

119°35'0"W

119°34'0"W

119°33'0"W

119°32'0"W