

119°38'0"W

119°37'0"W

119°36'0"W

119°35'0"W

119°34'0"W

119°33'0"W

119°32'0"W

37°33'0"N

37°32'0"N

37°31'0"N

37°30'0"N

37°33'0"N

37°32'0"N

37°31'0"N

37°30'0"N



### Infrared Map

**Washburn**  
CA-YNP-000038

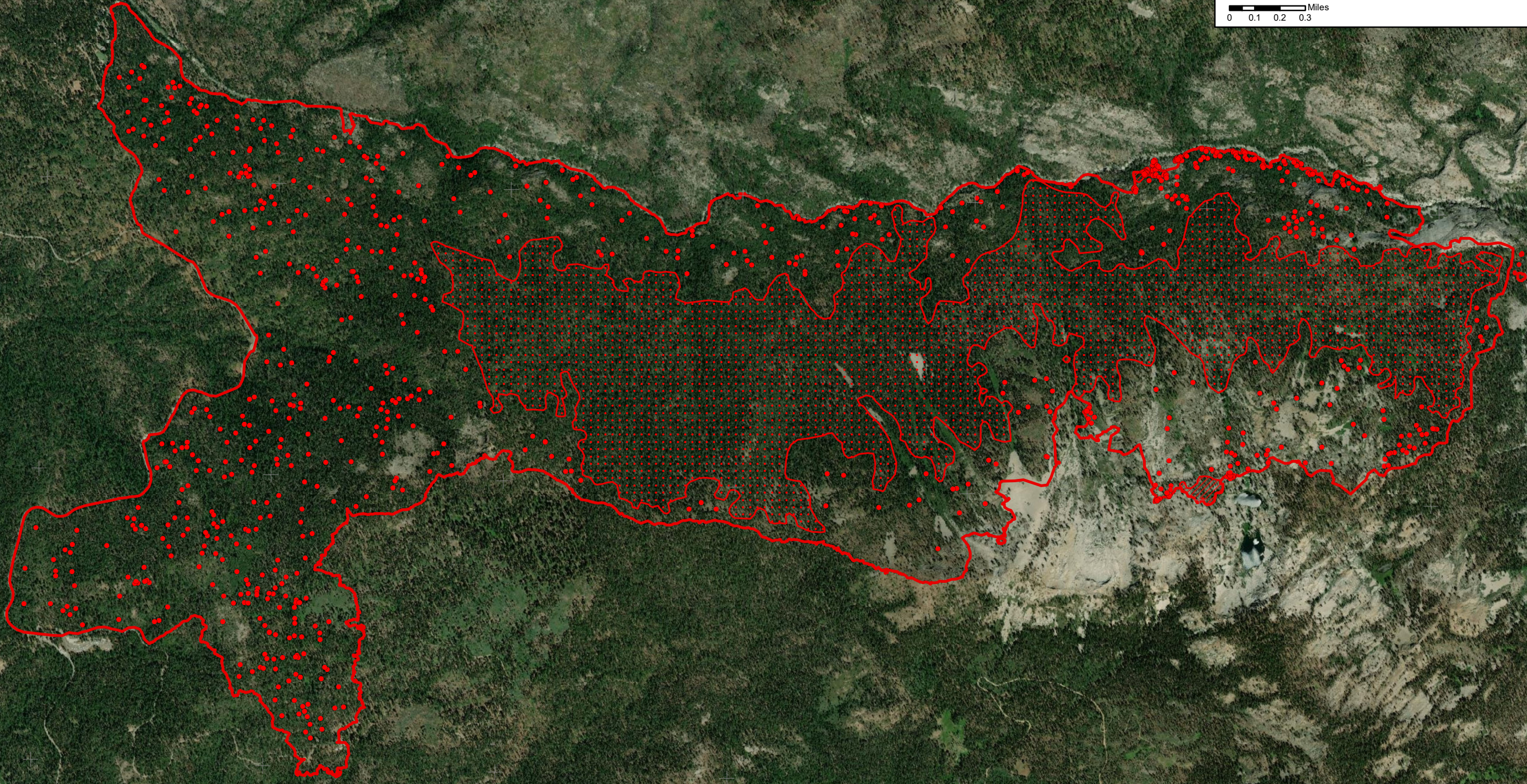
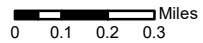
IR Flight: July 20, 2022 2352 MDT

Interpreter : Jim Grace  
Interpreted Acres = 4,870

Lat/Long  
GCS WGS84  
1 Min spacing



- Isolated Heat
- Heat Perimeter
- Intense Heat
- Scattered Heat



119°38'0"W

119°37'0"W

119°36'0"W

119°35'0"W

119°34'0"W

119°33'0"W

119°32'0"W