

119°38'0"W

119°37'0"W

119°36'0"W

119°35'0"W

119°34'0"W

119°33'0"W

119°32'0"W

37°33'0"N

37°32'0"N

37°31'0"N

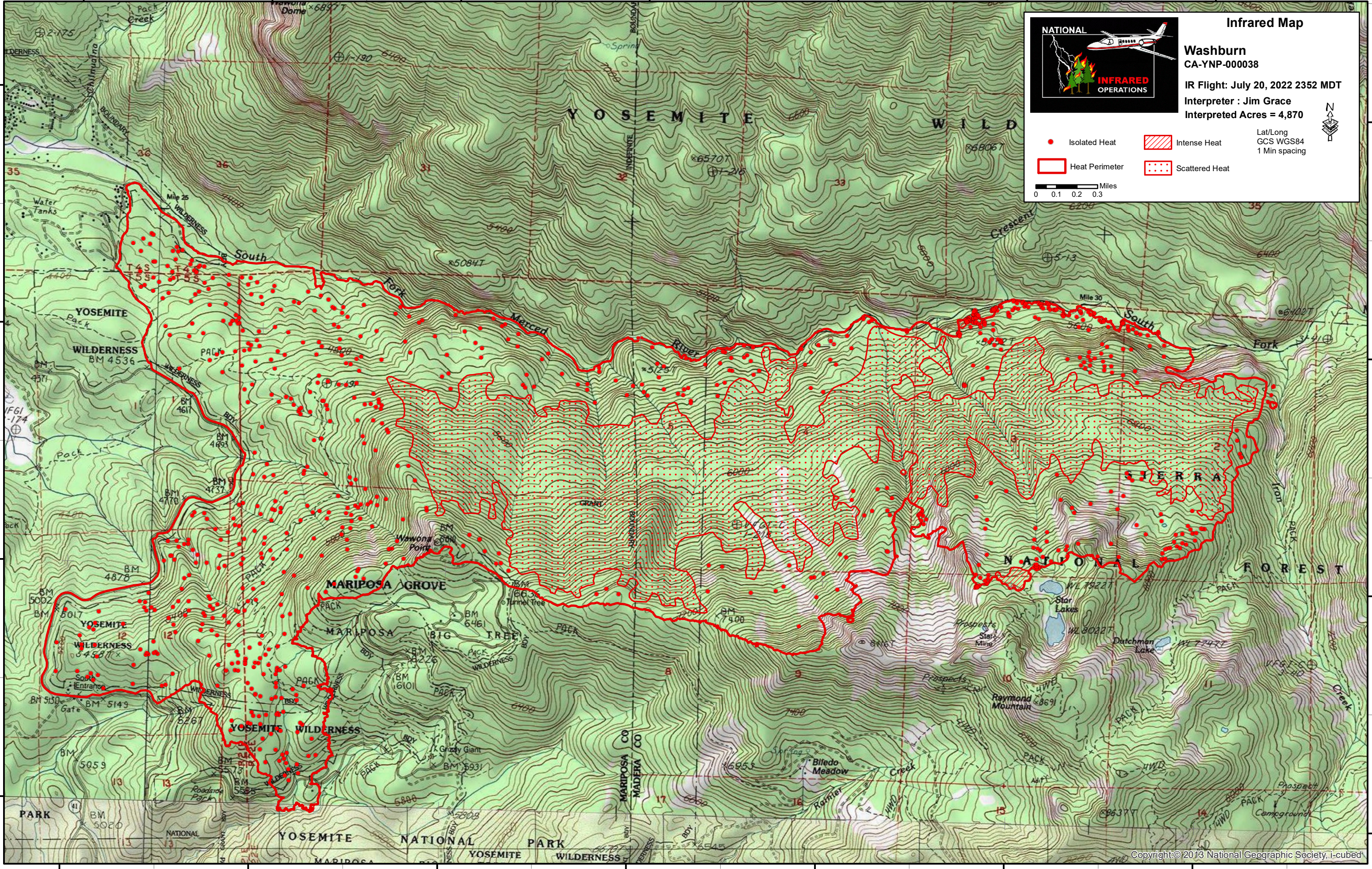
37°30'0"N

37°33'0"N

37°32'0"N

37°31'0"N

37°30'0"N



**Infrared Map**

**Washburn**  
CA-YNP-000038

IR Flight: July 20, 2022 2352 MDT  
Interpreter: Jim Grace  
Interpreted Acres = 4,870

Lat/Long  
GCS WGS84  
1 Min spacing

**NATIONAL INFRARED OPERATIONS**

- Isolated Heat
- ▨ Intense Heat
- ▭ Heat Perimeter
- ⋯ Scattered Heat

0 0.1 0.2 0.3 Miles

119°38'0"W

119°37'0"W

119°36'0"W

119°35'0"W

119°34'0"W

119°33'0"W

119°32'0"W