

# Yosemite National Park Fire and Aviation Management



## Red & Rodgers 3 DAY IAP

9/4/2022-9/6/2022



**Red: CA-YNP-0056/PYW6/PF.FSPYW6C22.00.1**

**Rodgers: CA-YNP-0058/PZA1/PF.FSPZA1C22.00.1**



Red Fire



Rodgers Fire

<b>INCIDENT OBJECTIVES ICS-202</b>		<b>1. INCIDENT NAME:</b> Red & Rodgers	<b>2. DATE:</b> 09/3/2022	<b>3. TIME:</b> 1300
<b>4. OPERATIONAL PERIOD (DATE/TIME):</b> 9/4-9/6/22 0700-1900				
<b>5. OBJECTIVES:</b>				
<p><b>1. Provide for firefighter and public safety</b></p> <ul style="list-style-type: none"> <li>• Monitor public areas and trails. Close areas as needed.</li> <li>• Obtain and monitor current and forecasted weather.</li> <li>• Track all incident resources.</li> <li>• Support IA response coordinated with Fire Duty Officer.</li> </ul> <p><b>2. Provide timely and accurate information to public, park employees and cooperators</b></p> <ul style="list-style-type: none"> <li>• Keep park employees and public informed of situation through Inciweb, park webpage, social media, PSAs</li> <li>• Complete ICS-209 Incident Status Summaries according to South Ops guidance</li> <li>• Publish decisions in WFDSS</li> </ul> <p><b>3. Fire Management activities will be accomplished in a manner that is consistent with Wilderness values and character.</b></p> <ul style="list-style-type: none"> <li>• All activities will follow the minimum tool requirements found in the <i>Programmatic Minimum Requirement Analysis for Wildfire Management in Yosemite Wilderness</i></li> </ul>				
<b>6. WEATHER FORECAST FOR OPERATIONAL PERIOD:</b> See spot weather				
<b>7. FIRE BEHAVIOR:</b> See Fire Behavior forecast.				
<b>8. SAFETY CONCERNS AND MITIGATIONS FOR HAZARDS:</b>				
<ul style="list-style-type: none"> <li>• Snag exposure: heavy fuel loadings, extremely dry susceptible fuels</li> <li>• Remote fire locations and reliance on aircraft, have a back-up</li> <li>• Dehydration and Heat Related Injury</li> <li>• Bears and wildlife</li> <li>• Follow best practices for COVID19</li> </ul>				
<b>9. SPECIAL INSTRUCTIONS:</b>				
<ul style="list-style-type: none"> <li>• Ensure public are not in or near fire area(s). Nearby trails are closed</li> <li>• Remain vigilant for changes in fire behavior; utilize MIST tactics</li> <li>• Don't rely on aircraft; have a secondary plan in the wilderness</li> </ul>				
<b>10. ATTACHMENTS:</b>				
<input checked="" type="checkbox"/> Organization List (ICS-203) <input type="checkbox"/> Organizational Chart (ICS-207)		<input checked="" type="checkbox"/> Communications Summary (ICS-205) <input checked="" type="checkbox"/> Medical Plan (ICS-206) <input type="checkbox"/> Risk Analysis (ICS-215A) <input checked="" type="checkbox"/> READ Notes and Advice		<input checked="" type="checkbox"/> Aviation Operation Summary (ICS-220) <input checked="" type="checkbox"/> Spot Weather Forecast <input checked="" type="checkbox"/> Project Map <input checked="" type="checkbox"/> Division Assignment (s) (ICS-204)
<b>11. PREPARED BY:</b> Scott Beacham		<b>12. APPROVED BY:</b> Dan O'Connor		

<b>ORGANIZATION ASSIGNMENT LIST ICS-203</b>		<b>1. INCIDENT NAME</b> Red & Rodgers	<b>2. DATE PREPARED</b> 09/3/2022	<b>3. TIME PREPARED</b> 1300
POSITION NAME		<b>4. OPERATIONAL PERIOD (DATE/TIME)</b> 9/4-9/6/22 0700-1900		
<b>5. INCIDENT MANAGEMENT TEAM</b>		<b>9. OPERATIONS SECTION</b>		
INCIDENT COMMANDER	Dan O'Connor, Greg Jones (t)	OPERATIONS	Russell Mitchell / Rob Winkler	
		PLANNING OPS	Mike Klimik	
SAFETY OFFICER	Bernie Spielman	Red Fire		
INFORMATION OFFICER	Sarah Platt (t)	DIVS A	Brent Woffinden	
	Lupe Ruiz (t)	DIVISION Rodgers Fire	N/A	
	Timothy Evans			
<b>6. AGENCY REPRESENTATIVES</b>				
SUPERINTENDENT	Cicely Muldoon			
DEPUTY SUPERINTENDENT	Teresa Austin			
FIRE MANAGEMENT OFFICER	Dan Buckley			
DEPUTY FIRE MANAGEMENT OFFICER	Kelly Singer			
FIRE DUTY OFFICER	Parker Bevington			
<b>7. PLANNING SECTION</b>				
CHIEF	Scott Beacham			
DEPUTY				
LEAD READ	Molly Baptista			
		<b>AIR OPERATIONS BRANCH</b>		
		PARK AVIATION MANAGER	Susie Bates	
		MARIPOSA HELIBASE MANAGER	Jeremy Landers	
LTAN (t)	Jasper Peach	CRANE FLAT HELIBASE MANAGER	Heather Wonenberg	
		CRANE FLAT HELIBASE MANAGER	Andrew "Boots" Davenport	
<b>8. LOGISTICS</b>				
CHIEF	Brian Kruger 707-731-9489     Randy Jackson 209-769-1847			
SUPPLY UNIT (t)	Jim Middleton			
COMUNICATION UNIT				
MEDICAL UNIT	George Hein	<b>10. FINANCE/ADMINISTRATION SECTION</b>		
FIRE DISPATCH	Yosemite Dispatch 209-379-1999	CHIEF	Melin Ludwig	
WHHR / Driver	Bill Hulme, Gloria Smith, Bryan Spielman,	TIME UNIT	Raven Watson, Rebecca Lange	
		COST UNIT		
PREPARED BY: Scott Beacham		APPROVED BY: Dan O'Connor		

## FIRE BEHAVIOR FORECAST

<b>FORECAST NUMBER:</b> 2	<b>TYPE OF FIRE:</b> Wildfire
<b>FIRE NAME:</b> Red and Rodgers	<b>OPERATIONAL PERIOD:</b> September 4-6, 2022
<b>DATE ISSUED:</b> September 3, 2023	<b>TIME ISSUED:</b> 2000
<b>UNIT:</b> CA-YNP	<b>SIGNED:</b> Jasper Peach Long Term Analyst (LTAN-t)

**WEATHER SUMMARY:** See detailed Fire Weather Forecast in IAP

### FUELS:

Fire areas includes high elevation Jeffery pine, red fir, mixed conifer, brush and grass. Expect heavy fuel loading in high severity patches of old fire scars and dense stands of mixed conifer forest. A 'extreme' drought according to the US Drought Monitor, with Energy Release Components above the 97<sup>th</sup> percentile. Heavy dead and down will likely burn completely, holding heat and actively consuming through all hours of the day and night. Isolated single tree and group tree torching in dense timber where ladder fuels exist.

### EXPECTED FIRE BEHAVIOR: *Based on the Warmest, Driest, Windiest Conditions Forecasted*

<u>Maximum Spotting Distance</u>	Fuel Type/Model	Maximum Rate of Spread (chains/hour)	Maximum Flame Length (feet)
0.25 mile	Timber-Shrub (TU5- Very High Load, Dry Climate)	Head 10-15 ch/hr Backing 0.5-1 ch/hr	Head 6-8 ft Backing 1-3 ft
<u>Probability of Ignition</u> 73 %		Grass-Shrub (GS2-Moderate Load, Dry Climate)	Head 15-25 ch/hr Backing 1-2 ch/hr

**General:** High temperatures and low RH's will remain with terrain influenced winds. Thunderstorms may occur over the fire area which will produce gusty and erratic winds. Be aware of changing conditions such as winds associated with instability that can greatly increase fire behavior.

### SPECIFIC

#### **RED**

Terrain driven winds will continue to be favorable to limit spread to the SW during the daytime for DIV A. Gusty winds associated with thunderstorms may be problematic in heavy fuels that continue to hold heat. Fuels continue to remain dry and receptive to short range and long-range spotting (less than 0.25 mile). Unchecked fire in DIV Z will continue to spread with low to moderate rates in the red fir. Stronger winds may be present on higher exposed ridges.

#### **ROGERS**

Fire will continue grow to the SE and S in unchecked shrub belts. Be heads up of rapid rates of spread in the brush fuel type when winds and/or topography are in alignment.

**Nighttime** RH recoveries will improve just slightly but continue to aid in fire remaining active overnight. Winds will be light but continued active growth can occur where fire in unchecked.

### **AIR OPERATIONS:**

Smoke may limit aircraft use in the mornings due to inversion set over the fire area.

### **SAFETY:**

**Be heads up for the potential for thunderstorm and rapidly changing conditions.**

# Safety Message

**Accumulated (chronic) Fatigue** is defined as fatigue from which normal rest does not produce recovery. Accumulated fatigue is often caused by extended periods of stress with inadequate recovery periods, which results in decreased productivity, compromised immune function, and reduced alertness. Fatigued workers perform poorly, behave carelessly, tolerate greater errors, and become inattentive. Chronic fatigue often results in increased stress, which may present itself through certain behavioral and physiological indicators, such as those described below:

## Behavioral indicators:

- Decreased motivation and low morale.
- Increased irritability and depression.

## Physiological indicators:

- Confusion, poor problem-solving.
- Poor abstract thinking.
- Poor attention/decisions.
- Poor concentration/memory.
- Extreme emotional responses.
- Social/behavioral changes.

## Recommendations for chronic fatigue/stress are:

- Take longer periods of rest/recovery.
- Ensure that workers are adequately rested before they begin work shifts.
- Provide periodic rest breaks to allow physical and mental recovery.
- Alternate between heavy and light tasks.
- Eat well-balanced meals regularly, with energy supplements during periods of high exertion.
- Maintain hydration.
- Ensure workers maintain good personal hygiene.
- Maintain high standards of physical fitness and work capacity.
- In extreme cases, personnel may need to be relieved of their duties.

<b>1. BRANCH:</b>		<b>2. DIVISION/GROUP:</b> <b>A</b>		<b>DIVISION ASSIGNMENT LIST ICS-204</b>			
<b>3. INCIDENT NAME:</b> <b>Red</b>				<b>4. OPERATIONAL PERIOD:</b> 09/4/22 0700 – 09/6/22 1900			
<b>5. OPERATIONAL PERSONNEL:</b>							
<b>IC</b>	Gregory Jones (t)/ Dan O'Connor		<b>Division</b>	Nick Chavez			
<b>Operations</b>	Russell Mitchell / Rob Winkler						
<b>6. RESOURCES ASSIGNED TO THIS PERIOD:</b>							
<b>RESOURCES ASSIGNED</b>	<b>LEADER</b>	<b>NUMBER PERSONS</b>	<b>TRANS. NEEDED</b>	<b>PICKUP PT./TIME</b>	<b>DROP OFF PT./TIME</b>		
Springville IHC	Steven Reyes	22	No	LWD 9/7			
Horseshoe Meadow	Candice Kutrosky	21	No	LWD 9/15			
Calaveras WFM	Dave McCrea	10	No	LWD 9/13			
* Slate Mountain WFM	Woodyard	13	No	LWD 9/12	9/5 move to Red Fire		
READ	Ana Puchoff	1	No	LWD 9/10			
READ	Angela Tricombi	1	No	LWD 9/10			
EMT	Alec Wilson	1	No	LWD 9/11			
EMPF (paramedic)	Ryan Howard	1	No	LWD 9/16			
<b>7. OPERATIONS:</b>							
<ul style="list-style-type: none"> <li>• Keep fire east of Mount Starr King and Lookout Ridge.</li> <li>• Keep fire west of Clark Range. Use granite outcrops along eastern boundary.</li> <li>• Keep fire north of Buena Vista Crest and Merced Pass</li> <li>• Keep fire south of Cascade Cliffs and Bunnell Point</li> </ul>							
<b>8. SPECIAL INSTRUCTIONS:</b>							
<ul style="list-style-type: none"> <li>• Provide for public and firefighter safety</li> <li>• Protect any known cultural resource sites and notify READ if any artifacts discovered</li> <li>• Monitor and provide for visitor safety in fire area.</li> <li>• Implement Wilderness MIST</li> <li>• Be bear aware - proper food storage at all times</li> </ul>							
<b>9. DIVISION/GROUP COMMUNICATIONS SUMMARY:</b>							
<b>Function</b>	<b>Label</b>	<b>RX FREQ</b>	<b>RX MODE</b>	<b>TX FREQ</b>	<b>TX MODE</b>	<b>TONE</b>	
Command Repeat	Fire Repeat	172.775	Analog Narrowband	166.36250	Analog Narrowband	Tone (5) 146.2	Sentinel
Command Repeat	Fire Repeat	172.775	Analog Narrowband	166.36250	Analog Narrowband	Tone (3).131.8	Hoffman
DIVS A TAC	NIFC TAC 5	166.7250	Mixed	166.7250	Analog Narrowband		
Red A/G TAC	Red A/G TAC	167.0625	Mixed	167.0625	Analog Narrowband		
Red A/G CMD	Red A/G CMD	171.0875	Mixed	171.0875	Analog Narrowband		

<b>1. BRANCH:</b>	<b>2. DIVISION/GROUP:</b> <b>Z</b>	<b>DIVISION ASSIGNMENT LIST ICS-204</b>
-------------------	---------------------------------------	---

<b>3. INCIDENT NAME:</b> <b>Red</b>	<b>5. OPERATIONAL PERIOD:</b> 09/4/22 0700 – 09/6/22 1900
--	--

**5. OPERATIONAL PERSONNEL:**

<b>IC</b>	Gregory Jones (t)/ Dan O'Connor	<b>Division</b>	Nick Chavez
<b>Operations</b>	Russell Mitchell / Rob Winkler		

**6. RESOURCES ASSIGNED TO THIS PERIOD:**

RESOURCES ASSIGNED	LEADER	NUMBER PERSONS	TRANS. NEEDED	PICKUP PT./TIME	DROP OFF PT./TIME
Arrowhead IHC	Will Bowman	20	No	LWD 9/15	
Summit WFM	Shawn Gast	8	No	LWD 9/9	
Eagle Lake WFM	Brandon Borden	8	No	LWD 9/14	
Apache Kid WFM	Chris Sanchez	15	No	LWD 9/16	
EMTF	Shawn Stringham	1	No	LWD 9/15	

**7. OPERATIONS:**

- Keep fire west of Clark Range. Use granite outcrops along eastern boundary.
- Keep fire south of Bunnell Point, Cascade Cliff, and Starr King Lake.
- Keep fire east of Mount Starr King and Lookout Ridge.
- Keep fire north of Buena Vista Crest and Merced Pass

**8. SPECIAL INSTRUCTIONS:**

- Provide for public and firefighter safety
- Protect any known cultural resource sites and notify READ if any artifacts discovered
- Monitor and provide for visitor safety in fire area.
- Implement Wilderness MIST
- Be bear aware - proper food storage at all times

**9. DIVISON/GROUP COMMUNICATIONS SUMMARY:**

Function	Label	RX FREQ	RX MODE	TX FREQ	TX MODE	TONE	
Command Repeat	Fire Repeat	172.775	Analog Narrowband	166.36250	Analog Narrowband	Tone (5) 146.2	Sentinel
Command Repeat	Fire Repeat	172.775	Analog Narrowband	166.36250	Analog Narrowband	Tone (3).131.8	Hoffman
Red DIVS Z	R5 T4	166.5500	Mixed	166.5500	Analog Narrowband		
Red A/G TAC	Red A/G TAC	167.0625	Mixed	167.0625	Analog Narrowband		
Red A/G CMD	Red A/G CMD	171.0875	Mixed	171.0875	Analog Narrowband		

<b>6. BRANCH:</b>		<b>7. DIVISION/GROUP:</b>			<b>DIVISION ASSIGNMENT LIST ICS-204</b>		
<b>8. INCIDENT NAME:</b> <b>Rodgers</b>				<b>9. OPERATIONAL PERIOD:</b> 09/4/22 0700 – 09/6/22 1900			
<b>10. OPERATIONAL PERSONNEL:</b>							
<b>IC</b>	Gregory Jones (t)/ Dan O'Connor						
<b>Operations</b>	Russell Mitchell / Rob Winkler						
<b>6. RESOURCES ASSIGNED TO THIS PERIOD:</b>							
<b>RESOURCES ASSIGNED</b>	<b>LEADER</b>	<b>NUMBER PERSONS</b>	<b>TRANS. NEEDED</b>	<b>PICKUP PT./TIME</b>	<b>DROP OFF PT./TIME</b>		
YNP Crew 1	John O'Coy	16	No	LWD 9/17			
Slate Mountain WFM	Woodyard	13	No	LWD 9/12	9/5 move to Red Fire		
EMTF	Anika Ramey	1	No	LWD 9/11			
<b>7. OPERATIONS:</b>							
<ul style="list-style-type: none"> <li>• Keep fire north of Tuolumne River and Register Creek</li> <li>• Keep fire east of Piute Trail</li> <li>• Keep fire west of Register Creek</li> <li>• Keep fire south of Saddle Horse Lake/ Piute Creek and Rodgers Lake</li> </ul>							
<b>8. SPECIAL INSTRUCTIONS:</b>							
<ul style="list-style-type: none"> <li>• Provide for Public and Firefighter safety</li> <li>• Protect any known cultural resource sites and notify READ if any artifacts discovered</li> <li>• Close trails/roads as necessary</li> <li>• Implement Wilderness MIST</li> <li>• Be bear aware--proper food storage at all times</li> </ul>							
<b>9. DIVISION/GROUP COMMUNICATIONS SUMMARY:</b>							
<b>Function</b>	<b>Label</b>	<b>RX FREQ</b>	<b>RX MODE</b>	<b>TX FREQ</b>	<b>TX MODE</b>	<b>TONE</b>	
Command Repeat	Fire Repeat	172.775	Analog Narrowband	166.36250	Analog Narrowband	Tone (3).131.8	Hoffman
Rodgers TAC	Rodgers TAC	168.6000	Mixed	168.6000	Analog (Narrowband)		
Rodgers A/G	Rodgers A/G	168.3375	Mixed	1683375	Analog Narrowband		



<b>INCIDENT RADIO COMMUNICATIONS PLAN</b> <b>ICS - 205</b>	<b>1. INCIDENT NAME:</b> Red & Rodgers	<b>2. DATE/TIME PREPARED:</b> 9/3/2022 1300	<b>3. OPERATIONAL PERIOD DATE/TIME:</b> 9/4-9/6/22 0700-1900
---	---	--	---

**4. BASE RADIO CHANNEL UTILIZATION:**

#	Function	Label	RX FREQ	RX MODE	TX FREQ	TX MODE	TONE
1	Command	Fire Direct	172.775	Mixed	172.775	Analog (Narrowband)	
2	Command Repeater	Fire Repeat	172.775	Mixed	166.36250	Analog (Narrowband)	Tone (3) 131.8
3	Red DIVSA	NIFCTAC5	166.7250	Mixed	166.7250	Analog (Narrowband)	
4	Red DIVSZ	R5 T4	166.5500	Mixed	166.5500	Analog (Narrowband)	
5	Rodgers	Rodgers TAC	168.6000	Mixed	168.6000	Analog (Narrowband)	
6	Trail Guard TAC (as needed)	YNP TAC1	163.7125	Mixed	163.7125	Analog (Narrowband)	
7	Red A/G CMD	Red A/G CMD	171.0875	Mixed	171.0875	Analog (Narrowband)	
8	Red AG TAC	Red AG TAC	167.0625	Mixed	167.0625	Analog (Narrowband)	
9	Rodgers A/G	Rodgers A/G	168.3375	Mixed	168.3375	Analog (Narrowband)	

<b>APPROVED BY:</b>  Dan O'Connor	
---	--

<b>1. INCIDENT NAME:</b> Red & Rodgers Fire	<b>2. OPS PERIOD DATE:</b> 09/02/2022	<b>START TIME:</b> 0800	<b>END TIME:</b> 1930	<b>TWILIGHT:</b> 0606	<b>PUMPKIN:</b> 1951
--	--	----------------------------	--------------------------	--------------------------	-------------------------

<b>3. REMARKS (Safety Notes, Hazards, Air Operations Special Equipment, etc.):</b> Helicopter 551 Rappel, Short-Haul, BLS & ALS capable. Request all aircraft through Crane Flat Helibase over CMD Supply requests request through Yosemite Dispatch over CMD	<b>4. READY ALERT AIRCRAFT:</b> N/A	<b>5. TFR:</b> Yes (2)
--	--	---------------------------

<b>6. PERSONNEL</b>	<b>NAME</b>	<b>PHONE #</b>	<b>7. FREQUENCIES</b>	<b>AM</b>	<b>FM</b>	<b>8. FIXED-WING Avail/ Type/ Make-Model/ N#/ Base</b>
<b>HEBM</b> Mariposa HB	Jeremy Lander	530-414-0289	<b>AIR/ AIR RW</b>	118.5750		<b>AIRTANKERS-</b>
<b>HEBM</b> Crane Flat HB	Heather Wonenberg	209-354-2014	<b>AIR/ AIR</b> Red TFR Rodgers TFR	133.5250 133.0250		<b>LEAD PLANES-</b>
<b>HMGB</b> Fresno	Bert Valdez (79R)	559-643-9683	<b>A/G</b> Red Rodgers		171.0875 CMD 167.0625 TAC 168.3375	<b>HELCO AIRCRAFT-</b>
<b>YOSE Park Aviation Manager</b>	Susie Bates	209-347-0088	<b>COMMAND</b>	FIRE DIRECT	RX/TX 172.775	<b>ATGS AIRCRAFT-</b>  Air Attack 15 out of Fresno Available 0800 N840KB
			<b>COMMAND RPT.</b>	FIRE RPT	RX 172.775 TX 166.3625 Red Fire T-3 or T-2 Rodgers T-3 T-4	
			<b>DECK</b> Mariposa & Crane Flat Helibase		163.100 (Rx & Tx T-16)	<b>TFRs-</b> <b>Rodgers TFR</b> freq - Air to Air AM FQAA - <b>133.0250</b> - A (FAA) Radius: 5 nautical miles Altitude: From the surface up to and including 13000 feet MSL <b>Red TFR</b> freq -Air to Air AM FQAA – <b>133.5250</b> - B (FAA) Radius:5 nautical miles; Altitude; From the surface up to and including 13000 feet MSL

9. HELICOPTERS

FAA N#	T Y	MAKE/ MODEL	BASE	AVAIL	START	REMARKS
H-551 N551H Q	2	Bell 205 A++	Crane Flat		0800	WD (bucket), Recon, PSD, Cargo, Troop, Rescue, ALS/BLS, Short-haul, Rappel (15 folks)
H-554 N78EC	2	Bell 205 A++	Crane Flat		0800	WD (bucket), Recon, PSD, Cargo, Troop (11folks)
H-514 N212HP	2	Bell 212	Mariposa	0830	0800	WD (bucket), Recon, Cargo, Troop (9 folks)
HB- 61KA	1	K-MAX K-1200	Mariposa	0830	0800	WD (bucket) (1 folk)
HT-79R N6979R	1	Sikorsky S-64E	Fresno		0830	WD (tank) (1 folk)

Name of Location	Type of Location	Latitude	Longitude	Altitude (PA)	HIGE/HOGE	Other Info
H-1	HELISPOT	37 40.346	119 28.539	7,733'	HOGE	No longer in use
H-2	HELISPOT	37 39.434	119 28.271	8,238'	HOGE	No Camp No longer in use
H-3	HELISPOT	37 39.075	119 26.711	9,200'	HOGE	
H-4	HELISPOT	37 39.226	119 27.047	9,000'	HOGE	
H-5	HELISPOT	37 40.831	119 29.696	7,200'	HOGE	
H-6	HELISPOT	37 41.955	119 29.512	8,200'	HOGE	
H-7	HELISPOT	37 40.398	119 29.860	7,100'	HOGE	
H-8	HELISPOT	37 40.953	119 30.115	8,200'	HOGE	
S-1	SLING SITE	37 40.304	119 28.596			next to H-1
S-2	SLING SITE	37 40.789	119 29.849			
S-3	SLING SITE	37 40.835	119 29.618			
S-4	SLING SITE	37 39.367	119 28.028			RAWS SITE 250' LONG LINE
S-5	SLING SITE	37 39.558	119 28.728			
S-6	SLING SITE	37 40.060	119 29.345			
S-7	SLING SITE	37 38.727	119 27.796			
S-8	SLING SITE	37 39.207	119 28.442			
S-9	SLING SITE	37 38.852	119 27.968			
S-10	SLING SITE	37 42.115	119 29.395			
S-11	SLING SITE	37 42.025	119 29.655			pumps sling

<b>1. Incident Name:</b> Red and Rodgers Fire		<b>2. Operational Period:</b> Date From: 09/4/22 Date To: 09/6/22 Time From: 0700 Time To: 1900				
<b>3. Medical Aid Stations:</b>						
Name	Location	Contact Number	ALS on Site?			
Yosemite Medical Clinic	9000 Ahwahnee Dr. Yosemite CA, 95389	209-372-4637 Mon-Fri 0900-1700	X Yes <input type="checkbox"/> No			
<b>4. Transportation:</b>						
<b>Air Rescue</b>						
Service	Callsign	Extraction Method	Level of Service			
Yosemite NP	Helicopter 551	Land or Short-haul	X ALS <input type="checkbox"/> BLS			
<b>Ground Ambulance Services</b>						
Service	Location	Time out from Crane Flat HB	Level of Service			
Yosemite NP	Valley Ambulance	1 hr	X ALS <input type="checkbox"/> BLS			
Yosemite NP	Hodgdon Ambulance 2	45 mins out	X ALS <input type="checkbox"/> BLS			
<b>Air Ambulance Services</b>						
Service	Location	Time out from Crane Flat HB	Level of Service			
PHI (AIR)	Columbia, CA	35-45 min once airborne	X ALS <input type="checkbox"/> BLS			
Skylife (Air Methods)	Fresno, CA	30-40 min once airborne	X ALS <input type="checkbox"/> BLS			
Mercy Air (Air Methods)	Merced, Visalia CA	30-40 min once airborne	X ALS <input type="checkbox"/> BLS			
<b>5. Hospitals:</b>						
Hospital Name	Address	Contact Number(s)	Travel Time from Crane Flat Helibase	Trauma Center	Burn Center	Helipad
Community Regional MC	Fresno, CA	559-459-5121	45 Air 3hr Ground	Yes Level: 1	Yes	Yes
Doctors Hospital	Modesto, CA	209-576-3609	30 Air 2 hr 30 min ground	Yes Level: 2	No	Yes
Mercy Medical Center	Merced, CA	209-564-5000	40 Air 2 hr 30 min Ground	No Level: 3	No	Yes
Regional Medical Center	Sonora, CA	209-536-5000	30 air 1hr 40 min ground	Yes Level:3	No	No
John C. Freemont	Mariposa, CA	209-966-3631	20 air 1hr 30 min ground	No Level: 3	No	No
<b>6. Special Medical Emergency Procedures:</b> Activate EMS by calling 9-1-1 or by contacting Yosemite Dispatch on CMD.						
<b>7. Prepared by (Medical Unit Leader):</b> Name: Wonenberg _____ Signature: _____						
<b>8. Approved by (Safety Officer):</b> Name: Scott Beacham Signature: _____						
<b>ICS 206</b>		<b>IAP Page</b> _____		<b>Date/Time:</b> 9/3/22 _____		



### Yosemite Helitack Short-haul Extraction Description\*

Yosemite Helicopter 551 is an Advanced Life Support (ALS) rescue capable ship. For rescue operations, two rescuers can be inserted into technical terrain or an area with tight canopy cover via rappel or Short-haul. Once medical interventions and patient packing are completed by rescuers, 551 will extract all individuals via Short-haul.

Ground personnel should consider a canopy opening free of widow makers and snags as a reasonable site. Ensure extraction site is a safe distance from the fire-line (rotor wash). The standard Short-haul rope length is 150' but can be extended to 250'. During the insertion and extraction process of a patient, ground personnel must remain clear of area.

H-551 will fly to lat and long provided. H-551 will contact personnel on the ground with the patient utilizing identified Air to Ground frequency. Once a recon of the site has been completed, 2 rescuers will be inserted via rappel and may be followed by cargo let down (CLD) of gear. Once Rappel/Short-haul operations commence, H-551 will only be monitoring Air Guard frequency. *During Short-haul operations, ground resources should contact the helicopter only in case of an emergency.*

Once rescuers are on the ground, H-551 will depart the area for the closest landing zone (LZ) and configure helicopter for extraction of patient and rescuers via Short-haul. Once patient packaging is completed, H-551 will return to the area and extract personnel. H-551 will fly to the closest LZ and load the patient internally.

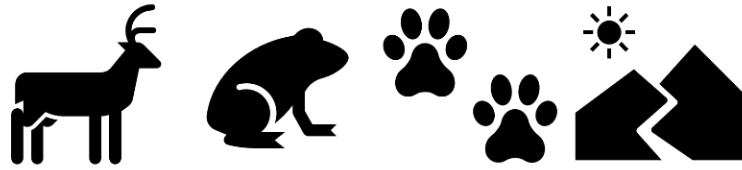
\*This is intended as a brief description. When requesting a medical evacuation, prior to the arrival of H-551, remember the basics: Utilize the Medical Incident Report (MIR) Page 118, IRPG, scene safety, initial patient care and management of on scene personnel.

**2022 Red/Rogers Contact List**

<b>NAME</b>	<b>CALL SIGN</b>	<b>MOBILE PHONE</b>	<b>OFFICE PHONE</b>	<b>EMAIL</b>
Dispatch	Yosemite		209-379-1999	Yose_Emergency_Communications@nps.gov
Fire Cache	Fire Cache		209-379-1205	Yose_Fire_Cache@nps.gov
Helibase	Crane Flat		209-354-2014	
Melin Ludwig	FPMA	209-347-6295	209-372-0480	melin_ludwig@nps.gov
Raven Watson	Asst. FPMA			raven_watson@nps.gov
CTRs				Yose_fire_payroll@nps.gov
Dan Buckley	Chief 500	208-484-5161	209-372-0413	dan_buckley@nps.gov
Kelly Singer	Chief 501 (Wildland)	209-347-9297	209-372-0414	kelly_singer@nps.gov
George Hein	Chief 502 (Structure)	209-347-9175	209-372-0325	george_hein@nps.gov
Susie Bates	PAM	209-347-0088		susan_bates@nps.gov
Jenn Anderson	Division 1 (Fuels)	305-395-9517	209-347-1538	jennifer_r_anderson@nps.gov
Bernie Spielman	BC-12	209-626-6713	209-379-2652	bernard_spielman@nps.gov
Russell Mitchell	BC-11	209-626-9903	209-379-2392	russell_mitchell@nps.gov
Parker Bevington	BC-31	209-626-9216	209-375-9515	parker_bevington@nps.gov
Lacey Hankin	590 (Fire Ecologist)	209-347-2728		lacey_hankin@nps.gov
Sarah Platt	PIO	774-312-1506		sarah_platt@firenet.gov
Lupe Ruiz	PIO	323-387-4464		
Timothy Evans	PIO	350562-7189		timothy.evans@usda.gov
Lia Jigour	YNP Crew 1	209-347-7250	209-379-2392	lia_jigour@nps.gov
John O'Coy	YNP Crew 1	530-736-9095		john_ocoy@nps.gov
Andrew Davenport	YNP H-551	209-404-5912	209-354-2014	andrew_davenport@nps.gov
Heather Wonenberg	YNP H-551	209-347-7546	209-354-2014	heather_wonenberg@nps.gov
Roy Freitas	YNP E-31	209-605-0104	209-379-1903	roy_freitas@nps.gov
Tyler Smerber	YNP E-31	209-628-2233	209-379-1903	Tyler_smerber@nps.gov
Kyle Pina	YNP E-32	209-347-0020	209-375-9515	kyle_pina@nps.gov
Aaron Ludwig	YNP E-33	209-347-0091	209-372-0416	aaron_ludwig@nps.gov
Katie DeRosier	YNP E-33	209-347-0989	209-372-0416	katie_derosier@nps.gov
Brian Kruger	YNP Cache	209-347-0513	209-379-1205	brian_kruger@nps.gov
Randy Jackson	Falcon 1	209-769-1847		randy_jackson@partner.nps.gov
Garrett Dickman	READ	209-347-6148		garrett_dickman@nps.gov
Ana Puchkoff	READ	718-619-0293		
Angela Tricombi	READ (t)	978-641-6953		
Molly Baptista	Arch READ	209-347-7139		molly_baptista@nps.gov
Samuel Stromberg	READ(t)	502-221-6115		
Kent Van Wagtendonk	GISS	209-347-6662		kent_van_wagtendonk@nps.gov
Dan O'Connor	ICT3	619-648-0537	(08/26-09/09)	daniel_s_oconnor@fws.gov
Greg Jones	ICT3 (t)	415-725-7851	(08/26-09/09)	gregory_jones@nps.gov
Jasper Peach	LTAN(t)	360-912-1146	(08/25-09/10)	jasper_peach@nps.gov
Rich Clay	Mammoth Crew Lead	530-638-6343	(08/16-08/30)	richardclayfire22@gmail.com
Alex Teitelbaum	Mammoth Asst	530-638-6343	08/16-08/30)	ateitelb@gmail.com
Jayson Prentice	ARA	913-215-2325		jayson.prentice@ks.gov
Scott Beacham	Plans	402-651-8789		Scott_beacham@nps.gov
Brent Woffinden	DIVS Red Fire	505-660-3155		
Woodyard	Slate Mtn	559-756-5524		
Dave McCrey	Calaveras			
Brandon Borden	Eagle Lake	530-354-0994		
Will Bowman	Arrowhead	559-788-7258		

Chris Sanchez	Apache Kid	505-859-1470		
Candice Kutrosky	Horseshoe Meadow	530-386-6978		
Rob Winkler	Operations	530-276-3189		rwinkler@blm.gov
Ryan Howard	EMPF	530-919-5409		
George Hein	MEDL	209-347-9175	209-327-0414	George_hein@nps.gov
Mike Klimek	Plan OPS	530-604-4720		Mike_klimek@nps.gov
Bernie Spielman	Safety	209-626-6713	209-379-2652	Bernard_spielman@nps.gov

## Resource Advisor Message



You are working in Yosemite Wilderness. Employ Minimal Impact Strategies and Tactics (MIST).

- Scrape around big trees near fireline instead of cutting trees
- Flush-cut stumps
- Leave-No-Trace
  
- Store food and food garbage in bear proof containers or keep on you.
  
- Pack out/backhaul all garbage.
  
- If you find artifacts, like arrowheads, obsidian, old cans and glass, leave these legacy resources where you find them. Contact a REAF on the radio.
  
- Blue/back stripe +white flagging marks sensitive site boundaries. Avoid disturbing this area. Contact a REAF on the radio for more information.
  
- Consult with Fireline Resource Advisors (REAFs) before establishing new camps, staging areas, safety zones, helispots, etc.

Thank you for your commitment and dedication in preserving and protecting irreplaceable natural and cultural resources.





Spot Forecast for Red...Yosemite National Park  
National Weather Service Hanford CA  
810 PM PDT Sat Sep 3 2022

Forecast is based on forecast start time of 0600 PDT on September 04.  
If conditions become unrepresentative...contact the National Weather  
Service.

.DISCUSSION..

A dangerous heat wave will persist through at least the middle of  
next week as a strong ridge of high pressure remains dominant.  
High temperatures each afternoon Sunday through Wednesday will be  
around fifteen degrees above normal for this time of year. A few  
showers and thunderstorms are possible over the wildfire area  
Labor Day and through the rest of the week.

.SUNDAY...

Sky/weather.....Sunny (10-20 percent).  
Max temperature.....79-83.  
Min humidity.....15-20 percent.  
Eye level winds....Upslope 3-6 mph.  
Surrounding ridge..South 4-7 mph.  
Mixing height.....9900 ft AGL increasing to 10900 ft AGL in the  
afternoon.  
Transport winds....Northwest around 4 mph.  
Wind (20 ft).....South winds 5 to 6 mph shifting to the west 7  
to 8 mph in the afternoon.

.SUNDAY NIGHT...

Sky/weather.....Mostly clear (5-15 percent).  
Min temperature.....56-60.  
Max humidity.....30-35 percent.  
Eye level winds....Downslope 1-4 mph.  
Surrounding ridge..Variable 1-4 mph.  
Mixing height.....Lowering to less than 500 ft AGL.  
Transport winds....Northeast around 7 mph.  
Wind (20 ft).....Northeast winds 5 to 6 mph shifting to the east  
6 to 7 mph overnight.

.LABOR DAY...

Sky/weather.....Mostly sunny (30-40 percent). Slight chance of  
showers in the afternoon.  
Max temperature.....80-84.  
Min humidity.....17-22 percent.  
Eye level winds....Upslope 3-6 mph.  
Surrounding ridge..South 4-7 mph.  
Mixing height.....9700 ft AGL increasing to 11000 ft AGL late in  
the afternoon.  
Transport winds....East around 8 mph.  
Wind (20 ft).....East winds 7 to 9 mph shifting to the south  
around 6 mph in the afternoon.

.FORECAST DAYS 3 THROUGH 5..

.TUESDAY...

Mostly clear. Lows in the lower 60s. Highs around 85. Northeast  
winds around 6 mph.

.WEDNESDAY...

Mostly clear. Slight chance of showers. Lows in the lower 60s.  
Highs in the upper 70s. Northeast winds around 6 mph.

.THURSDAY...

Mostly clear. Slight chance of showers and thunderstorms. Lows around 60.  
Highs in the upper 70s. Northeast winds around 6 mph.

Spot Forecast for Rodgers...Yosemite National Park  
National Weather Service Hanford CA  
754 PM PDT Sat Sep 3 2022

Forecast is based on forecast start time of 0600 PDT on September 04.  
If conditions become unrepresentative...contact the National Weather  
Service.

.DISCUSSION...

A dangerous heat wave will persist through at least the middle of  
next week as a strong ridge of high pressure remains dominant.  
High temperatures each afternoon Sunday through Wednesday will be  
around fifteen degrees above normal for this time of year. A few  
showers and thunderstorms are possible in the higher terrain of  
the Sierra Nevada each afternoon Sunday through Thursday.

.SUNDAY...

Sky/weather.....Sunny (15-25 percent).  
Max temperature.....84-88.  
Min humidity.....13-18 percent.  
Eye level winds.....Upslope 3-6 mph.  
Surrounding ridge...South to southwest 4-8 mph.  
Mixing height.....9500 ft AGL increasing to 10400 ft AGL in the  
afternoon.  
Transport winds.....West around 5 mph.  
Wind (20 ft).....Southeast winds 5 to 6 mph shifting to the west  
7 to 8 mph in the afternoon.

.SUNDAY NIGHT...

Sky/weather.....Mostly clear (10-20 percent).  
Min temperature.....58-62.  
Max humidity.....34-38 percent.  
Eye level winds.....Downslope 2-4 mph.  
Surrounding ridge...Variable 2-5 mph.  
Mixing height.....Lowering to less than 500 ft AGL.  
Transport winds.....Northeast around 7 mph.  
Wind (20 ft).....North winds 5 to 6 mph shifting to the  
northeast overnight.

.LABOR DAY...

Sky/weather.....Mostly sunny (30-40 percent).  
Max temperature.....84-89.  
Min humidity.....13-18 percent.  
Eye level winds.....Upslope 3-6 mph.  
Surrounding ridge...South to southwest 4-8 mph.  
Mixing height.....5900 ft AGL increasing to 13300 ft AGL in the  
afternoon.  
Transport winds.....East around 9 mph.  
Wind (20 ft).....Northeast winds 6 to 7 mph shifting to the  
south around 6 mph in the afternoon.

.FORECAST DAYS 3 THROUGH 5...

.TUESDAY...

Mostly clear. Lows in the upper 50s. Highs around 90. East winds  
around 5 mph.

.WEDNESDAY...

Mostly clear. Slight chance of showers. Lows in the upper 50s.  
Highs in the upper 80s. East winds around 5 mph.

.THURSDAY...

Mostly clear. Lows in the upper 50s. Highs around 80.  
Northeast winds around 5 mph.

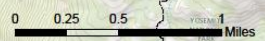


119°36.01'W 119°35.5'W 119°35'W 119°34.5'W 119°34'W 119°33.5'W 119°33'W 119°32.5'W 119°32'W 119°31.5'W 119°31'W 119°30.5'W 119°30'W 119°29.5'W 119°29'W 119°28.51'W 119°28'W 119°27.5'W 119°27'W

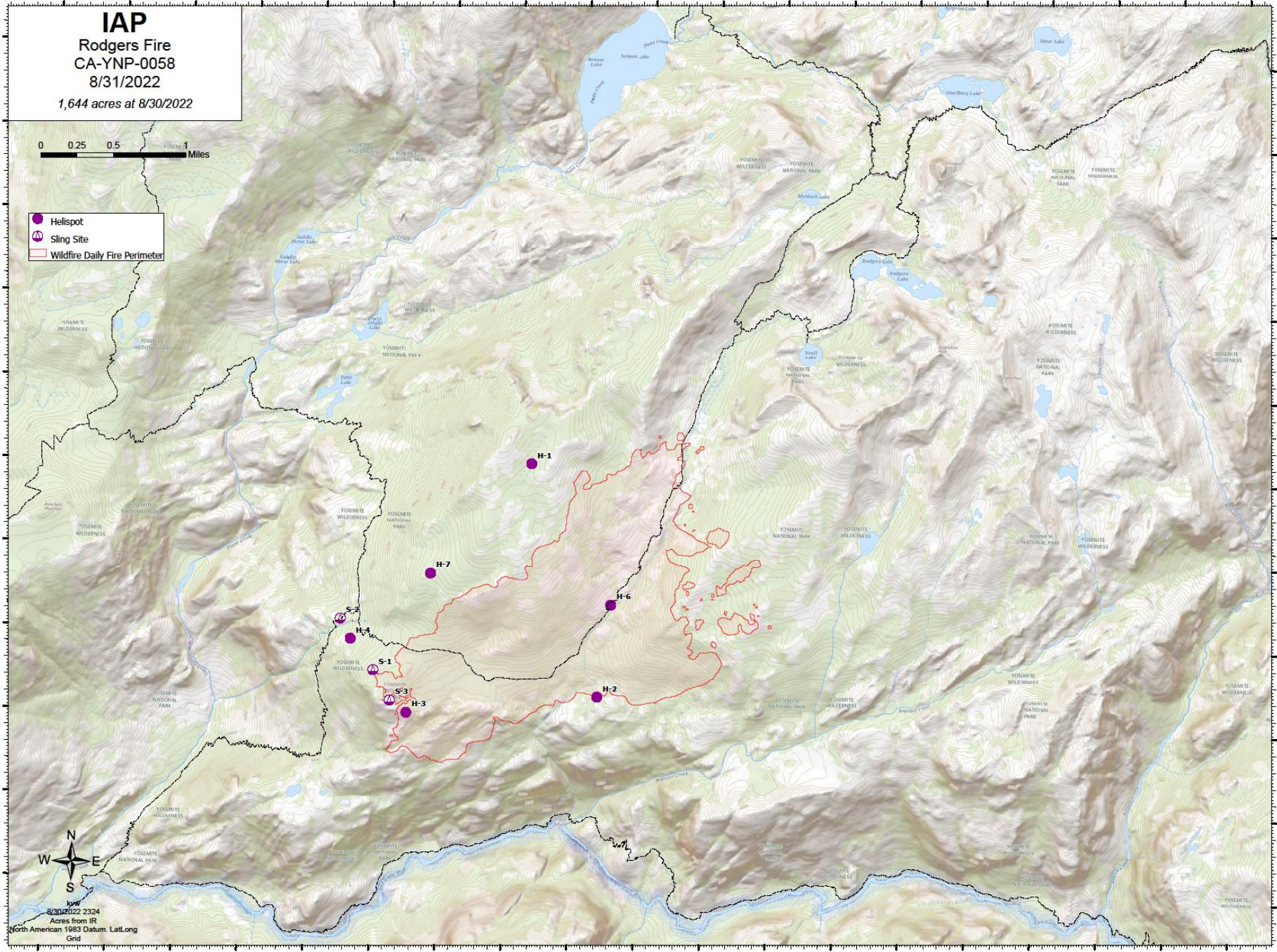
38°1'N  
38°0.5'N  
38°N  
37°59.5'N  
37°59'N  
37°58.5'N  
37°58'N  
37°57.5'N  
37°57'N  
37°56.5'N  
37°56'N

38°1'N  
38°0.5'N  
38°N  
37°59.5'N  
37°59'N  
37°58.5'N  
37°58'N  
37°57.5'N  
37°57'N  
37°56.5'N  
37°56'N

**IAP**  
Rodgers Fire  
CA-YNP-0058  
8/31/2022  
1,644 acres at 8/30/2022



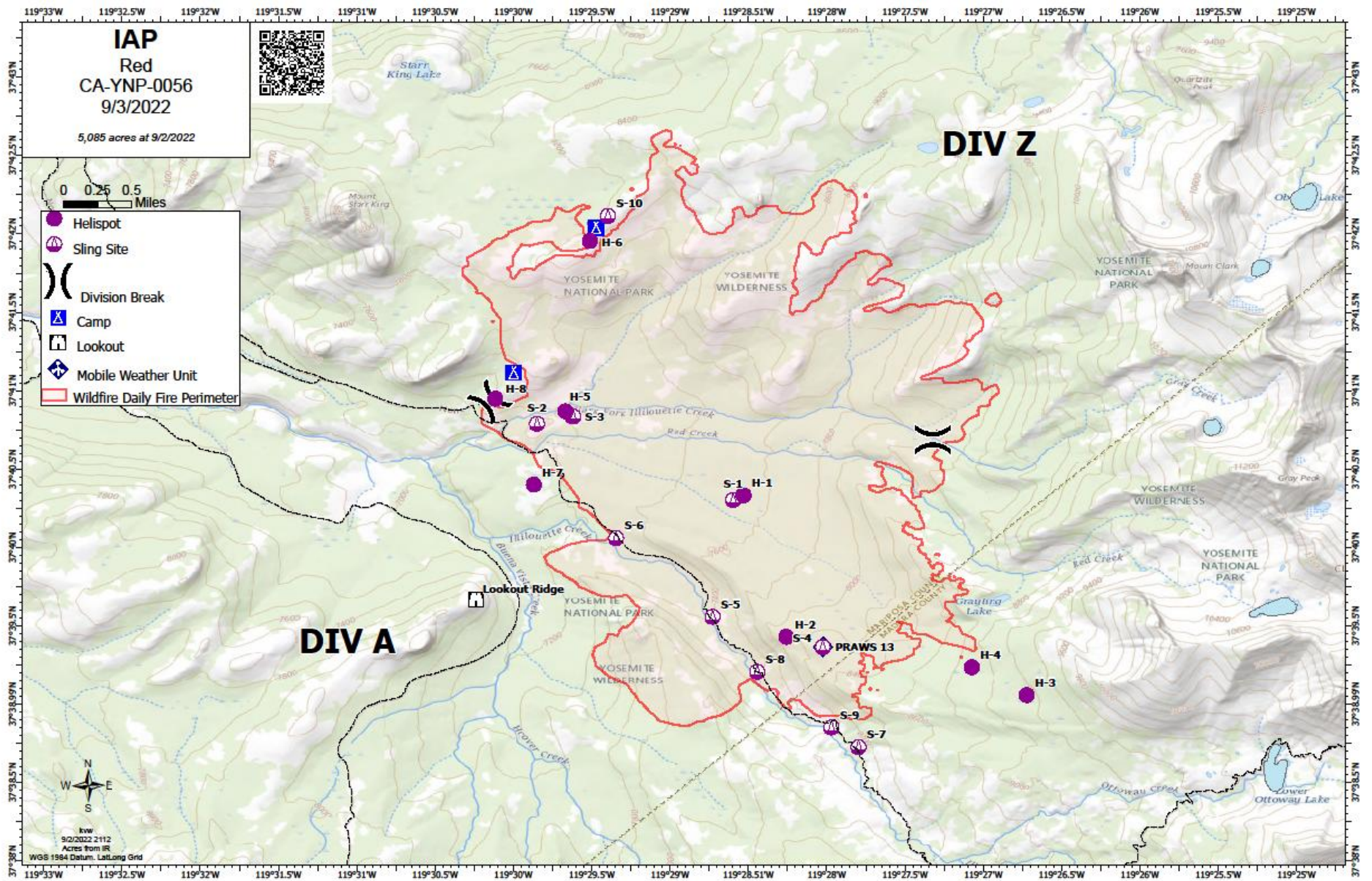
- Helispot
- Ⓢ Sling Site
- ▭ Wildfire Daily Fire Perimeter



8/30/2022 2324  
Acres from IR  
North American 1983 Datum, Lat,Long  
Grid

119°36.01'W 119°35.5'W 119°35'W 119°34.5'W 119°34'W 119°33.5'W 119°33'W 119°32.5'W 119°32'W 119°31.5'W 119°31'W 119°30.5'W 119°30'W 119°29.5'W 119°29'W 119°28.51'W 119°28'W 119°27.5'W 119°27'W





**Medical Incident Report**

**FOR A NON-EMERGENCY INCIDENT, WORK THROUGH CHAIN OF COMMAND TO REPORT AND TRANSPORT INJURED PERSONNEL AS NECESSARY.**  
**FOR A MEDICAL EMERGENCY: IDENTIFY ON SCENE INCIDENT COMMANDER BY NAME AND POSITION AND ANNOUNCE**  
**"MEDICAL EMERGENCY" TO INITIATE RESPONSE FROM IMT COMMUNICATIONS/DISPATCH.**

**Use the following items to communicate situation to communications/dispatch**

**1. CONTACT COMMUNICATIONS / DISPATCH (Verify correct frequency prior to starting report)**

*Ex: "Communications, Div. Alpha. Stand-by for Emergency Traffic."*

**2. INCIDENT STATUS: Provide incident summary (including number of patients) and command structure.**

*Ex: "Communications, I have a Red priority patient, unconscious, struck by a falling tree. Requesting air ambulance to Forest Road 1 at (Lat./Long.) This will be the Trout Meadow Medical, IC is TFLD Jones. EMT Smith is providing medical care."*

Severity of Emergency / Transport Priority	<input type="checkbox"/> <b>RED / PRIORITY 1 Life or limb threatening injury or illness. Evacuation need is IMMEDIATE</b> <i>Ex: Unconscious, difficulty breathing, bleeding severely, 2° – 3° burns more than 4 palm sizes, heat stroke, disoriented.</i> <input type="checkbox"/> <b>YELLOW / PRIORITY 2 Serious Injury or illness. Evacuation may be DELAYED if necessary.</b> <i>Ex: Significant trauma, unable to walk, 2° – 3° burns not more than 1-3 palm sizes.</i> <input type="checkbox"/> <b>GREEN / PRIORITY 3 Minor Injury or illness. Non-Emergency transport</b> <i>Ex: Sprains, strains, minor heat-related illness.</i>
Nature of Injury or Illness & Mechanism of Injury	Brief Summary of Injury or Illness (Ex: Unconscious, Struck by Falling Tree)
Transport Request	Air Ambulance / Short Haul/Hoist Ground Ambulance / Other
Patient Location	Descriptive Location & Lat. / Long. (WGS84)
Incident Name	Geographic Name + "Medical" (Ex: Trout Meadow Medical)
On-Scene Incident Commander	Name of on-scene IC of Incident within an Incident (Ex: TFLD Jones)
Patient Care	Name of Care Provider (Ex: EMT Smith)

**3. INITIAL PATIENT ASSESSMENT: Complete this section for each patient as applicable (start with the most severe patient)**

Patient Assessment: See IRPG page 106

Treatment:

**4. TRANSPORT PLAN:**

Evacuation Location (if different): (Descriptive Location (drop point, intersection, etc.) or Lat. / Long.) Patient's ETA to Evacuation Location:

Helispot / Extraction Site Size and Hazards:

**5. ADDITIONAL RESOURCES / EQUIPMENT NEEDS:**

*Example: Paramedic/EMT, Crews, Immobilization Devices, AED, Oxygen, Trauma Bag, IV/Fluid(s), Splints, Rope rescue, Wheeled litter, HAZMAT, Extraction*

**6. COMMUNICATIONS: Identify State Air/Ground EMS Frequencies and Hospital Contacts as applicable**

Function	Channel Name/Number	Receive (RX)	Tone/NAC *	Transmit (TX)	Tone/NAC *
COMMAND					
AIR-TO-GRND					
TACTICAL					

**7. CONTINGENCY: Considerations:** If primary options fail, what actions can be implemented in conjunction with primary evacuation method? Be thinking ahead.

**8. ADDITIONAL INFORMATION:** Updates/Changes, etc.

**REMEMBER: Confirm ETA's of resources ordered. Act according to your level of training. Be Alert. Keep Calm. Think Clearly. Act Decisively.**