
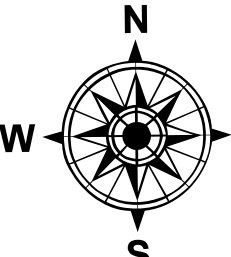


# Repair Map

Cowtrack  
CAINF-001075  
08/05/2023 24hr

323 acres at 07/31/2023 1200


### Repair Status

- In Use - Fire Management
- Needs Assessment
- Repair Needed
- In Progress
- Completed - Ready for Inspection
- Completed - Inspected
- No Repair Needed
- Other - See Comments

### Incident Features

- Pump
- Helispot
- Division Break
- Drop Point
- Road Repair
- Repair Point
- Clean Up Area
- Mobile Weather Unit
- Water Source
- Completed Burnout
- Completed Hand Line
- Planning Management Unit
- Fire Perimeter
- Perennial Waterbody
- Intermittent Waterbody
- Perennial Streams & Rivers
- Intermittent Streams & Rivers
- Township
- Sections
- State Hwy
- Unknown Route
- 4WD
- State Boundary
- Woodland
- No Staging Area
- Bureau of Land Management
- Forest Service

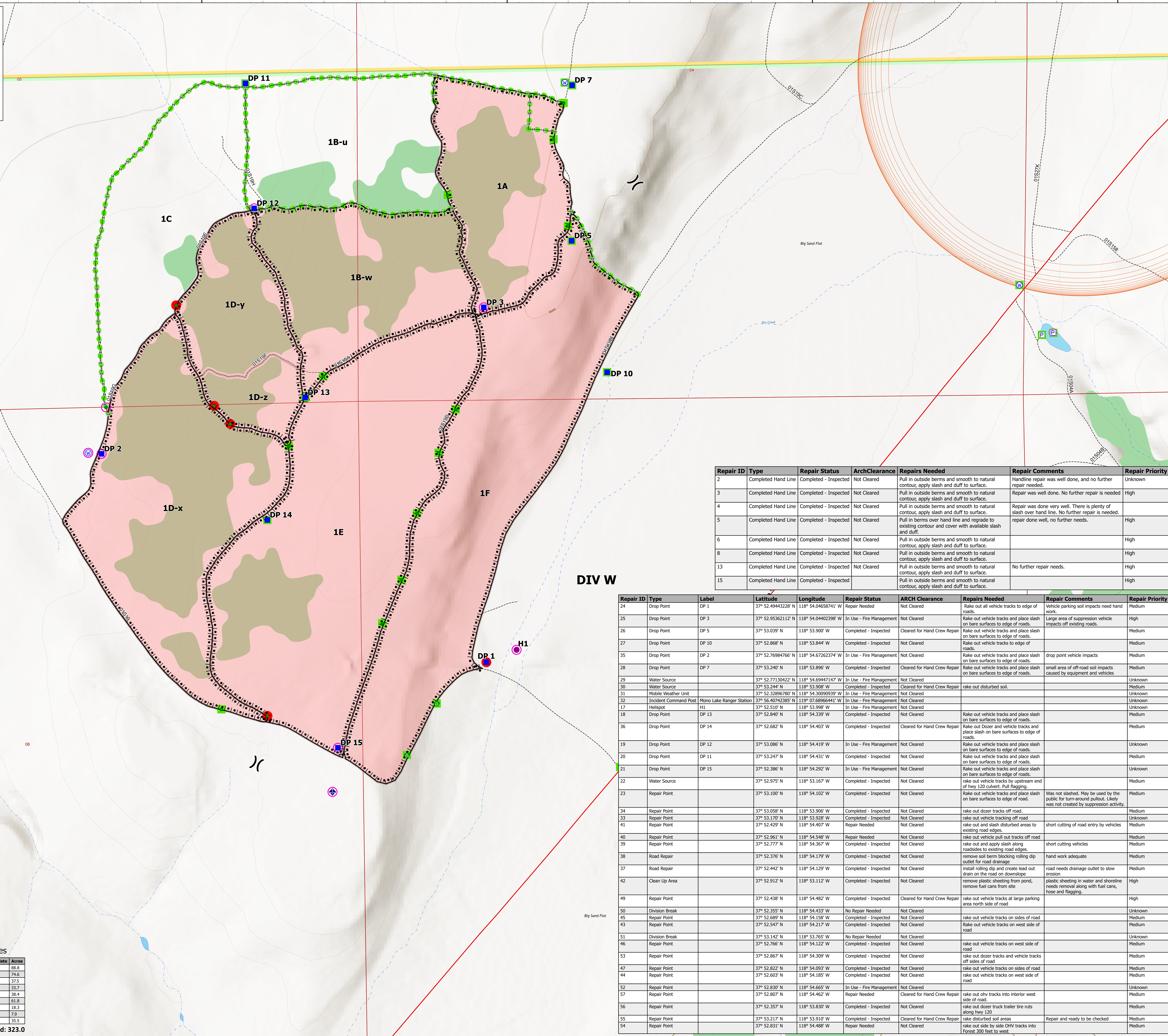


#### Management Unit Acres

Unit	Completion Status	Date Complete	Acres
1E	Complete	31 Jul 2023	88.8
1F	Complete	27 Jul 2023	74.6
1B-w	Complete	28 Jul 2023	37.5
1A	Complete	28 Jul 2023	33.7
1C	Not Planned		38.4
1D-x	Complete	30 Jul 2023	61.8
1D-y	Complete	29 Jul 2023	18.3
1D-z	Complete	29 Jul 2023	7.9
1B-u	Not Planned		35.5

**Total Acres Burned: 323.0**

MJT - Interagency Type 3 Org  
8/4/2023 2144  
Acres from GPS  
North American 1983 Datum, LatLong Grid



Repair ID	Type	Repair Status	ArchClearance	Repairs Needed	Repair Comments	Repair Priority
2	Completed Hand Line	Completed - Inspected	Not Cleared	Pull in outside berms and smooth to natural contour, apply slash and duff to surface.	Handline repair was well done, and no further repair needed.	Unknown
3	Completed Hand Line	Completed - Inspected	Not Cleared	Pull in outside berms and smooth to natural contour, apply slash and duff to surface.	Repair was well done. No further repair is needed.	High
4	Completed Hand Line	Completed - Inspected	Not Cleared	Pull in outside berms and smooth to natural contour, apply slash and duff to surface.	Repair was done very well. There is plenty of slash over hand line. No further repair is needed.	High
5	Completed Hand Line	Completed - Inspected	Not Cleared	Pull in outside berms and smooth to natural contour, apply slash and duff to surface.	Repair done well, no further needs.	High
6	Completed Hand Line	Completed - Inspected	Not Cleared	Pull in outside berms and smooth to natural contour, apply slash and duff to surface.		High
8	Completed Hand Line	Completed - Inspected	Not Cleared	Pull in outside berms and smooth to natural contour, apply slash and duff to surface.		High
13	Completed Hand Line	Completed - Inspected	Not Cleared	Pull in outside berms and smooth to natural contour, apply slash and duff to surface.	No further repair needs.	High
15	Completed Hand Line	Completed - Inspected	Not Cleared	Pull in outside berms and smooth to natural contour, apply slash and duff to surface.		High

Repair ID	Type	Label	Latitude	Longitude	Repair Status	ARCH Clearance	Repairs Needed	Repair Comments	Repair Priority
24	Drop Point	DP 1	37° 52.49443228' N	118° 54.04658741' W	Repair Needed	Not Cleared	Rake out all vehicle tracks to edge of roads.	Vehicle parking soil impacts need hand work.	Medium
25	Drop Point	DP 3	37° 52.953621112' N	118° 54.04402398' W	In Use - Fire Management	Not Cleared	Rake out vehicle tracks and place slash on bare surfaces to edge of roads.	Large area of suppression vehicle impacts off existing roads.	High
26	Drop Point	DP 5	37° 53.039' N	118° 53.900' W	Completed - Inspected	Cleared for Hand Crew Repair	Rake out vehicle tracks and place slash on bare surfaces to edge of roads.		Medium
27	Drop Point	DP 10	37° 52.868' N	118° 53.844' W	Completed - Inspected	Not Cleared	Rake out vehicle tracks to edge of roads.		Medium
35	Drop Point	DP 2	37° 52.76984766' N	118° 54.67262374' W	In Use - Fire Management	Not Cleared	Rake out vehicle tracks and place slash on bare surfaces to edge of roads.	drop point vehicle impacts	Medium
38	Drop Point	DP 7	37° 53.240' N	118° 53.896' W	Completed - Inspected	Cleared for Hand Crew Repair	Rake out vehicle tracks and place slash on bare surfaces to edge of roads.	small area of off-road soil impacts caused by equipment and vehicles	Medium
29	Water Source		37° 52.77130422' N	118° 54.69447147' W	In Use - Fire Management	Not Cleared			Unknown
30	Water Source		37° 53.244' N	118° 53.908' W	Completed - Inspected	Cleared for Hand Crew Repair	rake out disturbed soil.		Medium
31	Mobile Weather Unit		37° 52.32896780' N	118° 54.30099329' W	Not Cleared	Not Cleared			Unknown
32	Incident Command Post	Mono Lake Ranger Station	37° 56.40742385' N	119° 07.68966441' W	In Use - Fire Management	Not Cleared			Unknown
17	Helispot	H1	37° 52.510' N	118° 53.998' W	In Use - Fire Management	Not Cleared			Unknown
18	Drop Point	DP 13	37° 52.840' N	118° 54.339' W	Completed - Inspected	Not Cleared	Rake out vehicle tracks and place slash on bare surfaces to edge of roads.		Medium
36	Drop Point	DP 14	37° 52.682' N	118° 54.403' W	Completed - Inspected	Cleared for Hand Crew Repair	Rake out dozer and vehicle tracks and place slash on bare surfaces to edge of roads.		Medium
19	Drop Point	DP 12	37° 53.086' N	118° 54.419' W	In Use - Fire Management	Not Cleared	Rake out vehicle tracks and place slash on bare surfaces to edge of roads.		Unknown
20	Drop Point	DP 11	37° 53.247' N	118° 54.431' W	Completed - Inspected	Not Cleared	Rake out vehicle tracks and place slash on bare surfaces to edge of roads.		Medium
21	Drop Point	DP 15	37° 52.386' N	118° 54.292' W	In Use - Fire Management	Not Cleared	Rake out vehicle tracks and place slash on bare surfaces to edge of roads.		Unknown
22	Water Source		37° 52.975' N	118° 53.167' W	Completed - Inspected	Not Cleared	rake out vehicle tracks by upstream end of hwy 120 culvert. Pull flagging.		Medium
23	Repair Point		37° 53.100' N	118° 54.102' W	Completed - Inspected	Not Cleared	Rake out vehicle tracks and place slash on bare surfaces to edge of road.	Was not slashed. May be used by the public for turn-around pullout. Likely was not treated by suppression activity.	Medium
34	Repair Point		37° 53.058' N	118° 53.906' W	Completed - Inspected	Not Cleared	rake out dozer tracks off road.		Medium
33	Repair Point		37° 53.170' N	118° 53.928' W	Completed - Inspected	Not Cleared	rake out vehicle tracking off road.		Unknown
41	Repair Point		37° 52.429' N	118° 54.407' W	Repair Needed	Not Cleared	rake out and slash disturbed areas to existing road edges.	short cutting of road entry by vehicles	Medium
40	Repair Point		37° 52.961' N	118° 54.548' W	Repair Needed	Not Cleared	rake out vehicle pull out tracks off road.		Medium
39	Repair Point		37° 52.777' N	118° 54.367' W	Completed - Inspected	Not Cleared	rake out and apply slash along roadsides to existing road edges.	short cutting vehicles	Medium
38	Road Repair		37° 52.376' N	118° 54.179' W	Completed - Inspected	Not Cleared	remove soil berm blocking rolling dip outlet for road drainage.	hand work adequate	Medium
37	Road Repair		37° 52.442' N	118° 54.129' W	Completed - Inspected	Not Cleared	install rolling dip and create lead out drain on the road on downslope.	road needs drainage outlet to slow erosion	Medium
42	Clean Up Area		37° 52.912' N	118° 53.112' W	Completed - Inspected	Not Cleared	remove plastic sheeting from pond, remove fuel cans from site.	plastic sheeting in water and shoreline needs removal along with fuel cans, hose and flagging.	High
49	Repair Point		37° 52.438' N	118° 54.482' W	Completed - Inspected	Cleared for Hand Crew Repair	rake out vehicle tracks at large parking area north side of road.		High
50	Division Break		37° 52.355' N	118° 54.433' W	No Repair Needed	Not Cleared			Unknown
45	Repair Point		37° 52.689' N	118° 54.158' W	Completed - Inspected	Not Cleared	rake out vehicle tracks on sides of road.		Medium
43	Repair Point		37° 52.547' N	118° 54.217' W	Completed - Inspected	Not Cleared	Rake out vehicle tracks on west side of road.		Medium
51	Division Break		37° 53.142' N	118° 53.765' W	No Repair Needed	Not Cleared			Unknown
46	Repair Point		37° 52.766' N	118° 54.122' W	Completed - Inspected	Not Cleared	rake out vehicle tracks on west side of road.		Medium
53	Repair Point		37° 52.867' N	118° 54.309' W	Completed - Inspected	Not Cleared	rake out dozer tracks and vehicle tracks off sides of road.		Medium
47	Repair Point		37° 52.822' N	118° 54.093' W	Completed - Inspected	Not Cleared	rake out vehicle tracks on sides of road.		Medium
44	Repair Point		37° 52.603' N	118° 54.185' W	Completed - Inspected	Not Cleared	rake out vehicle tracks on west side of road.		Medium
52	Repair Point		37° 52.830' N	118° 54.665' W	In Use - Fire Management	Not Cleared			Unknown
57	Repair Point		37° 52.807' N	118° 54.462' W	Repair Needed	Cleared for Hand Crew Repair	rake out ohv tracks into interior west side of road.		Medium
56	Repair Point		37° 52.357' N	118° 53.830' W	Completed - Inspected	Not Cleared	rake out dozer truck trailer tire ruts along hwy 120.		Medium
55	Repair Point		37° 53.217' N	118° 53.910' W	Completed - Inspected	Cleared for Hand Crew Repair	rake disturbed soil areas.	Repair and ready to be checked	Medium
54	Repair Point		37° 52.831' N	118° 54.488' W	Repair Needed	Not Cleared	rake out side by side OHV tracks into Forest 300 feet to west.		Medium