







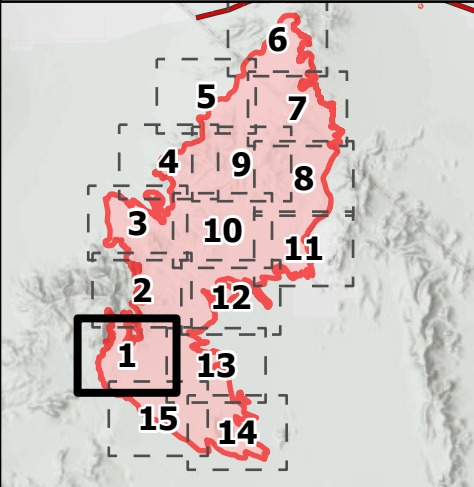
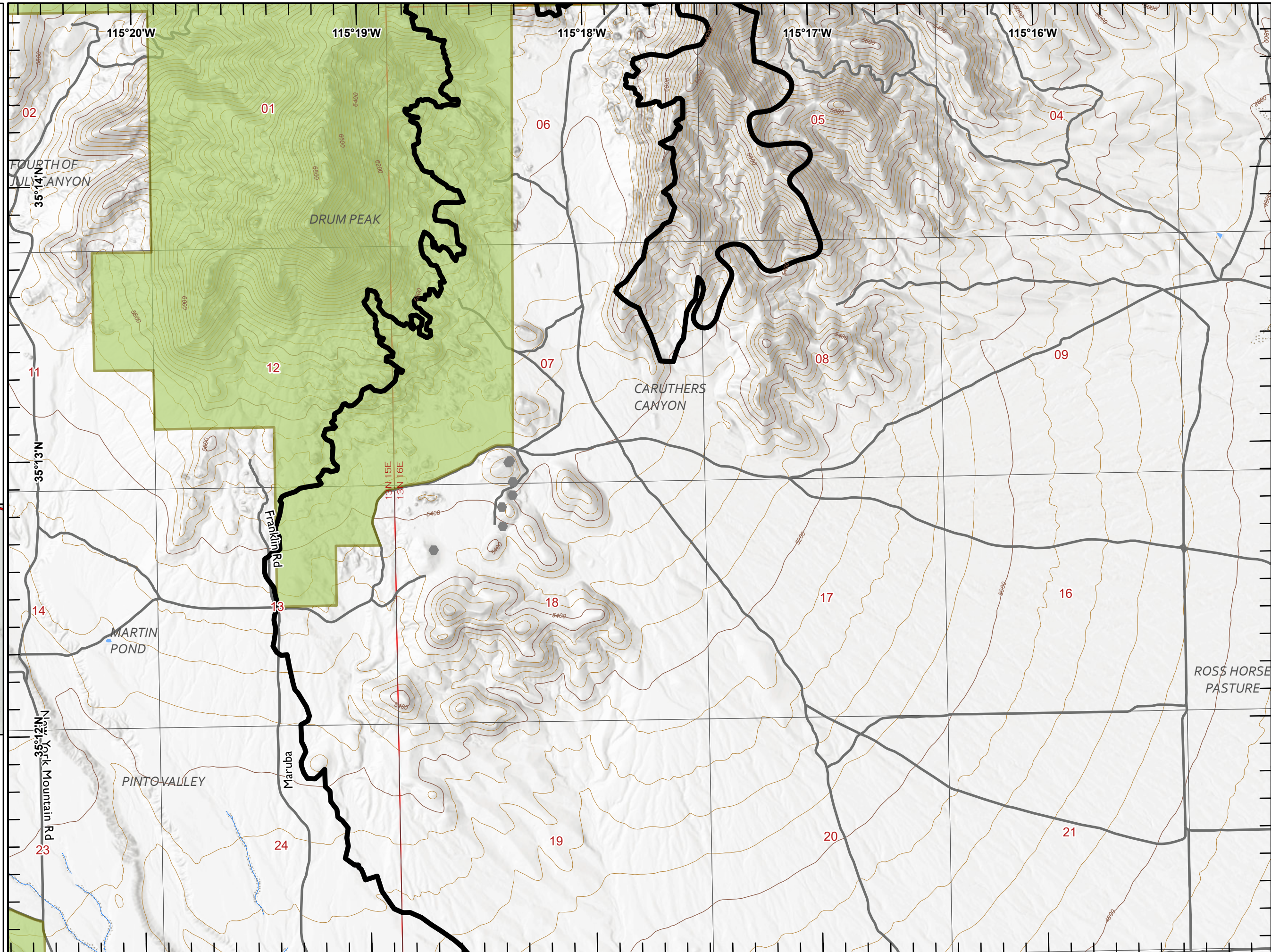


IAP YORK

CA-MNP-010701
August 4, 2023


-  Open Mine
-  Contained
-  State Boundary
-  Designated Wilderness



Miles
0 1/4 1/2





1:24,000

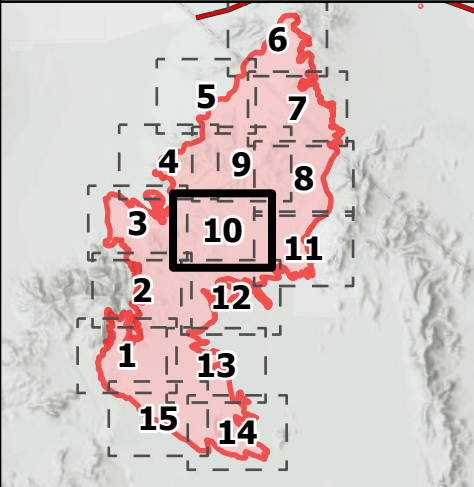
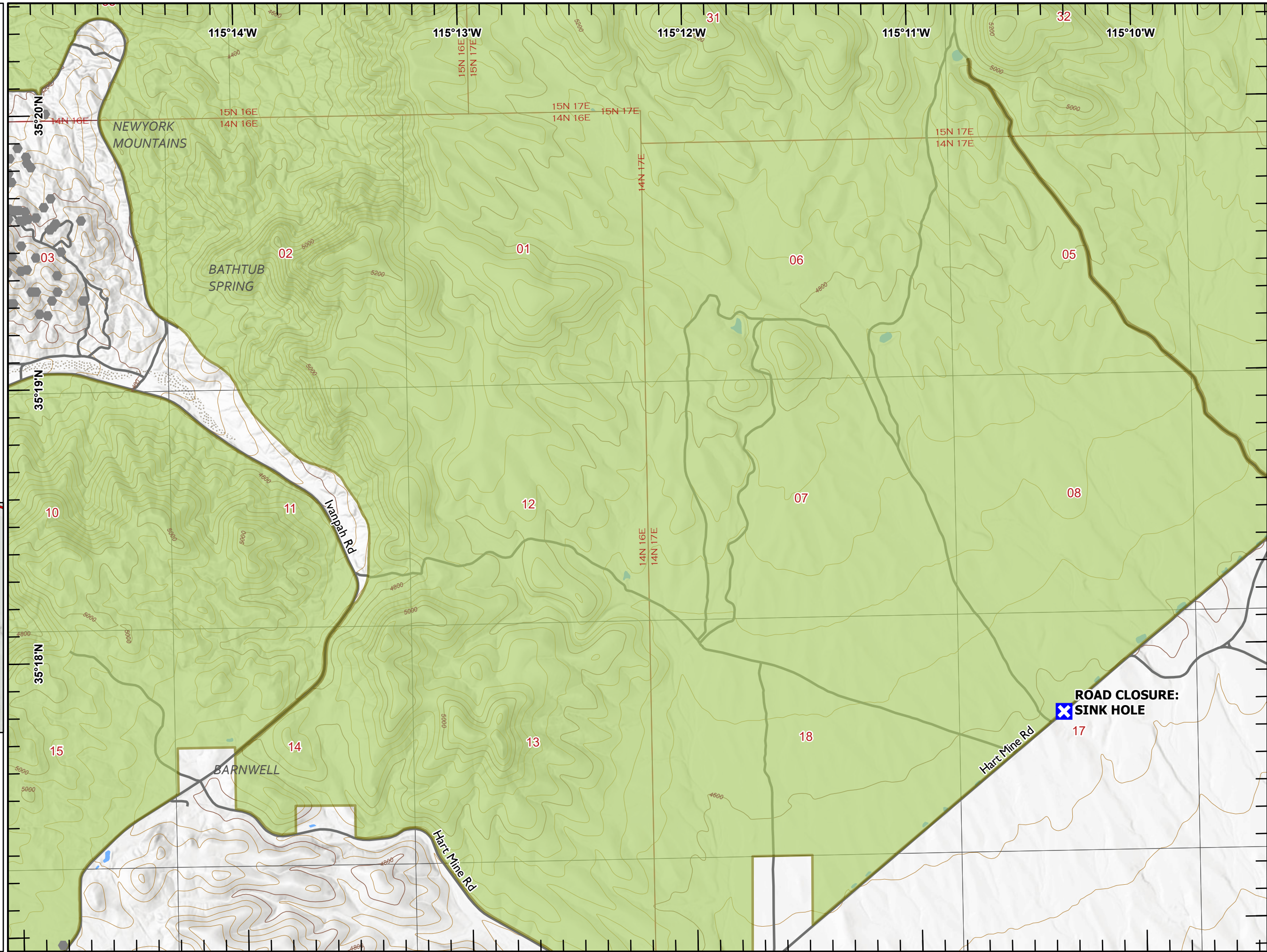
Last Updated
8/3/2023
21:30



IAP YORK

CA-MNP-010701
August 4, 2023

-  Closure
-  Open Mine
-  State Boundary
-  Designated Wilderness








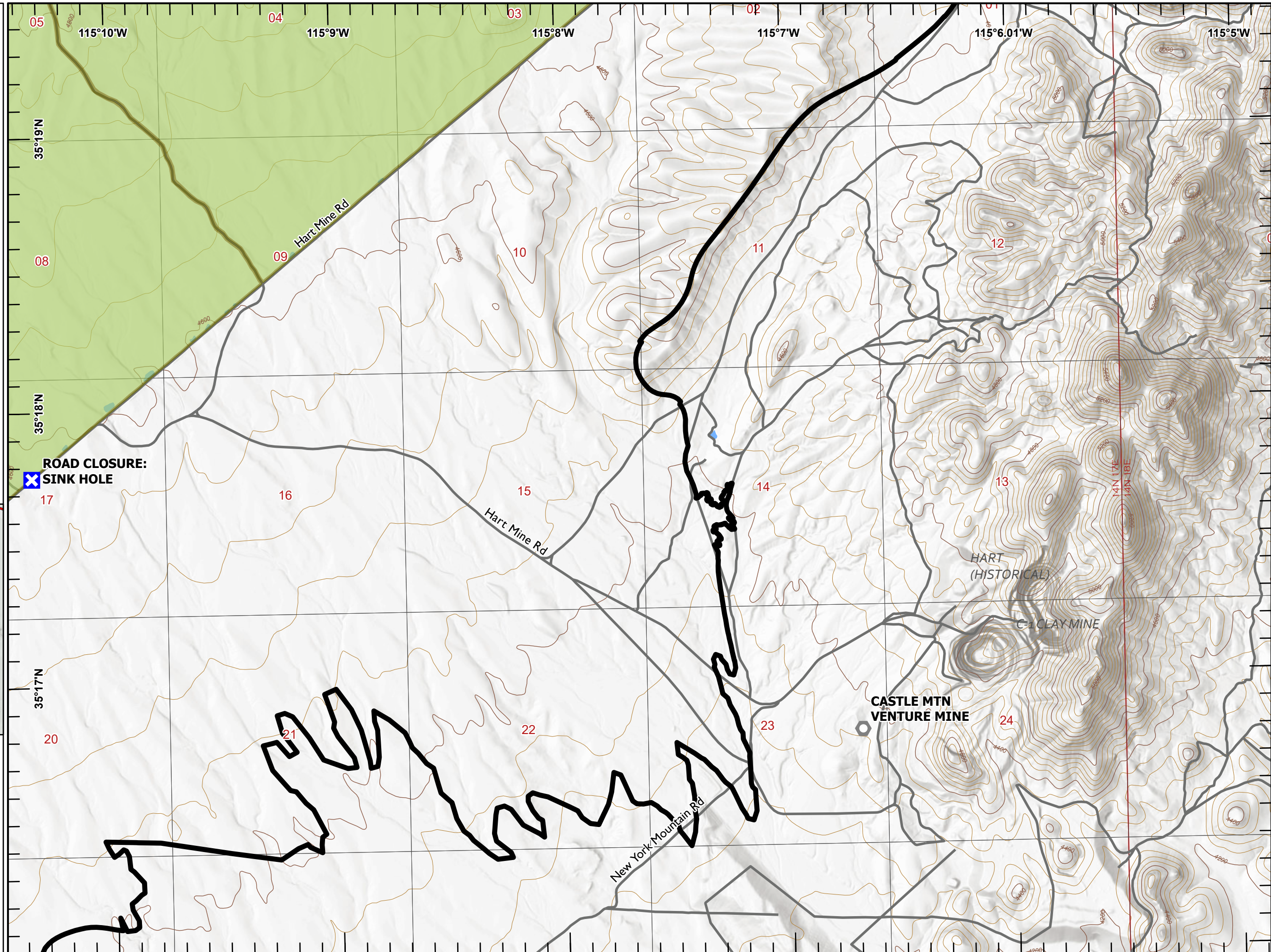
Miles
0 1/4 1/2
1:24,000
Last Updated
8/3/2023
21:30



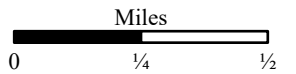
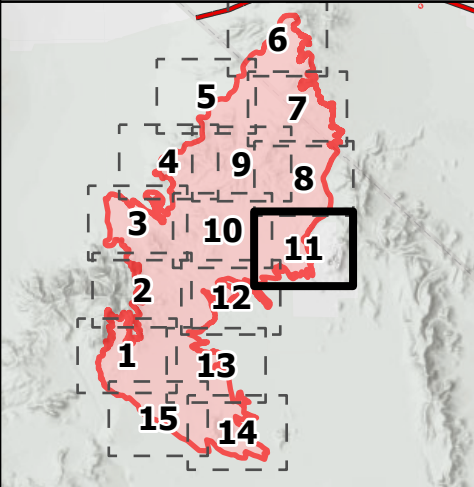
IAP YORK

CA-MNP-010701
August 4, 2023

-  Closure
-  Landmark
-  Contained
-  State Boundary
-  Designated Wilderness



**ROAD CLOSURE:
SINK HOLE**



1:24,000

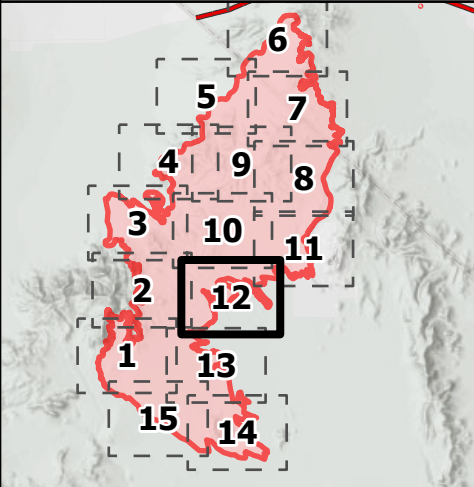
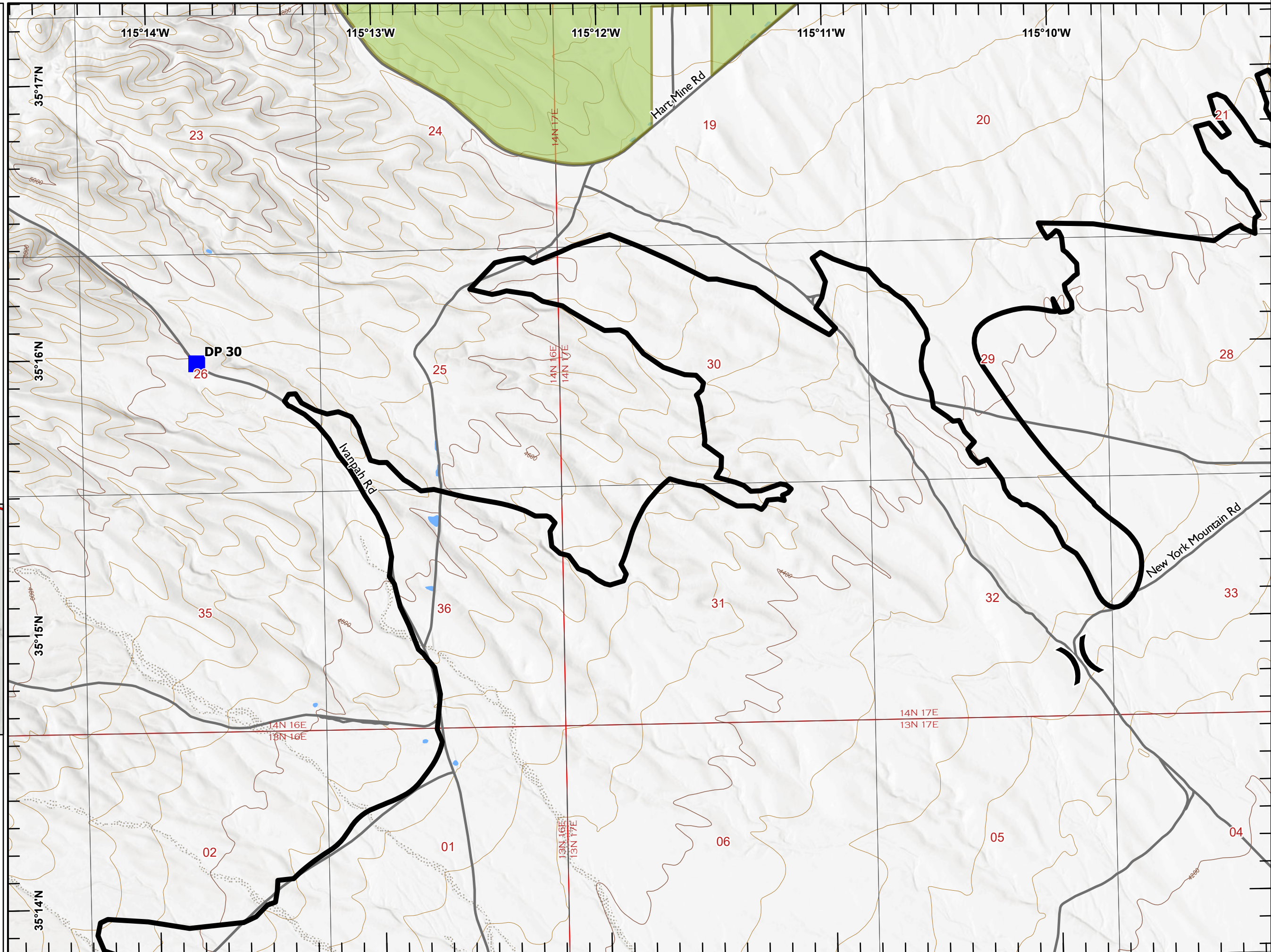
Last Updated
8/3/2023
21:31



IAP YORK

CA-MNP-010701
August 4, 2023



- Division Break
- Drop Point
- Contained
- State Boundary
- Designated Wilderness

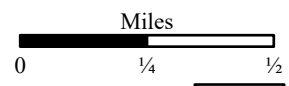
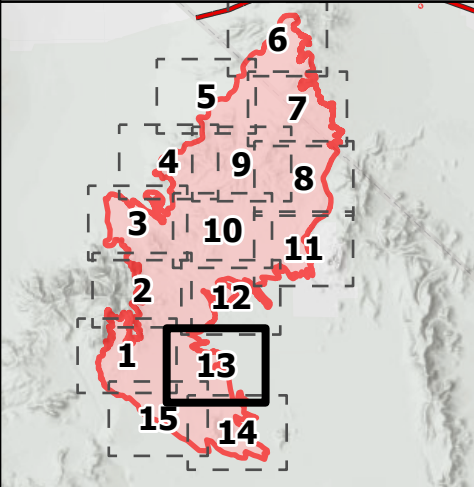
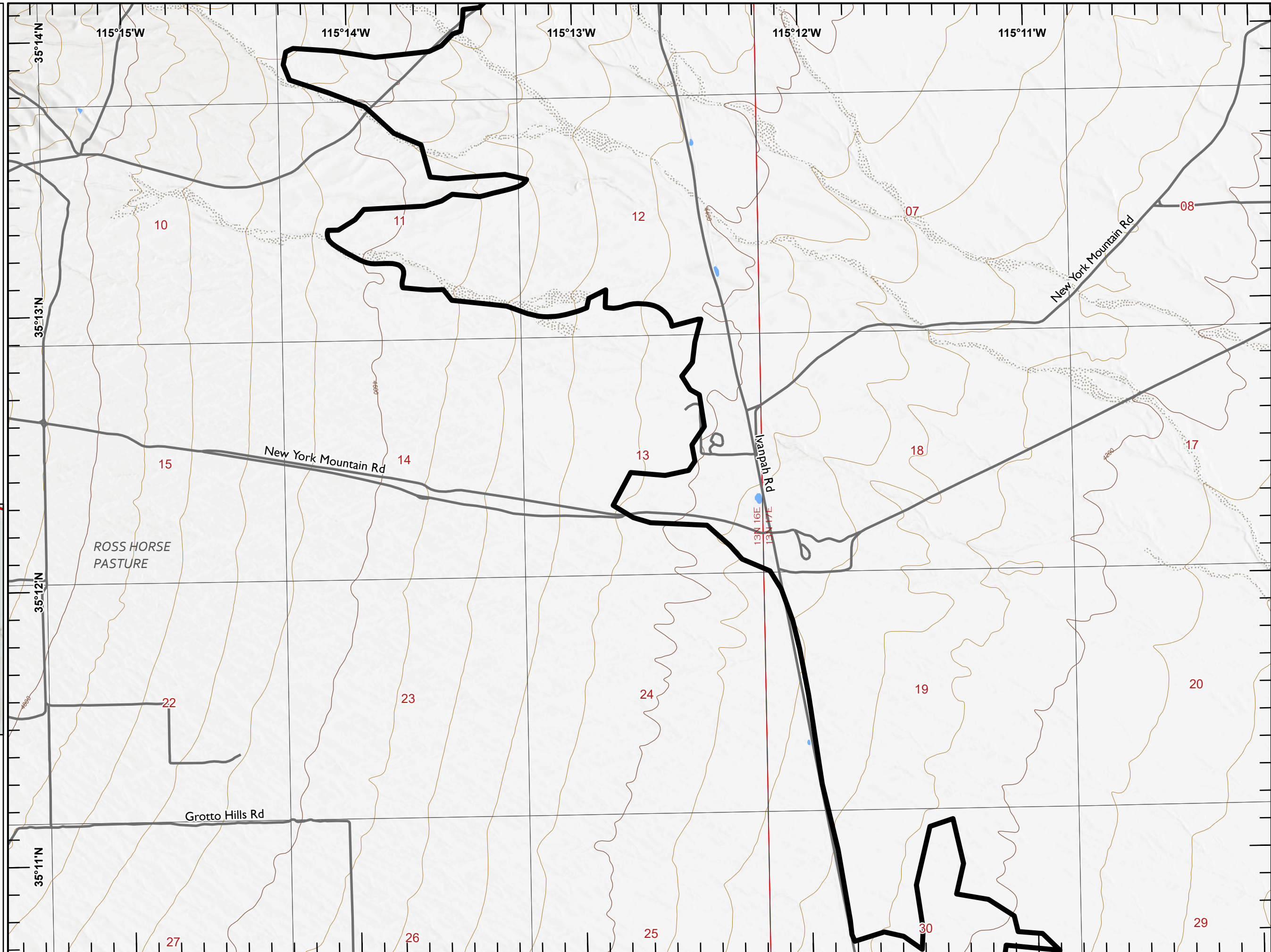


A QR code is located at the top left of this section. Below it are three logos: California Emergency Incident Management, National Park Service, and U.S. Department of the Interior. A scale bar shows 0, 1/4, and 1/2 miles. The scale is 1:24,000. A north arrow is at the bottom right. A box contains the text: Last Updated 8/3/2023 21:31.

IAP YORK

CA-MNP-010701
August 4, 2023

-  Contained
-  State Boundry






1:24,000





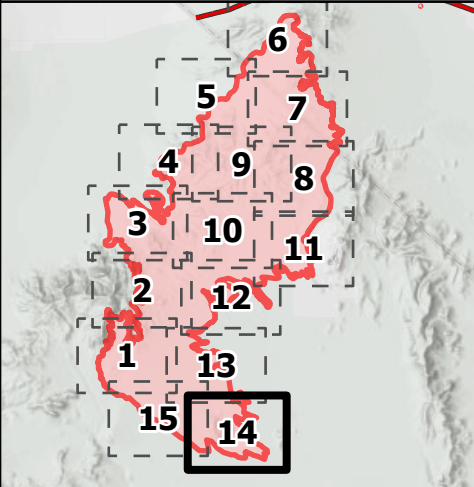
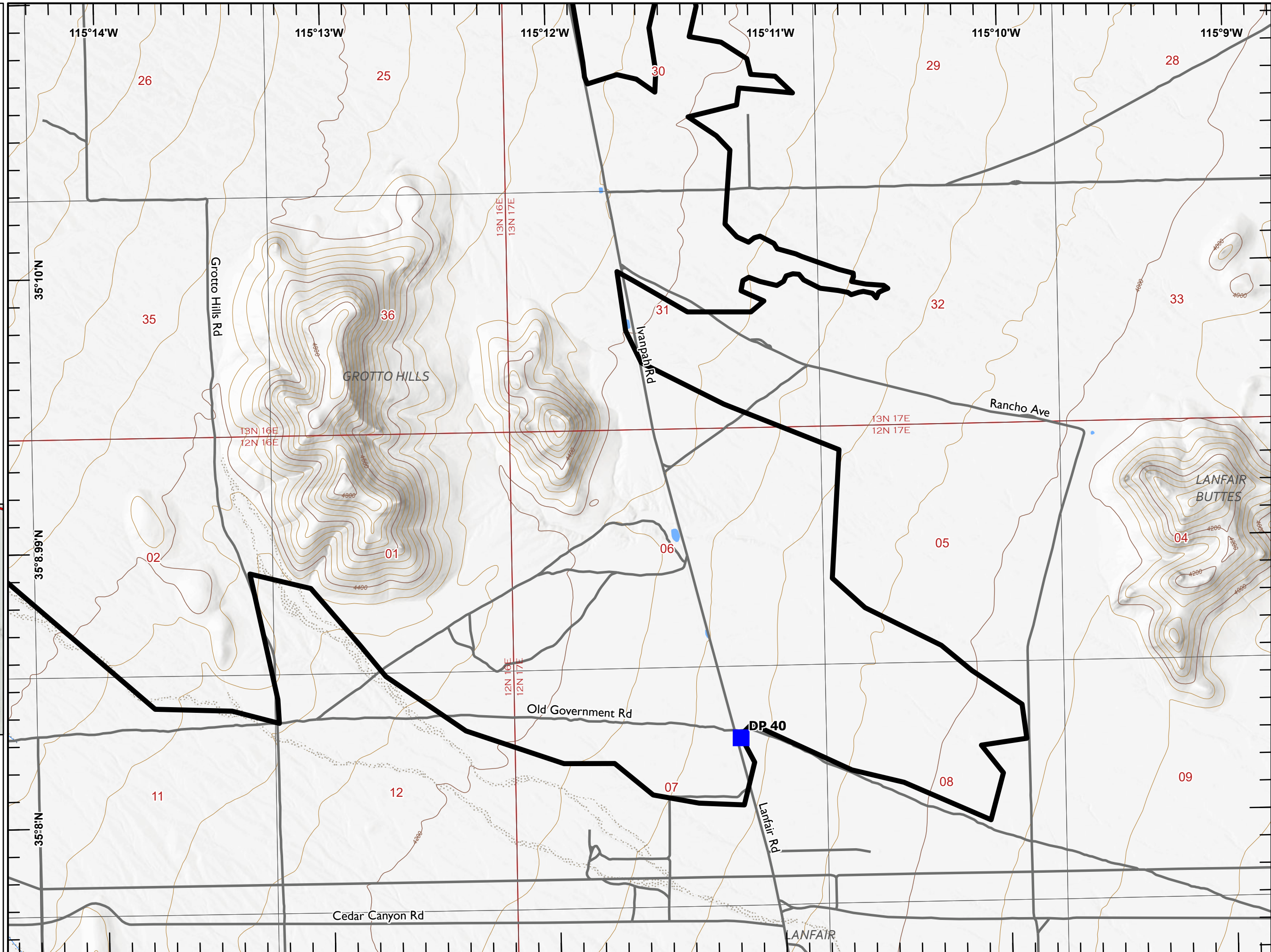
Last Updated
8/3/2023
21:31



IAP YORK

CA-MNP-010701
August 4, 2023


-  Drop Point
-  Contained
-  State Boundary



Miles
0 1/4 1/2




1:24,000

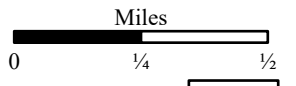
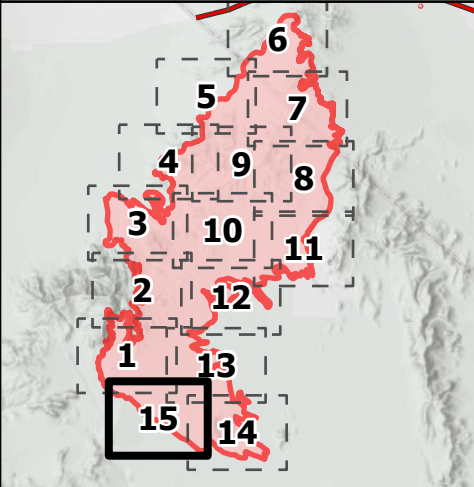
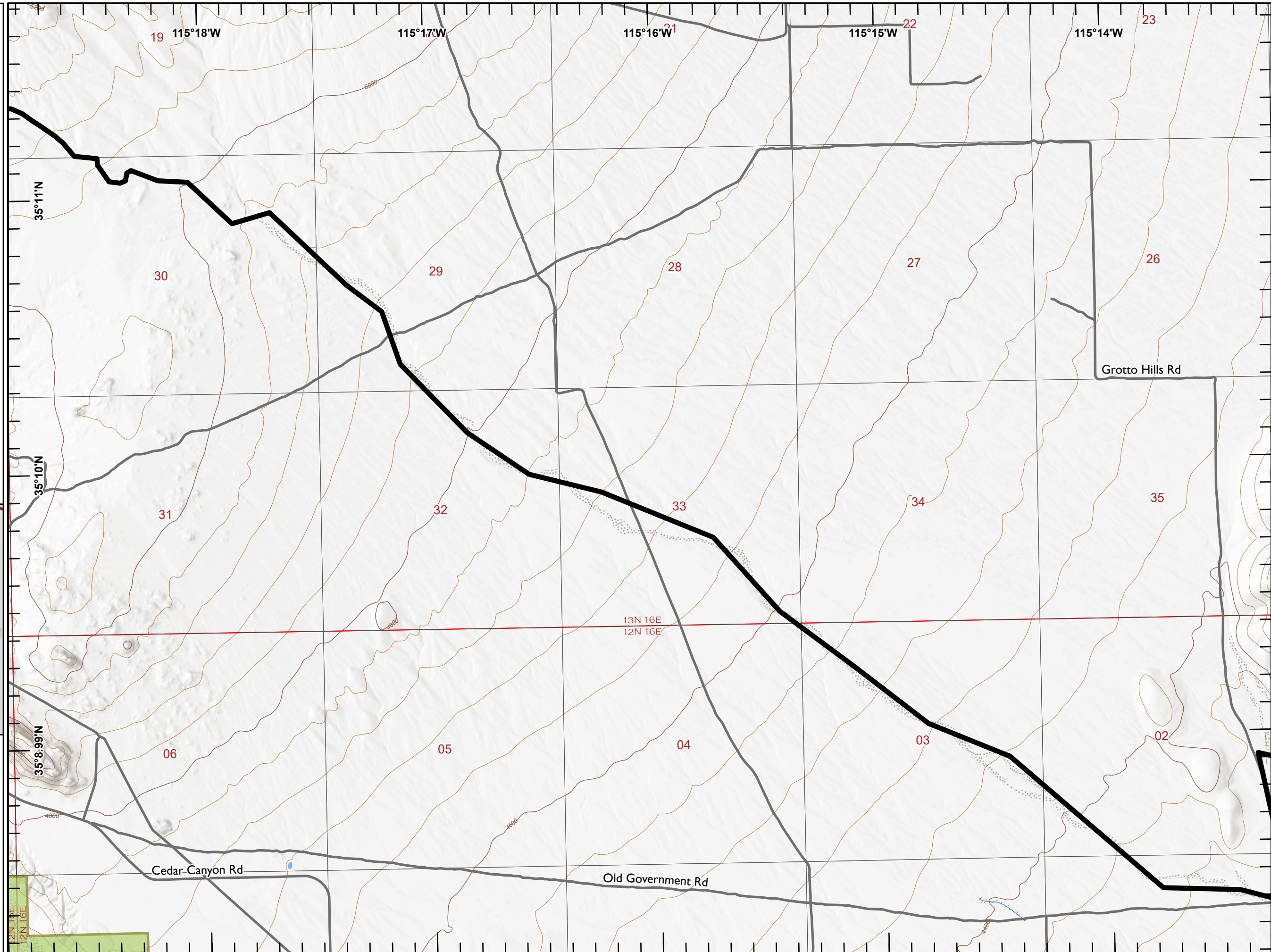
Last Updated
8/3/2023
21:31



IAP YORK

CA-MNP-010701
August 4, 2023

-  Contained
-  State Boundry
-  Designated Wilderness












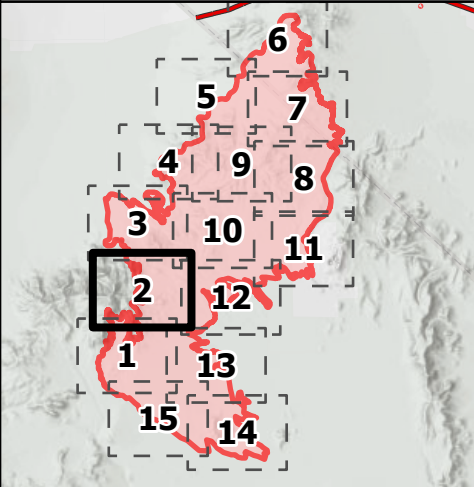
1:24,000
Last Updated
8/3/2023
21:31



IAP YORK

CA-MNP-010701
August 4, 2023

-  Open Mine
-  Contained
-  Uncontained
-  State Boundary
-  Designated Wilderness

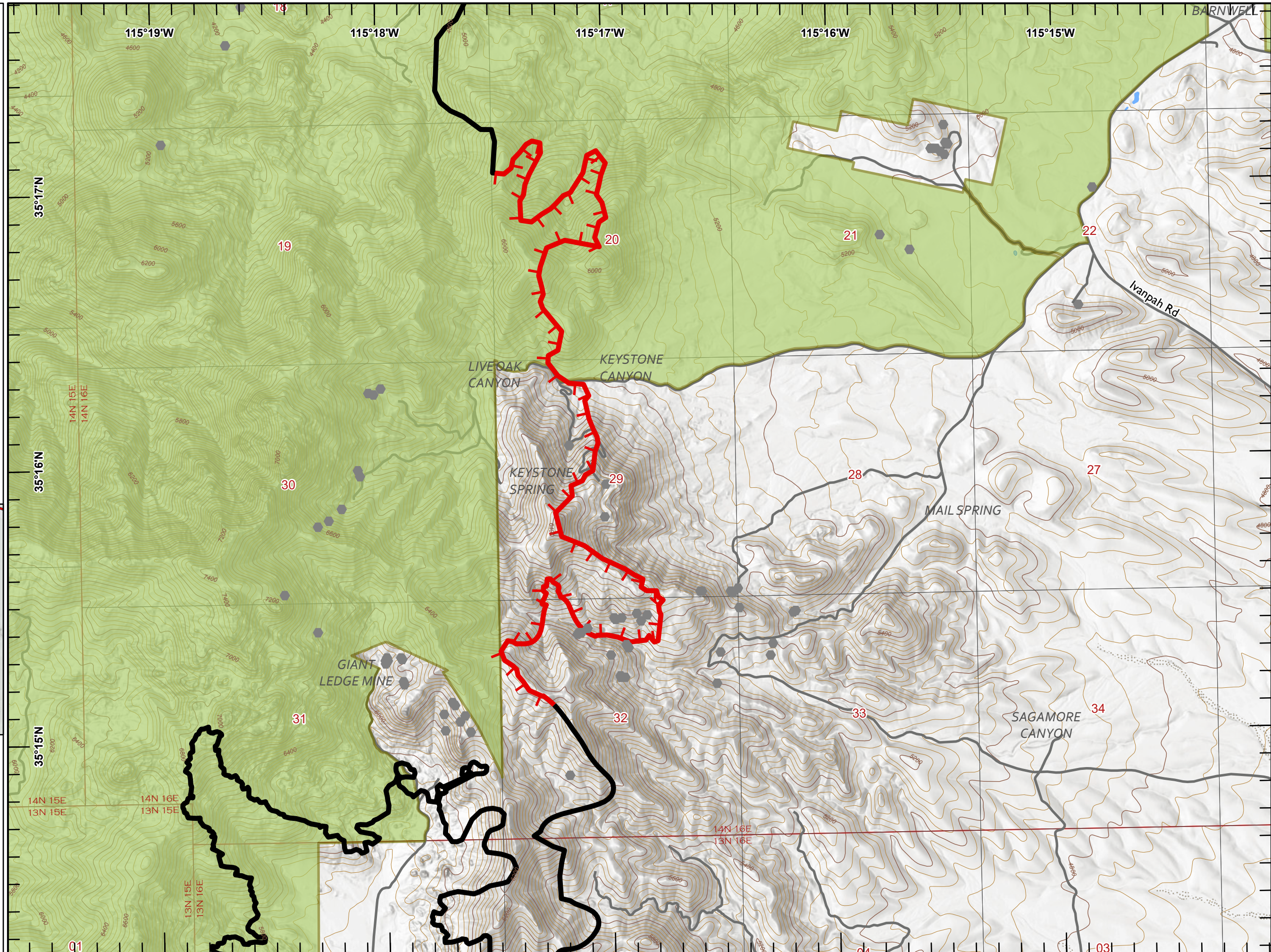



Miles

0 1/4 1/2







1:24,000


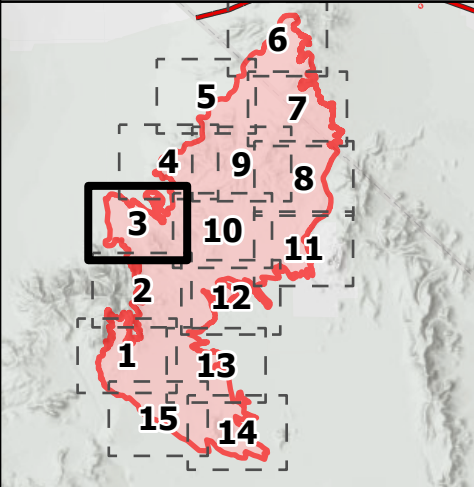
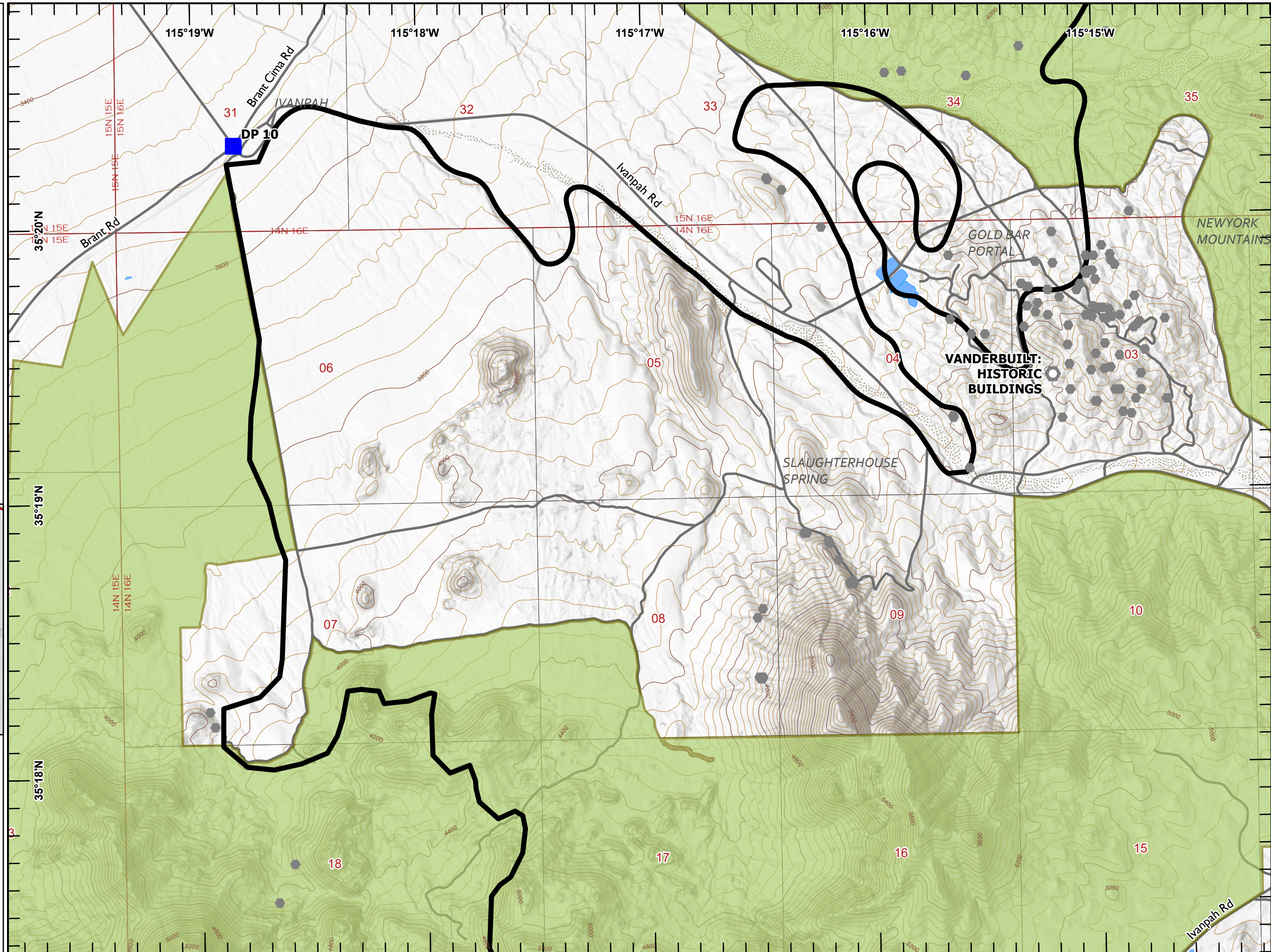
Last Updated
8/3/2023
21:31




IAP YORK

CA-MNP-010701
August 4, 2023

-  Drop Point
-  Open Mine
-  Landmark
-  Contained
-  State Boundary
-  Designated Wilderness







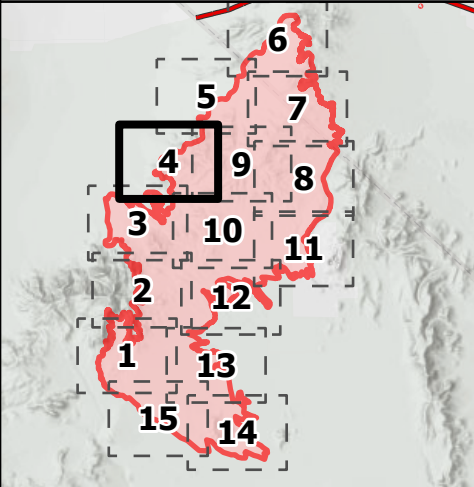
Miles
0 1/4 1/2
1:24,000
Last Updated
8/3/2023
21:32



IAP YORK

CA-MNP-010701
August 4, 2023

-  Open Mine
-  Contained
-  State Boundary
-  Designated Wilderness

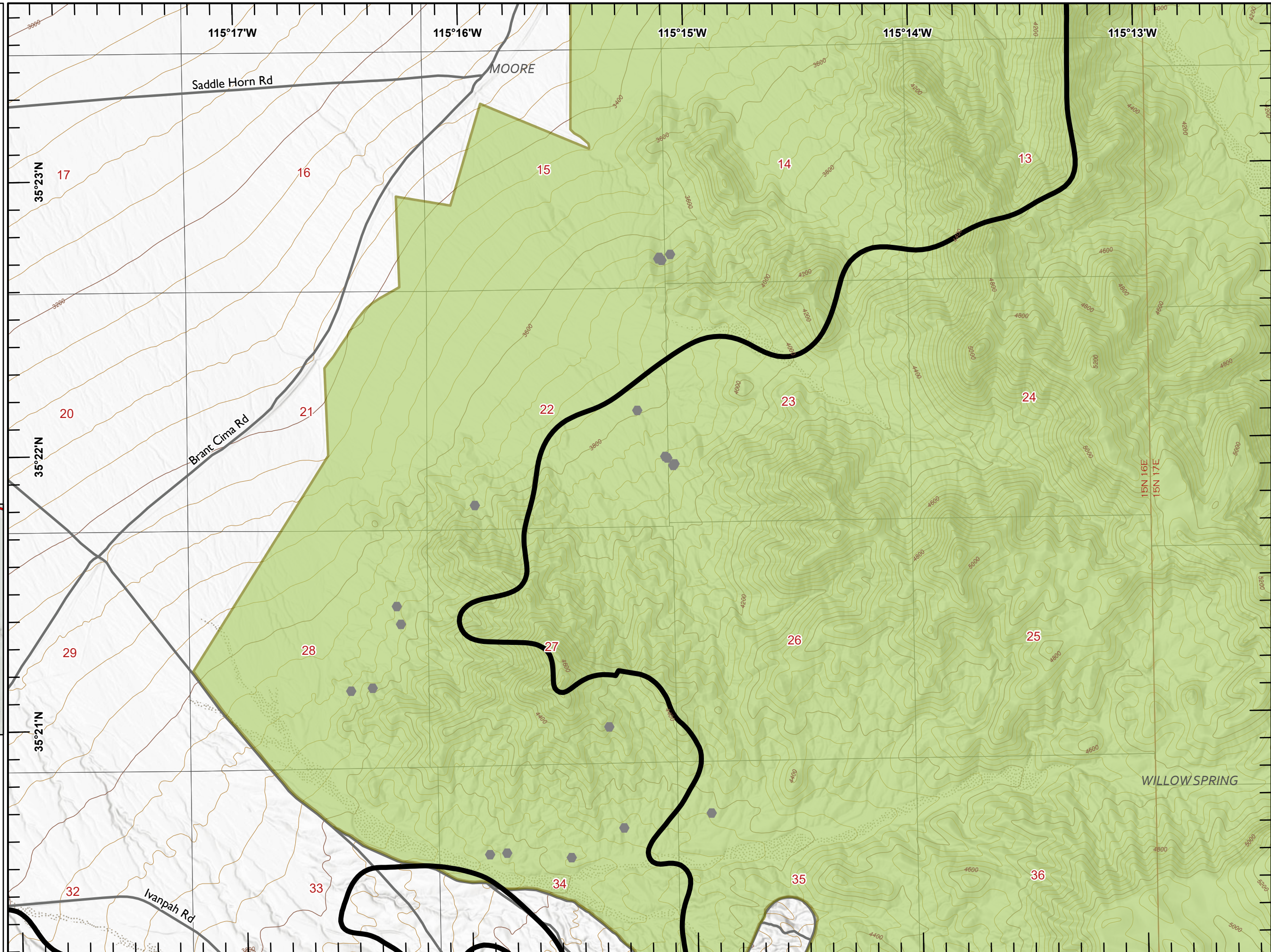



Miles

0 1/4 1/2




1:24,000





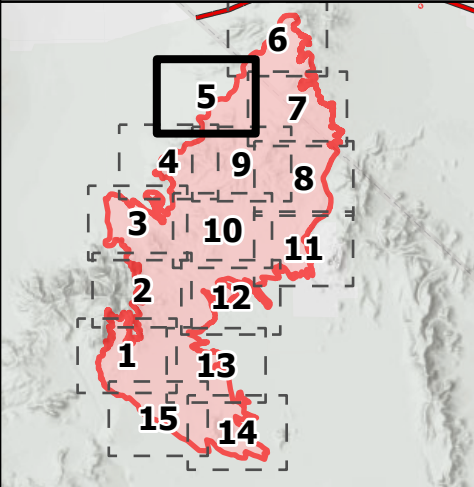
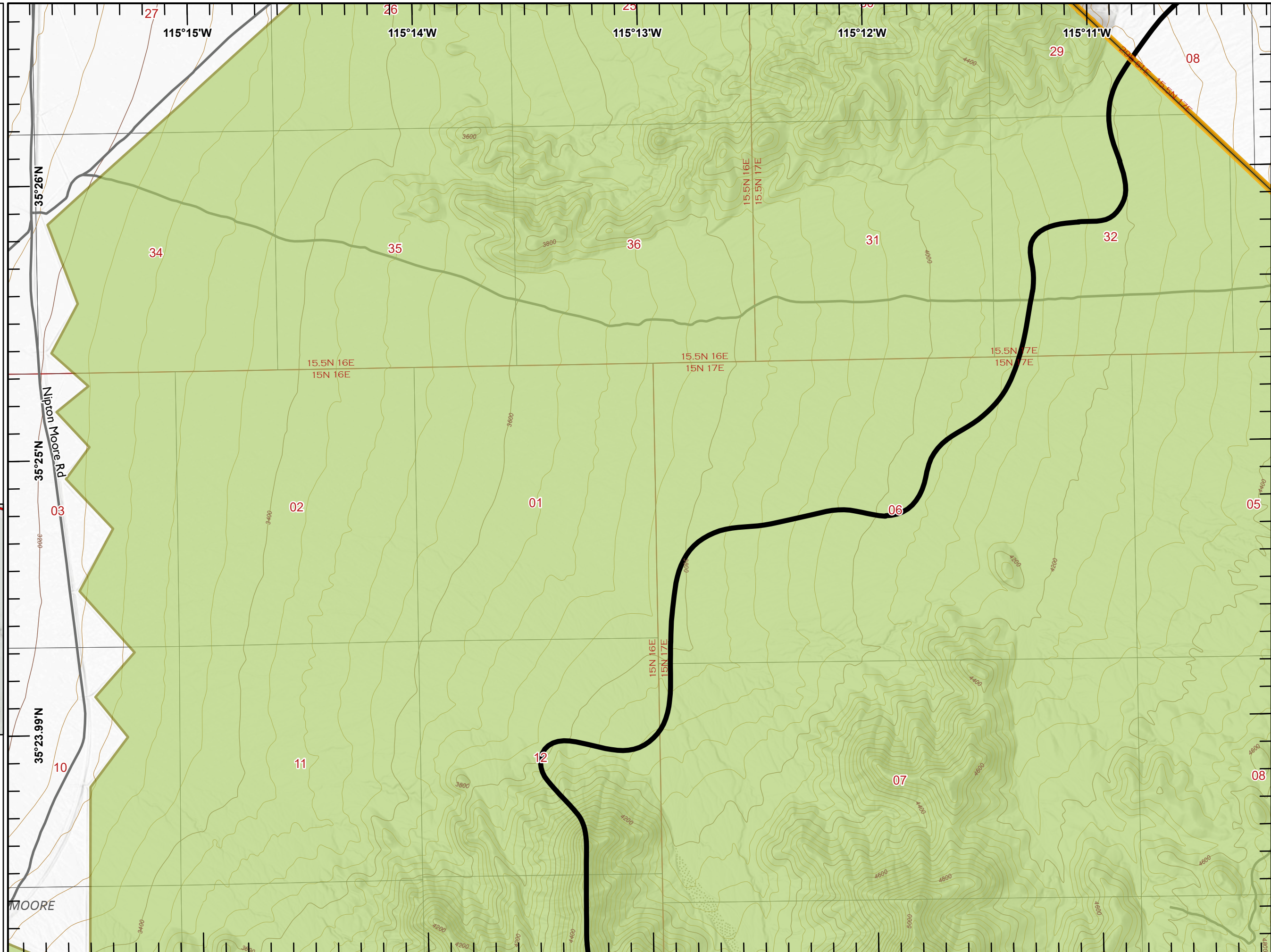
Last Updated
8/3/2023
21:32



IAP YORK

CA-MNP-010701
August 4, 2023

-  Contained
-  State Boundry
-  Designated Wilderness




Miles

0 1/4 1/2

1:24,000

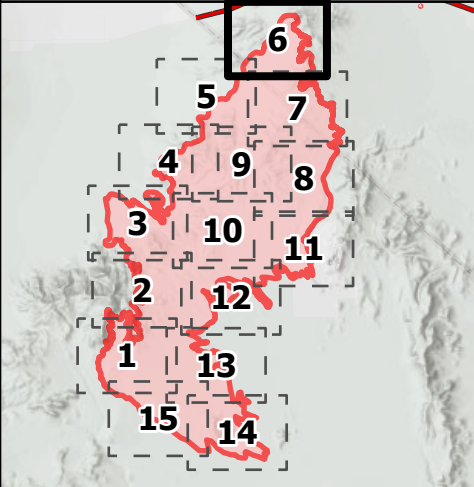
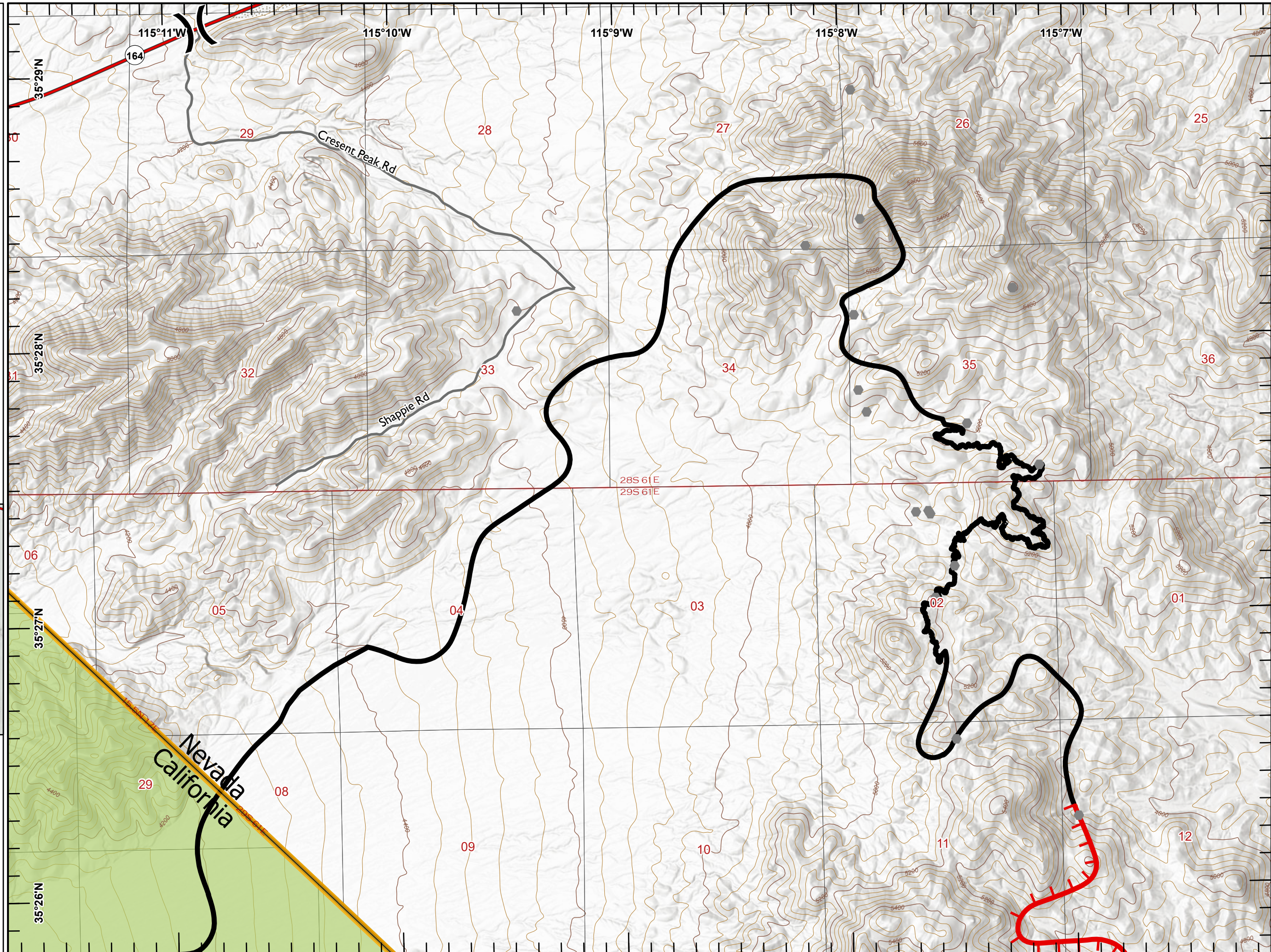
Last Updated
8/3/2023
21:32



IAP YORK

CA-MNP-010701
August 4, 2023






- Division Break
- Open Mine
- Contained
- Uncontained
- State Boundary
- Designated Wilderness

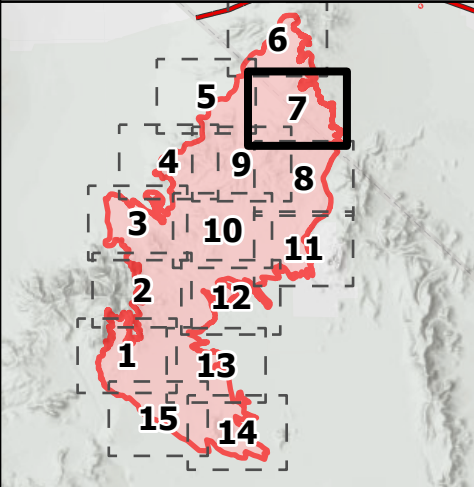
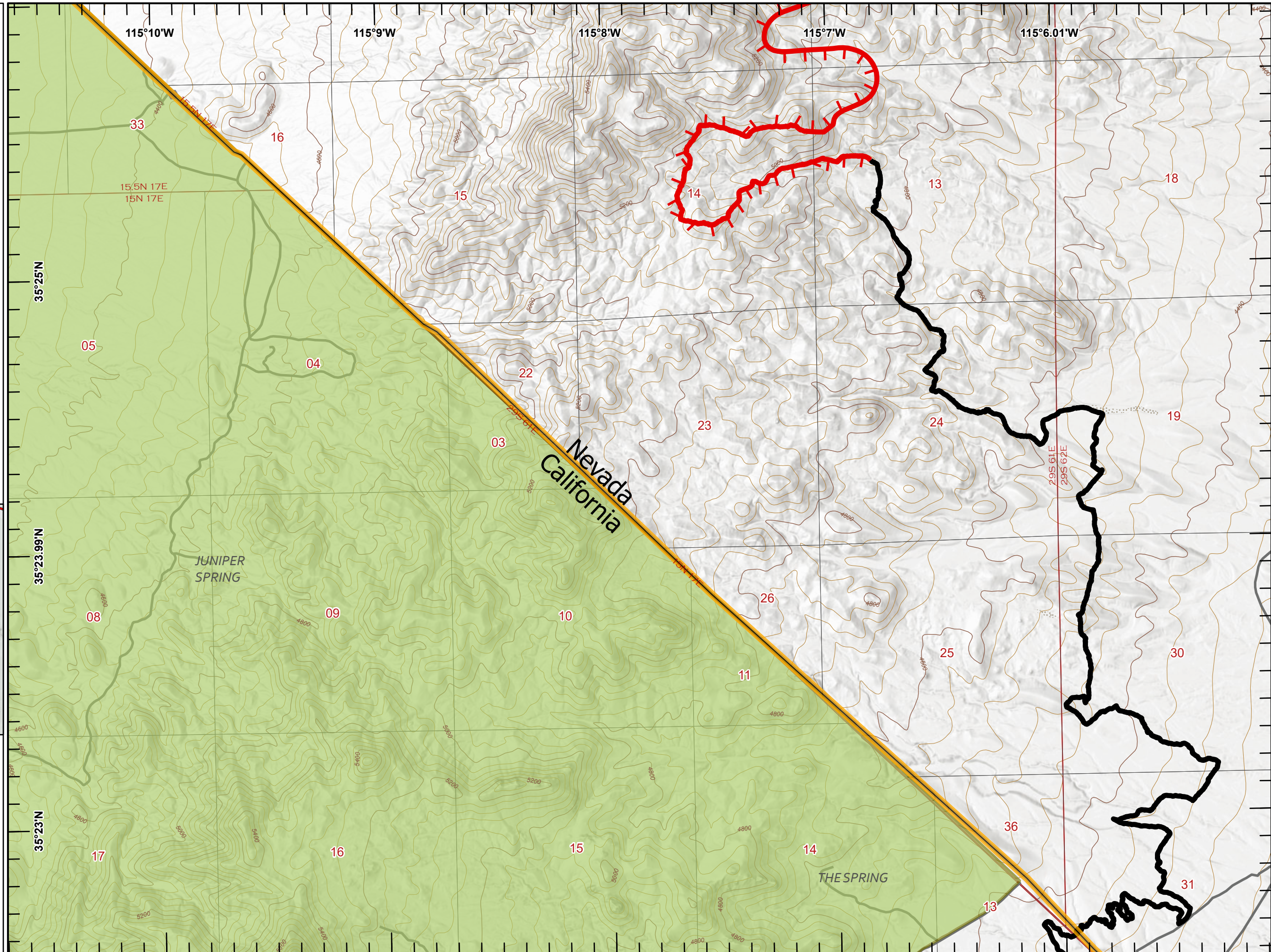


Miles
0 1/4 1/2
1:24,000
Last Updated
8/3/2023
21:33

IAP YORK

CA-MNP-010701
August 4, 2023

-  Open Mine
-  Contained
-  Uncontained
-  State Boundary
-  Designated Wilderness







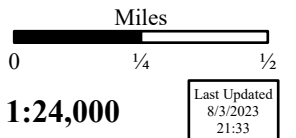
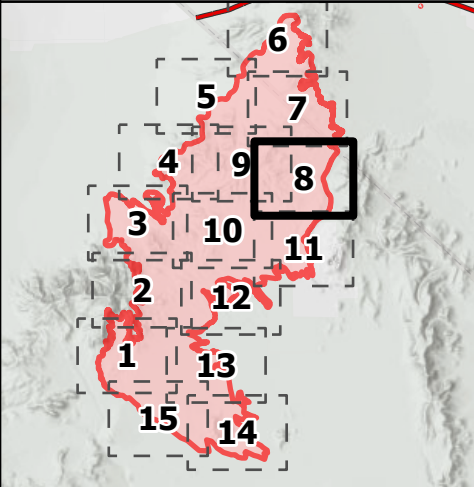
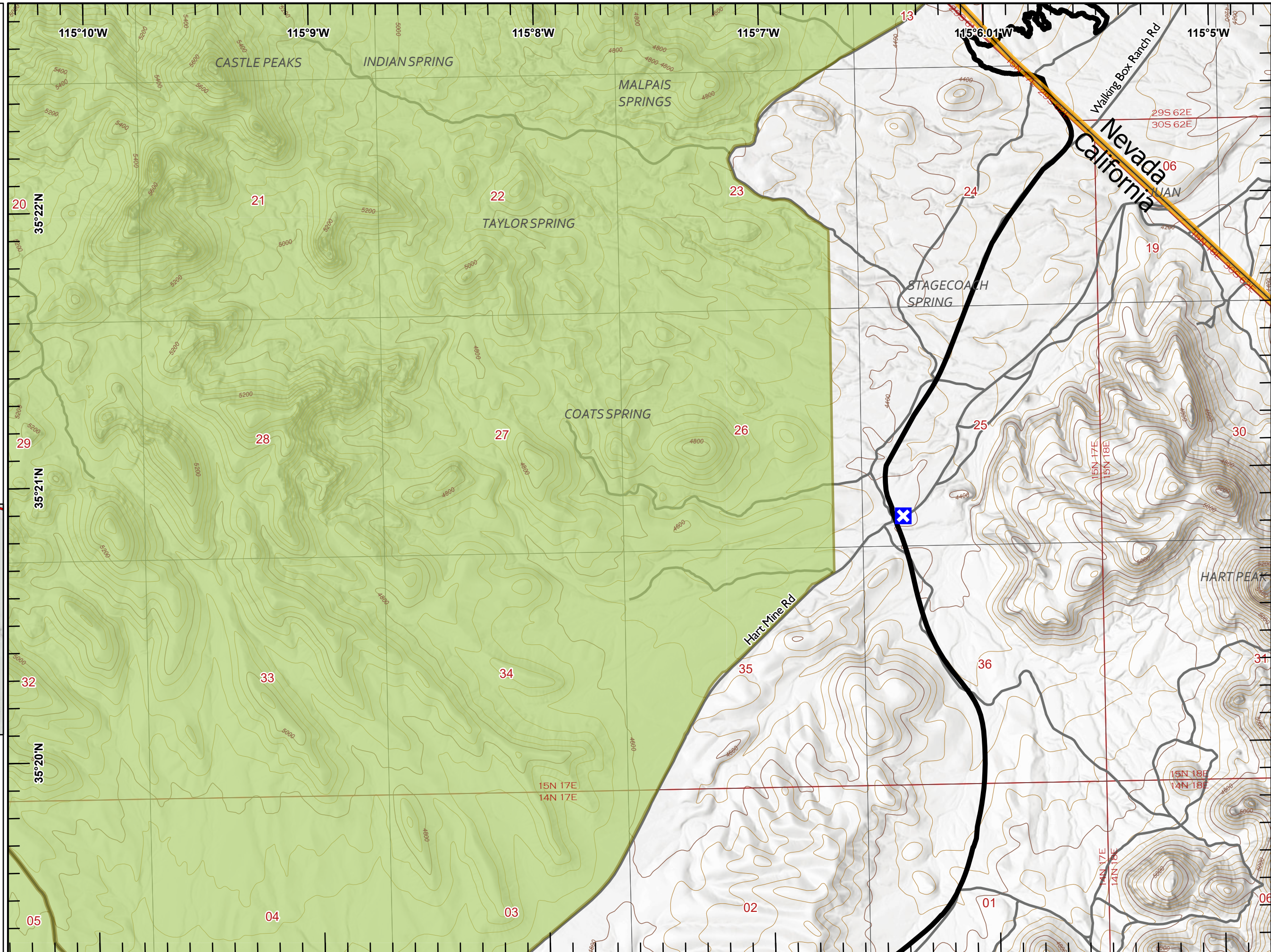
Miles
0 1/4 1/2
1:24,000
Last Updated
8/3/2023
21:33



IAP YORK




CA-MNP-010701
August 4, 2023

-  Closure
-  Contained
-  State Boundry
-  Designated Wilderness



IAP YORK

CA-MNP-010701
August 4, 2023

-  Contained
-  State Boundry
-  Designated Wilderness

