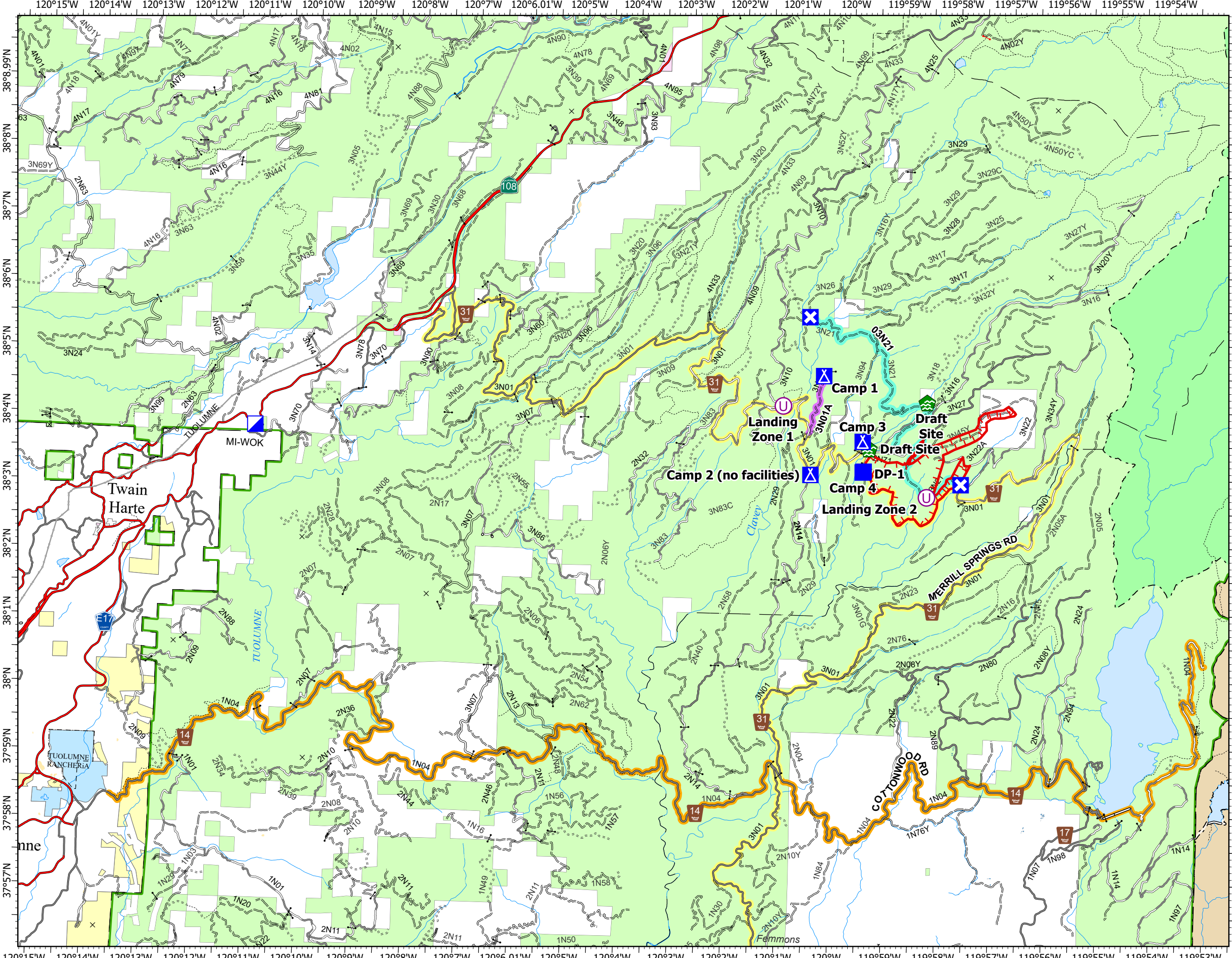


Transportation

Quarry
CA-STF-1921
09/23/2023

932 acres at 20230922 @ 1650

- Unimproved Landing Area
- Incident Command Post
- Drop Point
- Closure
- Camp
- Water Development or Draft Site
- Uncontained
- 03N21
- 3N01A
- COTTONWOOD RD
- MERRILL SPRINGS RD



9/23/2023 1010
Acres from GPS
North American 1983 Datum. LatLong Grid