

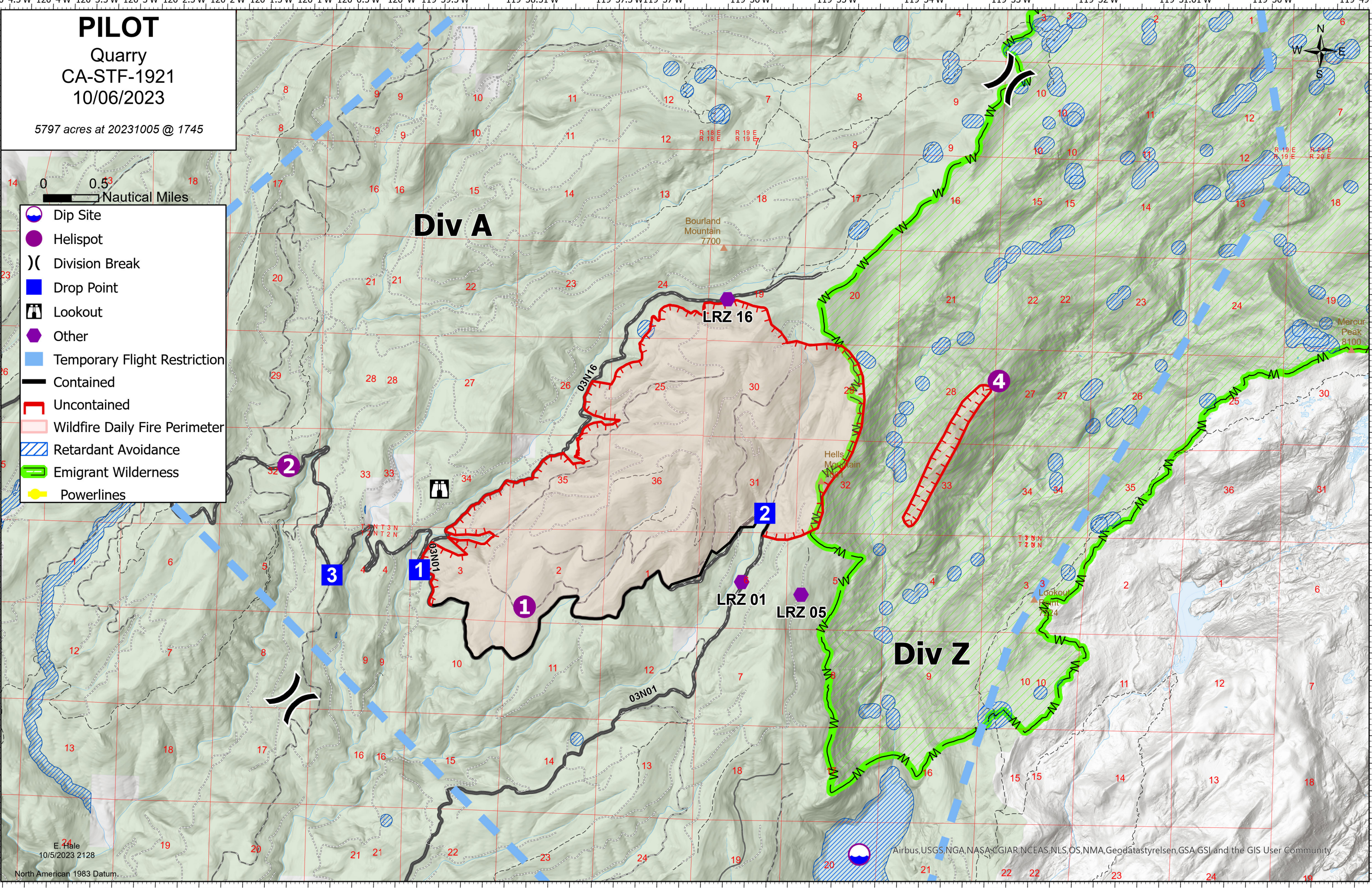
# PILOT

Quarry  
CA-STF-1921  
10/06/2023

5797 acres at 20231005 @ 1745



- Dip Site
- Helispot
- Division Break
- Drop Point
- Lookout
- Other
- Temporary Flight Restriction
- Contained
- Uncontained
- Wildfire Daily Fire Perimeter
- Retardant Avoidance
- Emigrant Wilderness
- Powerlines



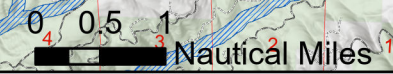
# PILOT

## Quarry

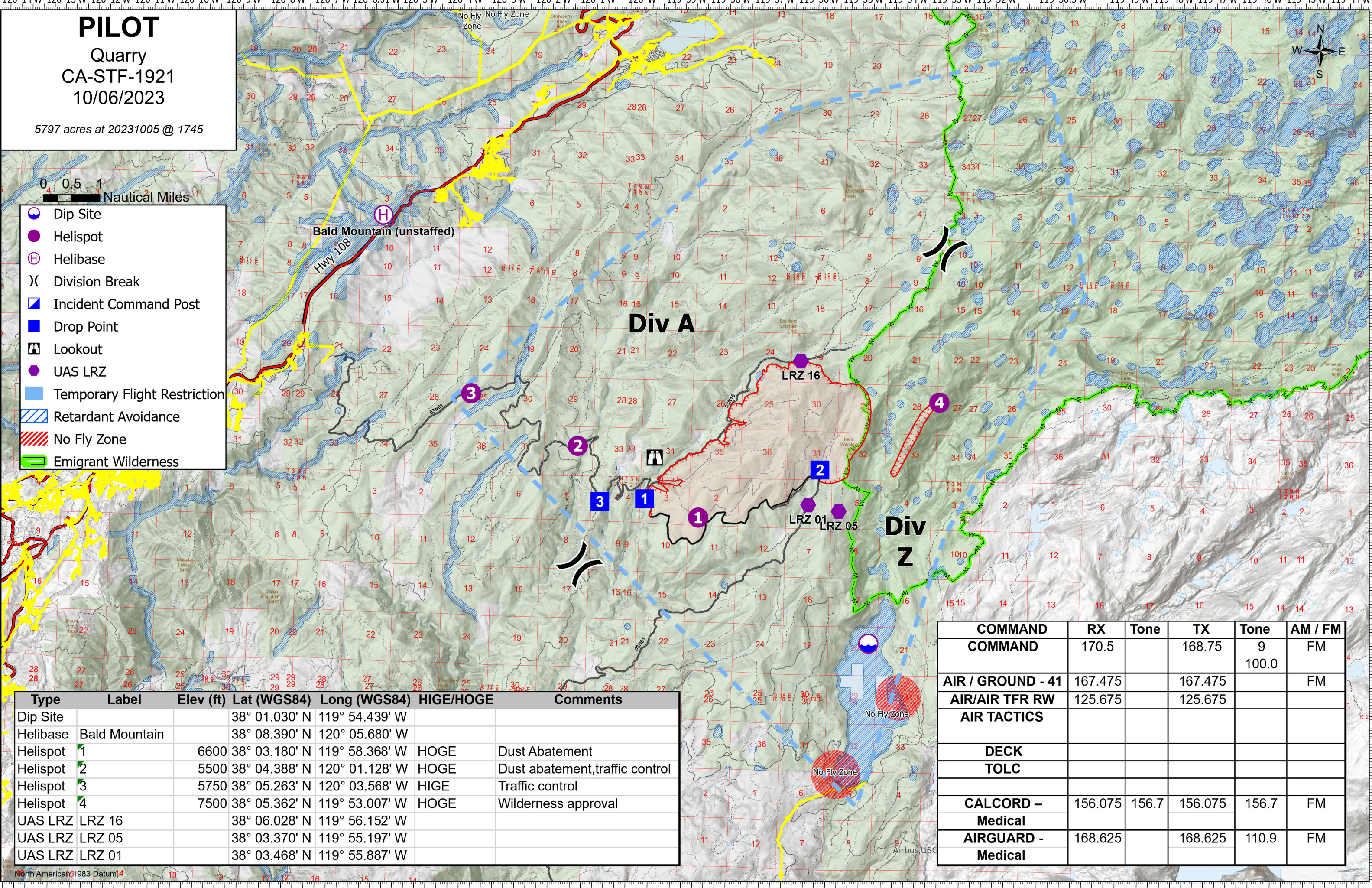
### CA-STF-1921

#### 10/06/2023

5797 acres at 20231005 @ 1745



- Dip Site
- Helispot
- Helibase
- Division Break
- Incident Command Post
- Drop Point
- Lookout
- UAS LRZ
- Temporary Flight Restriction
- Retardant Avoidance
- No Fly Zone
- Emigrant Wilderness



Type	Label	Elev (ft)	Lat (WGS84)	Long (WGS84)	HIGE/HOGE	Comments
Dip Site			38° 01.030' N	119° 54.439' W		
Helibase	Bald Mountain		38° 08.390' N	120° 05.680' W		
Helispot	1	6600	38° 03.180' N	119° 58.368' W	HOGE	Dust Abatement
Helispot	2	5500	38° 04.388' N	120° 01.128' W	HOGE	Dust abatement, traffic control
Helispot	3	5750	38° 05.263' N	120° 03.568' W	HIGE	Traffic control
Helispot	4	7500	38° 05.362' N	119° 53.007' W	HOGE	Wilderness approval
UAS LRZ	LRZ 16		38° 06.028' N	119° 56.152' W		
UAS LRZ	LRZ 05		38° 03.370' N	119° 55.197' W		
UAS LRZ	LRZ 01		38° 03.468' N	119° 55.887' W		

COMMAND	RX	Tone	TX	Tone	AM / FM
COMMAND	170.5		168.75	9 100.0	FM
AIR / GROUND - 41	167.475		167.475		FM
AIR/AIR TFR RW	125.675		125.675		
AIR TACTICS					
DECK					
TOLC					
CALCORD -	156.075	156.7	156.075	156.7	FM
Medical					
AIRGUARD -	168.625		168.625	110.9	FM
Medical					