

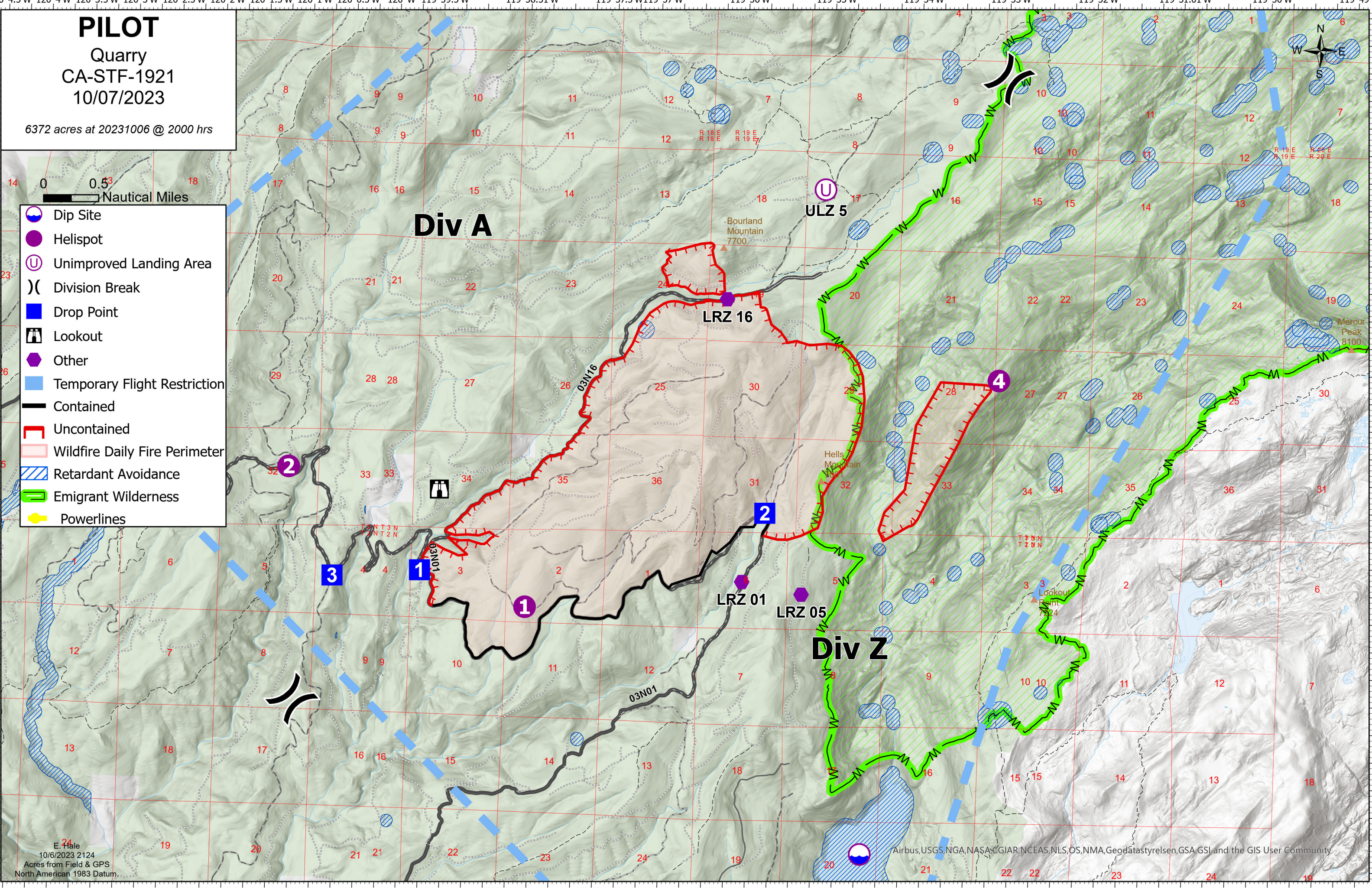
# PILOT

Quarry  
CA-STF-1921  
10/07/2023

6372 acres at 20231006 @ 2000 hrs



- Dip Site
- Helispot
- Unimproved Landing Area
- Division Break
- Drop Point
- Lookout
- Other
- Temporary Flight Restriction
- Contained
- Uncontained
- Wildfire Daily Fire Perimeter
- Retardant Avoidance
- Emigrant Wilderness
- Powerlines



E. Hale  
10/6/2023 2124  
Acres from Field & GPS  
North American 1983 Datum

Airbus, USGS, NGA, NASA, CGIAR, NCEAS, NLS, OS, NMA, Geodätstyrelsen, GSA, GSI and the GIS User Community

# PILOT

## Quarry

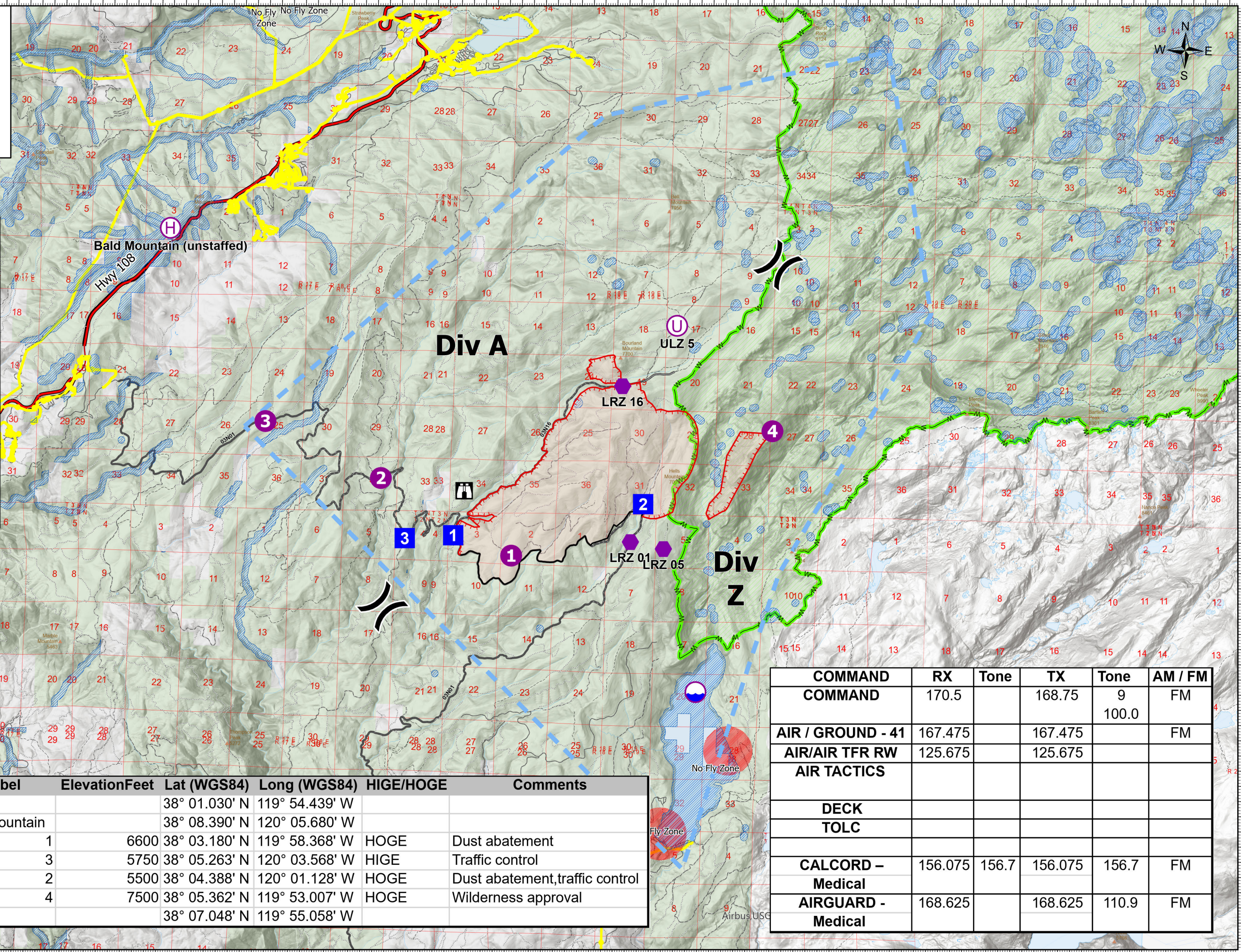
### CA-STF-1921

#### 10/07/2023

6372 acres at 20231006 @ 2000 hrs



- Dip Site
- Helispot
- Helibase
- Unimproved Landing Area
- Division Break
- Incident Command Post
- Drop Point
- Lookout
- UAS LRZ
- Temporary Flight Restriction
- Retardant Avoidance
- No Fly Zone
- Emigrant Wilderness



Type	Label	ElevationFeet	Lat (WGS84)	Long (WGS84)	HIGE/HOGE	Comments
Dip Site			38° 01.030' N	119° 54.439' W		
Helibase	Bald Mountain		38° 08.390' N	120° 05.680' W		
Helispot	1	6600	38° 03.180' N	119° 58.368' W	HOGE	Dust abatement
Helispot	3	5750	38° 05.263' N	120° 03.568' W	HIGE	Traffic control
Helispot	2	5500	38° 04.388' N	120° 01.128' W	HOGE	Dust abatement, traffic control
Helispot	4	7500	38° 05.362' N	119° 53.007' W	HOGE	Wilderness approval
Unimproved Landing Area	ULZ 5		38° 07.048' N	119° 55.058' W		

COMMAND	RX	Tone	TX	Tone	AM / FM
COMMAND	170.5		168.75	9 100.0	FM
AIR / GROUND - 41	167.475		167.475		FM
AIR/AIR TFR RW	125.675		125.675		
AIR TACTICS					
DECK					
TOLC					
CALCORD - Medical	156.075	156.7	156.075	156.7	FM
AIRGUARD - Medical	168.625		168.625	110.9	FM

Acres from Field & GPS  
North America 1983 Datum