

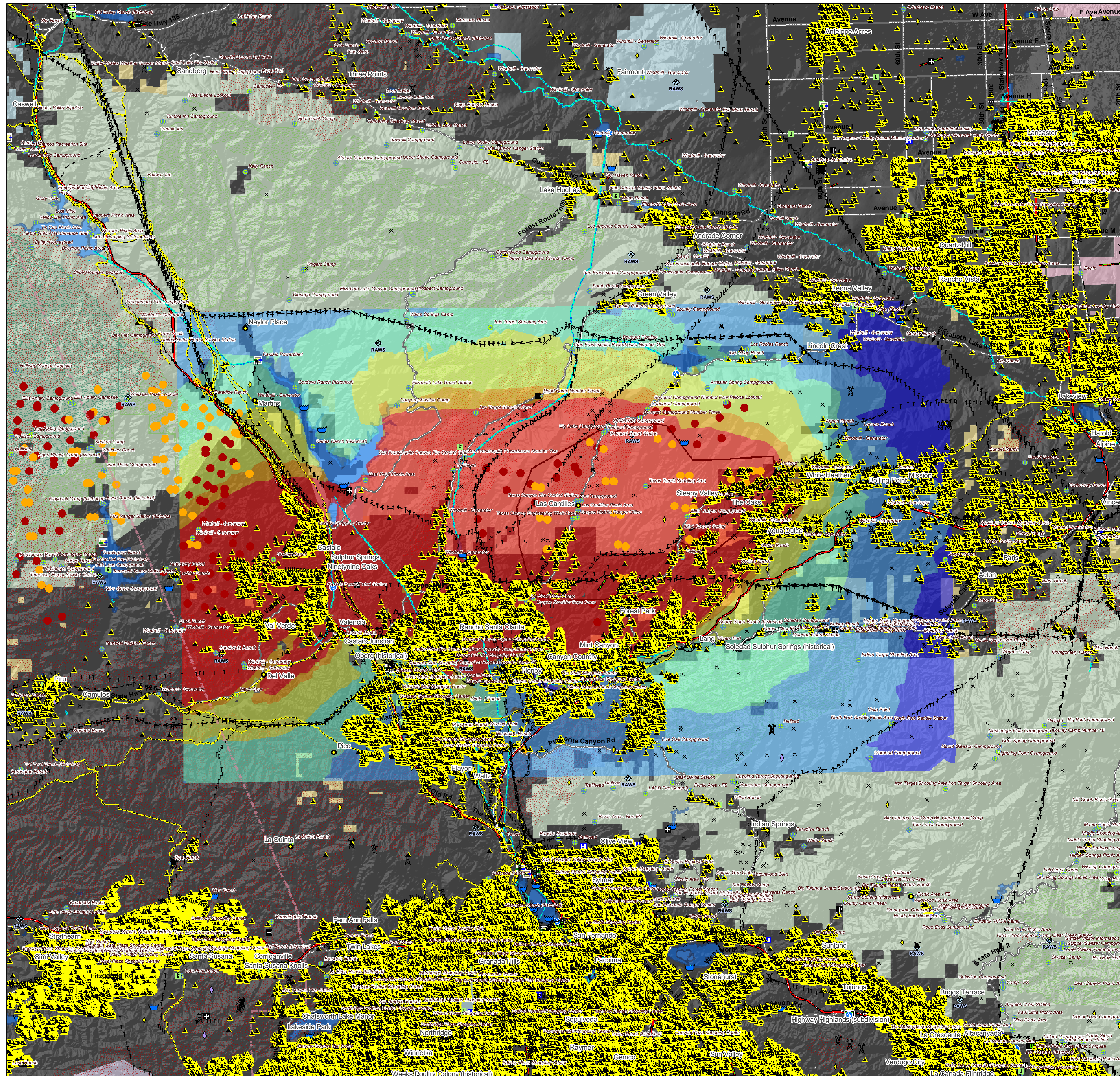


Buckweed Fire, CA

T1_A_071022-1_jk 22 Oct 2007

Major Values-at-Risk per FSPRO Fire Spread Probabilities: 7 days as of 22 October 2007

- Fire Perimeter: 21 Oct PM
- MODIS Points: 22 Oct AM**
- 22 October 2007
- 21 October 2007
- Prior 6 days
- Past Fires 2000-2006
- FSPRO Fire Spread Probabilities**
- > 80 %
- 60 - 80 %
- 40 - 60 %
- 20 - 40 %
- 5 - 20 %
- 1 - 5 %
- < 1 %
- Z** RAWs Stations
- Building Clusters
- Water: Dams > 100af
- Water Supply: Intakes
- Water Treatment Plants
- Water Pipeline - Aqueduct - Canal
- Powerlines
- Industrial Plant
- Power Pylon
- Power or Pumping Substation
- Communication Towers
- Oil & Gas Transmission Lines
- Airports
- Airport Runways
- Hospitals
- Schools
- HAZMAT: Mines
- HAZMAT: Superfund Sites
- HAZMAT: Hazardous Waste
- Other Landmarks
- Interstates
- Major Roads
- Railways
- County Boundary
- Jurisdiction**
- Private
- State
- BLM
- DOD
- NPS
- USFS
- Inventoried Roadless
- Designated Wilderness



*Building Clusters represent the center of parcels where county assessor records indicate taxable improvements are present. One or more structures and other improvements may exist proximate to these point locations.

CAUTION: Defer to air photos or local knowledge for exact structure and other feature locations.

